



Serving Students Who Are Experiencing Homelessness, Food Insecurity, and Financial Crisis

Presented by
Cal Poly

February 8, 2018





How prepared is your campus to meet basic needs of students?

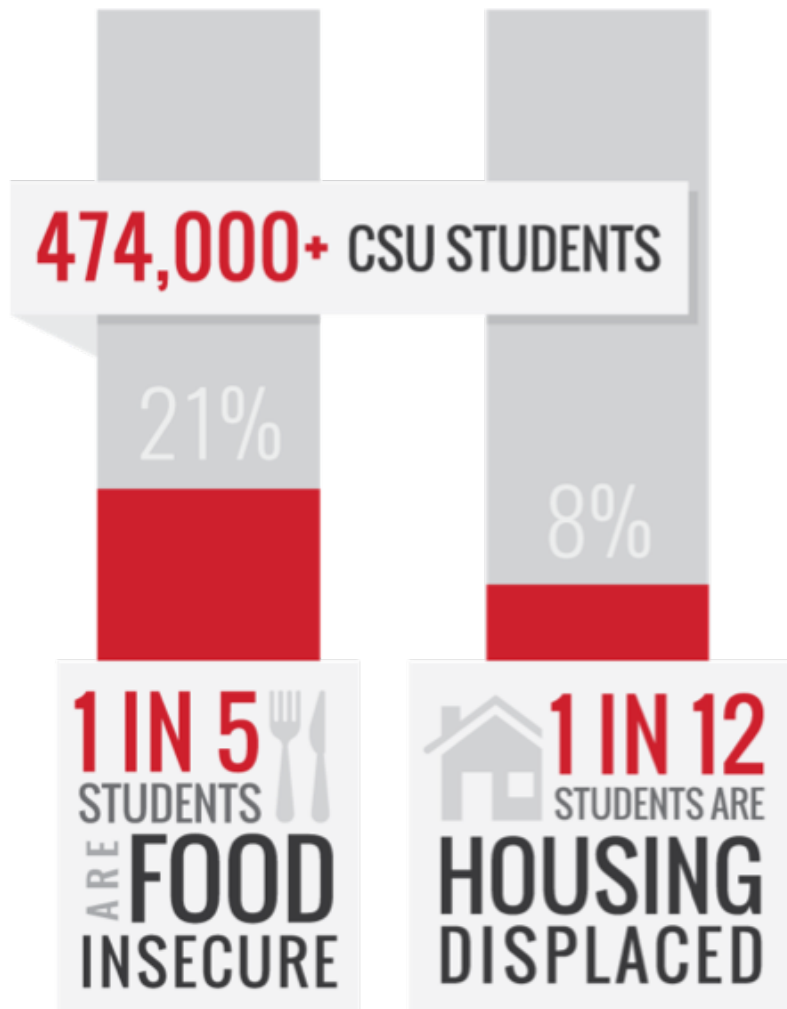


Overview of Programs & Services at Cal Poly

- **Basic Needs Working Group**
- **CalFresh Outreach**
- **Emergency Grants**
 - <http://www.studentaffairs.calpoly.edu/priorities/care-program>
- **Emergency Housing**
- **Hunger Program**
 - Meal vouchers
 - Food pantry
 - Meal Sharing








BACKGROUND & NATIONAL RESEARCH



DISPLACED & FOOD INSECURE STUDENTS IN THE CSU

5 BARRIERS TO HELPING MORE STUDENTS

-  POTENTIAL STIGMA OF NEEDING HELP
-  LACK OF AWARENESS OF SERVICES
-  LACK OF ACCESS TO FINANCIAL AID
-  NOT ENOUGH AFFORDABLE HOUSING
-  TOO LITTLE FUNDING FOR RESOURCES



Basic needs

Proper housing & food are necessary for success

These problems are often hidden, masked, shameful

What have we seen at Cal Poly?

How do we take action?

Basic Needs Working Group: Members

- President's Chief of Staff
- ASI President
- Vice-President Student Affairs
- Dean of Students
- CalFresh Outreach
- Campus Health & Well Being
- Athletics
- Campus Dining
- Cross Cultural Centers
- Housing



Emergency Grants: Cal Poly Cares

- Tuition
- Academic Supplies
- Housing & Meals
- Medical
- Professional Clothing
- Emergency

my CalPoly login Maps

CAL POLY | Student Affairs
Embrace your Unlimited Possibilities

Who We Are | Strategic Planning | Priorities | Build Relationships | Get Involved | Be Well | Continue Your Success | Contact Us

Home : Cal Poly Cares

Cal Poly Cares



Cal Poly is committed to creating an environment for all students to reach their full potential and thrive.

Along this journey, many students are unable to afford expenses core to their ongoing success, including housing and meals, academic supplies and materials, personal care items, professional clothing and unplanned emergencies.

[Apply for a Grant](#)

Our Cal Poly Foundation Board members have come together to support these students in their highest areas of need and created the *Cal Poly Foundation Fund for Students*. This fund provides awards to students through the Cal Poly Cares Grant program and is administered by the Student

PRIORITIES

- Aware Awake Alive
- Cal Poly Cares
- Giving
- Sexual Assault and Prevention
- Student Success Fee
- Vantage Point Program




Cal Poly Cares Process

- Step one: Student applies online
- Step two: Assistant Dean of Students forwards application to Financial Aid and schedules an appointment
- Step three: Financial Aid sends financial background on the student – Pell eligible, AB540 status, loans, SAP, etc.
- Step four: Assistant Dean of Students meets with the student applicant
- Step five: Assistant Dean of Students notifies Financial Aid of recommendation to approve grant. Financial Aid responds if there are any concerns.
- Step six: Financial aid disburses the funds. Assistant Dean of Students notifies the student.

Cal Poly Cares Criteria

- Maximize all available financial aid, including student and parent loans, before being awarded
- Obtain an on-campus job to help fund educational expenses if possible
- Maintain satisfactory progress towards degree
- Demonstrate connection with local social services (where applicable)
- Document need for emergency, health related situations
- Apply for the California DREAM Act (AB540), if undocumented student
- Live in university housing if homeless (with exceptions)
- Provide documentation verifying their emergency situation



Emergency Housing

On campus emergency housing is available for students at risk of becoming homeless.





Meal Vouchers

Free all you care to eat
meal at

19 Metro

or

When 19 Metro is closed:

Food purchase up to \$7 at one of the following locations

- Campus Market
- Einstein Bros. Bagels
- The Avenue
- Sandwich Factory
- Tacos To-Go Express

13951

*One coupon per customer. Not valid with other offers.
No cash value. Expires 06/16/17.*

DEAN OF STUDENTS OFFICE
2016-17

www.calpolydining.com Cashier: Use "Meal Voucher" Button



Food Pantry

Established in 2014

Hunger Program

Housed in Cal Poly's Campus Health & Wellbeing's Health Education Office



Food Pantry

The Food Pantry ensures that all students have access to nutritious meals every day in order to stay focused on their success at Cal Poly.





Food Pantry Growth

163%

increase in total encounters from Academic Year (AY) 2015-2016 to AY 2016-2017.

25%

increase in unique students from Fall 2016 to Fall 2017

Food Pantry Data: Fall Quarter 2017



598

Number of total encounters of the food pantry for Fall 2017.



5x

Average number of visits to the food pantry per one student for Fall 2017.



56.19%

Percentage of students who accessed the food pantry that are female.

Food Pantry Demographics



● Freshman ● Sophomore ● Junior ● Senior ● Graduate

Food Pantry Demographics - Fall Quarter 2017



Partnerships



FOOD BANK
COALITION OF SAN LUIS OBISPO COUNTY

Food Pantry



Food Pantry: Items are from the SLO County Food Bank. SLO County's Food Bank offers a variety of shelf stable food items.



The CalFresh Outreach project

Funded to CSU Chico by CA Dept. of Social Services

11 CSU subcontracting campuses

Goal: Enroll eligible CSU students

What is SNAP?

- Federal Supplemental Nutrition Assistance Program (\$80b, 2017)
 - SNAP Benefits 45m Americans (>50% below poverty, 72% w/kids)
 - CalFresh: \$8b to 4.5m Californians
- Economic impact: \$1 SNAP = \$1.73 real GDP generation
- CA has low enrollment (67%)

CalFresh Outreach activities

- Current funding cycle: 2016-2018
- Goal: Get students signed up for free food money! (\$150/m)
 - Normalize, destigmatize, increase awareness & visibility
- Efforts: Outreach, drop-in hours, private appts, social media, in-person presentations, word-of-mouth, outreach, outreach



CalFresh Outreach partners

- Cal Poly Basic Needs Working Group, ASI, Athletics, Corporation, Dining, Health/Wellness, Financial Aid, Housing, President's Office, Student Affairs
- Community: SLO County Dept. of Social Services, Farmers' Market, Food Bank, Regional CalFresh Alliance



Impact on students in need

- Increase academic success and graduation
 - Social capital, professional trajectories, poverty reduction (...and lofty CSUGI 2025 goals)
 - Hungry students can't learn, regardless of 'academic support' mechanisms
 - Physical, mental, social health improvements come with improved access to food



Economic impact

- Economic benefits estimates
 - Cal Poly food insecure 27% = 6000 students
 - Avg. allotment \$150/m = \$900,000 federal money drawn to local economy
 - \$1.73 multiplier = \$1.6m in economic benefit to SLO region

Impact on student staff

- Phenomenal professional experience in socially-relevant issue
 - \$80k (over 2y) to 15 student outreach staff, grad students, interns
 - Interdisciplinary team: Nutrition, social sciences, business, marketing, graphic arts
 - Some drawn from previous outreach efforts, some shocked that issue exists
 - Building professionalism, networking, empathy, diversity in teamwork, skills, expertise

CalFresh considerations

- The good
 - Sustainable, 'free', stimulates CA/local economy (the money is there!), promotes cultural shift, usually easy to get people on board (at least morally), LIFE-CHANGING to those in need, improves academic success (???)
- The bad
 - Complex to outreach to large population, need a concerted (funded) effort, requires cheerleader, uphill battle to increase awareness / visibility / acceptability, bureaucratic hurdles
- The ugly
 - Stigma of 'food stamps' / charity, shame of poverty, fear of judgement, haters

Best Practices

- Share resources
 - College and University Food Bank Alliance (<http://www.cufba.org>)
- Document need
 - Survey students
 - Focus groups
 - Gather institutional data
- Partner with local agencies
 - Faith-based organizations
 - Food Bank
 - Local non-profits
 - Department of Social Services
- Identify engaged faculty
 - Work with grants development
 - Outreach to various majors
- Create a working group

Other Resources

- CSU Basic Needs website
 - <https://www.calstate.edu/acadaff/foodsecurity.shtml>
- Hunger on Campus– The Challenge of Food Insecurity for College Students
 - <https://studentsagainsthunger.org/hunger-on-campus/>
- Landscape Analysis of Emergency Aid Programs, NASPA
- Students Shouldn't Have to Choose Between Books and Food, Chronicle of Higher Education, February 28, 2016
- University of California, Global Food Initiative, Student Food Access and Security Study
- Wisconsin Hope Lab study,
 - <http://wihopelab.com/publications/Hungry-and-Homeless-in-College-Report.pdf>