



STUDENT HEALTH  
& WELLBEING

**CalPoly**  
Pomona



# Student Wellbeing: A Holistic Approach to Care

January 7, 2020

**Judy Juarez Crawford (she, her, hers)**

Broncos Care Basic Needs Program, Care Services Coordinator

**Ramon Coronado, LCSW, MPA (he, him, his)**

Behavioral Intervention Team, Care Services Coordinator

Lead, Integrated Care Network

**Leticia Gutierrez- Lopez, Psy.D. (she, her, hers)**  
Associate Vice President, Student Health and Wellbeing

# Overview



Introductions



Integrated Care Network Overview



Basic Needs Services



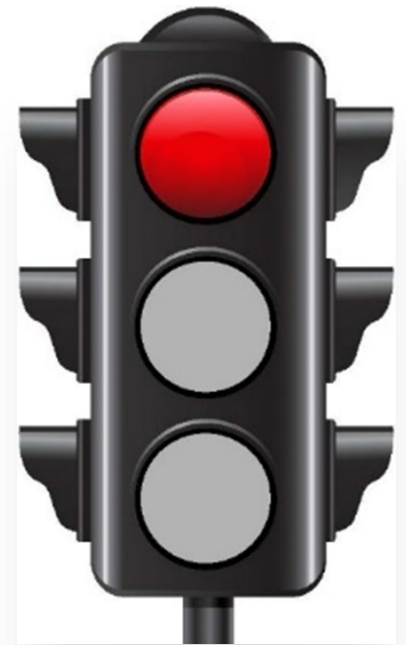
Case Study

# Integrated Care Network



**Goal:** Integrate and partner to improve access through coordinated care.

- Autism Specialty
- ADHD Specialty
- ASI Care Coordinator
- Broncos Care – Basic Needs
  
- Behavioral Intervention Team
- University Housing Case Management and Linkage
- Wellbeing Coaching



**Warm Handoff**

# Cal Poly Pomona Basic Needs Initiative:



**Broncos Care  
Basic Needs Program**

- ✓ Division of Student Affairs
- ✓ Care Services Coordinator
- ✓ Student CalFresh Outreach Ambassadors



**Basic Needs  
Task Force**

- ✓ Staff
- ✓ Faculty
- ✓ Student representatives
- ✓ ASI



**Associated  
Students, Inc.**

- ✓ Poly Pantry
- ✓ ASI Care Coordinator
- ✓ Officer of Basic Needs

# Food and Housing Resources:

## Food Resources



- Poly Pantry (located in the BSC)
- CalFresh Outreach & Assistance
- Meal Assistance Program
- EBT Access on Campus

## Housing Resources



- Emergency Housing through University Housing Services (7-14 days)
- Hotel Vouchers for students with families (7-14 days)
- Linkage to community resources



## Financial Assistance and Support

- \$500 Emergency Grant for crisis/emergencies
- Linkage with Financial Aid and other campus resources
- Education on financial resources and building budgets

## Holistic Support



- Follow academic achievement of students and focus on supporting them through a holistic wraparound approach
- Full time Care Services Coordinator to assist with support and linkage to campus and community resources;

# Case Study: A Holistic Approach



Receive application and/or referral



Review application: Assess level of need



Initial Meeting with student



Warm handoff to ICN & beyond



Provide resources



Track Student Success & Follow up accordingly



**THANK YOU!**





**Using Analytics to Increase CalFresh Enrollment**

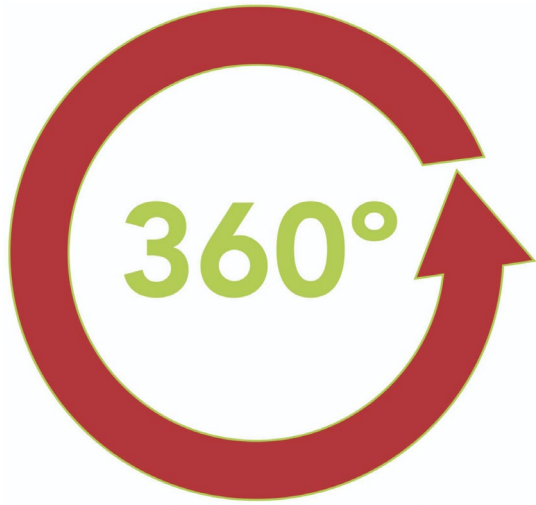
**CHEBNA Summit 2020**

**Darice Ingram**

**Rutweek Sawant**

**CAL STATE  
EAST BAY**

# Today's Review



**Background**

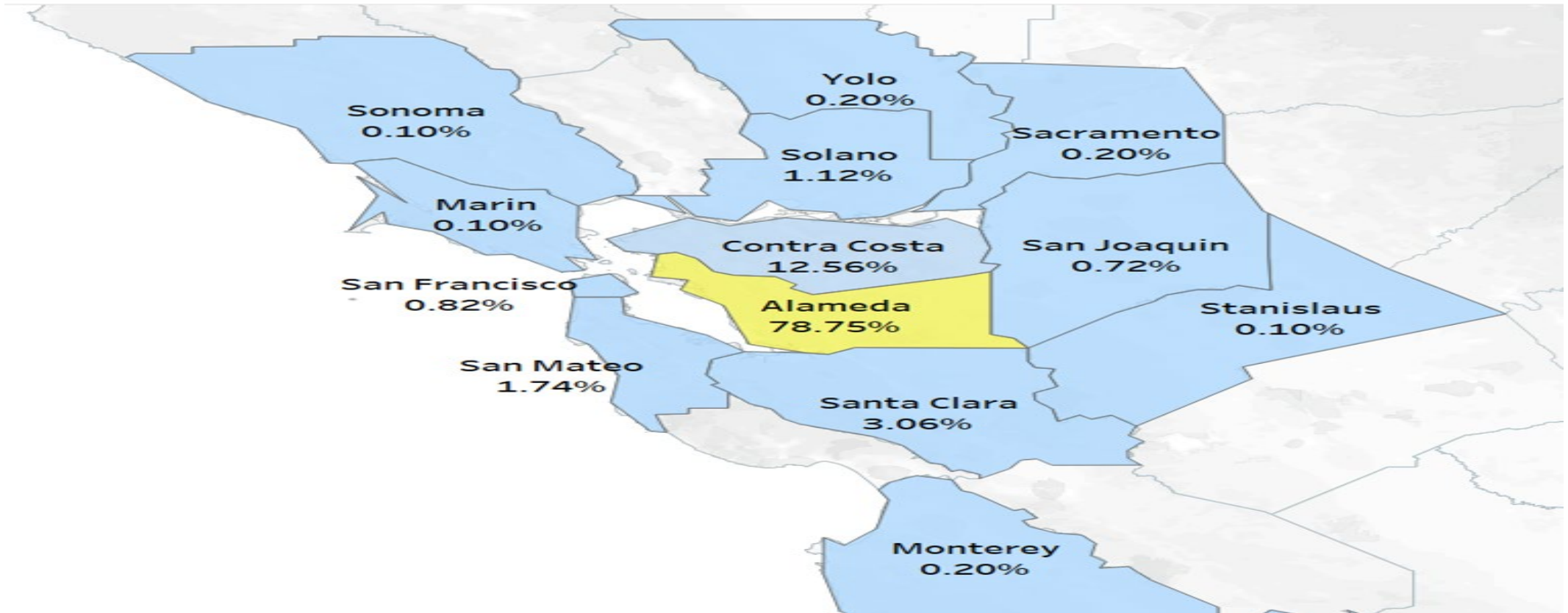


**Data Highlights**

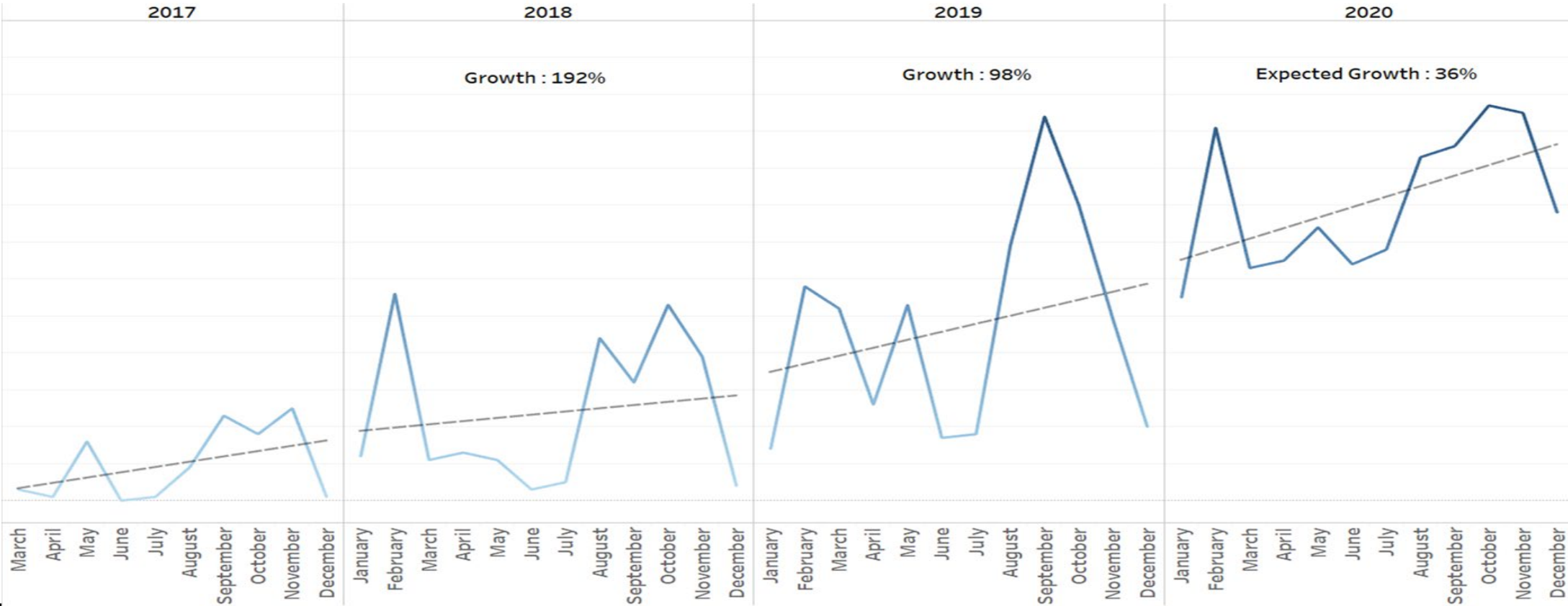


**Impact and  
H.O.P.E.**

# Multiple Service Areas

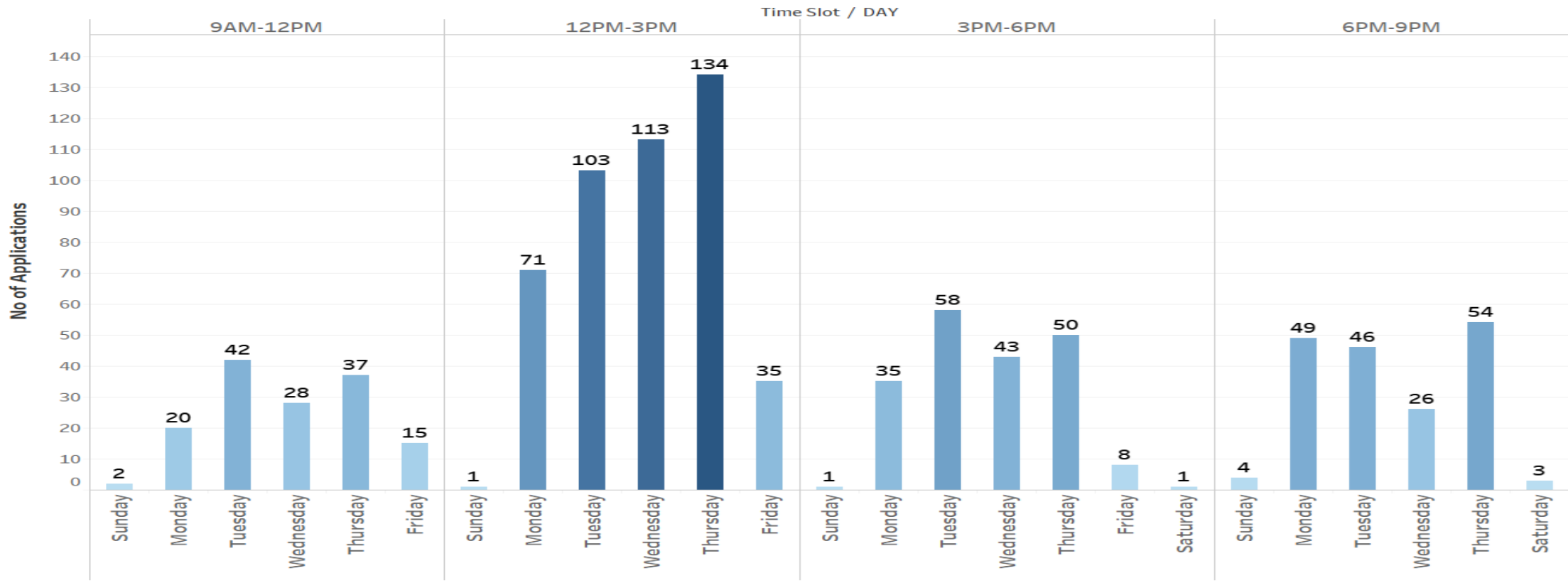


# Growth and Trends

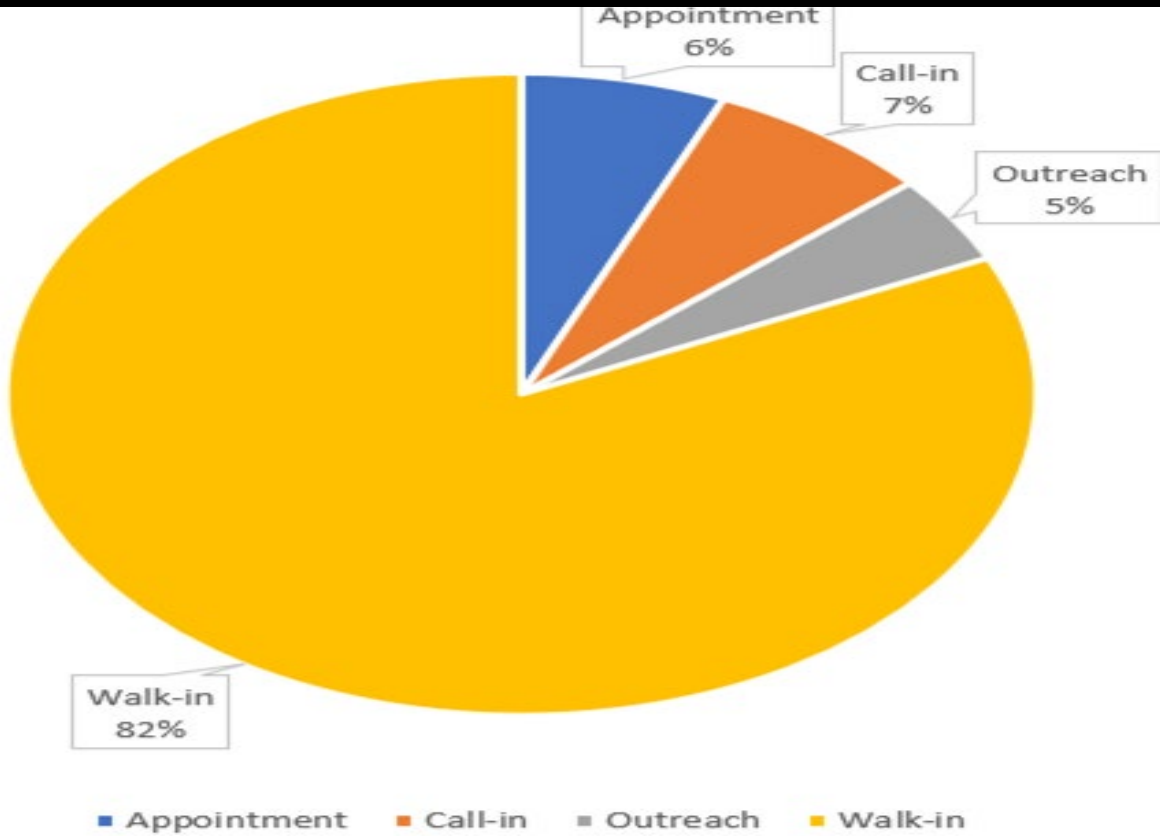
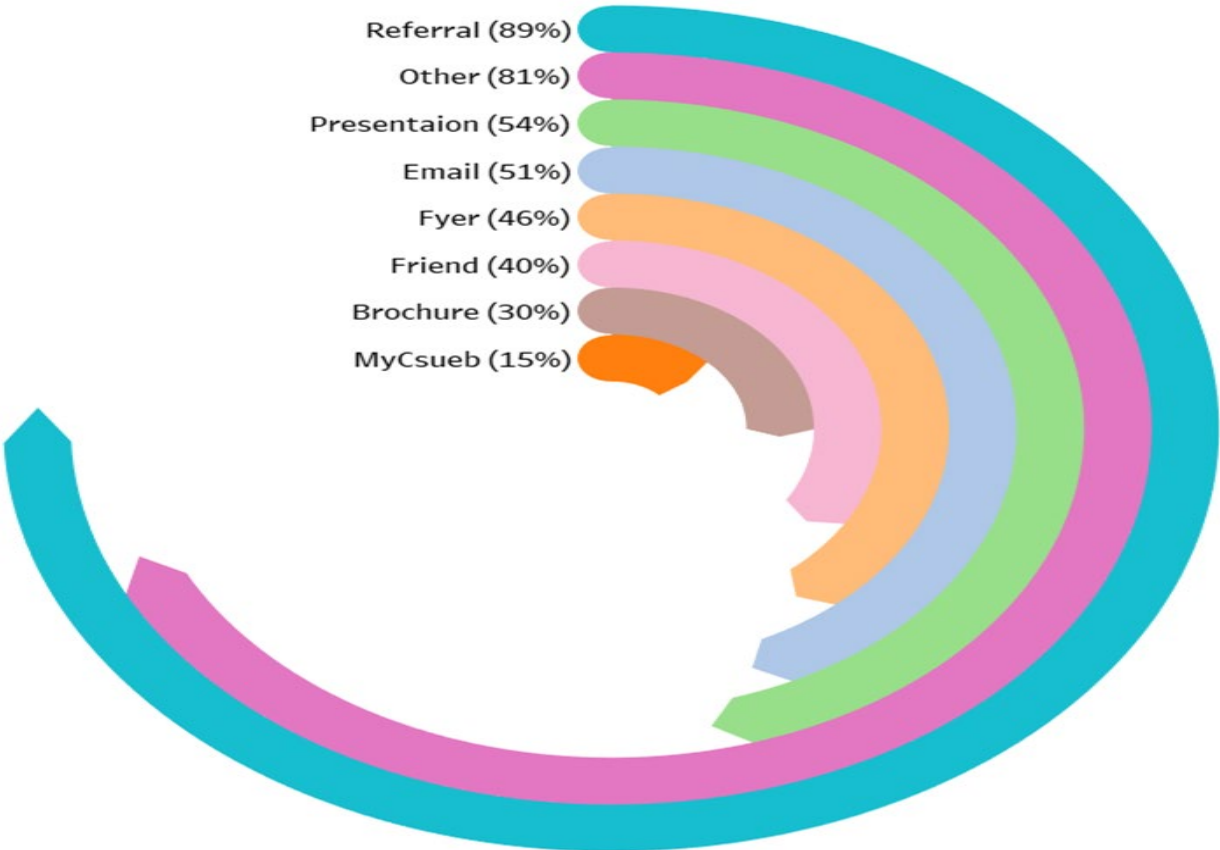


# When and Where

Time VS Day



# How and Why



# Our Response



<https://preview.tinyurl.com/csuebncalfresh>

# Thank You & Questions



**"Will CalFresh affect my financial aid?"**  
**NO. It will not.**



This presentation was funded by USDA, SNAP, known in California as CalFresh, an equal opportunity provider and employer, and the California Department of Social Services. Contact the East Bay CalFresh office



# Connect with Us

Darice Ingram

Basic Needs Program Coordinator

[Darice.Ingram@csueastbay.edu](mailto:Darice.Ingram@csueastbay.edu)

Rutweek Sawant

M.S. Business Analytics Intern

[Rutweekmahesh.sawant@csueastbay.edu](mailto:Rutweekmahesh.sawant@csueastbay.edu)

[calfresh@csueastbay.edu](mailto:calfresh@csueastbay.edu)

@pioneersforhope