

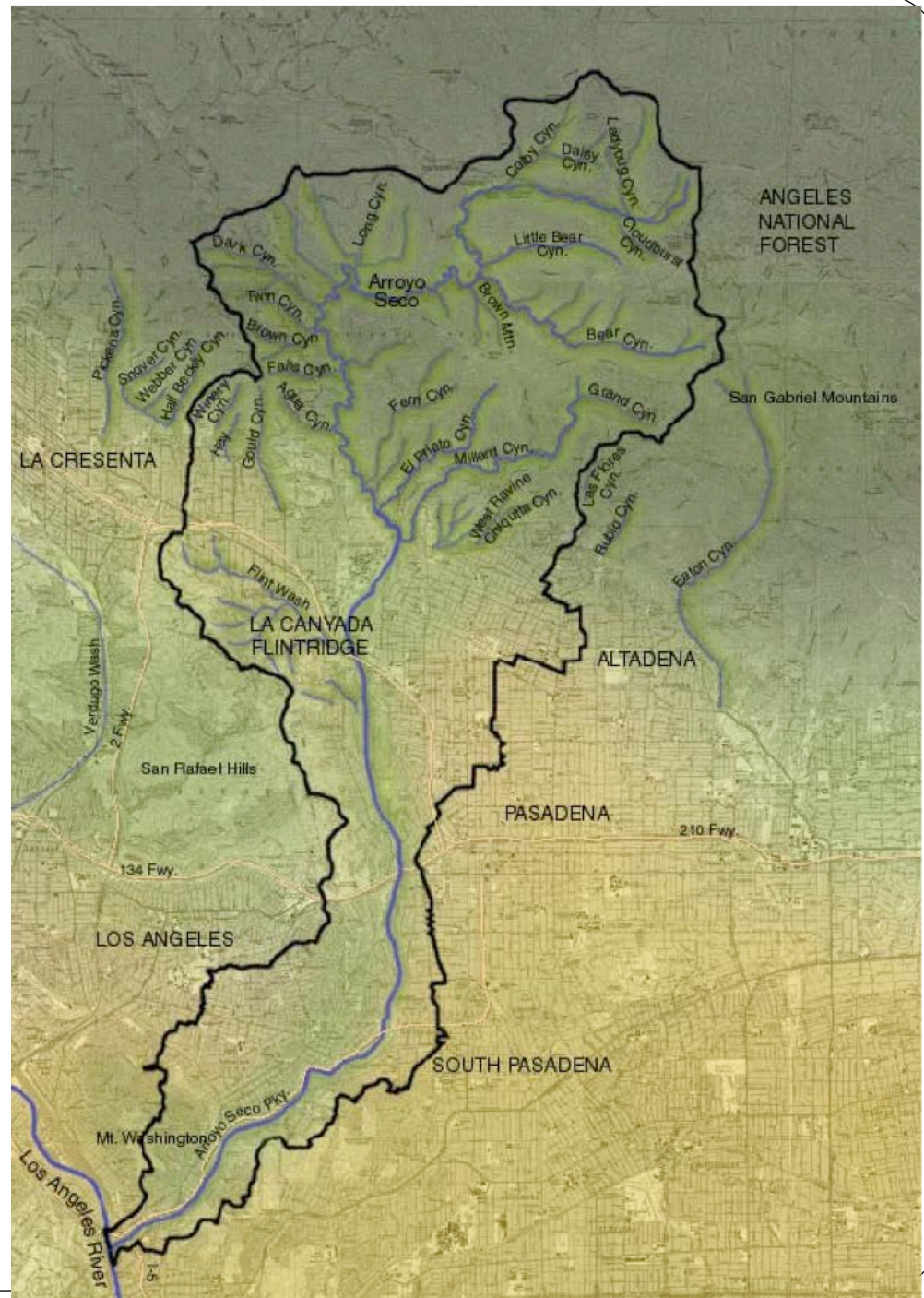
Los Angeles River-Arroyo Seco Confluence Restoration Vision Plan

Professor Meredith McKenzie, JD
Urban & Regional Planning Dept
Cal Poly Pomona

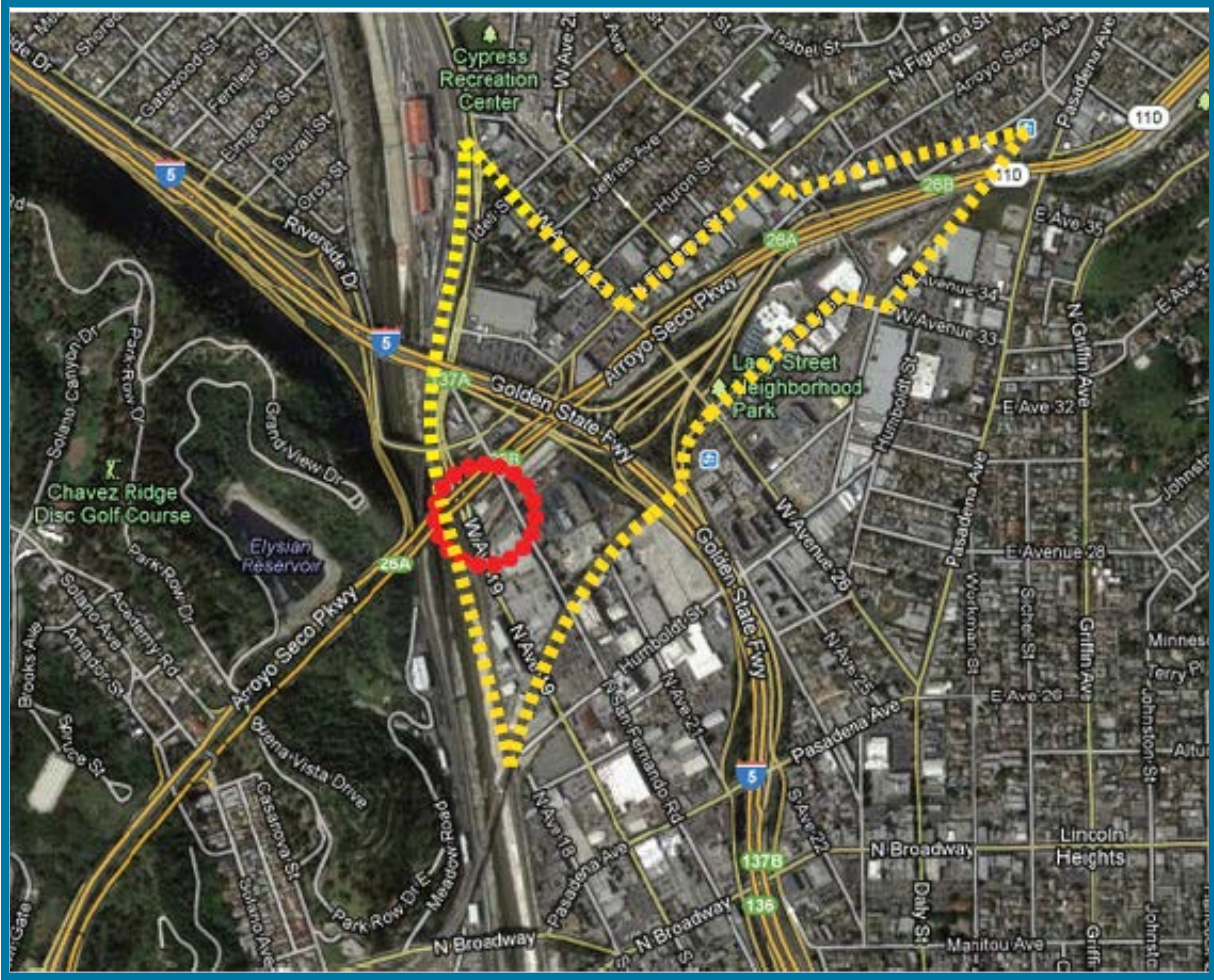


The Los Angeles River Watershed

Arroyo Seco Watershed
Map with Los Angeles
River Confluence



The Confluence



LEGEND

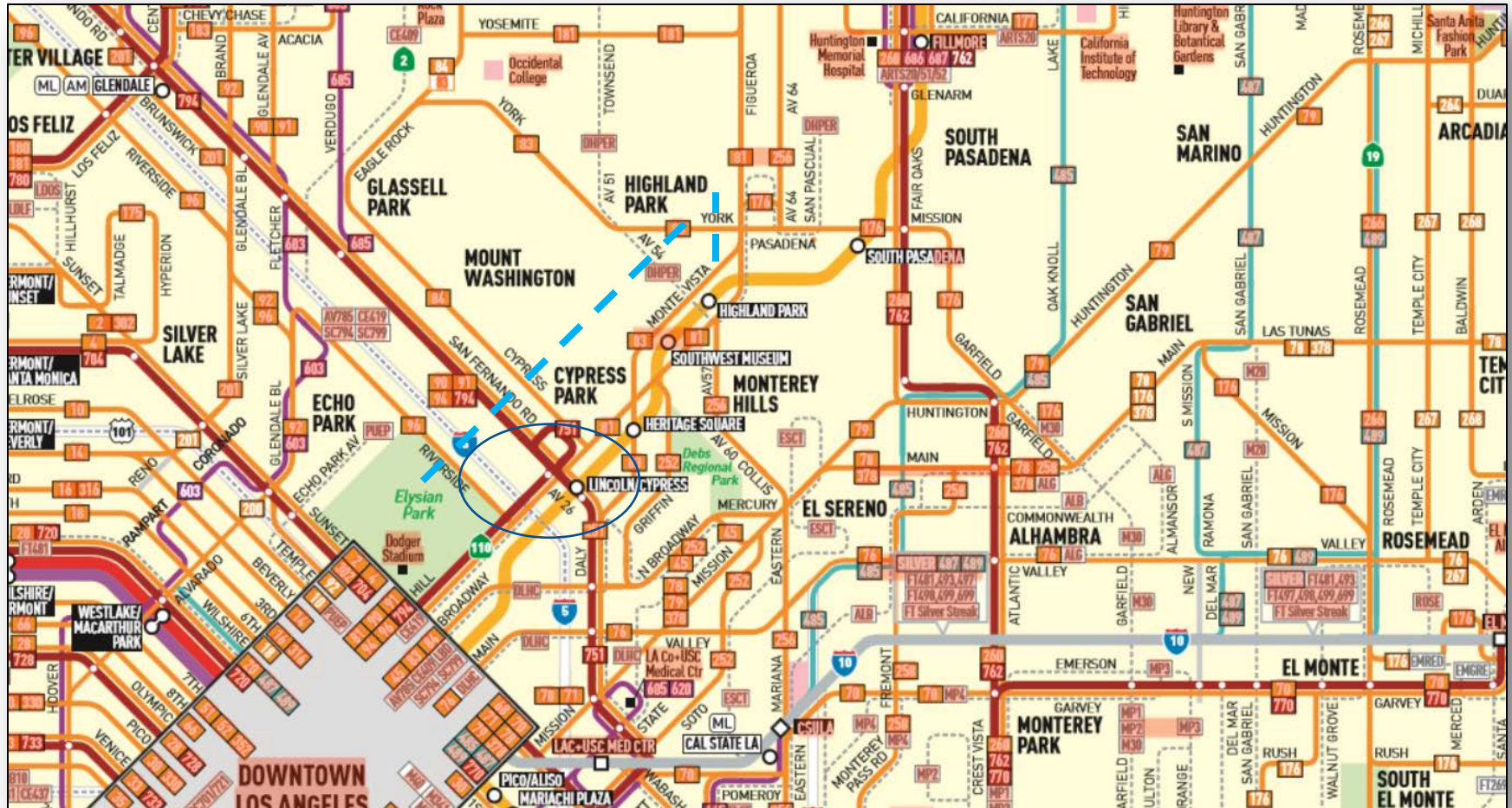
Proposed Site's Boundaries



Confluence

Courtesy of: Google Maps

Metro Transit



Courtesy of Metro, website: <http://www.metro.net>

Historic Conditions

- Confluence at the Arroyo Seco and LA River in a relatively natural state in 1920
- Arroyo Seco has 4 spaces to allow flow under Avenue 19 bridge
- It is also lined by significant riparian habitat
- Bridge in the foreground had a capacity to handle flood flows



Courtesy of: Arroyo Seco Foundation. Website: www.arroyoseco.org

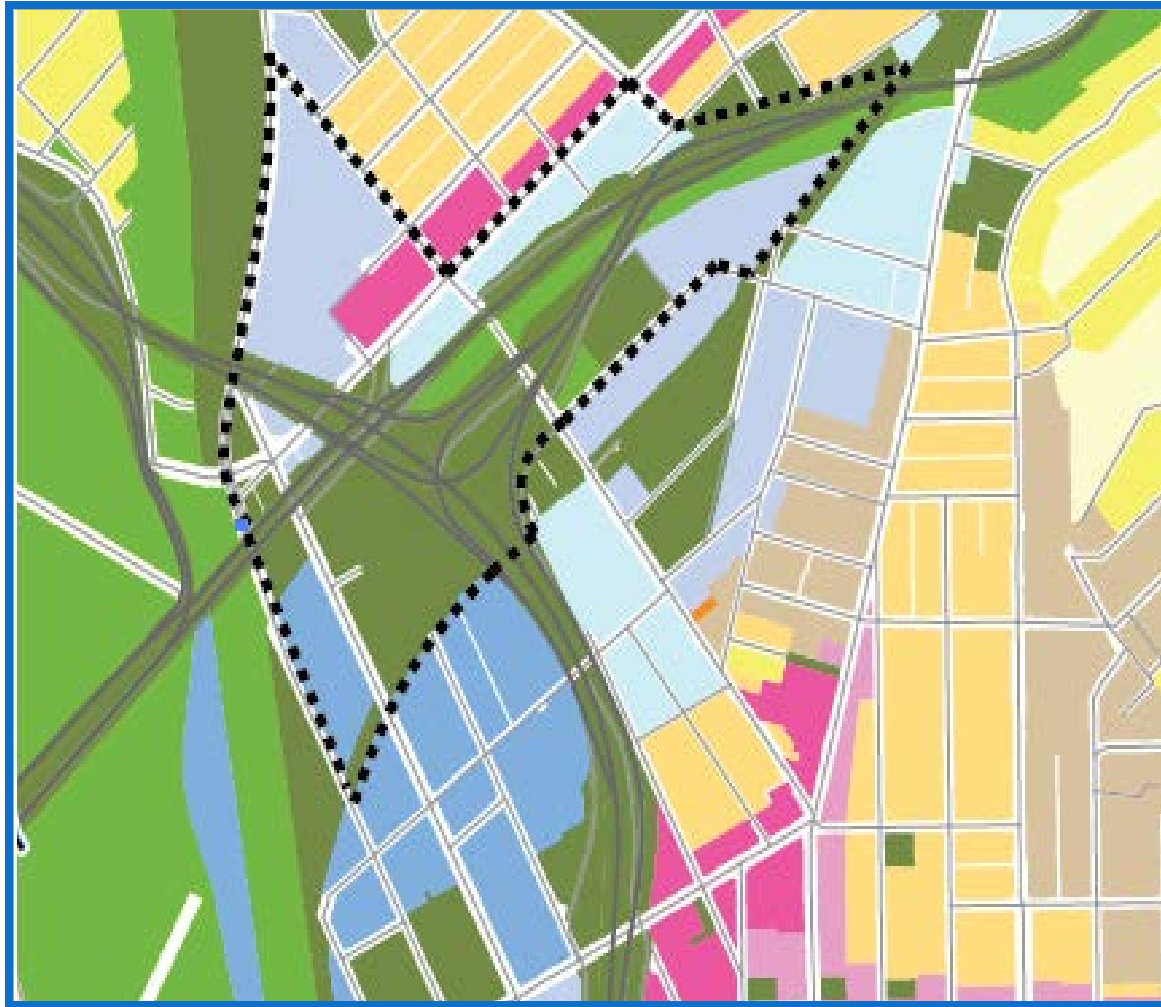
Current Conditions

- Only one way for the the river to flow (under Avenue 19 bridge)
- Channel is now blocked by a retaining wall
- Confluence is significantly narrowed
- Contains no habitat in the stream
- Still contains significant amount of trees along the rim of the Arroyo



Courtesy of: Arroyo Seco Foundation. Website: www.arroyoseco.org

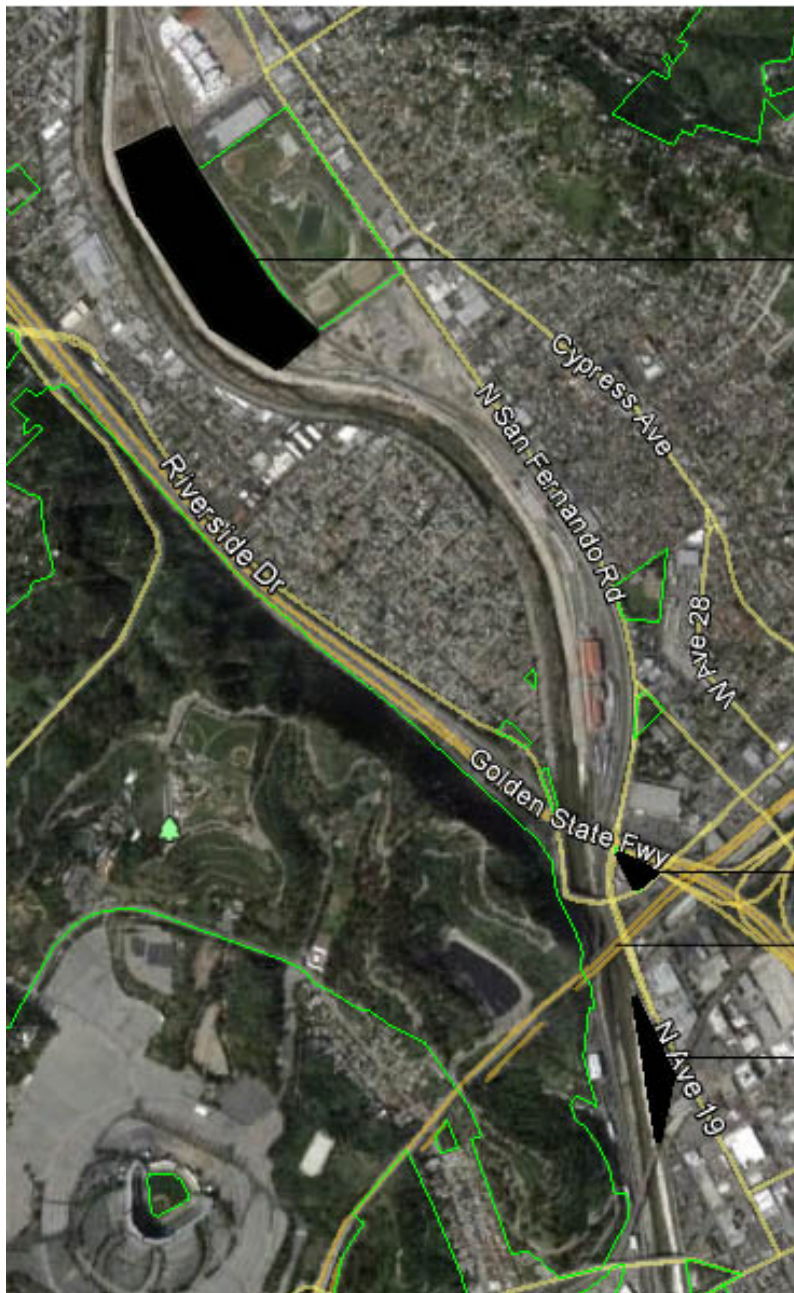
Existing Land Uses



LEGEND

SINGLE FAMILY	COMMERCIAL
Low I	Limited Commercial
Low II	Neighborhood Commercial
MULTI FAMILY	INDUSTRIAL
Low Medium	Commercial Manufacturing
Low Medium I	Limited Industrial
Low Medium II	Light Industrial
Medium	Heavy Manufacturing
Open Space	
Public Facilities	
Parking	

CONFLUENCE: LARGER CONTEXT MAP



Taylor Yard

Existing Confluence Park

Confluence of the LA River and Arroyo Seco

Jailhouse Site

Goal

- Enhance the life, health, and safety of regional and local residents as well as ecological processes through social, educational, and environmental connections between the confluence, its communities and the watershed.



Objective: Social

- Attract local residences and disadvantaged communities to the river
- Attract visitors from Dodger Stadium/Elysian Park to confluence
- Improve quality of life, health, and safety of residences and visitors
- Create a pedestrian and bicyclist-friendly park
- Create a sense of identity for the confluence and local community
- Increase community stewardship
- Introduce active and passive activities for recreation and education

Objective: Educational

Educate residents and visitors about:

- Los Angeles River and Arroyo Seco
- History of Native Americans
- Native vegetation and wildlife
- Wetland and riparian habitat
- Environmental and sustainable planning, design, and living
- Water collection, treatment, and conservation
- Urban agriculture and edible gardens

Objective: Environmental

- Collect, treat and recycle water
- Create wetland and riparian habitats
- Create wildlife patches and corridors
- Use native plant materials for water treatment and conservation
- Use permeable surfaces for water percolation and groundwater recharge
- Design and build a sustainable community center

Water Flow:

The Challenge of River Water Levels

- **New regulations have made the use of effluent water acceptable to be released into the river.**
 - The river flows at a higher rate more consistently throughout the year.
 - Species become dependent on the increasing flow.



Riverine Restoration

- **Soft bed areas**
 - Encourage new and existing biological communities.
- **Native plantings**
 - Naturally help filter impurities.
 - Help sustain biological communities.
- **Create aquifer holding beds**
 - Channel water to allow communities to survive with lower flow.



Northwest Confluence Touchstones

- **Taylor Yard**
 - Rio De Los Angeles State Park
 - Parcel G1
- **LA River**
 - Glendale narrows
 - Soft Bottom portion of river
- **Elysian Valley Gateway Park**
 - Provides access to LA Greenway Trail



TAYLOR YARDS

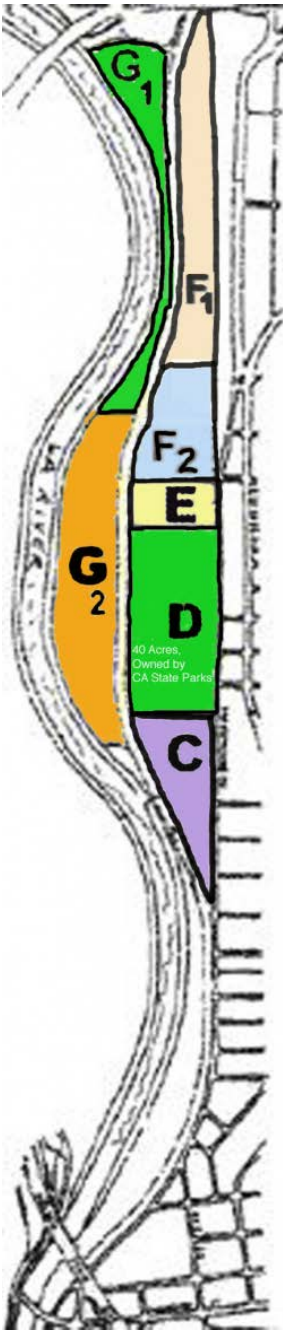
.Remediate Parcel G as a Wetland

.Develop Parcel D into a recreational area

- Global sustainability: Area is important link of Pacific Flyway
- Proximity of park to the soft-bottom section of the LA River places it in key position to enhance the function of the area.

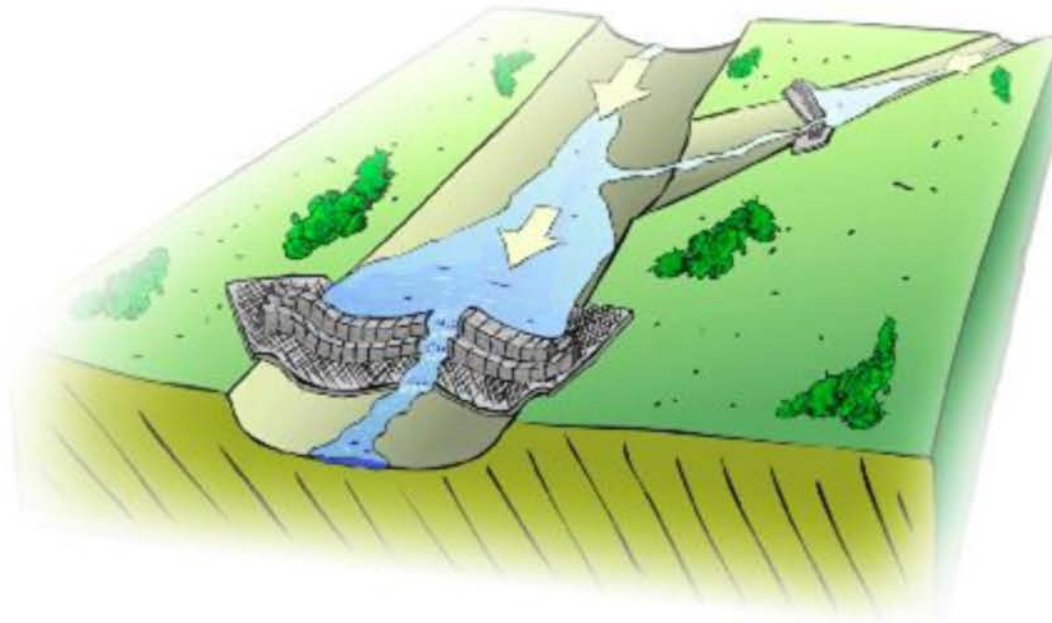
- **Recommended Actions**

- Restore native grassland habitats that enhance the viability of area's ecosystem.
- Create wetland habitats within the park that will become synergistic with the viability of riparian wetlands along the river



Check Dam

- Create a Check Dam to divert flow of water to and from Taylor Yards for manmade wetland water treatment and vegetative growth to restore animal habitat.



Northwest Confluence: Restoration Challenges

- **Restore Native Habitats**
 - Remediate soil and groundwater at Taylor Yard
 - Remove invasive species at Taylor Yard and LA River channel
 - Create wetlands / grasslands on Taylor Yard Parcel G
- **Provide Recreation**
 - Connect recreation trail to parkland
 - Access to river via terraced channel wall
- **Construct Northern Confluence Bridge**
 - Provide Mobility and Connectivity



Arroyo Seco Confluence Vision – Phase 1

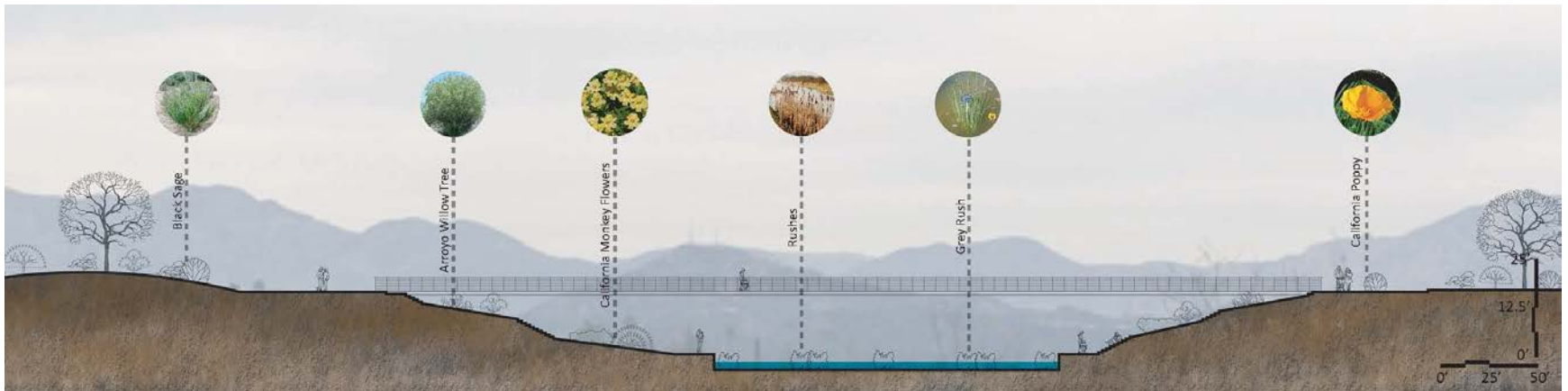


- Remove Arroyo Seco Parkway and ramps
- Modify concrete channel
- Introduce water treatment wetlands, pedestrian and bicycle paths, community center, active and passive parks for recreation and education

Sections

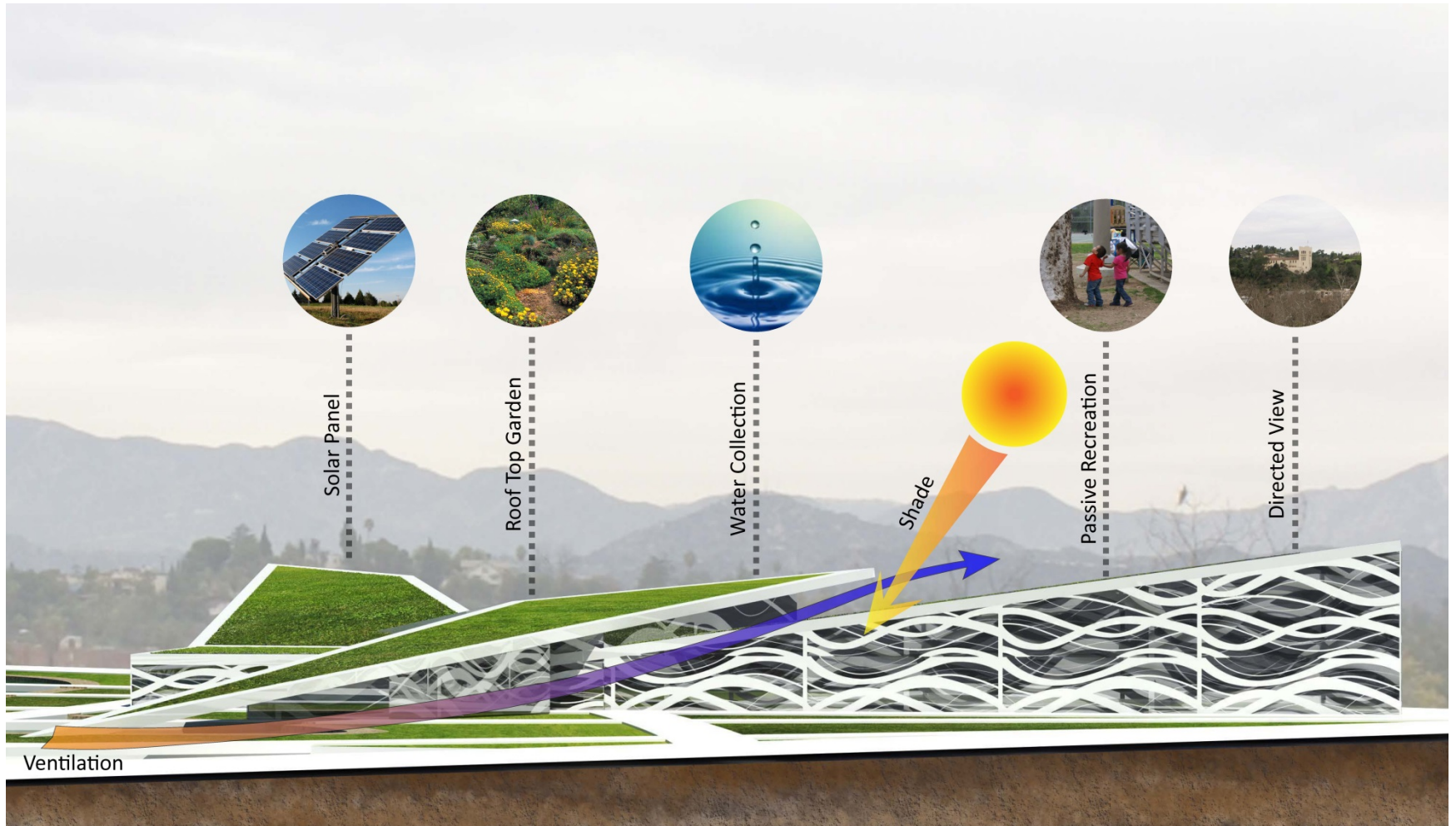


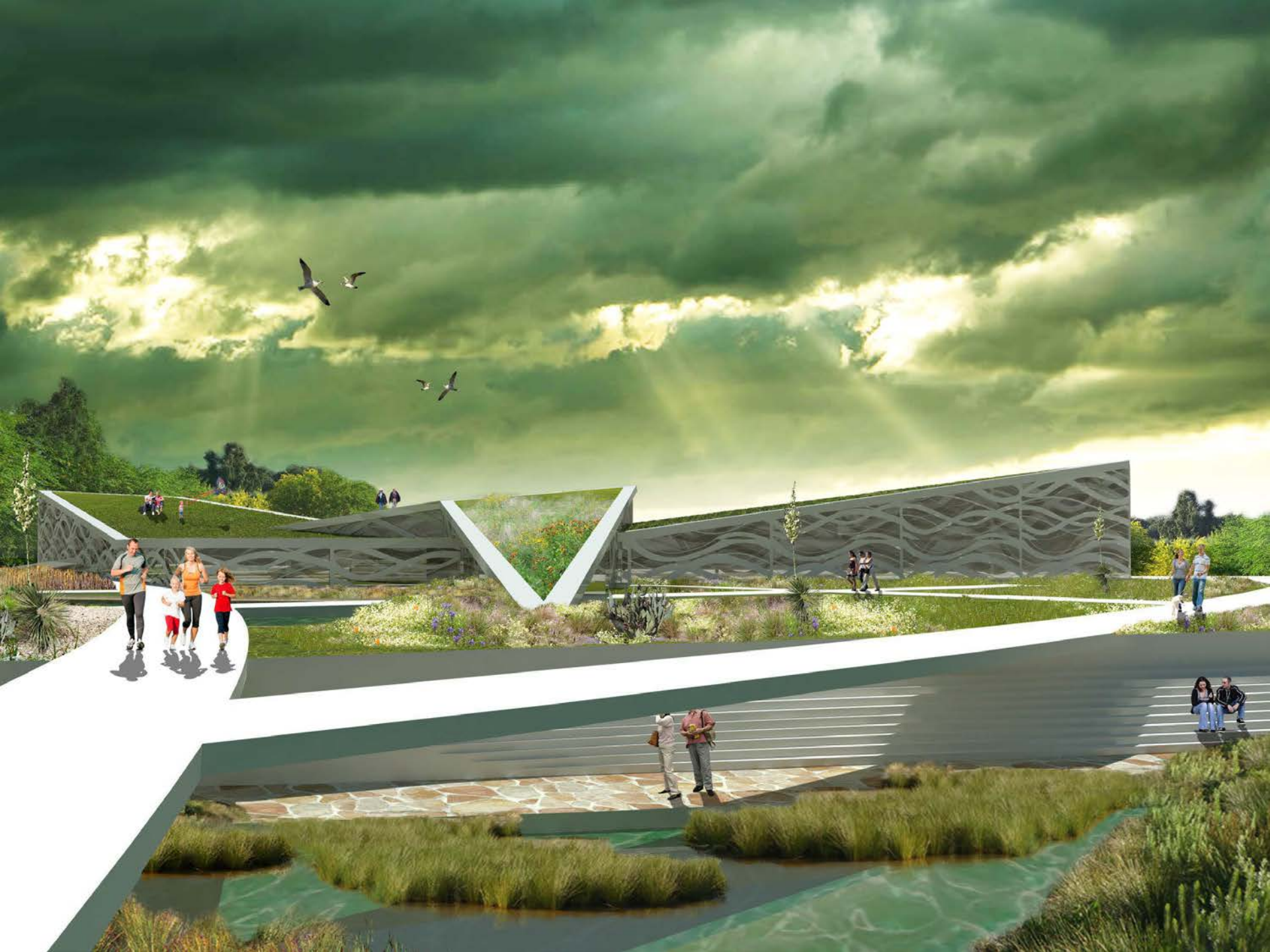
Section at Wetlands



Section at Arroyo Seco

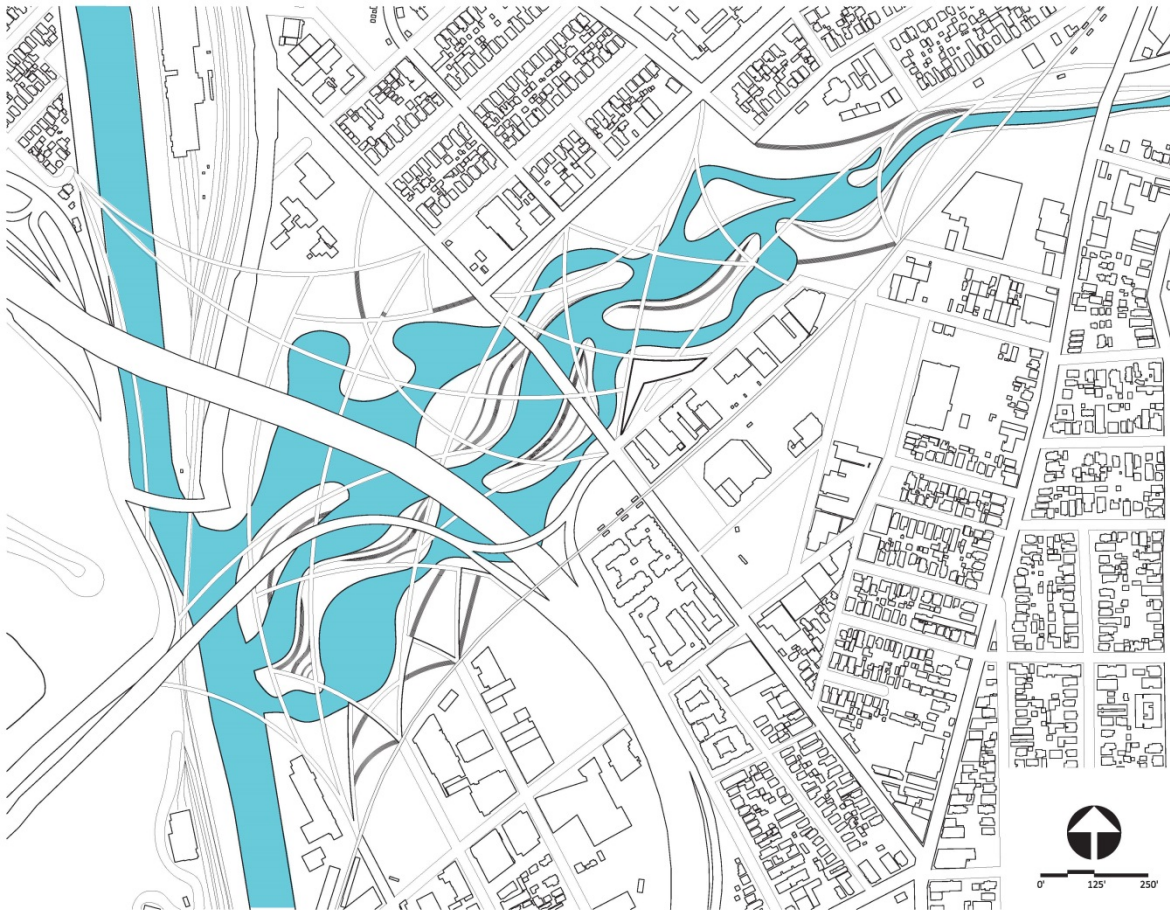
Community Center







Arroyo Seco Confluence Vision - Phase 2



- Further remove and naturalize concrete channel
- Connect individual wetlands and ponds to create network of riparian habitats
- Remove secondary circulations to protect native vegetation and wildlife habitats



For More Information, Contact Meredith at
arroyolover@gmail.com