

Ceramics and *Satoyama* in Japan

Student Housing Options

Wakatake-so

(No website, but you can find some information here:

http://www.echizentogeimura.com/syuhen/syukuhaku_e.html)

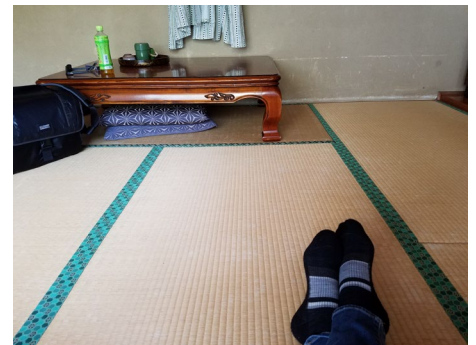
10 minute walk to the school

Quadruple occupancy	\$493
Double occupancy	\$652
Single occupancy	\$1260

Wakatake-so is a traditional Japanese ryokan with small tatami mat rooms with shared bathroom facilities near the rooms. Each room has a hotpot for tea, but generally they do not have the amenities of Western hotel rooms. Futons are laid out at night for sleeping and stowed in a closet during the day to make floor space available. An onsen (traditional Japanese bath) is available for bathing in the morning and at night; it is open to the public in the late afternoon/evening. Robes are provided for going to the onsen.

There are no private bathing options at the Wakatake-so. There are private toilet stalls, but the bathing facility is a traditional Japanese bath, where you will be expected to wash thoroughly at a shower-like station before getting into a communal hot-spring-fed bath. There are separate facilities for men and women.

The kitchen at the Wakatake-so will be the communal kitchen for the class; most dinners will be here. Students will be able to keep personal food items in the kitchen also.



Ceramics and *Satoyama* in Japan

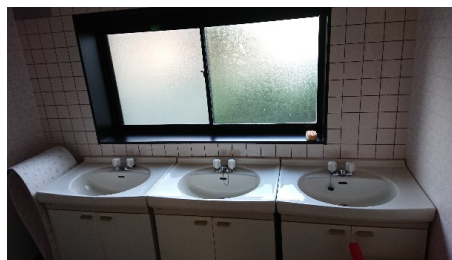
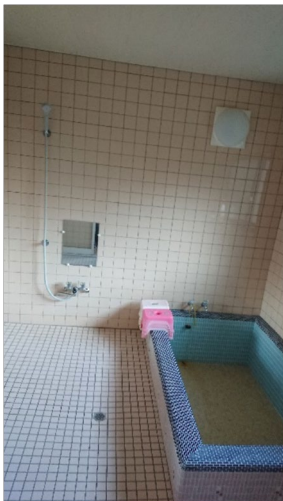
Student Housing Options

Ozowara-ku Minkaikan

8-minute walk to the school

Per person	\$333
------------	-------

Ozowara is a dormitory style large room where college and high school groups visiting Echizen typically stay. Futons are laid out in a common area. There are men's and women's bathroom and shower facilities. A small kitchen facility is available for student use. Depending on how many students sign up, there may be between 6 and 10 students sharing a single, large room.



Ceramics and *Satoyama* in Japan

Student Housing Options

Isshin-an

15-minute walk to the school

Per person	\$650
------------	-------

This is a private traditional house for rental. It has four rooms: an entrance, a tatami room for sleeping, a tokonoma room that also could be used for sleeping, and a traditional hearth room (place for a coal fire in the center), in addition to a kitchen area and a bathroom.

There is one bathroom that will be shared between all participants. There are two possible rooms for sleeping; participants will be expected to work out the rooming arrangements on their own.

Summer Arts will book 4 PEOPLE in this house.

