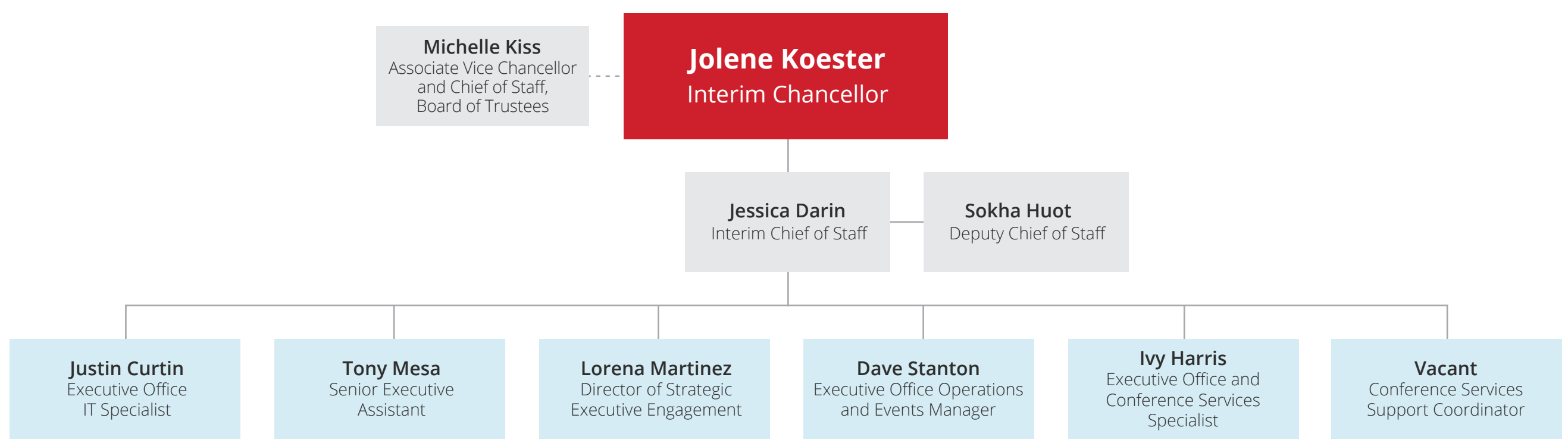
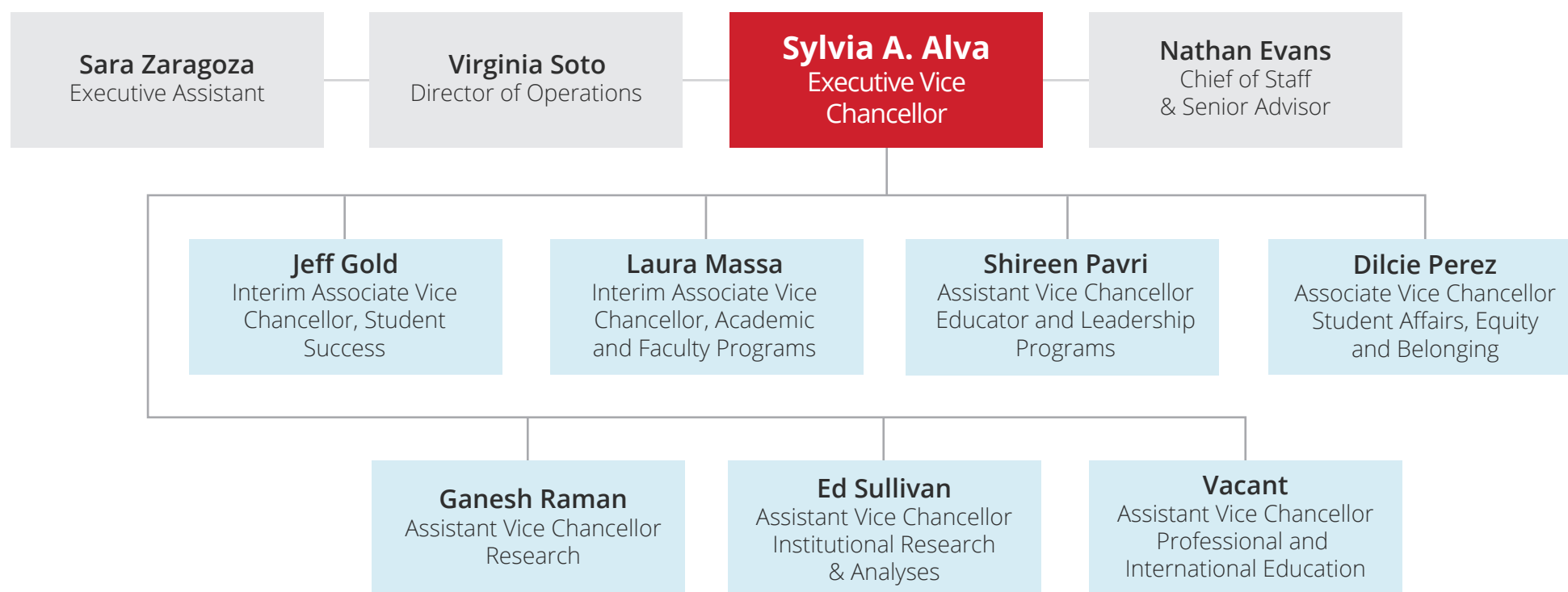


CSU OFFICE OF THE CHANCELLOR

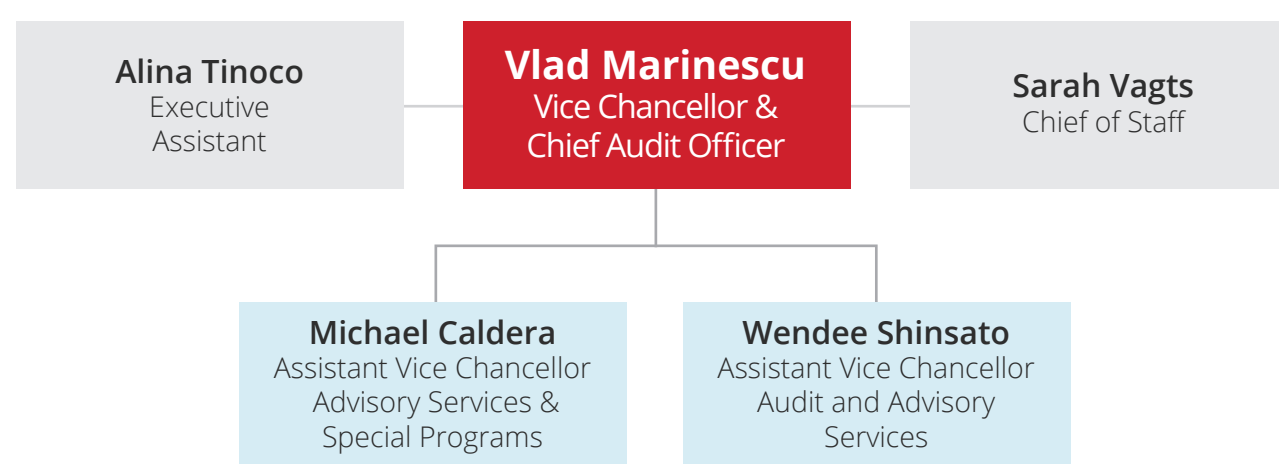
ORGANIZATIONAL CHART



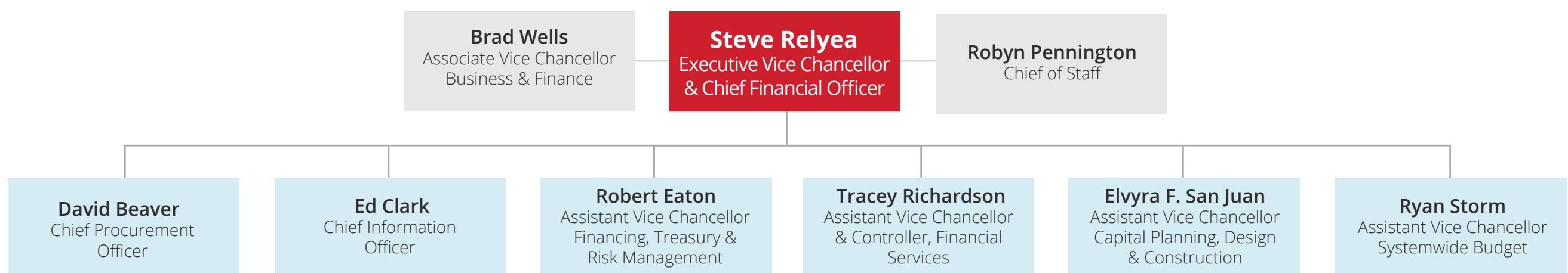
ACADEMIC & STUDENT AFFAIRS



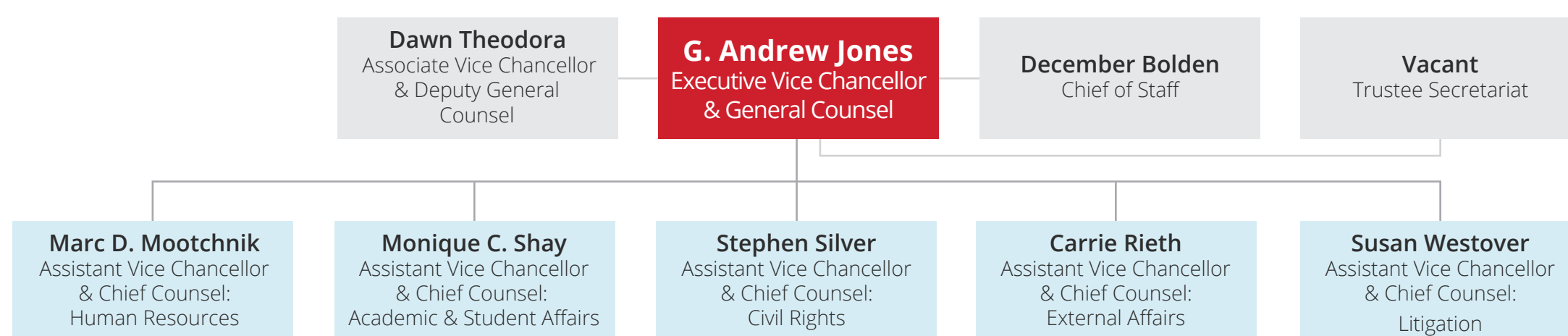
AUDIT & ADVISORY SERVICES



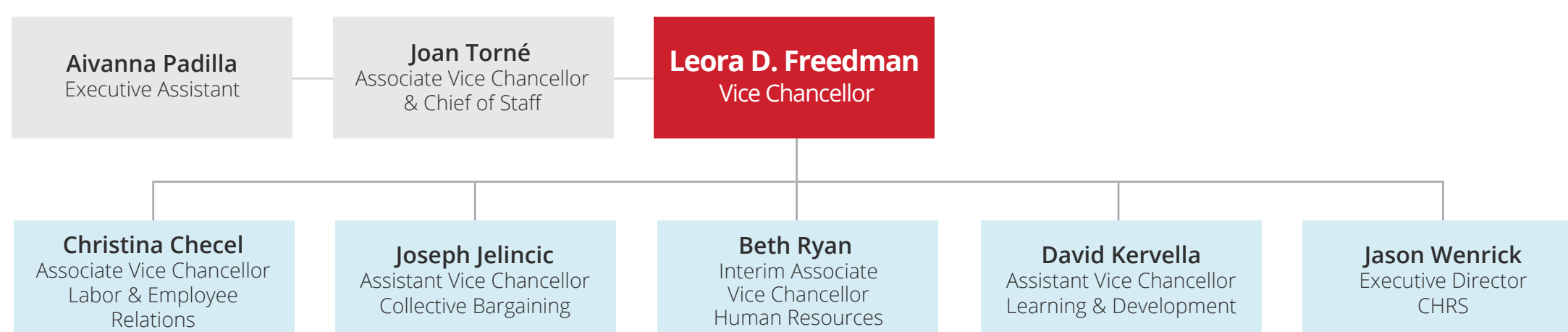
BUSINESS & FINANCE



OFFICE OF GENERAL COUNSEL



SYSTEMWIDE HUMAN RESOURCES



UNIVERSITY RELATIONS & ADVANCEMENT

