

**CSU** The California State University

# FACT BOOK

2021



## TABLE OF CONTENTS

- 1** Introduction
- 7** Graduation Initiative 2025
- 11** Students
  - 13 Enrollment
  - 13 Demographics
  - 14 Applying
  - 17 Costs
- 19** Employees
- 23** Research and Community Impact
- 29** CSU Funding
- 35** CSU Leadership



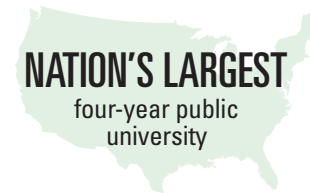
“The California State University is the nation’s largest, most diverse and most consequential university. The CSU’s extraordinarily talented students experience a transformative journey of learning and discovery, and graduate as the next generation of bold, ethical and compassionate leaders, ready to drive our state and nation to its brightest future.”

Joseph I. Castro  
Chancellor, California State University



# INTRODUCTION

The California State University promotes student success through opportunity and a high-quality education that prepares students to become leaders in the changing workforce, making the CSU a vital economic engine for California.



**23 CAMPUSES. ONE UNIVERSITY.**



## THE CSU

- is the nation's largest four-year public university, with 23 campuses and eight off-campus centers.
- educates the most ethnically, economically and academically diverse student body in the nation.
- is renowned for the quality of its teaching and preparing job-ready graduates.
- educates approximately 486,000 students.
- employs nearly 56,000 faculty and staff.
- stretches 800 miles from Humboldt in the north to San Diego in the south.
- has conferred degrees on more than 3.9 million living alumni.



**NEARLY HALF**  
of the state's bachelor's  
degrees are awarded  
by the CSU



**129,000**  
degrees conferred  
annually



**3.9 MILLION**  
living alumni  
and counting



**800 MILES**  
stretching  
from Humboldt  
to San Diego



**ONE IN TEN**  
employees in California  
is a CSU graduate



**NEARLY 56,000**  
faculty and staff are  
employed by the CSU





## OPPORTUNITY

The CSU creates opportunity for the diverse students of California to reach their educational goals and become leading citizens. Nearly one-third of CSU students are the first in their families to attend college.

## PREPARATION

The CSU plays a critical role in providing future leaders with the skills and knowledge they'll need to thrive in the workforce and help drive California's economy. The CSU produces nearly half the state's bachelor's degrees, sending nearly 129,000 job-ready graduates into the workforce each year.

## QUALITY

The CSU prepares students for success through leading-edge programs, superior teaching and scholarly activity. High-quality academic programs reflect California's current and future workforce demands in emerging fields such as cybersecurity, software engineering, sustainable business and environmental technology.

## LEADERSHIP

Through the caliber of its academic programs and a university-wide commitment to student achievement, the CSU is dedicated to fostering leaders. Across the campuses and in communities throughout the state, the CSU's faculty, staff, students and alumni are addressing critical issues facing our state and nation.

## INCLUSIVE EXCELLENCE

The CSU strives to create a welcoming environment for all members of its campus communities. This commitment to inclusive excellence is manifested in students who make up the most ethnically, economically and academically diverse student body in the nation, attaining higher levels of success than ever as graduation rates continue to reach all-time highs. The CSU is an engine of social mobility as those students receive high-quality educations that propel them into higher economic strata. The CSU provides more than half of all undergraduate degrees earned by California's Latinx, African American and Native American students combined. Twenty-one of 23 CSUs are currently recognized by the Department of Education as Hispanic-Serving Institutions (HSIs), colleges and universities with a Latinx student enrollment of at least 25 percent.

## MASTER PLAN FOR HIGHER EDUCATION

The CSU was created in 1960 under the California Master Plan for Higher Education. The CSU draws its students from the top third of the state's high school graduates and is California's primary undergraduate teaching institution. Continuing to expand its educational scope and help meet California's workforce demands for skilled professionals, the CSU offers independent doctorates in audiology, education, nursing practice and physical therapy programs at numerous campuses. Additionally, the CSU was recently authorized to offer the independent Occupational Therapy Doctorate. The Doctor of Philosophy is also offered through a joint partnership with other public and private universities in California.







## GRADUATION INITIATIVE 2025

Graduation Initiative 2025 aims to increase graduation rates for all CSU students while eliminating opportunity and achievement gaps. Through this initiative, the CSU will ensure that all students have the opportunity to graduate in a timely manner according to their personal goals, positively impacting their future while producing the graduates needed to power California and the nation.





Since its launch in 2016, the initiative has already seen success in bringing completion rates to all-time highs in all categories and narrowing equity gaps between underserved students and their peers.

In 2019-20, the CSU graduated 1,525 more students than the previous year.

DEGREES CONFERRED 2019-20		
Bachelor's Degrees	109,450	84.9%
Master's Degrees	18,883	14.6%
Doctoral Degrees	592	0.5%
<b>Total</b>	<b>128,925</b>	<b>100%</b>



**128,925**  
degrees conferred

Learn more at [calstate.edu/graduationinitiative](https://calstate.edu/graduationinitiative)





# STUDENTS

CSU students largely come from California and mostly remain in the state after graduation, applying the skills and knowledge they have learned to help California's economy thrive.

**95 PERCENT**  
of all enrolled  
students come  
from CA

**95 PERCENT**  
of new undergraduate  
transfers come from  
CA community  
colleges

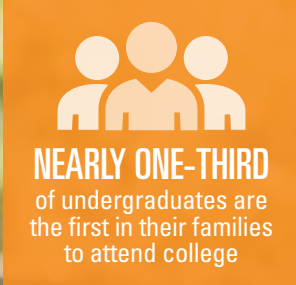
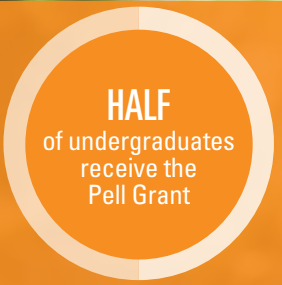
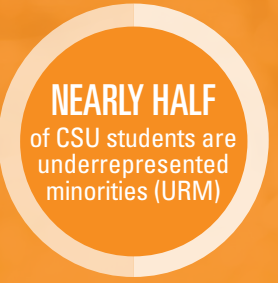
**89 PERCENT**  
of first-time  
students come  
from CA public  
high schools





**485,550**

students enrolled in the CSU in fall 2020



**UNIVERSITY-WIDE ENROLLMENT— FALL 2015-20**

<b>2015</b>	<b>474,571</b>
<b>2016</b>	<b>478,638</b>
<b>2017</b>	<b>484,297</b>
<b>2018</b>	<b>481,210</b>
<b>2019</b>	<b>481,929</b>
<b>2020</b>	<b>485,550</b>



**ENROLLMENT BY CAMPUS**

<b>FALL 2020</b>	
Bakersfield	11,397
Channel Islands	6,943
Chico	16,630
Dominguez Hills	17,763
East Bay	14,641
Fresno	25,341
Fullerton	41,408
Humboldt	6,431
Long Beach	39,359
Los Angeles	26,342
Maritime Academy	907
Monterey Bay	6,871
Northridge	38,815
Pomona	29,704
Sacramento	31,451
San Bernardino	19,404
San Diego	35,578
San Francisco	27,075
San José	33,025
San Luis Obispo	22,287
San Marcos	14,643
Sonoma	7,807
Stanislaus	10,741
International Programs	26
CalStateTEACH	961
<b>Total</b>	<b>485,550</b>

**FALL 2020 ENROLLMENT (TOTAL 485,550)**

<b>BY GRADE</b>		
Freshman	78,248	16.1%
Sophomore	61,525	12.7%
Junior	127,761	26.3%
Senior	164,730	33.9%
Postbaccalaureate	12,611	2.6%
Graduate	40,675	8.4%
<b>BY AGE</b>		
17 and under	7,377	1.5%
18-24	359,386	74.0%
25-29	68,876	14.2%
30-34	24,742	5.1%
35-39	10,904	2.3%
40-49	9,703	2.0%
Over 49	4,562	0.9%
<b>BY ETHNICITY</b>		
African American	19,645	4.0%
American Indian	987	0.2%
Asian/Pacific Islander	76,509	15.8%
Hispanic/Latinx	217,232	44.7%
White	106,603	22.0%
Other/Unknown	17,464	3.6%
Two or More Races	20,798	4.3%
Non-Resident Alien	26,312	5.4%
<b>BY GENDER</b>		
Men	206,198	42.5%
Women	279,352	57.5%

## GRADUATE STUDIES

- In fall 2020, the CSU enrolled 53,286 postbaccalaureate/graduate students.
- 18,883 master's degrees were awarded in 2019-20.
- Doctor of Audiology, Doctor of Education, Doctor of Nursing, Doctor of Philosophy and Doctor of Physical Therapy programs serve more than 2,331 doctoral students from diverse backgrounds, preparing them for top leadership roles.

## APPLYING

Students planning to enter the CSU can apply through the online application tool, Cal State Apply, at [calstate.edu/apply](https://calstate.edu/apply).

Due to the large number of applicants, some CSU campuses have higher standards (supplementary admission criteria) for particular majors or for students who live outside the local campus area. Campuses utilize local admission guarantee policies for students who graduate or transfer from high schools and community colleges that are historically served by a CSU campus in that region.

## ADMISSION REQUIREMENTS

### First-time Students

First-time applicants must meet the standards in each of the following areas:

- Complete specific high school coursework.
- Achieve suitable grades in specified courses.
- Graduate from high school or equivalent.

## TRANSFER AND GRADUATE STUDENTS

The majority of transfer students enter as upper-division transfers and must complete at least 60 semester or 90 quarter units and required GE before transferring. Students who have earned an Associate Degree for Transfer (ADT) and are admitted to a similar bachelor's program will be admitted to the CSU with junior status.

To apply for admission to graduate or postbaccalaureate studies, a student must:

- Earn a baccalaureate degree from an accredited institution with at least a 2.5 grade point average.
- Be in good academic standing while satisfactorily meeting the professional, personal, scholastic and other standards for graduate study.

**CALSTATE.EDU/APPLY**





### CSU TUITION FEES: 2020-21\*

- Undergraduate: \$5,742
- Credential: \$6,660
- Graduate/Postbaccalaureate: \$7,176
- Audiology Doctorate: \$14,742
- Education Doctorate: \$11,838
- Nursing Practice Doctorate: \$15,270
- Physical Therapy Doctorate: \$17,196

(Campus-based fees add an average of \$1,621 to student costs.)

### Graduate Business Professional Fee

State university tuition fee plus \$270 per semester unit or \$180 per quarter unit.

### Out-of-State Students

State university tuition fee plus \$396 per semester unit or \$264 per quarter unit.

\*Rates are for academic year

### FINANCIAL AID

In 2019-20, over \$4.5 billion was distributed to more than 391,000 students—83 percent of the CSU's total student population. The average award was \$11,616. Presidential Scholars' programs, which provide full scholarships to National Merit scholars and high school valedictorians, are also available at many CSU campuses.

**Financial Aid Information:** [calstate.edu/financial-aid](https://calstate.edu/financial-aid)





## EMPLOYEES

Much like the students we serve every day, the CSU's faculty and staff are exceptionally diverse and talented, making the CSU a special place to both work and learn. Their unparalleled commitment to quality instruction and provision of services is shaping the future of California.



## HEADCOUNT OF EMPLOYEES BY EMPLOYEE GROUP, FALL 2020<sup>1</sup>

Description	Full Time	Part Time	Total	% of Total
Instructional Faculty	13,496	13,438	26,934	48.2%
Non-Instructional Faculty	956	260	1,216	2.2%
Staff	19,302	735	20,037	35.8%
Executive and Management	4,452	26	4,478	8.0%
Represented Student Employees	2	3,242	3,244	5.8%
<b>Total</b>	<b>38,208</b>	<b>17,701</b>	<b>55,909</b>	<b>100%</b>

1. Employee reporting has been aligned with the 2020 Standard Occupational Classifications published by the National Bureau of Labor Statistics.

## INSTRUCTIONAL FACULTY BY TIME BASE, FALL 2020

Time Base	Count	% of Total
Full Time	13,496	50.1%
Part Time	13,438	49.9%
<b>Total</b>	<b>26,934</b>	<b>100%</b>

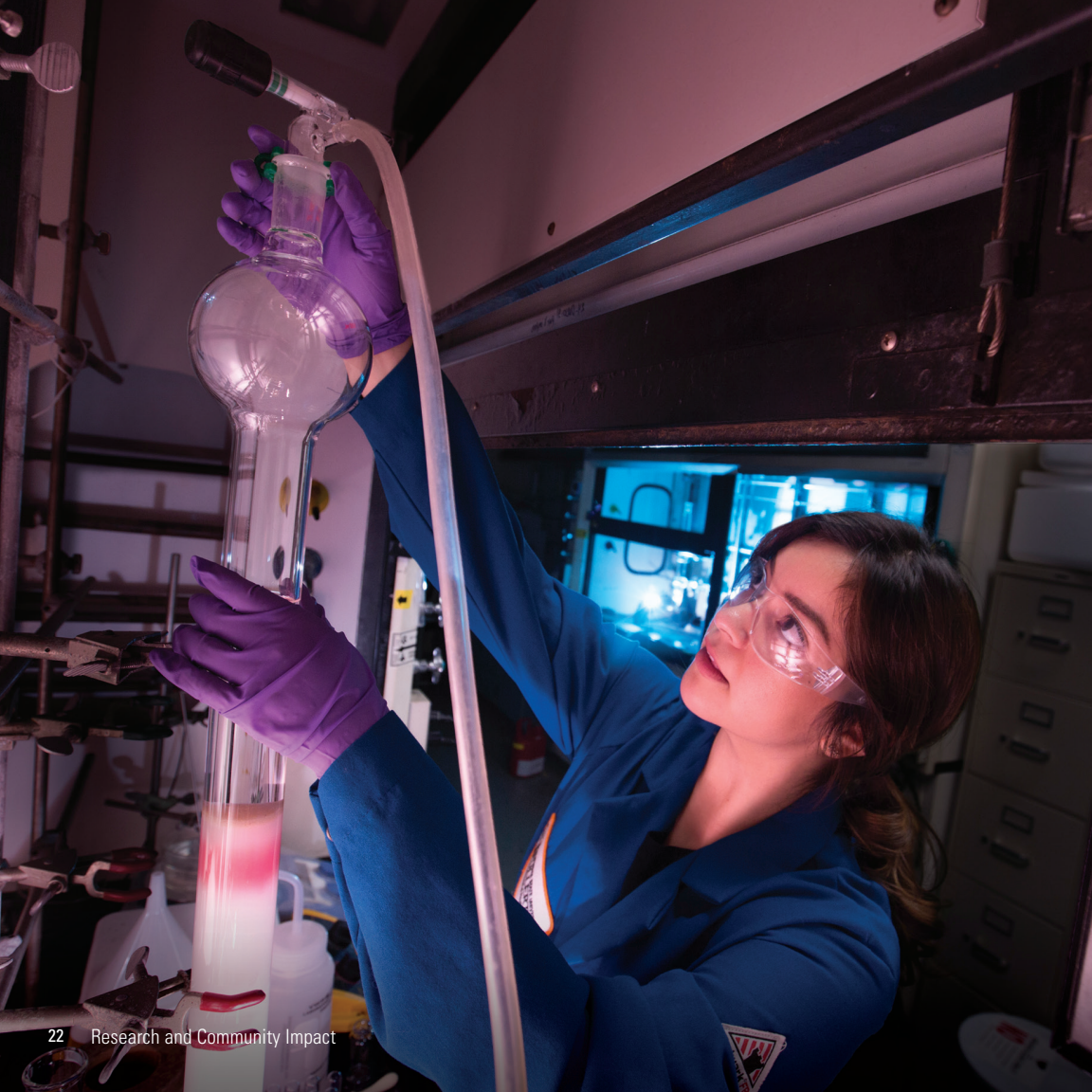
## FULL TIME INSTRUCTIONAL FACULTY BY ACADEMIC RANK, FALL 2020

Academic Rank	Full Time Count	% of Total
Professor	4,723	35.0%
Associate Professor	2,526	18.7%
Assistant Professor	3,325	24.6%
Lecturer	2,922	21.7%
<b>Total</b>	<b>13,496</b>	<b>100%</b>

Note: Data includes all employees with the exception of non-represented student employees, other intermittent or casual employees, and faculty teaching in extension, special sessions, and summer sessions.

For data definitions and additional statistics, please see the CSU Employee Profile at [calstate.edu/her/employee-profile/](http://calstate.edu/her/employee-profile/)





## RESEARCH AND COMMUNITY IMPACT

CSU students are encouraged to apply the knowledge gained in the classroom to find solutions to real-world problems through involvement in applied research and service-learning. Under the guidance of world-renowned faculty who are experts in their fields, students develop leadership skills while benefiting their communities.



## RESEARCH, SCHOLARSHIP AND CREATIVE ACTIVITY

- Research, scholarship and creative activities are intrinsic to the CSU. These hands-on opportunities provide a high-quality education where students can engage with course content, develop and test hypotheses and push boundaries.
- The CSU is distinctive for making this high-impact practice available to undergraduate and graduate students through an experiential learning model in which students work with faculty scholars on research, scholarship and creative projects.
- The CSU's impact on California is also evident through the work of its 10 multi-campus affinity groups. They conduct research on a breadth of topics essential to the state—from agriculture and biotechnology to ocean and desert life.
- Research, scholarship and creative activities also enable the CSU to maintain faculty excellence by recruiting and retaining top-tier, world-class faculty. Alongside students, CSU faculty stimulate innovation and create new knowledge, keeping curricula at the leading-edge of its respective disciplines. Research also provides faculty an opportunity to demonstrate leadership in their discipline through peer-reviewed awards, presentations, performances and publications.

Stay up to date on new research developments at [calstate.edu/research](https://calstate.edu/research)







### COMMUNITY ENGAGEMENT AT THE CSU

The California State University has been partnering with their local communities since the first campus was founded in 1857. With the establishment of the CSU Center for Community Engagement (CCE) in 1998, these partnerships have prepared one million CSU graduates to be change makers across California's rich and diverse communities. Today, CCE actively advances the CSU's commitment to inclusivity, equity and student success through high-quality community programs and scholarship.

During the COVID-19 pandemic in 2019-20, when most community engagement placements were either canceled or moved to remote:

- Centers for Community Engagement and Service-Learning, in partnership with 1,167 CSU faculty and 5,400 community organizations, made available nearly 3,200 service-learning courses.
- 64,000 CSU students—13% of the total student population—contributed 934,000 hours of service to their communities through service-learning.



**5,400**

5,400 community and  
faculty partners



**64,000**

64,000 student  
volunteers



**934,000**

934,000  
hours of  
service





## CSU FUNDING

The CSU's operating budget has two main funding sources: the state General Fund and student tuition and fees. State funding now covers slightly more than half of the CSU's operating costs, with tuition and fees making up for the remainder. Auxiliaries and philanthropic support generate additional revenue needed for essential services that supplement state-supported activities.

CSU 2020-21 State Support	
General Fund Appropriations <sup>1</sup>	3,722,806,000
Gross Tuition Fees and Other Fee Revenue	3,102,578,000
Total General Fund and Student Fees	6,825,384,000
Summer Term Financial Aid <sup>2</sup>	6,000,000
<b>Total State Support</b>	<b>\$6,831,384,000</b>

<sup>1</sup> The 2020/21 Final Budget total includes \$305.5M for general obligation and lease revenue bonds.

<sup>2</sup> Fiscal Year 2020/21 One-Time Budget Allocations appropriated by the 2020 Budget Act (Assembly Bill 89, Chapter 7).

Campus Budgets (2020-21)	
(General Fund and Gross Tuition Fee & Other Fee Revenue)	
Bakersfield	144,100,000
Channel Islands	125,164,000
Chico	229,456,000
Dominguez Hills	199,306,000
East Bay	198,841,000
Fresno	316,367,000
Fullerton	459,109,000
Humboldt	126,061,000
Long Beach	478,670,000
Los Angeles	330,562,000
Maritime Academy	44,449,000
Monterey Bay	123,502,000
Northridge	459,430,000
Pomona	326,969,000
Sacramento	375,422,000
San Bernardino	247,962,000
San Diego	463,548,000
San Francisco	367,852,000
San José	412,266,000
San Luis Obispo	367,820,000
San Marcos	191,420,000
Sonoma	116,157,000
Stanislaus	136,582,000
Campus Total	6,241,015,000
Chancellor's Office and University-Wide Programs	155,817,000
University-Wide Provisions <sup>1</sup>	428,552,000
<b>Grand Total</b>	<b>\$6,825,384,000</b>

## AUXILIARY ORGANIZATIONS

Auxiliary organizations are entrepreneurial and service-oriented, providing a wide array of support services, programs and facilities that further the educational mission of the CSU. Approximately 91 self-supporting auxiliary organizations operate without state General Fund money and are organized on each campus as separate legal entities.

### In 2019-20:

- Auxiliaries managed \$5.2 billion, representing 23 percent of the CSU's \$22.3 billion combined total assets.
- Auxiliary revenues reached \$1.9 billion, representing 16 percent of the \$12.2 billion combined total revenues.
- \$598 million, 20 percent of the \$3 billion combined total of contracts and grants revenue, was managed by auxiliaries.

For more information about CSU auxiliaries, visit

**AUXILIARY.CALSTATE.EDU**





## PHILANTHROPIC SUPPORT

In 2019-20, philanthropic giving to the CSU again reached all-time highs. The university received over \$641 million in gift commitments and over \$408 million in gift receipts. This history-making support affirms donors' lasting confidence in the CSU's ability to transform lives, families and communities. In 2019-20:

- Gifts from individuals totaled over \$230 million from 242,751 individual donors.
- Gifts from alumni made up 31 percent of individual giving, with \$71 million in contributions.
- Gifts from organizations totaled \$178 million, including \$72 million from foundations.
- Almost \$64 million from corporations, including 2,306 matching gifts, were received.
- Donors contributed more than \$408 million in charitable gift receipts—cash, securities, in-kind contributions, irrevocable future commitments and private charitable grants.
- Total endowment market value reached \$1.89 billion university-wide, another all-time high.



**\$641 MILLION**  
in charitable  
gift commitments



**242,751**  
individual  
donors



**\$1.89 BILLION**  
endowment  
market value



## CSU LEADERSHIP

Responsibility for the CSU is vested in a 25-member Board of Trustees, the majority of whom are appointed by the governor to eight-year terms.

Faculty, alumni and two student trustees serve two-year terms. The trustees appoint the chancellor, who is the university's chief executive officer, and the presidents, who are the chief executive officers of their respective campuses and report to the chancellor. The trustees, chancellor and presidents develop university-wide policies.





## BOARD OF TRUSTEES

Ex Officio Members

Governor Gavin Newsom

Lieutenant Governor Eleni Kounalakis

Speaker of the Assembly Anthony Rendon

State Superintendent of Public Instruction Tony Thurmond

CSU Chancellor Joseph I. Castro

## APPOINTED MEMBERS

(term ends during the year shown)

Silas Abrego (2021)

Larry L. Adamson (2022)

Diego Arambula (2028)

Jane W. Carney (2022)

Jack B. Clarke, Jr. (2027)

Adam Day (2023)

Douglas Faigin (2025)

Debra S. Farar (2022)

Jean Picker Firstenberg (2026)

Wenda Fong, Vice Chair (2024)

Maryana Khames (student trustee) (2021)

Lillian Kimbell, Chair (2024)

John "Jack" McGrory (2023)

Anna Ortiz-Morfit (2025)

Krystal Raynes (student trustee) (2022)

Romey Sabalius (faculty trustee) (2021)

Lateefah Simon (2027)

Christopher J. Steinhauser (2026)

Peter J. Taylor (2021)

## CAMPUS PRESIDENTS

(date is the appointment year)

Bakersfield

Lynnette Zelezny (2018)

Channel Islands

Richard Yao (Interim 2020)

Chico

Gayle E. Hutchinson (2016)

Dominguez Hills

Thomas A. Parham (2018)

East Bay

Cathy Sandeen (2020)

Fresno

Saúl Jiménez-Sandoval (Interim 2020)

Fullerton

Framroze Virjee (2019)

Humboldt

Tom Jackson, Jr. (2019)

Long Beach

Jane Close Conoley (2014)

Los Angeles

William A. Covino (2013)

Maritime Academy

Thomas A. Cropper (2012)

Monterey Bay

Eduardo M. Ochoa (2013)

Northridge

Erika D. Beck (2020)

Pomona

Soraya M. Coley (2015)

Sacramento

Robert S. Nelsen (2015)

San Bernardino

Tomás D. Morales (2012)

San Diego

Adela de la Torre (2018)

San Francisco

Lynn Mahoney (2019)

San José

Mary A. Papazian (2016)

San Luis Obispo

Jeffrey D. Armstrong (2011)

San Marcos

Ellen J. Neufeldt (2019)

Sonoma

Judy K. Sakaki (2016)

Stanislaus

Ellen N. Junn (2016)

## ADMINISTRATIVE LEADERS

Joseph I. Castro

Chancellor

Andrew Jones

Executive Vice Chancellor and  
General Counsel

Steve Relyea

Executive Vice Chancellor and  
Chief Financial Officer

Fred E. Wood

Interim Executive Vice Chancellor  
for Academic & Student Affairs

Garrett P. Ashley

Vice Chancellor, University Relations  
and Advancement

Vlad Marinescu

Vice Chancellor and Chief Audit Officer

Evelyn Nazario

Vice Chancellor, Human Resources

Note: Leadership is as of March 2021. For a current list and links to the biographies of trustees, administrative officers and campus presidents, visit [calstate.edu/leadership](https://calstate.edu/leadership)







**Strategic Communications and Public Affairs**  
401 Golden Shore, 4th Floor  
Long Beach, CA 90802-4210

(562) 951-4800  
[publicaffairs@calstate.edu](mailto:publicaffairs@calstate.edu)  
[calstate.edu](http://calstate.edu)

**f** **t** [@calstate](#)

**@** [@theesu](#)

**Published March 2021**