

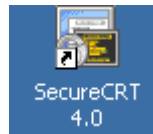
CONTENTS

HOW TO SETUP A CONNECTION.....	1
STEP 1 OPEN SECURECRT.....	1
STEP 2 CREATE A CONNECTION.....	1
STEP 3 ENTER SSH USERNAME/PASSWORD.....	2
STEP 4 CONNECTED TO REMOTE MACHINE.....	3
STEP 5 DISCONNECT FROM REMOTE MACHINE.....	4
HOW TO OPEN A NEW SESSION.....	5
STEP 1 OPEN SECURECRT.....	5
STEP 2 CONNECT TO A SERVER.....	5
CHANGE YOUR ACCOUNT PASSWORD.....	6

How to Setup a Connection

Step 1 Open SecureCRT

You can open SecureCRT from the Start Menu > Program > SecureCRT

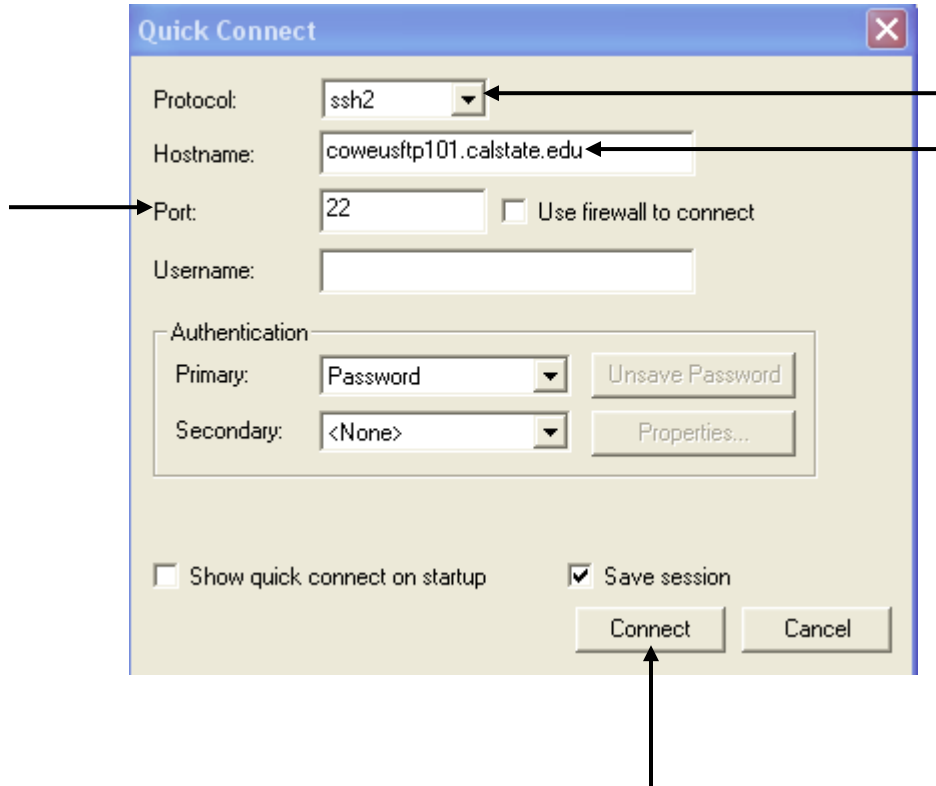
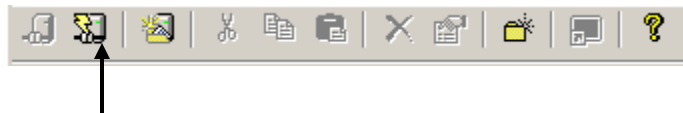


or double click on the SecureCRT icon

Step 2 Create a Connection

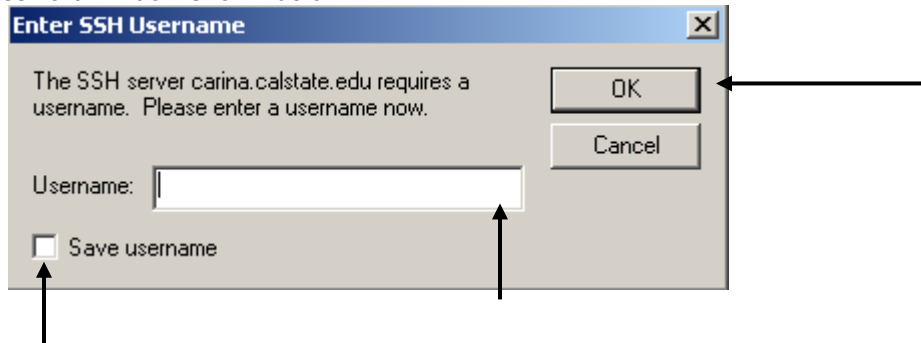
The Quick Connect dialog box will display when you double click on the SecureCRT icon to open the application. To create a connection, enter the values as shown below in the Quick Connect box. Click on the Connect button.

NOTE: If the application is opened from the Start Menu, click on the Quick Connect icon from the Connect window.

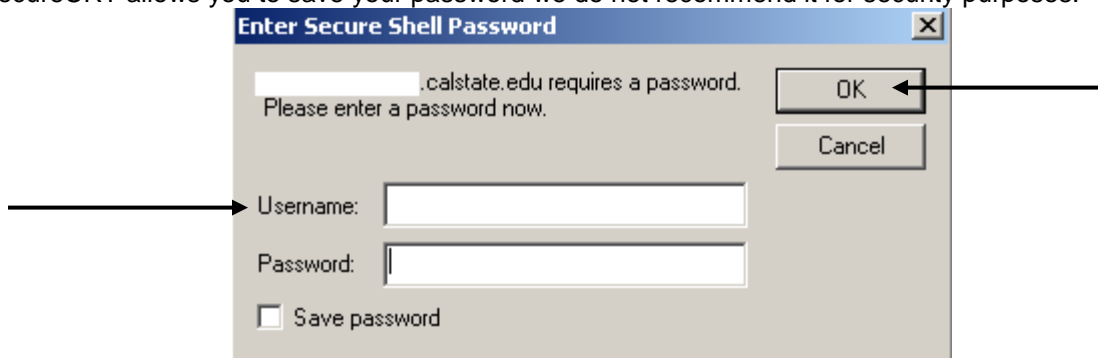


Step 3 Enter SSH Username/Password

The username dialog box will display. Enter your username and click on the OK button. This is your UNIX username. NOTE: SecureCRT allows you can save your username by clicking on the Save username box. By saving your username, you will bypass this window and go directly to the password window shown below.

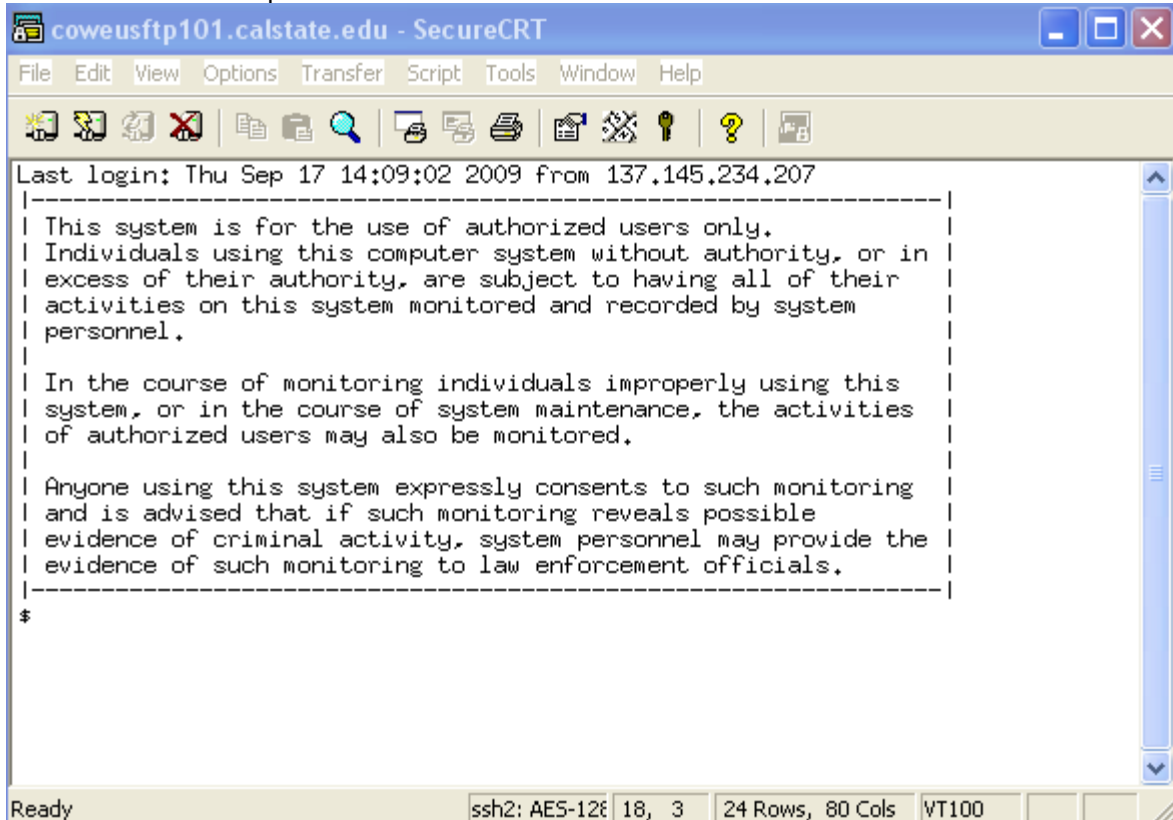


Enter the password associated with your UNIX username. Click on the OK button. Although SecureCRT allows you to save your password we do not recommend it for security purposes.

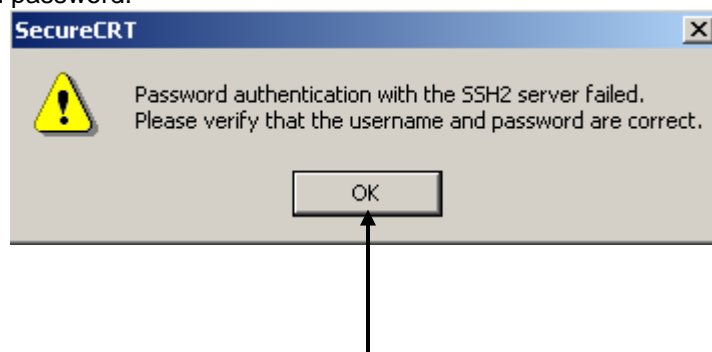


Step 4 Connected to Remote Machine

Your username and password will be validated for access. A successful logon will display your connection to server specified.

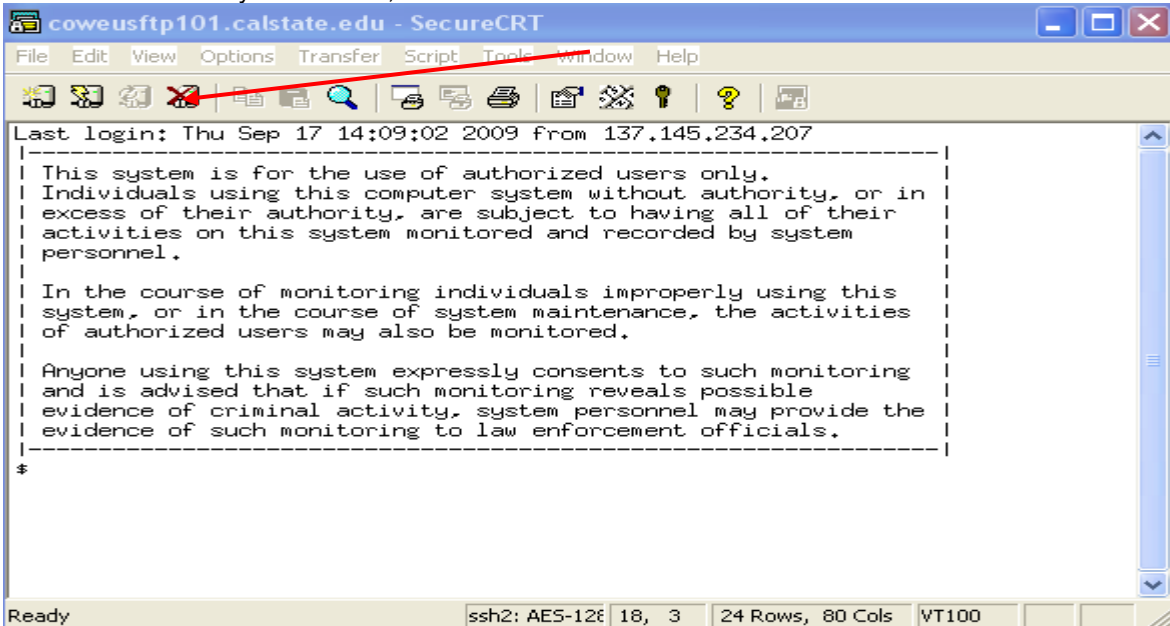


An unsuccessful logon will display a dialog box asking you to verify your username and password. Click on the OK button. The Enter Secure Shell Password dialog box will display for you to reenter your username and password.

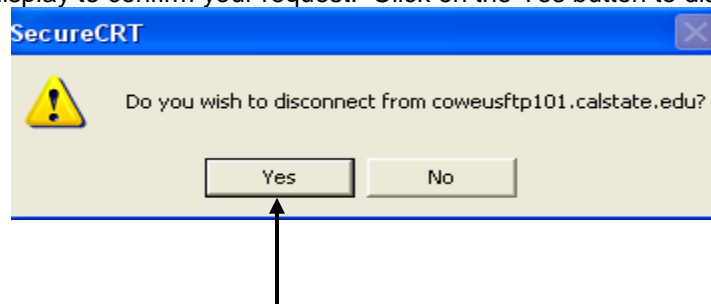


Step 5 Disconnect From Remote Machine

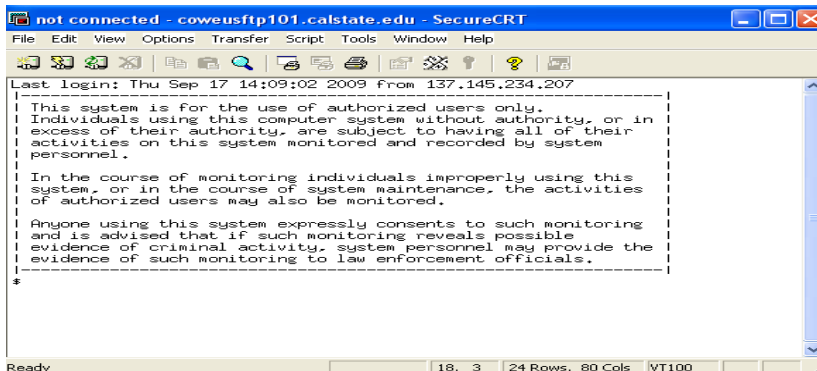
To disconnect from your session, click on the disconnect icon  or exit from a menu selection.



A dialog box will display to confirm your request. Click on the Yes button to disconnect.



Click on the Exit icon to close and exit.

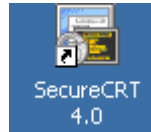


How to Open a New Session

Step 1 Open SecureCRT

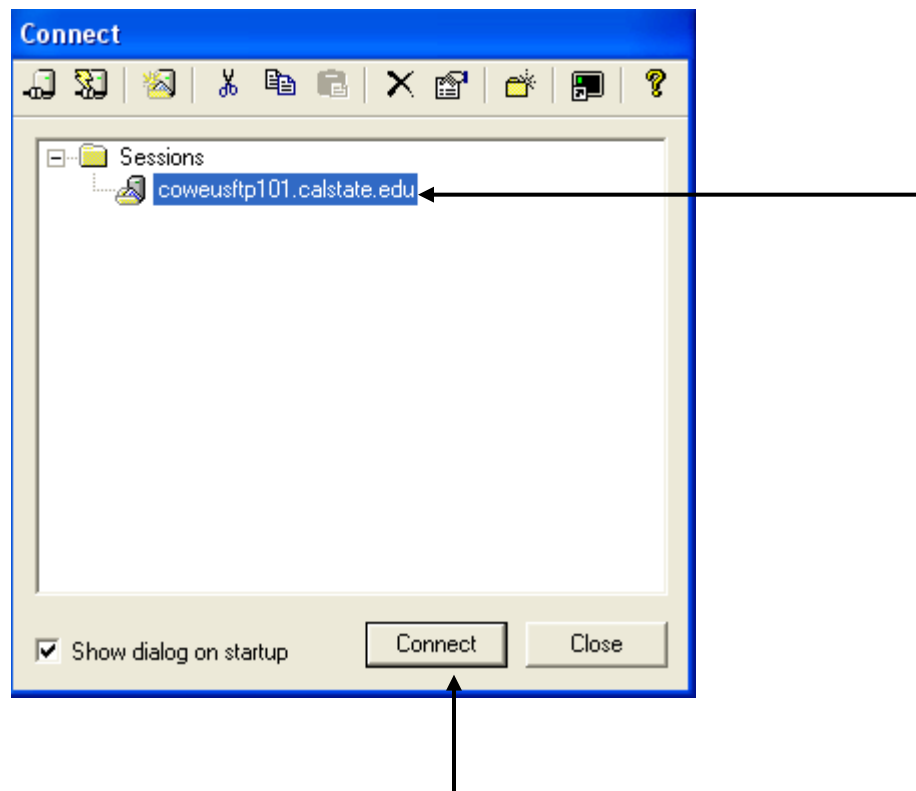
You can open SecureCRT from the Start Menu > Program > SecureCRT

or double click on the SecureCRT icon



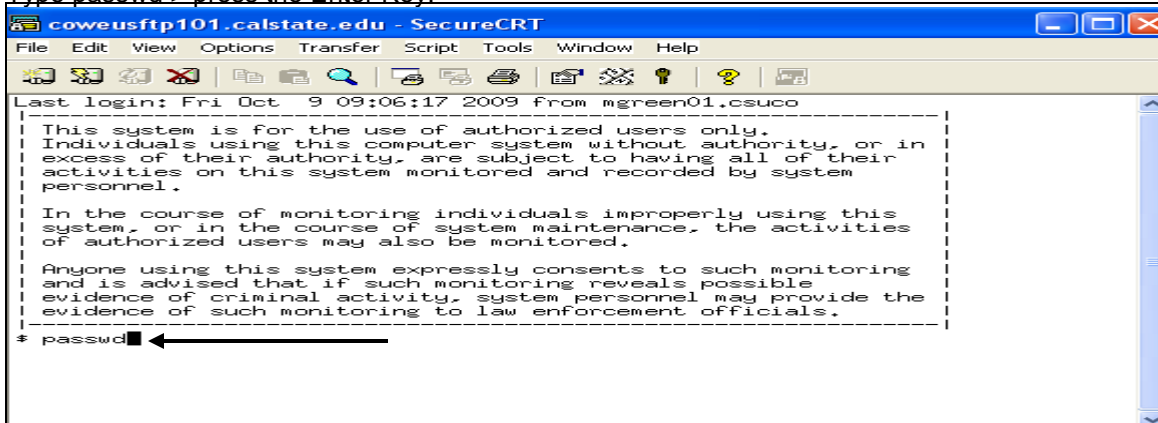
Step 2 Connect to a server

The Connect dialog box allows you to connect to the session defined in your setup. Select the server and click on the Connect button



Change Your Account Password

Step 1 Open SecureCRT and logon to the UNIX account where the password is to be changed. Type `passwd` > press the Enter Key.



Step 2 The following three prompts will display for you to type in the requested information. After each prompt, press the Enter Key.

- Enter existing login password:
- New Password:
- Re-enter new Password:

A message will display when the password has been successfully changed. When prompted, type 'exit' to end the session.

