

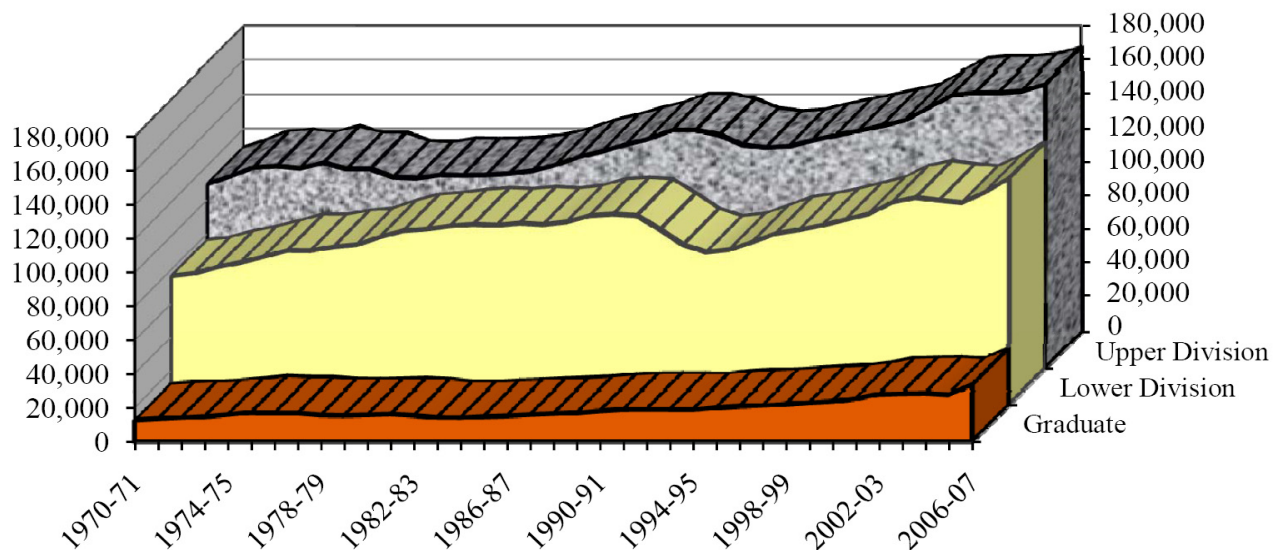
# Introduction

This section presents information on full-time equivalent student (FTES) enrollment in the California State University for the academic year and college year by campus and level of instruction.

Some of the tables report FTES by lower, upper, and graduate division of instruction and by field of study. Here, the focus

is on systemwide totals. A few tables provide information for campuses by discipline division and level of instruction for the academic year. Full-time equivalent faculty (FTEF) information for the academic year, by discipline division and level of instruction, also is displayed for each campus. Finally, comparisons of budgeted and reported student faculty ratios are shown for CSU campuses.

**Figure 24**  
**Academic Year Annual Full-Time Equivalent Students**  
**by Level of Instruction, 1970-1971 to 2006-2007**



**Table 154**  
**Academic Year Full-Time Equivalent Students by Level of Instruction, 2006-2007**  
**By Campus**

Campus	Lower Division	Upper Division	Graduate Division	Total
Bakersfield	2,516.7	3,359.4	677.6	6,553.7
Channel Islands	1,108.0	1,508.8	—	2,616.8
Chico	6,884.5	7,483.6	514.3	14,882.4
Dominguez Hills	2,511.9	4,587.8	1,335.1	8,434.8
East Bay (formerly Hayward)	3,265.1	5,208.6	2,086.8	10,560.5
Fresno	7,591.3	9,367.4	1,439.8	18,398.6
Fullerton	9,879.5	14,839.3	1,868.0	26,586.9
Humboldt	3,189.3	3,274.9	333.2	6,797.3
Long Beach	11,918.7	13,482.5	2,443.5	27,844.7
Los Angeles	5,255.0	8,357.0	1,785.2	15,397.2
Maritime Academy	579.6	412.4	—	992.0
Monterey Bay	1,637.0	1,613.2	268.0	3,518.2
Northridge	10,359.4	12,542.4	3,127.0	26,028.8
Pomona	8,500.0	7,802.9	769.5	17,072.4
Sacramento	8,297.7	11,645.3	2,593.6	22,536.6
San Bernardino	5,607.7	5,416.3	2,202.4	13,226.5
San Diego	11,403.9	13,210.9	3,425.5	28,040.2
San Francisco	7,842.2	12,978.0	2,753.3	23,573.5
San Jose	8,335.7	11,171.0	3,649.4	23,156.1
San Luis Obispo	8,942.7	7,685.9	588.1	17,216.7
San Marcos	2,538.5	4,088.8	290.0	6,917.2
Sonoma	3,296.8	3,681.7	334.0	7,312.4
Stanislaus	2,573.3	3,647.0	504.0	6,724.3
Totals	134,034.3	167,364.9	32,988.3	334,387.6

**Systemwide, from 1964-1965**

Academic Year	Lower Division	Upper Division	Graduate Division	Total
1964-65	55,599	48,548	4,581	108,728
1965-66	56,505	54,280	5,577	116,362
1966-67	59,619	63,471	6,351	129,441
1967-68	63,350	72,507	7,770	143,627
1968-69	68,899	84,489	9,050	162,438
1969-70	73,062	97,851	10,341	181,254
1970-71	76,191	109,042	12,221	197,454
1971-72	77,745	113,492	12,987	204,224
1972-73	81,492	118,803	13,679	213,974
1973-74	84,164	119,553	14,358	218,075
1974-75	87,587	118,284	15,414	221,285
1975-76	91,343	121,484	16,815	229,642
1976-77	91,194	117,856	16,308	225,358
1977-78	93,604	117,835	16,240	227,679
1978-79	94,833	113,017	15,150	223,000
1979-80	99,485	112,362	14,946	226,793
1980-81	103,109	114,358	15,273	232,740
1981-82	104,059	114,138	15,691	233,888
1982-83	105,848	114,319	14,988	235,155
1983-84	106,860	115,124	13,808	235,792
1984-85	106,323	116,841	13,669	236,833
1985-86	107,551	120,333	14,368	242,252
1986-87	106,729	125,063	14,770	246,562
1987-88	108,230	128,293	15,409	251,932
1988-89	112,026	132,257	15,977	260,260
1989-90	112,838	135,617	16,582	265,037
1990-91	112,044	140,641	17,744	270,428
1991-92	103,906	140,617	18,529	263,053
1992-93	94,803	137,795	18,666	251,263
1993-94	90,328	132,065	18,570	240,963
1994-95	91,816	130,360	18,466	240,642
1995-96	96,532	131,164	19,713	247,408
1996-97	101,503	134,637	20,515	256,654
1997-98	103,612	137,423	20,981	262,016
1998-99	106,351	140,208	21,761	268,320
1999-00	109,696	143,061	22,626	275,383
2000-01	113,067	146,360	23,325	282,752
2001-02	119,889	153,779	24,936	298,603
2002-03	122,694	161,070	27,629	311,393
2003-04	120,972	162,451	28,043	311,467
2004-05	119,643	162,435	28,249	310,326
2005-06	125,995	163,496	27,458	316,948
2006-07	134,034	167,365	32,988	334,388

Note: FTES have been rounded to the nearest whole number. Academic Year excludes enrollment for special programs such as Summer Arts, International Programs, Statewide Nursing, and CalStateTEACH. As of 1998-1999, Statewide Nursing is included in Dominguez Hills. Numbers may not add to totals due to rounding. Academic Year data exclude summer quarter.

**Table 155**  
**College Year Full-Time Equivalent Students by Level of Instruction, 2006-2007**  
**By Campus**

Campus	Lower Division	Upper Division	Graduate Division	Total
Bakersfield	2,575.9	3,531.9	697.9	6,805.7
Channel Islands	1,108.0	1,508.8	—	2,616.8
Chico	6,930.9	7,596.6	520.1	15,047.5
Dominguez Hills	2,563.8	4,968.3	1,506.2	9,038.3
East Bay (formerly Hayward)	3,568.2	5,995.9	2,413.9	11,978.1
Fresno	7,591.3	9,367.4	1,439.8	18,398.6
Fullerton	10,227.5	16,025.8	2,081.8	28,335.1
Humboldt	3,281.1	3,404.9	343.9	7,029.9
Long Beach	12,350.6	14,712.1	2,591.9	29,654.6
Los Angeles	5,845.5	9,627.8	1,995.8	17,469.1
Maritime Academy	579.6	412.4	—	992.0
Monterey Bay	1,646.6	1,650.4	280.5	3,577.5
Northridge	10,578.1	13,273.2	3,418.0	27,269.3
Pomona	9,081.1	8,738.8	877.1	18,696.9
Sacramento	8,399.0	12,174.7	2,660.1	23,233.8
San Bernardino	5,930.5	5,971.0	2,373.7	14,275.2
San Diego	11,648.7	14,132.8	3,635.2	29,416.7
San Francisco	8,206.6	13,840.8	2,888.4	24,935.8
San Jose	8,430.8	11,618.3	3,832.5	23,881.5
San Luis Obispo	9,248.5	8,064.7	620.8	17,933.9
San Marcos	2,590.4	4,309.0	310.9	7,210.2
Sonoma	3,296.8	3,681.7	334.0	7,312.4
Stanislaus	2,656.8	3,893.6	532.8	7,083.2
Totals	138,336.3	178,500.8	35,355.1	352,192.2

**Systemwide, from 1964-1965**

College Year	Lower Division	Upper Division	Graduate Division	Total
1964-65	55,599	48,548	4,581	108,728
1965-66	56,662	54,436	5,591	116,689
1966-67	60,219	64,011	6,376	130,606
1967-68	64,579	74,328	7,973	146,880
1968-69	70,417	86,883	9,293	166,593
1969-70	74,954	100,784	10,627	186,365
1970-71	78,556	112,576	12,568	203,700
1971-72	80,568	117,118	13,339	211,025
1972-73	83,975	122,226	14,065	220,266
1973-74	86,490	122,906	14,756	224,152
1974-75	89,791	121,370	15,841	227,002
1975-76	93,839	124,604	17,284	235,727
1976-77	93,659	120,799	16,793	231,251
1977-78	96,157	120,826	16,716	233,699
1978-79	97,417	115,925	15,597	228,939
1979-80	102,047	115,146	15,359	232,552
1980-81	105,858	117,111	15,677	238,646
1981-82	106,839	116,960	16,127	239,926
1982-83	108,447	117,142	15,401	240,990
1983-84	109,530	117,834	14,185	241,549
1984-85	108,852	119,439	14,004	242,295
1985-86	110,734	131,359	15,746	257,839
1986-87	109,270	127,981	15,080	252,331
1987-88	110,734	131,359	15,746	257,839
1988-89	114,580	135,370	16,325	266,275
1989-90	115,459	138,795	16,929	271,183
1990-91	114,949	143,955	18,109	277,012
1991-92	106,460	143,891	18,878	269,229
1992-93	97,124	140,842	19,022	256,988
1993-94	92,213	134,874	18,879	245,966
1994-95	93,560	132,995	18,799	245,353
1995-96	98,222	133,851	20,033	252,106
1996-97	103,166	137,261	20,757	261,184
1997-98	105,349	140,186	21,255	266,790
1998-99	108,231	143,108	22,059	273,397
1999-00	111,746	146,336	23,027	281,109
2000-01	115,358	150,313	23,853	289,523
2001-02	124,367	164,149	26,656	315,173
2002-03	127,498	172,761	29,757	330,016
2003-04	125,544	174,516	30,217	330,276
2004-05	122,001	169,003	29,103	320,106
2005-06	129,891	173,858	29,287	333,037
2006-07	138,336	178,501	35,355	352,192

Note: Data exclude enrollment for special programs such as Summer Arts, International Programs, Statewide Nursing, and CalStateTEACH. As of 1998-1999, Statewide Nursing is included in Dominguez Hills. Numbers may not add to totals due to rounding. College Year data include summer quarter.

Table 156

## Annual Full-Time Equivalent Students and Ratios by Level of Instruction and Level of Student Academic Year, from 1995-1996

Level of Instruction	Level of Student								Total	
	Lower Division		Upper Division		Postbaccalaureate		Graduate			
	Ratio	Number	Ratio	Number	Ratio	Number	Ratio	Number	Ratio	Number
<b>1995-1996</b>										
Lower	.845	53,757	.273	40,984	.082	1,143	.033	649	.390	96,532
Upper	.154	9,813	.721	108,119	.638	8,869	.219	4,363	.530	131,164
Graduate	.001	36	.006	883	.280	3,898	.748	14,895	.080	19,713
Total	(.257)	63,606	(.606)	149,985	(.056)	13,910	(.080)	19,907		247,408
<b>1996-1997</b>										
Lower	.847	58,228	.271	41,240	.089	1,399	.031	636	.395	101,503
Upper	.153	10,502	.723	109,884	.638	9,975	.211	4,276	.525	134,637
Graduate	.001	46	.006	891	.272	4,260	.757	15,318	.080	20,515
Total	(.268)	68,775	(.592)	152,015	(.061)	15,634	(.079)	20,230		256,654
<b>1997-1998</b>										
Lower	.852	60,492	.268	40,987	.089	1,523	.029	610	.395	103,612
Upper	.147	10,425	.726	111,141	.671	11,519	.208	4,338	.524	137,423
Graduate	.001	42	.006	882	.240	4,117	.763	15,940	.080	20,981
Total	(.271)	70,959	(.584)	153,010	(.065)	17,159	(.080)	20,888		262,016
<b>1998-1999</b>										
Lower	.864	63,331	.263	40,809	.088	1,617	.028	594	.396	106,351
Upper	.135	9,899	.731	113,486	.670	12,315	.209	4,508	.523	140,208
Graduate	.000	33	.006	861	.242	4,451	.763	16,416	.081	21,761
Total	(.273)	73,263	(.578)	155,156	(.069)	18,383	(.080)	21,518		268,320
<b>1999-2000</b>										
Lower	.864	66,810	.260	40,654	.084	1,639	.027	593	.398	109,696
Upper	.135	10,433	.734	114,908	.678	13,292	.201	4,428	.519	143,061
Graduate	.001	42	.006	901	.238	4,667	.772	17,016	.082	22,626
Total	(.281)	77,286	(.568)	156,462	(.071)	19,598	(.080)	22,037		275,383
<b>2000-2001</b>										
Lower	.868	70,268	.255	40,534	.083	1,661	.027	604	.400	113,067
Upper	.131	10,625	.740	117,794	.672	13,414	.200	4,527	.518	146,360
Graduate	.001	50	.005	846	.244	4,874	.774	17,554	.082	23,325
Total	(.286)	80,944	(.563)	159,175	(.071)	19,948	(.080)	22,686		282,752
<b>2001-2002</b>										
Lower	.868	75,287	.254	42,151	.084	1,827	.026	624	.401	119,889
Upper	.131	11,381	.741	122,970	.672	14,586	.200	4,842	.515	153,779
Graduate	.000	34.5	.005	881.6	.243	5,280	.774	18,740	.084	24,936
Total	(.290)	86,703	(.556)	166,002	(.073)	21,693	(.081)	24,206		298,603
<b>2002-2003</b>										
Lower	.868	77,160	.250	43,024	.077	1,840	.025	671	.394	122,694
Upper	.131	11,648	.745	128,105	.673	16,021	.198	5,296	.517	161,070
Graduate	.000	39	.005	912	.250	5,945	.777	20,733	.089	27,629
Total	(.285)	88,847	(.552)	172,041	(.076)	23,806	(.086)	26,699		311,393
<b>2003-2004</b>										
Lower	.865	76,627	.243	42,300	.067	1,418	.023	626	.388	120,972
Upper	.135	11,938	.752	130,946	.662	14,094	.200	5,473	.522	162,451
Graduate	.001	48	.006	968	.272	5,793	.777	21,235	.090	28,043
Total	(.285)	88,613	(.559)	174,214	(.068)	21,305	(.088)	27,334		311,467
<b>2004-2005</b>										
Lower	.863	75,312	.238	42,695	.061	1,024	.022	613	.386	119,643
Upper	.133	11,605	.755	135,168	.622	10,351	.194	5,311	.523	162,435
Graduate	.004	311	.007	1,260	.317	5,278	.783	21,399	.091	28,249
Total	(.281)	87,227	(.577)	179,123	(.054)	16,653	(.088)	27,323		310,326
<b>2005-2006</b>										
Lower	.879	80,068	.241	44,256	.072	1,094	.021	576	.398	125,995
Upper	.118	10,760	.754	138,538	.623	9,435	.177	4,763	.516	163,496
Graduate	.003	245	.006	1,045	.304	4,608	.801	21,559	.087	27,458
Total	(.287)	91,072	(.580)	183,839	(.048)	15,137	(.085)	26,899		316,948
<b>2006-2007</b>										
Lower	.885	87,061	.241	45,000	.079	1,158	.024	816	.401	134,034
Upper	.114	11,248	.754	140,870	.644	9,452	.168	5,795	.501	167,365
Graduate	.000	38	.005	997	.277	4,058	.808	27,894	.099	32,988
Total	(.294)	98,347	(.559)	186,867	(.044)	14,669	(.103)	34,505		334,388

Note: Ratios by level of instruction add vertically. Ratios in parentheses add horizontally.

Data exclude enrollment for special programs such as Summer Arts, International Programs, and CalStateTEACH. Data include enrollment in Statewide Nursing as of 1998-1999, but exclude Statewide Nursing prior to that year.

Table 157

Annual Full-Time Equivalent Students and Ratios by Level of Instruction and Level of Student  
Summer Quarter, from 1995-1996

Level of Instruction	Level of Student								Total	
	Lower Division Ratio	Lower Division Number	Upper Division Ratio	Upper Division Number	Postbaccalaureate Ratio	Postbaccalaureate Number	Graduate Ratio	Graduate Number		
<b>1995-1996</b>										
Lower	.827	534	.331	1,086	.138	50	.048	20	.360	1,689
Upper	.172	111	.667	2,190	.710	256	.319	130	.572	2,688
Graduate	.001	0	.002	7	.151	55	.633	259	.068	320
Total	(.137)	645	(.699)	3,283	(.077)	361	(.087)	409		4,697
<b>1996-1997</b>										
Lower	.812	531	.328	1,058	.172	55	.057	19	.367	1,663
Upper	.187	122	.670	2,161	.734	233	.325	108	.579	2,624
Graduate	.001	1	.002	6	.095	30	.618	206	.054	243
Total	(.144)	654	(.712)	3,225	(.070)	317	(.074)	333		4,529
<b>1997-1998</b>										
Lower	.795	543	.334	1,111	.151	61	.061	22	.364	1,737
Upper	.204	139	.664	2,210	.749	302	.310	112	.579	2,763
Graduate	.001	1	.002	6	.099	40	.629	227	.057	274
Total	(.143)	683	(.697)	3,327	(.084)	403	(.076)	361		4,774
<b>1998-1999</b>										
Lower	.823	596	.339	1,194	.146	66	.064	24	.370	1,879
Upper	.177	128	.659	2,324	.730	330	.310	117	.571	2,900
Graduate	.000	0	.002	6	.124	56	.626	236	.059	298
Total	(.143)	724	(.694)	3,524	(.089)	452	(.074)	377		5,077
<b>1999-2000</b>										
Lower	.847	701	.331	1,227	.132	96	.054	25	.358	2,050
Upper	.153	127	.667	2,472	.736	534	.305	142	.572	3,275
Graduate	.001	1	.002	7	.132	96	.639	297	.070	401
Total	(.145)	828	(.647)	3,707	(.127)	726	(.081)	465		5,726
<b>2000-2001</b>										
Lower	.839	837	.302	1,331	.099	84	.075	39	.338	2,290
Upper	.155	155	.694	3,055	.691	587	.301	157	.584	3,953
Graduate	.006	6	.004	17	.211	179	.625	326	.078	528
Total	(.147)	998	(.650)	4,403	(.126)	850	(.077)	522		6,771
<b>2001-2002</b>										
Lower	.833	1,746	.232	2,523	.078	145	.037	64	.270	4,478
Upper	.164	344	.762	8,288	.713	1,333	.235	406	.626	10,371
Graduate	.003	7	.006	68	.210	392	.727	1,254	.104	1,721
Total	(.127)	2,097	(.657)	10,879	(.113)	1,870	(.104)	1,724		16,570
<b>2002-2003</b>										
Lower	.842	1,730	.231	2,820	.080	178	.036	76	.258	4,803
Upper	.156	322	.763	9,304	.704	1,573	.230	492	.628	11,691
Graduate	.002	4	.006	72	.216	483	.734	1,569	.114	2,128
Total	(.110)	2,055	(.655)	12,197	(.120)	2,234	(.115)	2,137		18,623
<b>2003-2004</b>										
Lower	.814	1,619	.221	2,738	.070	160	.025	54	.243	4,572
Upper	.183	365	.773	9,587	.705	1,606	.237	508	.641	12,065
Graduate	.003	6	.006	77	.225	512	.737	1,577	.116	2,173
Total	(.106)	1,990	(.659)	12,402	(.121)	2,278	(.114)	2,139		18,810
<b>2004-2005</b>										
Lower	.681	954	.200	1,310	.082	55	.033	38	.241	2,358
Upper	.310	434	.798	5,223	.703	475	.376	436	.672	6,568
Graduate	.008	12	.002	11	.215	145	.591	686	.087	854
Total	(.143)	1,400	(.669)	6,544	(.069)	676	(.119)	1,160		9,780
<b>2005-2006</b>										
Lower	.815	1,386	.208	2,403	.059	63	.025	44	.242	3,896
Upper	.179	305	.788	9,103	.555	592	.206	363	.644	10,363
Graduate	.006	10	.004	51	.386	411	.769	1,357	.114	1,830
Total	(.106)	1,701	(.718)	11,558	(.066)	1,065	(.110)	1,765		16,089
<b>2006-2007</b>										
Lower	.833	1,530	.207	2,577	.081	84	.044	111	.242	4,302
Upper	.164	302	.788	9,805	.559	583	.180	446	.625	11,136
Graduate	.003	6	.005	57	.360	376	.776	1,928	.133	2,367
Total	(.103)	1,838	(.699)	12,439	(.059)	1,043	(.140)	2,485		17,805

Note: Ratios by level of instruction add vertically. Ratios in parentheses add horizontally. Data exclude enrollment for special programs such as Summer Arts, International Programs, and CalStateTEACH. Data include enrollment in Statewide Nursing as of 1998-1999, but exclude Statewide Nursing prior to that year.

**Table 158**  
**Full-Time Equivalent Students, by Course Discipline**  
**Systemwide, Academic Year**

Discipline Category	FTES	Level			Discipline % of Total	Discipline Category	FTES	Level			Discipline % of Total
		LD%	UD%	GD%				LD%	UD%	GD%	
<b>Agriculture and Natural Resources</b>						<b>Biological Sciences</b>					
1986-87	2,850	43.2	53.5	3.3	1.16	1986-87	9,480	58.6	38.9	2.5	3.85
1987-88	2,893	44.7	51.9	3.4	1.12	1987-88	9,833	59.4	38.1	2.5	3.81
1988-89	2,952	45.1	51.2	3.7	1.13	1988-89	9,960	59.0	38.6	2.4	3.83
1989-90	2,899	46.1	50.4	3.4	1.09	1989-90	10,024	59.2	38.2	2.6	3.85
1990-91	2,875	45.4	50.5	4.1	1.06	1990-91	10,585	58.8	38.7	2.5	3.90
1991-92	2,992	42.7	53.4	3.9	1.13	1991-92	10,345	57.9	39.1	3.0	3.92
1992-93	3,025	39.7	57.2	3.1	1.20	1992-93	10,100	56.2	41.0	2.8	4.00
1993-94	2,973	39.2	57.7	3.1	1.23	1993-94	10,166	55.0	42.1	2.9	4.20
1994-95	3,109	40.2	57.2	2.6	1.29	1994-95	10,496	54.4	42.7	3.0	4.35
1995-96	3,269	39.8	57.3	2.9	1.32	1995-96	10,708	53.7	43.3	3.0	4.31
1996-97	3,390	39.7	57.9	2.4	1.32	1996-97	10,667	53.2	43.8	3.0	4.15
1997-98	3,513	38.5	59.1	2.4	1.34	1997-98	10,352	53.9	42.8	3.3	3.95
1998-99	3,524	37.0	60.7	2.4	1.31	1998-99	10,038	53.8	42.6	3.5	3.74
1999-00	3,499	37.1	60.4	2.5	1.27	1999-00	9,802	54.7	41.7	3.6	3.56
2000-01	3,490	37.3	59.9	2.8	1.23	2000-01	9,800	55.3	40.8	3.9	3.47
2001-02	3,461	37.1	60.1	2.9	1.20	2001-02	10,227	56.8	39.4	3.8	3.40
2002-03	3,308	38.8	57.9	3.4	1.10	2002-03	10,868	57.7	38.3	3.9	3.50
2003-04	3,416	37.6	59.2	3.3	1.10	2003-04	11,222	58.2	37.8	4.0	3.60
2004-05	3,427	36.7	60.2	3.1	1.10	2004-05	11,443	59.0	37.2	3.8	3.70
2005-06	3,578	38.8	58.4	2.8	1.10	2005-06	12,195	58.1	37.9	4.0	3.80
2006-07	3,627	38.8	58.3	3.0	1.10	2006-07	13,068	57.5	37.7	4.7	3.90
<b>Architecture and Environmental Design</b>						<b>Business and Management</b>					
1986-87	1,476	35.1	52.8	12.0	0.60	1986-87	31,980	20.3	73.3	6.4	12.99
1987-88	1,595	35.2	54.3	10.5	0.62	1987-88	33,039	19.2	74.3	6.5	12.81
1988-89	1,916	31.7	59.6	8.7	0.74	1988-89	32,760	19.2	74.2	6.6	12.59
1989-90	1,919	33.5	58.6	7.8	0.72	1989-90	32,602	18.8	74.3	6.9	12.30
1990-91	1,902	30.1	61.2	8.7	0.70	1990-91	32,714	17.4	75.1	7.5	12.05
1991-92	1,888	28.8	62.1	9.1	0.72	1991-92	31,488	15.8	75.7	8.5	11.92
1992-93	1,712	27.1	62.7	10.2	0.68	1992-93	29,820	14.0	78.1	7.9	11.82
1993-94	1,587	26.2	61.7	12.1	0.66	1993-94	28,115	14.8	77.8	7.4	11.63
1994-95	1,570	26.1	62.8	11.0	0.65	1994-95	27,246	15.4	77.1	7.5	11.28
1995-96	1,458	28.0	59.7	12.3	0.59	1995-96	27,295	16.4	75.9	7.7	11.00
1996-97	1,458	30.4	56.4	13.2	0.57	1996-97	27,962	17.9	74.1	8.0	10.88
1997-98	1,430	29.8	57.6	12.6	0.55	1997-98	28,290	17.8	73.8	8.3	10.79
1998-99	1,397	29.2	60.2	10.6	0.52	1998-99	29,161	17.2	74.8	8.0	10.87
1999-00	1,421	31.8	58.3	9.9	0.52	1999-00	30,166	17.5	74.8	7.8	10.95
2000-01	1,483	31.9	58.3	9.8	0.52	2000-01	30,104	18.0	74.4	7.6	10.65
2001-02	1,605	38.1	52.1	9.7	0.50	2001-02	32,092	17.9	74.6	7.5	10.70
2002-03	1,676	36.3	53.5	10.3	0.50	2002-03	33,231	16.8	75.4	7.8	10.70
2003-04	1,802	33.4	56.0	10.5	0.60	2003-04	32,592	16.1	76.5	7.4	10.50
2004-05	1,799	33.5	55.6	11.0	0.60	2004-05	32,792	16.0	77.2	6.8	10.60
2005-06	1,922	33.6	55.7	10.7	0.60	2005-06	33,947	16.5	77.2	6.3	10.70
2006-07	1,966	36.6	49.9	13.5	0.60	2006-07	35,366	16.5	76.1	7.4	10.60
<b>Area Studies</b>						<b>Communications</b>					
1986-87	761	60.9	38.5	0.7	0.31	1986-87	6,857	31.5	66.8	1.7	2.79
1987-88	796	60.1	38.8	1.1	0.31	1987-88	6,921	30.8	67.3	1.9	2.68
1988-89	791	56.8	42.1	1.1	0.30	1988-89	7,130	31.7	66.6	1.7	2.74
1989-90	816	54.5	44.5	1.0	0.31	1989-90	7,432	31.7	66.7	1.6	2.80
1990-91	832	53.5	45.1	1.5	0.31	1990-91	7,479	30.9	67.2	1.8	2.76
1991-92	818	50.9	46.0	3.1	0.31	1991-92	7,355	28.8	68.4	2.9	2.79
1992-93	770	53.1	44.4	2.6	0.31	1992-93	6,903	27.6	70.4	2.0	2.74
1993-94	630	43.6	54.3	2.1	0.26	1993-94	6,170	27.0	70.8	2.3	2.55
1994-95	619	39.3	58.3	2.4	0.26	1994-95	6,043	29.9	67.5	2.5	2.50
1995-96	653	38.3	59.0	2.6	0.26	1995-96	6,112	33.3	64.2	2.5	2.46
1996-97	654	41.9	55.5	2.6	0.25	1996-97	6,727	36.1	61.0	2.8	2.62
1997-98	680	40.7	56.6	2.7	0.26	1997-98	6,934	35.4	61.8	2.8	2.64
1998-99	683	38.1	59.4	2.5	0.25	1998-99	7,205	34.8	62.6	2.7	2.68
1999-00	700	37.3	59.4	3.3	0.25	1999-00	7,341	35.6	61.7	2.6	2.67
2000-01	776	38.0	59.5	2.4	0.27	2000-01	8,228	35.5	62.2	2.3	2.91
2001-02	865	37.6	60.0	2.4	0.30	2001-02	8,793	35.9	61.7	2.4	2.90
2002-03	944	37.2	60.9	1.9	0.30	2002-03	8,824	34.9	62.5	2.7	2.80
2003-04	980	39.2	58.8	2.0	0.30	2003-04	9,117	33.6	63.7	2.7	2.90
2004-05	1,057	39.7	58.1	2.2	0.30	2004-05	10,226	34.6	62.8	2.5	3.30
2005-06	1,092	40.7	57.2	2.1	0.30	2005-06	10,689	35.6	62.1	2.3	3.40
2006-07	1,159	40.9	56.9	2.2	0.30	2006-07	11,684	36.6	61.1	2.3	3.50

Note: Table does not include Summer Arts, International Programs, or CalStateTEACH. As of 1998-1999, data include Statewide Nursing. Totals may differ from other tables due to rounding. Source: Academic Planning Database (APDB).

**Table 158 (continued)**  
**Full-Time Equivalent Students, by Course Discipline**  
**Systemwide, Academic Year**

Discipline Category	FTES	Level			Discipline % of Total	Discipline Category	FTES	Level			Discipline % of Total
		LD%	UD%	GD%				LD%	UD%	GD%	
<b>Computer and Information Sciences</b>						<b>Fine and Applied Arts</b>					
1986-87	6,360	44.9	49.9	5.2	2.58	1986-87	16,563	49.5	47.3	3.2	6.73
1987-88	6,768	46.2	48.4	5.4	2.63	1987-88	17,487	49.2	47.7	3.1	6.78
1988-89	6,562	47.3	46.8	5.9	2.52	1988-89	17,875	49.5	47.6	2.9	6.87
1989-90	6,758	45.9	47.8	6.3	2.54	1989-90	17,994	48.4	48.6	3.1	6.79
1990-91	7,207	43.7	49.4	6.9	2.66	1990-91	18,243	47.4	49.4	3.2	6.72
1991-92	6,866	41.8	49.3	8.9	2.60	1991-92	17,485	46.2	49.6	4.2	6.62
1992-93	6,651	39.4	52.5	8.1	2.64	1992-93	16,210	43.0	53.5	3.4	6.43
1993-94	6,472	39.2	53.1	7.7	2.68	1993-94	15,407	42.0	54.2	3.7	6.37
1994-95	6,519	41.2	52.2	6.6	2.70	1994-95	15,405	42.4	54.0	3.6	6.38
1995-96	6,871	44.1	49.4	6.6	2.77	1995-96	16,114	43.4	53.0	3.6	6.49
1996-97	7,358	46.5	47.5	5.9	2.86	1996-97	16,893	43.9	52.6	3.5	6.57
1997-98	8,120	45.8	48.2	6.1	3.10	1997-98	17,049	42.8	53.5	3.7	6.50
1998-99	8,991	45.0	48.2	6.8	3.35	1998-99	17,266	42.0	54.4	3.6	6.43
1999-00	9,824	42.1	50.7	7.2	3.57	1999-00	18,137	43.6	53.1	3.3	6.59
2000-01	10,950	38.2	54.9	6.9	3.87	2000-01	19,050	44.2	52.6	3.2	6.74
2001-02	10,832	37.6	55.1	7.2	3.60	2001-02	20,170	45.0	51.9	3.1	6.80
2002-03	10,197	34.8	56.8	8.4	3.30	2002-03	20,852	44.6	52.3	3.1	6.70
2003-04	9,313	33.8	57.1	9.0	3.00	2003-04	20,993	43.7	53.1	3.2	6.70
2004-05	7,663	35.3	56.0	8.7	2.50	2004-05	21,032	44.4	52.5	3.1	6.80
2005-06	7,021	36.9	54.4	8.7	2.20	2005-06	21,503	45.4	51.7	3.0	6.80
2006-07	7,202	37.1	52.2	10.7	2.20	2006-07	22,251	46.6	50.0	3.4	6.70
<b>Education</b>						<b>Foreign Languages</b>					
1986-87	15,916	5.5	64.6	29.9	6.47	1986-87	6,345	77.1	21.6	1.4	2.58
1987-88	17,009	5.6	64.0	30.4	6.60	1987-88	6,419	76.3	22.3	1.4	2.49
1988-89	17,222	6.1	63.2	30.8	6.62	1988-89	6,554	76.3	22.2	1.4	2.52
1989-90	17,438	6.1	63.1	30.8	6.60	1989-90	6,591	74.6	23.9	1.6	2.49
1990-91	18,764	5.7	64.0	30.0	6.91	1990-91	6,907	72.8	25.5	1.7	2.54
1991-92	18,069	5.4	60.3	34.2	6.84	1991-92	6,470	70.3	27.4	2.3	2.45
1992-93	17,366	4.6	60.9	34.6	6.88	1992-93	6,037	66.9	31.3	1.8	2.39
1993-94	16,727	4.9	57.4	37.6	6.92	1993-94	5,924	67.6	30.3	2.1	2.45
1994-95	16,833	5.3	56.1	38.6	6.97	1994-95	6,210	68.8	29.1	2.1	2.57
1995-96	18,188	5.6	55.9	38.5	7.33	1995-96	6,535	69.7	28.2	2.1	2.63
1996-97	19,569	5.4	56.6	38.0	7.61	1996-97	6,963	69.4	28.6	2.0	2.71
1997-98	21,322	5.0	57.6	37.4	8.13	1997-98	7,035	68.2	29.6	2.2	2.68
1998-99	22,835	4.9	57.5	37.6	8.51	1998-99	6,746	67.6	30.1	2.4	2.51
1999-00	24,769	5.0	56.7	38.3	8.99	1999-00	6,625	67.6	30.0	2.4	2.41
2000-01	25,713	4.5	57.3	38.2	9.09	2000-01	6,545	68.6	28.9	2.5	2.31
2001-02	27,775	4.8	56.9	38.4	9.30	2001-02	6,908	69.3	28.2	2.5	2.30
2002-03	30,614	4.2	57.2	38.6	9.80	2002-03	7,135	68.4	29.0	2.6	2.30
2003-04	29,718	4.2	55.7	40.1	9.50	2003-04	7,302	67.9	29.3	2.7	2.30
2004-05	26,944	4.9	52.4	42.8	8.70	2004-05	7,035	66.7	30.6	2.8	2.30
2005-06	25,541	5.5	51.0	43.5	8.10	2005-06	7,216	66.3	30.7	2.0	2.30
2006-07	26,905	6.1	48.3	45.6	8.00	2006-07	7,578	67.4	29.4	3.2	2.30
<b>Engineering</b>						<b>Health Professions</b>					
1986-87	13,307	25.6	67.9	6.5	5.41	1986-87	4,063	9.9	73.7	16.4	1.65
1987-88	13,274	25.2	68.4	6.4	5.15	1987-88	4,332	9.9	73.1	17.0	1.68
1988-89	12,586	24.3	68.8	6.9	4.84	1988-89	4,157	11.2	72.1	16.7	1.60
1989-90	12,714	25.3	67.0	7.6	4.80	1989-90	4,266	12.1	71.2	16.7	1.61
1990-91	12,512	24.9	67.0	8.2	4.61	1990-91	4,497	11.8	70.9	17.2	1.66
1991-92	12,528	24.1	66.6	9.4	4.74	1991-92	4,597	11.4	69.7	18.8	1.74
1992-93	11,841	23.1	68.3	8.5	4.69	1992-93	4,731	11.0	70.1	18.9	1.88
1993-94	11,108	23.2	68.6	8.2	4.59	1993-94	4,659	10.4	69.1	20.4	1.93
1994-95	10,537	22.4	69.2	8.4	4.36	1994-95	4,726	10.4	69.7	20.0	1.96
1995-96	10,052	22.6	68.6	8.7	4.05	1995-96	5,179	12.0	68.4	19.6	2.09
1996-97	9,794	24.0	67.3	8.7	3.81	1996-97	5,320	12.2	68.6	19.2	2.07
1997-98	9,427	24.3	67.2	8.6	3.59	1997-98	5,265	11.8	68.5	19.7	2.01
1998-99	9,536	25.7	65.7	8.6	3.55	1998-99	5,164	13.5	65.7	20.8	1.92
1999-00	9,614	27.4	63.7	9.0	3.49	1999-00	5,070	15.8	62.9	21.3	1.84
2000-01	10,089	28.9	62.6	8.5	3.57	2000-01	5,212	15.6	62.5	21.9	1.84
2001-02	11,121	29.2	61.5	9.3	3.70	2001-02	5,167	16.2	61.0	22.8	1.70
2002-03	11,977	28.9	59.4	11.6	3.80	2002-03	5,606	16.4	60.5	23.1	1.80
2003-04	12,108	28.2	60.8	11.0	3.90	2003-04	5,756	16.3	60.2	23.5	1.80
2004-05	12,680	27.3	61.2	11.5	4.10	2004-05	5,764	17.0	58.4	24.6	1.90
2005-06	12,892	28.0	60.0	11.9	4.10	2005-06	6,015	16.9	58.9	24.2	1.90
2006-07	13,812	27.0	57.4	15.6	4.10	2006-07	7,051	16.0	58.0	26.1	2.10

Note: Table does not include Summer Arts, International Programs, or CalStateTEACH. As of 1998-1999, data include Statewide Nursing. Totals may differ from other tables due to rounding. Source: Academic Planning Database (APDB).

**Table 158 (continued)**  
**Full-Time Equivalent Students, by Course Discipline**  
**Systemwide, Academic Year**

Discipline Category	FTES	Level			Discipline % of Total	Discipline Category	FTES	Level			Discipline % of Total
		LD%	UD%	GD%				LD%	UD%	GD%	
<b>Home Economics</b>						<b>Letters</b>					
1986-87	3,688	38.3	58.7	3.0	1.50	1986-87	27,122	57.2	39.9	2.9	11.02
1987-88	3,731	36.6	60.7	2.7	1.45	1987-88	29,267	56.2	41.3	2.5	11.35
1988-89	3,814	36.7	60.9	2.4	1.47	1988-89	30,074	56.3	41.1	2.6	11.55
1989-90	4,136	37.1	60.5	2.4	1.56	1989-90	30,555	54.1	43.0	2.9	11.53
1990-91	4,144	36.7	60.6	2.7	1.53	1990-91	31,006	53.0	43.8	3.2	11.42
1991-92	4,054	34.5	58.9	6.6	1.54	1991-92	29,178	49.5	46.1	4.4	11.05
1992-93	3,403	30.8	65.5	3.7	1.35	1992-93	28,581	48.9	47.3	3.8	11.33
1993-94	3,047	31.2	64.9	3.9	1.26	1993-94	27,363	48.5	47.7	3.8	11.31
1994-95	2,941	31.8	64.1	4.1	1.22	1994-95	27,642	50.0	46.2	3.8	11.44
1995-96	3,011	31.0	64.6	4.4	1.21	1995-96	28,218	50.7	45.3	3.9	11.37
1996-97	3,206	29.4	66.4	4.2	1.25	1996-97	28,864	51.0	45.2	3.9	11.23
1997-98	3,201	29.6	66.0	4.5	1.22	1997-98	29,274	51.7	44.5	3.8	11.16
1998-99	3,332	30.0	65.7	4.2	1.24	1998-99	30,388	52.8	43.6	3.6	11.32
1999-00	3,448	30.6	65.0	4.3	1.25	1999-00	30,979	53.3	43.2	3.5	11.25
2000-01	3,292	31.0	64.9	4.1	1.16	2000-01	31,563	54.0	42.7	3.3	11.16
2001-02	3,385	30.7	65.1	4.2	1.10	2001-02	32,881	54.1	42.7	3.3	11.00
2002-03	3,280	30.9	64.5	4.6	1.10	2002-03	34,575	53.1	43.4	3.5	11.10
2003-04	3,241	33.0	62.4	4.7	1.00	2003-04	34,704	52.1	44.2	3.7	11.10
2004-05	3,227	31.6	63.3	5.1	1.00	2004-05	34,160	52.3	43.8	4.0	11.00
2005-06	3,519	32.5	62.3	5.2	1.10	2005-06	34,877	53.3	42.9	3.8	11.00
2006-07	3,748	31.4	62.1	6.5	1.10	2006-07	36,366	54.3	41.4	4.3	10.90
<b>Industrial Education</b>						<b>Library Science</b>					
1986-87	2,224	28.4	69.5	2.2	0.90	1986-87	160	8.8	32.6	58.5	0.07
1987-88	2,415	30.7	67.5	1.8	0.94	1987-88	158	13.7	16.0	70.3	0.06
1988-89	2,091	30.9	67.2	2.0	0.80	1988-89	170	8.6	18.5	72.8	0.07
1989-90	1,997	28.6	69.1	2.3	0.75	1989-90	161	4.3	9.4	86.3	0.06
1990-91	1,947	28.3	69.0	2.7	0.72	1990-91	179	6.7	9.8	83.5	0.07
1991-92	1,844	27.0	67.1	5.9	0.70	1991-92	190	4.8	10.2	85.0	0.07
1992-93	1,703	20.8	75.5	3.7	0.68	1992-93	184	9.0	1.8	89.2	0.07
1993-94	1,445	22.2	74.3	3.5	0.60	1993-94	177	5.9	3.3	90.7	0.07
1994-95	1,300	23.6	72.5	4.0	0.54	1994-95	174	8.3	1.8	90.2	0.07
1995-96	1,239	24.2	71.6	4.2	0.50	1995-96	165	14.4	5.0	80.4	0.07
1996-97	1,235	23.8	72.6	3.6	0.48	1996-97	152	14.3	4.2	81.4	0.06
1997-98	1,238	23.6	72.4	4.0	0.47	1997-98	171	13.5	5.3	81.5	0.07
1998-99	1,231	22.5	73.4	4.1	0.46	1998-99	179	13.0	6.6	80.4	0.07
1999-00	1,241	23.3	72.5	4.3	0.45	1999-00	181	16.0	2.9	81.3	0.07
2000-01	1,203	23.7	71.7	4.6	0.43	2000-01	181	8.8	4.4	86.7	0.06
2001-02	1,247	19.7	74.3	5.9	0.40	2001-02	198	6.1	2.5	91.4	0.10
2002-03	1,266	18.4	74.6	7.0	0.40	2002-03	237	5.5	1.7	92.8	0.10
2003-04	1,274	19.5	71.7	8.8	0.40	2003-04	248	4.0	13.7	82.3	0.10
2004-05	1,200	21.2	71.4	7.4	0.40	2004-05	310	10.3	9.4	80.3	0.10
2005-06	1,206	21.3	72.5	6.2	0.40	2005-06	300	9.3	0.0	90.7	0.10
2006-07	1,206	19.4	72.6	8.0	0.40	2006-07	470	7.9	0.0	92.1	0.10
<b>Interdisciplinary Studies</b>						<b>Mathematics</b>					
1986-87	3,760	44.1	54.6	1.2	1.53	1986-87	13,505	75.6	22.1	2.3	5.49
1987-88	4,140	43.8	54.8	1.5	1.61	1987-88	14,002	77.5	21.0	1.5	5.43
1988-89	4,261	44.2	54.5	1.3	1.64	1988-89	13,568	78.8	19.9	1.3	5.21
1989-90	4,384	42.2	56.3	1.5	1.65	1989-90	13,365	80.1	18.8	1.1	5.04
1990-91	4,857	41.0	57.3	1.7	1.79	1990-91	12,890	82.1	16.8	1.1	4.75
1991-92	4,807	40.3	57.5	2.1	1.82	1991-92	12,321	81.2	17.3	1.4	4.67
1992-93	4,745	37.7	59.9	2.4	1.88	1992-93	11,695	81.1	17.7	1.2	4.64
1993-94	4,973	37.2	60.7	2.1	2.06	1993-94	11,308	81.0	17.8	1.2	4.68
1994-95	5,255	34.7	63.1	2.3	2.18	1994-95	11,770	81.4	17.3	1.3	4.87
1995-96	5,595	37.4	60.3	2.3	2.25	1995-96	12,508	83.0	15.8	1.2	5.04
1996-97	6,076	39.5	58.1	2.4	2.36	1996-97	13,402	83.8	15.1	1.1	5.21
1997-98	6,183	40.9	56.7	2.4	2.36	1997-98	14,587	84.6	14.3	1.1	5.56
1998-99	6,891	43.0	54.8	2.2	2.57	1998-99	16,383	85.6	13.5	0.9	6.10
1999-00	7,197	43.0	54.8	2.3	2.61	1999-00	17,123	84.8	14.3	1.0	6.22
2000-01	7,626	44.6	53.5	1.9	2.70	2000-01	17,617	83.9	15.1	1.0	6.23
2001-02	8,035	45.3	52.8	1.9	2.70	2001-02	18,659	82.9	16.0	1.1	6.20
2002-03	8,480	46.4	51.7	1.9	2.70	2002-03	18,493	80.9	17.8	1.3	5.90
2003-04	8,671	44.7	53.4	2.0	2.80	2003-04	17,713	80.3	18.1	1.6	5.70
2004-05	8,754	42.5	55.1	2.4	2.80	2004-05	17,034	80.2	17.4	2.4	5.50
2005-06	8,766	45.2	52.6	2.3	2.80	2005-06	17,641	81.9	16.1	2.1	5.60
2006-07	8,982	46.4	51.1	2.6	2.70	2006-07	18,605	83.1	14.7	2.2	5.60

Note: Table does not include Summer Arts, International Programs, or CalStateTEACH. As of 1998-1999, data include Statewide Nursing. Totals may differ from other tables due to rounding. Source: Academic Planning Database (APDB).

**Table 158 (continued)**  
**Full-Time Equivalent Students, by Course Discipline**  
**Systemwide, Academic Year**

Discipline Category	FTES	Level			Discipline % of Total	Discipline Category	FTES	Level			Discipline % of Total
		LD%	UD%	GD%				LD%	UD%	GD%	
<b>Military Science</b>						<b>Physical Sciences</b>					
1986-87	193	34.2	65.8	0.0	0.08	1986-87	13,228	74.8	23.4	1.8	5.37
1987-88	192	35.5	64.5	0.0	0.07	1987-88	13,382	74.4	23.7	2.0	5.19
1988-89	191	34.7	65.3	0.0	0.07	1988-89	13,259	74.6	23.5	2.0	5.09
1989-90	180	36.1	63.9	0.0	0.07	1989-90	13,773	75.2	22.9	1.9	5.20
1990-91	131	43.7	56.3	0.0	0.05	1990-91	12,890	82.1	16.8	1.1	4.75
1991-92	115	46.6	53.4	0.0	0.04	1991-92	13,745	73.5	24.5	2.0	5.21
1992-93	117	41.7	58.3	0.0	0.05	1992-93	12,996	71.9	26.4	1.7	5.15
1993-94	121	40.5	59.5	0.0	0.05	1993-94	12,691	71.5	26.7	1.8	5.25
1994-95	136	39.7	60.2	0.0	0.06	1994-95	12,543	69.8	28.4	1.8	5.19
1995-96	144	41.9	58.0	0.0	0.06	1995-96	12,716	69.1	29.2	1.7	5.12
1996-97	127	46.9	52.7	0.0	0.05	1996-97	12,909	68.9	29.4	1.7	5.02
1997-98	131	50.5	49.2	0.2	0.05	1997-98	12,824	68.8	29.6	1.6	4.89
1998-99	150	55.1	44.8	0.0	0.06	1998-99	12,606	69.2	29.3	1.5	4.70
1999-00	157	48.2	52.1	0.0	0.06	1999-00	12,518	70.9	27.6	1.5	4.55
2000-01	143	46.2	53.8	0.0	0.05	2000-01	12,503	70.0	28.4	1.6	4.42
2001-02	142	47.9	52.1	0.0	0.05	2001-02	13,328	70.0	28.5	1.5	4.50
2002-03	159	50.3	49.7	0.0	0.10	2002-03	14,260	69.6	28.7	1.7	4.60
2003-04	143	50.3	49.7	0.0	0.00	2003-04	14,517	69.3	28.9	1.8	4.70
2004-05	116	41.4	58.6	0.0	0.00	2004-05	14,883	69.5	28.7	1.8	4.80
2005-06	113	48.7	51.3	0.0	0.00	2005-06	15,427	69.1	29.1	1.8	4.90
2006-07	136	47.8	52.2	0.0	0.00	2006-07	16,505	70.0	27.7	2.2	4.90
<b>Nursing</b>						<b>Psychology</b>					
1986-87	2,415	17.1	74.2	8.7	0.98	1986-87	10,057	32.9	60.2	6.9	4.09
1987-88	2,425	18.2	72.0	9.9	0.94	1987-88	11,028	32.5	61.1	6.4	4.28
1988-89	2,354	21.1	69.1	9.8	0.90	1988-89	11,533	32.0	61.4	6.6	4.43
1989-90	3,186	14.5	75.5	10.0	1.20	1989-90	11,830	31.0	62.6	6.4	4.46
1990-91	3,434	14.7	74.8	10.6	1.27	1990-91	12,496	29.4	64.0	6.5	4.60
1991-92	3,495	14.1	72.5	13.5	1.32	1991-92	12,187	28.1	63.2	8.1	4.61
1992-93	3,346	14.2	73.2	12.6	1.33	1992-93	12,071	26.3	66.6	7.1	4.79
1993-94	3,130	14.9	72.7	12.4	1.29	1993-94	11,898	25.1	67.9	7.0	4.92
1994-95	3,259	14.0	72.1	13.9	1.35	1994-95	11,876	25.5	67.6	6.9	4.92
1995-96	3,245	15.7	69.2	15.1	1.31	1995-96	11,952	27.2	66.1	6.7	4.81
1996-97	3,338	15.3	67.9	16.8	1.30	1996-97	12,173	28.4	64.7	6.9	4.74
1997-98	3,244	15.6	66.6	17.8	1.24	1997-98	12,060	28.9	64.6	6.5	4.60
1998-99	3,080	16.2	65.9	17.8	1.15	1998-99	12,145	30.1	63.9	6.0	4.53
1999-00	3,077	16.1	64.8	19.1	1.12	1999-00	12,155	30.0	64.3	5.7	4.41
2000-01	3,117	18.2	64.0	17.8	1.10	2000-01	12,366	29.4	64.5	6.1	4.37
2001-02	3,389	18.9	64.6	16.6	1.10	2001-02	13,012	29.6	64.8	5.6	4.40
2002-03	3,713	20.3	63.7	16.0	1.20	2002-03	13,412	28.8	65.6	5.6	4.30
2003-04	3,933	18.3	66.0	15.7	1.30	2003-04	13,638	28.4	66.0	5.6	4.40
2004-05	4,145	17.9	66.2	15.9	1.30	2004-05	14,087	28.7	65.9	5.3	4.50
2005-06	4,273	19.8	64.3	16.0	1.30	2005-06	14,670	28.9	66.0	5.1	4.60
2006-07	5,068	19.0	62.7	18.3	1.50	2006-07	15,543	28.7	65.3	6.0	4.60
<b>Physical Education</b>						<b>Public Affairs and Services</b>					
1986-87	8,298	60.5	36.6	2.9	3.37	1986-87	7,058	15.6	61.7	22.6	2.87
1987-88	8,700	60.2	37.0	2.8	3.37	1987-88	7,551	15.7	61.4	22.9	2.93
1988-89	8,833	61.3	35.8	2.9	3.39	1988-89	7,910	16.0	62.5	21.6	3.04
1989-90	8,798	61.2	35.9	2.8	3.32	1989-90	8,438	16.4	62.5	21.1	3.15
1990-91	8,949	59.8	37.4	2.9	3.30	1990-91	9,036	16.2	62.7	21.1	3.33
1991-92	8,605	57.3	38.8	4.0	3.26	1991-92	9,104	15.2	61.7	23.1	3.45
1992-93	7,724	54.1	42.7	3.2	3.06	1992-93	9,077	13.1	65.3	21.6	3.60
1993-94	7,358	52.7	44.1	3.2	3.04	1993-94	8,888	13.1	64.9	22.0	3.68
1994-95	7,270	50.3	46.4	3.3	3.01	1994-95	8,815	13.2	65.5	21.2	3.65
1995-96	7,575	48.8	47.8	3.4	3.05	1995-96	9,073	13.4	65.9	20.8	3.65
1996-97	7,910	48.0	48.4	3.6	3.08	1996-97	9,439	13.2	65.8	21.0	3.67
1997-98	8,064	46.6	49.8	3.6	3.07	1997-98	9,657	12.5	66.9	20.6	3.68
1998-99	8,147	46.9	49.6	3.5	3.04	1998-99	9,564	12.3	66.6	21.1	3.56
1999-00	8,288	46.8	49.8	3.4	3.01	1999-00	9,774	12.8	65.3	21.9	3.55
2000-01	8,283	47.3	49.3	3.3	2.93	2000-01	9,868	13.9	64.1	22.0	3.49
2001-02	8,636	47.7	49.0	3.3	2.90	2001-02	10,495	14.6	62.7	22.7	3.50
2002-03	8,768	48.2	48.6	3.3	2.80	2002-03	11,045	13.6	63.0	23.4	3.50
2003-04	8,601	47.3	49.2	3.6	2.80	2003-04	11,469	13.8	62.8	23.5	3.70
2004-05	8,803	46.9	49.8	3.3	2.80	2004-05	11,923	13.8	63.2	23.0	3.80
2005-06	9,083	48.6	48.4	3.1	2.90	2005-06	12,517	14.2	63.4	22.4	3.90
2006-07	9,693	48.8	47.8	3.4	2.90	2006-07	13,866	13.5	59.4	27.0	4.10

Note: Table does not include Summer Arts, International Programs, or CalStateTEACH. As of 1998-1999, data include Statewide Nursing. Totals may differ from other tables due to rounding. Source: Academic Planning Database (APDB).

**Table 158 (continued)**  
**Full-Time Equivalent Students, by Course Discipline**  
**Systemwide, Academic Year**

Discipline Category	FTES	Level			Discipline % of Total	Discipline Category	FTES	Level			Discipline % of Total
		LD%	UD%	GD%				LD%	UD%	GD%	
<b>Social Sciences</b>					<b>All Categories</b>						
1986-87	38,436	52.1	46.1	1.8	15.62	1986-87	246,105	43.2	50.7	6.1	100.00
1987-88	40,497	51.5	46.7	1.8	15.71	1987-88	257,854	42.9	51.0	6.1	100.00
1988-89	41,751	50.6	47.5	1.9	16.04	1988-89	260,275	43.0	50.9	6.1	100.00
1989-90	42,672	49.5	48.5	2.0	16.10	1989-90	265,035	42.3	51.4	6.3	100.00
1990-91	43,968	48.2	49.5	2.1	16.20	1990-91	271,447	41.2	52.2	6.6	100.00
1991-92	43,524	45.4	51.1	3.5	16.48	1991-92	264,071	39.3	52.7	8.0	100.00
1992-93	41,446	43.5	54.0	2.5	16.43	1992-93	252,255	37.5	55.1	7.4	100.00
1993-94	39,493	42.5	55.0	2.5	16.33	1993-94	241,830	37.3	55.1	7.6	100.00
1994-95	39,247	43.7	53.7	2.6	16.25	1994-95	241,541	37.9	54.4	7.7	100.00
1995-96	40,362	44.8	52.7	2.5	16.26	1995-96	248,237	38.8	53.4	7.8	100.00
1996-97	41,425	45.2	52.4	2.4	16.12	1996-97	257,011	39.4	52.8	7.8	100.00
1997-98	42,225	45.5	52.2	2.3	16.10	1997-98	262,276	39.4	52.7	7.9	100.00
1998-99	41,713	45.4	52.2	2.3	15.54	1998-99	268,355	39.6	52.4	8.0	100.00
1999-00	42,305	46.1	51.6	2.3	15.36	1999-00	275,411	39.8	52.0	8.2	100.00
2000-01	43,552	46.8	51.0	2.2	15.40	2000-01	282,754	40.0	51.9	8.2	100.00
2001-02	46,182	47.3	50.6	2.2	15.50	2001-02	298,605	40.1	51.6	8.3	100.00
2002-03	48,474	47.2	50.4	2.4	15.60	2002-03	311,393	39.4	51.7	8.9	100.00
2003-04	48,995	47.1	50.5	2.4	15.70	2003-04	311,467	38.8	52.2	9.0	100.00
2004-05	49,818	45.8	51.6	2.6	16.10	2004-05	310,326	38.9	52.2	8.9	100.00
2005-06	50,940	46.2	51.3	2.5	16.10	2005-06	316,948	39.8	51.6	8.6	100.00
2006-07	52,502	46.9	50.2	2.9	15.70	2006-07	334,388	40.1	50.1	9.8	100.00

Note: Table does not include Summer Arts, International Programs, or CalStateTEACH. As of 1998-1999, data include Statewide Nursing. Systemwide totals may differ from other tables due to rounding. Source: Academic Planning Database (APDB).

Table 159

Student Credit Units by Discipline Division and Level of Instruction, 2006-2007 Academic Year

Course Discipline	Lower Division	Upper Division	Graduate Division	Total	Course Discipline	Lower Division	Upper Division	Graduate Division	Total
<b>Bakersfield</b>					<b>Dominguez Hills</b>				
Agriculture and Natural Resources	—	—	—	—	Agriculture and Natural Resources	—	—	—	—
Architecture/Environmental Design	—	—	—	—	Architecture/Environmental Design	—	—	—	—
Area Studies	—	—	—	—	Area Studies	63	26	—	89
Biological Sciences	1,936	2,352	—	4,288	Biological Sciences	2,436	854	129	3,419
Business and Management	1,820	6,052	396	8,268	Business and Management	1,236	8,853	222	10,311
Communications	1,180	2,287	—	3,467	Communications	689	2,523	—	3,212
Computer Sciences	973	1,298	—	2,271	Computer Sciences	1,158	2,012	29	3,199
Education	518	8,652	4,041	13,211	Education	—	8,312	8,760	17,072
Engineering	51	—	—	51	Engineering	—	—	—	—
Fine and Applied Arts	3,122	3,054	1	6,177	Fine and Applied Arts	3,474	2,048	—	5,522
Foreign Languages	501	868	49	1,418	Foreign Languages	416	943	44	1,403
Health Professions	—	—	—	—	Health Professions	472	1,532	1,125	3,129
Home Economics	—	—	120	120	Home Economics	6	26	705	737
Industrial Education	—	—	—	—	Industrial Education	—	—	—	—
Interdisciplinary	2,211	614	61	2,886	Interdisciplinary	903	4,482	—	5,385
Letters	6,815	5,398	267	12,480	Letters	6,815	8,886	487	16,188
Library Science	—	—	—	—	Library Science	—	—	—	—
Mathematics	5,419	1,701	60	7,180	Mathematics	6,275	424	89	6,788
Military Science	—	—	—	—	Military Science	26	47	—	73
Nursing	835	1,548	240	2,623	Nursing	—	4,499	2,508	7,007
Physical Education	1,379	1,328	—	2,707	Physical Education	1,421	2,007	—	3,428
Physical Science	2,435	1,184	58	3,677	Physical Science	2,704	1,250	—	3,954
Psychology	1,172	3,479	520	5,171	Psychology	1,251	4,496	685	6,432
Public Affairs and Services	440	4,291	2,307	7,038	Public Affairs and Services	592	2,813	1,069	4,474
Social Sciences	6,859	6,169	296	13,324	Social Sciences	7,724	12,288	452	20,464
All Categories	37,666	50,275	8,416	96,357	All Categories	37,661	68,321	16,304	122,286
<b>Channel Islands</b>					<b>East Bay (formerly Hayward)</b>				
Agriculture and Natural Resources	794	284	—	1,078	Agriculture and Natural Resources	—	—	—	—
Architecture/Environmental Design	—	—	—	—	Architecture/Environmental Design	—	—	—	—
Area Studies	—	—	—	—	Area Studies	—	25	—	25
Biological Sciences	1,233	1,549	—	2,782	Biological Sciences	3,272	2,297	340	5,909
Business and Management	694	2,512	—	3,206	Business and Management	2,191	17,585	4,464	24,240
Communications	629	44	—	673	Communications	—	—	—	—
Computer Sciences	1,325	428	—	1,753	Computer Sciences	758	2,602	682	4,042
Education	261	3,323	—	3,584	Education	—	239	13,659	13,898
Engineering	—	—	—	—	Engineering	65	319	120	504
Fine and Applied Arts	1,675	2,605	—	4,280	Fine and Applied Arts	3,987	4,370	108	8,465
Foreign Languages	784	283	—	1,067	Foreign Languages	2,558	355	—	2,913
Health Professions	—	192	—	192	Health Professions	702	2,692	962	4,356
Home Economics	—	—	—	—	Home Economics	—	—	—	—
Industrial Education	—	—	—	—	Industrial Education	—	—	—	—
Interdisciplinary	—	227	—	227	Interdisciplinary	1,680	2,178	281	4,139
Letters	1,540	2,454	—	3,994	Letters	8,101	7,490	749	16,340
Library Science	—	—	—	—	Library Science	520	—	—	520
Mathematics	2,355	983	—	3,338	Mathematics	7,832	1,859	919	10,610
Military Science	—	—	—	—	Military Science	—	—	—	—
Nursing	—	—	—	—	Nursing	1,275	1,627	—	2,902
Physical Education	44	164	—	208	Physical Education	1,884	3,026	284	5,194
Physical Science	1,083	805	—	1,888	Physical Science	3,830	2,256	274	6,360
Psychology	1,242	3,191	—	4,433	Psychology	1,888	7,960	—	9,848
Public Affairs and Services	—	—	—	—	Public Affairs and Services	1,613	5,685	3,475	10,773
Social Sciences	2,638	3,580	—	6,218	Social Sciences	6,652	14,535	716	21,903
All Categories	16,297	22,624	—	38,921	All Categories	48,808	77,100	27,033	152,941
<b>Chico</b>					<b>Fresno</b>				
Agriculture and Natural Resources	1,756	3,615	—	5,371	Agriculture and Natural Resources	2,578	4,478	226	7,282
Architecture/Environmental Design	—	—	—	—	Architecture/Environmental Design	—	15	—	15
Area Studies	252	984	—	1,236	Area Studies	268	391	—	659
Biological Sciences	5,696	4,264	171	10,131	Biological Sciences	7,025	1,960	295	9,280
Business and Management	4,677	14,875	254	19,806	Business and Management	8,045	18,554	973	27,572
Communications	7,808	6,358	119	14,285	Communications	741	3,126	54	3,921
Computer Sciences	1,883	4,576	311	6,770	Computer Sciences	1,421	923	193	2,537
Education	1,476	9,999	644	12,119	Education	683	9,914	6,859	17,456
Engineering	3,768	7,697	352	11,817	Engineering	3,253	5,944	444	9,641
Fine and Applied Arts	7,795	4,469	738	13,002	Fine and Applied Arts	9,383	9,101	337	18,821
Foreign Languages	3,829	2,440	5	6,274	Foreign Languages	3,558	2,262	235	6,055
Health Professions	—	—	—	—	Health Professions	3,796	7,975	2,386	14,157
Home Economics	—	—	—	—	Home Economics	3,737	3,530	68	7,335
Industrial Education	—	—	—	—	Industrial Education	392	1,529	239	2,160
Interdisciplinary	2,072	940	37	3,049	Interdisciplinary	4,678	3,563	12	8,253
Letters	11,232	9,184	289	20,705	Letters	16,473	13,052	884	30,409
Library Science	—	—	—	—	Library Science	—	—	—	—
Mathematics	10,982	1,340	7	12,329	Mathematics	9,213	2,175	147	11,535
Military Science	—	—	—	—	Military Science	130	261	—	391
Nursing	507	2,475	153	3,135	Nursing	618	4,098	712	5,428
Physical Education	5,188	3,593	261	9,042	Physical Education	4,184	4,932	287	9,403
Physical Science	8,278	3,053	45	11,376	Physical Science	9,493	4,130	189	13,812
Psychology	2,596	7,126	739	10,461	Psychology	2,908	6,441	531	9,880
Public Affairs and Services	2,806	8,409	1,155	12,370	Public Affairs and Services	1,174	6,197	1,921	9,292
Social Sciences	20,643	16,639	766	38,048	Social Sciences	19,836	25,239	541	45,616
All Categories	103,244	112,036	6,046	221,326	All Categories	113,587	139,790	17,533	270,910

Note: Student credit units have been annualized.

Table 159 (continued)

Student Credit Units by Discipline Division and Level of Instruction, 2006-2007 Academic Year

Course Discipline	Lower Division	Upper Division	Graduate Division	Total	Course Discipline	Lower Division	Upper Division	Graduate Division	Total
<b>Fullerton</b>					<b>Los Angeles</b>				
Agriculture and Natural Resources	—	—	—	—	Agriculture and Natural Resources	—	—	—	—
Architecture/Environmental Design	—	—	—	—	Architecture/Environmental Design	—	—	—	—
Area Studies	2,737	5,269	126	8,132	Area Studies	117	421	38	576
Biological Sciences	8,842	4,248	275	13,365	Biological Sciences	4,125	2,689	325	7,139
Business and Management	10,464	41,436	2,985	54,885	Business and Management	2,366	18,188	1,737	22,291
Communications	3,508	17,592	261	21,361	Communications	1,058	3,019	324	4,401
Computer Sciences	984	3,206	1,376	5,566	Computer Sciences	1,584	2,873	538	4,995
Education	3,887	23,777	7,678	35,342	Education	1,925	17,175	8,440	27,540
Engineering	1,007	3,252	551	4,810	Engineering	1,170	3,564	696	5,430
Fine and Applied Arts	14,532	19,053	843	34,428	Fine and Applied Arts	6,327	6,375	723	13,425
Foreign Languages	2,800	2,722	219	5,741	Foreign Languages	2,081	1,656	121	3,858
Health Professions	2,166	3,606	391	6,163	Health Professions	867	1,735	299	2,901
Home Economics	—	—	—	—	Home Economics	210	2,243	206	2,659
Industrial Education	—	—	—	—	Industrial Education	407	1,518	75	2,000
Interdisciplinary	2,471	6,527	402	9,400	Interdisciplinary	1,529	3,129	3	4,661
Letters	19,580	15,813	1,718	37,111	Letters	15,395	9,243	1,119	25,757
Library Science	—	—	—	—	Library Science	42	—	—	42
Mathematics	20,546	3,481	235	24,262	Mathematics	9,759	1,063	261	11,083
Military Science	109	143	—	252	Military Science	—	—	—	—
Nursing	—	2,703	1,698	4,401	Nursing	975	2,573	1,023	4,571
Physical Education	5,228	8,164	374	13,766	Physical Education	3,838	2,404	72	6,314
Physical Science	10,846	4,049	269	15,164	Physical Science	6,608	2,190	314	9,112
Psychology	5,280	10,817	458	16,555	Psychology	2,347	7,150	386	9,883
Public Affairs and Services	587	12,278	195	13,060	Public Affairs and Services	1,738	11,047	3,355	16,140
Social Sciences	32,403	32,892	2,619	67,914	Social Sciences	14,270	22,128	1,346	37,744
All Categories	147,977	221,028	22,673	391,678	All Categories	78,738	122,383	21,401	222,522
<b>Humboldt</b>					<b>Maritime Academy</b>				
Agriculture and Natural Resources	1,545	3,982	489	6,016	Agriculture and Natural Resources	—	—	—	—
Architecture/Environmental Design	—	—	—	—	Architecture/Environmental Design	—	—	—	—
Area Studies	—	—	—	—	Area Studies	—	—	—	—
Biological Sciences	3,527	2,910	340	6,777	Biological Sciences	47	—	—	47
Business and Management	991	1,972	263	3,226	Business and Management	562	698	—	1,260
Communications	620	1,054	—	1,674	Communications	—	—	—	—
Computer Sciences	681	513	—	1,194	Computer Sciences	273	68	—	341
Education	306	1,808	170	2,284	Education	—	—	—	—
Engineering	544	962	80	1,586	Engineering	1,920	2,241	—	4,161
Fine and Applied Arts	5,306	5,777	94	11,177	Fine and Applied Arts	—	21	—	21
Foreign Languages	2,220	1,293	—	3,513	Foreign Languages	170	36	—	206
Health Professions	102	647	—	749	Health Professions	—	—	—	—
Home Economics	—	—	—	—	Home Economics	—	—	—	—
Industrial Education	453	304	—	757	Industrial Education	—	—	—	—
Interdisciplinary	1,575	3,631	87	5,293	Interdisciplinary	1,957	2,120	—	4,077
Letters	7,017	4,701	292	12,010	Letters	615	346	—	961
Library Science	—	—	—	—	Library Science	—	—	—	—
Mathematics	6,033	741	126	6,900	Mathematics	776	—	—	776
Military Science	—	—	—	—	Military Science	—	6	—	6
Nursing	349	1,219	—	1,568	Nursing	—	—	—	—
Physical Education	3,462	2,263	95	5,820	Physical Education	270	—	—	270
Physical Science	4,448	2,279	90	6,817	Physical Science	888	—	—	888
Psychology	1,364	2,448	776	4,588	Psychology	36	—	—	36
Public Affairs and Services	433	1,380	794	2,607	Public Affairs and Services	—	—	—	—
Social Sciences	6,811	9,022	391	16,224	Social Sciences	1,071	758	—	1,829
All Categories	47,787	48,906	4,087	100,780	All Categories	8,585	6,294	—	14,879
<b>Long Beach</b>					<b>Monterey Bay</b>				
Agriculture and Natural Resources	—	—	—	—	Agriculture and Natural Resources	—	—	—	—
Architecture/Environmental Design	—	—	—	—	Architecture/Environmental Design	—	—	—	—
Area Studies	312	340	53	705	Area Studies	—	—	—	—
Biological Sciences	10,064	4,331	435	14,830	Biological Sciences	—	—	—	—
Business and Management	4,779	31,797	1,790	38,366	Business and Management	1,976	3,289	120	5,385
Communications	9,224	10,833	187	20,244	Communications	518	1,901	—	2,419
Computer Sciences	—	—	—	—	Computer Sciences	2,049	1,753	763	4,565
Education	1,943	18,242	5,651	25,836	Education	597	—	2,206	2,803
Engineering	5,073	12,021	2,728	19,822	Engineering	—	—	—	—
Fine and Applied Arts	20,140	20,056	1,647	41,843	Fine and Applied Arts	648	2,075	2	2,725
Foreign Languages	7,179	2,578	374	10,131	Foreign Languages	3,836	877	—	4,713
Health Professions	669	9,558	2,353	12,580	Health Professions	—	—	—	—
Home Economics	3,095	5,952	313	9,360	Home Economics	—	—	—	—
Industrial Education	—	979	488	1,467	Industrial Education	—	—	—	—
Interdisciplinary	4,359	4,945	27	9,331	Interdisciplinary	1,993	1,954	221	4,168
Letters	22,966	17,173	1,892	42,031	Letters	1,851	3,858	—	5,709
Library Science	—	3	215	218	Library Science	—	—	—	—
Mathematics	19,593	3,466	589	23,648	Mathematics	3,893	606	—	4,499
Military Science	21	44	—	65	Military Science	—	—	—	—
Nursing	1,884	4,309	1,458	7,651	Nursing	—	—	—	—
Physical Education	6,406	4,315	396	11,117	Physical Education	1,742	1,618	2	3,362
Physical Science	15,867	3,971	447	20,285	Physical Science	2,943	1,218	111	4,272
Psychology	7,229	10,715	586	18,530	Psychology	—	—	—	—
Public Affairs and Services	3,330	8,980	7,024	19,334	Public Affairs and Services	723	1,812	206	2,741
Social Sciences	35,079	25,965	1,113	62,157	Social Sciences	1,632	3,243	20	4,895
All Categories	179,212	200,573	29,766	409,551	All Categories	24,401	24,204	3,651	52,256

Note: Student credit units have been annualized.

Table 159 (continued)

Student Credit Units by Discipline Division and Level of Instruction, 2006-2007 Academic Year

Course Discipline	Lower Division	Upper Division	Graduate Division	Total	Course Discipline	Lower Division	Upper Division	Graduate Division	Total
<b>Northridge</b>					<b>San Bernardino</b>				
Agriculture and Natural Resources	—	—	—	—	Agriculture and Natural Resources	—	—	—	—
Architecture/Environmental Design	—	—	—	—	Architecture/Environmental Design	—	—	—	—
Area Studies	848	662	—	1,510	Area Studies	—	—	—	—
Biological Sciences	8,358	4,194	1,391	13,943	Biological Sciences	5,208	1,097	233	6,538
Business and Management	6,979	27,684	1,171	35,834	Business and Management	3,652	13,894	2,916	20,462
Communications	3,905	9,615	408	13,928	Communications	3,852	2,443	524	6,819
Computer Sciences	4,486	2,563	580	7,629	Computer Sciences	2,037	2,057	823	4,917
Education	3,026	7,900	23,056	33,982	Education	502	3,826	14,472	18,800
Engineering	1,673	5,587	2,729	9,989	Engineering	—	—	—	—
Fine and Applied Arts	12,878	14,890	917	28,685	Fine and Applied Arts	5,141	3,492	581	9,214
Foreign Languages	4,032	1,504	322	5,858	Foreign Languages	4,101	1,209	283	5,593
Health Professions	1,993	11,749	2,854	16,596	Health Professions	1,546	1,976	554	4,076
Home Economics	2,473	8,283	745	11,501	Home Economics	—	—	—	—
Industrial Education	—	—	—	—	Industrial Education	—	—	—	—
Interdisciplinary	3,291	2,251	—	5,542	Interdisciplinary	893	4,108	21	5,022
Letters	18,886	21,995	1,177	42,058	Letters	11,428	10,506	1,275	23,209
Library Science	—	—	—	—	Library Science	—	—	—	—
Mathematics	20,552	2,508	291	23,351	Mathematics	10,657	3,138	637	14,432
Military Science	—	—	—	—	Military Science	88	66	3	157
Nursing	—	—	—	—	Nursing	1,092	2,534	147	3,773
Physical Education	4,463	5,546	358	10,367	Physical Education	6,236	1,957	62	8,255
Physical Science	13,201	4,240	483	17,924	Physical Science	7,418	1,307	126	8,851
Psychology	4,135	13,813	667	18,615	Psychology	6,211	8,419	1,229	15,859
Public Affairs and Services	739	1,919	880	3,538	Public Affairs and Services	990	4,773	3,534	9,297
Social Sciences	38,781	40,630	1,786	81,197	Social Sciences	13,150	13,992	1,394	28,536
All Categories	154,699	187,533	39,815	382,047	All Categories	84,202	80,794	28,814	193,810
<b>Pomona</b>					<b>San Diego</b>				
Agriculture and Natural Resources	3,670	5,134	65	8,869	Agriculture and Natural Resources	—	—	—	—
Architecture/Environmental Design	2,905	5,759	1,357	10,021	Architecture/Environmental Design	—	—	353	353
Area Studies	—	—	—	—	Area Studies	865	1,043	90	1,998
Biological Sciences	6,363	5,208	311	11,882	Biological Sciences	9,851	6,049	1,008	16,908
Business and Management	6,666	34,597	874	42,137	Business and Management	4,828	23,839	5,124	33,791
Communications	5,251	1,626	—	6,877	Communications	9,748	13,064	623	23,435
Computer Sciences	4,188	5,091	169	9,448	Computer Sciences	4,677	6,719	1,356	12,752
Education	200	4,024	4,189	8,413	Education	1,741	7,577	16,323	25,641
Engineering	10,524	16,816	574	27,914	Engineering	3,716	7,890	1,556	13,162
Fine and Applied Arts	8,162	3,311	—	11,473	Fine and Applied Arts	11,434	11,717	902	24,053
Foreign Languages	3,234	431	—	3,665	Foreign Languages	12,081	4,318	219	16,618
Health Professions	—	—	—	—	Health Professions	2,291	3,299	5,057	10,647
Home Economics	1,630	1,893	171	3,694	Home Economics	1,300	1,229	114	2,643
Industrial Education	—	—	—	—	Industrial Education	—	—	—	—
Interdisciplinary	2,730	2,237	143	5,110	Interdisciplinary	2,349	6,433	295	9,077
Letters	14,121	3,936	438	18,495	Letters	29,616	17,547	1,380	48,543
Library Science	—	—	—	—	Library Science	—	—	—	—
Mathematics	17,605	2,004	281	19,890	Mathematics	13,423	2,715	591	16,729
Military Science	76	25	—	101	Military Science	257	222	—	479
Nursing	—	—	—	—	Nursing	1,509	5,445	544	7,498
Physical Education	3,087	3,266	97	6,450	Physical Education	2,961	6,384	426	9,771
Physical Science	11,368	3,666	126	15,160	Physical Science	14,276	9,090	683	24,049
Psychology	4,492	4,657	285	9,434	Psychology	8,349	15,340	1,320	25,009
Public Affairs and Services	—	700	269	969	Public Affairs and Services	2,243	14,033	3,595	19,871
Social Sciences	20,647	12,867	205	33,719	Social Sciences	33,369	32,857	1,787	68,013
All Categories	126,919	117,248	9,554	253,721	All Categories	170,884	196,810	43,346	411,040
<b>Sacramento</b>					<b>San Francisco</b>				
Agriculture and Natural Resources	—	—	—	—	Agriculture and Natural Resources	—	—	—	—
Architecture/Environmental Design	769	787	—	1,556	Architecture/Environmental Design	601	1,191	—	1,792
Area Studies	—	15	—	15	Area Studies	68	238	—	306
Biological Sciences	5,668	4,607	366	10,641	Biological Sciences	7,475	9,411	1,001	17,887
Business and Management	3,465	29,285	1,206	33,956	Business and Management	5,558	32,539	3,558	41,655
Communications	7,630	10,298	240	18,168	Communications	2,206	8,453	223	10,882
Computer Sciences	3,801	4,202	866	8,869	Computer Sciences	2,095	3,641	681	6,417
Education	2,969	18,218	12,887	34,074	Education	1,500	9,416	11,901	22,817
Engineering	3,405	7,376	1,302	12,083	Engineering	1,021	2,824	292	4,137
Fine and Applied Arts	9,371	9,683	377	19,431	Fine and Applied Arts	5,224	17,136	1,336	23,696
Foreign Languages	5,014	2,045	234	7,293	Foreign Languages	5,649	2,737	638	9,024
Health Professions	311	4,208	1,908	6,427	Health Professions	151	4,694	2,022	6,867
Home Economics	2,002	3,439	—	5,441	Home Economics	1,003	3,519	161	4,683
Industrial Education	—	—	—	—	Industrial Education	127	2,739	187	3,053
Interdisciplinary	9,564	1,901	213	11,678	Interdisciplinary	2,086	4,408	799	7,293
Letters	14,288	11,645	1,040	26,973	Letters	26,264	26,660	3,627	56,551
Library Science	—	—	—	—	Library Science	—	—	—	—
Mathematics	9,401	2,096	83	11,580	Mathematics	11,162	1,314	284	12,760
Military Science	67	116	—	183	Military Science	—	—	—	—
Nursing	1,626	5,464	642	7,732	Nursing	386	2,594	1,178	4,158
Physical Education	2,461	4,641	248	7,350	Physical Education	2,716	4,044	263	7,023
Physical Science	10,612	3,533	217	14,362	Physical Science	11,704	4,859	484	17,047
Psychology	2,778	7,934	797	11,509	Psychology	2,601	11,274	1,037	14,912
Public Affairs and Services	4,599	18,194	5,320	28,113	Public Affairs and Services	1,012	6,773	3,054	10,839
Social Sciences	24,599	27,005	1,577	53,181	Social Sciences	26,790	32,553	1,540	60,883
All Categories	124,400	176,692	29,523	330,615	All Categories	117,399	193,017	34,266	344,682

Note: Student credit units have been annualized.

Table 159 (continued)

Student Credit Units by Discipline Division and Level of Instruction, 2006-2007 Academic Year

Course Discipline	Lower Division	Upper Division	Graduate Division	Total	Course Discipline	Lower Division	Upper Division	Graduate Division	Total
<b>San Jose</b>					<b>Sonoma</b>				
Agriculture and Natural Resources	—	4	—	4	Agriculture and Natural Resources	—	—	—	—
Architecture/Environmental Design	492	553	930	1,975	Architecture/Environmental Design	—	—	—	—
Area Studies	1,572	414	—	1,986	Area Studies	—	—	—	—
Biological Sciences	6,872	3,365	676	10,913	Biological Sciences	3,492	1,670	105	5,267
Business and Management	6,592	34,503	1,800	42,895	Business and Management	2,465	7,633	228	10,326
Communications	2,308	5,819	360	8,487	Communications	492	1,382	—	1,874
Computer Sciences	1,430	6,370	711	8,511	Computer Sciences	1,355	473	—	1,828
Education	2,089	12,104	9,194	23,387	Education	385	6,387	2,202	8,974
Engineering	3,005	15,308	12,288	30,601	Engineering	46	10	—	56
Fine and Applied Arts	10,631	13,166	740	24,537	Fine and Applied Arts	3,990	3,278	4	7,272
Foreign Languages	3,660	1,729	187	5,576	Foreign Languages	1,160	780	—	1,940
Health Professions	1,271	5,283	2,338	8,892	Health Professions	—	—	—	—
Home Economics	1,709	3,619	365	5,693	Home Economics	—	—	—	—
Industrial Education	1,229	1,716	105	3,050	Industrial Education	—	—	—	—
Interdisciplinary	3,850	1,981	181	6,012	Interdisciplinary	5,017	4,858	6	9,881
Letters	24,436	12,942	1,375	38,753	Letters	6,077	3,054	215	9,346
Library Science	—	—	5,004	5,004	Library Science	—	—	—	—
Mathematics	13,196	2,793	316	16,305	Mathematics	6,006	640	—	6,646
Military Science	40	61	—	101	Military Science	—	—	—	—
Nursing	1,630	3,047	148	4,825	Nursing	341	1,546	822	2,709
Physical Education	5,877	3,243	622	9,742	Physical Education	2,218	2,049	57	4,324
Physical Science	10,994	6,190	473	17,657	Physical Science	4,215	1,360	—	5,575
Psychology	2,384	6,469	573	9,426	Psychology	1,435	5,846	12	7,293
Public Affairs and Services	2,830	8,088	4,784	15,702	Public Affairs and Services	444	1,824	6	2,274
Social Sciences	16,803	16,956	1,167	34,926	Social Sciences	9,832	12,699	437	22,968
All Categories	124,900	165,723	44,337	334,960	All Categories	48,970	55,489	4,094	108,553
<b>San Luis Obispo</b>					<b>Stanislaus</b>				
Agriculture and Natural Resources	10,738	13,927	532	25,197	Agriculture and Natural Resources	—	99	—	99
Architecture/Environmental Design	6,023	6,214	554	12,791	Architecture/Environmental Design	—	—	—	—
Area Studies	—	—	—	—	Area Studies	—	—	—	—
Biological Sciences	6,187	4,571	148	10,906	Biological Sciences	2,979	2,183	43	5,205
Business and Management	4,363	13,760	806	18,929	Business and Management	1,508	7,688	457	9,653
Communications	424	1,211	—	1,635	Communications	141	557	—	698
Computer Sciences	1,222	1,448	219	2,889	Computer Sciences	1,247	1,627	34	2,908
Education	236	2,591	1,158	3,985	Education	145	9,014	2,749	11,908
Engineering	15,647	25,613	2,551	43,811	Engineering	—	—	—	—
Fine and Applied Arts	6,975	3,140	—	10,115	Fine and Applied Arts	3,124	3,506	16	6,646
Foreign Languages	2,332	511	—	2,843	Foreign Languages	876	603	—	1,479
Health Professions	—	—	—	—	Health Professions	499	892	—	1,391
Home Economics	458	827	—	1,285	Home Economics	—	—	—	—
Industrial Education	895	4,204	78	5,177	Industrial Education	—	—	—	—
Interdisciplinary	1,145	1,387	—	2,532	Interdisciplinary	956	1,316	25	2,297
Letters	20,654	9,823	209	30,686	Letters	7,575	5,811	272	13,658
Library Science	—	—	—	—	Library Science	—	—	—	—
Mathematics	17,675	3,697	221	21,593	Mathematics	5,309	560	1	5,870
Military Science	152	66	—	218	Military Science	—	—	—	—
Nursing	—	—	—	—	Nursing	751	1,171	—	1,922
Physical Education	3,364	2,002	134	5,500	Physical Education	939	1,500	18	2,457
Physical Science	14,960	4,437	87	19,484	Physical Science	3,255	2,251	—	5,506
Psychology	3,760	4,588	321	8,669	Psychology	1,435	4,109	376	5,920
Public Affairs and Services	635	1,414	22	2,071	Public Affairs and Services	1,189	2,591	2,308	6,088
Social Sciences	16,194	9,285	320	25,799	Social Sciences	6,593	9,050	78	15,721
All Categories	134,039	114,716	7,360	256,115	All Categories	38,521	54,528	6,377	99,426
<b>San Marcos</b>					<b>Systemwide</b>				
Agriculture and Natural Resources	—	—	—	—	Agriculture and Natural Resources	21,081	31,523	1,312	53,916
Architecture/Environmental Design	—	—	—	—	Architecture/Environmental Design	10,790	14,519	3,194	28,503
Area Studies	—	—	—	—	Area Studies	7,102	9,828	307	17,237
Biological Sciences	1,944	3,569	111	5,624	Biological Sciences	112,600	73,378	7,703	193,681
Business and Management	1,463	11,465	614	13,542	Business and Management	87,340	402,698	31,958	521,996
Communications	2,229	3,611	—	5,840	Communications	64,161	106,816	3,323	174,300
Computer Sciences	378	1,083	40	1,501	Computer Sciences	40,005	55,526	9,371	104,902
Education	—	9,354	2,207	11,561	Education	24,389	191,852	158,446	374,687
Engineering	—	—	—	—	Engineering	55,888	117,424	26,263	199,575
Fine and Applied Arts	2,128	3,538	—	5,666	Fine and Applied Arts	155,447	165,861	9,366	330,674
Foreign Languages	4,163	957	57	5,177	Foreign Languages	76,234	33,137	2,987	112,358
Health Professions	—	—	—	—	Health Professions	16,836	60,038	22,249	99,123
Home Economics	—	—	—	—	Home Economics	17,623	34,560	2,968	55,151
Industrial Education	—	—	—	—	Industrial Education	3,503	12,989	1,172	17,664
Interdisciplinary	5,140	3,398	—	8,538	Interdisciplinary	62,449	68,588	2,814	133,851
Letters	4,353	2,992	195	7,540	Letters	296,098	224,509	18,900	539,507
Library Science	—	—	—	—	Library Science	562	3	5,219	5,784
Mathematics	4,037	1,085	14	5,136	Mathematics	231,699	40,389	5,152	277,240
Military Science	—	—	—	—	Military Science	966	1,057	3	2,026
Nursing	567	—	—	567	Nursing	14,345	46,852	11,273	72,470
Physical Education	1,188	863	—	2,051	Physical Education	70,556	69,309	4,056	143,921
Physical Science	1,815	867	—	2,682	Physical Science	173,241	68,185	4,476	245,902
Psychology	1,902	5,499	63	7,464	Psychology	66,795	151,771	11,361	229,927
Public Affairs and Services	—	—	—	—	Public Affairs and Services	28,117	123,201	45,273	196,591
Social Sciences	6,708	12,901	253	19,862	Social Sciences	369,084	393,253	18,804	781,141
All Categories	38,015	61,182	3,554	102,751	All Categories	2,006,911	2,497,266	407,950	4,912,127

Note: Student credit units were annualized and campus figures were summed to produce systemwide totals that may differ from other tables due to rounding. A dash (—) indicates a zero total. Source: Academic Planning Database (APDB).

Table 160

Full-Time Equivalent Faculty by Discipline Division and Level of Instruction, 2006-2007 Academic Year

Course Discipline	Lower Division	Upper Division	Graduate Division	Total	Course Discipline	Lower Division	Upper Division	Graduate Division	Total
<b>Bakersfield</b>					<b>Dominguez Hills</b>				
Agriculture and Natural Resources	—	—	—	—	Agriculture and Natural Resources	—	—	—	—
Architecture/Environmental Design	—	—	—	—	Architecture/Environmental Design	—	—	—	—
Area Studies	—	—	—	—	Area Studies	0.3	0.4	—	0.7
Biological Sciences	5.8	7.7	—	13.5	Biological Sciences	4.9	3.8	1.2	9.9
Business and Management	4.9	19.3	2.7	26.9	Business and Management	2.7	25.5	2.2	30.4
Communications	3.7	7.7	—	11.4	Communications	1.4	8.9	—	10.3
Computer Sciences	4.3	5.6	—	9.9	Computer Sciences	4.5	9.0	0.6	14.1
Education	2.1	29.1	18.3	49.5	Education	—	24.1	31.7	55.8
Engineering	0.4	—	—	0.4	Engineering	—	—	—	—
Fine and Applied Arts	10.8	12.9	0.1	23.8	Fine and Applied Arts	9.2	11.7	—	20.9
Foreign Languages	2.6	3.0	0.6	6.2	Foreign Languages	1.6	3.6	0.5	5.7
Health Professions	—	—	—	—	Health Professions	1.0	6.1	6.3	13.4
Home Economics	—	—	0.5	0.5	Home Economics	0.1	0.5	2.8	3.4
Industrial Education	—	—	—	—	Industrial Education	—	—	—	—
Interdisciplinary	4.3	2.3	0.4	7.0	Interdisciplinary	1.6	9.6	—	11.2
Letters	17.3	17.0	1.7	36.0	Letters	16.0	22.9	4.4	43.3
Library Science	—	—	—	—	Library Science	—	—	—	—
Mathematics	17.1	8.8	1.2	27.1	Mathematics	12.0	2.5	0.6	15.1
Military Science	—	—	—	—	Military Science	—	—	—	—
Nursing	5.1	13.0	3.1	21.2	Nursing	—	18.6	12.3	30.9
Physical Education	3.6	3.0	—	6.6	Physical Education	7.0	6.7	—	13.7
Physical Science	9.4	6.2	1.5	17.1	Physical Science	7.5	7.7	—	15.2
Psychology	2.7	11.0	3.8	17.5	Psychology	2.2	8.8	4.8	15.8
Public Affairs and Services	0.7	8.9	12.0	21.6	Public Affairs and Services	1.4	8.5	6.2	16.1
Social Sciences	11.5	21.4	3.1	36.0	Social Sciences	12.2	31.0	2.4	45.6
All Categories	106.3	176.9	49.0	332.2	All Categories	85.6	209.9	76.0	371.5
<b>Channel Islands</b>					<b>East Bay (formerly Hayward)</b>				
Agriculture and Natural Resources	2.1	1.9	—	4.0	Agriculture and Natural Resources	—	—	—	—
Architecture/Environmental Design	—	—	—	—	Architecture/Environmental Design	—	—	—	—
Area Studies	—	—	—	—	Area Studies	—	0.1	—	0.1
Biological Sciences	3.9	8.1	—	12.0	Biological Sciences	6.4	7.8	4.1	18.3
Business and Management	2.1	7.8	—	9.9	Business and Management	3.2	37.8	18.6	59.6
Communications	1.9	0.2	—	2.1	Communications	—	—	—	—
Computer Sciences	5.3	2.6	—	7.9	Computer Sciences	2.9	11.6	5.2	19.7
Education	1.4	21.7	—	23.1	Education	—	0.9	69.4	70.3
Engineering	—	—	—	—	Engineering	0.7	2.4	0.8	3.9
Fine and Applied Arts	6.8	9.5	—	16.3	Fine and Applied Arts	14.8	23.2	1.4	39.4
Foreign Languages	2.7	1.8	—	4.5	Foreign Languages	7.9	1.7	—	9.6
Health Professions	—	0.5	—	0.5	Health Professions	0.6	5.5	5.3	11.4
Home Economics	—	—	—	—	Home Economics	—	—	—	—
Industrial Education	—	—	—	—	Industrial Education	—	—	—	—
Interdisciplinary	—	3.5	—	3.5	Interdisciplinary	5.4	5.3	1.9	12.6
Letters	5.4	10.5	—	15.9	Letters	24.6	24.4	5.6	54.6
Library Science	—	—	—	—	Library Science	9.0	—	—	9.0
Mathematics	8.5	6.8	—	15.3	Mathematics	19.6	8.0	5.3	32.9
Military Science	—	—	—	—	Military Science	—	—	—	—
Nursing	—	—	—	—	Nursing	5.7	10.0	—	15.7
Physical Education	0.1	0.5	—	0.6	Physical Education	6.1	15.1	3.5	24.7
Physical Science	4.9	5.3	—	10.2	Physical Science	10.2	10.0	2.2	22.4
Psychology	2.4	10.5	—	12.9	Psychology	3.1	22.0	—	25.1
Public Affairs and Services	—	—	—	—	Public Affairs and Services	3.4	15.5	17.8	36.7
Social Sciences	7.2	12.0	—	19.2	Social Sciences	12.1	43.1	8.0	63.2
All Categories	54.7	103.2	—	157.9	All Categories	135.7	244.4	149.1	529.2
<b>Chico</b>					<b>Fresno</b>				
Agriculture and Natural Resources	6.0	13.7	—	19.7	Agriculture and Natural Resources	9.3	21.6	2.5	33.4
Architecture/Environmental Design	—	—	—	—	Architecture/Environmental Design	—	0.1	—	0.1
Area Studies	0.7	2.5	—	3.2	Area Studies	1.0	0.9	—	1.9
Biological Sciences	14.1	18.2	2.4	34.7	Biological Sciences	13.9	10.7	3.7	28.3
Business and Management	10.2	40.0	1.8	52.0	Business and Management	14.8	45.8	5.1	65.7
Communications	17.6	22.5	1.7	41.8	Communications	2.1	10.7	0.7	13.5
Computer Sciences	5.5	14.6	2.0	22.1	Computer Sciences	4.6	4.3	1.7	10.6
Education	4.3	38.5	5.3	48.1	Education	2.0	38.7	39.7	80.4
Engineering	13.6	24.6	1.9	40.1	Engineering	9.4	22.5	4.0	35.9
Fine and Applied Arts	26.7	26.8	6.7	60.2	Fine and Applied Arts	28.0	42.7	3.9	74.6
Foreign Languages	11.6	7.0	0.1	18.7	Foreign Languages	13.2	10.1	2.4	25.7
Health Professions	—	—	—	—	Health Professions	8.0	17.4	16.7	42.1
Home Economics	—	—	—	—	Home Economics	6.7	11.3	0.7	18.7
Industrial Education	—	—	—	—	Industrial Education	1.6	6.8	1.4	9.8
Interdisciplinary	6.9	4.6	0.9	12.4	Interdisciplinary	11.5	7.9	1.0	20.4
Letters	27.2	29.0	3.6	59.8	Letters	48.3	48.8	11.6	108.7
Library Science	—	—	—	—	Library Science	—	—	—	—
Mathematics	25.8	7.2	0.1	33.1	Mathematics	16.6	6.8	1.6	25.0
Military Science	—	—	—	—	Military Science	—	—	—	—
Nursing	3.7	17.8	1.8	23.3	Nursing	2.1	23.5	5.0	30.6
Physical Education	15.2	14.0	2.3	31.5	Physical Education	12.9	21.7	3.1	37.7
Physical Science	23.5	16.8	1.0	41.3	Physical Science	22.3	18.5	4.1	44.9
Psychology	3.0	16.6	8.3	27.9	Psychology	4.2	19.7	4.5	28.4
Public Affairs and Services	6.5	24.3	8.0	38.8	Public Affairs and Services	2.8	20.9	14.1	37.8
Social Sciences	37.6	55.1	9.0	101.7	Social Sciences	38.8	61.7	4.2	104.7
All Categories	259.7	393.8	56.9	710.4	All Categories	274.1	473.1	131.7	878.9

Table 160 (continued)

Full-Time Equivalent Faculty by Discipline Division and Level of Instruction, 2006-2007 Academic Year

Course Discipline	Lower Division	Upper Division	Graduate Division	Total	Course Discipline	Lower Division	Upper Division	Graduate Division	Total
<b>Fullerton</b>					<b>Los Angeles</b>				
Agriculture and Natural Resources	—	—	—	—	Agriculture and Natural Resources	—	—	—	—
Architecture/Environmental Design	—	—	—	—	Architecture/Environmental Design	—	—	—	—
Area Studies	5.4	13.4	1.9	20.7	Area Studies	0.4	0.7	0.3	1.4
Biological Sciences	20.0	16.4	5.0	41.4	Biological Sciences	14.7	10.8	5.8	31.3
Business and Management	18.8	109.3	16.0	144.1	Business and Management	6.2	45.9	7.2	59.3
Communications	9.0	47.7	2.8	59.5	Communications	3.0	13.7	2.8	19.5
Computer Sciences	3.8	10.4	7.0	21.2	Computer Sciences	5.4	10.1	3.8	19.3
Education	9.1	100.2	42.7	152.0	Education	4.8	53.2	47.1	105.1
Engineering	5.5	16.8	4.3	26.6	Engineering	5.9	18.8	5.5	30.2
Fine and Applied Arts	45.5	80.2	10.6	136.3	Fine and Applied Arts	34.0	47.0	9.8	90.8
Foreign Languages	10.1	14.4	2.0	26.5	Foreign Languages	14.4	10.5	1.4	26.3
Health Professions	3.0	8.6	2.3	13.9	Health Professions	1.8	3.8	3.0	8.6
Home Economics	—	—	—	—	Home Economics	0.3	5.5	1.3	7.1
Industrial Education	—	—	—	—	Industrial Education	2.1	8.8	1.0	11.9
Interdisciplinary	8.0	24.1	3.2	35.3	Interdisciplinary	6.0	13.6	—	19.6
Letters	56.8	54.1	14.9	125.8	Letters	40.7	28.7	7.7	77.1
Library Science	—	—	—	—	Library Science	1.1	—	—	1.1
Mathematics	40.6	16.8	2.7	60.1	Mathematics	28.2	5.4	1.9	35.5
Military Science	—	—	—	—	Military Science	—	—	—	—
Nursing	—	20.2	7.6	27.8	Nursing	8.2	15.4	6.6	30.2
Physical Education	22.2	26.3	2.2	50.7	Physical Education	13.0	17.5	1.2	31.7
Physical Science	29.4	20.0	5.2	54.6	Physical Science	22.3	13.8	5.6	41.7
Psychology	10.6	28.3	5.5	44.4	Psychology	3.4	16.3	3.4	23.1
Public Affairs and Services	1.9	39.7	1.4	43.0	Public Affairs and Services	2.3	24.9	13.5	40.7
Social Sciences	57.9	103.1	19.2	180.2	Social Sciences	34.4	64.2	11.4	110.0
All Categories	357.6	750.0	156.5	1,264.1	All Categories	252.6	428.6	140.3	821.5
<b>Humboldt</b>					<b>Maritime Academy</b>				
Agriculture and Natural Resources	4.3	16.4	5.7	26.4	Agriculture and Natural Resources	—	—	—	—
Architecture/Environmental Design	—	—	—	—	Architecture/Environmental Design	—	—	—	—
Area Studies	—	—	—	—	Area Studies	—	—	—	—
Biological Sciences	11.1	14.6	3.9	29.6	Biological Sciences	0.4	—	—	0.4
Business and Management	1.5	6.8	0.8	9.1	Business and Management	2.0	2.9	—	4.9
Communications	2.1	3.7	—	5.8	Communications	—	—	—	—
Computer Sciences	3.0	3.0	—	6.0	Computer Sciences	1.7	0.3	—	2.0
Education	0.8	7.1	2.6	10.5	Education	—	—	—	—
Engineering	2.1	5.0	0.8	7.9	Engineering	7.9	11.6	—	19.5
Fine and Applied Arts	16.8	24.1	0.8	41.7	Fine and Applied Arts	—	1.5	—	1.5
Foreign Languages	5.4	4.9	—	10.3	Foreign Languages	1.7	0.3	—	2.0
Health Professions	0.3	1.1	—	1.4	Health Professions	—	—	—	—
Home Economics	—	—	—	—	Home Economics	—	—	—	—
Industrial Education	1.5	1.7	—	3.2	Industrial Education	—	—	—	—
Interdisciplinary	3.6	14.1	0.7	18.4	Interdisciplinary	7.8	10.1	—	17.9
Letters	20.0	17.9	2.5	40.4	Letters	3.0	2.2	—	5.2
Library Science	—	—	—	—	Library Science	—	—	—	—
Mathematics	14.8	4.5	1.4	20.7	Mathematics	3.4	—	—	3.4
Military Science	—	—	—	—	Military Science	—	—	—	—
Nursing	1.9	7.7	—	9.6	Nursing	—	—	—	—
Physical Education	6.9	5.1	1.4	13.4	Physical Education	10.7	—	—	10.7
Physical Science	13.1	13.4	1.6	28.1	Physical Science	4.8	—	—	4.8
Psychology	1.8	6.9	5.7	14.4	Psychology	0.2	—	—	0.2
Public Affairs and Services	1.3	5.2	5.5	12.0	Public Affairs and Services	—	—	—	—
Social Sciences	11.5	28.4	3.7	43.6	Social Sciences	3.0	2.7	—	5.7
All Categories	123.8	191.6	37.1	352.5	All Categories	46.6	31.6	—	78.2
<b>Long Beach</b>					<b>Monterey Bay</b>				
Agriculture and Natural Resources	—	—	—	—	Agriculture and Natural Resources	—	—	—	—
Architecture/Environmental Design	—	—	—	—	Architecture/Environmental Design	—	—	—	—
Area Studies	1.0	1.6	0.7	3.3	Area Studies	—	—	—	—
Biological Sciences	22.9	19.4	7.2	49.5	Biological Sciences	—	—	—	—
Business and Management	7.5	74.6	10.8	92.9	Business and Management	4.4	8.9	0.6	13.9
Communications	26.6	40.4	2.2	69.2	Communications	0.8	6.1	—	6.9
Computer Sciences	—	—	—	—	Computer Sciences	5.5	6.8	2.7	15.0
Education	2.5	67.2	40.0	109.7	Education	1.3	—	9.8	11.1
Engineering	24.8	57.4	18.6	100.8	Engineering	—	—	—	—
Fine and Applied Arts	62.9	94.9	16.6	174.4	Fine and Applied Arts	2.5	8.3	—	10.8
Foreign Languages	24.4	16.6	4.4	45.4	Foreign Languages	7.6	3.4	—	11.0
Health Professions	1.7	23.7	15.9	41.3	Health Professions	—	—	—	—
Home Economics	5.7	17.2	2.5	25.4	Home Economics	—	—	—	—
Industrial Education	—	6.2	3.4	9.6	Industrial Education	—	—	—	—
Interdisciplinary	12.7	18.9	0.4	32.0	Interdisciplinary	5.4	6.8	0.1	12.3
Letters	55.5	55.3	18.0	128.8	Letters	5.4	11.8	—	17.2
Library Science	—	—	1.0	1.0	Library Science	—	—	—	—
Mathematics	48.8	15.0	6.8	70.6	Mathematics	6.3	2.9	—	9.2
Military Science	—	—	—	—	Military Science	—	—	—	—
Nursing	7.5	23.5	12.0	43.0	Nursing	—	—	—	—
Physical Education	35.1	19.8	3.5	58.4	Physical Education	4.4	4.7	—	9.1
Physical Science	44.8	25.2	10.4	80.4	Physical Science	7.8	6.0	1.2	15.0
Psychology	11.9	27.7	7.3	46.9	Psychology	—	—	—	—
Public Affairs and Services	6.2	27.7	39.5	73.4	Public Affairs and Services	2.2	5.6	1.9	9.7
Social Sciences	55.3	95.3	15.5	166.1	Social Sciences	3.6	10.7	0.3	14.6
All Categories	457.8	727.6	236.7	1,421.1	All Categories	57.2	82.0	16.6	155.8

Table 160 (continued)

Full-Time Equivalent Faculty by Discipline Division and Level of Instruction, 2006-2007 Academic Year

Course Discipline	Lower Division	Upper Division	Graduate Division	Total	Course Discipline	Lower Division	Upper Division	Graduate Division	Total
<b>Northridge</b>					<b>San Bernardino</b>				
Agriculture and Natural Resources	—	—	—	—	Agriculture and Natural Resources	—	—	—	—
Architecture/Environmental Design	—	—	—	—	Architecture/Environmental Design	—	—	—	—
Area Studies	2.7	2.4	—	5.1	Area Studies	—	—	—	—
Biological Sciences	20.1	18.0	12.7	50.8	Biological Sciences	9.2	6.4	3.5	19.1
Business and Management	13.5	53.6	4.2	71.3	Business and Management	5.5	37.7	13.7	56.9
Communications	9.1	27.8	2.5	39.4	Communications	11.1	9.3	4.9	25.3
Computer Sciences	13.4	10.3	3.6	27.3	Computer Sciences	5.9	7.9	7.5	21.3
Education	7.2	26.8	118.6	152.6	Education	1.9	19.5	79.3	100.7
Engineering	8.7	24.7	14.2	47.6	Engineering	—	—	—	—
Fine and Applied Arts	37.5	51.3	8.0	96.8	Fine and Applied Arts	14.7	21.5	5.0	41.2
Foreign Languages	12.7	5.9	1.5	20.1	Foreign Languages	14.5	6.6	1.7	22.8
Health Professions	4.3	31.9	16.0	52.2	Health Professions	2.9	8.1	3.8	14.8
Home Economics	6.1	21.2	4.4	31.7	Home Economics	—	—	—	—
Industrial Education	—	—	—	—	Industrial Education	—	—	—	—
Interdisciplinary	9.3	7.4	—	16.7	Interdisciplinary	2.8	4.9	0.3	8.0
Letters	55.0	62.4	10.9	128.3	Letters	32.1	26.8	9.5	68.4
Library Science	—	—	—	—	Library Science	—	—	—	—
Mathematics	42.8	10.8	2.9	56.5	Mathematics	26.8	11.0	4.4	42.2
Military Science	—	—	—	—	Military Science	—	—	—	—
Nursing	—	—	—	—	Nursing	6.4	15.8	1.4	23.6
Physical Education	21.7	19.2	2.7	43.6	Physical Education	16.6	7.3	0.4	24.3
Physical Science	28.4	16.6	5.8	50.8	Physical Science	17.1	10.3	1.7	29.1
Psychology	4.2	27.9	5.6	37.7	Psychology	8.6	20.3	14.2	43.1
Public Affairs and Services	2.4	4.9	5.4	12.7	Public Affairs and Services	1.0	11.3	18.8	31.1
Social Sciences	72.2	104.9	14.9	192.0	Social Sciences	13.0	39.1	9.7	61.8
All Categories	371.3	528.0	233.9	1,133.2	All Categories	190.1	263.8	179.8	633.7
<b>Pomona</b>					<b>San Diego</b>				
Agriculture and Natural Resources	10.6	16.9	1.5	29.0	Agriculture and Natural Resources	—	—	—	—
Architecture/Environmental Design	11.4	25.3	8.0	44.7	Architecture/Environmental Design	—	—	3.1	3.1
Area Studies	—	—	—	—	Area Studies	1.0	3.6	1.2	5.8
Biological Sciences	17.6	19.3	4.9	41.8	Biological Sciences	35.6	26.8	18.1	80.5
Business and Management	12.4	89.1	5.6	107.1	Business and Management	7.5	57.2	27.2	91.9
Communications	13.1	4.6	—	17.7	Communications	26.7	29.5	9.0	65.2
Computer Sciences	9.4	15.5	2.0	26.9	Computer Sciences	8.6	20.6	12.4	41.6
Education	0.6	16.5	19.8	36.9	Education	4.8	32.6	91.3	128.7
Engineering	36.6	65.3	5.2	107.1	Engineering	11.5	41.8	17.5	70.8
Fine and Applied Arts	23.4	15.8	—	39.2	Fine and Applied Arts	37.2	61.2	14.4	112.8
Foreign Languages	8.6	2.2	—	10.8	Foreign Languages	42.8	26.8	4.4	74.0
Health Professions	—	—	—	—	Health Professions	6.5	10.9	46.4	63.8
Home Economics	2.7	6.1	1.5	10.3	Home Economics	2.1	4.6	1.0	7.7
Industrial Education	—	—	—	—	Industrial Education	—	—	—	—
Interdisciplinary	9.1	8.0	1.4	18.5	Interdisciplinary	3.1	13.5	4.5	21.1
Letters	37.5	13.4	2.5	53.4	Letters	79.5	70.7	20.1	170.3
Library Science	—	—	—	—	Library Science	—	—	—	—
Mathematics	43.2	8.6	3.6	55.4	Mathematics	29.8	18.1	12.0	59.9
Military Science	—	—	—	—	Military Science	—	—	—	—
Nursing	—	—	—	—	Nursing	7.1	24.5	6.6	38.2
Physical Education	12.0	9.5	1.3	22.8	Physical Education	5.4	17.7	6.2	29.3
Physical Science	35.1	21.0	2.4	58.5	Physical Science	45.7	32.1	18.2	96.0
Psychology	5.5	12.4	2.7	20.6	Psychology	13.4	38.2	21.8	73.4
Public Affairs and Services	—	1.4	1.2	2.6	Public Affairs and Services	4.8	33.9	21.6	60.3
Social Sciences	32.9	35.9	2.5	71.3	Social Sciences	49.2	98.4	27.2	174.8
All Categories	321.7	386.8	66.1	774.6	All Categories	422.3	662.7	384.2	1,469.2
<b>Sacramento</b>					<b>San Francisco</b>				
Agriculture and Natural Resources	—	—	—	—	Agriculture and Natural Resources	—	—	—	—
Architecture/Environmental Design	2.0	3.1	—	5.1	Architecture/Environmental Design	1.7	3.0	—	4.7
Area Studies	—	0.1	—	0.1	Area Studies	0.3	0.7	—	1.0
Biological Sciences	11.8	17.4	3.5	32.7	Biological Sciences	11.1	25.4	17.2	53.7
Business and Management	6.2	61.2	6.2	73.6	Business and Management	9.6	73.1	23.4	106.1
Communications	20.3	29.3	2.6	52.2	Communications	4.9	30.1	3.1	38.1
Computer Sciences	9.9	16.2	7.7	33.8	Computer Sciences	4.4	13.1	6.5	24.0
Education	6.1	66.6	65.5	138.2	Education	4.8	34.2	66.2	105.2
Engineering	9.4	33.9	10.0	53.3	Engineering	4.8	15.0	3.1	22.9
Fine and Applied Arts	31.9	46.5	5.0	83.4	Fine and Applied Arts	11.6	65.8	14.8	92.2
Foreign Languages	15.8	7.3	2.0	25.1	Foreign Languages	14.0	10.0	5.4	29.4
Health Professions	0.8	7.3	12.7	20.8	Health Professions	0.5	13.2	10.6	24.3
Home Economics	3.2	10.4	—	13.6	Home Economics	1.2	7.5	1.6	10.3
Industrial Education	—	—	—	—	Industrial Education	0.4	10.2	1.4	12.0
Interdisciplinary	23.6	4.5	2.0	30.1	Interdisciplinary	3.0	9.5	8.8	21.3
Letters	41.1	33.1	8.9	83.1	Letters	72.5	70.3	36.7	179.5
Library Science	—	—	—	—	Library Science	—	—	—	—
Mathematics	28.3	8.7	0.7	37.7	Mathematics	19.7	8.5	4.9	33.1
Military Science	—	—	—	—	Military Science	—	—	—	—
Nursing	6.4	21.7	2.7	30.8	Nursing	3.2	17.8	6.3	27.3
Physical Education	20.1	14.5	3.0	37.6	Physical Education	15.7	11.9	2.9	30.5
Physical Science	28.1	18.4	3.5	50.0	Physical Science	23.0	25.2	10.3	58.5
Psychology	4.7	17.8	7.7	30.2	Psychology	2.9	18.8	11.5	33.2
Public Affairs and Services	9.1	45.3	28.5	82.9	Public Affairs and Services	2.1	20.1	18.1	40.3
Social Sciences	42.2	70.4	15.1	127.7	Social Sciences	40.1	98.5	19.6	158.2
All Categories	321.0	533.7	187.3	1,042.0	All Categories	251.5	581.9	272.4	1,105.8

Table 160 (continued)

Full-Time Equivalent Faculty by Discipline Division and Level of Instruction, 2006-2007 Academic Year

Course Discipline	Lower Division	Upper Division	Graduate Division	Total	Course Discipline	Lower Division	Upper Division	Graduate Division	Total
<b>San Jose</b>					<b>Sonoma</b>				
Agriculture and Natural Resources	—	0.3	—	0.3	Agriculture and Natural Resources	—	—	—	—
Architecture/Environmental Design	1.9	2.6	5.8	10.3	Architecture/Environmental Design	—	—	—	—
Area Studies	3.9	1.8	—	5.7	Area Studies	—	—	—	—
Biological Sciences	15.8	13.4	6.7	35.9	Biological Sciences	6.3	7.7	1.7	15.7
Business and Management	10.9	79.7	9.6	100.2	Business and Management	5.2	21.2	1.5	27.9
Communications	4.5	18.1	2.1	24.7	Communications	2.0	4.4	—	6.4
Computer Sciences	4.3	21.6	5.4	31.3	Computer Sciences	3.0	2.0	—	5.0
Education	5.0	46.8	43.4	95.2	Education	0.8	21.6	13.7	36.1
Engineering	9.0	56.0	38.0	103.0	Engineering	1.0	0.2	—	1.2
Fine and Applied Arts	30.8	53.4	11.2	95.4	Fine and Applied Arts	9.0	17.7	—	26.7
Foreign Languages	11.3	7.8	1.4	20.5	Foreign Languages	3.5	3.9	—	7.4
Health Professions	2.2	17.0	12.0	31.2	Health Professions	—	—	—	—
Home Economics	2.8	10.6	2.4	15.8	Home Economics	—	—	—	—
Industrial Education	5.2	9.2	1.0	15.4	Industrial Education	—	—	—	—
Interdisciplinary	13.4	8.1	1.5	23.0	Interdisciplinary	16.5	17.4	—	33.9
Letters	69.1	49.1	12.5	130.7	Letters	19.6	11.3	1.9	32.8
Library Science	—	—	21.8	21.8	Library Science	—	—	—	—
Mathematics	31.0	14.4	4.3	49.7	Mathematics	17.7	3.8	—	21.5
Military Science	—	—	—	—	Military Science	—	—	—	—
Nursing	6.6	22.0	1.5	30.1	Nursing	3.0	6.3	5.7	15.0
Physical Education	33.5	11.7	4.2	49.4	Physical Education	5.8	8.3	0.6	14.7
Physical Science	31.9	29.2	10.3	71.4	Physical Science	8.4	7.9	—	16.3
Psychology	3.5	16.6	6.3	26.4	Psychology	1.1	12.9	0.1	14.1
Public Affairs and Services	5.1	21.5	22.7	49.3	Public Affairs and Services	1.1	5.1	—	6.2
Social Sciences	33.6	53.3	10.7	97.6	Social Sciences	12.8	39.2	3.3	55.3
All Categories	335.3	564.2	234.8	1,134.3	All Categories	116.8	190.9	28.5	336.2
<b>San Luis Obispo</b>					<b>Stanislaus</b>				
Agriculture and Natural Resources	33.1	61.4	7.9	102.4	Agriculture and Natural Resources	—	0.4	—	0.4
Architecture/Environmental Design	22.9	35.3	4.1	62.3	Architecture/Environmental Design	—	—	—	—
Area Studies	—	—	—	—	Area Studies	—	—	—	—
Biological Sciences	15.6	16.3	3.0	34.9	Biological Sciences	6.6	7.5	0.5	14.6
Business and Management	6.1	39.0	3.3	48.4	Business and Management	3.0	21.0	2.9	26.9
Communications	1.7	5.3	—	7.0	Communications	0.3	3.0	—	3.3
Computer Sciences	3.4	5.8	2.3	11.5	Computer Sciences	4.5	6.9	0.2	11.6
Education	1.6	14.9	7.8	24.3	Education	0.4	38.0	12.5	50.9
Engineering	54.5	107.3	16.0	177.8	Engineering	—	—	—	—
Fine and Applied Arts	17.4	18.3	—	35.7	Fine and Applied Arts	10.9	14.9	0.2	26.0
Foreign Languages	6.7	2.6	—	9.3	Foreign Languages	2.9	2.2	—	5.1
Health Professions	—	—	—	—	Health Professions	1.0	2.8	—	3.8
Home Economics	1.4	4.4	—	5.8	Home Economics	—	—	—	—
Industrial Education	3.6	16.8	0.9	21.3	Industrial Education	—	—	—	—
Interdisciplinary	4.6	4.7	—	9.3	Interdisciplinary	3.0	7.7	0.3	11.0
Letters	58.4	34.4	1.8	94.6	Letters	22.4	18.9	2.6	43.9
Library Science	—	—	—	—	Library Science	—	—	—	—
Mathematics	44.7	15.2	1.6	61.5	Mathematics	12.7	2.1	—	14.8
Military Science	—	—	—	—	Military Science	—	—	—	—
Nursing	—	—	—	—	Nursing	2.2	8.9	—	11.1
Physical Education	19.4	9.8	1.6	30.8	Physical Education	6.3	5.7	0.3	12.3
Physical Science	42.7	22.2	0.9	65.8	Physical Science	8.1	7.7	—	15.8
Psychology	5.4	14.3	2.3	22.0	Psychology	1.8	8.4	3.9	14.1
Public Affairs and Services	1.4	5.4	0.3	7.1	Public Affairs and Services	1.8	7.2	13.5	22.5
Social Sciences	22.2	31.1	2.4	55.7	Social Sciences	9.7	29.7	0.7	40.1
All Categories	366.8	464.5	56.2	887.5	All Categories	97.6	193.0	37.6	328.2
<b>San Marcos</b>					<b>Systemwide</b>				
Agriculture and Natural Resources	—	—	—	—	Agriculture and Natural Resources	65.4	132.6	17.6	215.6
Architecture/Environmental Design	—	—	—	—	Architecture/Environmental Design	39.9	69.4	21.0	130.3
Area Studies	—	—	—	—	Area Studies	16.7	28.2	4.1	49.0
Biological Sciences	5.5	9.6	2.5	17.6	Biological Sciences	273.3	285.3	107.6	666.2
Business and Management	2.0	34.6	2.3	38.9	Business and Management	160.2	992.0	165.7	1,317.9
Communications	4.9	9.8	—	14.7	Communications	166.8	332.8	34.4	534.0
Computer Sciences	1.8	6.0	1.1	8.9	Computer Sciences	115.1	204.2	71.7	391.0
Education	—	32.1	12.2	44.3	Education	61.5	730.3	836.9	1,628.7
Engineering	—	—	—	—	Engineering	205.8	503.3	139.9	849.0
Fine and Applied Arts	3.5	11.8	—	15.3	Fine and Applied Arts	485.9	761.0	108.5	1,355.4
Foreign Languages	9.0	5.4	0.6	15.0	Foreign Languages	245.0	158.0	28.4	431.4
Health Professions	—	—	—	—	Health Professions	34.6	157.9	151.0	343.5
Home Economics	—	—	—	—	Home Economics	32.3	99.3	18.7	150.3
Industrial Education	—	—	—	—	Industrial Education	14.4	59.7	9.1	83.2
Interdisciplinary	10.9	10.7	—	21.6	Interdisciplinary	172.5	217.2	27.4	417.1
Letters	11.5	7.9	3.3	22.7	Letters	818.9	720.9	180.7	1,720.5
Library Science	—	—	—	—	Library Science	10.1	—	22.8	32.9
Mathematics	8.7	5.1	0.3	14.1	Mathematics	547.1	191.0	56.3	794.4
Military Science	—	—	—	—	Military Science	—	—	—	—
Nursing	4.0	—	—	4.0	Nursing	73.1	266.7	72.6	412.4
Physical Education	5.2	2.7	—	7.9	Physical Education	298.9	252.7	40.4	592.0
Physical Science	6.1	4.5	—	10.6	Physical Science	474.6	338.0	85.9	898.5
Psychology	3.8	14.7	1.5	20.0	Psychology	100.4	370.1	120.9	591.4
Public Affairs and Services	—	—	—	—	Public Affairs and Services	57.5	337.3	250.0	644.8
Social Sciences	11.4	34.2	2.4	48.0	Social Sciences	624.4	1,163.4	185.3	1,973.1
All Categories	88.3	189.1	26.2	303.6	All Categories	5,094.4	8,371.3	2,756.9	16,222.6

Note: Campus figures were summed to produce systemwide totals and may differ from other tables due to rounding. A dash (—) indicates a zero total.  
 Source: Academic Planning Database (APDB).

Table 161

Student Credit Units by Discipline Division and Level of Instruction, Systemwide, 2006-2007 Academic Year

Course Discipline	Lower Division		Upper Division		Graduate Division		All Levels	
	Number	Percent	Number	Percent	Number	Percent	Number	Percent
Agriculture and Natural Resources	21,081	39.1	31,523	58.5	1,312	2.4	53,916	1.1
Architecture/Environmental Design	10,790	37.9	14,519	50.9	3,194	11.2	28,503	0.6
Area Studies	7,102	41.2	9,828	57.0	307	1.8	17,237	0.4
Biological Sciences	112,600	58.1	73,378	37.9	7,703	4.0	193,681	3.9
Business and Management	87,340	16.7	402,698	77.1	31,958	6.1	521,996	10.6
Communications	64,161	36.8	106,816	61.3	3,323	1.9	174,300	3.5
Computer Sciences	40,005	38.1	55,526	52.9	9,371	8.9	104,902	2.1
Education	24,389	6.5	191,852	51.2	158,446	42.3	374,687	7.6
Engineering	55,888	28.0	117,424	58.8	26,263	13.2	199,575	4.1
Fine and Applied Arts	155,447	47.0	165,861	50.2	9,366	2.8	330,674	6.7
Foreign Languages	76,234	67.8	33,137	29.5	2,987	2.7	112,358	2.3
Health Professions	16,836	17.0	60,038	60.6	22,249	22.4	99,123	2.0
Home Economics	17,623	32.0	34,560	62.7	2,968	5.4	55,151	1.1
Industrial Education	3,503	19.8	12,989	73.5	1,172	6.6	17,664	0.4
Interdisciplinary	62,449	46.7	68,588	51.2	2,814	2.1	133,851	2.7
Letters	296,098	54.9	224,509	41.6	18,900	3.5	539,507	11.0
Library Science	562	9.7	3	0.1	5,219	90.2	5,784	0.1
Mathematics	231,699	83.6	40,389	14.6	5,152	1.9	277,240	5.6
Military Science	966	47.7	1,057	52.2	3	0.1	2,026	0.0
Nursing	14,345	19.8	46,852	64.7	11,273	15.6	72,470	1.5
Physical Education	70,556	49.0	69,309	48.2	4,056	2.8	143,921	2.9
Physical Science	173,241	70.5	68,185	27.7	4,476	1.8	245,902	5.0
Psychology	66,795	29.1	151,771	66.0	11,361	4.9	229,927	4.7
Public Affairs and Services	28,117	14.3	123,201	62.7	45,273	23.0	196,591	4.0
Social Sciences	369,084	47.2	393,253	50.3	18,804	2.4	781,141	15.9
All Categories	2,006,911	40.9	2,497,266	50.8	407,950	8.3	4,912,127	100.0

Note: Student credit units have been annualized. A dash (—) indicates a zero total.  
 Source: Table 159 of this Statistical Abstract.

Full-Time Equivalent Faculty

Course Discipline	Lower Division		Upper Division		Graduate Division		All Levels	
	FTEF	SCU/FTEF	FTEF	SCU/FTEF	FTEF	SCU/FTEF	FTEF	SCU/FTEF
Agriculture and Natural Resources	65.4	322	132.6	238	17.6	75	215.6	250
Architecture/Environmental Design	39.9	270	69.4	209	21.0	152	130.3	219
Area Studies	16.7	425	28.2	349	4.1	75	49.0	352
Biological Sciences	273.3	412	285.3	257	107.6	72	666.2	291
Business and Management	160.2	545	992.0	406	165.7	193	1,317.9	396
Communications	166.8	385	332.8	321	34.4	97	534.0	326
Computer Sciences	115.1	348	204.2	272	71.7	131	391.0	268
Education	61.5	397	730.3	263	836.9	189	1,628.7	230
Engineering	205.8	272	503.3	233	139.9	188	849.0	235
Fine and Applied Arts	485.9	320	761.0	218	108.5	86	1,355.4	244
Foreign Languages	245.0	311	158.0	210	28.4	105	431.4	260
Health Professions	34.6	487	157.9	380	151.0	147	343.5	289
Home Economics	32.3	546	99.3	348	18.7	159	150.3	367
Industrial Education	14.4	243	59.7	218	9.1	129	83.2	212
Interdisciplinary	172.5	362	217.2	316	27.4	103	417.1	321
Letters	818.9	362	720.9	311	180.7	105	1,720.5	314
Library Science	10.1	56	0.0	0.0	22.8	229	32.9	176
Mathematics	547.1	424	191.0	211	56.3	92	794.4	349
Military Science	N/A	N/A	N/A	N/A	N/A	N/A	N/A	N/A
Nursing	73.1	196	266.7	176	72.6	155	412.4	176
Physical Education	298.9	236	252.7	274	40.4	100	592.0	243
Physical Science	474.6	365	338.0	202	85.9	52	898.5	274
Psychology	100.4	665	370.1	410	120.9	94	591.4	389
Public Affairs and Services	57.5	489	337.3	365	250.0	181	644.8	305
Social Sciences	624.4	591	1,163.4	338	185.3	101	1,973.1	396
All Categories	5,094.4	394	8,371.3	298	2,756.9	148	16,222.6	303

Note: A dash (—) indicates a zero total, whereas 0.0 indicates a total less than 0.1 but greater than 0.  
 Source: Table 159 and Table 160 of this Statistical Abstract.

Table 162

**Comparison of Budgeted and Reported Student Faculty Ratios,  
Systemwide from 1964-1965 College Year**

Fiscal Year	Budgeted			Reported		
	FTE Faculty	FTE Students	Student Faculty Ratio	FTE Faculty	FTE Students	Student Faculty Ratio
1964-65	6,420.8	104,610	16.29	6,197.7	108,810	17.56
1965-66	7,247.0	120,770	16.66	6,867.9	116,898	17.02
1966-67	8,146.4	130,335	16.00	7,778.7	131,128	16.86
1967-68	8,843.9	143,850	16.27	8,603.0	147,106	17.10
1968-69	10,000.0	160,995	16.10	9,622.8	166,830	17.34
1969-70	11,378.5	180,390	15.85	10,919.2	186,650	17.09
1970-71	12,338.2	200,710	16.27	11,692.9	203,700	17.42
1971-72	12,093.7	220,720	18.25	11,747.8	211,025	17.96
1972-73	12,698.8	227,800	17.94	12,315.3	220,266	17.89
1973-74	13,068.1	232,930	17.82	12,695.6	224,152	17.66
1974-75	12,973.3	230,970	17.80	12,770.8	227,002	17.78
1975-76	12,900.6	229,630	17.80	12,902.2	235,727	18.27
1976-77	13,427.0	239,000	17.80	13,157.9	231,251	17.70
1977-78	13,364.5	235,980	17.66	13,200.8	233,699	17.70
1978-79	13,431.0	236,670	17.63	13,090.2	228,939	17.49
1979-80	12,918.6	228,900	17.72	12,930.4	232,552	17.98
1980-81	13,034.2	230,330	17.67	13,075.5	238,646	18.25
1981-82	13,320.2	236,470	17.75	13,196.7	239,926	18.18
1982-83	13,400.8	239,450	17.87	13,265.3	240,990	18.17
1983-84	13,549.1	242,040	17.86	13,280.7	241,971	18.22
1984-85	13,537.4	242,260	17.90	13,484.2	242,295	17.97
1985-86	13,478.0	242,390	17.98	13,662.3	248,025	18.15
1986-87	13,686.9	247,375	18.07	13,761.2	251,878	18.30
1987-88	14,029.4	253,370	18.06	14,023.4	257,842	18.39
1988-89	14,599.0	260,599	17.85	14,383.3	266,289	18.51
1989-90	15,007.5	266,960	17.79	14,944.6	271,182	18.15
1990-91	15,446.3	274,010	17.74	15,098.8	278,003	18.41
1991-92		See note 4.		13,647.9	269,913	19.78
1992-93		See note 4.		12,637.4	257,978	20.41
1993-94		See note 4.		12,485.4	246,819	19.77
1994-95		See note 4.		12,695.3	246,251	19.40
1995-96		See note 4.		13,003.8	252,935	19.45
1996-97		See note 4.		13,330.9	261,543	19.62
1997-98		See note 4.		13,590.2	267,044	19.65
1998-99		See note 4.		14,156.0	273,429	19.32
1999-00		See note 4.		14,687.3	280,872	19.12
2000-01		See note 4.		15,148.1	289,523	19.11
2001-02		See note 4.		16,368.0	315,173	19.26
2002-03		See note 4.		16,592.1	330,016	19.89
2003-04		See note 4.		16,245.1	330,276	20.33
2004-05		See note 4.		15,434.4	320,106	20.74
2005-06		See note 4.		16,482.4	333,037	20.21
2006-07		See note 4.		17,113.0	352,192	20.58

## NOTES:

- Faculty data are for the college year and include positions for master's of social work, joint doctoral, Moss Landing Marine Laboratories, and off-campus centers.
- Prior to 1971-1972 reported faculty positions were calculated based upon the "past year" column of the salary supplement to the annual governor's budget with special adjustments made for graduate assistant positions. As of 1971-1972, reported faculty positions are as reported in the Academic Planning Database (APDB).
- Both budgeted and reported annual full-time equivalent students for college years 1964-1965 through 1970-1971 have been adjusted for the campuses on year-round operation by adding three-fourths of one summer quarter to one-fourth of the following summer quarter to produce a figure for the fiscal year.
- As of 1991-1992, budgets did not include projections of full-time equivalent students or faculty positions. Because of new budgeting procedures, we no longer determine budgeted faculty positions; thus, we do not have a budgeted student faculty ratio.
- Figures since 1999-2000 do not include Summer Arts, International Programs, or CalStateTEACH. Totals may not match other tables due to rounding.
- Full-time equivalent faculty (FTEF) totals are as reported in the Academic Planning Database (APDB). Figures for full-time equivalent students (FTES) are as reported in the Enrollment Reporting System, Student (ERSS).

**Table 163**  
**Reported Student Faculty Ratios, College Year**

Campus	FTE Faculty	FTE Students	Student Faculty Ratio
<b>2004-2005</b>			
Bakersfield	346.2	6,474	18.70
Channel Islands	117.7	1,706	14.49
Chico	656.0	14,161	21.59
Dominguez Hills	406.2	8,796	21.66
East Bay (formerly Hayward)	548.3	11,683	21.31
Fresno	809.1	16,986	20.99
Fullerton	1,111.6	24,395	21.95
Humboldt	377.9	6,859	18.15
Long Beach	1,328.9	26,816	20.18
Los Angeles	798.5	16,531	20.70
Maritime Academy	78.1	872	11.17
Monterey Bay	151.4	3,578	23.63
Northridge*	1,112.1	23,485	21.12
Pomona	736.8	16,754	22.74
Sacramento	1,027.6	21,717	21.13
San Bernardino	597.0	12,637	21.17
San Diego	1,363.5	27,157	19.92
San Francisco	1,083.3	23,209	21.42
San Jose	1,045.3	21,140	20.22
San Luis Obispo	886.5	16,264	18.35
San Marcos	257.4	5,854	22.75
Sonoma	288.1	6,778	23.53
Stanislaus	307.0	6,255	20.37
Systemwide	15,434.4	320,106	20.74
<b>2005-2006</b>			
Bakersfield	360.5	6,521	18.09
Channel Islands	142.0	2,123	14.95
Chico	685.3	14,540	21.22
Dominguez Hills	407.1	8,718	21.42
East Bay (formerly Hayward)	614.3	11,220	18.26
Fresno	787.3	17,464	22.18
Fullerton	1,283.0	27,187	21.19
Humboldt	412.0	7,000	16.99
Long Beach	1,452.9	27,769	19.11
Los Angeles	827.3	16,459	19.89
Maritime Academy	76.9	953	12.40
Monterey Bay	154.2	3,504	22.73
Northridge	1,110.7	25,160	22.65
Pomona	813.0	17,641	21.70
Sacramento	1,093.8	22,305	20.39
San Bernardino	632.2	13,556	21.44
San Diego	1,515.9	27,638	18.23
San Francisco	1,117.3	23,611	21.13
San Jose	1,114.9	22,508	20.19
San Luis Obispo	968.2	17,431	18.00
San Marcos	283.3	6,269	22.13
Sonoma	315.6	6,728	21.32
Stanislaus	314.8	6,733	21.39
Systemwide	16,482.4	333,037	20.21
<b>2006-2007</b>			
Bakersfield	347.0	6,806	19.61
Channel Islands	158.8	2,617	16.47
Chico	718.5	15,048	20.94
Dominguez Hills	395.3	9,038	22.86
East Bay (formerly Hayward)	593.7	11,978	20.17
Fresno	878.9	18,399	20.93
Fullerton	1,340.9	28,335	21.13
Humboldt	367.0	7,030	19.15
Long Beach	1,515.6	29,655	19.57
Los Angeles	917.8	17,469	19.03
Maritime Academy	78.1	992	12.71
Monterey Bay	160.0	3,577	22.36
Northridge	1,199.6	27,269	22.73
Pomona	843.9	18,697	22.15
Sacramento	1,141.7	23,234	20.35
San Bernardino	674.0	14,275	21.18
San Diego	1,535.2	29,417	19.16
San Francisco	1,172.8	24,936	21.26
San Jose	1,158.2	23,882	20.62
San Luis Obispo	936.7	17,934	19.15
San Marcos	314.6	7,210	22.92
Sonoma	336.4	7,312	21.74
Stanislaus	328.2	7,083	21.58
Systemwide	17,113.0	352,192	20.58

Note: Because of new budgeting procedures, we no longer determine budgeted faculty positions; thus, we do not have a budgeted student faculty ratio. Figures do not include Summer Arts, International Programs, or CalStateTEACH. Totals may not match other tables due to rounding.

\*Annualized FTE student figures for CSU Northridge include students who matriculated at CSU Northridge but took their courses at CSU Channel Islands. Source: Academic Planning Database (APDB) and Enrollment Reporting System, Student (ERSS).

# SECTION VI (*Instruction*)

## INDEX

### A

#### Academic Year (*Fall, Winter, Spring Only*)

- Full-Time Equivalent Faculty (FTEF)
  - by Instruction Level, Campus, and Discipline, pg. [273](#)
- Full-Time Equivalent Students (FTES)
  - by Instruction Level and Student Level, pg. [262](#)
  - by Level of Instruction, from 1964-65, pg. [260](#)
- Student Credit Units, Systemwide
  - by Level of Instruction and Discipline, pg. [277](#)
- Student Credit Units by Campus
  - by Level of Instruction and Discipline, pg. [269](#)

#### **B has no entries**

### C

#### Campus Enrollment

- Academic Year (*Fall, Winter, Spring Only*)
  - FTES by Level of Instruction, pg. [260](#)
  - FTE Faculty by Level of Instruction, pg. [273](#)
  - Student Credit Units by Campus/Discipline, pg. [269](#)
- College Year (Summer, Fall, Winter, Spring)
  - FTES by Level of Instruction, pg. [261](#)

#### College Year (*Summer, Fall, Winter, Spring*)

- Full-Time Equivalent Students (FTES)
  - by Instruction Level and Campus, pg. [261](#)
- Student/Faculty Ratio
  - by Campus, from CY 2004-05, pg. [279](#)
  - Systemwide, from CY 1964-65, pg. [278](#)

#### **D has no entries**

### E

#### Employees, CSU

- Full-Time Equivalent Faculty (FTEF)
  - by Campus, Discipline, and Instruction Level, pg. [273](#)
  - Student Credit Units by Discipline, pg. [277](#)
  - Student/Faculty Ratios, from CY 2004-05, pg. [279](#)

#### Enrollment, CSU Historic

- FTES by Academic Year (*Fall, Winter, Spring Only*)
  - by Level of Instruction, from 1964-65, pg. [260](#)
  - by Level of Instruction and Student Level, pg. [262](#)
- FTES by College Year
  - by Level of Instruction, from 1964-65, pg. [261](#)
- FTES by Summer Quarter
  - by Level of Instruction and Student Level, pg. [263](#)

### F

#### Full-Time Equivalent Faculty (FTEF)

- by Campus
  - with Level of Instruction and Discipline, pg. [273](#)
- Student/Faculty Ratio
  - by Campus, from CY 2004-05, pg. [279](#)
  - Systemwide, from College Year 1964-65, pg. [278](#)
- Student Credit Units Per FTEF
  - with Level of Instruction and Discipline, pg. [277](#)

#### Full-Time Equivalent Students (FTES)

- by Campus
  - by Instruction Level, Academic Year, pg. [260](#)
  - by Instruction Level, College Year, pg. [261](#)
- by Instruction Level and Student Level
  - by Academic Year, from 1995-96, pg. [262](#)
  - by Summer Quarter, from 1995-96, pg. [263](#)
- Student/Faculty Ratio
  - by Campus, from CY 2004-05, pg. [279](#)
  - Systemwide, from CY 1964-65, pg. [278](#)

#### **G through H have no entries**

### I

#### Instruction Level

- Academic Year, Full-Time Equivalent Students
  - by Campus, with Systemwide from AY 1964-65, pg. [260](#)
  - by Campus and Course Discipline, pg. [269](#)
  - by Student Level, from AY 1995-96, pg. [262](#)
- Academic Year by Campus and Discipline
  - Full-Time Equivalent Faculty (FTEF), pg. [273](#)
- Academic Year by Discipline
  - SCU and Full-Time Equivalent Faculty (FTEF), pg. [277](#)
  - Student Credit Units (SCU), pg. [277](#)
- College Year, Full-Time Equivalent Students
  - by Campus, with Systemwide from CY 1964-65, pg. [261](#)
- Summer Quarter, from 1995-96
  - FTES by Student Level, pg. [263](#)

#### **J through R have no entries**

### S

#### Student/Faculty Ratios

- College Year, from 1964-65, pg. [278](#)

#### Student Credit Units

- Academic Year
  - by Instruction Level, Campus, and Discipline, pg. [269](#)

#### **T through Z have no entries**

## End of Instruction Index