

Introduction

The California State University has awarded more higher education degrees than any other college or university in California over the past few years. Since 1975-1976, about half of all baccalaureate degrees conferred in the state have been granted by the CSU. Since the establishment of the system in 1960-1961, the CSU has conferred more than 2.5 million degrees: 2,097,094 baccalaureates, 460,618 master's, and 935 joint doctorates.

Degrees Conferred

Degree conferrals grew steadily from the inception of the system (fall 1960) until the 1984-1985 college year, increasing by over 300 percent. During the latter 1980s, awards were relatively stable; 53,000 to 58,000 students a year received diplomas. By 1992-1993 the annual number of degrees awarded peaked at 68,137. Within six years, the 1992-1993 figure was surpassed and the 68,539 degrees granted in 1998-1999 set a new high. There were 89,050 degrees granted in 2006-2007. This is the highest number of degrees in the history of the CSU and represents a 17% increase in five years. Baccalaureate awards for 2006-2007 numbered 70,887 or 80 percent of all degrees granted. Graduate degrees were conferred on 18,163 CSU students.

Minority Representation

The number of underrepresented minorities obtaining CSU undergraduate degrees has shown impressive growth during the past two decades. Baccalaureate awards for non-White students more than tripled between 1986-1987 and 2006-2007, growing from 9,744 to 30,498. The number of White, non-Latinos receiving baccalaureate degrees dropped about 7 percent during the same time period: 30,112 degrees were awarded in 1986-1987 compared to 28,039 conferrals in 2006-2007. Bachelor's degree awards for White, non-Latino students reached their highest level in 1991-1992 when 33,979 degrees were conferred. Between 1986-1987 and 2006-2007, non-White students also demonstrated marked growth in the number of graduate degrees earned. As with undergraduate degrees, graduate degree awards for non-White students more than tripled while overall growth for graduate degree conferrals doubled.

Degree Disciplines

Historically, the bachelor's degree awarded most often in the CSU has been business and management. This pattern prevailed in 2006-2007 as well. One-fifth of all undergraduates earned a baccalaureate in this major (15,426 students). Social sciences degrees (8,168) comprised 12 percent and the interdisciplinary studies (6,607) comprised about 10 percent of all baccalaureates earned during this period. Psychology degrees (5,102) and degrees in public affairs and services (4,488) were awarded next most often. Degrees awarded in the combined social sciences and psychology academic disciplines (i.e., academic disciplines concerned with the behavioral sciences) constitute about 20 percent of all undergraduate degrees earned in 2006-2007.

Graduate students earned a degree in education most often during 2006-2007. More than 30 percent of all graduate degree awards (5,628) were in this academic area. Education traditionally has been the most popular postbaccalaureate degree earned because of the CSU's mission in preparing K-12 educators. Graduate degree conferrals for business and management (2,351), also popular, represented 13 percent of the total. Graduate awards for the public affairs and services discipline numbered 1,996 or about 11 percent of all graduate degrees awarded, while the health professions graduated 1,472 students or about 8 percent of the total.

Note: Statistics in this section do not include information about Special Program degree conferrals.

Figure 21
Total Degrees Conferred by California Higher Education Segment,
1965-1966 to 2006-2007

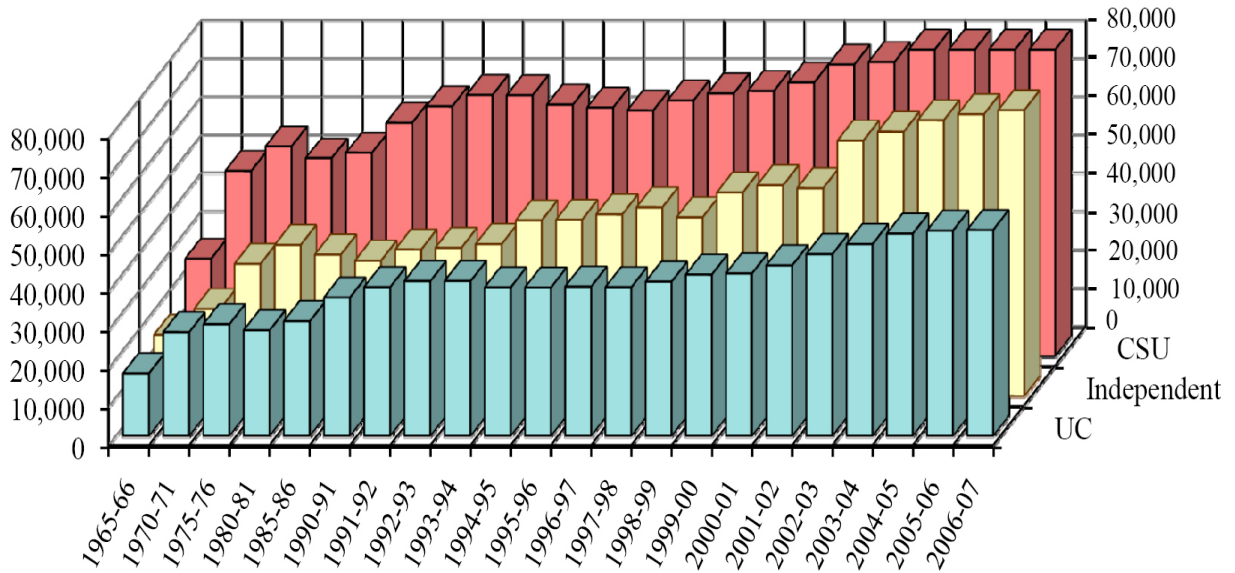


Figure 22
Growth in Baccalaureate Degree Awards for White and Non-White Ethnicity Groups,
1986-1987 to 2006-2007

Percent Growth

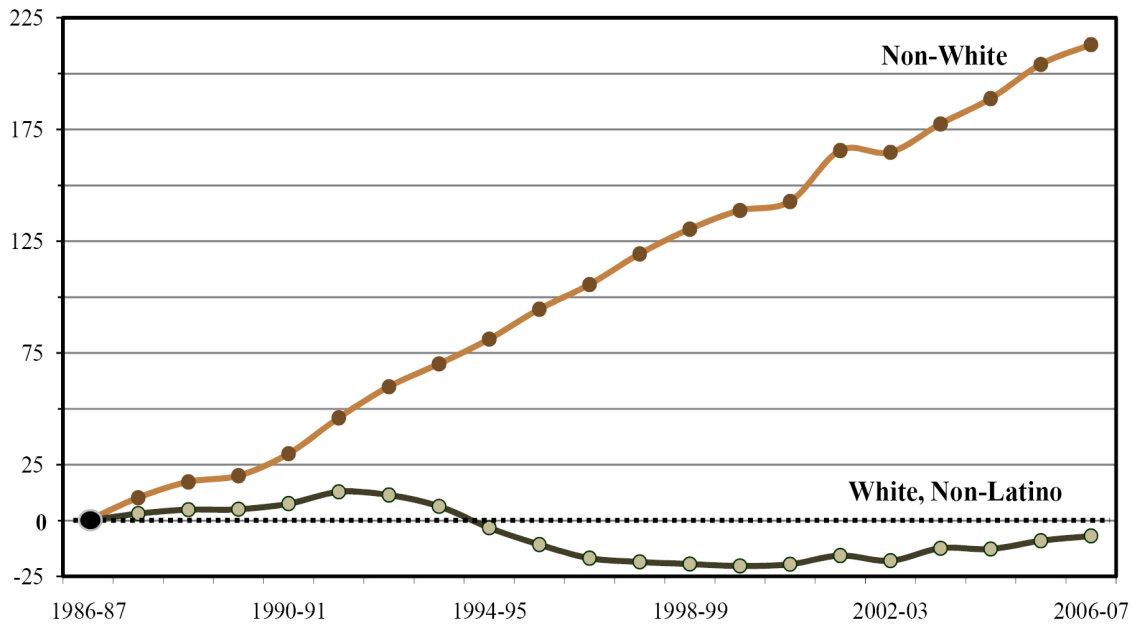


Figure 23
Growth in Baccalaureate Degree Awards for Underrepresented Minorities,
1986-1987 to 2006-2007

Percent Growth

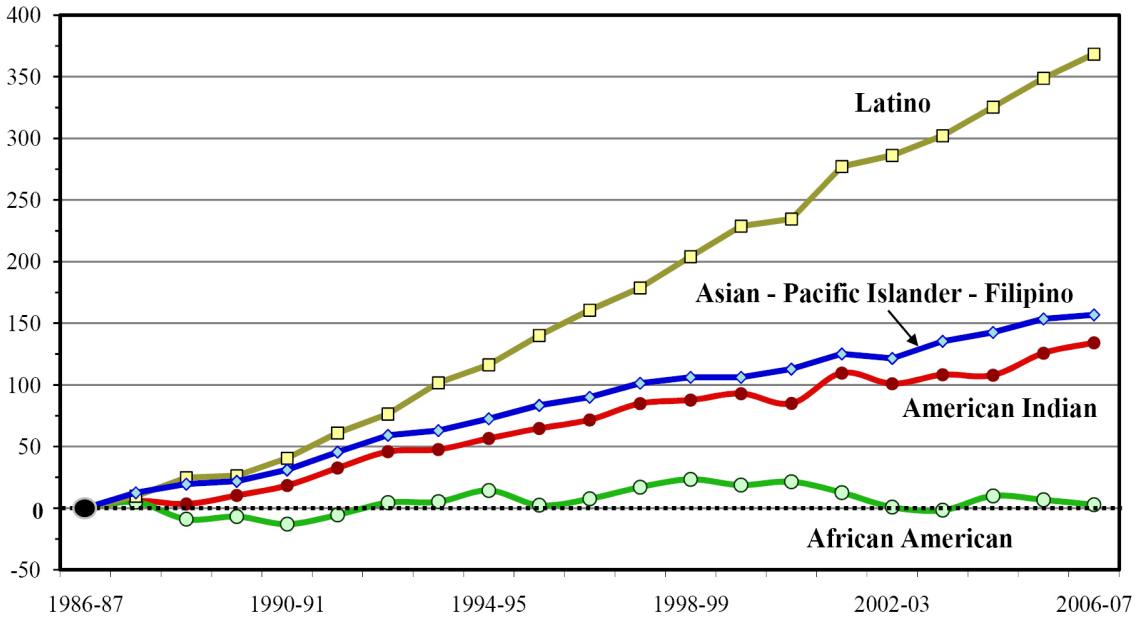


Table 145
Degrees Conferred by California Colleges and Universities by Segment, from 1965-1966

Year	California State University		University of California		Independent Colleges and Universities		State Total
	Number	Percent	Number	Percent	Number	Percent	
Baccalaureate Degrees							
1965-66	21,533	51.8	10,415	25.1	9,589	23.1	41,537
1970-71	40,651	56.1	18,164	25.1	13,608	18.8	72,423
1975-76	44,598	53.3	20,954	25.1	18,085	21.6	83,637
1980-81	41,993	50.7	19,733	23.8	21,057	25.4	82,783
1985-86	44,292	51.4	22,109	25.6	19,851	23.0	86,252
1990-91	50,352	51.9	27,172	28.0	19,544	20.1	97,068
1991-92	53,897	51.6	29,648	28.4	20,935	20.0	104,480
1992-93	55,665	51.6	31,130	28.9	21,026	19.5	107,821
1993-94	55,358	51.3	30,776	28.5	21,679	20.1	107,813
1994-95	53,507	49.8	29,700	27.6	24,340	22.6	107,547
1995-96	52,730	49.2	29,721	27.7	24,728	23.1	107,179
1996-97	52,213	48.5	29,772	27.6	25,704	23.9	107,689
1997-98	53,496	49.0	29,608	27.1	26,051	23.9	109,155
1998-99	54,814	49.5	31,166	28.2	24,701	22.3	110,681
1999-00	55,603	47.7	32,741	28.1	28,169	24.2	116,513
2000-01	56,983	47.9	33,067	27.8	28,927	24.3	118,977
2001-02	61,463	48.7	34,716	27.5	29,900	23.7	126,079
2002-03	61,712	45.4	37,125	27.3	37,080	27.3	135,917
2003-04	65,741	46.3	38,579	27.2	37,729	26.6	142,049
2004-05	66,768	45.3	40,862	27.7	39,826	27.0	147,456
2005-06	69,350	45.8	41,640	27.5	40,475	26.7	151,465
2006-07	70,887	46.3	41,587	27.2	40,660	26.6	153,134
Master's Degrees							
1965-66	3,795	30.0	4,284	33.9	4,547	36.0	12,626
1970-71	7,567	36.4	5,541	26.7	7,675	36.9	20,783
1975-76	10,088	33.0	6,009	19.6	14,505	47.4	30,602
1980-81	9,545	30.8	5,569	18.0	15,853	51.2	30,967
1985-86	8,645	29.4	5,608	19.1	15,131	51.5	29,384
1990-91	10,487	34.3	6,311	20.7	13,749	45.0	30,547
1991-92	11,264	34.3	6,499	19.8	15,030	45.8	32,793
1992-93	12,447	36.3	6,417	18.7	15,414	45.0	34,278
1993-94	12,678	36.3	6,645	19.0	15,581	44.6	34,904
1994-95	12,080	32.5	6,109	16.5	18,935	51.0	37,124
1995-96	12,099	32.8	6,120	16.6	18,660	50.6	36,879
1996-97	11,841	32.3	6,245	17.0	18,619	50.7	36,705
1997-98	13,133	33.0	6,258	15.7	20,452	51.3	39,843
1998-99	13,688	35.0	6,279	16.1	19,152	49.0	39,119
1999-00	13,544	32.2	6,462	15.3	22,112	52.5	42,118
2000-01	14,327	32.8	6,437	14.7	22,973	52.5	43,737
2001-02	14,537	33.6	6,918	16.0	21,843	50.4	43,298
2002-03	14,990	30.6	7,359	15.0	26,600	54.3	48,949
2003-04	16,782	31.5	8,367	15.7	28,207	52.9	53,356
2004-05	17,167	31.4	8,703	15.9	28,796	52.7	54,666
2005-06	18,269	32.4	8,454	15.0	29,603	52.6	56,326
2006-07	18,095	31.8	8,405	14.8	30,372	53.4	56,872
Doctorate Degrees							
1965-66	—	—	1,536	46.1	1,796	53.9	3,332
1970-71	4	0.1	3,226	70.2	1,363	29.7	4,593
1975-76	7	0.2	2,068	54.0	1,754	45.8	3,829
1980-81	6	0.1	2,111	47.2	2,356	52.7	4,473
1985-86	12	0.3	2,065	53.3	1,794	46.3	3,871
1990-91	23	0.5	2,476	56.1	1,911	43.3	4,410
1991-92	21	0.4	2,530	53.9	2,140	45.6	4,691
1992-93	25	0.5	2,675	55.6	2,110	43.9	4,810
1993-94	37	0.7	2,827	55.4	2,236	43.8	5,100
1994-95	33	0.6	2,814	53.5	2,412	45.9	5,259
1995-96	30	0.6	2,724	52.5	2,431	46.9	5,185
1996-97	35	0.6	2,789	48.7	2,902	50.7	5,726
1997-98	82	1.5	2,775	51.1	2,569	47.3	5,426
1998-99	37	0.7	2,632	49.7	2,627	49.6	5,296
1999-00	40	0.7	2,729	50.1	2,675	49.1	5,444
2000-01	36	0.6	2,729	48.0	2,915	51.3	5,680
2001-02	44	0.9	2,689	52.9	2,354	46.3	5,087
2002-03	53	0.9	2,764	48.2	2,919	50.9	5,736
2003-04	69	1.2	2,926	49.5	2,918	49.3	5,913
2004-05	53	0.8	3,016	47.3	3,305	51.9	6,374
2005-06	61	0.9	3,276	48.6	3,398	50.5	6,735
2006-07	68	1.0	3,560	49.9	3,503	49.1	7,131

Note: The "—" is equivalent to zero. Above figures do not include Candidate in Philosophy recipients at the University of California. California State University doctorate degrees are conferred jointly with the University of California. Additional information can be found on the World Wide Web using the Integrated Postsecondary Education Data System (IPEDS) site at www.nces.ed.gov/ipeds or the California Postsecondary Education Commission (CPEC) site at www.cpec.ca.gov.

Source: California State University Enrollment Reporting System, Degrees; University of California Statistical Summary of Students and Staff, Degrees Conferred; California Postsecondary Education Commission Degree Type Data Abstract; and The Association of Independent California Colleges and Universities, IPEDS Degree Completion Surveys.

Table 146

Degrees Conferred by Campus, from 1992-1993

Campus	1992-93	1993-94	1994-95	1995-96	1996-97	1997-98	1998-99	1999-00	2000-01	2001-02	2002-03	2003-04	2004-05	2005-06	2006-07
Undergraduate Degrees															
Bakersfield	791	801	849	818	804	928	816	959	955	1,086	1,151	1,193	1,243	1,350	1,291
Channel Islands	—	—	—	—	—	—	—	—	—	—	2	142	346	423	402
Chico	3,026	3,008	2,852	2,678	2,636	2,453	2,677	2,401	2,696	2,943	3,045	3,128	2,724	2,936	2,900
Dominguez Hills ¹	1,471	1,598	1,744	1,693	1,728	1,735	1,806	1,651	1,703	1,746	1,775	1,849	1,716	1,962	1,819
East Bay ²	1,976	2,193	2,347	2,257	2,243	2,245	2,201	2,277	2,257	2,450	2,437	2,396	2,419	2,067	2,407
Fresno	3,137	3,090	2,985	3,042	2,992	2,902	2,725	2,833	2,858	2,909	2,735	2,922	3,069	3,320	3,384
Fullerton	4,289	4,193	3,963	3,936	4,027	4,312	4,121	4,522	4,517	5,239	5,058	5,636	5,761	5,779	6,295
Humboldt	1,176	1,347	1,311	1,321	1,389	1,386	1,380	1,374	1,398	1,456	1,355	1,376	1,396	1,389	1,374
Long Beach	4,607	4,593	4,232	4,228	3,980	3,874	4,078	4,158	4,352	4,859	5,055	5,194	5,790	5,911	6,110
Los Angeles	2,718	2,272	2,391	2,483	2,373	2,368	2,408	2,500	2,489	2,871	2,764	2,638	2,220	2,696	3,097
Maritime Academy	—	—	—	—	74	68	53	69	88	91	104	118	114	123	148
Monterey Bay	—	—	—	—	68	147	229	232	366	366	433	490	598	602	598
Northridge	4,216	4,219	3,961	3,802	3,561	3,783	3,936	3,921	4,387	4,824	5,073	4,944	5,488	5,564	5,682
Pomona	2,719	2,650	2,685	2,578	2,529	2,767	2,402	2,585	2,763	2,808	2,935	3,200	3,207	3,451	3,768
Sacramento	4,291	4,327	4,030	3,537	3,599	3,734	3,894	3,721	4,087	4,230	4,223	4,557	4,659	4,953	4,953
San Bernardino	1,712	1,926	1,923	2,007	1,892	1,955	2,079	2,176	2,097	2,276	2,331	2,531	2,684	2,657	2,595
San Diego	5,392	5,034	4,752	4,644	4,673	4,783	4,928	5,201	5,083	5,390	5,816	6,181	6,325	6,476	6,433
San Francisco	3,879	3,692	3,659	3,917	3,721	3,799	4,240	3,987	4,098	4,469	4,529	4,574	4,865	4,879	5,230
San Jose	4,364	4,271	3,975	3,816	4,090	4,021	4,099	3,956	3,951	4,072	3,867	3,854	4,259	4,257	4,043
San Luis Obispo	3,319	3,411	3,080	3,056	2,824	3,146	3,339	3,545	2,840	3,509	3,169	4,677	3,374	3,952	3,613
San Marcos	260	417	552	557	606	644	776	878	1,333	1,087	1,201	1,342	1,459	1,523	1,598
Sonoma	1,396	1,327	1,249	1,318	1,360	1,400	1,446	1,447	1,398	1,541	1,372	1,431	1,598	1,576	1,688
Stanislaus	926	989	967	1,042	1,044	1,046	1,181	1,210	1,267	1,241	1,282	1,368	1,454	1,504	1,459
Total	55,665	55,358	53,507	52,730	52,213	53,496	54,814	55,603	56,983	61,463	61,712	65,741	66,768	69,350	70,887
Master's Degrees															
Bakersfield	265	290	241	227	169	229	193	236	233	222	298	308	354	280	333
Channel Islands	—	—	—	—	—	—	—	—	—	—	—	—	—	10	21
Chico	297	329	140	498	299	201	247	314	289	276	305	365	344	352	346
Dominguez Hills ¹	649	758	729	719	617	812	948	956	1,011	820	822	1,095	1,108	1,028	954
East Bay ²	551	680	668	625	645	914	897	901	1,002	1,079	1,107	1,226	1,184	1,114	1,142
Fresno	525	626	575	569	543	545	573	580	583	553	647	563	795	738	670
Fullerton	802	770	776	777	714	798	763	889	1,011	1,087	1,036	1,242	1,222	1,323	1,430
Humboldt	143	137	121	145	126	132	119	139	111	122	140	148	171	184	146
Long Beach	978	1,090	1,022	934	961	938	1,181	1,099	1,210	1,138	892	1,128	1,433	1,581	1,531
Los Angeles	877	782	696	725	760	721	793	843	860	832	936	980	735	1,188	1,128
Maritime Academy	—	—	—	—	—	—	—	—	—	—	—	—	—	—	—
Monterey Bay	—	—	—	—	—	—	3	14	15	15	19	25	44	30	67
Northridge	828	824	722	797	685	712	834	857	798	891	1,069	1,048	1,218	1,292	1,623
Pomona	324	323	303	308	315	301	307	301	322	379	346	329	355	403	467
Sacramento	909	912	940	833	787	781	1,226	910	945	891	1,024	963	1,202	1,114	824
San Bernardino	541	523	546	457	514	558	668	685	748	902	689	795	693	882	775
San Diego	1,435	1,400	1,501	1,378	1,601	2,178	1,441	1,558	1,539	1,683	1,830	1,732	1,677	1,637	1,773
San Francisco	1,283	1,295	1,234	1,229	1,163	1,347	1,404	1,187	1,445	1,298	1,385	1,714	1,615	1,654	1,498
San Jose	1,437	1,308	1,279	1,284	1,212	1,273	1,431	1,414	1,541	1,614	1,625	2,066	2,189	2,474	2,312
San Luis Obispo	312	303	275	301	294	316	255	287	287	255	316	534	273	335	417
San Marcos	—	—	—	13	121	86	77	42	102	155	179	117	147	242	198
Sonoma	178	206	190	150	196	174	190	188	157	184	182	222	206	198	228
Stanislaus	113	122	122	130	119	117	138	144	118	141	143	182	202	210	212
Total	12,447	12,678	12,080	12,099	11,841	13,133	13,688	13,544	14,327	14,537	14,990	16,782	17,167	18,269	18,095
Joint Doctoral Degrees³															
Fresno	—	—	3	9	8	11	6	7	9	8	13	2	9	7	7
Los Angeles	—	1	5	—	—	—	3	—	—	—	—	—	—	—	—
San Diego ⁴	19	25	18	21	21	68	28	32	27	36	40	50	44	49	46
San Francisco	6	11	7	—	6	3	—	1	—	—	—	17	—	5	15
Total	25	37	33	30	35	82	37	40	36	44	53	69	53	61	68

Note: Consortium Degrees are reported with campus data. The “—” is equivalent to zero.

¹The CSU Statewide Nursing Program degrees are reported with Dominguez Hills beginning in 1988-1989.

²CSU Hayward became CSU East Bay in college year 2004-2005.

³Joint Doctoral degrees represent from 0.03% to 0.12% of total degrees.

⁴San Diego's 1997-1998 Joint Doctoral degrees total reflects a one-time increase due to a change in the reporting cycle.

Table 147

Degrees Conferred by Discipline Division, from 1992-1993

Discipline Division	1992-93	1993-94	1994-95	1995-96	1996-97	1997-98	1998-99	1999-00	2000-01	2001-02	2002-03	2003-04	2004-05	2005-06	2006-07
Undergraduate Degrees															
Agriculture and Natural Resources	815	938	963	990	942	1,017	1,018	1,105	1,010	1,104	1,052	1,061	1,053	1,098	982
Architecture and Environmental Design	494	434	455	448	316	349	319	312	288	382	343	428	422	527	539
Area Studies	95	95	97	109	90	93	85	100	82	84	126	108	100	128	135
Biological Sciences	1,544	1,593	1,664	1,832	2,033	2,178	2,189	2,075	1,897	1,919	1,905	1,802	1,930	2,075	2,298
Business and Management	13,180	13,031	12,351	11,497	11,343	11,366	11,354	11,970	12,606	13,336	13,698	15,239	14,794	14,936	15,426
Communications	3,149	2,997	2,643	2,523	2,395	2,441	2,470	2,608	2,788	3,228	3,306	3,555	3,642	3,823	3,981
Computer and Information Sciences	1,178	1,086	1,065	1,023	997	1,056	1,077	1,272	1,517	1,765	1,977	2,092	1,609	1,378	1,175
Education	3,171	3,045	3,037	3,151	3,170	3,104	3,518	3,477	3,637	3,858	3,716	3,970	3,897	4,202	4,267
Engineering	3,919	3,604	3,559	3,402	3,187	3,058	3,045	2,818	2,644	2,878	2,945	3,099	3,298	3,792	3,701
Fine and Applied Arts	2,378	2,398	2,292	2,306	2,347	2,452	2,498	2,531	2,635	3,084	3,111	3,442	3,697	3,804	3,912
Foreign Languages	525	535	504	556	510	596	667	610	588	590	608	571	624	682	706
Health Professions	2,455	2,600	2,701	2,763	2,913	2,977	2,816	2,646	2,449	2,436	2,283	2,387	2,537	2,809	3,085
Home Economics	816	740	656	696	575	627	675	694	631	711	710	651	724	825	947
Interdisciplinary Studies	5,587	5,481	5,229	5,133	5,167	5,343	6,048	6,670	7,127	7,457	7,367	7,770	7,783	7,248	6,607
Letters	3,187	3,009	2,961	2,862	2,784	2,862	3,036	2,899	3,058	3,367	3,540	3,702	3,901	4,064	4,143
Mathematics	529	501	494	477	418	443	462	456	436	507	456	510	651	650	641
Physical Sciences	590	587	580	599	614	625	525	518	496	500	498	492	516	598	584
Psychology	3,675	3,959	3,847	3,823	3,864	3,949	3,975	3,843	3,787	4,247	4,126	4,308	4,518	4,916	5,102
Public Affairs and Services	2,771	2,970	2,940	3,014	3,107	3,182	3,338	3,314	3,343	3,549	3,523	3,586	3,924	4,090	4,488
Social Sciences	5,607	5,755	5,469	5,526	5,441	5,778	5,699	5,685	5,964	6,461	6,422	6,968	7,148	7,705	8,168
Total, All Programs	55,665	55,358	53,507	52,730	52,213	53,496	54,814	55,603	56,983	61,463	61,712	65,741	66,768	69,350	70,887
Master's Degrees															
Agriculture and Natural Resources	89	97	66	76	75	82	74	84	78	108	120	86	95	101	89
Architecture and Environmental Design	80	102	74	93	98	90	76	70	78	74	89	111	98	109	97
Area Studies	28	31	22	41	27	38	39	30	35	35	29	31	26	39	37
Biological Sciences	201	164	168	206	197	184	222	219	240	235	241	228	252	259	266
Business and Management	2,076	1,968	1,996	1,784	1,858	2,345	2,306	2,341	2,470	2,394	2,530	2,838	2,343	2,433	2,351
Communications	123	148	128	131	115	155	179	155	148	154	161	210	232	274	225
Computer and Information Sciences	295	331	253	326	266	255	308	389	489	504	478	644	808	772	693
Education	3,417	3,519	3,252	3,195	3,256	3,558	4,073	3,950	4,494	4,933	4,923	5,426	5,258	5,565	5,604
Engineering	876	857	751	793	683	727	753	682	715	676	733	1,062	1,219	1,291	1,272
Fine and Applied Arts	433	372	383	302	374	368	387	326	327	347	362	324	409	354	356
Foreign Languages	108	90	79	80	80	103	106	97	113	115	105	95	131	147	146
Health Professions	838	1,161	1,037	1,040	1,072	1,154	1,153	1,275	1,203	1,129	1,190	1,291	1,272	1,421	1,451
Home Economics	99	88	96	97	90	77	78	92	88	84	105	108	83	120	152
Interdisciplinary Studies	197	213	179	223	192	209	226	242	208	204	212	240	219	239	236
Letters	928	928	867	885	790	999	868	865	833	803	757	905	1,027	1,016	966
Library Science	172	153	171	173	143	127	163	152	211	180	216	235	308	338	456
Mathematics	133	101	113	129	110	123	121	132	113	154	123	155	198	270	258
Physical Sciences	142	145	145	173	139	141	115	143	120	135	118	140	155	183	180
Psychology	486	517	440	488	508	461	518	441	449	444	448	487	500	505	493
Public Affairs and Services	1,167	1,194	1,262	1,224	1,253	1,365	1,327	1,329	1,347	1,292	1,473	1,536	1,799	2,079	1,996
Social Sciences	559	499	598	640	515	572	596	530	568	537	577	630	735	754	771
Total, All Programs	12,447	12,678	12,080	12,099	11,841	13,133	13,688	13,544	14,327	14,537	14,990	16,782	17,167	18,269	18,095
Joint Doctoral Degrees															
Biological Sciences	4	4	6	2	3	10	4	7	4	3	7	5	9	9	4
Education	12	20	19	14	17	34	19	15	18	18	25	38	21	20	24
Engineering	—	—	—	1	2	4	1	—	—	—	—	2	2	3	1
Health Professions	—	—	—	—	2	6	3	2	—	5	8	6	2	14	21
Physical Sciences	2	6	1	3	—	2	1	—	1	3	2	3	7	3	3
Psychology	7	7	7	10	11	23	7	12	9	13	9	12	12	7	11
Social Sciences	—	—	—	—	—	3	2	4	4	2	2	3	—	5	4
Total, All Programs	25	37	33	30	35	82	37	40	36	44	53	69	53	61	68

Note: CSU Statewide Nursing Program degrees are included in Health Professions beginning in 1988-1989. The "—" is equivalent to zero.

Table 148
Undergraduate and Graduate Degrees Conferred, from 1935-1936

Year	Undergraduate	Graduate		Total
		Master's	Joint Doctoral	
1935-36	1,417	—	—	1,417
1936-37	1,273	—	—	1,273
1937-38	1,427	—	—	1,427
1938-39	1,553	—	—	1,553
1939-40	1,790	—	—	1,790
1940-41	1,835	—	—	1,835
1941-42	1,873	—	—	1,873
1942-43	1,598	—	—	1,598
1943-44	1,011	—	—	1,011
1944-45	687	—	—	687
1945-46	814	—	—	814
1946-47	1,271	—	—	1,271
1947-48	1,871	—	—	1,871
1948-49	3,038	—	—	3,038
1949-50	5,344	106	—	5,450
1950-51	5,660	329	—	5,989
1951-52	5,691	434	—	6,125
1952-53	5,272	653	—	5,925
1953-54	5,423	752	—	6,175
1954-55	5,840	975	—	6,815
1955-56	6,878	1,270	—	8,148
1956-57	8,709	1,447	—	10,156
1957-58	9,737	1,761	—	11,498
1958-59	10,770	1,668	—	12,438
1959-60	11,045	1,911	—	12,956
1960-61	12,034	2,062	—	14,096
1961-62	13,281	2,283	—	15,564
1962-63	14,935	2,407	—	17,342
1963-64	17,258	2,730	—	19,988
1964-65	20,056	3,109	—	23,165
1965-66	21,533	3,795	—	25,328
1966-67	23,858	4,247	1	28,106
1967-68	27,271	4,881	—	32,152
1968-69	32,558	5,996	—	38,554
1969-70	37,409	6,815	—	44,224
1970-71	40,651	7,567	4	48,222
1971-72	43,178	8,183	7	51,368
1972-73	46,699	8,284	7	54,990
1973-74	48,018	8,708	6	56,732
1974-75	44,818	9,469	6	54,293
1975-76	44,598	10,088	7	54,693
1976-77	43,291	9,944	8	53,243
1977-78	43,465	10,146	4	53,615
1978-79	41,842	9,701	3	51,546
1979-80	42,122	9,732	6	51,860
1980-81	41,993	9,545	6	51,544
1981-82	43,711	9,755	6	53,472
1982-83	42,956	9,627	11	52,594
1983-84	44,274	9,614	14	53,902
1984-85	44,292	9,179	8	53,479
1985-86	44,292	8,645	12	52,949
1986-87	44,374	8,510	27	52,911
1987-88	46,446	8,960	19	55,425
1988-89	47,459	9,381	14	56,854
1989-90	48,105	9,850	12	57,967
1990-91	50,130	10,464	23	60,617
1991-92	53,897	11,264	21	65,182
1992-93	55,665	12,447	25	68,137
1993-94	55,358	12,678	37	68,073
1994-95	53,507	12,080	33	65,620
1995-96	52,730	12,099	30	64,859
1996-97	52,213	11,841	35	64,089
1997-98	53,496	13,133	82	66,711
1998-99	54,814	13,688	37	68,539
1999-00	55,603	13,544	40	69,187
2000-01	56,983	14,327	36	71,346
2001-02	61,463	14,537	44	76,044
2002-03	61,712	14,990	53	76,755
2003-04	65,741	16,782	69	82,592
2004-05	66,768	17,167	53	83,988
2005-06	69,350	18,269	61	87,680
2006-07	70,887	18,095	68	89,050

Note: Total includes the CSU Statewide Nursing Program degrees beginning in 1988-1989. The “—” is equivalent to zero.

Table 149

Systemwide Degrees Conferred by Discipline Division

2005-2006

Discipline Division	Undergraduate		Graduate		Total	
	Number	Percent	Number	Percent	Number	Percent
Agriculture and Natural Resources	1,098	1.6	101	0.6	1,199	1.4
Architecture and Environmental Design	527	0.8	109	0.6	636	0.7
Area Studies	128	0.2	39	0.2	167	0.2
Biological Sciences	2,075	3.0	268	1.5	2,343	2.7
Business and Management	14,936	21.5	2,433	13.3	17,369	19.8
Communications	3,823	5.5	274	1.5	4,097	4.7
Computer and Information Science	1,378	2.0	772	4.2	2,150	2.5
Education	4,202	6.1	5,585	30.5	9,787	11.2
Engineering	3,792	5.5	1,294	7.1	5,086	5.8
Fine and Applied Arts	3,804	5.5	354	1.9	4,158	4.7
Foreign Languages	682	1.0	147	0.8	829	0.9
Health Professions	2,809	4.1	1,435	7.8	4,244	4.8
Home Economics	825	1.2	120	0.7	945	1.1
Interdisciplinary Studies	7,248	10.5	239	1.3	7,487	8.5
Letters	4,064	5.9	1,016	5.5	5,080	5.8
Library Science	—	—	338	1.8	338	0.4
Mathematics	650	0.9	270	1.5	920	1.0
Physical Sciences	598	0.9	186	1.0	784	0.9
Psychology	4,916	7.1	512	2.8	5,428	6.2
Public Affairs and Services	4,090	5.9	2,079	11.3	6,169	7.0
Social Sciences	7,705	11.1	759	4.1	8,464	9.7
Total, All Programs	69,350	100.0	18,330	100.0	87,680	100.0

Note: Graduate totals include Joint Doctorate awards. The “—” is equivalent to zero.

2006-2007

Discipline Division	Undergraduate		Graduate		Total	
	Number	Percent	Number	Percent	Number	Percent
Agriculture and Natural Resources	982	1.4	89	0.5	1,071	1.2
Architecture and Environmental Design	539	0.8	97	0.5	636	0.7
Area Studies	135	0.2	37	0.2	172	0.2
Biological Sciences	2,298	3.2	270	1.5	2,568	2.9
Business and Management	15,426	21.8	2,351	12.9	17,777	20.0
Communications	3,981	5.6	225	1.2	4,206	4.7
Computer and Information Science	1,175	1.7	693	3.8	1,868	2.1
Education	4,267	6.0	5,628	31.0	9,895	11.1
Engineering	3,701	5.2	1,273	7.0	4,974	5.6
Fine and Applied Arts	3,912	5.5	356	2.0	4,268	4.8
Foreign Languages	706	1.0	146	0.8	852	1.0
Health Professions	3,085	4.4	1,472	8.1	4,557	5.1
Home Economics	947	1.3	152	0.8	1,099	1.2
Interdisciplinary Studies	6,607	9.3	236	1.3	6,843	7.7
Letters	4,143	5.8	966	5.3	5,109	5.7
Library Science	—	—	456	2.5	456	0.5
Mathematics	641	0.9	258	1.4	899	1.0
Physical Sciences	584	0.8	183	1.0	767	0.9
Psychology	5,102	7.2	504	2.8	5,606	6.3
Public Affairs and Services	4,488	6.3	1,996	11.0	6,484	7.3
Social Sciences	8,168	11.5	775	4.3	8,943	10.0
Total, All Programs	70,887	100.0	18,163	100.0	89,050	100.0

Note: Graduate totals include Joint Doctorate awards. The “—” is equivalent to zero.

Table 150

Degrees Conferred by Level, Discipline Division and Campus, 2006-2007

Discipline Division	Undergraduate	Graduate	Total	Discipline Division	Undergraduate	Graduate	Total
Bakersfield				Dominguez Hills			
Agriculture and Natural Resources	—	—	—	Agriculture and Natural Resources	—	—	—
Architecture/Environmental Design	—	—	—	Architecture/Environmental Design	—	—	—
Area Studies	—	—	—	Area Studies	—	—	—
Biological Sciences	30	—	30	Biological Sciences	24	4	28
Business and Management	223	42	265	Business and Management	334	101	435
Communications	61	—	61	Communications	107	—	107
Computer and Information Science	16	—	16	Computer and Information Science	13	—	13
Education	64	178	242	Education	35	471	506
Engineering	—	—	—	Engineering	1	33	34
Fine and Applied Arts	22	—	22	Fine and Applied Arts	30	—	30
Foreign Languages	16	—	16	Foreign Languages	26	—	26
Health Professions	64	10	74	Health Professions	175	77	252
Home Economics	—	—	—	Home Economics	—	30	30
Interdisciplinary Studies	318	—	318	Interdisciplinary Studies	411	6	417
Letters	71	1	72	Letters	65	86	151
Library Science	—	—	—	Library Science	—	—	—
Mathematics	14	3	17	Mathematics	17	8	25
Physical Sciences	20	1	21	Physical Sciences	6	—	6
Psychology	93	19	112	Psychology	139	50	189
Public Affairs and Services	117	61	178	Public Affairs and Services	232	74	306
Social Sciences	162	18	180	Social Sciences	204	14	218
Total, All Programs	1,291	333	1,624	Total, All Programs	1,819	954	2,773
Channel Islands				East Bay			
Agriculture and Natural Resources	—	—	—	Agriculture and Natural Resources	—	—	—
Architecture/Environmental Design	—	—	—	Architecture/Environmental Design	—	—	—
Area Studies	—	—	—	Area Studies	4	—	4
Biological Sciences	29	—	29	Biological Sciences	110	7	117
Business and Management	72	10	82	Business and Management	754	400	1,154
Communications	—	—	—	Communications	62	14	76
Computer and Information Science	7	—	7	Computer and Information Science	75	90	165
Education	—	11	11	Education	54	248	302
Engineering	—	—	—	Engineering	13	—	13
Fine and Applied Arts	37	—	37	Fine and Applied Arts	93	11	104
Foreign Languages	4	—	4	Foreign Languages	12	—	12
Health Professions	—	—	—	Health Professions	159	59	218
Home Economics	—	—	—	Home Economics	—	—	—
Interdisciplinary Studies	106	—	106	Interdisciplinary Studies	305	10	315
Letters	25	—	25	Letters	91	43	134
Library Science	—	—	—	Library Science	—	—	—
Mathematics	4	—	4	Mathematics	28	51	79
Physical Sciences	1	—	1	Physical Sciences	16	13	29
Psychology	78	—	78	Psychology	232	—	232
Public Affairs and Services	—	—	—	Public Affairs and Services	139	163	302
Social Sciences	39	—	39	Social Sciences	260	33	293
Total, All Programs	402	21	423	Total, All Programs	2,407	1,142	3,549
Chico				Fresno			
Agriculture and Natural Resources	79	—	79	Agriculture and Natural Resources	140	9	149
Architecture/Environmental Design	—	1	1	Architecture/Environmental Design	—	—	—
Area Studies	13	—	13	Area Studies	—	—	—
Biological Sciences	73	4	77	Biological Sciences	67	5	72
Business and Management	424	22	446	Business and Management	539	69	608
Communications	194	8	202	Communications	145	10	155
Computer and Information Science	103	49	152	Computer and Information Science	17	8	25
Education	170	66	236	Education	195	236	431
Engineering	219	13	232	Engineering	185	12	197
Fine and Applied Arts	135	15	150	Fine and Applied Arts	154	9	163
Foreign Languages	25	—	25	Foreign Languages	32	9	41
Health Professions	151	23	174	Health Professions	338	157	495
Home Economics	40	6	46	Home Economics	17	—	17
Interdisciplinary Studies	315	9	324	Interdisciplinary Studies	483	1	484
Letters	181	9	190	Letters	195	38	233
Library Science	—	—	—	Library Science	—	—	—
Mathematics	15	3	18	Mathematics	31	9	40
Physical Sciences	30	4	34	Physical Sciences	47	3	50
Psychology	149	32	181	Psychology	188	13	201
Public Affairs and Services	210	46	256	Public Affairs and Services	159	60	219
Social Sciences	374	36	410	Social Sciences	452	29	481
Total, All Programs	2,900	346	3,246	Total, All Programs	3,384	677	4,061

Note: Graduate totals include Joint Doctorate awards. CSU Hayward became CSU East Bay in college year 2004-2005. The “—” is equivalent to zero.

Table 150 (continued)
Degrees Conferred by Level, Discipline Division and Campus, 2006-2007

Discipline Division	Undergraduate	Graduate	Total	Discipline Division	Undergraduate	Graduate	Total
Fullerton				Los Angeles			
Agriculture and Natural Resources	—	—	—	Agriculture and Natural Resources	—	—	—
Architecture/Environmental Design	—	—	—	Architecture/Environmental Design	—	—	—
Area Studies	50	9	59	Area Studies	12	6	18
Biological Sciences	153	17	170	Biological Sciences	92	9	101
Business and Management	1,593	200	1,793	Business and Management	640	71	711
Communications	861	43	904	Communications	66	14	80
Computer and Information Science	66	110	176	Computer and Information Science	94	20	114
Education	646	491	1,137	Education	291	462	753
Engineering	73	58	131	Engineering	94	59	153
Fine and Applied Arts	413	56	469	Fine and Applied Arts	135	49	184
Foreign Languages	58	10	68	Foreign Languages	35	8	43
Health Professions	272	110	382	Health Professions	172	93	265
Home Economics	—	—	—	Home Economics	25	28	53
Interdisciplinary Studies	344	20	364	Interdisciplinary Studies	235	2	237
Letters	265	55	320	Letters	146	67	213
Library Science	—	—	—	Library Science	—	—	—
Mathematics	44	33	77	Mathematics	40	14	54
Physical Sciences	18	14	32	Physical Sciences	21	27	48
Psychology	351	32	383	Psychology	234	27	261
Public Affairs and Services	523	46	569	Public Affairs and Services	439	128	567
Social Sciences	565	126	691	Social Sciences	326	44	370
Total, All Programs	6,295	1,430	7,725	Total, All Programs	3,097	1,128	4,225
Humboldt				Maritime Academy			
Agriculture and Natural Resources	117	30	147	Agriculture and Natural Resources	—	—	—
Architecture/Environmental Design	—	—	—	Architecture/Environmental Design	—	—	—
Area Studies	—	—	—	Area Studies	—	—	—
Biological Sciences	121	11	132	Biological Sciences	—	—	—
Business and Management	55	18	73	Business and Management	15	—	15
Communications	41	—	41	Communications	—	—	—
Computer and Information Science	14	—	14	Computer and Information Science	—	—	—
Education	43	10	53	Education	—	—	—
Engineering	20	—	20	Engineering	55	—	55
Fine and Applied Arts	139	2	141	Fine and Applied Arts	—	—	—
Foreign Languages	25	—	25	Foreign Languages	—	—	—
Health Professions	48	—	48	Health Professions	—	—	—
Home Economics	—	—	—	Home Economics	—	—	—
Interdisciplinary Studies	244	8	252	Interdisciplinary Studies	67	—	67
Letters	111	7	118	Letters	—	—	—
Library Science	—	—	—	Library Science	—	—	—
Mathematics	23	—	23	Mathematics	—	—	—
Physical Sciences	45	—	45	Physical Sciences	—	—	—
Psychology	89	17	106	Psychology	—	—	—
Public Affairs and Services	29	27	56	Public Affairs and Services	—	—	—
Social Sciences	210	16	226	Social Sciences	11	—	11
Total, All Programs	1,374	146	1,520	Total, All Programs	148	—	148
Long Beach				Monterey Bay			
Agriculture and Natural Resources	—	—	—	Agriculture and Natural Resources	—	—	—
Architecture/Environmental Design	—	—	—	Architecture/Environmental Design	—	—	—
Area Studies	37	8	45	Area Studies	—	—	—
Biological Sciences	218	12	230	Biological Sciences	—	—	—
Business and Management	1,092	149	1,241	Business and Management	95	9	104
Communications	263	—	263	Communications	86	—	86
Computer and Information Science	—	20	20	Computer and Information Science	—	—	—
Education	449	306	755	Education	—	17	17
Engineering	306	102	408	Engineering	—	—	—
Fine and Applied Arts	514	56	570	Fine and Applied Arts	26	—	26
Foreign Languages	82	15	97	Foreign Languages	—	—	—
Health Professions	344	173	517	Health Professions	—	—	—
Home Economics	246	10	256	Home Economics	—	—	—
Interdisciplinary Studies	465	6	471	Interdisciplinary Studies	158	35	193
Letters	611	89	700	Letters	117	—	117
Library Science	—	—	—	Library Science	—	—	—
Mathematics	49	30	79	Mathematics	4	—	4
Physical Sciences	24	8	32	Physical Sciences	—	—	—
Psychology	429	10	439	Psychology	—	—	—
Public Affairs and Services	370	494	864	Public Affairs and Services	48	6	54
Social Sciences	611	43	654	Social Sciences	64	—	64
Total, All Programs	6,110	1,531	7,641	Total, All Programs	598	67	665

Note: Graduate totals include Joint Doctorate awards. CSU Hayward became CSU East Bay in college year 2004-2005. The “—” is equivalent to zero.

Table 150 (continued)
Degrees Conferred by Level, Discipline Division and Campus, 2006-2007

Discipline Division	Undergraduate	Graduate	Total	Discipline Division	Undergraduate	Graduate	Total
Northridge				San Bernardino			
Agriculture and Natural Resources	—	—	—	Agriculture and Natural Resources	—	—	—
Architecture/Environmental Design	—	—	—	Architecture/Environmental Design	—	—	—
Area Studies	—	—	—	Area Studies	—	—	—
Biological Sciences	196	24	220	Biological Sciences	46	4	50
Business and Management	1,301	82	1,383	Business and Management	614	91	705
Communications	423	25	448	Communications	106	9	115
Computer and Information Science	129	16	145	Computer and Information Science	32	18	50
Education	374	740	1,114	Education	96	396	492
Engineering	163	174	337	Engineering	—	—	—
Fine and Applied Arts	345	37	382	Fine and Applied Arts	80	—	80
Foreign Languages	35	7	42	Foreign Languages	49	10	59
Health Professions	173	163	336	Health Professions	130	26	156
Home Economics	168	35	203	Home Economics	22	—	22
Interdisciplinary Studies	487	9	496	Interdisciplinary Studies	324	6	330
Letters	433	64	497	Letters	130	31	161
Library Science	—	—	—	Library Science	—	—	—
Mathematics	34	14	48	Mathematics	61	11	72
Physical Sciences	25	12	37	Physical Sciences	45	—	45
Psychology	484	13	497	Psychology	339	39	378
Public Affairs and Services	101	140	241	Public Affairs and Services	191	116	307
Social Sciences	811	68	879	Social Sciences	330	18	348
Total, All Programs	5,682	1,623	7,305	Total, All Programs	2,595	775	3,370
Pomona				San Diego			
Agriculture and Natural Resources	160	9	169	Agriculture and Natural Resources	—	—	—
Architecture/Environmental Design	192	49	241	Architecture/Environmental Design	—	14	14
Area Studies	—	—	—	Area Studies	15	14	29
Biological Sciences	177	12	189	Biological Sciences	216	40	256
Business and Management	1,350	90	1,440	Business and Management	1,367	377	1,744
Communications	71	—	71	Communications	277	54	331
Computer and Information Science	87	9	96	Computer and Information Science	56	73	129
Education	39	158	197	Education	381	421	802
Engineering	659	57	716	Engineering	275	101	376
Fine and Applied Arts	140	—	140	Fine and Applied Arts	361	30	391
Foreign Languages	18	—	18	Foreign Languages	82	15	97
Health Professions	—	—	—	Health Professions	245	210	455
Home Economics	69	—	69	Home Economics	54	15	69
Interdisciplinary Studies	235	5	240	Interdisciplinary Studies	399	39	438
Letters	85	23	108	Letters	473	51	524
Library Science	—	—	—	Library Science	—	—	—
Mathematics	35	15	50	Mathematics	58	41	99
Physical Sciences	39	5	44	Physical Sciences	54	39	93
Psychology	173	11	184	Psychology	564	64	628
Public Affairs and Services	—	10	10	Public Affairs and Services	689	133	822
Social Sciences	239	14	253	Social Sciences	867	88	955
Total, All Programs	3,768	467	4,235	Total, All Programs	6,433	1,819	8,252
Sacramento				San Francisco			
Agriculture and Natural Resources	—	—	—	Agriculture and Natural Resources	—	—	—
Architecture/Environmental Design	36	—	36	Architecture/Environmental Design	56	—	56
Area Studies	1	—	1	Area Studies	3	—	3
Biological Sciences	155	15	170	Biological Sciences	200	42	242
Business and Management	1,057	101	1,158	Business and Management	1,058	197	1,255
Communications	403	12	415	Communications	326	14	340
Computer and Information Science	73	39	112	Computer and Information Science	66	34	100
Education	344	206	550	Education	364	389	753
Engineering	255	96	351	Engineering	129	14	143
Fine and Applied Arts	227	12	239	Fine and Applied Arts	472	55	527
Foreign Languages	41	22	63	Foreign Languages	71	40	111
Health Professions	231	81	312	Health Professions	181	159	340
Home Economics	66	—	66	Home Economics	127	3	130
Interdisciplinary Studies	401	13	414	Interdisciplinary Studies	280	34	314
Letters	188	52	240	Letters	428	211	639
Library Science	—	—	—	Library Science	—	—	—
Mathematics	47	1	48	Mathematics	22	13	35
Physical Sciences	35	6	41	Physical Sciences	31	30	61
Psychology	269	14	283	Psychology	489	56	545
Public Affairs and Services	575	111	686	Public Affairs and Services	206	134	340
Social Sciences	549	43	592	Social Sciences	721	88	809
Total, All Programs	4,953	824	5,777	Total, All Programs	5,230	1,513	6,743

Note: Graduate totals include Joint Doctorate awards. The “—” is equivalent to zero.

Table 150 (continued)
Degrees Conferred by Level, Discipline Division and Campus, 2006-2007

Discipline Division	Undergraduate	Graduate	Total	Discipline Division	Undergraduate	Graduate	Total
San Jose				Sonoma			
Agriculture and Natural Resources	—	—	—	Agriculture and Natural Resources	—	—	—
Architecture/Environmental Design	31	17	48	Architecture/Environmental Design	—	—	—
Area Studies	—	—	—	Area Studies	—	—	—
Biological Sciences	76	38	114	Biological Sciences	50	7	57
Business and Management	1,274	162	1,436	Business and Management	333	27	360
Communications	159	22	181	Communications	86	—	86
Computer and Information Science	126	182	308	Computer and Information Science	27	—	27
Education	318	442	760	Education	73	77	150
Engineering	339	443	782	Engineering	—	5	5
Fine and Applied Arts	276	24	300	Fine and Applied Arts	99	—	99
Foreign Languages	24	8	32	Foreign Languages	16	—	16
Health Professions	315	91	406	Health Professions	43	40	83
Home Economics	16	25	41	Home Economics	—	—	—
Interdisciplinary Studies	102	19	121	Interdisciplinary Studies	250	9	259
Letters	179	86	265	Letters	85	14	99
Library Science	—	456	456	Library Science	—	—	—
Mathematics	15	7	22	Mathematics	17	—	17
Physical Sciences	38	16	54	Physical Sciences	20	—	20
Psychology	217	50	267	Psychology	190	26	216
Public Affairs and Services	251	150	401	Public Affairs and Services	52	10	62
Social Sciences	287	74	361	Social Sciences	347	13	360
Total, All Programs	4,043	2,312	6,355	Total, All Programs	1,688	228	1,916
San Luis Obispo				Stanislaus			
Agriculture and Natural Resources	475	41	516	Agriculture and Natural Resources	11	—	11
Architecture/Environmental Design	224	16	240	Architecture/Environmental Design	—	—	—
Area Studies	—	—	—	Area Studies	—	—	—
Biological Sciences	142	13	155	Biological Sciences	72	—	72
Business and Management	549	36	585	Business and Management	290	47	337
Communications	40	—	40	Communications	64	—	64
Computer and Information Science	101	20	121	Computer and Information Science	40	—	40
Education	245	135	380	Education	76	62	138
Engineering	915	106	1,021	Engineering	—	—	—
Fine and Applied Arts	121	—	121	Fine and Applied Arts	49	—	49
Foreign Languages	13	—	13	Foreign Languages	17	—	17
Health Professions	—	—	—	Health Professions	44	—	44
Home Economics	97	—	97	Home Economics	—	—	—
Interdisciplinary Studies	108	—	108	Interdisciplinary Studies	284	5	289
Letters	133	11	144	Letters	60	12	72
Library Science	—	—	—	Library Science	—	—	—
Mathematics	44	3	47	Mathematics	22	—	22
Physical Sciences	55	5	60	Physical Sciences	12	—	12
Psychology	79	8	87	Psychology	107	16	123
Public Affairs and Services	57	23	80	Public Affairs and Services	100	64	164
Social Sciences	215	—	215	Social Sciences	211	6	217
Total, All Programs	3,613	417	4,030	Total, All Programs	1,459	212	1,671
San Marcos				Systemwide			
Agriculture and Natural Resources	—	—	—	Agriculture and Natural Resources	982	89	1,071
Architecture/Environmental Design	—	—	—	Architecture/Environmental Design	539	97	636
Area Studies	—	—	—	Area Studies	135	37	172
Biological Sciences	51	6	57	Biological Sciences	2,298	270	2,568
Business and Management	397	50	447	Business and Management	15,426	2,351	17,777
Communications	140	—	140	Communications	3,981	225	4,206
Computer and Information Science	33	5	38	Computer and Information Science	1,175	693	1,868
Education	10	106	116	Education	4,267	5,628	9,895
Engineering	—	—	—	Engineering	3,701	1,273	4,974
Fine and Applied Arts	44	—	44	Fine and Applied Arts	3,912	356	4,268
Foreign Languages	25	2	27	Foreign Languages	706	146	852
Health Professions	—	—	—	Health Professions	3,085	1,472	4,557
Home Economics	—	—	—	Home Economics	947	152	1,099
Interdisciplinary Studies	286	—	286	Interdisciplinary Studies	6,607	236	6,843
Letters	71	16	87	Letters	4,143	966	5,109
Library Science	—	—	—	Library Science	—	456	456
Mathematics	17	2	19	Mathematics	641	258	899
Physical Sciences	2	—	2	Physical Sciences	584	183	767
Psychology	209	7	216	Psychology	5,102	504	5,606
Public Affairs and Services	—	—	—	Public Affairs and Services	4,488	1,996	6,484
Social Sciences	313	4	317	Social Sciences	8,168	775	8,943
Total, All Programs	1,598	198	1,796	Total, All Programs	70,887	18,163	89,050

Note: Graduate totals include Joint Doctorate awards. The “—” is equivalent to zero.

Table 151

Undergraduate Degrees Granted by Campus and Ethnic Group, Systemwide

2006-2007

Campus	African American	American Indian	Asian American	Filipino	Mexican American	Other Latino	Pacific Islander	White	Unknown	Nonresident Alien	Total
Bakersfield	53	17	45	28	355	83	4	555	131	20	1,291
Channel Islands	6	8	9	10	86	17	1	209	55	1	402
Chico	45	39	91	18	183	63	11	2,010	372	68	2,900
Dominguez Hills	458	10	108	54	447	200	16	287	195	44	1,819
East Bay	202	14	415	126	174	111	28	685	334	318	2,407
Fresno	115	17	306	—	687	107	50	1,338	639	125	3,384
Fullerton	202	23	1,057	228	1,096	409	28	2,316	673	263	6,295
Humboldt	32	21	38	7	85	43	5	817	312	14	1,374
Long Beach	309	36	863	280	993	399	47	2,196	702	285	6,110
Los Angeles	186	8	548	88	929	379	8	362	327	262	3,097
Maritime Academy	3	4	13	3	7	5	4	99	8	2	148
Monterey Bay	23	4	14	3	161	30	5	279	74	5	598
Northridge	363	25	450	177	843	517	23	1,893	1,034	357	5,682
Pomona	121	8	1,004	210	662	226	13	918	379	227	3,768
Sacramento	272	50	656	194	441	200	39	2,391	645	65	4,953
San Bernardino	238	24	122	53	647	171	17	953	283	87	2,595
San Diego	264	42	487	392	1,097	302	40	2,960	698	151	6,433
San Francisco	241	42	1,058	342	334	309	36	1,680	832	356	5,230
San Jose	163	20	1,105	322	452	152	21	1,131	492	185	4,043
San Luis Obispo	35	22	297	89	217	88	10	2,353	473	29	3,613
San Marcos	50	18	66	76	214	66	13	833	220	42	1,598
Sonoma	20	23	41	18	100	57	7	1,166	236	20	1,688
Stanislaus	39	15	117	27	239	100	4	608	290	20	1,459
Total	3,440	490	8,910	2,745	10,449	4,034	430	28,039	9,404	2,946	70,887

Systemwide from 1975-1976

1975-76	1,764	510	1,862	67	1,742	321	244	28,958	8,054	1,076	44,598
1976-77	1,645	390	1,832	124	1,575	361	211	28,003	8,186	964	43,291
1977-78	1,656	408	1,858	160	1,763	387	264	27,847	8,143	979	43,465
1978-79	1,752	417	1,984	271	1,747	424	224	26,744	7,199	1,080	41,842
1979-80	1,767	370	2,077	388	1,832	473	217	26,326	7,423	1,249	42,122
1980-81	1,689	417	2,271	409	1,737	572	128	24,699	8,542	1,529	41,993
1981-82	1,715	444	2,492	389	1,839	634	166	25,767	8,544	1,721	43,711
1982-83	1,606	479	2,700	424	1,784	738	158	26,959	6,567	1,541	42,956
1983-84	1,695	673	3,076	534	1,881	926	178	28,772	4,983	1,556	44,274
1984-85	1,629	634	3,445	519	1,896	942	185	29,418	4,156	1,468	44,292
1985-86	1,569	546	3,775	607	1,953	1,061	169	29,614	3,607	1,391	44,292
1986-87	1,469	477	3,952	605	2,032	1,060	149	30,112	3,088	1,430	44,374
1987-88	1,556	500	4,352	759	2,280	1,112	183	31,045	3,264	1,395	46,446
1988-89	1,519	434	4,532	921	2,692	1,163	171	31,582	2,963	1,482	47,459
1989-90	1,621	444	4,619	941	2,679	1,225	173	31,632	3,233	1,538	48,105
1990-91	1,740	415	4,841	1,160	3,040	1,304	162	32,392	3,347	1,729	50,130
1991-92	1,948	451	5,414	1,246	3,501	1,477	189	33,979	3,910	1,782	53,897
1992-93	2,142	498	5,813	1,493	3,975	1,483	179	33,551	4,580	1,951	55,665
1993-94	2,169	502	5,969	1,499	4,445	1,794	198	32,031	4,811	1,940	55,358
1994-95	2,300	545	6,225	1,664	4,884	1,803	235	29,137	4,862	1,852	53,507
1995-96	2,419	488	6,665	1,771	5,435	1,990	194	26,875	5,202	1,691	52,730
1996-97	2,523	513	6,855	1,846	5,864	2,195	240	25,043	5,349	1,785	52,213
1997-98	2,716	558	7,243	2,031	6,232	2,387	206	24,534	5,632	1,957	53,496
1998-99	2,758	588	7,352	2,122	6,832	2,571	229	24,255	6,188	1,919	54,814
1999-00	2,835	566	7,300	2,175	7,445	2,723	224	24,001	6,330	2,004	55,603
2000-01	2,717	579	7,417	2,356	7,652	2,694	243	24,217	6,917	2,191	56,983
2001-02	3,081	537	7,803	2,514	8,504	3,160	283	25,391	7,795	2,395	61,463
2002-03	2,953	481	7,582	2,574	8,892	3,053	266	24,694	8,542	2,675	61,712
2003-04	3,059	469	8,008	2,758	9,099	3,336	311	26,377	9,595	2,729	65,741
2004-05	3,054	524	8,180	2,916	9,492	3,661	319	26,279	9,642	2,701	66,768
2005-06	3,317	509	8,701	2,837	10,028	3,849	395	27,387	9,482	2,845	69,350
2006-07	3,440	490	8,910	2,745	10,449	4,034	430	28,039	9,404	2,946	70,887

Note: CSU Hayward became CSU East Bay in college year 2004-2005. Systemwide totals may differ from other tables as CSU Statewide Nursing Program degree data are not available by ethnicity. The “—” is equivalent to zero.

Table 152

Graduate Degrees Granted by Campus and by Ethnic Group, Systemwide

2006-2007

Campus	African American	American Indian	Asian American	Filipino	Mexican American	Other Latino	Pacific Islander	White	Unknown	Nonresident Alien	Total
Bakersfield	25	5	11	3	66	17	—	167	30	9	333
Channel Islands	1	—	—	1	4	1	—	9	5	—	21
Chico	1	4	19	3	13	5	2	208	35	56	346
Dominguez Hills	184	6	61	14	135	60	2	280	174	38	954
East Bay	89	4	136	18	41	31	3	286	184	350	1,142
Fresno	16	5	33	—	115	29	11	242	165	61	677
Fullerton	25	8	200	26	144	62	7	605	182	171	1,430
Humboldt	4	3	4	1	3	3	—	95	29	4	146
Long Beach	100	11	179	39	199	77	4	625	162	135	1,531
Los Angeles	63	2	167	24	264	106	2	233	143	124	1,128
Maritime Academy	—	—	—	—	—	—	—	—	—	—	—
Monterey Bay	2	2	5	—	4	2	—	37	7	8	67
Northridge	106	7	108	27	225	132	2	685	229	102	1,623
Pomona	14	1	87	14	64	22	2	139	84	40	467
Sacramento	38	11	71	18	52	26	2	390	144	72	824
San Bernardino	80	6	31	6	123	40	2	314	84	89	775
San Diego	49	10	126	42	175	59	7	811	276	264	1,819
San Francisco	79	4	220	42	81	66	5	567	264	185	1,513
San Jose	66	3	566	66	140	52	9	802	317	291	2,312
San Luis Obispo	8	3	36	3	32	9	2	257	58	9	417
San Marcos	2	2	12	1	17	13	—	113	30	8	198
Sonoma	3	4	7	1	7	4	1	132	59	10	228
Stanislaus	15	3	13	6	27	5	1	106	31	5	212
Total	970	104	2,092	355	1,931	821	64	7,103	2,692	2,031	18,163

Systemwide from 1975-1976

1975-76	418	73	316	6	233	58	56	5,709	2,828	398	10,095
1976-77	355	69	333	20	223	94	62	5,191	3,229	376	9,952
1977-78	375	76	321	25	245	82	53	5,585	2,985	403	10,150
1978-79	345	84	320	57	248	96	67	5,432	2,600	455	9,704
1979-80	290	79	371	110	270	108	43	5,522	2,446	499	9,738
1980-81	331	79	375	71	245	121	29	5,246	2,372	682	9,551
1981-82	345	107	405	59	267	121	22	5,316	2,360	759	9,761
1982-83	273	91	458	45	265	126	29	5,784	1,810	757	9,638
1983-84	297	106	508	41	278	163	33	6,060	1,411	731	9,628
1984-85	312	99	541	39	286	190	22	5,728	1,260	710	9,187
1985-86	292	95	521	43	260	161	24	5,595	992	674	8,657
1986-87	292	77	518	32	252	147	23	5,671	878	647	8,537
1987-88	282	77	596	54	302	133	16	5,955	795	769	8,979
1988-89	280	94	598	64	373	170	30	6,131	786	869	9,395
1989-90	338	89	630	66	340	195	29	6,379	909	887	9,862
1990-91	380	74	713	79	378	216	19	6,697	975	956	10,487
1991-92	421	92	735	76	437	233	24	7,141	1,071	1,055	11,285
1992-93	509	81	892	97	489	224	40	7,571	1,287	1,282	12,472
1993-94	531	92	959	139	575	281	25	7,541	1,377	1,195	12,715
1994-95	574	75	1,048	123	606	315	27	6,935	1,393	1,017	12,113
1995-96	555	94	1,138	147	606	325	27	6,683	1,494	1,060	12,129
1996-97	604	79	1,057	159	751	391	32	6,411	1,429	963	11,876
1997-98	667	94	1,290	189	877	408	34	6,805	1,510	1,341	13,215
1998-99	709	114	1,311	197	954	444	42	6,842	1,581	1,531	13,725
1999-00	688	101	1,224	214	1,022	471	44	6,595	1,588	1,637	13,584
2000-01	735	100	1,355	246	1,186	472	43	6,646	1,615	1,965	14,363
2001-02	710	103	1,344	276	1,217	529	48	6,530	1,757	2,067	14,581
2002-03	735	94	1,406	284	1,377	560	47	6,333	1,901	2,306	15,043
2003-04	852	120	1,666	320	1,427	641	43	6,860	2,342	2,580	16,851
2004-05	896	118	1,859	325	1,550	684	53	6,999	2,375	2,361	17,220
2005-06	903	118	2,052	351	1,810	761	54	7,330	2,674	2,277	18,330
2006-07	970	104	2,092	355	1,931	821	64	7,103	2,692	2,031	18,163

Note: CSU Hayward became CSU East Bay in college year 2004-2005. Graduate totals include Joint Doctorate awards. Systemwide totals may differ from other tables as CSU Statewide Nursing Program degree data are not available by ethnicity. The "—" is equivalent to zero.

Table 153

CSU Undergraduate Degrees Granted by Ethnicity, from 2000-2001

Undergraduate Degrees	2000-01		2001-02		2002-03		2003-04		2004-05		2005-06		2006-07		7-Year Change	
	Number	Percent	Number	Percent	Number	Percent	Number	Percent	Number	Percent	Number	Percent	Number	Percent	Number	Percent
African American	2,717	4.8	3,081	5.0	2,953	4.8	3,059	4.7	3,054	4.6	3,317	4.8	3,440	4.9	723	26.6
American Indian	579	1.0	537	0.9	481	0.8	469	0.7	524	0.8	509	0.7	490	0.7	-89	-15.4
Asian American	7,417	13.0	7,803	12.7	7,582	12.3	8,008	12.2	8,180	12.3	8,701	12.5	8,910	12.6	1,493	20.1
Filipino	2,356	4.1	2,514	4.1	2,574	4.2	2,758	4.2	2,916	4.4	2,837	4.1	2,745	3.9	389	16.5
Mexican American	7,652	13.4	8,504	13.8	8,892	14.4	9,099	13.8	9,492	14.2	10,028	14.5	10,449	14.7	2,797	36.6
Other Latino	2,694	4.7	3,160	5.1	3,053	4.9	3,336	5.1	3,661	5.5	3,849	5.6	4,034	5.7	1,340	49.7
Pacific Islander	243	0.4	283	0.5	266	0.4	311	0.5	319	0.5	395	0.6	430	0.6	187	77.0
Subtotal	23,658	41.5	25,882	42.1	25,801	41.8	27,040	41.1	28,146	42.2	29,636	42.7	30,498	43.0	6,840	28.9
White, Non-Latino	24,217	42.5	25,391	41.3	24,694	40.0	26,377	40.1	26,279	39.4	27,387	39.5	28,039	39.6	3,822	15.8
Total Identified	47,875	84.0	51,273	83.4	50,495	81.8	53,417	81.3	54,425	81.5	57,023	82.2	58,537	82.6	10,662	22.3
Unknown	6,917	12.1	7,795	12.7	8,542	13.8	9,595	14.6	9,642	14.4	9,482	13.7	9,404	13.3	2,487	36.0
Nonresident Alien	2,191	3.8	2,395	3.9	2,675	4.3	2,729	4.2	2,701	4.0	2,845	4.1	2,946	4.2	755	34.5
Total	56,983	100.0	61,463	100.0	61,712	100.0	65,741	100.0	66,768	100.0	69,350	100.0	70,887	100.0	13,904	24.4

CSU Graduate Degrees Granted by Ethnicity, from 2000-2001

Graduate Degrees	2000-01		2001-02		2002-03		2003-04		2004-05		2005-06		2006-07		7-Year Change	
	Number	Percent	Number	Percent	Number	Percent	Number	Percent	Number	Percent	Number	Percent	Number	Percent	Number	Percent
African American	735	5.1	710	4.9	735	4.9	852	5.1	896	5.2	903	4.9	970	5.3	235	32.0
American Indian	100	0.7	103	0.7	94	0.6	120	0.7	118	0.7	118	0.6	104	0.6	4	4.0
Asian American	1,355	9.4	1,344	9.2	1,406	9.3	1,666	9.9	1,859	10.8	2,052	11.2	2,092	11.5	737	54.4
Filipino	246	1.7	276	1.9	284	1.9	320	1.9	325	1.9	351	1.9	355	2.0	109	44.3
Mexican American	1,186	8.3	1,217	8.3	1,377	9.2	1,427	8.5	1,550	9.0	1,810	9.9	1,931	10.6	745	62.8
Other Latino	472	3.3	529	3.6	560	3.7	641	3.8	684	4.0	761	4.2	821	4.5	349	73.9
Pacific Islander	43	0.3	48	0.3	47	0.3	43	0.3	53	0.3	54	0.3	64	0.4	21	48.8
Subtotal	4,137	28.8	4,227	29.0	4,503	29.9	5,069	30.1	5,485	31.9	6,049	33.0	6,337	34.9	2,200	53.2
White, Non-Latino	6,646	46.3	6,530	44.8	6,333	42.1	6,860	40.7	6,999	40.6	7,330	40.0	7,103	39.1	457	6.9
Total Identified	10,783	75.1	10,757	73.8	10,836	72.0	11,929	70.8	12,484	72.5	13,379	73.0	13,440	74.0	2,657	24.6
Unknown	1,615	11.2	1,757	12.0	1,901	12.6	2,342	13.9	2,375	13.8	2,674	14.6	2,692	14.8	1,077	66.7
Nonresident Alien	1,965	13.7	2,067	14.2	2,306	15.3	2,580	15.3	2,361	13.7	2,277	12.4	2,031	11.2	66	3.4
Total	14,363	100.0	14,581	100.0	15,043	100.0	16,851	100.0	17,220	100.0	18,330	100.0	18,163	100.0	3,800	26.5

Note: Percentages are based on the total degrees granted for all groups instead of the total for identified ethnic groups.
 Systemwide totals may differ from other tables as CSU Statewide Nursing Program degree data are not available by ethnicity.
 Graduate totals include Joint Doctorate awards.

SECTION Vb (*Degrees Conferred*)

INDEX

A and B have no entries

C

Comparison Degree Data

California Colleges and Universities

- CSU, UC, CCC Degrees Conferred, from 1965-66, pg. [246](#)

D

Degrees Conferred

by Level of Degree

- by Campus, from 1992-93, pg. [247](#)
- by Discipline Division, from 1992-93, pg. [248](#)
- CSU, from 1935-36, pg. [249](#)
- for UC, CSU, CCC, from 1965-66, pg. [246](#)

Graduate Degrees (include Joint Doctorates)

- by Ethnic Group and Campus, pg. [256](#)

Undergraduate and Graduate Degrees

- by Discipline Division and Campus, pg. [251](#)
- by Discipline Division, from 2005-06, pg. [250](#)
- by Ethnic Group, from 2000-01, pg. [257](#)

Undergraduate Degrees

- by Ethnic Group and Campus, pg. [255](#)

Discipline Division

Degrees Conferred

- by Level of Degree, from 1992-93, pg. [248](#)
- Undergraduate and Graduate, by Campus, pg. [251](#)
- Undergraduate and Graduate, from 2005-06, pg. [250](#)

E

Ethnic Group

Degrees Conferred

- Graduate Degrees by Campus, pg. [256](#)
- Undergraduate and Graduate, from 2000-01, pg. [257](#)
- Undergraduate Degrees by Campus, pg. [255](#)

F through Z have no entries

End of Degrees Conferred Index