



# In Brief

Fall 2008

December 5, 2008

## CSU Enrollments Are Still On the Rise

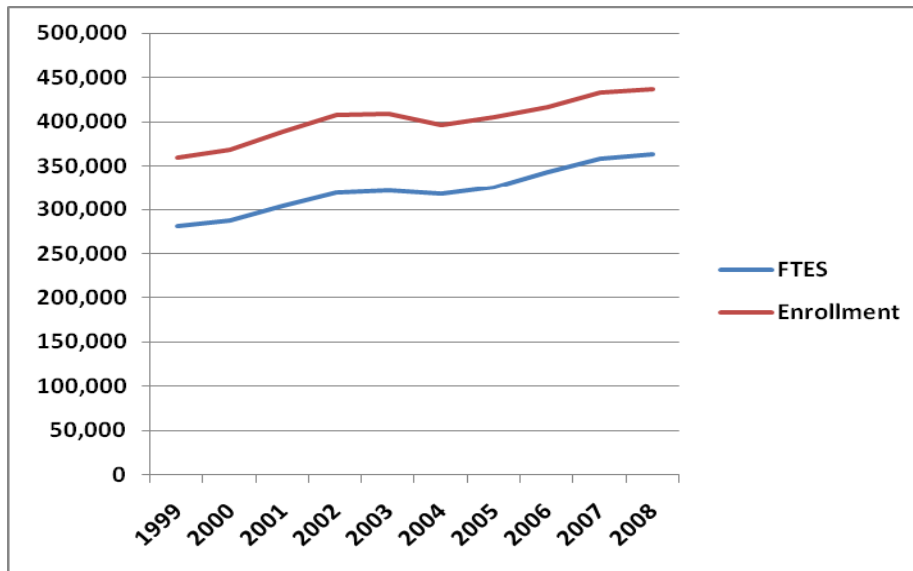


Chart A. Fall Term Enrollment and Full-Time Equivalent Students (FTES) from Fall 1999 to Fall 2008  
FTES represent the number of students that would be served if they all attempted a full-time course load.

The California State University enrollment in fall 2008 surpassed last year's student headcount. The current enrollment figure of 437,008 students is 3,991 higher than the 433,017 students recorded in fall 2007. This represents an annual increase of just under one percent (0.9%).

Higher fall enrollments occurred at fourteen CSU campuses. The largest annual gains were at East Bay (up 1,043 students), Long Beach (up 1,023 students), San Jose (up 840 students), Dominguez Hills (up 769 students), and Northridge (up 762 students).

Another way to gauge enrollments is to convert student headcounts into full-time equivalent students (FTES). In the past this was accomplished by dividing total student credit units attempted by 15, the normative workload for students pursuing a degree in 4 years. In spring 2006 the state approved a new formula for determining the FTE of graduate students (i.e., students seeking a master's or doctorate degree). Now 12 units attempted by graduate students equal one FTE.

However, for students seeking a baccalaureate or credential, the formula remained the same: 15 units attempted equal one FTE.

The current number of FTES is 363,223. Last year's figure was 357,746 so the annual gain in FTES from the prior year is 5,477 or a 1.5 percent increase.

The two graph lines in the chart displayed above illustrate the relationship between enrollment numbers and FTES, and they chart the enrollment trend from fall 1999 to fall 2008. Tables 1 and 2, shown on the following pages, list the exact systemwide numbers used to plot the lines and they list campus-specific numbers.

Long Beach recorded the highest campus enrollment (37,891) for the system. Long Beach was also the leader in FTES enrollment (30,895)

Table 1. Selected Fall Term Enrollment in the California State University, from Fall 1999<sup>(1)</sup>

Campus	1999	2000	2001	2002	2003	2004	2005	2006	2007	2008
Long Beach	30,011	30,918	33,259	34,566	34,715	33,479	34,547	35,574	36,868	37,891
Fullerton	27,167	28,381	30,357	32,143	32,592	32,744	35,040	35,921	37,130	36,996
Northridge	27,947	29,066	31,448	32,070	33,426	31,341	33,243	34,560	35,446	36,208
San Diego	31,413	31,609	34,171	34,304	33,676	32,936	32,693	34,305	36,559	35,832
San Jose	26,937	26,698	28,007	30,350	28,932	29,044	29,975	29,604	31,906	32,746
San Francisco	27,701	26,826	26,866	28,378	29,686	28,804	28,950	29,628	30,125	30,014
Sacramento	24,530	25,714	26,923	28,558	28,375	27,972	27,932	28,529	28,829	29,011
Fresno	18,321	19,056	20,007	21,272	22,342	19,781	20,371	22,098	22,383	22,613
Pomona	18,021	18,424	19,041	19,821	19,804	19,003	19,885	20,510	21,477	21,190
Los Angeles	19,783	19,593	20,675	21,099	20,637	20,307	20,034	20,565	21,051	20,743
San Luis Obispo	16,470	16,877	18,079	18,453	18,303	17,582	18,475	18,722	19,777	19,471
San Bernardino	14,280	14,909	15,985	16,341	16,927	16,194	16,431	16,479	17,066	17,646
Chico	15,261	15,912	16,704	16,246	15,516	15,734	15,919	16,250	17,034	17,132
East Bay	12,667	12,705	13,240	13,876	13,455	13,061	12,535	12,706	13,124	14,167
Dominguez Hills	12,524	12,848	12,871	13,504	13,248	12,613	12,357	12,068	12,082	12,851
San Marcos	5,739	6,256	6,496	7,678	7,777	7,365	7,502	8,734	9,159	9,148
Sonoma	7,083	7,402	7,590	8,219	8,371	7,977	7,749	8,274	8,770	8,921
Stanislaus	6,489	7,062	7,534	7,850	8,072	7,858	8,137	8,374	8,836	8,601
Humboldt	7,545	7,433	7,382	7,611	7,725	7,550	7,462	7,435	7,773	7,800
Bakersfield	6,210	6,397	7,050	7,765	7,933	7,755	7,549	7,711	7,700	7,684
Monterey Bay	2,265	2,624	3,020	3,551	3,760	3,945	3,773	3,818	4,080	4,340
Channel Islands <sup>(2)</sup>	-	-	-	2,139	1,560	2,021	2,575	3,123	3,599	3,783
Maritime Academy	583	653	606	721	698	759	860	828	858	875
Campus Total	358,947	367,363	387,311	406,515	407,530	395,825	403,994	415,816	431,632	435,663
CalState TEACH	309	588	733	808	798	640	712	713	774	738
International										
Programs	463	518	561	573	618	583	576	583	611	607
Statewide Nursing										
<sup>(3)</sup>	-	-	-	-	-	-	-	-	-	-
Summer Arts	-	-	-	-	-	-	-	-	-	-
Grand Total	359,719	368,469	388,605	407,896	408,946	397,048	405,282	417,112	433,017	437,008

**Notes:**

- 1) Beginning fall 2000, fall enrollment represents profile data and may differ from final data posted in other reports.
- 2) Channel Islands serve 1,560 native students and 780 continuing students that originally matriculated at Northridge.
- 3) Beginning fall 1998, Statewide Nursing enrollment is included in Dominguez Hills.

Table 2. Selected Fall Term Full-Time Equivalents in the California State University, from Fall 1999<sup>(1)</sup>

Campus	1999	2000	2001	2002	2003	2004	2005	2006	2007	2008
Long Beach	22,836	23,725	25,592	26,480	26,606	26,009	27,060	28,577	29,797	30,895
San Diego	24,670	24,701	27,022	27,622	27,004	26,769	26,948	28,920	31,178	30,821
Northridge	20,475	21,440	23,170	24,023	24,853	23,237	25,139	26,651	27,418	28,461
Fullerton	19,885	20,701	22,016	23,351	23,428	24,142	25,975	27,025	28,132	28,362
San Jose	19,696	19,622	20,525	22,186	21,167	21,554	22,317	23,304	25,276	26,291
San Francisco	20,576	19,993	19,962	21,244	22,483	22,187	22,537	23,950	24,603	24,692
Sacramento	19,159	19,971	20,985	22,189	22,294	22,091	22,241	23,153	23,265	23,613
Fresno	15,577	15,838	16,461	17,255	18,166	17,133	17,669	18,845	19,150	19,339
San Luis Obispo	15,301	15,606	16,745	17,275	17,196	16,643	17,286	17,620	18,566	18,498
Pomona	14,619	14,903	15,668	16,309	16,603	15,964	16,717	17,527	18,177	17,805
Los Angeles	14,002	13,809	14,711	15,166	15,223	15,457	15,294	16,251	16,687	16,297
Chico	13,692	14,216	14,840	14,409	13,883	14,215	14,550	15,025	15,822	15,963
San Bernardino	11,124	11,556	12,374	12,687	13,224	13,100	13,208	13,776	14,173	14,866
East Bay	10,049	9,971	10,388	10,952	10,778	10,660	10,251	10,979	11,412	12,510
Dominguez Hills	7,923	8,146	8,093	8,709	8,749	8,523	8,266	8,640	8,764	8,846
Sonoma	6,059	6,353	6,580	7,102	7,333	6,958	6,866	7,466	7,985	8,258
San Marcos	4,313	4,710	4,841	5,826	5,979	5,837	5,969	7,089	7,479	7,449
Humboldt	7,060	6,902	6,842	7,007	7,092	7,030	6,905	6,876	7,189	7,223
Bakersfield	5,296	5,449	5,956	6,601	6,707	6,615	6,623	6,937	6,906	6,982
Stanislaus	4,855	5,184	5,442	5,678	5,870	5,778	6,020	6,314	6,686	6,634
Monterey Bay	2,142	2,533	2,888	3,376	3,646	3,851	3,618	3,612	3,923	4,129
Channel Islands <sup>(2)</sup>	-	-	-	1,258	1,296	1,656	2,137	2,640	3,038	3,271
Maritime Academy	661	713	684	742	771	756	834	886	922	884
Campus Total <sup>(4)</sup>	279,970	286,042	301,785	317,447	320,349	316,165	324,432	342,061	356,547	362,089
International Programs	463	570	617	620	680	641	634	647	672	631
CalState TEACH	185	412	501	565	578	427	495	491	527	503
Statewide Nursing <sup>(3)</sup>	-	-	-	-	-	-	-	-	-	-
Summer Arts	-	-	-	-	-	-	-	-	-	-
Grand Total <sup>(4)</sup>	280,619	287,021	302,904	318,631	321,607	317,234	325,561	343,199	357,746	363,223

**Notes:**

- 1) Beginning fall 2000, fall enrollment represents profile data and may differ from final data posted in other reports.
- 2) Channel Islands serve 1,560 native students and 780 continuing students that originally matriculated at Northridge.
- 3) Beginning fall 1998, Statewide Nursing enrollment is included in Dominguez Hills.
- 4) Due to rounding, the figures presented on this page may not sum to totals.