

Introduction

The libraries of the California State University support the teaching and research activities of its twenty-two campuses through the preservation of knowledge and literary tradition in its written form and through the acquisition and dissemination of information in a variety of manifestations. This section summarizes the resources acquired and services provided by the libraries in 2000-2001 and displays historical data from 1965-1966. Total library expenditures and full-time equivalent positions are also displayed by campus.

California State University libraries acquire information in a wide assortment of formats: print formats include books and periodicals, microformats include microfilm

and microfiche, and electronic formats include remotely accessed online databases and locally stored databases on compact disk. In addition, the libraries acquire collections of microcomputer software, audio and visual recordings, and other categories of print and nonprint material needed for academic programs.

The table below displays the dramatic growth of journal titles available electronically in full text through online subscriptions. Systemwide consortial purchasing of these online resources has yielded significant cost savings over individual library purchasing and has positioned the CSU to benefit from an industrywide effort to increasingly make periodicals available electronically.

Table 176

**Periodical Subscriptions Purchased by CSU Libraries
and Subscription Expenditures, 1980-1981 to 2000-2001**

Year	Print Subscriptions	E-Journal Titles	Expenditures
1980-81	61,621	—	\$4,468,843
1981-82	62,493	—	5,029,161
1982-83	61,759	—	4,797,986
1983-84	63,485	—	5,259,636
1984-85	66,092	—	5,585,098
1985-86	67,142	—	7,090,053
1986-87	67,968	—	7,784,326
1987-88	67,914	—	8,598,499
1988-89	65,894	—	9,614,617
1989-90	65,887	—	10,741,466
1990-91	63,822	—	10,298,341
1991-92	57,324	—	10,246,567
1992-93	56,664	—	9,436,591
1993-94	55,298	—	9,424,881
1994-95	53,190	—	9,406,377
1995-96	52,440	—	9,851,286
1996-97	47,310	—	9,628,956
1997-98	47,402	—	10,337,240
1998-99	45,314	40,113	15,304,081
1999-00	45,830	102,042	17,617,989
2000-01	45,531	168,070	\$18,490,700*

*Includes \$2,271,953 for online full-text subscriptions.

Table 177

**Total Bound Volume Library Holdings and Periodical Subscriptions
as of June 30, 2001**

Campus	Number of Bound Volumes Held ¹			Number of Periodical Subscriptions Received in Print ²
	Total	Books Excluding Juvenile Works and Textbooks	Bound Periodicals	
Bakersfield	425,270	361,280	63,990	1,667
Chico	915,319	722,487	192,832	1,753
Dominguez Hills	434,608	434,608	—	1,705
Fresno	946,418	797,246	149,172	2,450
Fullerton	1,080,862	1,011,798	69,064	2,476
Hayward	899,183	787,137	112,046	1,774
Humboldt	558,294	503,758	54,536	1,613
Long Beach	1,108,367	881,412	226,955	2,986
Los Angeles	1,059,867	868,680	191,187	2,296
Maritime Academy	34,419	31,034	3,385	225
Monterey Bay	52,474	48,212	4,262	321
Northridge	1,227,981	1,000,923	227,058	2,563
Pomona	710,508	608,010	102,498	2,731
Sacramento	1,152,143	945,909	206,234	3,293
San Bernardino	715,364	633,175	82,189	1,504
San Diego	1,282,032	1,007,986	274,046	3,320
San Francisco	995,431	860,271	135,160	4,255
San Jose	1,079,299	865,462	213,837	2,991
San Luis Obispo	690,409	584,673	105,736	2,071
San Marcos	168,878	154,327	14,551	812
Sonoma	640,788	562,787	78,001	914
Stanislaus	335,907	325,719	10,188	1,811
Total	16,513,821	13,996,894	2,516,927	45,531
Systemwide from June 30,1966				
1966	3,231,100	—	—	27,881
1967	3,662,700	—	—	34,718
1968	4,059,520	—	—	41,279
1969	4,475,300	—	—	50,882
1970	5,188,080	—	—	53,426
1971	5,644,277	—	—	57,919
1972	6,221,267	—	—	65,224
1973	6,932,673	—	—	68,759
1974	7,373,797	—	—	70,776
1975	7,716,490	—	—	73,451
1976	8,194,316	—	—	70,435
1977	8,489,436	7,288,257	1,201,179	69,310
1978	8,807,382	7,517,003	1,290,379	69,705
1979	9,182,204	7,837,699	1,344,505	71,325
1980	9,608,383	8,215,892	1,392,491	68,765
1981	9,980,021	8,534,565	1,445,456	70,060
1982	10,352,699	8,847,702	1,504,997	69,840
1983	10,710,691	9,183,130	1,527,561	67,353
1984	11,070,214	9,481,470	1,588,744	70,986
1985	11,409,696	9,767,589	1,642,107	73,468
1986	11,855,767	10,167,737	1,688,030	74,451
1987	12,202,407	10,453,295	1,749,112	74,702
1988	12,522,475	10,717,913	1,804,502	74,131
1989	12,823,046	10,958,330	1,864,713	70,973
1990	13,121,079	11,195,901	1,925,178	71,203
1991	13,371,787	11,381,333	1,990,454	68,201
1992	13,763,453	11,585,821	2,177,632	61,562
1993	13,988,131	11,764,386	2,223,745	56,664
1994	14,284,687	12,010,817	2,273,870	55,298
1995	14,510,123	12,182,733	2,327,390	53,190
1996	14,741,563	12,353,984	2,387,579	52,440
1997	14,514,758	12,073,152	2,441,606	47,310
1998	15,173,559	12,667,136	2,506,423	47,402
1999	15,696,871	13,351,841	2,345,030	45,314
2000	16,208,081	13,726,367	2,481,714	45,830
2001	16,513,821	13,996,894	2,516,927	45,531

¹A volume is described as a physical unit of any printed, typewritten, handwritten, mimeographed, or processed work contained in one binding of portfolio, hardbound or paperbound, which has been cataloged, classified, and/or made ready for use.

²A periodical is defined as a publication, issued in parts, that usually contains articles by several contributors. It generally has a distinctive title, and successive numbers or parts are intended to appear at stated intervals usually for an indefinite period. Newspapers and gift subscriptions are included. In addition to subscriptions held in print format, a total of 168,070 electronic journal titles were held systemwide.

Figure 29
Books and Bound Periodicals Added and Withdrawn from CSU Libraries,
1980-1981 to 2000-2001

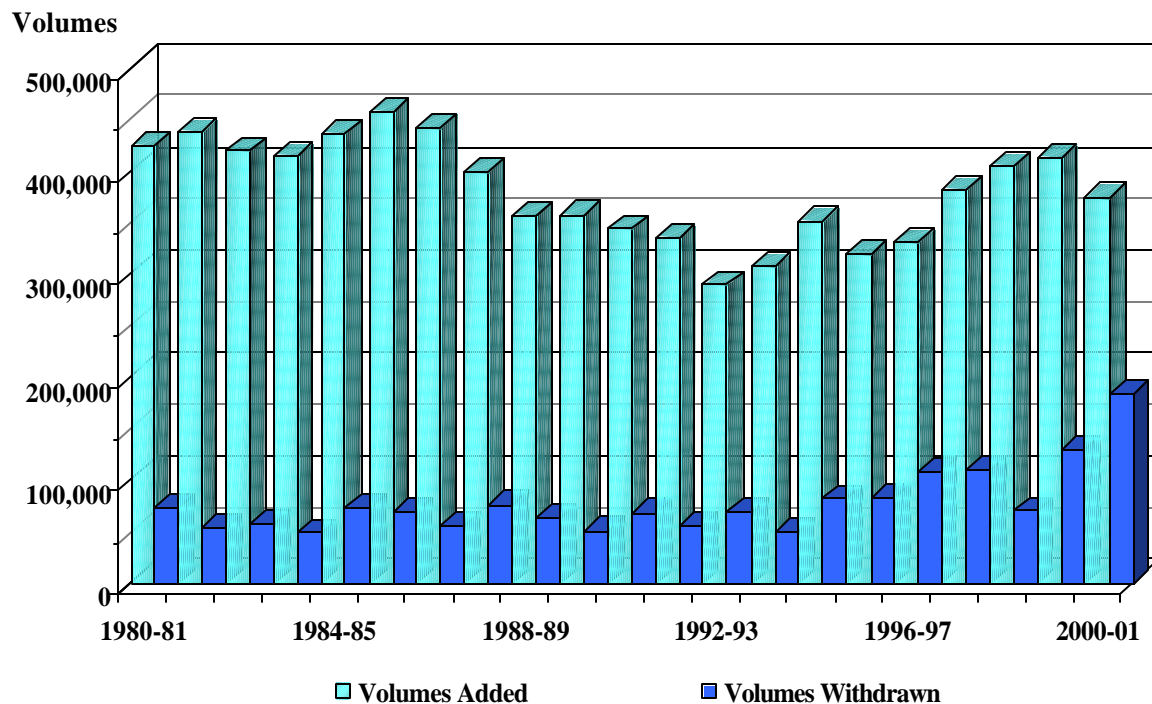


Figure 30
Annual Net Growth in Volumes at CSU Libraries, 1980-1981 to 2000-2001

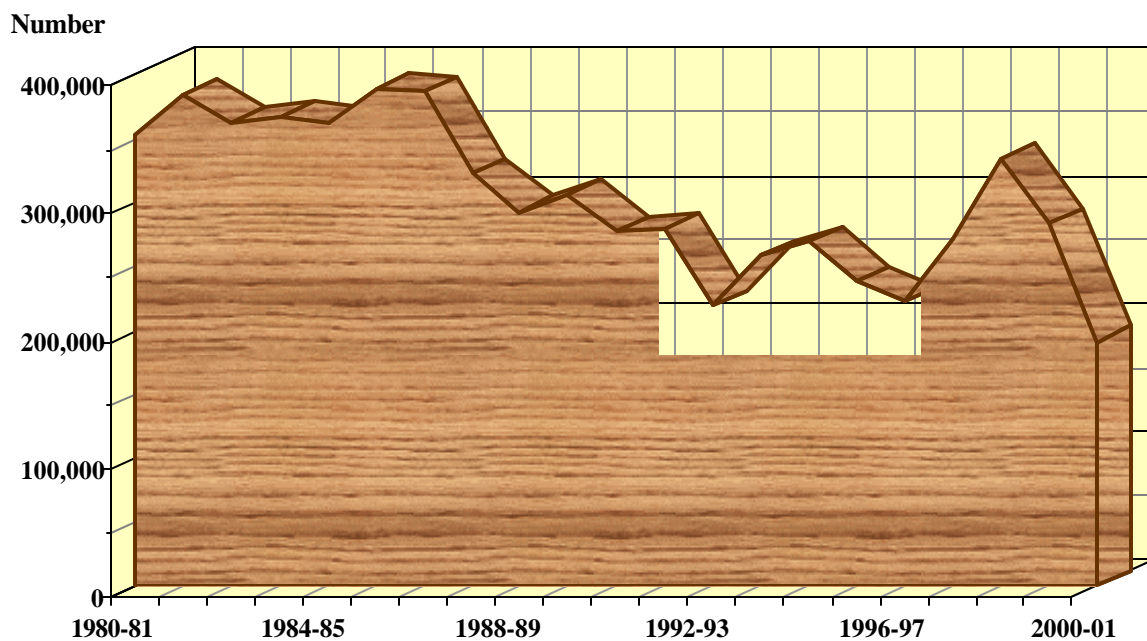


Table 178

Library Microforms and Other Print Materials by Campus*
as of June 30, 2001

Campus	HELD			ADDED		
	Microforms (units)	Juvenile Works and K-12 Textbooks	Government Documents	Microforms	Juvenile Works and K-12 Textbooks	Government Documents
Bakersfield	655,462	9,194	125,893	42,031	2,895	0
Chico	1,140,465	33,245	706,228	11,917	343	4,006
Dominguez Hills	683,343	N/A	47,441	2,678	N/A	3,611
Fresno	1,469,875	29,778	274,324	13,954	6,615	5,922
Fullerton	1,071,443	30,557	0	24,809	962	0
Hayward	822,085	15,805	62,743	18,241	83	1,928
Humboldt	600,254	13,423	389,416	6,501	313	1,108
Long Beach	1,460,812	40,091	0	17,619	2,050	0
Los Angeles	1,040,737	30,839	841,740	19,297	266	26,213
Maritime Academy	20,680	0	300	0	0	0
Monterey Bay	0	270	0	0	87	0
Northridge	3,084,616	21,730	1,669,981	22,230	1,121	83,933
Pomona	2,453,273	12,581	0	29,795	640	0
Sacramento	2,302,454	43,080	673,260	38,658	928	N/A
San Bernardino	643,292	15,895	0	14,463	659	0
San Diego	4,153,642	18,428	644,028	92,168	354	12,788
San Francisco	2,209,455	34,355	468,259	67,287	196	0
San Jose	1,668,609	61,988	307,020	4,144	1,499	0
San Luis Obispo	2,055,543	53,668	356,527	62,925	2,271	1,166
San Marcos	879,408	32,490	0	30,350	2,450	0
Sonoma	1,655,701	25,605	91,751	26,651	416	990
Stanislaus	1,306,626	5,600	111,249	26,273	89	3,443
Total	31,377,775	528,622	6,770,160	571,991	24,237	145,108

*The above table was altered in 1997 to conform more closely with IPEDS categories. As of 1997, only an aggregate count of microform formats is available.

Table 179

Other Nonprint and Miscellaneous Library Materials
Added Systemwide During the Period July 1, 2000, Through June 30, 2001*

Medium	Pieces
Film and Video Materials	9,077
Sound Recordings	4,922
Computer Files	3,623
Maps	31,205
Pamphlets and Other Library Materials	16,895
Total	65,722

*Does not include art prints, pictures, certain government publications, and transparencies.

Table 180

Total Bound Volumes Added During the Period July 1, 2000, Through June 30, 2001

Campus	Total Bound Volumes Added	Added by Purchase and Gift		Volumes Withdrawn	Annual Net Growth in Volumes ²
		Books ¹	Bound Periodicals		
Bakersfield	18,670	16,172	2,498	13,978	4,692
Chico	19,771	14,884	4,887	13,332	6,439
Dominguez Hills	6,377	6,044	333	11,950	-5,573
Fresno	19,535	17,722	1,813	13,134	6,401
Fullerton	23,572	22,155	1,417	9,918	13,654
Hayward	14,169	10,330	3,839	7,842	6,327
Humboldt	23,493	22,240	1,253	4,547	18,946
Long Beach	19,863	16,439	3,424	28,358	-8,495
Los Angeles	20,000	12,960	7,040	1,029	18,971
Maritime Academy	2,406	2,109	297	0	2,406
Monterey Bay	3,705	3,364	341	189	3,516
Northridge	30,164	24,921	5,243	0	30,164
Pomona	14,588	12,084	2,504	2,098	12,490
Sacramento	22,510	17,583	4,927	3,389	19,121
San Bernardino	12,937	11,095	1,842	265	12,672
San Diego	26,503	20,207	6,296	4,412	22,091
San Francisco	33,459	31,616	1,843	16,210	17,249
San Jose	18,820	12,999	5,821	22,532	-3,712
San Luis Obispo	13,502	10,480	3,022	11,744	1,758
San Marcos	10,802	9,152	1,650	611	10,191
Sonoma	13,722	10,722	3,000	17,092	-3,370
Stanislaus	6,027	5,991	36	1,003	5,024
Total	374,595	311,269	63,326	183,633	190,962

Systemwide from 1966-1967

1966-67	502,107	—	—	—	—
1967-68	476,121	—	—	—	—
1968-69	492,700	—	—	—	—
1969-70	795,706	—	—	—	—
1970-71	572,200	—	—	—	—
1971-72	657,113	—	—	—	—
1972-73	654,131	—	—	—	—
1973-74	561,951	—	—	—	—
1974-75	504,307	—	—	—	—
1975-76	488,163	—	—	—	—
1976-77	444,654	352,235	67,173	58,026	386,628
1977-78	456,755	361,536	71,035	51,590	405,165
1978-79	447,587	357,141	66,163	70,459	377,128
1979-80	453,925	378,697	52,908	58,379	395,546
1980-81	425,078	343,019	56,721	73,636	351,442
1981-82	438,459	356,059	64,051	54,415	384,044
1982-83	420,274	345,504	61,826	57,708	362,566
1983-84	415,129	335,348	63,688	48,883	366,246
1984-85	436,816	361,985	60,773	74,211	362,605
1985-86	457,923	396,334	61,589	69,338	388,585
1986-87	442,001	365,845	64,869	56,078	385,923
1987-88	398,987	322,756	63,038	76,254	322,733
1988-89	356,903	285,784	58,632	64,305	292,598
1989-90	357,811	275,560	70,190	51,409	306,402
1990-91	344,460	263,379	65,944	67,737	276,723
1991-92	335,106	251,100	68,764	55,045	280,061
1992-93	289,009	213,259	52,661	69,127	219,882
1993-94	308,053	221,974	66,680	50,127	257,926
1994-95	351,199	247,428	63,133	82,304	268,895
1995-96	320,091	226,668	66,892	82,608	237,483
1996-97 ³	330,483	268,177	62,306	107,835	222,648
1997-98	382,282	314,960	67,322	109,917	272,365
1998-99	404,467	337,236	67,231	69,905	334,562
1999-00	413,172	352,556	60,616	129,754	283,418
2000-01	374,595	311,269	63,326	183,633	190,962

¹ Excludes juvenile works and textbooks.² Total Bound Volumes Added minus Volumes Withdrawn.³ Books Added for 1996-1997 and after includes volumes added by gift; historical data for prior years include only volumes added by purchase.

Note: Volumes added to a collection mean those that have been fully processed and/or made ready for use. Thus, although volumes may already have been ordered and received by a library, if they have not been classified, cataloged, and otherwise made ready for use, they are not reported here. Furthermore, because the budgeted prices of books represent an average for all 22 libraries, total volumes can only approximately be related to changes in collection size shown in preceding tables.

Table 181

Library Expenditures and Staffing as of June 30, 2001

Campus	Library Expenditures		Library Staffing	
	Amount	Per FTE Student	FTE Library Staff	Per 100 FTE Students
Bakersfield	\$2,622,694	\$478.4	26.5	0.35
Chico	5,032,967	353.6	49.6	0.36
Dominguez Hills	2,729,208	338.6	29.0	0.45
Fresno	7,031,516	446.2	71.5	0.31
Fullerton	6,100,045	291.7	64.0	0.34
Hayward	3,825,057	344.7	37.5	0.54
Humboldt	3,348,478	472.0	38.6	0.31
Long Beach	7,522,733	325.7	72.5	0.35
Los Angeles	5,695,166	373.9	53.6	0.52
Maritime Academy	353,644	491.7	3.8	0.65
Monterey Bay	1,258,609	518.4	15.8	0.41
Northridge	7,565,175	353.9	88.3	0.29
Pomona	5,423,148	334.2	46.8	0.41
Sacramento	7,276,390	365.8	81.5	0.37
San Bernardino	3,909,711	338.6	42.4	0.40
San Diego	11,696,018	466.4	100.5	0.45
San Francisco	8,744,571	442.8	89.4	0.39
San Jose	7,705,113	402.9	74.2	0.35
San Luis Obispo	5,543,694	349.8	55.5	0.61
San Marcos	3,221,512	684.1	28.7	0.54
Sonoma	3,043,171	488.9	33.5	0.44
Stanislaus	2,800,119	496.0	25.0	0.41
Total	\$112,448,739	\$412.0	1,127.9	0.41

Systemwide from 1965-1966

1965-66	\$10,131,417	\$87	1,096.0	0.94
1966-67	\$13,764,271	\$106	1,260.0	0.96
1967-68	\$14,395,715	\$100	1,246.0	0.85
1968-69	\$19,718,581	\$121	1,580.0	0.95
1969-70	\$23,813,911	\$131	1,713.0	0.92
1970-71	\$21,161,114	\$107	1,563.0	0.77
1971-72	\$20,274,896	\$99	1,588.8	0.76
1972-73	\$24,148,140	\$110	1,621.4	0.74
1973-74	\$26,856,154	\$120	1,650.6	0.74
1974-75	\$29,340,723	\$129	1,679.8	0.74
1975-76	\$31,028,492	\$132	1,680.3	0.71
1976-77	\$34,075,237	\$147	1,663.6	0.71
1977-78	\$38,129,322	\$162	1,724.2	0.73
1978-79	\$38,094,215	\$166	1,628.9	0.71
1979-80	\$45,744,809	\$205	1,623.6	0.72
1980-81	\$54,462,666	\$234	1,685.6	0.71
1981-82	\$56,519,112	\$236	1,666.9	0.69
1982-83	\$57,222,742	\$237	1,669.2	0.69
1983-84	\$58,286,651	\$241	1,505.4	0.62
1984-85	\$69,328,311	\$287	1,574.1	0.65
1985-86	\$73,587,666	\$297	1,578.0	0.64
1986-87	\$78,538,380	\$311	1,518.1	0.60
1987-88	\$84,064,330	\$326	1,577.1	0.61
1988-89	\$86,883,967	\$326	1,583.0	0.59
1989-90	\$94,204,070	\$347	1,637.5	0.60
1990-91	\$94,148,375	\$340	1,217.0	0.44
1991-92	\$94,647,092	\$351	1,216.0	0.45
1992-93	\$87,350,925	\$339	1,062.0	0.41
1993-94	\$87,924,252	\$357	1,085.0	0.44
1994-95	\$90,173,523	\$367	1,080.0	0.44
1995-96	\$95,548,423	\$378	1,097.0	0.43
1996-97	\$98,813,635	\$378	1,129.0	0.43
1997-98	\$96,689,660	\$362	1,087.9	0.41
1998-99	\$105,981,968	\$388	1,098.8	0.40
1999-00	\$112,064,536	\$399	1,128.8	0.40
2000-01	\$112,448,739	\$412	1,127.9	0.41

Table 182

Library Activities for Year Ending June 30, 2001

Campus	Items Charged During Year to Patrons	Noncharged Items Reshelled	Number of Interlibrary Loan Transactions	
			Requests Sent	Requests Received
Bakersfield	91,057	126,220	5,076	8,776
Chico	215,364	248,660	8,501	9,179
Dominguez Hills	79,506	75,571	4,506	6,596
Fresno	316,869	371,862	8,781	8,461
Fullerton	279,484	401,797	15,921	18,132
Hayward	148,440	101,366	8,923	9,667
Humboldt	195,637	190,440	5,305	5,370
Long Beach	287,328	204,942	18,053	11,756
Los Angeles	218,980	225,681	8,140	8,367
Maritime Academy	8,121	1,750	145	99
Monterey Bay	27,604	5,751	3,625	779
Northridge	310,301	312,077	5,528	5,134
Pomona	227,387	192,396	9,943	11,411
Sacramento	307,377	477,630	4,870	10,896
San Bernardino	137,023	184,663	7,323	6,713
San Diego	359,017	874,803	11,045	20,016
San Francisco	329,783	271,916	12,761	8,996
San Jose	208,871	146,270	17,338	17,468
San Luis Obispo	435,772	154,462	11,496	4,361
San Marcos	74,364	26,975	3,962	3,622
Sonoma	245,196	28,660	7,726	15,996
Stanislaus	154,670	24,423	4,014	5,342
Total	4,658,151	4,648,315	182,982	197,137
Systemwide from 1970				
1970	5,129,405	6,815,796	21,124	9,271
1971	5,796,228	7,360,829	22,323	10,213
1972	6,375,823	7,512,482	23,254	11,518
1973	6,047,815	7,507,687	27,325	15,745
1974	6,130,019	7,369,989	32,062	21,700
1975	6,618,024	7,134,836	37,160	30,124
1976	7,235,385	7,179,774	48,815	49,421
1977	6,510,118	7,428,298	51,056	56,877
1978	6,721,907	8,059,863	69,749	70,722
1979	6,634,887	8,032,381	73,865	74,454
1980	6,748,171	8,637,807	74,490	98,097
1981	6,876,054	9,498,772	81,353	115,097
1982	7,345,617	8,602,097	84,819	121,359
1983	8,123,601	9,607,445	84,713	129,312
1984	7,844,721	10,395,852	78,397	125,241
1985	7,676,950	11,082,643	80,276	131,584
1986	8,075,871	11,017,133	85,529	146,944
1987	7,679,875	11,183,933	89,422	166,856
1988	7,373,241	11,873,471	102,584	189,774
1989	7,805,718	11,328,990	115,993	206,785
1990	8,047,936	10,775,207	120,112	223,740
1991	7,712,070	11,197,303	126,549	239,429
1992	7,218,427	9,055,730	135,991	243,117
1993	8,650,105	9,293,589	143,036	239,386
1994	6,129,342	8,701,625	155,674	237,057
1995	5,731,741	8,588,444	176,491	264,914
1996	5,919,930	8,486,624	188,656	280,578
1997	5,624,791	7,760,177	156,528	159,671
1998	5,483,293	7,044,875	204,377	266,815
1999	5,235,914	5,994,213	187,661	161,304
2000	4,964,398	5,285,158	176,403	171,026
2001	4,658,151	4,648,315	182,982	197,137

Library workload is recorded in a variety of ways, but the most widely used indicators are related to the use made of a collection. The number of volumes charged means those that are formally "checked out" from their usual places within a library to a user or moved to another place within the library. For example, a book is considered charged when it is moved from the general collection to the reserve book collection and also charged each time a user checks out the book from the reserve collection.

Items which are nonchargeable, such as periodicals, microfilm reels, etc., constitute workload when they are removed by users from their usual assigned shelf places and must be reshelled by the library staff.

Interlibrary loan transactions provide information concerning the degree of cooperative use of collections of libraries both within the California State University system and between those and other libraries wherever located.

This page intentionally left blank.