

Introduction

Since 1963, the California State University system has offered study abroad programs to students from all of its campuses through the state-funded Office of International Programs. These programs place CSU students in distinguished host universities and other higher education institutions abroad for a full academic year. In addition to these programs, individual campuses of the system offer credit and noncredit study abroad through their own academic departments or through extended education. The data presented here relate only to the systemwide International Programs (IP).

The International Programs enables students to enroll in a foreign university while maintaining home campus residency, earning resident academic credit toward award of a CSU degree, and retaining eligibility for financial aid support. The International Programs is affiliated with over 50 distinguished universities in 17 countries: Australia, Canada, Chile, Denmark, France, Germany, Israel, Italy, Japan, Korea, Mexico, New Zealand, Spain, Sweden, Taiwan, the United Kingdom, and Zimbabwe. CSU International Programs study centers abroad emphasize rapid progress in developing international communication skills and content courses that deepen the students' understanding of their academic major. An extensive array of academic disciplines can be found in these programs, including many that have not been traditionally served by study abroad programs.

While most CSU students select study centers in Europe for their study abroad experience, the International Programs has focused its development in recent years on non-European locations. Of the 17 study centers, 10 are located outside of Europe. A credential program in Mexico began in 1994-1995,

bringing together the credential programs of the CSU with experience in Mexico to provide a special pathway for the award of the multiple subject credential with a bilingual emphasis. The goal of this intensive 13-month program, conducted in California and Mexico by both CSU and Mexican faculty, is to provide linguistic and cultural immersion to meet California's need for internationally trained teachers. The latest addition to the International Programs is the Pontificia Universidad Catolica de Chile, which will receive its first CSU students in fall 2001.

Most of the programs involve partial or full exchange of students. Currently, approximately 150 students from partner institutions abroad are attending CSU campuses through an exchange agreement. This trend to substitute exchange for pure "export" operations is expected to continue and will likely involve additional countries.

Enrollment in the International Programs has fluctuated since its inception in 1963-1964, reacting to international events, changes in currency exchange rates, budgetary restrictions, and economic conditions in California. Enrollment for 2000-2001 was 518 and is expected to grow again in 2001-2002. Italy and Spain have continued to be the most popular study sites abroad. During 2000-2001, Cal Poly San Luis Obispo provided the single largest contingent of IP students, followed by San Francisco State University. Over 70 percent of the students in 2000-2001 received financial aid. The CSU International Programs continues to surpass the national statistics on the diversity of its student body, with over one-third of its students representing minority populations.

Figure 17
Total Enrollment in International Programs, 1975-1976 to 2000-2001

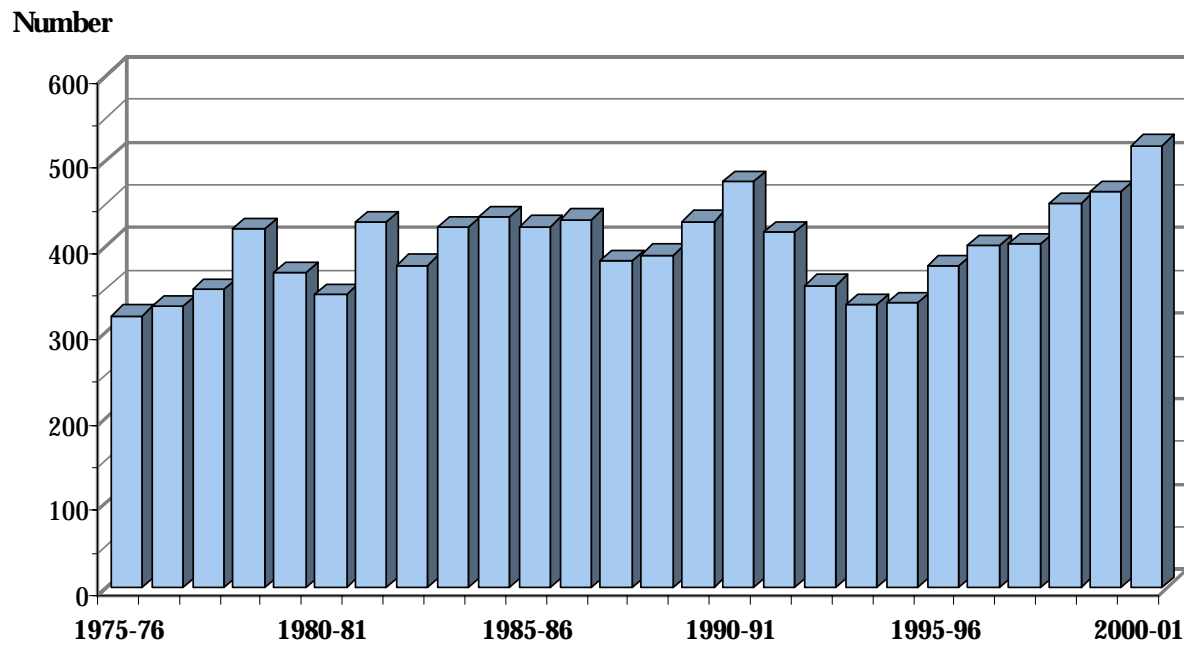


Table 120

Enrollment in International Programs, 1984-1985 to 2000-2001

	84-85	85-86	86-87	87-88	88-89	89-90	90-91	91-92	92-93	93-94	94-95	95-96	96-97	97-98	98-99	99-00	00-01	
By Home Campus																		
Bakersfield	4	5	5	5	2	7	8	5	4	1	4	1	1	1	1	1	0	
Chico	19	27	20	24	29	32	35	26	25	32	12	25	20	28	28	20	26	
Dominguez Hills	6	13	5	4	7	3	7	9	4	10	7	5	3	2	3	5	1	
Fresno	13	8	11	10	8	10	7	8	6	5	4	2	1	5	5	2	1	
Fullerton	11	20	26	13	26	22	30	19	21	13	23	13	22	12	15	36	43	
Hayward	12	7	8	7	4	9	6	9	10	5	5	11	11	6	9	6	9	
Humboldt	11	18	20	14	15	29	35	24	22	30	25	22	20	28	24	18	32	
Long Beach	32	34	32	23	31	29	19	13	16	17	20	11	25	20	24	25	33	
Los Angeles	6	10	14	8	4	7	21	12	6	8	10	20	6	11	8	3	4	
Monterey Bay*	—	—	—	—	—	—	—	—	—	—	—	—	—	—	5	5	15	
Northridge	40	24	29	39	38	38	40	34	23	16	19	29	26	23	26	36	39	
Pomona	50	50	31	29	27	32	28	31	23	23	17	25	16	20	21	14	17	
Sacramento	43	40	31	29	28	32	33	26	27	21	19	30	22	18	15	24	34	
San Bernardino	5	9	7	2	5	1	7	6	3	1	2	7	6	2	8	7	15	
San Diego	48	36	45	43	34	46	37	42	36	25	41	25	39	39	35	27	29	
San Francisco	35	34	41	31	25	43	39	43	35	20	26	52	71	74	77	96	64	
San Jose	14	19	14	21	21	18	22	12	12	10	10	8	3	6	12	9	11	
San Luis Obispo	70	53	75	70	75	57	81	87	66	80	67	57	69	71	82	70	89	
San Marcos*	—	—	—	—	—	—	—	—	—	1	2	4	9	9	15	12	8	
Sonoma	9	8	11	6	7	10	17	9	10	12	13	21	24	23	33	43	46	
Stanislaus	6	8	6	5	4	4	3	1	5	2	8	9	7	5	4	4	2	
All Campuses	434	423	431	383	390	429	475	416	354	332	334	377	401	403	450	463	518	
By Country or Center																		
Australia	—	1	2	3	6	7	3	1	1	1	0	2	5	2	6	9	8	
Brazil	4	3	2	0	2	2	4	1	2	2	1	5	1	0	2	0	0	
Canada	19	11	10	8	8	16	16	13	4	5	2	7	7	1	4	7	5	
Denmark	54	33	55	33	36	29	32	24	26	30	19	18	20	15	26	21	34	
France	61	56	59	51	38	46	46	63	50	43	41	46	45	58	58	57	67	
Germany	53	65	57	53	52	40	57	46	37	34	35	34	29	22	20	41	30	
Israel	12	5	11	6	6	17	8	10	9	11	9	10	7	9	13	4	11	
Italy	69	81	77	61	67	74	88	77	63	60	60	70	68	88	85	103	102	
Japan	19	21	20	19	16	22	21	23	21	12	15	8	19	14	18	25	17	
Korea	—	—	—	—	—	—	—	—	—	—	—	—	—	2	5	3	3	
Mexico	14	11	25	17	22	20	19	12	23	20	29	39	27	36	44	21	48	
New Zealand	14	17	6	6	4	9	21	16	15	12	10	7	12	13	10	0	7	
Peru	3	1	2	2	4	3	—	—	—	—	—	—	—	—	—	—	—	
Spain	59	57	59	58	56	73	80	88	61	54	59	73	101	90	84	96	93	
Sweden	18	27	20	22	29	20	29	2	12	15	10	11	12	9	14	10	13	
Taiwan	17	12	13	18	11	15	21	0	0	1	6	7	4	6	9	3	8	
United Kingdom	18	22	13	26	33	36	30	27	25	24	29	31	37	33	38	59	64	
Zimbabwe**	—	—	—	—	—	—	—	13	5	8	9	9	7	5	14	4	8	
Total	434	423	431	383	390	429	475	416	354	332	334	377	401	403	450	463	518	

*Enrollment for Monterey Bay began in 1998-1999; enrollment for San Marcos began in 1993-1994.

**Program in Zimbabwe started in spring 1991.

Table 121

Selected Characteristics of Students Enrolled in International Programs, 1981-1982 to 2000-2001

Enrollment Category	81-82	82-83	83-84	84-85	85-86	86-87	87-88	88-89	89-90	90-91
Grade point averages										
Pre-program	3.2	3.2	3.3	3.3	3.2	3.3	3.2	3.3	3.2	3.2
Percent by class level										
Junior	40.4	40.0	35.3	39.4	44.9	45.7	42.0	45.1	50.8	51.4
Senior	51.4	51.7	56.9	50.0	46.8	48.7	51.7	50.3	44.5	43.8
Graduate	8.2	8.3	7.8	10.6	8.3	5.6	6.3	4.6	4.7	3.7
Percent male	43.7	44.4	39.8	42.3	39.8	42.2	43.5	42.8	41.0	42.7
Average age	23.3	24.5	23.5	22.3	22.4	22.1	22.1	22.3	22.3	22.2
Percent ethnic underrepresented minority										
Black	1.4	1.0	0.7	0.7	1.2	1.2	1.3	0.5	2.1	0.5
Hispanic	11.7	6.5	7.3	6.2	8.1	6.7	8.6	7.7	10.3	9.1
Asian or Pacific Islander	3.0	5.2	5.0	5.8	4.3	7.2	7.3	5.6	4.4	4.4
Other non-White	0.2	—	—	0.9	0.5	0.5	0.5	2.1	1.2	1.9
Total	16.4	12.7	13.0	13.6	14.0	15.5	17.8	15.9	17.9	15.9
Percent receiving financial aid	66.1	53.0	52.8	50.7	47.3	49.0	44.6	44.1	53.0	49.6
Enrollment Category	91-92	92-93	93-94	94-95	95-96	96-97	97-98	98-99	99-00	00-01
Grade point averages										
Pre-program	3.2	3.2	3.1	3.2	3.1	3.2	3.2	3.2	3.2	3.2
Percent by class level										
Junior	53.9	46.6	42.5	38.6	38.5	39.9	43.7	47.6	44.7	45.4
Senior	40.9	45.8	53.3	54.2	48.3	46.4	45.6	42.0	44.1	42.7
Graduate	3.9	5.6	4.2	6.9	11.1	9.5	3.7	6.2	6.0	7.3
Percent male	42.1	50.8	37.7	36.8	41.1	39.2	35.5	34.2	39.8	35.9
Average age	21.7	21.9	22.0	23.0	23.0	23.0	22.0	22.0	22.0	22.0
Percent ethnic underrepresented minority										
Black	2.6	1.7	1.5	1.2	2.7	1.5	2.7	3.6	3.2	1.7
Hispanic	11.1	12.1	15.4	14.4	20.9	19.7	18.6	19.6	18.8	20.7
Asian or Pacific Islander	9.1	11.9	6.6	13.8	9.5	9.0	9.0	10.6	11.2	9.9
Other non-White	2.2	0.9	1.5	1.5	0.6	1.0	3.0	4.2	2.6	4.8
Total	25.0	26.6	25.0	30.9	33.7	31.2	33.3	38.0	35.8	37.1
Percent receiving financial aid	46.6	51.8	59.6	72.0	77.0	78.0	75.0	73.0	72.0	71.3

Table 122

Percent Distribution of International Programs Majors, 1982-1983 to 2000-2001

Major	82-83	83-84	84-85	85-86	86-87	87-88	88-89	89-90	90-91	91-92	92-93	93-94	94-95	95-96	96-97	97-98	98-99	99-00	00-01
Agriculture and Natural Resources	3.6	1.7	4.1	3.5	1.2	2.6	2.8	2.3	1.9	3.2	2.0	2.4	2.4	0.8	1.0	1.0	1.1	0.2	0.6
Anthropology	0.5	1.2	1.2	0.9	0.5	0.3	—	—	0.8	0.5	0.8	1.5	1.8	1.6	1.2	1.2	1.8	1.1	1.7
Architecture and Environmental Design	10.9	10.7	14.5	11.8	15.1	12.8	15.7	11.2	11.2	10.3	13.8	16.3	12.6	12.2	11.7	11.4	11.8	10.6	9.8
Area and Ethnic Studies	2.1	1.4	1.8	0.7	1.4	2.6	0.5	0.7	0.6	1.2	0.3	0.9	0.3	0.5	1.5	1.0	1.3	0.6	2.3
Art/Art History	7.0	5.0	5.1	8.7	5.6	3.4	4.6	5.6	4.4	5.8	6.8	5.1	5.9	7.4	5.7	6.0	8.9	7.0	7.3
Behavioral Science	—	0.5	0.5	0.7	0.5	0.3	—	—	—	—	—	—	—	—	—	—	—	0.2	—
Biological Sciences	2.3	3.1	1.8	3.8	1.4	3.1	1.5	2.3	2.1	1.9	1.7	3.0	3.0	1.9	3.0	2.7	2.7	2.2	1.9
Business and Management	17.1	18.5	16.1	12.3	14.8	15.1	11.8	13.1	12.8	13.5	16.9	11.8	15.9	6.9	11.7	10.4	14.0	11.0	11.8
Communications	2.6	3.1	2.8	4.3	3.9	6.8	7.7	4.4	6.1	6.9	4.8	3.9	2.9	5.8	3.7	4.0	5.6	5.8	4.6
Criminology	—	0.2	0.2	0.2	—	—	—	—	0.4	—	0.3	1.2	0.6	0.3	0.3	0.5	0.4	0.6	0.4
Dramatic Arts	—	—	0.2	0.2	0.5	0.3	0.5	0.3	0.4	0.5	—	—	0.3	0.3	0.3	0.5	0.9	0.9	2.3
Economics	1.6	1.2	1.8	3.1	0.7	1.0	2.1	0.7	1.7	1.2	0.8	0.6	0.3	0.5	1.0	0.2	0.9	1.3	0.6
Education and Child Development	0.5	0.9	2.5	0.2	1.6	1.3	1.8	1.9	1.5	1.5	2.5	1.8	1.8	5.8	3.7	5.0	3.3	1.7	4.6
Engineering and Computer Science	1.0	3.6	2.8	1.7	2.5	3.3	2.8	3.5	2.3	4.3	2.0	2.7	2.4	3.2	2.2	2.0	1.3	2.4	3.5
English/Comp. Lit./ Linguistics	3.4	3.8	5.5	2.8	3.7	3.7	4.6	6.8	6.9	6.7	6.8	7.2	9.6	5.0	6.9	7.5	6.4	7.8	5.0
Foreign Languages	20.7	23.0	19.8	18.4	20.0	18.5	17.0	17.3	15.6	14.2	15.0	14.8	16.2	15.1	17.5	17.9	12.2	15.4	14.5
Geography	1.0	0.9	0.7	1.2	0.5	1.3	0.5	0.7	0.6	0.5	1.4	0.3	1.2	1.3	1.3	0.2	0.9	0.2	0.4
Health Professions/ Nursing	0.5	—	0.2	—	0.5	0.3	0.5	0.3	0.2	0.7	0.3	0.6	—	0.5	0.3	1.0	0.9	0.6	1.2
History	3.4	2.6	1.8	3.1	3.7	1.8	2.3	3.1	3.4	4.6	2.3	2.4	2.7	3.7	2.7	1.2	0.9	4.5	3.9
Home Economics	—	0.2	0.2	—	0.5	—	—	0.7	0.4	1.5	0.8	—	0.6	0.3	1.0	1.2	—	0.6	0.4
Humanities	1.0	0.2	0.2	0.5	0.2	0.3	0.5	1.4	0.8	1.0	0.6	0.3	—	0.5	0.8	0.5	0.9	0.6	0.2
Liberal Studies	0.8	2.1	3.0	5.0	2.1	6.0	5.1	5.4	5.7	5.3	4.2	3.9	4.5	5.8	4.9	5.5	5.3	4.1	4.6
Mathematics	—	0.2	0.5	1.2	1.2	0.5	0.8	0.3	0.4	0.7	0.3	0.3	0.6	0.3	0.3	—	0.2	1.1	0.4
Music	2.1	0.5	0.5	0.5	0.9	1.6	0.8	0.5	0.6	0.7	1.7	0.9	1.2	1.6	0.8	2.0	1.6	3.2	1.5
Philosophy and Religious Studies	1.3	1.2	0.5	0.5	1.2	0.3	0.3	2.1	0.2	0.2	1.1	0.3	0.3	2.4	1.0	1.2	0.9	0.4	0.4
Physical Sciences	1.0	0.2	0.9	0.7	0.7	1.6	0.8	0.5	0.8	0.2	1.1	0.9	0.9	0.3	—	0.5	0.4	0.9	1.4
Political Science and Government	8.8	9.7	7.4	10.9	8.6	7.6	8.7	9.8	11.2	7.7	5.1	7.9	3.9	7.2	6.5	5.7	7.8	7.8	7.3
Psychology	4.9	2.1	1.6	1.4	3.0	0.8	3.1	3.1	2.7	2.4	3.4	4.2	3.6	4.3	6.2	3.5	3.6	4.3	3.5
Public Affairs and Social Welfare	0.3	—	0.2	0.2	0.7	—	0.3	0.5	0.4	—	1.1	0.3	0.9	0.3	0.3	1.2	0.7	0.4	0.6
Social Science	1.3	1.4	0.7	0.7	1.4	1.8	2.1	0.9	1.5	1.7	0.8	2.1	2.7	1.6	0.8	2.0	1.1	0.6	1.4
Social Work	—	0.5	0.5	0.7	1.2	1.0	0.5	0.7	1.5	1.0	1.1	1.8	0.6	2.1	1.2	2.0	2.0	1.9	1.5
Special Major	0.3	0.2	0.2	—	0.5	—	0.3	0.5	0.6	0.2	—	0.6	0.3	0.5	0.5	1.0	0.2	—	0.4
All Programs	100.0	100.0	100.0	100.0	100.0	100.0	100.0	100.0	100.0	100.0	100.0	100.0	100.0	100.0	100.0	100.0	100.0	100.0	100.0

Table 123

Gross General Fund Expenditures in International Programs

Fiscal Year	Expenditures	Annual FTE	Cost per FTE
1972-1973	\$ 514,542	313	\$ 1,644
1973-1974	586,418	308	1,904
1974-1975	608,013	326	1,865
1975-1976	645,096	340	1,897
1976-1977	771,847	353	2,187
1977-1978	849,409	375	2,265
1978-1979	907,768	432	2,101
1979-1980	1,029,034	384	2,680
1980-1981	1,098,940	369	2,978
1981-1982	1,152,565	461	2,500
1982-1983	1,175,078	416	2,824
1983-1984	1,198,365	439	2,731
1984-1985	1,340,380	457	2,933
1985-1986	1,669,930	431	3,872
1986-1987	1,603,200	458	3,500
1987-1988	1,847,222	404	4,572
1988-1989	1,810,740	422	4,291
1989-1990	2,097,690	485	4,325
1990-1991	2,191,482	521	4,206
1991-1992	2,000,144	458	4,367
1992-1993	1,985,987	389	5,105
1993-1994	1,568,895	365	4,298
1994-1995	1,950,829	367	5,316
1995-1996	2,344,112	415	5,648
1996-1997	2,142,302	442	4,847
1997-1998	2,412,985	443	5,447
1998-1999	2,452,318	495	4,954
1999-2000	2,213,819	463	4,781
2000-2001	2,925,472	570	5,132

Note: "Annual FTE" and "Cost per FTE" figures for 1999-2000 have been revised to reflect a standard of 15 term units attempted per student for that fiscal year instead of 16.5 units.