

Academic and Support Programs

Section IV



Introduction

Fall 2000 enrollment in undergraduate degree programs numbered 295,731 or about 80 percent of the total enrollment in degree programs. Students enrolled in graduate degree programs during fall 2000 numbered 43,224. Business and management was the largest undergraduate program; and the largest graduate program was education.

The majors comprising half the undergraduate enrollment in fall 2000 were business and management (18.2 percent), interdisciplinary studies (9.4 percent), engineering (7.0 percent), social sciences (6.9 percent), and computer sciences (6.8 percent). Nearly 10 percent of all undergraduates had not chosen a major and were identified as undeclared in the fall 2000 data.

The program interests of graduate students differed considerably from those of undergraduate students in fall 2000. Attracting the highest percentage of students were education (30.9 percent), business and management (11.8 percent), health professions (8.6 percent), and public affairs and services (8.3 percent).

Women in Degree Programs

The proportion of women among undergraduates in fall 2000 was 56.8 percent. This proportion varied greatly across the 20 major discipline divisions that summarize the 100-plus undergraduate degree programs supported by the CSU. For example, women accounted for the majority of enrollment in 15 of the 20 major discipline divisions. The female plurality was especially true in the health professions, home economics, psychology, and interdisciplinary studies where the ratio of women to men was more than 3 to 1. Women were extremely

underrepresented in engineering where men outnumbered women 5 to 1.

Women students represented more than 60 percent of enrollment in CSU graduate degree programs. Again, their plurality applied to 15 of the 20 major discipline divisions that summarize the graduate degrees offered by the CSU.

Racial/Ethnic Enrollment

Undergraduate enrollment in the 20 major disciplinary divisions varied by racial/ethnic status, but there were many similarities among the groups. Each group, for example, had the highest concentration in business and management. Further, most of the groups, in relative terms, had high concentrations in either interdisciplinary studies, social science, or engineering. Asians and Filipinos were distinguished by higher concentrations in computer science, biological science, and the health professions; the other ethnic groups were distinguished by higher concentrations in public affairs or social sciences.

Graduate enrollment in the 20 major disciplinary divisions also varied by racial/ethnic status. But, here again, there were many intergroup similarities. On balance, education and public affairs were the most frequently selected majors across groups. Asian Americans were an exception to the norm by being more heavily concentrated in engineering and business and management. Similarly, a significant percentage of Filipinos (25.3 percent of enrollment in graduate programs) were enrolled in the health professions.

Figure 9
Selected CSU Fall Enrollment by Discipline Division
as a Percentage of All Undergraduate Degree Programs, Fall 1980 to Fall 2000

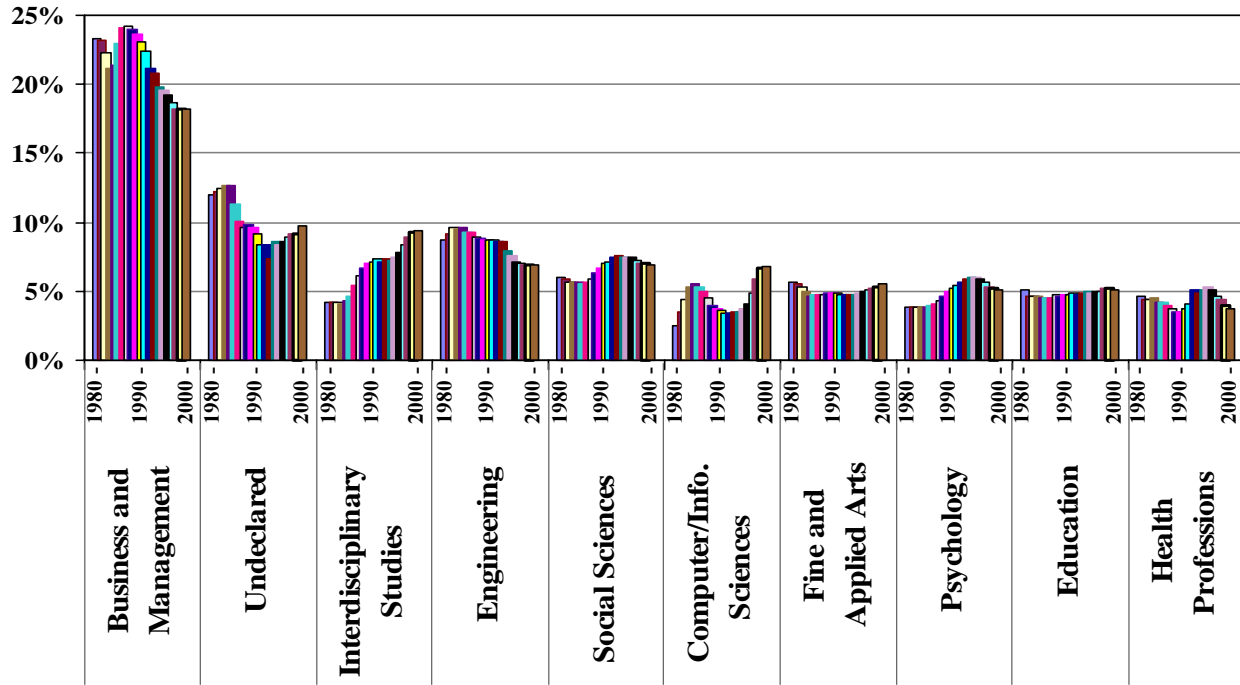


Figure 10
Selected CSU Fall Enrollment by Discipline Division
as a Percentage of All Graduate Degree Programs, Fall 1980 to Fall 2000

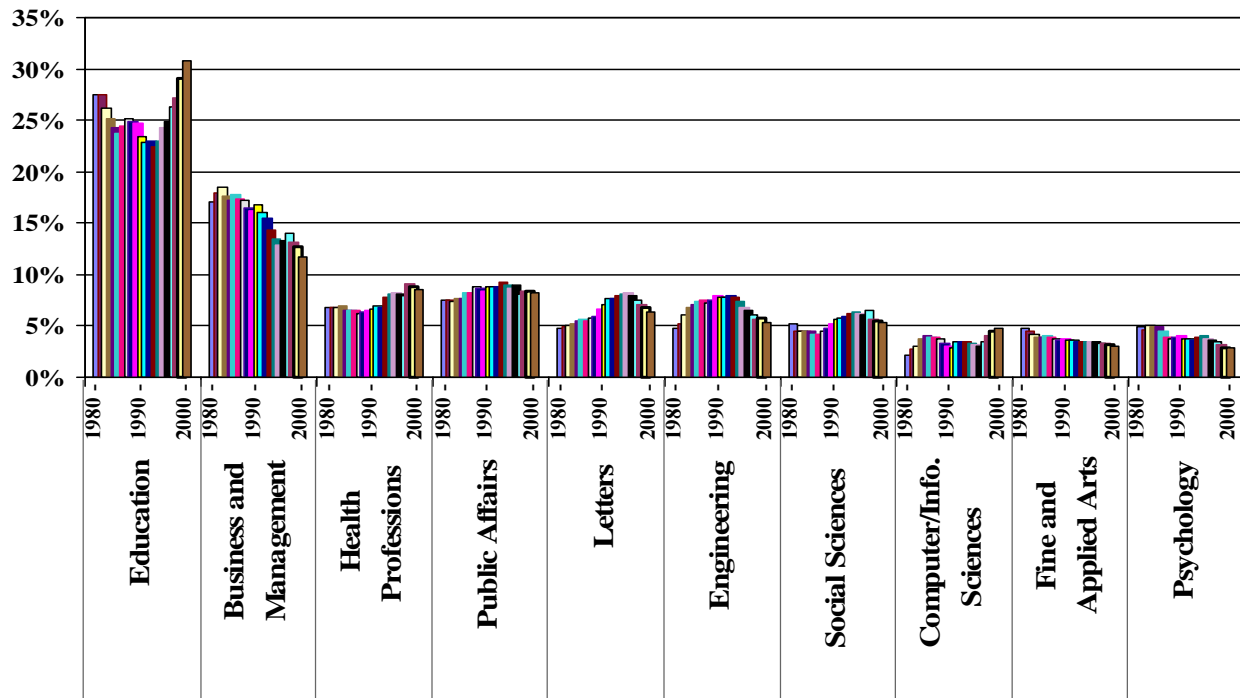


Figure 11
Enrollment in the CSU by Level of Degree Program
from Fall 1970

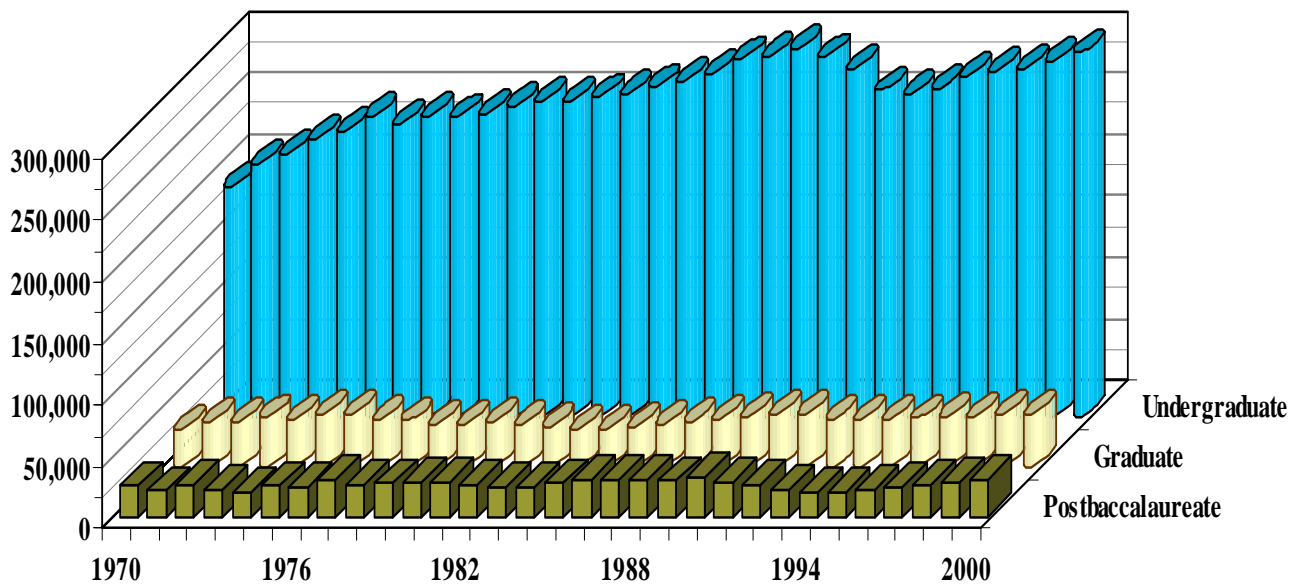


Table 79

Total Enrollment by Level of Degree Program,¹ from Fall 1960

Fall	Undergraduate Programs ¹	Graduate Programs ²	Other ³	Total Enrollment
1960	73,115	11,768	10,198	95,081
1961	81,930	12,198	11,859	105,987
1962	91,843	13,377	12,837	118,057
1963	102,838	15,665	14,605	133,108
1964	115,358	16,032	17,566	148,956
1965	118,460	18,706	17,761	154,927
1966	129,369	19,214	20,937	169,520
1967	141,711	22,438	21,452	185,601
1968	162,934	24,449	24,185	211,568
1969	171,573	26,012	27,252	224,837
1970	187,508	29,585	24,466	241,559
1971	205,052	36,501	20,528	262,081
1972	213,601	37,135	26,001	276,737
1973	226,190	39,349	21,094	286,633
1974	232,264	39,077	20,201	291,542
1975	243,911	42,478	24,502	310,891
1976	237,123	42,595	24,016	303,734
1977	244,297	37,913	30,170	312,380
1978	243,058	37,188	25,929	306,175
1979	245,577	34,591	26,633	306,801
1980	251,618	34,061	28,171	313,850
1981	256,350	35,369	27,846	319,565
1982	256,575	34,107	25,132	315,814
1983	259,295	31,725	22,880	313,900
1984	261,715	29,981	24,309	316,005
1985	267,373	30,717	26,536	324,626
1986	271,829	32,513	29,082	333,424
1987	278,887	34,652	29,237	342,776
1988	289,677	36,202	29,227	355,106
1989	293,525	38,737	28,576	360,838
1990	298,368	39,732	30,953	369,053
1991	291,787	41,908	28,209	361,904
1992	282,937	42,248	25,046	350,231
1993	265,162	38,836	21,641	325,639
1994	261,465	38,657	19,246	319,368
1995	266,637	38,744	20,223	325,604
1996	275,676	39,229	21,898	336,803
1997	279,762	40,334	23,683	343,779
1998	282,770	41,190	25,844	349,804
1999	288,997	42,036	28,223	359,256
2000	295,731	43,224	28,996	367,951

¹ Degree program level differs from student level; undergraduate degree program figures include postbaccalaureate students seeking a second bachelor's degree.

² Starting in 1990, joint doctorates are included in graduate programs.

³ Includes postbaccalaureate students seeking an education credential. Also includes CalStateTEACH as of fall 1999.

Table 80

Student Enrollment in Degree Programs, from All Campuses, Fall 2000 Profile

Discipline Division	Undergraduate ¹		Graduate		Total	
	Number	Percent	Number	Percent	Number	Percent
Agriculture and Natural Resources	5,574	1.9	278	0.6	5,852	1.7
Architecture and Environmental Design	2,389	0.8	272	0.6	2,661	0.8
Area Studies	234	0.1	118	0.3	352	0.1
Biological Sciences	12,615	4.3	913	2.1	13,528	4.0
Business and Management	53,720	18.2	5,089	11.8	58,809	17.4
Communications	12,088	4.1	478	1.1	12,566	3.7
Computer and Information Sciences	20,116	6.8	2,045	4.7	22,161	6.5
Education	14,997	5.1	13,344	30.9	28,341	8.4
Engineering	20,571	7.0	2,344	5.4	22,915	6.8
Fine and Applied Arts	16,301	5.5	1,342	3.1	17,643	5.2
Foreign Languages	2,033	0.7	429	1.0	2,462	0.7
Health Professions	11,093	3.8	3,698	8.6	14,791	4.4
Home Economics	2,695	0.9	607	1.4	3,302	1.0
Interdisciplinary Studies	27,676	9.4	765	1.8	28,441	8.4
Letters	11,300	3.8	2,762	6.4	14,062	4.1
Library	0	0.0	367	0.8	367	0.1
Mathematics	2,519	0.9	527	1.2	3,046	0.9
Physical Sciences	2,879	1.0	580	1.3	3,459	1.0
Psychology	15,209	5.1	1,248	2.9	16,457	4.9
Public Affairs	12,506	4.2	3,579	8.3	16,085	4.7
Social Sciences	20,334	6.9	2,305	5.3	22,639	6.7
Undeclared	28,882	9.8	134	0.3	29,016	8.6
Total	295,731	100.0	43,224	100.0	338,955	100.0

Note: Includes enrollment in the CSU Statewide Nursing Program.

¹ Degree program level differs from student level; undergraduate degree program figures include postbaccalaureate students seeking a second bachelor's degree.

Table 81
Enrollment in Undergraduate Programs* by Discipline Division and Gender, from Fall 1980

Discipline Division	Gender	1980	1981	1982	1983	1984	1985	1986	1987	1988	1989	1990
Agriculture and Natural Resources	Men	4,892	4,660	4,320	4,187	4,017	3,691	3,312	3,140	3,112	3,139	3,126
	Women	2,982	2,973	2,850	2,692	2,522	2,334	2,189	2,184	2,183	2,284	2,417
	Total	7,874	7,633	7,170	6,879	6,539	6,025	5,501	5,324	5,295	5,423	5,543
Architecture and Environmental Design	Men	1,808	1,685	1,440	1,523	1,565	1,554	1,585	1,674	1,722	1,798	1,739
	Women	610	625	615	758	765	777	896	1,082	1,223	1,368	1,446
	Total	2,418	2,310	2,055	2,281	2,330	2,331	2,481	2,756	2,945	3,166	3,185
Area Studies	Men	102	87	88	87	87	98	108	106	122	115	113
	Women	176	191	171	159	164	164	118	113	126	138	161
	Total	278	278	259	246	251	262	226	219	248	253	274
Biological Sciences	Men	5,250	4,917	4,743	4,756	4,652	4,738	4,706	4,631	4,645	4,648	4,877
	Women	5,136	5,176	5,121	5,292	5,472	5,459	5,231	5,169	5,436	5,510	5,728
	Total	10,386	10,093	9,864	10,048	10,124	10,197	9,937	9,800	10,081	10,158	10,605
Business and Management	Men	33,097	32,261	29,887	27,944	27,846	29,841	31,931	32,910	34,128	34,342	34,204
	Women	25,589	27,196	27,316	26,955	28,213	31,541	33,616	34,746	35,405	35,112	34,565
	Total	58,686	59,457	57,203	54,899	56,059	61,382	65,547	67,656	69,533	69,454	68,769
Communications	Men	4,406	4,256	4,272	4,716	4,698	4,790	4,902	5,006	5,285	5,370	5,445
	Women	5,182	5,255	5,640	6,480	6,499	6,704	6,927	7,214	7,458	7,517	7,536
	Total	9,588	9,511	9,912	11,196	11,197	11,494	11,829	12,220	12,743	12,887	12,981
Computer and Information Sciences	Men	4,163	5,672	6,972	8,374	8,907	8,983	8,745	8,417	7,701	7,299	7,293
	Women	2,225	3,453	4,445	5,501	5,578	5,233	4,813	4,360	3,794	3,564	3,468
	Total	6,388	9,125	11,417	13,875	14,485	14,216	13,558	12,777	11,495	10,863	10,761
Education	Men	6,142	5,937	5,986	6,264	6,263	6,523	6,541	7,212	7,177	7,331	7,332
	Women	6,626	6,021	5,933	5,861	5,575	5,662	5,740	6,117	6,362	6,543	6,910
	Total	12,768	11,958	11,919	12,125	11,838	12,185	12,281	13,329	13,539	13,874	14,242
Engineering	Men	19,659	20,730	21,502	21,328	21,795	21,404	21,853	21,401	21,977	22,209	22,331
	Women	2,318	2,684	3,082	3,274	3,323	3,362	3,514	3,402	3,477	3,457	3,548
	Total	21,977	23,414	24,584	24,602	25,118	24,766	25,367	24,803	25,454	25,666	25,879
Fine and Applied Arts	Men	5,679	5,615	5,363	5,270	4,983	5,129	5,187	5,467	5,893	6,057	6,385
	Women	8,457	8,473	8,288	7,591	7,199	7,484	7,671	7,877	8,214	8,080	8,167
	Total	14,136	14,088	13,651	12,861	12,182	12,613	12,858	13,344	14,107	14,137	14,552
Foreign Languages	Men	510	499	496	481	456	519	548	532	613	600	646
	Women	1,406	1,290	1,251	1,251	1,274	1,242	1,265	1,315	1,367	1,329	1,411
	Total	1,916	1,789	1,747	1,732	1,730	1,761	1,813	1,847	1,980	1,929	2,057
Health Professions	Men	1,695	1,578	1,518	1,557	1,534	1,622	1,593	1,609	1,658	1,546	1,771
	Women	9,888	9,869	9,830	10,055	9,421	9,419	9,203	8,845	8,527	8,678	9,328
	Total	11,583	11,447	11,348	11,612	10,955	11,041	10,796	10,454	10,185	10,224	11,099
Home Economics	Men	125	137	130	142	178	205	231	239	253	221	272
	Women	4,160	3,898	3,730	3,741	4,111	4,102	4,000	3,893	3,804	3,682	3,583
	Total	4,285	4,035	3,860	3,883	4,289	4,307	4,231	4,132	4,057	3,903	3,855
Letters	Men	2,490	2,767	2,687	2,486	2,735	3,028	3,248	3,520	3,798	4,056	4,334
	Women	4,270	4,667	4,744	4,389	4,679	5,204	5,775	6,431	6,969	7,296	7,473
	Total	6,760	7,434	7,431	6,875	7,414	8,232	9,023	9,951	10,767	11,352	11,807
Mathematics	Men	1,408	1,576	2,023	2,553	2,760	2,742	2,488	2,295	2,157	1,954	1,833
	Women	869	958	1,253	1,580	1,847	1,811	1,759	1,644	1,507	1,447	1,401
	Total	2,277	2,534	3,276	4,133	4,607	4,553	4,247	3,939	3,664	3,401	3,234
Physical Sciences	Men	3,572	3,774	3,857	3,886	3,704	3,571	3,437	3,167	2,970	2,844	2,744
	Women	1,260	1,400	1,440	1,469	1,428	1,341	1,219	1,182	1,160	1,174	1,173
	Total	4,832	5,174	5,297	5,355	5,132	4,912	4,656	4,349	4,130	4,018	3,917
Psychology	Men	3,160	3,071	3,026	2,954	2,926	3,068	3,138	3,269	3,548	3,633	3,826
	Women	6,554	6,829	6,930	7,102	7,076	7,610	8,045	8,811	9,997	10,880	11,704
	Total	9,714	9,900	9,956	10,056	10,002	10,678	11,183	12,080	13,545	14,513	15,530
Public Affairs and Services	Men	4,246	3,854	3,533	3,609	3,765	4,007	4,038	4,438	4,553	4,632	4,924
	Women	5,848	5,383	4,915	4,618	4,589	4,742	4,686	4,925	5,384	5,467	5,762
	Total	10,094	9,237	8,448	8,227	8,354	8,749	8,724	9,363	9,937	10,099	10,686
Social Sciences	Men	7,814	7,743	7,681	7,922	7,988	8,008	8,545	9,053	9,933	10,515	11,158
	Women	7,257	7,269	6,971	6,838	6,793	6,780	6,938	7,473	8,411	8,994	9,624
	Total	15,071	15,012	14,652	14,760	14,781	14,788	15,483	16,526	18,344	19,509	20,782
Interdisciplinary Studies	Men	2,036	1,950	1,943	1,902	1,923	2,212	2,418	2,919	3,211	3,663	3,908
	Women	8,513	8,687	8,660	8,768	9,309	10,303	12,194	14,191	16,045	16,842	17,514
	Total	10,549	10,637	10,603	10,670	11,232	12,515	14,612	17,110	19,256	20,505	21,422
Undeclared Bachelor's	Men	12,679	13,367	14,429	15,407	15,736	14,522	12,927	12,141	12,885	12,668	12,230
	Women	17,359	17,917	17,494	17,573	17,360	15,844	14,549	14,767	15,487	15,523	14,958
	Total	30,038	31,284	31,923	32,980	33,096	30,366	27,476	26,908	28,372	28,191	27,188
Total, All Programs	Men	124,933	126,136	125,896	127,348	128,518	130,255	131,481	133,146	137,341	138,640	140,491
	Women	126,685	130,214	130,679	131,947	133,197	137,118	140,348	145,741	152,336	154,885	157,877
	Total	251,618	256,350	256,575	259,295	261,715	267,373	271,829	278,887	289,677	293,525	298,368

*Postbaccalaureate students seeking a second bachelor's degree are included in undergraduate programs.
 Note: Data prior to 1998 exclude enrollment in the CSU Statewide Nursing Program.

Table 81 (continued)

Enrollment in Undergraduate Programs* by Discipline Division and Gender, from Fall 1980

Discipline Division	Gender	1991	1992	1993	1994	1995	1996	1997	1998	1999	2000
Agriculture and Natural Resources	Men	3,085	3,034	2,930	2,903	2,907	2,959	2,989	2,941	2,785	2,726
	Women	2,338	2,330	2,249	2,389	2,511	2,628	2,731	2,724	2,726	2,848
	Total	5,423	5,364	5,179	5,292	5,418	5,587	5,720	5,665	5,511	5,574
Architecture and Environmental Design	Men	1,755	1,617	1,449	1,298	1,207	1,197	1,180	1,166	1,239	1,267
	Women	1,420	1,320	1,234	1,170	1,143	1,047	1,051	1,016	1,079	1,122
	Total	3,175	2,937	2,683	2,468	2,350	2,244	2,231	2,182	2,318	2,389
Area Studies	Men	123	120	107	123	113	115	109	119	100	92
	Women	165	175	173	164	150	169	149	135	139	142
	Total	288	295	280	287	263	284	258	254	239	234
Biological Sciences	Men	5,145	5,321	5,626	5,920	6,260	6,376	6,070	5,527	5,129	4,601
	Women	5,911	6,116	6,431	7,159	8,068	8,686	8,864	8,677	8,403	8,014
	Total	11,056	11,437	12,057	13,079	14,328	15,062	14,934	14,204	13,532	12,615
Business and Management	Men	32,385	29,434	27,199	25,265	25,558	25,933	25,194	24,423	24,655	24,975
	Women	32,829	30,381	28,114	26,390	26,673	26,994	26,934	27,228	27,873	28,745
	Total	65,214	59,815	55,313	51,655	52,231	52,927	52,128	51,651	52,528	53,720
Communications	Men	5,434	5,218	4,808	4,364	4,208	4,408	4,306	4,390	4,788	5,044
	Women	7,200	6,472	5,771	5,479	5,497	5,673	5,892	5,982	6,589	7,044
	Total	12,634	11,690	10,579	9,843	9,705	10,081	10,198	10,372	11,377	12,088
Computer and Information Sciences	Men	6,896	6,591	6,467	6,534	7,236	8,188	9,678	11,712	13,365	14,021
	Women	3,171	3,062	2,759	2,627	2,674	3,110	3,936	5,079	5,951	6,095
	Total	10,067	9,653	9,226	9,161	9,910	11,298	13,614	16,791	19,316	20,116
Education	Men	6,851	6,479	6,012	5,842	5,510	5,661	5,611	5,629	5,528	5,431
	Women	7,250	6,949	6,988	7,137	7,450	8,014	8,390	8,992	9,407	9,566
	Total	14,101	13,428	13,000	12,979	12,960	13,675	14,001	14,621	14,935	14,997
Engineering	Men	21,906	20,866	19,407	17,796	17,243	16,894	16,670	16,618	16,922	17,282
	Women	3,585	3,526	3,308	3,005	2,867	2,839	2,839	2,944	3,060	3,289
	Total	25,491	24,392	22,715	20,801	20,110	19,733	19,509	19,562	19,982	20,571
Fine and Applied Arts	Men	6,227	6,139	5,935	5,874	6,237	6,424	6,648	6,731	7,010	7,329
	Women	7,794	7,386	6,730	6,473	6,758	7,158	7,504	7,897	8,365	8,972
	Total	14,021	13,525	12,665	12,347	12,995	13,582	14,152	14,628	15,375	16,301
Foreign Languages	Men	659	678	671	699	749	724	784	748	737	697
	Women	1,348	1,392	1,347	1,319	1,355	1,433	1,513	1,488	1,396	1,336
	Total	2,007	2,070	2,018	2,018	2,104	2,157	2,297	2,236	2,133	2,033
Health Professions	Men	2,083	2,436	2,618	2,936	3,138	3,016	2,700	2,300	1,938	1,702
	Women	9,875	11,955	10,363	10,384	10,951	10,866	10,245	10,082	9,656	9,391
	Total	11,958	14,391	12,981	13,320	14,089	13,882	12,945	12,382	11,594	11,093
Home Economics	Men	243	223	238	263	272	273	294	293	253	247
	Women	3,313	2,957	2,622	2,461	2,368	2,443	2,485	2,509	2,468	2,448
	Total	3,556	3,180	2,860	2,724	2,640	2,716	2,779	2,802	2,721	2,695
Letters	Men	4,417	4,381	4,143	4,093	4,100	4,114	4,039	3,970	3,908	3,971
	Women	7,704	7,425	6,894	6,692	6,733	7,005	7,121	7,037	7,173	7,329
	Total	12,121	11,806	11,037	10,785	10,833	11,119	11,160	11,007	11,081	11,300
Mathematics	Men	1,725	1,600	1,457	1,451	1,398	1,359	1,353	1,266	1,248	1,313
	Women	1,324	1,220	1,084	1,054	1,067	1,096	1,111	1,132	1,220	1,206
	Total	3,049	2,820	2,541	2,505	2,465	2,455	2,464	2,398	2,468	2,519
Physical Sciences	Men	2,587	2,416	2,358	2,389	2,304	2,270	2,137	1,889	1,745	1,666
	Women	1,138	1,127	1,169	1,311	1,290	1,403	1,406	1,215	1,235	1,213
	Total	3,725	3,543	3,527	3,700	3,594	3,673	3,543	3,104	2,980	2,879
Psychology	Men	3,986	4,056	4,014	4,011	4,095	4,074	3,907	3,595	3,422	3,439
	Women	11,841	11,868	11,623	11,559	11,793	12,164	11,999	11,526	11,547	11,770
	Total	15,827	15,924	15,637	15,570	15,888	16,238	15,906	15,121	14,969	15,209
Public Affairs and Services	Men	5,159	5,383	5,501	5,425	5,600	5,818	5,736	5,428	5,269	5,001
	Women	6,049	6,256	6,269	6,323	6,873	7,436	7,548	7,432	7,466	7,505
	Total	11,208	11,639	11,770	11,748	12,473	13,254	13,284	12,860	12,735	12,506
Social Sciences	Men	11,088	11,099	10,448	10,113	10,287	10,348	9,996	9,574	9,615	9,581
	Women	9,801	10,034	9,558	9,411	9,655	10,185	10,321	10,212	10,508	10,753
	Total	20,889	21,133	20,006	19,524	19,942	20,533	20,317	19,786	20,123	20,334
Interdisciplinary Studies	Men	3,990	3,948	3,991	4,078	4,309	4,665	4,706	4,999	5,145	5,208
	Women	17,480	16,233	15,533	14,976	15,624	16,884	18,629	20,220	21,613	22,468
	Total	21,470	20,181	19,524	19,054	19,933	21,549	23,335	25,219	26,758	27,676
Undeclared Bachelor's	Men	11,044	10,459	8,801	10,144	9,793	10,225	10,648	10,844	11,070	12,277
	Women	13,463	13,255	10,763	12,461	12,613	13,402	14,339	15,081	15,252	16,605
	Total	24,507	23,714	19,564	22,605	22,406	23,627	24,987	25,925	26,322	28,882
Total, All Programs	Men	136,788	131,498	124,180	121,521	122,524	125,041	124,755	124,162	125,871	127,870
	Women	154,999	151,439	140,982	139,944	144,113	150,635	155,007	158,608	163,126	167,861
	Total	291,787	282,937	265,162	261,465	266,637	275,676	279,762	282,770	288,997	295,731

*Includes postbaccalaureate students seeking a second bachelor's degree. As of fall 1998, includes enrollment in the CSU Statewide Nursing Program.

Table 82
Enrollment in Master's Programs by Discipline Division and Gender, from Fall 1980

Discipline Division	Gender	1980	1981	1982	1983	1984	1985	1986	1987	1988	1989	1990
Agriculture and Natural Resources	Men	272	266	232	207	172	152	145	134	142	157	160
	Women	66	114	85	87	75	75	65	71	80	90	99
	Total	338	380	317	294	247	227	210	205	222	247	259
Architecture and Environmental Design	Men	138	155	130	120	122	153	185	179	192	179	200
	Women	76	85	69	56	60	77	108	113	135	122	112
	Total	214	240	199	176	182	230	293	292	327	301	312
Area Studies	Men	31	27	21	29	42	37	30	37	47	48	43
	Women	42	40	39	28	37	24	33	36	43	44	42
	Total	73	67	60	57	79	61	63	73	90	92	85
Biological Sciences	Men	614	512	517	414	364	372	343	369	377	385	397
	Women	420	435	393	380	381	357	363	353	348	396	406
	Total	1,034	947	910	794	745	729	706	722	725	781	803
Business and Management	Men	3,757	3,953	3,918	3,475	3,153	3,277	3,377	3,591	3,610	3,761	4,009
	Women	2,048	2,408	2,395	2,127	2,026	2,198	2,243	2,351	2,364	2,507	2,675
	Total	5,805	6,361	6,313	5,602	5,179	5,475	5,620	5,942	5,974	6,268	6,684
Communications	Men	160	162	139	140	132	133	126	151	148	142	159
	Women	183	163	185	202	176	210	218	257	261	241	269
	Total	343	325	324	342	308	343	344	408	409	383	428
Computer and Information Sciences	Men	507	626	689	779	789	818	845	877	817	816	813
	Women	240	333	346	402	423	387	419	405	386	366	340
	Total	747	959	1,035	1,181	1,212	1,205	1,264	1,282	1,203	1,182	1,153
Education	Men	2,664	2,753	2,489	2,183	1,901	1,939	2,132	2,212	2,116	2,301	2,186
	Women	6,674	6,962	6,419	5,801	5,397	5,348	5,827	6,509	6,894	7,296	7,134
	Total	9,338	9,715	8,908	7,984	7,298	7,287	7,959	8,721	9,010	9,597	9,320
Engineering	Men	1,518	1,730	1,875	1,952	1,901	2,009	2,174	2,204	2,405	2,714	2,694
	Women	102	134	183	202	237	248	256	294	317	364	411
	Total	1,620	1,864	2,058	2,154	2,138	2,257	2,430	2,498	2,722	3,078	3,105
Fine and Applied Arts	Men	657	659	592	481	440	475	509	520	520	586	556
	Women	964	909	846	738	728	769	747	781	807	860	855
	Total	1,621	1,568	1,438	1,219	1,168	1,244	1,256	1,301	1,327	1,446	1,411
Foreign Languages	Men	78	73	65	57	54	55	81	75	78	93	90
	Women	229	204	176	162	163	185	177	177	180	210	218
	Total	307	277	241	219	217	240	258	252	258	303	308
Health Professions	Men	354	349	360	344	268	284	316	322	341	383	443
	Women	1,984	2,051	1,937	1,874	1,681	1,731	1,779	1,851	1,984	2,151	2,194
	Total	2,338	2,400	2,297	2,218	1,949	2,015	2,095	2,173	2,325	2,534	2,637
Home Economics	Men	19	30	37	33	34	23	25	20	25	22	28
	Women	446	476	425	414	337	340	324	317	311	286	313
	Total	465	506	462	447	371	363	349	337	336	308	341
Letters	Men	582	607	582	558	570	598	625	704	786	867	944
	Women	1,034	1,148	1,154	1,091	1,076	1,133	1,170	1,277	1,374	1,706	1,871
	Total	1,616	1,755	1,736	1,649	1,646	1,731	1,795	1,981	2,160	2,573	2,815
Library Science	Men	21	20	13	20	21	32	31	36	42	47	53
	Women	130	138	92	70	87	119	147	165	194	206	202
	Total	151	158	105	90	108	151	178	201	236	253	255
Mathematics	Men	166	168	173	173	192	226	276	307	298	309	312
	Women	104	90	90	93	91	132	158	172	169	184	185
	Total	270	258	263	266	283	358	434	479	467	493	497
Physical Sciences	Men	525	501	521	515	502	510	511	537	591	603	505
	Women	170	150	160	168	156	188	198	209	206	217	167
	Total	695	651	681	663	658	698	709	746	797	820	672
Psychology	Men	692	656	661	535	501	433	405	416	434	451	438
	Women	976	967	1,083	1,031	985	931	857	870	994	1,099	1,063
	Total	1,668	1,623	1,744	1,566	1,486	1,364	1,262	1,286	1,428	1,550	1,501
Public Affairs and Services	Men	1,091	1,082	1,054	1,023	920	973	1,057	1,133	1,116	1,130	1,223
	Women	1,460	1,561	1,439	1,393	1,383	1,555	1,614	1,902	2,022	2,137	2,301
	Total	2,551	2,643	2,493	2,416	2,303	2,528	2,671	3,035	3,138	3,267	3,524
Social Sciences	Men	1,002	908	903	821	768	721	736	842	936	1,109	1,221
	Women	753	689	641	584	588	584	647	707	778	908	1,001
	Total	1,755	1,597	1,544	1,405	1,356	1,305	1,383	1,549	1,714	2,017	2,222
Interdisciplinary Studies	Men	163	177	167	168	147	157	178	177	190	204	259
	Women	195	225	191	188	174	186	198	214	262	289	293
	Total	358	402	358	356	321	343	376	391	452	493	552
Undeclared Master's	Men	280	235	212	234	294	245	395	398	349	297	331
	Women	474	438	409	373	433	318	463	380	533	454	517
	Total	754	673	621	607	727	563	858	778	882	751	848
Total, All Programs	Men	15,291	15,649	15,350	14,261	13,287	13,622	14,502	15,241	15,560	16,604	17,064
	Women	18,770	19,720	18,757	17,464	16,694	17,095	18,011	19,411	20,642	22,133	22,668
	Total	34,061	35,369	34,107	31,725	29,981	30,717	32,513	34,652	36,202	38,737	39,732

Table 82 (continued)

Enrollment in Master's Programs by Discipline Division and Gender, from Fall 1980

Discipline Division	Gender	1991	1992	1993	1994	1995	1996	1997	1998	1999	2000
Agriculture and Natural Resources	Men	178	157	125	108	125	125	125	122	121	121
	Women	97	109	101	105	108	100	108	129	141	156
	Total	275	266	226	213	233	225	233	251	262	277
Architecture and Environmental Design	Men	189	199	169	167	189	196	170	167	155	132
	Women	108	140	112	128	141	143	136	134	142	136
	Total	297	339	281	295	330	339	306	301	297	268
Area Studies	Men	52	59	64	66	58	71	75	69	58	47
	Women	43	63	54	69	69	67	67	70	69	71
	Total	95	122	118	135	127	138	142	139	127	118
Biological Sciences	Men	395	411	445	453	436	449	390	385	345	351
	Women	403	409	443	474	476	500	534	535	513	522
	Total	798	820	888	927	912	949	924	920	858	873
Business and Management	Men	3,990	3,850	3,233	3,038	2,879	2,959	3,150	3,040	3,011	2,834
	Women	2,758	2,631	2,328	2,167	2,127	2,266	2,480	2,357	2,368	2,252
	Total	6,748	6,481	5,561	5,205	5,006	5,225	5,630	5,397	5,379	5,086
Communications	Men	165	172	152	169	160	181	178	176	164	172
	Women	307	296	269	236	227	284	296	308	287	306
	Total	472	468	421	405	387	465	474	484	451	478
Computer and Information Sciences	Men	1,024	1,013	967	880	867	809	913	1,069	1,224	1,305
	Women	429	434	390	387	393	396	458	580	664	739
	Total	1,453	1,447	1,357	1,267	1,260	1,205	1,371	1,649	1,888	2,044
Education	Men	2,316	2,344	2,145	2,162	2,432	2,571	2,775	2,936	3,136	3,363
	Women	7,246	7,227	6,585	6,549	6,876	7,077	7,702	8,150	8,930	9,849
	Total	9,562	9,571	8,730	8,711	9,308	9,648	10,477	11,086	12,066	13,212
Engineering	Men	2,858	2,856	2,585	2,359	2,215	2,083	1,975	1,884	1,894	1,818
	Women	424	458	423	442	416	455	471	434	495	504
	Total	3,282	3,314	3,008	2,801	2,631	2,538	2,446	2,318	2,389	2,322
Fine and Applied Arts	Men	579	536	523	525	526	549	520	531	494	522
	Women	931	901	838	801	803	831	825	821	831	820
	Total	1,510	1,437	1,361	1,326	1,329	1,380	1,345	1,352	1,325	1,342
Foreign Languages	Men	127	110	106	107	96	106	106	130	96	129
	Women	229	238	214	238	245	265	269	263	274	300
	Total	356	348	320	345	341	371	375	393	370	429
Health Professions	Men	548	534	573	586	575	560	619	649	668	699
	Women	2,360	2,313	2,435	2,539	2,612	2,623	2,588	3,060	3,002	2,959
	Total	2,908	2,847	3,008	3,125	3,187	3,183	3,207	3,709	3,670	3,658
Home Economics	Men	117	120	117	108	117	97	101	84	106	92
	Women	566	556	580	584	625	590	573	546	519	515
	Total	683	676	697	692	742	687	674	630	625	607
Letters	Men	1,140	1,150	1,081	1,070	1,106	1,100	1,042	992	958	954
	Women	2,077	2,077	2,003	2,075	2,078	2,014	1,971	1,952	1,878	1,803
	Total	3,217	3,227	3,084	3,145	3,184	3,114	3,013	2,944	2,836	2,757
Library Science	Men	78	74	67	74	62	64	65	84	86	84
	Women	243	250	251	240	210	189	214	245	247	283
	Total	321	324	318	314	272	253	279	329	333	367
Mathematics	Men	312	335	281	309	316	284	287	286	287	301
	Women	192	192	175	191	196	208	200	200	212	225
	Total	504	527	456	500	512	492	487	486	499	526
Physical Sciences	Men	511	473	490	492	450	444	425	381	352	353
	Women	191	202	215	229	232	230	209	206	222	207
	Total	702	675	705	721	682	674	634	587	574	560
Psychology	Men	466	406	421	425	392	375	351	322	289	275
	Women	1,126	1,068	1,098	1,079	988	1,014	983	933	868	911
	Total	1,592	1,474	1,519	1,504	1,380	1,389	1,334	1,255	1,157	1,186
Public Affairs and Services	Men	1,238	1,243	1,154	1,140	1,126	1,136	1,054	1,058	1,049	1,041
	Women	2,437	2,462	2,436	2,344	2,246	2,394	2,213	2,384	2,456	2,535
	Total	3,675	3,705	3,590	3,484	3,372	3,530	3,267	3,442	3,505	3,576
Social Sciences	Men	1,382	1,369	1,324	1,334	1,288	1,240	1,288	1,215	1,164	1,102
	Women	1,032	1,090	1,102	1,093	1,127	1,134	1,327	1,123	1,132	1,177
	Total	2,414	2,459	2,426	2,427	2,415	2,374	2,615	2,338	2,296	2,279
Interdisciplinary Studies	Men	297	332	328	313	317	325	313	310	279	306
	Women	370	400	412	477	507	503	512	549	509	459
	Total	667	732	740	790	824	828	825	859	788	765
Undeclared Master's	Men	136	140	10	1	31	2	12	14	24	41
	Women	241	204	12	4	37	4	33	56	61	93
	Total	377	344	22	5	68	6	45	70	85	134
Total, All Programs	Men	18,098	17,883	16,360	15,886	15,763	15,726	15,934	15,904	15,960	16,042
	Women	23,810	23,720	22,476	22,451	22,739	23,287	24,169	25,035	25,820	26,822
	Total	41,908	41,603	38,836	38,337	38,502	39,013	40,103	40,939	41,780	42,864

Note: Joint doctoral degree majors are not included in discipline division totals beginning fall 1992. As of fall 1998, enrollment includes the CSU Statewide Nursing Program. To maintain continuity with other tables in this section, master's data exclude International Programs enrollment.

Table 83

Enrollment by Degree Program Level and Discipline Division, Fall 2000 Profile

Discipline Division	Undergraduate	Graduate	Total	Discipline Division	Undergraduate	Graduate	Total
Bakersfield				Fresno			
Undeclared	488	0	488	Undeclared	2,403	0	2,403
Agriculture	0	0	0	Agriculture	870	32	902
Architecture	0	0	0	Architecture	1	0	1
Area Studies	0	0	0	Area Studies	0	0	0
Biological Sciences	219	0	219	Biological Sciences	541	38	579
Business and Management	677	65	742	Business and Management	2,120	130	2,250
Communications	181	0	181	Communications	374	24	398
Education	224	217	441	Education	676	467	1,143
Engineering	0	0	0	Engineering	849	22	871
Fine and Applied Arts	124	0	124	Fine and Applied Arts	565	42	607
Foreign Languages	35	0	35	Foreign Languages	78	21	99
Health Professions	230	30	260	Health Professions	909	380	1,289
Home Economics	0	0	0	Home Economics	36	77	113
Information Sciences	171	0	171	Information Sciences	549	70	619
Interdisciplinary Studies	1,060	1	1,061	Interdisciplinary Studies	2,426	8	2,434
Letters	194	16	210	Letters	486	124	610
Library	0	0	0	Library	0	0	0
Mathematics	85	0	85	Mathematics	108	7	115
Physical Sciences	67	1	68	Physical Sciences	180	33	213
Psychology	397	34	431	Psychology	603	35	638
Public Affairs	279	78	357	Public Affairs	926	209	1,135
Social Sciences	408	31	439	Social Sciences	873	108	981
Total	4,839	473	5,312	Total	15,573	1,827	17,400
Chico				Fullerton			
Undeclared	1,850	0	1,850	Undeclared	2,917	0	2,917
Agriculture	378	0	378	Agriculture	0	0	0
Architecture	0	8	8	Architecture	0	0	0
Area Studies	25	0	25	Area Studies	79	36	115
Biological Sciences	361	36	397	Biological Sciences	821	63	884
Business and Management	2,235	74	2,309	Business and Management	5,956	472	6,428
Communications	944	47	991	Communications	1,758	51	1,809
Education	678	192	870	Education	1,712	1,126	2,838
Engineering	1,007	3	1,010	Engineering	439	116	555
Fine and Applied Arts	616	21	637	Fine and Applied Arts	1,631	172	1,803
Foreign Languages	97	0	97	Foreign Languages	159	45	204
Health Professions	353	50	403	Health Professions	395	121	516
Home Economics	77	18	95	Home Economics	0	0	0
Information Sciences	553	153	706	Information Sciences	1,577	220	1,797
Interdisciplinary Studies	1,557	50	1,607	Interdisciplinary Studies	1,355	101	1,456
Letters	728	52	780	Letters	696	202	898
Library	0	0	0	Library	0	0	0
Mathematics	118	0	118	Mathematics	178	64	242
Physical Sciences	136	14	150	Physical Sciences	173	52	225
Psychology	598	82	680	Psychology	1,094	50	1,144
Public Affairs	614	52	666	Public Affairs	1,254	95	1,349
Social Sciences	1,090	97	1,187	Social Sciences	1,375	268	1,643
Total	14,015	949	14,964	Total	23,569	3,254	26,823
Dominguez Hills				Hayward			
Undeclared	703	2	705	Undeclared	855	0	855
Agriculture	0	0	0	Agriculture	0	0	0
Architecture	0	0	0	Architecture	0	0	0
Area Studies	0	0	0	Area Studies	4	0	4
Biological Sciences	231	25	256	Biological Sciences	401	35	436
Business and Management	1,139	148	1,287	Business and Management	2,799	624	3,423
Communications	189	0	189	Communications	237	36	273
Education	122	1,510	1,632	Education	233	574	807
Engineering	0	25	25	Engineering	61	0	61
Fine and Applied Arts	187	0	187	Fine and Applied Arts	542	29	571
Foreign Languages	108	0	108	Foreign Languages	28	0	28
Health Professions	1,182	411	1,593	Health Professions	428	83	511
Home Economics	0	51	51	Home Economics	0	0	0
Information Sciences	447	0	447	Information Sciences	730	296	1,026
Interdisciplinary Studies	1,823	2	1,825	Interdisciplinary Studies	1,136	5	1,141
Letters	202	130	332	Letters	242	76	318
Library	0	0	0	Library	0	0	0
Mathematics	75	19	94	Mathematics	78	59	137
Physical Sciences	48	0	48	Physical Sciences	88	22	110
Psychology	463	148	611	Psychology	774	0	774
Public Affairs	470	132	602	Public Affairs	333	192	525
Social Sciences	545	63	608	Social Sciences	614	113	727
Total	7,934	2,666	10,600	Total	9,583	2,144	11,727

Table 83 (continued)

Enrollment by Degree Program Level and Discipline Division, Fall 2000 Profile

Discipline Division	Undergraduate	Graduate	Total	Discipline Division	Undergraduate	Graduate	Total
Humboldt				Maritime Academy			
Undeclared	581	1	582	Undeclared	78	0	78
Agriculture	784	92	876	Agriculture	0	0	0
Architecture	0	0	0	Architecture	0	0	0
Area Studies	0	0	0	Area Studies	0	0	0
Biological Sciences	697	41	738	Biological Sciences	0	0	0
Business and Management	325	26	351	Business and Management	81	0	81
Communications	137	0	137	Communications	0	0	0
Education	199	61	260	Education	0	0	0
Engineering	193	0	193	Engineering	235	0	235
Fine and Applied Arts	660	44	704	Fine and Applied Arts	0	0	0
Foreign Languages	56	0	56	Foreign Languages	0	0	0
Health Professions	157	0	157	Health Professions	0	0	0
Home Economics	0	0	0	Home Economics	0	0	0
Information Sciences	173	0	173	Information Sciences	0	0	0
Interdisciplinary Studies	1,039	40	1,079	Interdisciplinary Studies	258	0	258
Letters	331	53	384	Letters	0	0	0
Library	0	0	0	Library	0	0	0
Mathematics	74	0	74	Mathematics	0	0	0
Physical Sciences	171	0	171	Physical Sciences	0	0	0
Psychology	315	69	384	Psychology	0	0	0
Public Affairs	93	0	93	Public Affairs	0	0	0
Social Sciences	601	41	642	Social Sciences	0	0	0
Total	6,586	468	7,054	Total	652	0	652
Long Beach				Monterey Bay			
Undeclared	2,347	0	2,347	Undeclared	333	0	333
Agriculture	0	0	0	Agriculture	0	0	0
Architecture	158	0	158	Architecture	0	0	0
Area Studies	23	14	37	Area Studies	0	0	0
Biological Sciences	1,262	54	1,316	Biological Sciences	0	0	0
Business and Management	4,359	295	4,654	Business and Management	252	0	252
Communications	796	0	796	Communications	344	0	344
Education	853	561	1,414	Education	0	63	63
Engineering	1,805	336	2,141	Engineering	0	0	0
Fine and Applied Arts	2,039	174	2,213	Fine and Applied Arts	196	0	196
Foreign Languages	160	58	218	Foreign Languages	0	0	0
Health Professions	1,428	495	1,923	Health Professions	0	0	0
Home Economics	721	117	838	Home Economics	0	0	0
Information Sciences	1,803	211	2,014	Information Sciences	0	0	0
Interdisciplinary Studies	2,190	74	2,264	Interdisciplinary Studies	807	27	834
Letters	1,299	237	1,536	Letters	239	0	239
Library	0	0	0	Library	0	0	0
Mathematics	182	51	233	Mathematics	0	0	0
Physical Sciences	161	42	203	Physical Sciences	1	0	1
Psychology	1,479	47	1,526	Psychology	0	0	0
Public Affairs	1,086	595	1,681	Public Affairs	60	0	60
Social Sciences	1,400	132	1,532	Social Sciences	173	0	173
Total	25,551	3,493	29,044	Total	2,405	90	2,495
Los Angeles				Northridge			
Undeclared	1,517	109	1,626	Undeclared	2,013	0	2,013
Agriculture	0	0	0	Agriculture	0	0	0
Architecture	0	0	0	Architecture	0	0	0
Area Studies	35	11	46	Area Studies	0	0	0
Biological Sciences	501	39	540	Biological Sciences	1,110	55	1,165
Business and Management	2,245	208	2,453	Business and Management	4,762	242	5,004
Communications	334	0	334	Communications	1,169	57	1,226
Education	1,865	1,443	3,308	Education	1,286	1,178	2,464
Engineering	684	108	792	Engineering	749	218	967
Fine and Applied Arts	606	205	811	Fine and Applied Arts	1,441	144	1,585
Foreign Languages	148	63	211	Foreign Languages	112	20	132
Health Professions	737	182	919	Health Professions	1,027	342	1,369
Home Economics	101	57	158	Home Economics	321	78	399
Information Sciences	1,057	78	1,135	Information Sciences	1,514	84	1,598
Interdisciplinary Studies	465	3	468	Interdisciplinary Studies	2,058	22	2,080
Letters	416	254	670	Letters	1,110	178	1,288
Library	0	0	0	Library	0	0	0
Mathematics	124	43	167	Mathematics	151	57	208
Physical Sciences	111	54	165	Physical Sciences	155	42	197
Psychology	689	78	767	Psychology	1,415	74	1,489
Public Affairs	1,165	72	1,237	Public Affairs	407	16	423
Social Sciences	878	173	1,051	Social Sciences	2,110	173	2,283
Total	13,678	3,180	16,858	Total	22,910	2,980	25,890

Table 83 (continued)

Enrollment by Degree Program Level and Discipline Division, Fall 2000 Profile

Discipline Division	Undergraduate	Graduate	Total	Discipline Division	Undergraduate	Graduate	Total
Pomona				San Diego			
Undeclared	868	3	871	Undeclared	2,224	2	2,226
Agriculture	714	67	781	Agriculture	0	0	0
Architecture	868	136	1,004	Architecture	104	28	132
Area Studies	0	0	0	Area Studies	40	57	97
Biological Sciences	790	65	855	Biological Sciences	1,268	110	1,378
Business and Management	3,662	230	3,892	Business and Management	5,617	638	6,255
Communications	214	0	214	Communications	1,456	93	1,549
Education	299	140	439	Education	1,106	913	2,019
Engineering	3,489	146	3,635	Engineering	1,441	151	1,592
Fine and Applied Arts	670	0	670	Fine and Applied Arts	1,294	113	1,407
Foreign Languages	35	0	35	Foreign Languages	255	65	320
Health Professions	0	0	0	Health Professions	916	552	1,468
Home Economics	178	0	178	Home Economics	201	13	214
Information Sciences	2,159	31	2,190	Information Sciences	1,168	307	1,475
Interdisciplinary Studies	854	0	854	Interdisciplinary Studies	2,238	59	2,297
Letters	264	62	326	Letters	998	219	1,217
Library	0	0	0	Library	0	0	0
Mathematics	159	39	198	Mathematics	178	63	241
Physical Sciences	176	32	208	Physical Sciences	261	126	387
Psychology	580	26	606	Psychology	1,617	126	1,743
Public Affairs	1	9	10	Public Affairs	1,500	407	1,907
Social Sciences	644	42	686	Social Sciences	1,956	268	2,224
Total	16,624	1,028	17,652	Total	25,838	4,310	30,148
Sacramento				San Francisco			
Undeclared	2,551	1	2,552	Undeclared	2,737	1	2,738
Agriculture	0	0	0	Agriculture	0	0	0
Architecture	167	0	167	Architecture	0	0	0
Area Studies	4	0	4	Area Studies	16	0	16
Biological Sciences	692	52	744	Biological Sciences	1,082	139	1,221
Business and Management	3,373	250	3,623	Business and Management	3,800	783	4,583
Communications	1,100	33	1,133	Communications	1,052	53	1,105
Education	1,181	1,255	2,436	Education	1,003	976	1,979
Engineering	1,567	200	1,767	Engineering	502	43	545
Fine and Applied Arts	786	41	827	Fine and Applied Arts	1,877	212	2,089
Foreign Languages	136	45	181	Foreign Languages	207	75	282
Health Professions	838	172	1,010	Health Professions	503	444	947
Home Economics	171	0	171	Home Economics	418	130	548
Information Sciences	1,397	206	1,603	Information Sciences	1,878	69	1,947
Interdisciplinary Studies	1,443	48	1,491	Interdisciplinary Studies	1,164	116	1,280
Letters	597	157	754	Letters	1,191	625	1,816
Library	0	0	0	Library	0	0	0
Mathematics	162	16	178	Mathematics	100	36	136
Physical Sciences	238	20	258	Physical Sciences	194	70	264
Psychology	955	71	1,026	Psychology	1,177	116	1,293
Public Affairs	1,784	485	2,269	Public Affairs	463	327	790
Social Sciences	1,515	203	1,718	Social Sciences	1,620	289	1,909
Total	20,657	3,255	23,912	Total	20,984	4,504	25,488
San Bernardino				San Jose			
Undeclared	915	0	915	Undeclared	1,631	0	1,631
Agriculture	0	0	0	Agriculture	47	0	47
Architecture	0	0	0	Architecture	32	56	88
Area Studies	8	0	8	Area Studies	0	0	0
Biological Sciences	430	15	445	Biological Sciences	606	78	684
Business and Management	1,738	234	1,972	Business and Management	3,799	316	4,115
Communications	343	23	366	Communications	653	61	714
Education	475	1,108	1,583	Education	1,446	864	2,310
Engineering	0	0	0	Engineering	3,346	896	4,242
Fine and Applied Arts	370	6	376	Fine and Applied Arts	1,751	139	1,890
Foreign Languages	87	0	87	Foreign Languages	110	24	134
Health Professions	677	121	798	Health Professions	1,030	257	1,287
Home Economics	49	0	49	Home Economics	73	66	139
Information Sciences	686	131	817	Information Sciences	2,943	105	3,048
Interdisciplinary Studies	1,659	56	1,715	Interdisciplinary Studies	593	83	676
Letters	544	76	620	Letters	547	174	721
Library	0	0	0	Library	0	367	367
Mathematics	139	20	159	Mathematics	112	31	143
Physical Sciences	98	0	98	Physical Sciences	185	72	257
Psychology	746	104	850	Psychology	708	94	802
Public Affairs	731	306	1,037	Public Affairs	708	398	1,106
Social Sciences	657	56	713	Social Sciences	969	159	1,128
Total	10,352	2,256	12,608	Total	21,289	4,240	25,529

Table 83 (continued)

Enrollment by Degree Program Level and Discipline Division, Fall 2000 Profile

Discipline Division	Undergraduate	Graduate	Total	Discipline Division	Undergraduate	Graduate	Total
San Luis Obispo				Stanislaus			
Undeclared	134	0	134	Undeclared	413	12	425
Agriculture	2,781	87	2,868	Agriculture	0	0	0
Architecture	1,059	44	1,103	Architecture	0	0	0
Area Studies	0	0	0	Area Studies	0	0	0
Biological Sciences	823	42	865	Biological Sciences	290	0	290
Business and Management	1,700	80	1,780	Business and Management	813	100	913
Communications	222	0	222	Communications	146	0	146
Education	1,069	206	1,275	Education	336	78	414
Engineering	4,204	80	4,284	Engineering	0	0	0
Fine and Applied Arts	310	0	310	Fine and Applied Arts	202	0	202
Foreign Languages	38	0	38	Foreign Languages	47	0	47
Health Professions	0	0	0	Health Professions	79	0	79
Home Economics	349	0	349	Home Economics	0	0	0
Information Sciences	474	50	524	Information Sciences	306	0	306
Interdisciplinary Studies	443	13	456	Interdisciplinary Studies	1,307	21	1,328
Letters	469	37	506	Letters	183	20	203
Library	0	0	0	Library	0	0	0
Mathematics	235	15	250	Mathematics	93	0	93
Physical Sciences	186	0	186	Physical Sciences	71	0	71
Psychology	298	45	343	Psychology	325	31	356
Public Affairs	229	0	229	Public Affairs	274	186	460
Social Sciences	882	0	882	Social Sciences	537	23	560
Total	15,905	699	16,604	Total	5,422	471	5,893
San Marcos				Systemwide			
Undeclared	429	3	432	Undeclared	28,882	134	29,016
Agriculture	0	0	0	Agriculture	5,574	278	5,852
Architecture	0	0	0	Architecture	2,389	272	2,661
Area Studies	0	0	0	Area Studies	234	118	352
Biological Sciences	223	10	233	Biological Sciences	12,615	913	13,528
Business and Management	1,257	124	1,381	Business and Management	53,720	5,089	58,809
Communications	225	0	225	Communications	12,088	478	12,566
Education	0	198	198	Education	14,997	13,344	28,341
Engineering	0	0	0	Engineering	20,571	2,344	22,915
Fine and Applied Arts	53	0	53	Fine and Applied Arts	16,301	1,342	17,643
Foreign Languages	69	13	82	Foreign Languages	2,033	429	2,462
Health Professions	0	0	0	Health Professions	11,093	3,698	14,791
Home Economics	0	0	0	Home Economics	2,695	607	3,302
Information Sciences	292	34	326	Information Sciences	20,116	2,045	22,161
Interdisciplinary Studies	1,047	0	1,047	Interdisciplinary Studies	27,676	765	28,441
Letters	193	24	217	Letters	11,300	2,762	14,062
Library	0	0	0	Library	0	367	367
Mathematics	76	7	83	Mathematics	2,519	527	3,046
Physical Sciences	61	0	61	Physical Sciences	2,879	580	3,459
Psychology	481	17	498	Psychology	15,209	1,248	16,457
Public Affairs	0	0	0	Public Affairs	12,506	3,579	16,085
Social Sciences	640	26	666	Social Sciences	20,334	2,305	22,639
Total	5,046	456	5,502	Total	295,731	43,224	338,955
Sonoma							
Undeclared	895	0	895				
Agriculture	0	0	0				
Architecture	0	0	0				
Area Studies	0	0	0				
Biological Sciences	267	16	283				
Business and Management	1,011	50	1,061				
Communications	214	0	214				
Education	234	214	448				
Engineering	0	0	0				
Fine and Applied Arts	381	0	381				
Foreign Languages	68	0	68				
Health Professions	204	58	262				
Home Economics	0	0	0				
Information Sciences	239	0	239				
Interdisciplinary Studies	754	36	790				
Letters	371	46	417				
Library	0	0	0				
Mathematics	92	0	92				
Physical Sciences	118	0	118				
Psychology	495	1	496				
Public Affairs	129	20	149				
Social Sciences	847	40	887				
Total	6,319	481	6,800				

Note: Degree program level differs from student level. This campus-only table does not include enrollment in International Programs or enrollment in postbaccalaureate credential or certificate programs. Undergraduate degree program figures include postbaccalaureate students seeking a second bachelor's degree.

Table 84
Systemwide Enrollment in Undergraduate* and Graduate Degree Programs
by Discipline Division, Fall 1981 to Fall 2000

Discipline Division	1981	1982	1983	1984	1985	1986	1987	1988	1989	1990
Baccalaureate Programs										
Agriculture and Natural Resources	7,633	7,170	6,879	6,539	6,025	5,501	5,324	5,295	5,423	5,543
Architecture and Environmental Design	2,310	2,055	2,281	2,330	2,331	2,481	2,756	2,945	3,166	3,185
Area Studies	278	259	246	251	262	226	219	248	253	274
Biological Sciences	10,093	9,864	10,048	10,124	10,197	9,937	9,800	10,081	10,158	10,605
Business and Management	59,457	57,203	54,899	56,059	61,382	65,547	67,656	69,533	69,454	68,769
Communications	9,511	9,912	11,196	11,197	11,494	11,829	12,220	12,743	12,887	12,981
Computer and Information Sciences	9,125	11,417	13,875	14,485	14,216	13,558	12,777	11,495	10,863	10,761
Education	11,958	11,919	12,125	11,838	12,185	12,281	13,329	13,539	13,874	14,242
Engineering	23,414	24,584	24,602	25,118	24,766	25,367	24,803	25,454	25,666	25,879
Fine and Applied Arts	14,088	13,651	12,861	12,182	12,613	12,858	13,344	14,107	14,137	14,552
Foreign Languages	1,789	1,747	1,732	1,730	1,761	1,813	1,847	1,980	1,929	2,057
Health Professions	11,447	11,348	11,612	10,955	11,041	10,796	10,454	10,185	10,224	11,099
Home Economics	4,035	3,860	3,883	4,289	4,307	4,231	4,132	4,057	3,903	3,855
Letters	7,434	7,431	6,875	7,414	8,232	9,023	9,951	10,767	11,352	11,807
Library Science	—	—	—	—	—	—	—	—	—	—
Mathematics	2,534	3,276	4,133	4,607	4,553	4,247	3,939	3,664	3,401	3,234
Physical Sciences	5,174	5,297	5,355	5,132	4,912	4,656	4,349	4,130	4,018	3,917
Psychology	9,900	9,956	10,056	10,002	10,678	11,183	12,080	13,545	14,513	15,530
Public Affairs and Services	9,237	8,448	8,227	8,354	8,749	8,724	9,363	9,937	10,099	10,686
Social Sciences	15,012	14,652	14,760	14,781	14,788	15,483	16,526	18,344	19,509	20,782
Interdisciplinary Studies	10,637	10,603	10,670	11,232	12,515	14,612	17,110	19,256	20,505	21,422
Undeclared	31,284	31,923	32,980	33,096	30,366	27,476	26,908	28,372	28,191	27,188
Total, All Programs	256,350	256,575	259,295	261,715	267,373	271,829	278,887	289,677	293,525	298,368
Master's Programs										
Agriculture and Natural Resources	380	317	294	247	227	210	205	222	247	259
Architecture and Environmental Design	240	199	176	182	230	293	292	327	301	312
Area Studies	67	60	57	79	61	63	73	90	92	85
Biological Sciences	942	905	793	741	720	694	706	702	756	776
Business and Management	6,361	6,313	5,602	5,179	5,475	5,620	5,942	5,974	6,268	6,684
Communications	325	324	342	308	343	344	408	409	383	428
Computer and Information Sciences	959	1,035	1,181	1,212	1,205	1,264	1,282	1,603	1,182	1,153
Education	9,679	8,852	7,953	7,225	7,213	7,899	8,659	8,951	9,517	9,253
Engineering	1,864	2,058	2,154	2,138	2,257	2,430	2,498	2,722	3,078	3,104
Fine and Applied Arts	1,568	1,438	1,219	1,168	1,244	1,256	1,301	1,327	1,446	1,411
Foreign Languages	277	241	219	217	240	258	252	258	303	308
Health Professions	2,400	2,297	2,218	1,949	2,015	2,095	2,173	2,325	2,534	2,634
Home Economics	506	462	477	371	363	349	337	336	308	341
Letters	1,755	1,736	1,649	1,646	1,731	1,795	1,981	2,160	2,573	2,815
Library Science	158	105	90	108	151	178	201	236	253	255
Mathematics	258	263	266	283	358	434	479	467	493	497
Physical Sciences	641	672	681	646	689	698	732	783	806	659
Psychology	1,623	1,744	1,566	1,486	1,364	1,249	1,266	1,400	1,512	1,452
Public Affairs and Services	2,643	2,493	2,416	2,303	2,528	2,671	3,035	3,138	3,266	3,524
Social Sciences	1,597	1,544	1,405	1,356	1,305	1,383	1,549	1,714	2,017	2,222
Interdisciplinary Studies	402	358	356	321	343	376	391	452	493	552
Undeclared	671	615	606	722	555	858	778	882	751	848
Total, All Programs	35,316	34,031	31,690	29,887	30,617	32,417	34,540	36,078	38,579	39,572
Joint Doctoral Programs										
Agriculture and Natural Resources	—	—	—	—	—	—	—	—	—	—
Architecture and Environmental Design	—	—	—	—	—	—	—	—	—	—
Biological Sciences	5	5	1	4	9	12	16	23	25	27
Business and Management	—	—	—	—	—	—	—	—	—	—
Computer and Information Sciences	—	—	—	—	—	—	—	—	—	—
Education	36	56	31	73	74	60	62	59	80	67
Engineering	—	—	—	—	—	—	—	—	—	1
Health Professions	—	—	—	—	—	—	—	—	—	3
Letters	—	—	—	—	—	—	—	—	—	—
Mathematics	—	—	—	—	—	—	—	—	—	—
Physical Sciences	10	9	2	12	9	11	14	14	14	13
Psychology	—	—	—	—	—	—	—	28	38	49
Public Affairs	—	—	—	—	—	—	—	—	—	—
Social Sciences	—	—	—	—	—	—	—	—	—	—
Total, All Programs	53	76	35	94	100	96	112	124	158	160

*Includes postbaccalaureate students enrolled in and pursuing a second bachelor's degree.
 Enrollment does not include the CSU Statewide Nursing Program.
 Note: Degree program enrollment differs from enrollment by student level.

Table 84 (continued)

**Systemwide Enrollment in Undergraduate* and Graduate Degree Programs
by Discipline Division, Fall 1981 to Fall 2000**

Discipline Division	1991	1992	1993	1994	1995	1996	1997	1998	1999	2000
Baccalaureate Programs										
Agriculture and Natural Resources	5,423	5,364	5,179	5,292	5,418	5,587	5,720	5,665	5,511	5,574
Architecture and Environmental Design	3,175	2,937	2,683	2,468	2,350	2,244	2,231	2,182	2,318	2,389
Area Studies	288	295	280	287	263	284	258	254	239	234
Biological Sciences	11,056	11,437	12,057	13,079	14,328	15,062	14,934	14,204	13,532	12,615
Business and Management	65,214	59,815	55,313	51,655	52,231	52,927	52,128	51,651	52,528	53,720
Communications	12,634	11,690	10,579	9,843	9,705	10,081	10,198	10,372	11,377	12,088
Computer and Information Sciences	10,067	9,653	9,226	9,161	9,910	11,298	13,614	16,791	19,316	20,116
Education	14,101	13,428	13,000	12,979	12,960	13,675	14,001	14,621	14,935	14,997
Engineering	25,491	24,392	22,715	20,801	20,110	19,733	19,509	19,562	19,982	20,571
Fine and Applied Arts	14,021	13,525	12,665	12,347	12,995	13,582	14,152	14,628	15,375	16,301
Foreign Languages	2,007	2,070	2,018	2,018	2,104	2,157	2,297	2,236	2,133	2,033
Health Professions	11,958	14,391	12,981	13,320	14,089	13,882	12,945	12,382	11,594	11,093
Home Economics	3,556	3,180	2,860	2,724	2,640	2,716	2,779	2,802	2,721	2,695
Letters	12,121	11,806	11,037	10,785	10,833	11,119	11,160	11,007	11,081	11,300
Library Science	—	—	—	—	—	—	—	—	—	—
Mathematics	3,049	2,820	2,541	2,505	2,465	2,455	2,464	2,398	2,468	2,519
Physical Sciences	3,725	3,543	3,527	3,700	3,594	3,673	3,543	3,104	2,980	2,879
Psychology	15,827	15,924	15,637	15,570	15,888	16,238	15,906	15,121	14,969	15,209
Public Affairs and Services	11,208	11,639	11,770	11,748	12,473	13,254	13,284	12,860	12,735	12,506
Social Sciences	20,889	21,133	20,006	19,524	19,942	20,533	20,317	19,786	20,123	20,334
Interdisciplinary Studies	21,470	20,181	19,524	19,054	19,933	21,549	23,335	25,219	26,758	27,676
Undeclared	24,507	23,714	19,564	22,605	22,406	23,627	24,987	25,925	26,322	28,882
Total, All Programs	291,787	282,937	265,162	261,465	266,637	275,676	279,762	282,770	288,997	295,731
Master's Programs										
Agriculture and Natural Resources	275	266	226	213	233	225	233	251	262	277
Architecture and Environmental Design	297	339	281	295	330	339	306	301	297	268
Area Studies	95	122	118	135	127	138	142	139	127	118
Biological Sciences	764	820	852	927	912	949	924	920	858	873
Business and Management	6,748	6,481	5,561	5,205	5,006	5,225	5,630	5,397	5,379	5,086
Communications	472	468	421	405	387	465	474	484	451	478
Computer and Information Sciences	1,453	1,447	1,356	1,267	1,260	1,205	1,371	1,649	1,888	2,044
Education	9,490	9,571	8,659	8,711	9,308	9,648	10,477	11,086	12,066	13,212
Engineering	3,279	3,314	3,000	2,801	2,631	2,538	2,446	2,318	2,389	2,322
Fine and Applied Arts	1,510	1,437	1,361	1,326	1,329	1,380	1,345	1,352	1,325	1,342
Foreign Languages	356	348	320	345	341	371	375	393	370	429
Health Professions	2,902	3,292	2,994	3,125	3,187	3,183	3,207	3,709	3,670	3,658
Home Economics	683	676	697	692	742	687	674	630	625	607
Letters	3,217	3,227	3,084	3,145	3,184	3,114	3,013	2,944	2,836	2,757
Library Science	321	324	318	314	272	253	279	329	333	367
Mathematics	504	527	456	500	512	492	487	486	499	526
Physical Sciences	691	675	694	721	682	674	634	587	574	560
Psychology	1,544	1,474	1,455	1,504	1,380	1,389	1,334	1,255	1,157	1,186
Public Affairs and Services	3,675	3,705	3,590	3,484	3,372	3,530	3,267	3,442	3,505	3,576
Social Sciences	2,414	2,459	2,416	2,427	2,415	2,374	2,615	2,338	2,296	2,279
Interdisciplinary Studies	667	732	740	790	824	828	825	859	788	765
Undeclared	373	344	22	5	68	6	45	70	85	134
Total, All Programs	41,730	42,048	38,621	38,337	38,502	39,013	40,103	40,939	41,780	42,864
Joint Doctoral Programs										
Agriculture and Natural Resources	—	—	—	—	—	—	2	—	—	1
Architecture and Environmental Design	—	—	—	—	—	—	—	—	—	4
Biological Sciences	34	34	36	34	15	8	13	11	10	40
Business and Management	—	—	—	—	—	—	1	—	—	3
Computer and Information Sciences	—	—	1	—	—	—	—	—	—	1
Education	72	66	71	151	131	108	114	127	129	132
Engineering	3	8	8	24	22	25	17	21	26	22
Health Professions	6	8	14	30	10	12	20	24	21	40
Letters	—	—	—	—	—	—	1	—	—	5
Mathematics	—	—	—	—	—	—	—	—	—	1
Physical Sciences	11	10	11	10	1	4	1	3	5	20
Psychology	48	58	64	62	52	48	51	52	53	62
Public Affairs	—	—	—	—	—	1	—	—	—	3
Social Sciences	4	7	10	9	11	10	11	13	12	26
Total, All Programs	178	191	215	320	242	216	231	251	256	360

*Includes postbaccalaureate students enrolled in and pursuing a second bachelor's degree. As of fall 1998, enrollment includes the CSU Statewide Nursing Program. This table does not include postbaccalaureate credential or certificate program enrollment. Note: Degree program enrollment differs from enrollment by student level.

Table 85

CSU Fall 2000 Systemwide Enrollment in Undergraduate Programs by Discipline Division and Ethnicity

Discipline Division	African American	American Indian	Asian American	Filipino	Mexican American	Other Latino	Pacific Islander	White Non-Latino	Total Identified	Unknown	Non-resident Alien	Total All Groups
	Number											
Undeclared	1,755	233	4,031	1,535	4,796	1,680	179	10,062	24,271	4,240	371	28,882
Agriculture and Natural Resources	42	88	184	43	460	179	12	3,653	4,661	860	53	5,574
Architecture and Environmental Design	53	24	328	101	328	131	12	1,010	1,987	320	82	2,389
Area Studies	4	1	11	9	49	20	0	85	179	32	23	234
Biological Sciences	780	124	1,795	877	1,597	774	87	4,554	10,588	1,715	312	12,615
Business and Management	2,793	348	10,635	2,761	7,017	2,618	288	18,198	44,658	5,883	3,179	53,720
Communications	977	113	718	536	1,497	647	47	5,403	9,938	1,689	461	12,088
Computer and Information Sciences	846	100	7,191	1,400	1,345	713	92	4,510	16,197	2,108	1,811	20,116
Education	854	155	1,417	743	2,819	906	82	6,022	12,998	1,661	338	14,997
Engineering	741	150	4,565	1,434	2,707	1,020	99	6,437	17,153	2,282	1,136	20,571
Fine and Applied Arts	663	181	1,938	732	1,722	773	53	6,837	12,899	2,645	757	16,301
Foreign Languages	49	14	118	17	762	257	3	524	1,744	210	79	2,033
Health Professions	932	109	1,385	1,427	1,512	594	57	3,745	9,761	1,205	127	11,093
Home Economics	139	17	371	143	276	118	9	1,129	2,202	373	120	2,695
Letters	689	102	497	264	1,437	533	56	5,572	9,150	1,963	187	11,300
Library Science	0	0	0	0	0	0	0	0	0	0	0	0
Mathematics	112	20	326	68	450	117	16	1,005	2,114	336	69	2,519
Physical Sciences	123	24	326	117	289	111	19	1,316	2,325	465	89	2,879
Psychology	1,385	143	947	585	2,742	1,129	65	5,808	12,804	2,062	343	15,209
Public Affairs and Services	1,316	125	887	384	3,325	841	82	4,157	11,117	1,270	119	12,506
Social Sciences	1,743	234	1,116	540	3,698	1,128	89	8,244	16,792	3,096	446	20,334
Interdisciplinary Studies	1,365	256	1,732	569	5,933	1,527	123	12,614	24,119	3,321	236	27,676
Totals, All Programs	17,361	2,561	40,518	14,285	44,761	15,816	1,470	110,885	247,657	37,736	10,338	295,731

Percent by Ethnic Group

Undeclared	7.2	1.0	16.6	6.3	19.8	6.9	0.7	41.5	84.0	14.7	1.3	100.0
Agriculture and Natural Resources	0.9	1.9	3.9	0.9	9.9	3.8	0.3	78.4	83.6	15.4	1.0	100.0
Architecture and Environmental Design	2.7	1.2	16.5	5.1	16.5	6.6	0.6	50.8	83.2	13.4	3.4	100.0
Area Studies	2.2	0.6	6.1	5.0	27.4	11.2	0.0	47.5	76.5	13.7	9.8	100.0
Biological Sciences	7.4	1.2	17.0	8.3	15.1	7.3	0.8	43.0	83.9	13.6	2.5	100.0
Business and Management	6.3	0.8	23.8	6.2	15.7	5.9	0.6	40.7	83.1	11.0	5.9	100.0
Communications	9.8	1.1	7.2	5.4	15.1	6.5	0.5	54.4	82.2	14.0	3.8	100.0
Computer and Information Sciences	5.2	0.6	44.4	8.6	8.3	4.4	0.6	27.8	80.5	10.5	9.0	100.0
Education	6.6	1.2	10.9	5.7	21.7	7.0	0.6	46.3	86.7	11.1	2.3	100.0
Engineering	4.3	0.9	26.6	8.4	15.8	5.9	0.6	37.5	83.4	11.1	5.5	100.0
Fine and Applied Arts	5.1	1.4	15.0	5.7	13.3	6.0	0.4	53.0	79.1	16.2	4.6	100.0
Foreign Languages	2.8	0.8	6.8	1.0	43.7	14.7	0.2	30.0	85.8	10.3	3.9	100.0
Health Professions	9.5	1.1	14.2	14.6	15.5	6.1	0.6	38.4	88.0	10.9	1.1	100.0
Home Economics	6.3	0.8	16.8	6.5	12.5	5.4	0.4	51.3	81.7	13.8	4.5	100.0
Letters	7.5	1.1	5.4	2.9	15.7	5.8	0.6	60.9	81.0	17.4	1.7	100.0
Library Science	0.0	0.0	0.0	0.0	0.0	0.0	0.0	0.0	0.0	0.0	0.0	0.0
Mathematics	5.3	0.9	15.4	3.2	21.3	5.5	0.8	47.5	83.9	13.3	2.7	100.0
Physical Sciences	5.3	1.0	14.0	5.0	12.4	4.8	0.8	56.6	80.8	16.2	3.1	100.0
Psychology	10.8	1.1	7.4	4.6	21.4	8.8	0.5	45.4	84.2	13.6	2.3	100.0
Public Affairs and Services	11.8	1.1	8.0	3.5	29.9	7.6	0.7	37.4	88.9	10.2	1.0	100.0
Social Sciences	10.4	1.4	6.6	3.2	22.0	6.7	0.5	49.1	82.6	15.2	2.2	100.0
Interdisciplinary Studies	5.7	1.1	7.2	2.4	24.6	6.3	0.5	52.3	87.1	12.0	0.9	100.0
Totals, All Programs	7.0	1.0	16.4	5.8	18.1	6.4	0.6	44.8	83.7	12.8	3.5	100.0

*Includes postbaccalaureate students pursuing a second bachelor's degree.
 As of fall 1998, enrollment includes the CSU Statewide Nursing Program.
 Note: Degree program enrollment differs from enrollment by student level.

Table 85 (continued)

CSU Fall 2000 Systemwide Enrollment in Undergraduate Programs by Discipline Division and Ethnicity

Discipline Division	African American	American Indian	Asian American	Filipino	Mexican American	Other Latino	Pacific Islander	White Non-Latino	Total Identified	Unknown	Non-resident Alien	Total All Groups
Percent by Discipline Division												
Undeclared	10.1	9.1	9.9	10.7	10.7	10.6	12.2	9.1	9.8	11.2	3.6	9.8
Agriculture and Natural Resources	0.2	3.4	0.5	0.3	1.0	1.1	0.8	3.3	1.9	2.3	0.5	1.9
Architecture and Environmental Design	0.3	0.9	0.8	0.7	0.7	0.8	0.8	0.9	0.8	0.8	0.8	0.8
Area Studies	0.0	0.0	0.0	0.1	0.1	0.1	0.0	0.1	0.1	0.1	0.2	0.1
Biological Sciences	4.5	4.8	4.4	6.1	3.6	4.9	5.9	4.1	4.3	4.5	3.0	4.3
Business and Management	16.1	13.6	26.2	19.3	15.7	16.6	19.6	16.4	18.0	15.6	30.8	18.2
Communications	5.6	4.4	1.8	3.8	3.3	4.1	3.2	4.9	4.0	4.5	4.5	4.1
Computer and Information Sciences	4.9	3.9	17.7	9.8	3.0	4.5	6.3	4.1	6.5	5.6	17.5	6.8
Education	4.9	6.1	3.5	5.2	6.3	5.7	5.6	5.4	5.2	4.4	3.3	5.1
Engineering	4.3	5.9	11.3	10.0	6.0	6.4	6.7	5.8	6.9	6.0	11.0	7.0
Fine and Applied Arts	3.8	7.1	4.8	5.1	3.8	4.9	3.6	6.2	5.2	7.0	7.3	5.5
Foreign Languages	0.3	0.5	0.3	0.1	1.7	1.6	0.2	0.5	0.7	0.6	0.8	0.7
Health Professions	5.4	4.3	3.4	10.0	3.4	3.8	3.9	3.4	3.9	3.2	1.2	3.8
Home Economics	0.8	0.7	0.9	1.0	0.6	0.7	0.6	1.0	0.9	1.0	1.2	0.9
Letters	4.0	4.0	1.2	1.8	3.2	3.4	3.8	5.0	3.7	5.2	1.8	3.8
Library Science	0.0	0.0	0.0	0.0	0.0	0.0	0.0	0.0	0.0	0.0	0.0	0.0
Mathematics	0.6	0.8	0.8	0.5	1.0	0.7	1.1	0.9	0.9	0.9	0.7	0.9
Physical Sciences	0.7	0.9	0.8	0.8	0.6	0.7	1.3	1.2	0.9	1.2	0.9	1.0
Psychology	8.0	5.6	2.3	4.1	6.1	7.1	4.4	5.2	5.2	5.5	3.3	5.1
Public Affairs and Services	7.6	4.9	2.2	2.7	7.4	5.3	5.6	3.7	4.5	3.4	1.2	4.2
Social Sciences	10.0	9.1	2.8	3.8	8.3	7.1	6.1	7.4	6.8	8.2	4.3	6.9
Interdisciplinary Studies	7.9	10.0	4.3	4.0	13.3	9.7	8.4	11.4	9.7	8.8	2.3	9.4
Totals, All Programs	100.0	100.0	100.0	100.0	100.0	100.0	100.0	100.0	100.0	100.0	100.0	100.0
Percent Female												
Undeclared	61.0	66.1	55.1	53.7	61.1	62.1	62.6	56.4	57.8	56.3	50.4	57.5
Agriculture and Natural Resources	57.1	58.0	45.1	58.1	46.7	54.7	75.0	52.5	52.0	47.3	35.8	51.1
Architecture and Environmental Design	50.9	41.7	43.9	47.5	36.3	45.0	33.3	50.1	46.1	48.4	61.0	47.0
Area Studies	50.0	0.0	45.5	55.6	57.1	45.0	0.0	70.6	60.9	50.0	73.9	60.7
Biological Sciences	72.3	62.9	61.2	64.8	62.7	66.4	67.8	62.8	63.7	62.3	64.7	63.5
Business and Management	56.2	57.2	61.1	58.3	57.7	54.6	58.0	47.5	54.1	49.1	53.0	53.5
Communications	60.2	56.6	61.4	59.3	58.7	61.1	55.3	57.0	58.3	57.9	60.1	58.3
Computer and Information Sciences	37.7	26.0	35.7	33.3	28.5	23.0	33.7	20.6	30.2	24.3	38.3	30.3
Education	61.5	67.1	60.1	52.8	68.5	65.7	65.9	64.4	64.1	62.6	57.7	63.8
Engineering	20.8	20.7	16.4	19.9	15.8	16.6	17.2	14.2	16.0	15.9	15.9	16.0
Fine and Applied Arts	52.8	56.9	54.6	43.9	48.4	56.5	50.9	56.9	54.4	54.8	67.0	55.0
Foreign Languages	67.3	71.4	53.4	41.2	67.1	71.2	100.0	63.7	65.6	63.8	73.4	65.7
Health Professions	86.2	84.4	84.6	78.8	83.8	83.0	89.5	87.6	84.9	83.1	84.3	84.7
Home Economics	89.2	82.4	88.4	88.8	87.3	87.3	66.7	93.4	90.7	90.9	93.3	90.8
Letters	70.4	66.7	63.8	59.1	65.9	65.7	60.7	65.1	65.4	61.8	70.1	64.9
Library Science	0.0	0.0	0.0	0.0	0.0	0.0	0.0	0.0	0.0	0.0	0.0	0.0
Mathematics	53.6	70.0	46.9	36.8	48.0	47.9	43.8	48.7	48.2	44.6	52.2	47.9
Physical Sciences	53.7	41.7	49.7	53.8	38.8	49.5	26.3	39.2	42.5	38.9	48.3	42.1
Psychology	79.5	81.8	73.3	73.7	76.8	76.4	81.5	78.3	77.4	76.8	81.0	77.4
Public Affairs and Services	70.1	64.8	53.2	53.1	62.8	63.5	45.1	56.1	60.0	59.7	67.2	60.0
Social Sciences	61.0	52.6	50.7	55.0	54.0	55.7	40.4	51.1	53.2	51.0	56.1	52.9
Interdisciplinary Studies	80.1	77.3	80.4	79.3	79.9	82.3	74.0	82.7	81.5	79.9	66.9	81.2
Totals, All Programs	63.0	60.4	51.9	54.3	60.4	59.7	56.4	57.0	57.2	55.3	50.9	56.8

*Includes postbaccalaureate students pursuing a second bachelor's degree.
 As of fall 1998, enrollment includes the CSU Statewide Nursing Program.
 Note: Degree program enrollment differs from enrollment by student level.

Table 86

CSU Fall 2000 Systemwide Enrollment in Master's Programs by Discipline Division and Ethnicity

Discipline Division	African American	American Indian	Asian American	Filipino	Mexican American	Other Latino	Pacific Islander	White Non-Latino	Total Identified	Unknown	Non-resident Alien	Total All Groups
Number												
Undeclared	18	2	14	1	26	10	2	34	107	15	12	134
Agriculture and Natural Resources	3	4	18	3	10	8	0	169	215	41	21	277
Architecture and Environmental Design	11	2	25	7	12	8	1	127	193	51	24	268
Area Studies	2	0	5	1	32	15	0	34	89	19	10	118
Biological Sciences	33	8	98	15	59	35	3	422	673	150	50	873
Business and Management	128	23	789	85	149	106	10	1,913	3,203	477	1,406	5,086
Communications	33	2	22	12	15	13	0	207	304	62	112	478
Computer and Information Sciences	21	4	471	18	28	19	3	339	903	143	998	2,044
Education	1,036	108	778	214	2,027	663	32	6,553	11,411	1,517	284	13,212
Engineering	63	6	545	63	93	56	7	520	1,353	217	752	2,322
Fine and Applied Arts	42	8	117	19	64	34	2	686	972	235	135	1,342
Foreign Languages	4	0	14	1	134	80	0	102	335	50	44	429
Health Professions	226	38	379	188	286	142	11	1,860	3,130	435	93	3,658
Home Economics	43	5	55	14	47	32	0	299	495	70	42	607
Letters	118	12	156	37	207	83	11	1,434	2,058	471	228	2,757
Library Science	9	4	24	3	12	6	1	229	288	72	7	367
Mathematics	19	4	95	6	41	23	1	223	412	78	36	526
Physical Sciences	16	3	87	18	31	14	4	230	403	84	73	560
Psychology	99	9	89	31	99	59	3	622	1,011	129	46	1,186
Public Affairs and Services	484	49	217	84	568	194	14	1,493	3,103	387	86	3,576
Social Sciences	124	27	115	25	242	102	10	1,100	1,745	381	153	2,279
Interdisciplinary Studies	35	11	32	4	27	30	1	441	581	139	45	765
Totals, All Programs	2,567	329	4,145	849	4,209	1,732	116	19,037	32,984	5,223	4,657	42,864
Percent by Ethnic Group												
Undeclared	16.8	1.9	13.1	0.9	24.3	9.3	1.9	31.8	79.9	11.2	9.0	100.0
Agriculture and Natural Resources	1.4	1.9	8.4	1.4	4.7	3.7	0.0	78.6	77.6	14.8	7.6	100.0
Architecture and Environmental Design	5.7	1.0	13.0	3.6	6.2	4.1	0.5	65.8	72.0	19.0	9.0	100.0
Area Studies	2.2	0.0	5.6	1.1	36.0	16.9	0.0	38.2	75.4	16.1	8.5	100.0
Biological Sciences	4.9	1.2	14.6	2.2	8.8	5.2	0.4	62.7	77.1	17.2	5.7	100.0
Business and Management	4.0	0.7	24.6	2.7	4.7	3.3	0.3	59.7	63.0	9.4	27.6	100.0
Communications	10.9	0.7	7.2	3.9	4.9	4.3	0.0	68.1	63.6	13.0	23.4	100.0
Computer and Information Sciences	2.3	0.4	52.2	2.0	3.1	2.1	0.3	37.5	44.2	7.0	48.8	100.0
Education	9.1	0.9	6.8	1.9	17.8	5.8	0.3	57.4	86.4	11.5	2.1	100.0
Engineering	4.7	0.4	40.3	4.7	6.9	4.1	0.5	38.4	58.3	9.3	32.4	100.0
Fine and Applied Arts	4.3	0.8	12.0	2.0	6.6	3.5	0.2	70.6	72.4	17.5	10.1	100.0
Foreign Languages	1.2	0.0	4.2	0.3	40.0	23.9	0.0	30.4	78.1	11.7	10.3	100.0
Health Professions	7.2	1.2	12.1	6.0	9.1	4.5	0.4	59.4	85.6	11.9	2.5	100.0
Home Economics	8.7	1.0	11.1	2.8	9.5	6.5	0.0	60.4	81.5	11.5	6.9	100.0
Letters	5.7	0.6	7.6	1.8	10.1	4.0	0.5	69.7	74.6	17.1	8.3	100.0
Library Science	3.1	1.4	8.3	1.0	4.2	2.1	0.3	79.5	78.5	19.6	1.9	100.0
Mathematics	4.6	1.0	23.1	1.5	10.0	5.6	0.2	54.1	78.3	14.8	6.8	100.0
Physical Sciences	4.0	0.7	21.6	4.5	7.7	3.5	1.0	57.1	72.0	15.0	13.0	100.0
Psychology	9.8	0.9	8.8	3.1	9.8	5.8	0.3	61.5	85.2	10.9	3.9	100.0
Public Affairs and Services	15.6	1.6	7.0	2.7	18.3	6.3	0.5	48.1	86.8	10.8	2.4	100.0
Social Sciences	7.1	1.5	6.6	1.4	13.9	5.8	0.6	63.0	76.6	16.7	6.7	100.0
Interdisciplinary Studies	6.0	1.9	5.5	0.7	4.6	5.2	0.2	75.9	75.9	18.2	5.9	100.0
Totals, All Programs	7.8	1.0	12.6	2.6	12.8	5.3	0.4	57.7	77.0	12.2	10.9	100.0

Note: Degree program enrollment differs from enrollment by student level. To maintain continuity with other tables in this section, the above figures exclude enrollment in International Programs.

Table 86 (continued)

CSU Fall 2000 Systemwide Enrollment in Master's Programs by Discipline Division and Ethnicity

Discipline Division	African American	American Indian	Asian American	Filipino	Mexican American	Other Latino	Pacific Islander	White Non-Latino	Total Identified	Unknown	Non-resident Alien	Total All Groups
Percent by Discipline Division												
Undeclared	0.7	0.6	0.3	0.1	0.6	0.6	1.7	0.2	0.3	0.3	0.3	0.3
Agriculture and Natural Resources	0.1	1.2	0.4	0.4	0.2	0.5	0.0	0.9	0.7	0.8	0.5	0.6
Architecture and Environmental Design	0.4	0.6	0.6	0.8	0.3	0.5	0.9	0.7	0.6	1.0	0.5	0.6
Area Studies	0.1	0.0	0.1	0.1	0.8	0.9	0.0	0.2	0.3	0.4	0.2	0.3
Biological Sciences	1.3	2.4	2.4	1.8	1.4	2.0	2.6	2.2	2.0	2.9	1.1	2.0
Business and Management	5.0	7.0	19.0	10.0	3.5	6.1	8.6	10.0	9.7	9.1	30.2	11.9
Communications	1.3	0.6	0.5	1.4	0.4	0.8	0.0	1.1	0.9	1.2	2.4	1.1
Computer and Information Sciences	0.8	1.2	11.4	2.1	0.7	1.1	2.6	1.8	2.7	2.7	21.4	4.8
Education	40.4	32.8	18.8	25.2	48.2	38.3	27.6	34.4	34.6	29.0	6.1	30.8
Engineering	2.5	1.8	13.1	7.4	2.2	3.2	6.0	2.7	4.1	4.2	16.1	5.4
Fine and Applied Arts	1.6	2.4	2.8	2.2	1.5	2.0	1.7	3.6	2.9	4.5	2.9	3.1
Foreign Languages	0.2	0.0	0.3	0.1	3.2	4.6	0.0	0.5	1.0	1.0	0.9	1.0
Health Professions	8.8	11.6	9.1	22.1	6.8	8.2	9.5	9.8	9.5	8.3	2.0	8.5
Home Economics	1.7	1.5	1.3	1.6	1.1	1.8	0.0	1.6	1.5	1.3	0.9	1.4
Letters	4.6	3.6	3.8	4.4	4.9	4.8	9.5	7.5	6.2	9.0	4.9	6.4
Library Science	0.4	1.2	0.6	0.4	0.3	0.3	0.9	1.2	0.9	1.4	0.2	0.9
Mathematics	0.7	1.2	2.3	0.7	1.0	1.3	0.9	1.2	1.2	1.5	0.8	1.2
Physical Sciences	0.6	0.9	2.1	2.1	0.7	0.8	3.4	1.2	1.2	1.6	1.6	1.3
Psychology	3.9	2.7	2.1	3.7	2.4	3.4	2.6	3.3	3.1	2.5	1.0	2.8
Public Affairs and Services	18.9	14.9	5.2	9.9	13.5	11.2	12.1	7.8	9.4	7.4	1.8	8.3
Social Sciences	4.8	8.2	2.8	2.9	5.7	5.9	8.6	5.8	5.3	7.3	3.3	5.3
Interdisciplinary Studies	1.4	3.3	0.8	0.5	0.6	1.7	0.9	2.3	1.8	2.7	1.0	1.8
Totals, All Programs	100.0	100.0	100.0	100.0	100.0	100.0	100.0	100.0	100.0	100.0	100.0	100.0

Percent Female

Undeclared	61.1	0.0	78.6	0.0	88.5	70.0	50.0	64.7	70.1	60.0	75.0	69.4
Agriculture and Natural Resources	66.7	100.0	61.1	33.3	50.0	75.0	0.0	59.8	60.5	51.2	23.8	56.3
Architecture and Environmental Design	27.3	0.0	60.0	28.6	58.3	50.0	0.0	52.0	50.3	45.1	66.7	50.7
Area Studies	50.0	0.0	100.0	100.0	56.3	73.3	0.0	52.9	60.7	47.4	80.0	60.2
Biological Sciences	57.6	62.5	51.0	80.0	57.6	65.7	33.3	60.2	59.1	53.3	88.0	59.8
Business and Management	46.1	34.8	49.3	47.1	42.3	38.7	20.0	40.0	42.7	32.5	51.9	44.3
Communications	69.7	100.0	63.6	75.0	86.7	61.5	0.0	59.4	63.2	56.5	70.5	64.0
Computer and Information Sciences	38.1	50.0	34.8	33.3	25.0	21.1	33.3	24.2	30.3	24.5	43.1	36.2
Education	73.4	72.2	77.4	73.4	70.7	71.3	59.4	76.8	75.0	70.9	77.8	74.5
Engineering	9.5	0.0	20.6	30.2	8.6	21.4	14.3	14.0	17.1	13.8	32.3	21.7
Fine and Applied Arts	59.5	75.0	75.2	52.6	57.8	52.9	50.0	59.8	61.2	53.6	73.3	61.1
Foreign Languages	50.0	0.0	57.1	0.0	70.1	70.0	0.0	69.6	69.0	66.0	81.8	69.9
Health Professions	81.9	68.4	79.2	78.7	77.6	79.6	81.8	83.0	81.3	79.8	71.0	80.9
Home Economics	76.7	100.0	90.9	92.9	78.7	78.1	0.0	86.0	84.8	87.1	81.0	84.8
Letters	71.2	41.7	67.3	64.9	58.0	62.7	63.6	66.3	65.5	59.7	76.3	65.4
Library Science	77.8	75.0	79.2	100.0	75.0	50.0	100.0	82.5	81.3	59.7	85.7	77.1
Mathematics	52.6	25.0	46.3	66.7	31.7	43.5	0.0	47.1	45.4	29.5	41.7	42.8
Physical Sciences	25.0	33.3	37.9	38.9	22.6	35.7	75.0	34.3	34.5	35.7	52.1	37.0
Psychology	83.8	66.7	68.5	77.4	75.8	78.0	100.0	78.5	77.7	65.9	87.0	76.8
Public Affairs and Services	77.5	61.2	67.7	73.8	68.3	64.4	42.9	71.4	70.9	71.3	69.8	70.9
Social Sciences	59.7	74.1	51.3	64.0	48.3	51.0	40.0	50.7	51.6	47.8	62.1	51.6
Interdisciplinary Studies	51.4	45.5	65.6	100.0	66.7	76.7	100.0	61.5	62.1	53.2	53.3	60.0
Totals, All Programs	69.8	62.9	55.7	66.2	65.3	64.5	51.7	65.8	64.6	58.1	53.1	62.6

Note: Degree program enrollment differs from enrollment by student level. To maintain continuity with other tables in this section, the above figures exclude enrollment in International Programs.

Table 87

CSU Fall Enrollment in Undergraduate Programs,
Percent by Discipline Division and Ethnicity, from Fall 1987

Discipline Division	(African American)													
	1987	1988	1989	1990	1991	1992	1993	1994	1995	1996	1997	1998	1999	2000
Undeclared	11.9	11.9	12.5	11.8	10.9	11.0	10.1	10.5	9.6	10.0	9.6	9.6	9.5	10.1
Agriculture	0.4	0.3	0.3	0.3	0.3	0.4	0.4	0.3	0.4	0.3	0.3	0.3	0.2	0.2
Architecture	0.5	0.5	0.5	0.6	0.5	0.5	0.5	0.3	0.2	0.3	0.3	0.2	0.3	0.3
Area Studies	0.0	0.0	0.0	0.0	0.0	0.0	0.0	0.0	0.0	0.0	0.0	0.0	0.0	0.0
Biological Sciences	3.1	2.8	2.8	2.9	2.8	3.2	3.6	4.2	4.6	4.8	5.0	4.8	4.7	4.5
Business and Management	25.1	24.7	23.7	22.0	21.0	19.9	19.5	18.1	17.5	16.7	16.0	15.7	15.9	16.1
Communications	5.6	5.5	5.7	5.8	5.7	5.5	5.7	5.4	5.4	5.3	5.6	5.7	5.5	5.6
Computer and Information Sciences	4.8	4.1	3.5	3.8	3.4	3.3	3.0	3.1	3.1	3.3	3.7	4.0	4.6	4.9
Education	4.3	4.3	4.2	4.4	4.1	3.8	3.9	4.1	4.1	4.0	4.3	4.6	4.6	4.9
Engineering	5.1	5.3	5.2	5.5	5.9	5.6	5.6	5.1	5.1	4.8	4.5	4.6	4.4	4.3
Fine and Applied Arts	3.1	3.3	3.4	3.0	3.0	2.9	3.0	3.0	3.1	3.3	3.5	3.8	3.8	3.8
Foreign Languages	0.3	0.3	0.4	0.4	0.3	0.3	0.3	0.3	0.3	0.3	0.3	0.3	0.3	0.3
Health Professions	4.7	4.5	4.3	4.4	4.9	5.1	5.6	5.6	5.9	5.5	5.6	5.7	5.5	5.4
Home Economics	1.0	0.8	0.7	0.8	0.7	0.7	0.6	0.7	0.6	0.6	0.6	0.6	0.7	0.8
Letters	2.8	2.8	2.8	2.8	3.3	3.2	3.3	3.6	3.8	3.8	3.8	3.9	4.1	4.0
Library Science	0.0	0.0	0.0	0.0	0.0	0.0	0.0	0.0	0.0	0.0	0.0	0.0	0.0	0.0
Mathematics	1.1	0.9	0.8	0.7	0.7	0.7	0.7	0.8	0.7	0.7	0.7	0.6	0.7	0.6
Physical Sciences	0.7	0.8	0.8	0.8	0.8	0.7	0.9	0.9	0.8	0.8	0.8	0.7	0.7	0.7
Psychology	5.8	6.1	6.6	6.8	7.2	7.7	7.5	7.8	8.1	8.3	8.0	8.1	8.0	8.0
Public Affairs	7.8	8.2	8.1	8.5	8.8	9.4	9.2	9.0	9.3	9.3	9.0	8.5	8.2	7.6
Social Sciences	7.2	7.8	8.5	8.9	9.3	10.1	10.4	10.7	11.0	10.9	11.0	10.4	10.3	10.0
Interdisciplinary Studies	4.7	5.0	5.4	5.7	6.2	6.1	6.4	6.3	6.4	7.0	7.4	7.8	7.8	7.9
Total, All Programs	100.0	100.0	100.0	100.0	100.0	100.0	100.0	100.0	100.0	100.0	100.0	100.0	100.0	100.0
Discipline Division	(American Indian)													
	1987	1988	1989	1990	1991	1992	1993	1994	1995	1996	1997	1998	1999	2000
Undeclared	9.3	8.9	10.1	9.5	8.3	8.5	7.8	9.2	8.5	7.9	7.3	6.9	7.1	9.1
Agriculture	2.5	2.9	3.1	3.1	3.3	3.5	3.6	3.9	3.5	3.4	3.7	4.2	3.5	3.4
Architecture	1.0	1.0	0.8	0.9	1.0	0.9	0.8	0.7	0.8	0.9	0.7	0.9	0.9	0.9
Area Studies	0.0	0.0	0.0	0.0	0.0	0.1	0.0	0.2	0.1	0.0	0.0	0.1	0.1	0.0
Biological Sciences	3.3	4.1	4.1	3.9	3.7	3.9	3.8	5.0	5.4	5.2	5.6	5.4	5.4	4.8
Business and Management	22.0	21.2	20.3	18.1	18.2	16.3	14.7	12.4	13.7	13.0	12.5	12.5	13.2	13.6
Communications	3.5	4.0	3.7	4.6	4.9	5.0	4.7	4.2	4.2	3.6	3.8	4.0	4.6	4.4
Computer and Information Sciences	3.1	2.8	2.1	2.4	2.1	1.9	2.1	2.0	2.2	2.1	2.8	3.6	3.7	3.9
Education	7.1	6.4	5.9	5.4	5.7	5.1	5.5	6.0	6.0	5.8	5.7	5.6	5.8	6.1
Engineering	5.7	5.6	5.5	5.8	5.5	5.9	5.6	5.0	4.9	5.0	5.8	5.0	5.5	5.9
Fine and Applied Arts	5.2	5.4	5.7	4.7	4.8	4.4	4.8	5.1	5.1	5.6	5.6	6.8	7.0	7.1
Foreign Languages	0.4	0.3	0.4	0.5	0.4	0.3	0.3	0.3	0.4	0.5	0.7	0.6	0.6	0.5
Health Professions	3.7	3.6	3.7	4.3	4.0	4.7	5.3	5.3	5.3	4.9	4.4	4.0	4.6	4.3
Home Economics	1.4	1.2	1.3	1.1	1.0	0.9	0.8	0.7	0.8	0.7	0.6	0.7	0.6	0.7
Letters	3.7	3.8	3.8	4.2	4.6	5.1	4.9	4.9	4.5	4.6	4.4	4.8	4.2	4.0
Library Science	0.0	0.0	0.0	0.0	0.0	0.0	0.0	0.0	0.0	0.0	0.0	0.0	0.0	0.0
Mathematics	1.3	1.0	0.9	1.1	1.3	1.3	1.0	0.9	0.7	0.7	0.6	0.6	0.8	0.8
Physical Sciences	1.7	1.7	1.4	1.5	1.1	1.1	1.3	1.4	1.6	1.7	1.4	1.5	1.5	0.9
Psychology	5.1	5.4	6.3	6.4	7.0	7.6	7.4	7.0	7.0	7.2	7.0	5.9	6.5	5.6
Public Affairs	5.1	4.5	3.9	5.1	5.5	5.2	5.8	5.6	5.6	6.8	6.4	5.7	5.3	4.9
Social Sciences	7.6	8.4	8.5	9.0	8.7	9.7	10.2	10.6	10.6	10.1	10.1	9.9	9.2	9.1
Interdisciplinary Studies	7.3	7.9	8.4	8.3	8.8	8.7	9.7	9.5	9.1	10.2	11.1	11.3	9.9	10.0
Total, All Programs	100.0	100.0	100.0	100.0	100.0	100.0	100.0	100.0	100.0	100.0	100.0	100.0	100.0	100.0

Note: Percentages include postbaccalaureate students enrolled in and pursuing a second bachelor's degree. As of fall 1998, percentages include the CSU Statewide Nursing Program. This table does not include postbaccalaureate credential or certificate program enrollment. To maintain continuity with other tables in this section, the above percentages exclude International Programs. Degree program enrollment differs from enrollment by student level.

Table 87 (continued)

CSU Fall Enrollment in Undergraduate Programs,
Percent by Discipline Division and Ethnicity, from Fall 1987

Discipline Division	(Asian American)													
	1987	1988	1989	1990	1991	1992	1993	1994	1995	1996	1997	1998	1999	2000
Undeclared	9.3	9.3	10.5	9.1	8.8	8.9	8.1	9.2	8.8	8.6	8.9	9.0	8.9	9.9
Agriculture	0.4	0.4	0.4	0.4	0.4	0.5	0.5	0.6	0.6	0.5	0.6	0.5	0.5	0.5
Architecture	1.1	1.2	1.3	1.3	1.4	1.4	1.4	1.2	1.2	1.1	1.0	0.9	0.9	0.8
Area Studies	0.0	0.0	0.0	0.1	0.1	0.1	0.1	0.1	0.1	0.1	0.1	0.1	0.0	0.0
Biological Sciences	3.8	3.9	4.1	4.2	4.7	5.3	6.2	6.9	7.4	7.2	6.5	5.8	5.1	4.4
Business and Management	30.1	31.7	32.9	33.4	33.6	23.5	32.2	30.8	31.0	30.6	29.0	27.3	26.4	26.2
Communications	1.5	1.6	1.6	1.6	1.6	1.6	1.6	1.4	1.4	1.5	1.5	1.5	1.7	1.8
Computer and Information Sciences	10.9	9.4	6.9	7.9	7.4	7.3	7.3	7.4	7.8	9.0	11.6	15.2	17.6	17.7
Education	3.5	3.6	3.7	3.5	3.3	3.4	3.3	3.3	3.2	3.5	3.5	3.6	3.6	3.5
Engineering	21.0	20.1	19.3	18.2	17.2	16.1	15.0	13.2	12.2	11.6	11.2	11.1	11.0	11.3
Fine and Applied Arts	3.4	3.6	3.7	3.7	3.9	4.0	4.1	4.1	4.1	4.1	4.0	4.3	4.5	4.8
Foreign Languages	0.3	0.3	0.3	0.3	0.3	0.3	0.4	0.4	0.3	0.4	0.4	0.4	0.4	0.3
Health Professions	3.1	2.8	2.8	3.3	3.8	4.3	4.9	5.5	5.7	5.6	5.1	4.3	3.7	3.4
Home Economics	1.0	0.9	0.9	1.0	1.0	1.0	1.1	1.0	1.0	1.1	1.1	1.1	1.0	0.9
Letters	0.9	0.9	1.0	1.1	1.2	1.2	1.2	1.2	1.2	1.3	1.2	1.3	1.2	1.2
Library Science	0.0	0.0	0.0	0.0	0.0	0.0	0.0	0.0	0.0	0.0	0.0	0.0	0.0	0.0
Mathematics	1.8	1.6	1.4	1.2	1.1	1.0	0.9	0.9	0.9	0.7	0.8	0.8	0.8	0.8
Physical Sciences	1.5	1.4	1.3	1.2	1.1	1.2	1.3	1.5	1.4	1.4	1.2	1.1	1.0	0.8
Psychology	1.4	1.7	1.9	2.0	2.1	2.4	2.6	2.7	2.8	2.8	2.7	2.6	2.4	2.3
Public Affairs	1.3	1.4	1.4	1.5	1.7	2.0	2.2	2.5	2.6	2.7	2.7	2.3	2.2	2.2
Social Sciences	2.0	2.3	2.6	2.7	2.8	3.0	3.0	3.1	3.0	2.9	2.9	2.9	2.8	2.8
Interdisciplinary Studies	1.7	1.9	2.1	2.2	2.3	2.6	2.8	3.0	3.3	3.5	3.9	4.0	4.1	4.3
Total, All Programs	100.0	100.0	100.0	100.0	100.0	100.0	100.0	100.0	100.0	100.0	100.0	100.0	100.0	100.0
Discipline Division	(Filipino)													
	1987	1988	1989	1990	1991	1992	1993	1994	1995	1996	1997	1998	1999	2000
Undeclared	10.7	11.3	11.9	10.1	9.2	9.2	8.2	10.1	9.2	9.7	10.1	10.2	10.6	10.7
Agriculture	0.4	0.3	0.2	0.3	0.2	0.3	0.4	0.4	0.4	0.3	0.3	0.3	0.3	0.3
Architecture	1.2	1.3	1.4	1.3	1.3	1.2	1.2	1.0	0.8	0.6	0.6	0.6	0.7	0.7
Area Studies	0.0	0.0	0.0	0.0	0.0	0.0	0.1	0.0	0.1	0.0	0.0	0.0	0.1	0.1
Biological Sciences	5.1	4.8	5.0	5.1	5.3	5.5	6.1	7.1	7.9	8.2	7.9	7.3	6.6	6.1
Business and Management	28.5	28.5	27.9	26.8	25.4	23.9	22.7	20.2	20.1	19.0	19.0	18.5	19.0	19.3
Communications	3.4	3.4	3.2	3.4	3.4	3.2	3.0	2.9	2.8	2.9	3.0	3.3	3.4	3.8
Computer and Information Sciences	7.0	6.0	4.7	5.6	5.1	4.9	4.7	4.6	4.9	5.6	6.8	8.2	9.6	9.8
Education	3.8	3.3	3.5	3.4	3.3	3.9	4.4	4.9	4.9	5.6	5.7	6.1	5.7	5.2
Engineering	12.7	13.3	13.7	14.2	14.4	13.9	13.4	12.4	11.1	10.6	10.3	10.3	10.1	10.0
Fine and Applied Arts	3.4	3.6	3.5	3.8	3.9	3.8	3.8	3.8	4.1	4.1	4.4	4.4	4.6	5.1
Foreign Languages	0.2	0.2	0.2	0.2	0.2	0.2	0.2	0.3	0.3	0.2	0.2	0.1	0.1	0.1
Health Professions	8.4	8.6	9.4	10.7	11.9	13.0	14.2	14.4	15.2	14.3	12.8	11.3	10.3	10.0
Home Economics	1.4	1.3	1.2	1.0	1.0	1.1	1.0	1.0	0.9	1.0	1.1	1.2	1.0	1.0
Letters	1.4	1.4	1.3	1.4	1.6	1.9	1.9	1.9	1.8	1.9	1.7	1.6	1.7	1.8
Library Science	0.0	0.0	0.0	0.0	0.0	0.0	0.0	0.0	0.0	0.0	0.0	0.0	0.0	0.0
Mathematics	1.1	0.9	0.8	0.7	0.7	0.6	0.6	0.4	0.4	0.4	0.5	0.5	0.5	0.5
Physical Sciences	1.1	0.8	0.9	0.8	0.8	0.7	0.8	1.0	0.9	0.9	0.9	0.9	0.8	0.8
Psychology	2.9	3.1	3.2	3.4	3.7	3.8	4.0	4.1	4.4	4.5	4.5	4.6	4.3	4.1
Public Affairs	1.8	2.0	1.9	1.9	1.7	2.2	2.4	2.5	2.7	2.9	2.9	2.9	2.9	2.7
Social Sciences	3.3	3.3	3.6	3.6	4.1	4.2	4.2	3.9	3.8	3.6	3.6	3.6	3.8	3.8
Interdisciplinary Studies	2.3	2.6	2.5	2.4	2.8	2.7	2.9	3.1	3.3	3.5	3.6	4.0	4.0	4.0
Total, All Programs	100.0	100.0	100.0	100.0	100.0	100.0	100.0	100.0	100.0	100.0	100.0	100.0	100.0	100.0

Note: Percentages include postbaccalaureate students enrolled in and pursuing a second bachelor's degree. As of fall 1998, percentages include the CSU Statewide Nursing Program. This table does not include postbaccalaureate credential or certificate program enrollment. To maintain continuity with other tables in this section, the above percentages exclude International Programs. Degree program enrollment differs from enrollment by student level.

Table 87 (continued)

CSU Fall Enrollment in Undergraduate Programs,
Percent by Discipline Division and Ethnicity, from Fall 1987

(Mexican American)

Discipline Division	1987	1988	1989	1990	1991	1992	1993	1994	1995	1996	1997	1998	1999	2000
Undeclared	12.0	12.6	13.0	12.3	12.1	11.4	10.8	11.6	11.2	11.0	10.9	11.1	10.4	10.7
Agriculture	1.2	1.0	1.0	1.0	1.1	1.1	1.2	1.2	1.2	1.2	1.2	1.2	1.0	1.0
Architecture	1.2	1.4	1.3	1.2	1.2	1.2	1.0	1.0	0.9	0.9	0.8	0.7	0.8	0.7
Area Studies	0.1	0.1	0.1	0.1	0.1	0.1	0.1	0.1	0.1	0.1	0.1	0.1	0.1	0.1
Biological Sciences	3.3	3.2	3.0	3.1	3.3	3.3	3.6	3.9	4.2	4.3	4.3	4.1	4.0	3.6
Business and Management	23.0	22.3	21.7	20.9	20.2	19.4	18.7	17.8	17.3	16.4	15.8	15.6	15.7	15.7
Communications	3.7	3.7	3.7	3.6	3.6	3.4	3.3	3.0	2.9	3.0	2.9	3.0	3.2	3.3
Computer and Information Sciences	3.0	2.6	2.2	2.2	2.1	2.0	2.0	1.9	2.0	2.1	2.3	2.7	3.0	3.0
Education	5.7	5.5	5.8	5.6	5.9	5.7	5.6	5.7	5.8	6.0	5.9	6.3	6.3	6.3
Engineering	7.8	7.9	8.3	8.2	8.5	8.8	8.7	7.7	7.3	6.6	6.4	6.1	6.0	6.0
Fine and Applied Arts	3.5	3.4	3.4	3.5	3.3	3.3	3.3	3.2	3.3	3.3	3.5	3.7	3.7	3.8
Foreign Languages	1.6	1.6	1.6	1.7	1.6	1.8	1.8	1.9	1.9	1.9	1.9	1.9	1.7	1.7
Health Professions	3.6	3.5	3.1	3.3	3.4	3.6	3.8	4.0	4.3	4.1	3.8	3.6	3.5	3.4
Home Economics	1.0	0.9	0.9	0.8	0.8	0.7	0.6	0.7	0.6	0.5	0.5	0.6	0.6	0.6
Letters	2.6	2.5	2.7	2.8	2.8	3.1	3.2	3.3	3.2	3.3	3.5	3.3	3.2	3.2
Library Science	0.0	0.0	0.0	0.0	0.0	0.0	0.0	0.0	0.0	0.0	0.0	0.0	0.0	0.0
Mathematics	1.2	1.1	1.2	1.1	1.1	1.1	1.1	1.0	1.1	1.0	1.0	1.0	1.0	1.0
Physical Sciences	0.9	0.8	0.8	0.8	0.8	0.7	0.8	0.8	0.7	0.8	0.8	0.7	0.7	0.6
Psychology	4.7	5.2	5.6	5.9	6.0	6.1	6.6	6.9	7.1	7.0	6.7	6.4	6.2	6.1
Public Affairs	5.6	5.7	5.5	5.3	5.6	6.2	6.6	6.8	7.2	7.5	7.6	7.6	7.5	7.4
Social Sciences	6.1	6.5	6.7	7.2	7.3	7.7	7.9	8.3	8.4	8.6	8.4	8.2	8.2	8.3
Interdisciplinary Studies	8.4	8.7	8.6	9.3	9.3	9.4	9.3	9.4	9.7	10.5	11.5	12.3	13.2	13.3
Total, All Programs	100.0	100.0	100.0	100.0	100.0	100.0	100.0	100.0	100.0	100.0	100.0	100.0	100.0	100.0

(Other Latino)

Discipline Division	1987	1988	1989	1990	1991	1992	1993	1994	1995	1996	1997	1998	1999	2000
Undeclared	10.8	11.5	11.8	11.2	11.7	11.7	9.6	11.1	10.8	10.3	10.5	10.3	9.9	10.6
Agriculture	1.2	1.1	1.1	1.1	1.1	1.1	1.0	1.2	1.4	1.4	1.3	1.2	1.2	1.1
Architecture	1.6	1.7	2.0	1.8	1.7	1.5	1.2	1.0	0.8	0.8	0.8	0.8	0.8	0.8
Area Studies	0.2	0.1	0.2	0.2	0.2	0.2	0.2	0.2	0.2	0.2	0.2	0.2	0.1	0.1
Biological Sciences	4.3	4.0	3.7	3.6	4.0	4.2	4.8	4.9	5.5	5.7	5.5	5.6	5.1	4.9
Business and Management	23.2	23.4	22.8	21.4	20.4	20.1	19.6	18.4	18.1	17.7	16.8	16.5	16.6	16.6
Communications	3.5	3.7	3.9	4.0	3.9	4.2	3.9	3.7	3.8	3.9	3.9	3.9	4.3	4.1
Computer and Information Sciences	4.0	3.6	2.8	3.1	2.6	2.5	2.5	2.6	2.8	3.0	3.3	3.8	4.3	4.5
Education	5.0	4.9	4.8	5.0	5.3	5.0	5.3	5.3	5.1	5.2	5.4	5.9	5.8	5.7
Engineering	9.3	8.5	8.4	8.7	8.6	8.3	8.2	8.0	7.3	7.1	6.9	6.5	6.6	6.4
Fine and Applied Arts	4.3	4.1	4.0	4.1	4.0	3.8	4.1	4.0	4.0	4.2	4.4	4.4	4.7	4.9
Foreign Languages	2.3	2.2	2.1	2.2	2.2	2.2	2.3	2.1	2.1	2.0	2.1	2.1	1.8	1.6
Health Professions	3.5	3.4	3.5	3.7	3.7	3.9	4.3	4.3	4.6	4.3	4.2	4.2	4.1	3.8
Home Economics	1.1	1.0	1.2	1.0	0.9	1.0	1.1	0.9	0.9	0.8	0.8	0.8	0.9	0.7
Letters	2.5	2.6	2.8	2.8	3.1	3.6	3.6	3.6	3.6	3.8	3.8	3.7	3.5	3.4
Library Science	0.0	0.0	0.0	0.0	0.0	0.0	0.0	0.0	0.0	0.0	0.0	0.0	0.0	0.0
Mathematics	1.1	1.1	1.1	1.0	1.1	1.0	0.9	0.9	0.8	1.0	0.9	0.7	0.7	0.7
Physical Sciences	1.0	0.9	1.0	1.0	1.0	0.9	1.0	0.9	1.0	1.0	0.9	0.7	0.8	0.7
Psychology	5.3	5.8	6.1	6.9	6.7	6.7	7.3	7.8	7.5	7.3	7.4	7.1	6.9	7.1
Public Affairs	3.3	3.4	3.3	3.8	3.8	4.0	4.6	4.9	4.9	5.1	5.0	5.3	5.3	5.3
Social Sciences	6.5	6.5	6.9	6.8	7.2	7.9	7.8	7.6	7.6	7.4	7.3	7.2	7.3	7.1
Interdisciplinary Studies	6.1	6.3	6.3	6.6	6.6	6.3	6.7	6.6	7.0	7.9	8.4	8.9	9.5	9.7
Total, All Programs	100.0	100.0	100.0	100.0	100.0	100.0	100.0	100.0	100.0	100.0	100.0	100.0	100.0	100.0

Note: Percentages include postbaccalaureate students enrolled in and pursuing a second bachelor's degree. As of fall 1998, percentages include the CSU Statewide Nursing Program. This table does not include postbaccalaureate credential or certificate program enrollment. To maintain continuity with other tables in this section, the above percentages exclude International Programs. Degree program enrollment differs from enrollment by student level.

Table 87 (continued)

CSU Fall Enrollment in Undergraduate Programs,
Percent by Discipline Division and Ethnicity, from Fall 1987

Discipline Division	(Pacific Islander)													
	1987	1988	1989	1990	1991	1992	1993	1994	1995	1996	1997	1998	1999	2000
Undeclared	9.3	9.4	11.4	10.1	9.6	9.3	8.4	9.7	9.9	8.8	10.0	11.6	10.9	12.2
Agriculture	1.8	1.1	1.0	1.2	0.9	1.0	0.8	0.8	1.0	1.0	0.8	1.2	0.9	0.8
Architecture	0.9	1.0	1.4	1.4	1.9	1.8	1.5	0.8	0.8	0.7	0.5	0.9	0.8	0.8
Area Studies	0.0	0.1	0.1	0.1	0.2	0.1	0.1	0.1	0.0	0.1	0.0	0.1	0.1	0.0
Biological Sciences	4.9	4.0	3.2	3.7	3.7	4.3	5.3	5.2	6.7	6.1	5.9	6.0	5.8	5.9
Business and Management	26.8	25.2	27.9	25.7	24.4	24.0	23.6	22.0	21.2	20.3	19.9	21.2	20.2	19.6
Communications	3.8	3.0	3.2	3.5	3.9	3.8	3.6	3.2	2.5	3.0	2.6	2.7	2.8	3.2
Computer and Information Sciences	5.5	5.1	4.3	3.7	4.0	3.5	3.2	2.4	2.8	2.9	4.0	5.2	5.4	6.3
Education	4.8	6.3	6.1	5.5	5.3	5.3	5.3	6.6	6.1	5.2	6.0	6.5	6.2	5.6
Engineering	9.9	10.0	8.6	8.2	8.0	8.4	8.3	7.6	6.9	7.9	8.4	6.5	6.1	6.7
Fine and Applied Arts	4.2	5.0	4.2	4.3	3.7	3.8	3.8	3.6	3.9	3.8	3.6	3.5	3.5	3.6
Foreign Languages	0.4	0.3	0.2	0.3	0.5	0.3	0.3	0.2	0.3	0.5	0.3	0.2	0.1	0.2
Health Professions	3.5	3.1	3.3	3.7	3.7	4.3	4.4	4.7	4.6	5.0	5.1	4.8	5.2	3.9
Home Economics	1.2	1.5	1.3	1.2	0.9	0.4	0.6	0.3	0.7	0.7	0.4	0.5	0.6	0.6
Letters	1.7	2.0	2.3	3.7	2.8	3.4	3.0	3.5	3.7	3.8	3.4	3.2	4.0	3.8
Library Science	0.0	0.0	0.0	0.0	0.0	0.0	0.0	0.0	0.0	0.0	0.0	0.0	0.0	0.0
Mathematics	1.7	1.4	0.0	0.6	1.0	1.0	0.8	1.3	1.3	1.0	1.2	1.2	1.1	1.1
Physical Sciences	1.2	1.4	0.8	1.2	1.0	0.8	0.9	1.0	1.2	1.0	1.5	0.9	0.6	1.3
Psychology	3.6	3.6	1.5	3.7	4.2	4.5	4.4	4.7	4.8	4.4	5.4	4.7	4.6	4.4
Public Affairs	5.0	5.6	2.8	6.8	7.6	7.1	7.5	6.6	6.1	6.7	6.0	5.2	5.6	5.6
Social Sciences	6.8	7.2	5.3	7.3	7.6	8.5	8.8	9.3	8.6	9.2	8.5	6.5	7.1	6.1
Interdisciplinary Studies	3.3	3.8	6.8	4.5	5.1	4.5	5.4	6.4	6.9	8.1	6.8	7.4	8.3	8.4
Total, All Programs	100.0	100.0	100.0	100.0	100.0	100.0	100.0	100.0	100.0	100.0	100.0	100.0	100.0	100.0

Discipline Division	(White, Non-Latino)													
	1987	1988	1989	1990	1991	1992	1993	1994	1995	1996	1997	1998	1999	2000
Undeclared	9.2	9.1	9.1	8.0	7.0	7.1	5.6	6.9	6.9	7.3	7.8	8.1	8.3	9.1
Agriculture	2.6	2.5	2.6	2.6	2.7	2.8	3.0	3.3	3.3	3.4	3.5	3.5	3.3	3.3
Architecture	1.0	1.0	1.0	1.0	1.0	1.0	1.0	1.0	0.9	0.8	0.9	0.9	0.9	0.9
Area Studies	0.1	0.1	0.1	0.1	0.1	0.1	0.1	0.1	0.1	0.1	0.1	0.1	0.1	0.1
Biological Sciences	3.4	3.3	3.3	3.4	3.6	3.9	4.2	4.6	4.8	5.0	5.0	4.7	4.4	4.1
Business and Management	23.1	22.4	21.7	21.0	20.0	18.7	18.2	17.1	16.8	16.6	16.3	16.4	16.5	16.4
Communications	5.1	5.2	5.2	5.1	5.1	5.0	4.8	4.5	4.3	4.3	4.2	4.2	4.6	4.9
Computer and Information Sciences	3.1	2.7	2.1	2.5	2.4	2.4	2.5	2.5	2.7	2.9	3.3	3.8	4.0	4.1
Education	5.1	5.0	5.0	5.2	5.4	5.4	5.6	5.7	5.5	5.5	5.5	5.6	5.6	5.4
Engineering	6.8	6.6	6.5	6.4	6.5	6.5	6.6	6.2	6.1	5.9	5.7	5.9	5.7	5.8
Fine and Applied Arts	5.3	5.4	5.4	5.5	5.4	5.5	5.4	5.4	5.6	5.7	5.8	5.8	6.0	6.2
Foreign Languages	0.6	0.6	0.6	0.6	0.6	0.6	0.6	0.5	0.6	0.5	0.6	0.5	0.5	0.5
Health Professions	3.7	3.4	3.4	3.5	3.9	4.2	4.6	4.7	4.8	4.5	4.1	4.0	3.7	3.4
Home Economics	1.8	1.7	1.6	1.6	1.5	1.4	1.3	1.3	1.2	1.2	1.2	1.2	1.1	1.0
Letters	4.4	4.6	4.9	5.1	5.4	5.4	5.4	5.4	5.4	5.3	5.2	5.0	5.0	5.0
Library Science	0.0	0.0	0.0	0.0	0.0	0.0	0.0	0.0	0.0	0.0	0.0	0.0	0.0	0.0
Mathematics	1.4	1.2	1.2	1.1	1.1	1.0	1.0	1.0	1.0	0.9	1.0	0.9	0.9	0.9
Physical Sciences	1.7	1.5	1.5	1.4	1.5	1.5	1.6	1.6	1.6	1.6	1.5	1.3	1.2	1.2
Psychology	4.8	5.2	5.5	5.8	6.1	6.3	6.6	6.6	6.5	6.3	5.9	5.5	5.3	5.2
Public Affairs	3.3	3.3	3.4	3.5	3.9	4.1	4.4	4.3	4.4	4.5	4.4	4.1	4.0	3.7
Social Sciences	6.5	7.0	7.3	7.8	8.0	8.4	8.4	8.2	8.2	8.2	7.9	7.5	7.5	7.4
Interdisciplinary Studies	7.3	8.0	8.5	8.8	9.0	8.8	9.2	9.1	9.3	9.5	10.1	10.9	11.2	11.4
Total, All Programs	100.0	100.0	100.0	100.0	100.0	100.0	100.0	100.0	100.0	100.0	100.0	100.0	100.0	100.0

Note: Percentages include postbaccalaureate students enrolled in and pursuing a second bachelor's degree. As of fall 1998, percentages include the CSU Statewide Nursing Program. This table does not include postbaccalaureate credential or certificate program enrollment. To maintain continuity with other tables in this section, the above percentages exclude International Programs. Degree program enrollment differs from enrollment by student level.

Table 87 (continued)

CSU Fall Enrollment in Undergraduate Programs,
Percent by Discipline Division and Ethnicity, from Fall 1987

(Total, All Groups)

Discipline Division	1987	1988	1989	1990	1991	1992	1993	1994	1995	1996	1997	1998	1999	2000
Undeclared	9.7	9.7	10.1	9.1	8.4	8.4	7.3	8.6	8.4	8.6	8.9	9.2	9.1	9.8
Agriculture	2.0	1.9	1.9	1.9	1.9	1.9	2.0	2.1	2.0	2.0	2.0	2.0	1.9	1.9
Architecture	1.0	1.0	1.1	1.1	1.1	1.0	1.0	1.0	0.9	0.8	0.8	0.8	0.8	0.8
Area Studies	0.0	0.1	0.1	0.1	0.1	0.1	0.1	0.1	0.1	0.1	0.1	0.1	0.1	0.1
Biological Sciences	3.5	3.4	3.4	3.6	3.8	4.1	4.5	5.0	5.4	5.5	5.3	5.0	4.7	4.3
Business and Management	24.2	23.9	23.6	23.0	22.3	21.3	20.8	19.7	19.6	19.2	18.6	18.3	18.2	18.2
Communications	4.5	4.5	4.5	4.4	4.3	4.2	4.0	3.7	3.6	3.7	3.6	3.7	3.9	4.1
Computer and Information Sciences	4.3	3.7	3.0	3.6	3.5	3.4	3.3	3.4	3.7	4.1	4.9	5.9	6.7	6.8
Education	4.9	4.8	4.8	4.8	4.8	4.8	5.1	5.1	4.9	5.0	5.0	5.2	5.2	5.1
Engineering	8.7	8.6	8.6	8.7	8.7	8.7	8.5	7.9	7.5	7.2	7.0	6.9	6.9	7.0
Fine and Applied Arts	4.7	4.8	4.7	4.9	4.8	4.8	4.6	4.5	4.9	4.9	5.1	5.2	5.3	5.5
Foreign Languages	0.6	0.7	0.6	0.7	0.7	0.7	0.7	0.8	0.8	0.8	0.8	0.8	0.7	0.7
Health Professions	3.8	3.6	3.5	3.7	4.1	4.4	5.1	5.3	5.3	5.0	4.6	4.4	4.0	3.8
Home Economics	1.5	1.4	1.4	1.3	1.2	1.1	1.1	1.1	1.0	1.0	1.0	1.0	0.9	0.9
Letters	3.6	3.7	3.8	4.0	4.2	4.2	4.1	4.0	4.1	4.0	4.0	3.9	3.8	3.8
Library Science	0.0	0.0	0.0	0.0	0.0	0.0	0.0	0.0	0.0	0.0	0.0	0.0	0.0	0.0
Mathematics	1.4	1.2	1.1	1.1	1.0	1.0	0.9	0.9	0.9	0.9	0.9	0.8	0.9	0.9
Physical Sciences	1.5	1.4	1.3	1.3	1.3	1.3	1.3	1.4	1.3	1.3	1.3	1.1	1.0	1.0
Psychology	4.4	4.8	5.1	5.2	5.4	5.7	6.0	6.0	6.0	5.9	5.7	5.3	5.2	5.1
Public Affairs	3.5	3.6	3.6	3.6	3.8	4.1	4.6	4.7	4.7	4.8	4.7	4.5	4.4	4.2
Social Sciences	5.9	6.3	6.6	7.0	7.2	7.5	7.5	7.4	7.5	7.4	7.3	7.0	7.0	6.9
Interdisciplinary Studies	6.4	6.9	7.2	7.2	7.4	7.2	7.6	7.5	7.5	7.8	8.3	8.9	9.3	9.4
Total, All Programs	100.0	100.0	100.0	100.0	100.0	100.0	100.0	100.0	100.0	100.0	100.0	100.0	100.0	100.0

Note: Percentages include postbaccalaureate students enrolled in and pursuing a second bachelor's degree. As of fall 1998, percentages include the CSU Statewide Nursing Program. This table does not include postbaccalaureate credential or certificate program enrollment. To maintain continuity with other tables in this section, the above percentages exclude International Programs. Degree program enrollment differs from enrollment by student level.

Table 88

CSU Fall Systemwide Enrollment in Master's Programs,
Percent by Discipline Division and Ethnicity, from Fall 1987

(African American)

Discipline Division	1987	1988	1989	1990	1991	1992	1993	1994	1995	1996	1997	1998	1999	2000
Undeclared	2.5	3.1	2.7	3.0	0.8	0.9	0.1	0.0	0.1	0.0	0.2	0.4	0.6	0.7
Agriculture	0.2	0.2	0.3	0.3	0.3	0.2	0.1	0.1	0.1	0.2	0.2	0.2	0.1	0.1
Architecture	1.0	1.4	1.0	1.4	1.0	0.6	0.6	0.3	0.3	0.4	0.5	1.0	0.8	0.4
Area Studies	0.0	0.1	0.0	0.0	0.0	0.1	0.2	0.2	0.1	0.0	0.1	0.1	0.1	0.1
Biological Sciences	1.4	1.5	1.7	1.9	1.3	1.5	1.5	1.6	1.2	1.1	0.9	1.1	1.1	1.3
Business and Management	7.8	8.5	8.6	8.4	8.3	8.0	7.6	6.6	5.9	6.2	6.7	5.7	5.2	5.0
Communications	0.8	1.0	0.6	0.6	0.9	1.1	0.8	0.7	0.5	1.0	1.1	1.0	0.7	1.3
Computer and Information Sciences	0.3	0.7	0.4	0.4	1.1	0.8	0.7	1.0	1.1	1.0	0.9	1.0	0.9	0.8
Education	35.4	31.6	30.0	28.4	28.5	30.5	30.3	30.6	32.9	35.6	37.4	37.6	39.0	40.4
Engineering	2.3	4.0	4.3	4.5	4.3	3.8	4.5	4.0	3.4	3.0	2.4	2.6	3.0	2.5
Fine and Applied Arts	2.3	1.6	2.0	2.2	2.7	2.0	2.0	2.1	2.1	2.1	1.5	1.7	1.7	1.6
Foreign Languages	0.4	0.3	0.3	0.2	0.3	0.2	0.2	0.2	0.3	0.3	0.3	0.2	0.2	0.2
Health Professions	7.4	7.1	7.6	8.1	8.2	8.0	7.7	7.4	8.3	7.1	7.4	8.2	8.8	8.8
Home Economics	0.8	1.1	0.4	0.5	1.9	1.9	1.6	1.6	1.9	2.1	1.9	2.1	1.9	1.7
Letters	3.4	2.6	2.7	2.9	3.7	3.7	4.2	4.9	4.9	5.4	5.1	4.9	4.9	4.6
Library Science	0.0	0.2	0.4	0.5	0.3	0.4	0.5	0.5	0.4	0.5	0.4	0.3	0.4	0.4
Mathematics	1.2	0.7	1.2	1.0	0.8	0.4	0.6	0.4	0.9	1.1	0.7	0.6	0.7	0.7
Physical Sciences	1.3	1.2	1.6	1.2	1.3	1.2	1.3	1.3	1.2	0.8	0.8	0.5	0.5	0.6
Psychology	4.1	5.0	4.0	3.8	4.3	4.3	4.9	4.8	4.5	4.7	4.6	3.9	3.5	3.9
Public Affairs	22.5	21.9	24.2	25.0	24.0	23.7	23.0	24.0	22.1	20.2	18.7	20.0	19.6	18.9
Social Sciences	4.6	5.4	5.6	5.3	5.3	5.8	6.7	6.1	6.1	5.5	6.6	5.0	4.6	4.8
Interdisciplinary Studies	0.3	0.7	0.6	0.4	0.9	0.8	1.0	1.3	1.3	1.6	1.6	1.8	1.5	1.4
Total, All Programs	100.0	100.0	100.0	100.0	100.0	100.0	100.0	100.0	100.0	100.0	100.0	100.0	100.0	100.0

(American Indian)

Discipline Division	1987	1988	1989	1990	1991	1992	1993	1994	1995	1996	1997	1998	1999	2000
Undeclared	2.8	2.8	2.8	2.2	1.6	0.3	0.0	0.0	0.3	0.0	0.0	0.0	0.0	0.6
Agriculture	0.6	0.6	0.6	0.0	0.9	0.7	0.4	0.7	1.3	1.9	1.5	0.6	0.3	1.2
Architecture	1.6	2.1	0.6	1.0	0.3	0.7	0.0	0.0	0.3	0.6	0.3	0.3	0.3	0.6
Area Studies	0.3	0.3	0.6	1.0	0.3	0.7	0.4	0.4	0.0	0.0	0.0	0.0	0.0	0.0
Biological Sciences	2.2	1.5	0.9	1.6	2.5	2.0	1.8	2.1	3.0	3.2	2.1	2.7	2.4	2.4
Business and Management	15.8	10.7	9.2	11.5	8.4	10.1	7.1	9.1	7.0	9.6	8.8	7.7	8.8	7.0
Communications	1.2	1.2	0.3	1.0	0.0	0.0	0.0	1.1	1.3	0.6	1.2	1.2	0.9	0.6
Computer and Information Sciences	2.2	1.5	1.2	2.6	2.2	1.3	1.4	2.1	1.7	0.3	0.6	0.9	0.6	1.2
Education	24.8	28.2	32.8	25.2	27.6	28.1	29.1	26.7	30.5	27.6	27.1	23.7	27.7	32.8
Engineering	3.4	4.0	3.4	2.6	2.2	2.3	2.5	2.1	1.0	2.6	2.4	2.1	2.4	1.8
Fine and Applied Arts	3.1	5.2	5.2	6.1	6.2	5.6	4.3	4.9	5.7	5.8	3.0	4.4	3.8	2.4
Foreign Languages	0.3	0.0	0.0	0.3	0.9	0.3	0.0	0.4	0.7	0.0	0.0	0.3	0.6	0.0
Health Professions	6.8	8.0	5.8	8.0	8.4	6.9	6.4	6.0	5.7	7.7	8.2	13.9	13.9	11.6
Home Economics	0.9	1.2	1.5	1.3	2.5	2.9	2.5	2.5	2.0	1.9	0.9	1.5	0.6	1.5
Letters	5.3	4.6	7.4	8.9	9.9	10.5	9.6	8.8	7.7	6.1	4.9	6.5	4.4	3.6
Library Science	0.6	0.3	0.3	0.0	0.0	1.0	0.4	0.0	0.3	0.6	1.2	1.8	1.2	1.2
Mathematics	0.9	0.6	0.6	0.6	0.6	0.3	0.7	0.7	1.7	0.6	0.3	0.6	0.9	1.2
Physical Sciences	2.8	2.5	1.5	1.3	0.6	1.0	1.8	1.1	0.7	0.6	1.2	0.6	0.9	0.9
Psychology	5.3	6.1	5.2	6.1	4.3	3.9	2.8	7.0	5.4	4.8	4.9	3.0	3.5	2.7
Public Affairs	10.2	12.0	11.7	11.5	10.6	9.8	13.8	14.7	12.1	15.1	14.0	15.4	16.2	14.9
Social Sciences	6.8	5.5	6.7	5.8	6.8	9.2	11.7	8.1	7.7	6.7	12.5	9.8	8.0	8.2
Interdisciplinary Studies	1.9	0.9	1.5	1.6	3.1	2.6	3.5	1.8	3.7	3.5	4.6	3.3	2.7	3.3
Total, All Programs	100.0	100.0	100.0	100.0	100.0	100.0	100.0	100.0	100.0	100.0	100.0	100.0	100.0	100.0

Note: Degree program enrollment differs from enrollment by student level.
To maintain continuity with other tables in this section, the above percentages exclude enrollment in International Programs.

Table 88 (continued)

CSU Fall Systemwide Enrollment in Master's Programs,
Percent by Discipline Division and Ethnicity, from Fall 1987

(Asian American)

Discipline Division	1987	1988	1989	1990	1991	1992	1993	1994	1995	1996	1997	1998	1999	2000
Undeclared	2.6	1.3	4.2	2.7	0.6	0.6	0.0	0.0	0.0	0.0	0.1	0.2	0.1	0.3
Agriculture	0.1	0.3	0.2	0.2	0.3	0.3	0.2	0.2	0.2	0.2	0.2	0.4	0.4	0.4
Architecture	0.5	0.7	0.7	0.8	0.5	0.6	0.5	0.7	0.8	0.8	0.8	0.7	0.7	0.6
Area Studies	0.1	0.2	0.1	0.1	0.2	0.2	0.3	0.2	0.1	0.2	0.3	0.3	0.3	0.1
Biological Sciences	1.7	1.8	1.8	1.8	2.0	2.2	2.1	2.9	3.1	3.3	3.2	3.2	2.3	2.4
Business and Management	22.7	22.4	22.4	25.7	24.3	22.7	23.1	22.3	22.2	23.1	23.6	20.7	20.4	19.0
Communications	0.5	0.4	0.3	0.3	0.5	0.5	0.5	0.4	0.4	0.5	0.6	0.7	0.5	0.5
Computer and Information Sciences	10.8	9.3	5.4	7.4	10.4	9.8	9.0	8.4	8.7	8.2	8.1	10.1	11.1	11.4
Education	11.0	12.1	11.7	9.7	9.6	10.2	10.0	10.1	11.6	13.0	14.5	16.1	17.8	18.8
Engineering	24.6	26.3	27.8	25.8	24.4	25.5	22.8	22.0	19.5	17.0	15.3	14.8	14.3	13.1
Fine and Applied Arts	2.6	2.5	2.4	2.3	2.4	2.3	2.5	2.2	2.5	2.8	2.9	2.7	2.3	2.8
Foreign Languages	0.4	0.3	0.5	0.5	0.6	0.8	0.6	0.6	0.8	0.7	0.5	0.6	0.5	0.3
Health Professions	4.5	4.7	4.6	4.4	5.5	4.7	5.6	6.0	6.5	7.0	7.6	8.5	8.5	9.1
Home Economics	0.6	0.8	0.9	0.8	1.0	1.0	1.2	1.2	1.6	1.5	1.4	1.1	1.3	1.3
Letters	2.5	2.9	3.1	2.8	3.8	4.2	4.7	4.6	4.9	4.6	4.3	4.1	4.0	3.8
Library Science	0.4	0.3	0.2	0.3	4.0	0.5	0.4	0.5	0.5	0.5	0.5	0.6	0.6	0.6
Mathematics	2.5	2.1	1.8	1.7	1.8	1.8	1.9	2.2	2.0	2.0	1.9	1.8	1.8	2.3
Physical Sciences	3.3	3.1	3.0	2.7	2.0	2.1	2.3	2.8	2.8	2.4	2.4	2.4	2.1	2.1
Psychology	1.5	1.5	1.6	1.5	1.4	1.6	2.1	1.9	1.6	2.2	1.9	1.6	1.8	2.1
Public Affairs	4.6	4.3	4.0	5.0	5.2	4.8	5.6	5.7	5.3	5.7	5.4	5.3	5.5	5.2
Social Sciences	2.1	2.1	2.4	2.7	2.4	2.9	3.4	4.0	3.6	3.6	3.8	3.5	2.9	2.8
Interdisciplinary Studies	0.5	0.7	0.8	0.6	0.9	0.9	1.1	1.1	1.0	0.7	0.8	0.7	0.9	0.8
Total, All Programs	100.0	100.0	100.0	100.0	100.0	100.0	100.0	100.0	100.0	100.0	100.0	100.0	100.0	100.0

(Filipino)

Discipline Division	1987	1988	1989	1990	1991	1992	1993	1994	1995	1996	1997	1998	1999	2000
Undeclared	2.3	3.0	3.9	3.6	0.5	1.5	0.0	0.0	0.2	0.0	0.1	0.1	0.0	0.1
Agriculture	0.0	0.0	0.0	0.0	0.0	0.0	0.0	0.0	0.0	0.3	0.3	0.0	0.4	0.4
Architecture	0.8	0.0	0.3	0.6	0.5	0.6	1.0	0.7	0.8	1.2	1.3	0.7	1.1	0.8
Area Studies	0.4	0.4	0.7	0.0	0.5	0.4	0.2	0.2	0.5	0.8	0.4	0.1	0.1	0.1
Biological Sciences	3.0	2.6	2.3	2.1	2.5	4.5	2.7	3.1	2.5	3.0	3.0	2.3	2.2	1.8
Business and Management	16.2	17.2	16.9	17.8	16.0	14.9	12.7	14.6	12.3	15.1	15.3	12.5	11.5	10.0
Communications	0.4	0.4	0.7	0.3	0.7	0.8	1.0	0.5	0.8	0.8	1.1	0.8	0.9	1.4
Computer and Information Sciences	4.1	3.4	2.0	2.7	3.4	3.6	3.8	3.6	2.5	2.0	2.6	2.3	2.2	2.1
Education	22.2	18.7	15.0	15.7	16.2	16.1	15.5	17.4	20.1	20.2	22.7	22.2	22.2	25.2
Engineering	10.5	9.3	11.7	9.5	9.8	9.1	9.2	7.8	9.8	10.7	9.4	8.6	6.2	7.4
Fine and Applied Arts	1.1	1.5	2.0	3.0	2.2	1.5	1.5	0.9	1.8	1.7	2.0	1.8	1.9	2.2
Foreign Languages	0.0	0.4	0.3	0.3	0.7	0.2	0.2	0.0	0.2	0.2	0.1	0.3	0.2	0.1
Health Professions	10.5	12.7	15.6	13.6	16.7	13.6	20.0	18.8	16.4	16.7	16.3	20.9	23.3	22.1
Home Economics	2.6	1.9	2.6	2.1	2.7	2.1	2.1	2.2	1.7	1.5	1.6	2.0	1.9	1.6
Letters	3.8	5.2	2.9	4.1	5.7	6.8	6.5	6.1	5.0	3.9	4.4	5.0	5.0	4.4
Library Science	0.0	0.0	0.0	0.3	0.2	0.4	0.8	0.4	0.2	0.0	0.0	0.4	0.6	0.4
Mathematics	2.3	2.2	1.0	2.1	0.7	0.6	1.0	0.9	1.3	0.8	0.9	0.9	0.5	0.7
Physical Sciences	3.0	2.2	3.3	2.1	1.2	2.3	2.1	1.8	1.3	1.8	1.1	1.7	1.8	2.1
Psychology	1.9	2.6	2.0	1.5	2.5	3.4	4.2	2.9	4.0	2.7	3.3	4.0	4.0	3.7
Public Affairs	13.2	13.1	12.4	14.5	12.5	12.5	11.7	12.7	12.8	11.3	9.6	9.4	9.3	9.9
Social Sciences	1.1	2.6	4.2	3.0	3.7	3.8	3.1	4.0	4.2	4.4	3.7	2.7	3.8	2.9
Interdisciplinary Studies	0.8	0.7	0.3	1.5	1.0	1.1	0.8	1.4	1.7	1.2	0.6	1.2	0.8	0.5
Total, All Programs	100.0	100.0	100.0	100.0	100.0	100.0	100.0	100.0	100.0	100.0	100.0	100.0	100.0	100.0

Note: Degree program enrollment differs from enrollment by student level.
To maintain continuity with other tables in this section, the above percentages exclude enrollment in International Programs.

Table 88 (continued)

CSU Fall Systemwide Enrollment in Master's Programs,
Percent by Discipline Division and Ethnicity, from Fall 1987

(Mexican American)

Discipline Division	1987	1988	1989	1990	1991	1992	1993	1994	1995	1996	1997	1998	1999	2000
Undeclared	1.6	4.1	2.3	2.2	1.6	0.8	0.0	0.0	0.2	0.0	0.4	0.6	0.6	0.6
Agriculture	0.2	0.4	0.4	0.5	0.4	0.4	0.2	0.2	0.5	0.3	0.4	0.4	0.4	0.2
Architecture	0.9	0.9	0.6	0.6	0.5	0.5	0.6	0.8	0.7	0.8	0.7	0.3	0.5	0.3
Area Studies	0.2	0.4	0.3	0.4	0.3	0.5	0.8	0.8	0.7	0.9	0.7	0.8	0.7	0.8
Biological Sciences	1.1	1.3	1.3	1.5	1.3	1.3	1.3	1.1	1.4	1.2	1.3	1.4	1.4	1.4
Business and Management	6.9	7.1	7.2	7.8	7.8	6.8	5.7	5.2	5.2	5.2	5.0	4.4	4.4	3.5
Communications	0.3	0.1	0.4	0.6	0.7	0.6	0.6	0.5	0.5	0.6	0.7	0.4	0.2	0.4
Computer and Information Sciences	0.9	0.8	0.3	0.9	0.8	0.8	0.9	0.5	0.6	0.4	0.6	0.7	0.9	0.7
Education	43.8	38.6	40.5	34.1	33.0	35.9	34.1	35.7	38.1	38.7	41.0	43.8	45.6	48.2
Engineering	2.5	3.3	3.4	4.4	4.8	4.6	4.6	3.7	3.5	3.5	3.1	2.9	2.7	2.2
Fine and Applied Arts	3.2	2.7	3.0	2.4	2.4	2.1	2.7	2.4	2.0	2.4	2.0	2.0	1.8	1.5
Foreign Languages	2.6	2.7	2.9	3.6	3.2	3.2	3.4	3.3	3.1	3.1	2.9	3.3	3.0	3.2
Health Professions	6.8	6.6	5.9	6.7	6.8	6.6	7.6	7.5	6.4	6.5	5.7	6.0	6.6	6.8
Home Economics	0.4	0.6	0.5	0.4	1.0	1.4	1.3	1.2	1.6	1.7	1.6	1.4	1.2	1.1
Letters	3.6	3.4	4.6	5.2	6.1	5.5	6.3	7.2	6.5	6.1	5.4	5.3	4.8	4.9
Library Science	0.2	0.1	0.4	0.4	0.4	0.6	0.6	0.6	0.6	0.3	0.3	0.3	0.3	0.3
Mathematics	0.5	0.4	0.6	0.6	0.7	1.0	0.9	1.0	1.2	1.5	1.5	0.9	0.9	1.0
Physical Sciences	1.3	1.4	1.2	0.7	1.1	1.1	0.9	0.7	1.0	0.9	1.0	0.6	0.6	0.7
Psychology	4.1	4.6	4.0	3.5	4.1	3.8	3.8	4.6	3.9	3.5	3.4	2.9	2.8	2.4
Public Affairs	15.2	15.7	14.7	16.9	16.6	16.0	16.5	14.2	14.5	14.4	13.5	13.6	13.7	13.5
Social Sciences	3.5	4.6	5.1	5.9	5.5	6.0	6.5	7.0	6.7	6.7	7.8	6.4	6.0	5.7
Interdisciplinary Studies	0.4	0.4	0.5	0.8	0.8	0.8	0.8	1.5	1.3	1.1	1.1	1.4	1.0	0.6
Total, All Programs	100.0	100.0	100.0	100.0	100.0	100.0	100.0	100.0	100.0	100.0	100.0	100.0	100.0	100.0

(Other Latino)

Discipline Division	1987	1988	1989	1990	1991	1992	1993	1994	1995	1996	1997	1998	1999	2000
Undeclared	2.5	1.9	1.5	1.7	1.1	0.9	0.1	0.0	0.2	0.0	0.3	0.4	0.5	0.6
Agriculture	0.7	0.6	0.5	0.9	0.8	0.3	0.2	0.1	0.5	0.5	0.5	0.5	0.4	0.5
Architecture	0.6	1.2	1.1	0.7	0.7	0.8	0.6	0.5	1.1	1.0	0.4	0.4	0.4	0.5
Area Studies	0.7	0.8	0.5	0.2	0.2	0.2	0.4	0.7	1.1	1.1	0.9	0.9	0.9	0.9
Biological Sciences	1.4	1.9	2.2	1.4	1.2	1.8	1.9	2.3	2.0	1.7	2.0	2.1	1.7	2.0
Business and Management	12.3	11.9	14.0	13.8	12.9	11.5	9.5	7.6	7.6	7.4	8.0	6.9	6.8	6.1
Communications	0.8	0.8	0.9	0.6	0.8	1.3	1.5	0.9	0.8	0.9	0.8	0.7	0.8	0.8
Computer and Information Sciences	2.1	2.4	1.2	2.0	1.4	1.3	1.3	1.7	1.9	2.1	1.5	1.6	2.2	1.1
Education	29.2	26.9	26.1	23.0	23.0	23.5	27.5	27.4	27.4	29.1	32.8	34.3	35.9	38.3
Engineering	8.2	7.9	8.5	7.8	7.9	8.0	7.7	6.4	5.7	5.1	4.7	4.0	4.3	3.2
Fine and Applied Arts	3.5	2.9	2.8	2.2	2.3	2.9	2.7	2.6	2.6	2.5	2.6	2.8	2.4	2.0
Foreign Languages	5.2	4.7	4.5	4.2	5.3	4.9	4.7	5.2	4.6	5.7	4.8	3.9	4.0	4.6
Health Professions	7.5	7.5	6.1	7.3	8.3	7.7	8.7	8.2	8.3	7.7	7.0	7.7	7.6	8.2
Home Economics	0.6	0.5	0.4	0.6	1.8	2.2	2.0	2.0	1.8	1.5	1.3	1.4	1.6	1.8
Letters	2.5	3.8	4.1	5.7	5.4	6.2	4.6	5.7	6.0	6.8	6.1	6.2	5.8	4.8
Library Science	0.3	0.3	0.6	1.1	0.7	0.2	0.5	0.7	0.5	0.1	0.4	0.6	0.4	0.3
Mathematics	1.0	1.0	1.6	1.6	1.0	1.7	1.3	1.4	1.4	1.3	1.8	1.7	1.2	1.3
Physical Sciences	2.0	1.8	1.9	1.7	1.9	1.3	1.4	1.7	1.6	1.9	1.6	1.0	1.0	0.8
Psychology	4.1	4.5	4.5	4.0	4.9	4.5	4.5	5.0	4.6	4.4	3.6	4.5	3.9	3.4
Public Affairs	10.5	12.4	11.5	12.0	10.9	12.1	12.1	12.7	11.8	11.2	10.9	9.9	10.5	11.2
Social Sciences	3.9	3.3	4.2	5.9	6.8	5.2	5.7	5.5	6.4	5.9	6.2	6.5	6.0	5.9
Interdisciplinary Studies	0.6	0.9	1.4	1.2	0.8	1.3	1.2	1.8	2.1	2.1	1.8	2.0	1.5	1.7
Total, All Programs	100.0	100.0	100.0	100.0	100.0	100.0	100.0	100.0	100.0	100.0	100.0	100.0	100.0	100.0

Note: Degree program enrollment differs from enrollment by student level.
To maintain continuity with other tables in this section, the above percentages exclude enrollment in International Programs.

Table 88 (continued)

CSU Fall Systemwide Enrollment in Master's Programs,
Percent by Discipline Division and Ethnicity, from Fall 1987

Discipline Division	(Pacific Islander)													
	1987	1988	1989	1990	1991	1992	1993	1994	1995	1996	1997	1998	1999	2000
Undeclared	3.5	4.8	6.5	2.5	1.4	0.0	0.0	0.0	0.9	0.0	0.0	0.0	0.8	1.7
Agriculture	1.2	0.0	0.0	0.0	0.0	0.0	0.0	0.0	0.9	0.9	1.0	0.0	0.0	0.0
Architecture	0.0	0.0	0.0	1.3	1.4	2.1	1.0	1.9	0.9	0.9	2.0	0.9	0.8	0.9
Area Studies	1.2	1.2	1.1	0.0	0.0	0.0	0.0	0.9	0.9	0.0	0.0	0.0	0.0	0.0
Biological Sciences	3.5	3.6	1.1	2.5	1.4	4.1	4.0	6.5	3.7	4.0	2.8	2.4	2.6	
Business and Management	15.3	13.3	9.8	7.6	8.2	13.4	16.2	14.8	5.6	13.1	14.1	13.9	11.3	8.6
Communications	0.0	1.1	1.3	2.7	3.1	4.0	2.8	0.9	2.8	2.0	0.9	0.8	0.0	
Computer and Information Sciences	2.4	2.4	2.2	1.3	4.1	2.1	2.0	3.7	3.7	3.7	3.0	4.6	4.0	2.6
Education	23.5	20.5	25.0	25.3	20.5	20.6	22.2	21.3	22.4	29.0	24.2	17.6	27.4	27.6
Engineering	15.3	13.3	10.9	11.4	11.0	8.2	8.1	9.3	7.5	2.8	6.1	8.3	7.3	6.0
Fine and Applied Arts	3.5	2.4	3.3	2.5	5.5	3.1	3.0	0.9	0.0	0.0	0.0	0.0	1.6	1.7
Foreign Languages	0.0	0.0	0.0	1.3	1.4	0.0	2.0	0.0	0.0	0.0	0.0	0.9	0.0	0.0
Health Professions	10.6	7.2	12.0	10.1	1.4	4.1	4.0	7.4	11.2	7.5	12.1	6.5	8.1	9.5
Home Economics	0.0	4.8	2.2	1.3	2.7	2.1	4.0	1.9	1.9	1.9	3.0	2.8	0.0	0.0
Letters	2.4	2.4	5.4	6.3	4.1	5.2	2.0	5.6	7.5	6.5	6.1	6.5	7.3	9.5
Library Science	1.2	1.2	0.0	0.0	0.0	0.0	0.0	0.0	0.0	0.0	0.0	0.0	0.0	0.9
Mathematics	1.2	0.0	1.1	0.0	0.0	2.1	1.0	1.9	1.9	1.9	1.0	2.8	2.4	0.9
Physical Sciences	2.4	1.2	2.2	1.3	1.4	0.0	0.0	0.0	0.9	0.9	0.0	2.8	2.4	3.4
Psychology	4.7	6.0	3.3	1.3	5.5	6.2	5.1	4.6	5.6	3.7	2.0	1.9	0.8	2.6
Public Affairs	8.2	12.0	7.6	15.2	19.2	14.4	13.1	12.0	14.0	13.1	13.1	17.6	12.1	12.1
Social Sciences	0.0	2.4	4.3	7.6	5.5	6.2	6.1	3.7	7.5	6.5	4.0	8.3	9.7	8.6
Interdisciplinary Studies	0.0	1.2	1.1	0.0	2.7	3.1	2.0	0.9	1.9	0.9	2.0	0.9	0.8	0.9
Total, All Programs	100.0	100.0	100.0	100.0	100.0	100.0	100.0	100.0	100.0	100.0	100.0	100.0	100.0	100.0

Discipline Division	(White Non-Latino)													
	1987	1988	1989	1990	1991	1992	1993	1994	1995	1996	1997	1998	1999	2000
Undeclared	2.1	2.5	2.4	2.1	0.9	0.8	0.1	0.0	0.2	0.0	0.1	0.1		0.2
Agriculture	0.7	0.7	0.7	0.7	0.6	0.7	0.7	0.7	0.8	0.7	0.7	0.8	0.9	0.9
Architecture	0.8	0.9	0.8	0.8	0.7	0.8	0.7	0.8	1.0	0.9	0.8	0.8	0.7	0.7
Area Studies	0.2	0.2	0.2	0.2	0.2	0.3	0.3	0.3	0.3	0.3	0.3	0.2	0.2	0.2
Biological Sciences	2.2	2.0	2.0	2.0	1.9	2.1	2.3	2.4	2.4	2.6	2.5	2.4	2.3	2.2
Business and Management	17.0	16.1	15.9	16.0	15.3	14.6	13.4	12.2	11.5	11.5	11.8	11.6	11.2	10.0
Communications	1.2	1.1	1.0	1.1	1.1	1.1	1.1	1.1	1.0	1.1	1.1	1.1	1.1	1.1
Computer and Information Sciences	2.4	2.2	1.6	1.9	2.2	2.3	2.4	2.1	2.1	2.0	2.0	2.0	2.0	1.8
Education	27.4	27.4	27.2	26.3	25.5	25.5	24.6	25.1	26.4	26.7	28.3	29.4	32.0	34.4
Engineering	4.8	5.1	5.2	5.2	5.2	5.2	5.1	4.7	4.5	4.2	3.8	3.3	3.2	2.7
Fine and Applied Arts	3.9	3.8	3.9	3.8	3.8	3.7	3.8	3.6	3.6	3.8	3.6	3.7	3.5	3.6
Foreign Languages	0.6	0.6	0.6	0.6	0.6	0.6	0.5	0.6	0.5	0.5	0.6	0.5	0.4	0.5
Health Professions	6.9	7.0	7.2	7.2	7.6	7.7	8.7	9.4	9.4	9.4	9.4	10.9	10.1	9.8
Home Economics	1.1	1.0	0.8	0.9	1.8	1.8	2.0	2.1	2.2	2.0	1.9	1.7	1.7	1.6
Letters	6.4	6.5	7.1	7.7	8.4	8.5	8.8	9.2	9.4	9.2	8.7	7.9	7.7	7.5
Library Science	0.7	0.8	0.8	0.7	0.9	0.9	1.0	1.0	0.8	0.7	0.8	1.0	1.0	1.2
Mathematics	1.2	1.2	1.2	1.2	1.1	1.2	1.1	1.2	1.3	1.2	1.2	1.2	1.2	1.2
Physical Sciences	1.8	1.9	1.8	1.4	1.5	1.4	1.5	1.6	1.5	1.5	1.4	1.3	1.3	1.2
Psychology	4.1	4.2	4.2	4.1	4.2	4.0	4.3	4.4	3.9	4.0	3.9	3.7	3.2	3.3
Public Affairs	8.9	8.8	8.4	8.7	8.5	8.6	8.9	8.7	8.3	8.9	7.8	8.0	7.9	7.8
Social Sciences	4.5	4.9	5.4	5.8	6.1	6.2	6.4	6.4	6.4	6.4	7.0	5.9	5.9	5.8
Interdisciplinary Studies	1.3	1.5	1.5	1.6	1.8	2.1	2.3	2.4	2.5	2.5	2.5	2.5	2.3	2.3
Total, All Programs	100.0	100.0	100.0	100.0	100.0	100.0	100.0	100.0	100.0	100.0	100.0	100.0	100.0	100.0

Note: Degree program enrollment differs from enrollment by student level.
To maintain continuity with other tables in this section, the above percentages exclude enrollment in International Programs.

Table 88 (continued)

CSU Fall Systemwide Enrollment in Master's Programs,
Percent by Discipline Division and Ethnicity, from Fall 1987

Discipline Division	(Total, All Groups)													
	1987	1988	1989	1990	1991	1992	1993	1994	1995	1996	1997	1998	1999	2000
Undeclared	2.3	2.4	2.8	2.1	0.9	0.8	0.1	0.0	0.2	0.0	0.1	0.2	0.2	0.3
Agriculture	0.6	0.6	0.6	0.7	0.7	0.6	0.6	0.6	0.6	0.6	0.6	0.6	0.6	0.6
Architecture	0.8	0.9	0.8	0.8	0.7	0.8	0.7	0.8	0.9	0.9	0.8	0.7	0.7	0.6
Area Studies	0.2	0.2	0.2	0.2	0.2	0.3	0.3	0.4	0.3	0.4	0.4	0.3	0.3	0.3
Biological Sciences	2.0	1.9	2.0	2.0	1.8	2.0	2.2	2.4	2.4	2.4	2.3	2.2	2.1	2.0
Business and Management	17.2	16.6	16.2	16.9	16.2	15.6	14.4	13.6	13.0	13.4	14.0	13.2	12.9	11.9
Communications	1.2	1.1	1.0	1.1	1.1	1.1	1.1	1.1	1.0	1.2	1.2	1.2	1.1	1.1
Computer and Information Sciences	3.7	3.3	2.2	2.9	3.5	3.5	3.5	3.3	3.3	3.1	3.4	4.0	4.5	4.8
Education	25.1	24.8	24.7	23.4	22.7	23.0	22.4	22.7	24.2	24.7	26.1	27.1	28.9	30.8
Engineering	7.2	7.5	8.0	7.8	7.9	8.0	7.8	7.3	6.8	6.5	6.1	5.7	5.7	5.4
Fine and Applied Arts	3.8	3.7	3.7	3.6	3.6	3.5	3.5	3.5	3.5	3.5	3.4	3.3	3.2	3.1
Foreign Languages	0.7	0.7	0.8	0.8	0.9	0.8	0.8	0.9	0.9	1.0	0.9	1.0	0.9	1.0
Health Professions	6.3	6.4	6.6	6.7	7.0	6.8	7.8	8.2	8.3	8.2	8.0	9.1	8.8	8.5
Home Economics	1.0	0.9	0.8	0.9	1.6	1.6	1.8	1.8	1.9	1.8	1.7	1.5	1.5	1.4
Letters	5.7	6.0	6.7	7.1	7.7	7.8	8.0	8.2	8.3	8.0	7.5	7.2	6.8	6.4
Library Science	0.6	0.7	0.7	0.6	0.8	0.8	0.8	0.8	0.7	0.6	0.7	0.8	0.8	0.9
Mathematics	1.4	1.3	1.3	1.3	1.2	1.3	1.2	1.3	1.3	1.3	1.2	1.2	1.2	1.2
Physical Sciences	2.1	2.2	2.1	1.7	1.7	1.6	1.8	1.9	1.8	1.7	1.6	1.4	1.4	1.3
Psychology	3.7	3.9	3.9	3.7	3.7	3.5	3.8	3.9	3.6	3.6	3.3	3.1	2.8	2.8
Public Affairs	8.8	8.7	8.5	8.9	8.8	8.9	9.3	9.1	8.8	9.0	8.1	8.4	8.4	8.3
Social Sciences	4.5	4.8	5.2	5.6	5.8	5.9	6.3	6.3	6.3	6.1	6.5	5.7	5.5	5.3
Interdisciplinary Studies	1.1	1.3	1.3	1.4	1.6	1.8	1.9	2.1	2.1	2.1	2.1	2.1	1.9	1.8
Total, All Programs	100.0	100.0	100.0	100.0	100.0	100.0	100.0	100.0	100.0	100.0	100.0	100.0	100.0	100.0

Note: Degree program enrollment differs from enrollment by student level.
To maintain continuity with other tables in this section, the above percentages exclude enrollment in International Programs.

This page intentionally left blank.