

New Students

Section III



Introduction

During the past 15 years, more than one-third of the California State University's college year total enrollment consisted of new students. Students were recruited from several sources in the educational pipeline. Roughly one-fourth of all new students have been first-time freshmen who recently graduated from California high schools. Most of these new freshmen, 96 percent, matriculated in the fall term. Around one-half of all new students were undergraduate transfers from other California colleges or universities. California community colleges sent the vast majority of undergraduate transfers. A relatively small number of transfer students came from the University of California. Unlike first-time freshmen, a significant proportion of the transfer population matriculated in the spring term, averaging about 30 percent. The final quarter of the new student population consisted of new postbaccalaureate and graduate students, of which approximately one-half were former CSU undergraduates. Although most began their CSU enrollment in the fall term, it has been quite typical for significant proportions of these students to matriculate in spring. Tables in this section describe in detail the size and origins of the new student population. Unless otherwise specified, the CSU Statewide Nursing Program, Summer Arts, International Programs, and CalStateTEACH are not included in the enrollment data. As of fall 1998, however, the CSU Statewide Nursing Program is included in the enrollment for Dominguez Hills.

New Student Enrollment Comparison

Comparing new student enrollment between the CSU and the University of California (UC) is helpful in appreciating statewide differences and similarities. For instance, 50 percent of all new undergraduates entered the CSU as transfers. The opposite was true at the UC, where approximately 70 percent entered as first-time freshmen.

New Student Enrollment History

The three foremost new student populations have different enrollment histories. From fall 1970 to fall 1988, the number of first-time freshmen entering the CSU during the college year consistently increased at an annual average rate of 2.5 percent (from 21,954 to 33,958). For the same period, college year undergraduate transfers fluctuated. From college year 1970-1971 to college year 1975-1976, transfer enrollment increased by nearly 20 percent (from 61,011 to 72,625), but from 1975-1976 to 1988-1989, attendance declined by approximately the same amount (17 percent).

The number of new postbaccalaureates and graduates entering the CSU has also fluctuated, but the changes have been small. Between fall 1977 and fall 1989, the annual number changed from 21,651 to 20,105 students.

From 1989-1990 until recently, campuses adjusted access due to budget constraints. The net effect was an overall drop in new entrants, especially among first-time freshmen and lower division undergraduate transfers until fall 1993. Between fall 1989 and fall 1993, new first-time freshmen dropped by a total of 9,977 students, and lower division transfers declined by 3,517 students. This enrollment trend was reversed in fall 1994 when new undergraduate enrollment increased for both first-time freshmen and transfers. According to the fall 2000 profile, the number of first-time freshmen enrolling in the CSU grew by 5 percent from the previous fall, increasing from 35,273 to 37,071 students. At the same time, the fall 2000 profile shows a decline of about 2 percent in undergraduate transfer enrollment (from 36,479 down to 35,568). Between fall 1990 and fall 1994, new students who were attending the CSU at a postbaccalaureate level fell by nearly 25 percent, almost certainly a casualty of enrollment management practices at CSU campuses grappling with budgetary constraints and limited enrollment slots. Since 1995, enrollment of new postbaccalaureates and graduates has increased. The fall 2000 profile enrollment of 22,281 was up from the previous year and exceeded the level of 1990 by about 4 percent.

Distribution of Undergraduate Transfers

The distribution of undergraduate transfer students by student level has fluctuated since fall 1970. During that term almost 75 percent of all transfers were juniors. In contrast, junior transfers represented a low of 57 percent of CSU undergraduate transfers in fall 1990 and have since risen to 77 percent in fall 2000. Sophomore representation among all undergraduate transfers has also varied during this time. In fall 1970, about 16 percent of all undergraduate transfers consisted of sophomore transfers, increasing to a high of 26 percent in fall 1990. By comparison, just 9 percent of undergraduate transfers in fall 2000 were sophomores. Enrollment management strategies since fall 1990 have had an impact on lower division undergraduate enrollment, considerably slowing the pace at which this type of student matriculates at the CSU.

Figure 7
Comparison of White and Nonwhite CSU First-Time Freshman Enrollment from California Public High Schools, Fall 1984 to Fall 2000

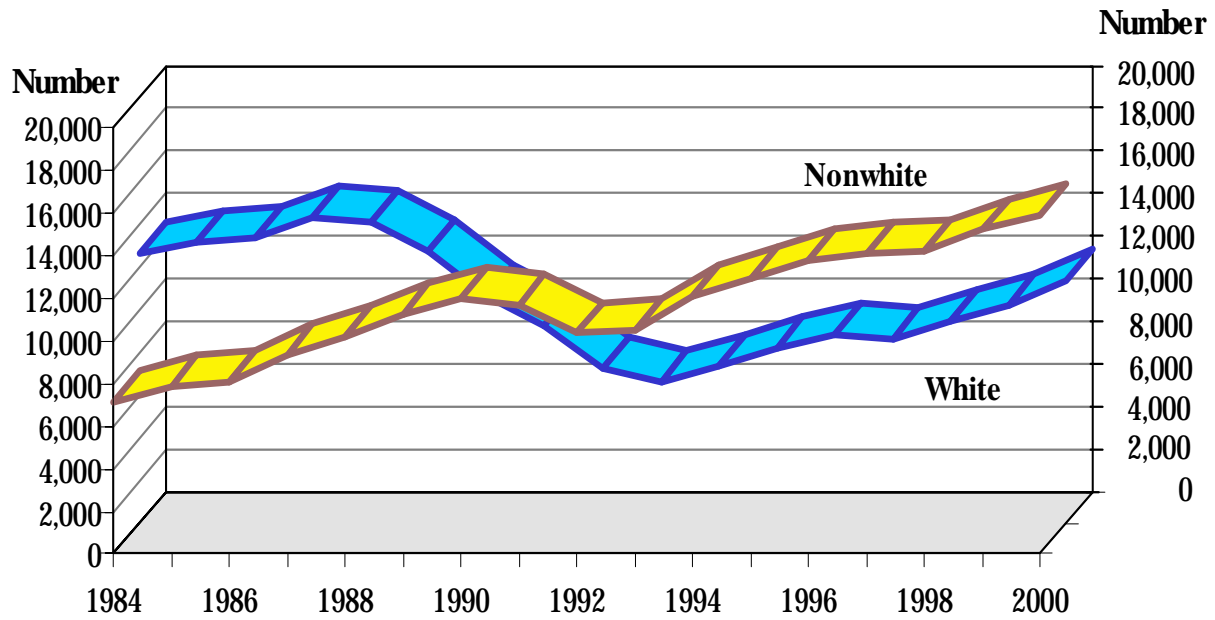


Figure 8
Percent of CSU Undergraduate Transfers by Student Level, Fall 1970 to Fall 2000

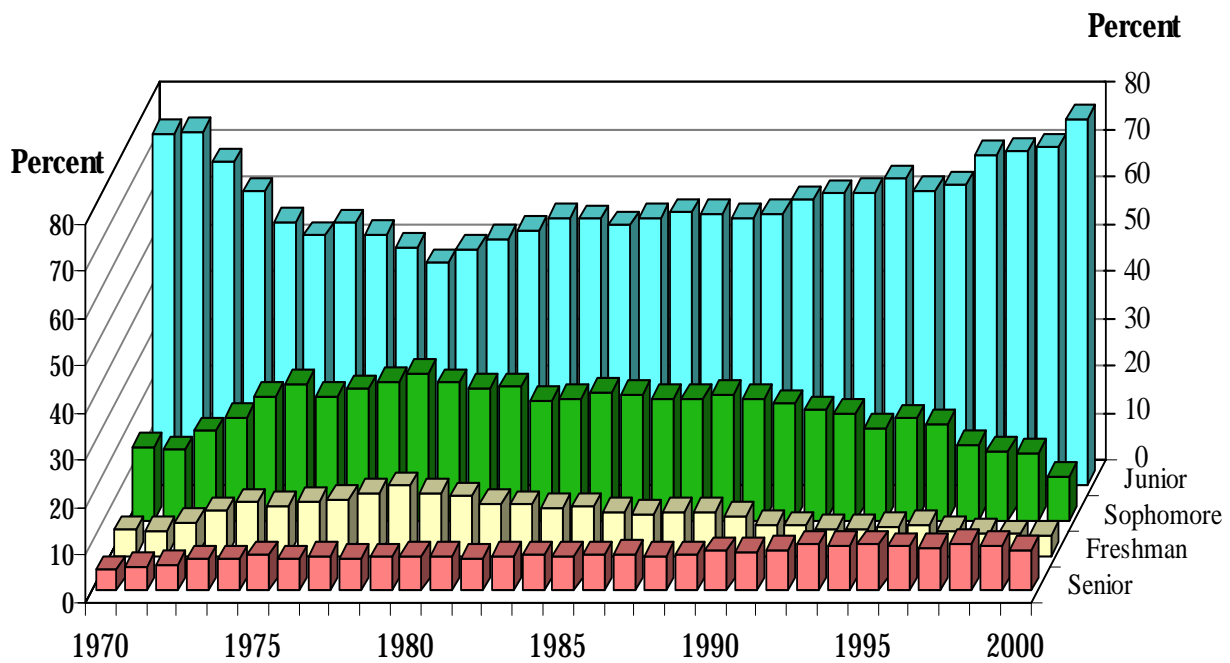


Table 55

Comparison of Undergraduate New Student Enrollment in the University of California and the California State University, Fall 1980 to Fall 2000

Fall	University of California					California State University				
	All New Students	New Transfer Students	First-Time Freshmen	Percent Transfers	Percent First-Time Freshmen	All New Students	New Transfer Students	First-Time Freshmen	Percent Transfers	Percent First-Time Freshmen
1980	29,073	10,022	19,051	34.5	65.5	69,712	42,612	27,100	61.1	38.9
1981	28,036	8,836	19,200	31.6	68.4	67,033	41,151	25,882	61.4	38.6
1982	28,287	8,826	19,461	31.2	68.8	65,788	39,784	26,004	60.5	39.5
1983	29,502	9,195	20,307	31.2	68.8	65,794	40,352	25,442	61.3	38.7
1984	29,778	8,421	21,357	28.3	71.7	65,298	40,116	25,182	61.4	38.6
1985	29,554	8,018	21,356	27.7	72.3	67,441	39,953	27,488	59.2	40.8
1986	29,882	7,645	22,237	25.6	74.4	65,402	37,628	27,774	57.5	42.5
1987	31,290	8,407	22,883	26.9	73.1	67,757	37,349	30,408	55.1	44.9
1988	31,782	8,293	23,489	26.1	73.9	70,787	38,775	32,012	54.8	45.2
1989	30,496	8,253	22,243	27.1	72.9	68,304	36,791	31,513	53.9	46.1
1990	30,634	9,425	21,209	30.8	69.2	67,230	37,647	29,583	54.0	44.0
1991	29,232	9,084	20,148	31.1	68.9	62,653	35,543	27,110	56.7	43.3
1992	30,783	11,522	19,337	37.3	62.7	57,382	34,588	22,794	60.3	39.7
1993	30,631	10,218	20,413	32.3	69.9	57,780	35,745	22,035	61.9	38.1
1994	32,034	10,436	21,598	32.6	67.4	64,998	39,936	25,062	61.9	38.6
1995	33,156	10,608	22,548	32.0	68.0	66,625	39,114	27,511	58.7	41.3
1996	33,895	10,372	23,523	30.6	69.4	69,904	39,821	30,083	57.0	43.0
1997	34,956	9,969	24,987	28.5	71.5	67,333	36,673	30,660	54.5	45.5
1998	35,887	9,572	26,315	26.7	73.3	66,957	34,848	32,109	52.0	48.0
1999	37,440	9,949	27,491	26.6	73.4	71,752	36,479	35,273	50.8	49.2
2000	39,159	10,599	28,560	27.1	72.9	72,639	35,568	37,071	49.0	51.0

Sources: CSU Analytic Studies, Enrollment Reporting System, Student.
University of California, Office of the President, Corporate Student System.

Table 56

Comparison of Transfer Enrollment in the California State University and the University of California, and the Ratio of California Community College Transfers to Total New Undergraduate Transfers, Fall 1980 to Fall 2000

Fall	University of California			California State University		
	Total Number of New Transfer Students	CCC Transfers	Ratio	Total Number of New Transfer Students	CCC Transfers	Ratio
1980	10,022	5,378	.537	42,612	30,527	.716
1981	8,836	4,844	.548	41,151	30,072	.731
1982	8,826	5,136	.582	39,784	29,824	.750
1983	9,195	5,305	.577	40,352	30,274	.750
1984	8,421	5,257	.624	40,116	30,134	.751
1985	8,018	4,931	.615	39,953	29,682	.743
1986	7,645	4,858	.635	37,628	27,761	.738
1987	8,407	5,465	.650	37,349	28,257	.757
1988	8,293	5,855	.706	38,775	29,393	.758
1989	8,253	6,224	.754	36,791	28,331	.770
1990	9,425	7,420	.787	37,647	29,370	.780
1991	9,084	7,461	.821	35,543	28,557	.803
1992	11,522	8,243	.715	34,588	28,375	.820
1993	10,218	8,857	.867	35,745	29,564	.827
1994	10,436	8,997	.862	39,936	30,419	.778
1995	10,608	9,020	.850	39,114	31,885	.815
1996	10,372	8,796	.848	39,821	32,383	.813
1997	9,969	8,001	.803	36,673	29,973	.817
1998	9,572	8,339	.871	34,848	28,842	.828
1999	9,949	8,704	.875	36,479	30,469	.835
2000	10,599	9,188	.867	35,568	30,184	.849

Sources: CSU Analytic Studies, Enrollment Reporting System, Student.
University of California, Office of the President, Corporate Student System.

Table 57

**First-Time Freshmen by Term for the 2000-2001 College Year
(By Campus)**

Campus	Summer	Fall*	Winter	Spring	Total
Bakersfield	1	563	32	10	606
Chico	0	1,981	0	52	2,033
Dominguez Hills**	0	528	0	30	558
Fresno	0	1,941	0	66	2,007
Fullerton	0	2,772	0	89	2,861
Hayward	8	710	31	12	761
Humboldt	5	779	0	31	815
Long Beach	0	3,368	0	116	3,484
Los Angeles	16	1,237	45	17	1,315
Maritime Academy	0	99	0	0	99
Monterey Bay	0	445	0	15	460
Northridge	0	2,842	0	206	3,048
Pomona	17	2,769	59	29	2,874
Sacramento	0	2,159	0	82	2,241
San Bernardino	0	1,198	59	31	1,288
San Diego	160	3,650	0	132	3,942
San Francisco	0	2,042	0	121	2,163
San Jose	0	2,583	0	84	2,667
San Luis Obispo	214	3,111	6	3	3,334
San Marcos	0	576	0	21	597
Sonoma	0	1,093	0	24	1,117
Stanislaus	0	625	4	13	642
Campus Total	421	37,071	236	1,184	38,912

(Systemwide, from 1960-1961 College Year)

College Year	Summer	Fall*	Winter	Spring	Total
1960-61	0	13,738	85	1,518	15,341
1961-62	0	14,933	98	1,425	16,456
1962-63	0	16,431	79	1,570	18,080
1963-64	0	16,779	82	1,467	18,328
1964-65	0	20,521	123	1,151	21,795
1965-66	189	14,708	87	1,104	16,088
1966-67	124	16,439	137	1,214	17,914
1967-68	146	16,882	134	1,318	18,480
1968-69	148	19,856	357	699	21,060
1969-70	224	18,322	170	1,449	20,165
1970-71	568	19,635	275	1,476	21,954
1971-72	1,235	19,859	316	1,584	22,994
1972-73	468	22,985	355	1,509	25,317
1973-74	262	23,173	383	1,747	25,565
1974-75	266	24,116	428	1,799	26,609
1975-76	268	24,448	520	1,807	27,043
1976-77	294	24,700	466	1,675	27,135
1977-78	342	25,281	406	1,554	27,583
1978-79	472	26,112	412	1,659	28,655
1979-80	495	27,403	560	1,826	30,284
1980-81	415	27,100	405	1,654	29,574
1981-82	426	25,882	384	1,376	28,068
1982-83	180	26,004	354	1,248	27,786
1983-84	258	25,443	312	1,308	27,321
1984-85	216	25,182	338	1,118	26,854
1985-86	326	27,488	390	1,241	29,445
1986-87	389	27,774	313	1,360	29,836
1987-88	434	30,408	359	1,340	32,541
1988-89	424	32,012	376	1,146	33,958
1989-90	504	31,513	410	1,156	33,583
1990-91	497	29,583	336	1,047	31,463
1991-92	330	27,110	174	637	28,251
1992-93	257	22,794	124	387	23,562
1993-94	220	22,035	176	682	23,113
1994-95	204	25,062	190	831	26,287
1995-96	222	27,511	164	857	28,754
1996-97	258	30,083	167	751	31,259
1997-98	216	30,660	178	799	31,853
1998-99	297	32,109	215	925	33,546
1999-00	244	35,273	217	954	36,688
2000-01	421	37,071	236	1,184	38,912

Note: Table does not include Summer Arts, Statewide Nursing, International Programs, or CalStateTEACH.

*Fall 2000 figures reflect final fall data used in college year reporting.

**Beginning fall 1998, Statewide Nursing is included in the enrollment for Dominguez Hills.

Table 58

Percent Distribution of First-Time Freshmen by Term

College Year	Summer	Fall*	Winter	Spring
1965-66	1.2	91.4	0.5	6.9
1970-71	2.6	89.4	1.2	6.7
1975-76	1.0	90.4	1.9	6.7
1976-77	1.1	91.0	1.7	6.2
1977-78	1.2	91.7	1.5	5.6
1978-79	1.6	91.1	1.4	5.8
1979-80	1.6	90.5	1.8	6.0
1980-81	1.4	91.6	1.4	5.6
1981-82	1.5	92.2	1.4	4.9
1982-83	0.6	93.6	1.3	4.5
1983-84	0.9	93.1	1.1	4.8
1984-85	0.8	93.8	1.3	4.2
1985-86	1.1	93.4	1.3	4.2
1986-87	1.3	93.1	1.0	4.6
1987-88	1.3	93.4	1.1	4.1
1988-89	1.2	94.3	1.1	3.4
1989-90	1.5	93.8	1.2	3.4
1990-91	1.6	94.0	1.1	3.3
1991-92	1.2	96.0	0.6	2.3
1992-93	1.1	96.7	0.5	1.6
1993-94	1.0	95.3	0.8	3.0
1994-95	0.8	95.3	0.7	3.2
1995-96	0.8	95.7	0.6	3.0
1996-97	0.8	96.2	0.5	2.4
1997-98	0.7	96.3	0.6	2.5
1998-99	0.9	95.7	0.6	2.8
1999-00	0.7	96.1	0.6	2.6
2000-01	1.1	95.3	0.6	3.0

*Fall 2000 figures reflect final fall data used in college year reporting.

Table 59

Enrollment, Percent Distribution, and Index of Growth by Enrollment Status from Fall 1960

Fall	First-Time Freshmen	Lower Division Transfers	Upper Division Transfers	New Postbaccalaureate/ Graduate Students	Total New Students	Continuing and Returning	Total* Enrollment
Number							
1960	13,738	6,457	9,087	9,446	38,728	56,353	95,081
1965	14,708	6,155	14,587	11,115	46,565	108,362	154,927
1970	19,635	7,343	27,479	15,451	69,908	171,651	241,559
1975	24,448	18,886	28,831	21,694	93,859	217,032	310,891
1976	24,700	16,419	27,073	21,070	89,262	214,472	303,734
1977	25,281	18,271	27,696	21,651	92,899	219,481	312,380
1978	26,112	18,601	25,122	19,652	89,487	216,688	306,175
1979	27,403	19,768	23,342	19,836	90,259	216,542	306,801
1980	27,100	18,111	24,501	19,755	89,467	224,383	313,850
1981	25,882	16,754	24,397	19,262	86,295	233,270	319,565
1982	26,004	15,591	24,193	18,146	83,934	231,880	315,814
1983	25,443	14,605	25,747	16,735	82,530	231,370	313,900
1984	25,182	14,438	25,678	17,143	82,441	233,564	316,005
1985	27,488	14,983	24,970	18,692	86,133	238,493	324,626
1986	27,774	13,342	23,926	20,210	85,252	248,172	333,424
1987	30,408	12,886	24,463	19,894	87,651	255,125	342,776
1988	32,012	13,627	25,148	19,646	90,433	264,673	355,106
1989	31,513	13,138	23,653	20,105	88,409	272,429	360,838
1990	29,583	12,826	24,821	21,446	88,676	277,454	369,053
1991	27,110	11,152	24,391	19,949	82,602	276,559	361,904
1992	22,794	10,271	24,317	18,156	75,538	269,186	347,693
1993	22,035	10,110	25,635	16,907	74,687	247,515	325,639
1994	25,062	9,393	27,543	16,623	78,621	236,740	319,368
1995	27,511	10,834	28,280	17,821	84,446	236,918	325,604
1996	30,083	10,812	29,009	19,628	89,532	242,834	336,803
1997	30,660	7,742	28,931	20,561	87,894	250,862	343,779
1998	32,109	6,763	28,085	21,198	88,155	256,316	349,804
1999	35,273	6,861	29,618	22,230	93,982	259,710	358,947
2000	37,071	4,928	30,640	22,281	94,920	266,312	367,363
Percent							
1960	14.4	6.8	9.6	9.9	40.7	59.3	100.0
1965	9.5	4.0	9.4	7.2	30.1	69.9	100.0
1970	8.1	3.0	11.4	6.4	28.9	71.1	100.0
1975	7.9	6.1	9.3	7.0	30.2	69.8	100.0
1976	8.1	5.4	8.9	6.9	29.4	70.6	100.0
1977	8.1	5.8	8.9	6.9	29.7	70.3	100.0
1978	8.5	6.1	8.2	6.4	29.2	70.8	100.0
1979	8.9	6.4	7.6	6.5	29.4	70.6	100.0
1980	8.6	5.8	7.8	6.3	28.5	71.5	100.0
1981	8.1	5.2	7.6	6.0	27.0	73.0	100.0
1982	8.2	4.9	7.7	5.7	26.6	73.4	100.0
1983	8.1	4.7	8.2	5.3	26.3	73.7	100.0
1984	8.0	4.6	8.1	5.4	26.1	73.9	100.0
1985	8.5	4.6	7.7	5.8	26.5	73.4	100.0
1986	8.3	4.0	7.2	6.1	25.6	74.4	100.0
1987	8.9	3.8	7.1	5.8	25.6	74.4	100.0
1988	9.0	3.8	7.1	5.5	25.5	74.5	100.0
1989	8.7	3.6	6.6	5.6	24.5	75.5	100.0
1990	8.0	3.5	6.7	5.8	24.0	75.2	100.0
1991	7.5	3.1	6.7	5.5	22.8	76.4	100.0
1992	6.6	3.0	7.0	5.2	21.7	77.4	100.0
1993	6.8	3.1	7.9	5.2	22.9	76.0	100.0
1994	7.8	2.9	8.6	5.2	24.6	74.1	100.0
1995	8.4	3.3	8.7	5.5	25.9	72.8	100.0
1996	8.9	3.2	8.6	5.8	26.6	72.1	100.0
1997	8.9	2.3	8.4	6.0	25.6	73.0	100.0
1998	9.2	1.9	8.0	6.1	25.2	73.3	100.0
1999	9.8	1.9	8.3	6.2	26.2	72.4	100.0
2000	10.1	1.3	8.3	6.1	25.8	72.5	100.0

*Total enrollment includes transitory enrollment.

Table 59 (continued)

Enrollment, Percent Distribution, and Index of Growth by Enrollment Status from Fall 1960

Fall	First-Time Freshmen	Lower Division Transfers	Upper Division Transfers	New Postbaccalaureate/ Graduate Students	Total New Students	Continuing and Returning	Total* Enrollment
Index							
1960	100	100	100	100	100	100	100
1965	107	95	161	118	120	192	163
1970	143	114	302	164	181	305	254
1975	178	292	317	230	242	385	327
1976	180	254	298	223	230	381	319
1977	184	283	305	229	240	389	329
1978	190	288	276	208	231	385	322
1979	199	306	257	210	233	384	361
1980	197	281	270	209	231	398	330
1981	188	259	268	204	223	414	336
1982	189	241	266	192	217	411	332
1983	185	226	283	177	213	411	327
1984	183	224	283	181	213	414	332
1985	200	232	275	198	222	423	341
1986	202	207	263	214	220	440	351
1987	221	200	269	211	239	453	361
1988	233	211	277	208	234	469	373
1989	229	203	260	213	228	483	380
1990	215	199	273	227	229	492	388
1991	197	173	268	211	213	491	381
1992	166	159	268	192	195	478	366
1993	160	157	282	179	193	439	342
1994	182	145	303	176	203	420	336
1995	200	168	311	189	218	420	342
1996	219	167	319	208	231	431	354
1997	223	120	318	218	227	445	362
1998	234	105	309	224	228	455	368
1999	257	106	326	235	243	461	378
2000	270	76	337	236	245	473	386

*Total enrollment includes transitory enrollment.

Table 60

California High School Graduates and CSU First-Time Freshmen from California High Schools by Admission Category, Fall 1993 to Fall 2000

Enrollment Category	1993	1994	1995	1996	1997	1998	1999	2000
High School Graduates*	249,320	253,083	255,200	259,071	269,071	282,897	299,221	309,866
CSU Fall Regular Admits	17,517	20,016	21,688	24,485	25,554	27,285	29,990	32,474
Percent of Total HS Grads	7.0	7.9	8.5	9.5	9.5	9.6	10.0	10.5
CSU Special Admits	3,800	4,287	4,812	4,521	3,928	3,514	3,097	2,915
Percent of Total HS Grads	1.5	1.7	1.9	1.7	1.5	1.2	1.0	0.9
CSU Alternative Admits**	61	52	78	56	48	47	766	131
Percent of Total HS Grads	0.0	0.0	0.0	0.0	0.0	0.0	0.3	0.0
Total CSU FTF Admits from CA High Schools	21,378	24,355	26,578	29,062	29,530	30,846	33,853	35,520
Percent of Total HS Grads	8.6	9.6	10.4	11.2	11.0	10.9	11.3	11.5

*Source: California Department of Education, California Basic Educational Data System (CBEDS)

**Alternative Admits for fall 1999 and fall 2000 reflect a coding change.

Table 61

First-Time Freshmen from California Public and Private High Schools by Ethnic Group and Admission Category, Fall 2000 Profile All Campuses

Ethnic Group	Total Enrolled	Regular		Alternative		Special	
		N	P	N	P	N	P
African American	2,302	1,712	74.4	8	0.3	582	25.3
American Indian	244	216	88.5	0	0.0	28	11.5
Asian American	5,145	4,791	93.1	9	0.2	345	6.7
Filipino	2,041	1,960	96.0	3	0.1	78	3.8
Mexican American	5,981	5,031	84.1	34	0.6	916	15.3
Other Latino	2,154	1,864	86.5	5	0.2	285	13.2
Pacific Islander	188	169	89.9	1	0.5	18	9.6
White, Non-Latino	13,175	12,718	96.5	58	0.4	399	3.0
Total Identified	31,230	28,461	91.1	118	0.4	2,651	8.5
Unknown	3,948	3,709	93.9	13	0.3	226	5.7
Nonresident Alien	342	304	88.9	0	0.0	38	11.1
Total, All Groups	35,520	32,474	91.4	131	0.4	2,915	8.2

Table 62

CSU First-Time Freshmen from California High Schools by Campus and Ethnic Group, Fall 2000 Profile

Campus	Number										Non-resident Alien	Total All Groups
	African American	Indian American	Asian American	Filipino	Mexican American	Other Latino	Pacific Islander	White Non-Latino	Total Identified	Unknown		
Bakersfield	42	8	27	23	169	31	0	211	511	31	2	544
Chico	37	22	95	13	140	53	6	1,342	1,708	207	1	1,916
Dominguez Hills	220	3	12	11	150	54	3	23	476	41	2	519
Fresno	138	16	274	33	492	73	4	619	1,649	171	32	1,852
Fullerton	112	15	490	153	575	205	11	839	2,400	270	30	2,700
Hayward	75	3	118	81	75	34	11	159	556	111	7	674
Humboldt	37	16	13	7	39	34	5	477	628	73	0	701
Long Beach	252	19	431	213	590	199	23	1,089	2,816	407	34	3,257
Los Angeles	89	8	170	39	496	220	1	61	1,084	73	26	1,183
Maritime Academy	4	2	3	1	3	2	0	58	73	7	1	81
Monterey Bay	18	4	11	7	94	22	2	215	373	50	3	426
Northridge	332	8	314	144	540	323	8	671	2,340	391	35	2,766
Pomona	95	14	810	266	446	176	11	608	2,426	245	55	2,726
Sacramento	164	16	417	117	283	73	24	761	1,855	212	11	2,078
San Bernardino	159	11	57	31	324	83	2	374	1,041	117	9	1,167
San Diego	175	25	243	225	534	170	26	1,669	3,067	358	25	3,450
San Francisco	143	9	406	253	155	135	12	466	1,579	306	20	1,905
San Jose	137	13	892	308	289	99	15	487	2,240	239	14	2,493
San Luis Obispo	20	18	241	66	212	85	13	1,845	2,500	364	13	2,877
San Marcos	12	4	38	34	113	18	4	271	494	44	17	555
Sonoma	23	3	33	12	85	39	5	694	894	144	3	1,041
Stanislaus	18	7	50	4	177	26	2	236	520	87	2	609
Systemwide	2,302	244	5,145	2,041	5,981	2,154	188	13,175	31,230	3,948	342	35,520

Percent

Bakersfield	8.2	1.6	5.3	4.5	33.1	6.1	0.0	41.3	93.9	5.7	0.4	100.0
Chico	2.2	1.3	5.6	0.8	8.2	3.1	0.4	78.6	89.1	10.8	0.1	100.0
Dominguez Hills	46.2	0.6	2.5	2.3	31.5	11.3	0.6	4.8	91.7	7.9	0.4	100.0
Fresno	8.4	1.0	16.6	2.0	29.8	4.4	0.2	37.5	89.0	9.2	1.7	100.0
Fullerton	4.7	0.6	20.4	6.4	24.0	8.5	0.5	35.0	88.9	10.0	1.1	100.0
Hayward	13.5	0.5	21.2	14.6	13.5	6.1	2.0	28.6	82.5	16.5	1.0	100.0
Humboldt	5.9	2.5	2.1	1.1	6.2	5.4	0.8	76.0	89.6	10.4	0.0	100.0
Long Beach	8.9	0.7	15.3	7.6	21.0	7.1	0.8	38.7	86.5	12.5	1.0	100.0
Los Angeles	8.2	0.7	15.7	3.6	45.8	20.3	0.1	5.6	91.6	6.2	2.2	100.0
Maritime Academy	5.5	2.7	4.1	1.4	4.1	2.7	0.0	79.5	90.1	8.6	1.2	100.0
Monterey Bay	4.8	1.1	2.9	1.9	25.2	5.9	0.5	57.6	87.6	11.7	0.7	100.0
Northridge	14.2	0.3	13.4	6.2	23.1	13.8	0.3	28.7	84.6	14.1	1.3	100.0
Pomona	3.9	0.6	33.4	11.0	18.4	7.3	0.5	25.1	89.0	9.0	2.0	100.0
Sacramento	8.8	0.9	22.5	6.3	15.3	3.9	1.3	41.0	89.3	10.2	0.5	100.0
San Bernardino	15.3	1.1	5.5	3.0	31.1	8.0	0.2	35.9	89.2	10.0	0.8	100.0
San Diego	5.7	0.8	7.9	7.3	17.4	5.5	0.8	54.4	88.9	10.4	0.7	100.0
San Francisco	9.1	0.6	25.7	16.0	9.8	8.5	0.8	29.5	82.9	16.1	1.0	100.0
San Jose	6.1	0.6	39.8	13.8	12.9	4.4	0.7	21.7	89.9	9.6	0.6	100.0
San Luis Obispo	0.8	0.7	9.6	2.6	8.5	3.4	0.5	73.8	86.9	12.7	0.5	100.0
San Marcos	2.4	0.8	7.7	6.9	22.9	3.6	0.8	54.9	89.0	7.9	3.1	100.0
Sonoma	2.6	0.3	3.7	1.3	9.5	4.4	0.6	77.6	85.9	13.8	0.3	100.0
Stanislaus	3.5	1.3	9.6	0.8	34.0	5.0	0.4	45.4	85.4	14.3	0.3	100.0
Systemwide	7.4	0.8	16.5	6.5	19.2	6.9	0.6	42.2	87.9	11.1	1.0	100.0

Table 63

**CSU First-Time Freshmen from California Public High Schools by Ethnic Group*
Fall 1990 to Fall 2000**

Ethnic Group	1990	1991	1992	1993	1994	1995	1996	1997	1998	1999	2000
Number											
African American	1,772	1,767	1,552	1,468	1,745	1,850	2,116	2,082	1,837	1,959	2,032
American Indian	211	195	156	192	215	290	241	238	209	225	216
Asian American	4,488	4,172	3,628	3,515	3,708	3,627	3,776	3,951	4,119	4,615	4,844
Filipino	1,238	1,031	830	849	1,027	1,291	1,408	1,505	1,582	1,598	1,595
Mexican American	3,345	3,437	3,191	3,484	4,107	4,425	4,714	4,824	4,866	5,122	5,308
Other Latino	803	981	907	904	1,195	1,401	1,450	1,424	1,471	1,561	1,784
Pacific Islander	109	79	98	88	98	108	119	130	140	147	166
White, Non-Latino	10,634	9,270	7,245	6,620	7,340	8,212	8,812	8,678	9,475	10,247	11,411
Total Identified	22,600	20,932	17,607	17,120	19,435	21,204	22,636	22,832	23,699	25,474	27,356
Unknown	1,403	1,358	1,133	1,203	1,355	1,724	2,264	2,552	2,822	3,721	3,325
Nonresident Alien	403	400	438	459	651	290	279	256	260	259	255
All Groups	24,406	22,690	19,178	18,782	21,441	23,218	25,179	25,640	26,781	29,454	30,936
Percent											
African American	7.8	8.4	8.8	8.6	9.0	8.7	9.3	9.1	7.8	7.7	7.4
American Indian	0.9	0.9	0.9	1.1	1.1	1.4	1.1	1.0	0.9	0.9	0.8
Asian American	19.9	19.9	20.6	20.5	19.1	17.1	16.7	17.3	17.4	18.1	17.7
Filipino	5.5	4.9	4.7	5.0	5.3	6.1	6.2	6.6	6.7	6.3	5.8
Mexican American	14.8	16.4	18.1	20.4	21.1	20.9	20.8	21.1	20.5	20.1	19.4
Other Latino	3.6	4.7	5.2	5.3	6.1	6.6	6.4	6.2	6.2	6.1	6.5
Pacific Islander	0.5	0.4	0.6	0.5	0.5	0.5	0.5	0.6	0.6	0.6	0.6
White, Non-Latino	47.1	44.3	41.1	38.7	37.8	38.7	38.9	38.0	40.0	40.2	41.7
Total Identified	92.6	92.3	91.8	91.2	90.6	91.3	89.9	89.0	88.5	86.5	88.4
Unknown	5.7	6.0	5.9	6.4	6.3	7.4	9.0	10.0	10.5	12.6	10.7
Nonresident Alien	1.7	1.8	2.3	2.4	3.0	1.2	1.1	1.0	1.0	0.9	0.8
All Groups	100.0	100.0	100.0	100.0	100.0	100.0	100.0	100.0	100.0	100.0	100.0

Table 64

**CSU First-Time Freshmen from California Private High Schools by Ethnic Group*
Fall 1990 to Fall 2000**

Ethnic Group	1990	1991	1992	1993	1994	1995	1996	1997	1998	1999	2000
Number											
African American	276	225	202	183	248	227	277	285	278	238	270
American Indian	32	34	31	23	33	28	29	43	34	30	28
Asian American	186	167	144	139	171	168	201	221	231	234	301
Filipino	407	337	296	270	293	319	403	380	426	447	446
Mexican American	551	618	523	531	517	639	666	680	650	672	673
Other Latino	268	258	213	215	253	301	334	319	259	343	370
Pacific Islander	20	15	24	13	11	27	22	25	18	25	22
White, Non-Latino	1,705	1,414	1,089	986	1,125	1,249	1,470	1,444	1,624	1,688	1,764
Total Identified	3,445	3,068	2,522	2,360	2,651	2,958	3,402	3,397	3,520	3,677	3,874
Unknown	295	240	199	216	236	374	455	468	509	663	623
Nonresident Alien	30	22	38	20	27	28	26	25	36	59	87
All Groups	3,770	3,330	2,759	2,596	2,914	3,360	3,883	3,890	4,065	4,399	4,584
Percent											
African American	8.0	7.3	8.0	7.8	9.4	7.7	8.1	8.4	7.9	6.5	7.0
American Indian	0.9	1.1	1.2	1.0	1.2	0.9	0.9	1.3	1.0	0.8	0.7
Asian American	5.4	5.4	5.7	5.9	6.5	5.7	5.9	6.5	6.6	6.4	7.8
Filipino	11.8	11.0	11.7	11.4	11.1	10.8	11.8	11.2	12.1	12.2	11.5
Mexican American	16.0	20.1	20.7	22.5	19.5	21.6	19.6	20.0	18.5	18.3	17.4
Other Latino	7.8	8.4	8.4	9.1	9.5	10.2	9.8	9.4	7.4	9.3	9.6
Pacific Islander	0.6	0.5	1.0	0.6	0.4	0.9	0.6	0.7	0.5	0.7	0.6
White, Non-Latino	49.5	46.1	43.2	41.8	42.4	42.2	43.2	42.5	46.1	45.9	45.5
Total Identified	91.4	92.1	91.4	90.9	91.0	88.0	87.6	87.3	86.6	83.6	84.5
Unknown	7.8	7.2	7.2	8.3	8.1	11.1	11.7	12.0	12.5	15.1	13.6
Nonresident Alien	0.8	0.7	1.4	0.8	0.9	0.8	0.7	0.6	0.9	1.3	1.9
All Groups	100.0	100.0	100.0	100.0	100.0	100.0	100.0	100.0	100.0	100.0	100.0

*Percents for ethnic groups are based on the "Total Identified" counts.

Table 65

Total Undergraduate Transfer Enrollment by Term for the 2000-2001 College Year

(By Campus)

Campus	Summer	Fall*	Winter	Spring	Total
Bakersfield	21	746	326	127	1,220
Chico	0	1,792	0	818	2,610
Dominguez Hills**	0	1,270	0	727	1,997
Fresno	0	1,660	0	879	2,539
Fullerton	0	2,932	0	2,093	5,025
Hayward	226	1,281	582	348	2,437
Humboldt	36	805	0	340	1,181
Long Beach	0	2,899	0	1,133	4,032
Los Angeles	232	1,263	576	446	2,517
Maritime Academy	0	51	0	0	51
Monterey Bay	0	376	0	166	542
Northridge	10	3,214	0	1,778	5,002
Pomona	116	1,264	461	405	2,246
Sacramento	0	3,189	0	1,605	4,794
San Bernardino	0	1,516	612	301	2,429
San Diego	0	2,653	0	2,197	4,850
San Francisco	1	2,615	0	1,320	3,936
San Jose	0	2,556	0	1,280	3,836
San Luis Obispo	306	755	339	9	1,409
San Marcos	0	934	0	549	1,483
Sonoma	0	865	0	358	1,223
Stanislaus	1	935	139	380	1,455
Campus Total	949	35,571	3,035	17,259	56,814

(Systemwide, from 1960-1961 College Year)

College Year	Summer	Fall*	Winter	Spring	Total
1960-61	0	15,544	271	8,423	24,238
1961-62	0	15,090	269	6,926	22,285
1962-63	0	17,004	283	8,585	25,872
1963-64	0	18,510	280	8,320	27,110
1964-65	0	19,894	396	8,587	28,877
1965-66	84	20,742	409	11,307	32,542
1966-67	430	26,623	657	12,145	39,855
1967-68	965	29,293	1,309	13,824	45,391
1968-69	1,455	35,047	2,254	11,059	49,815
1969-70	1,818	34,440	2,202	16,233	54,693
1970-71	3,069	34,822	3,276	19,844	61,011
1971-72	3,744	39,317	3,043	20,228	66,332
1972-73	2,270	43,043	2,964	20,877	69,154
1973-74	1,879	43,706	3,269	20,744	69,598
1974-75	1,801	43,475	3,603	21,395	70,274
1975-76	1,844	47,717	3,493	19,571	72,625
1976-77	1,985	43,492	3,446	21,722	70,645
1977-78	2,091	45,967	3,392	19,405	70,855
1978-79	2,375	43,723	3,173	18,498	67,769
1979-80	1,916	43,110	3,603	18,650	67,279
1980-81	1,925	42,612	3,365	19,015	66,917
1981-82	1,803	41,151	3,128	17,470	63,552
1982-83	1,159	39,784	3,152	17,750	61,845
1983-84	1,519	40,352	2,824	17,555	62,250
1984-85	1,400	40,116	3,108	17,128	61,752
1985-86	1,462	39,953	3,358	17,398	62,171
1986-87	1,361	37,268	2,564	18,092	59,285
1987-88	1,320	37,349	2,802	18,487	59,958
1988-89	1,384	38,775	2,675	17,734	60,568
1989-90	1,393	36,791	2,925	18,961	60,070
1990-91	1,456	37,647	2,619	18,505	60,227
1991-92	1,464	35,543	2,732	16,449	56,188
1992-93	1,201	34,588	2,113	12,391	50,293
1993-94	912	35,745	2,643	14,889	54,189
1994-95	804	36,936	3,156	16,443	57,339
1995-96	787	39,114	3,073	17,179	60,153
1996-97	849	39,821	2,873	16,240	59,783
1997-98	922	36,673	2,980	15,507	56,082
1998-99	1,084	34,848	2,850	15,819	54,601
1999-00	915	36,479	2,917	17,090	57,401
2000-01	949	35,571	3,035	17,259	56,814

Note: Table does not include Summer Arts, Statewide Nursing, International Programs, or CalStateTEACH.

*Fall 2000 figures reflect final fall data used in college year reporting.

**Beginning fall 1998, Statewide Nursing is included in the enrollment for Dominguez Hills.

Table 65 (continued)

Percent Distribution of Undergraduate Transfer Enrollment by Term

College Year	Summer	Fall*	Winter	Spring
1965-66	0.3	63.7	1.3	34.7
1970-71	5.0	57.1	5.4	32.5
1975-76	2.5	65.7	4.8	26.9
1976-77	2.8	61.6	4.9	30.7
1977-78	3.0	64.9	4.8	27.4
1978-79	3.5	64.5	4.7	27.3
1979-80	2.8	64.1	5.4	27.7
1980-81	2.9	63.7	5.0	28.4
1981-82	2.8	64.8	4.9	27.5
1982-83	1.9	64.3	5.1	28.7
1983-84	2.4	64.8	4.5	28.2
1984-85	2.3	65.0	5.0	27.7
1985-86	2.4	64.3	5.4	28.0
1986-87	2.3	62.9	4.3	30.5
1987-88	2.2	62.3	4.7	30.8
1988-89	2.3	64.0	4.4	29.3
1989-90	2.3	61.2	4.9	31.6
1990-91	2.4	62.5	4.3	30.7
1991-92	2.6	63.3	4.9	29.3
1992-93	2.4	68.8	4.2	24.6
1993-94	1.7	66.0	4.9	27.5
1994-95	1.4	64.4	5.5	28.7
1995-96	1.3	65.0	5.1	28.6
1996-97	1.4	66.6	4.8	27.2
1997-98	1.6	65.4	5.3	27.7
1998-99	2.0	63.8	5.2	29.0
1999-00	1.6	63.6	5.1	29.8
2000-01	1.7	62.6	5.3	30.4

Note: Table does not include Summer Arts, Statewide Nursing, International Programs, or CalStateTEACH.

*Fall 2000 figures reflect final fall data used in college year reporting.

**Beginning fall 1998, Statewide Nursing is included in the enrollment for Dominguez Hills.

Table 66
Total Undergraduate Transfers by Class Level, Fall 2000 Profile
(By Campus)

Campus	Freshman	Sophomore	Junior	Senior	Total
Bakersfield	58	106	493	86	743
Chico	94	332	1,314	52	1,792
Dominguez Hills	43	146	945	136	1,270
Fresno	127	220	1,223	90	1,660
Fullerton	46	159	2,560	167	2,932
Hayward	78	104	972	127	1,281
Humboldt	54	141	531	79	805
Long Beach	97	196	2,083	523	2,899
Los Angeles	65	82	858	258	1,263
Maritime Academy	18	16	12	5	51
Monterey Bay	36	53	250	37	376
Northridge	88	399	2,504	223	3,214
Pomona	65	135	872	192	1,264
Sacramento	212	311	2,403	263	3,189
San Bernardino	110	171	1,134	101	1,516
San Diego	36	90	2,405	122	2,653
San Francisco	134	238	2,059	184	2,615
San Jose	98	178	2,092	188	2,556
San Luis Obispo	6	17	731	1	755
San Marcos	54	73	716	91	934
Sonoma	22	73	691	79	865
Stanislaus	50	97	716	72	935
All Campuses	1,591	3,337	27,564	3,076	35,568

(Systemwide, from Fall 1960)

Fall	Freshman	Sophomore	Junior	Senior	Total
1960	1,967	4,490	7,565	1,522	15,544
1961	1,771	3,806	8,145	1,368	15,090
1962	1,981	4,330	9,357	1,336	17,004
1963	2,114	4,515	10,486	1,395	18,510
1964	1,852	4,508	11,971	1,563	19,894
1965	1,766	4,389	12,947	1,640	20,742
1966	1,741	6,106	16,892	1,884	26,623
1967	1,740	6,522	19,121	1,910	29,293
1968	2,571	7,543	22,847	2,086	35,047
1969	2,339	6,194	24,137	1,770	34,440
1970	1,929	5,414	25,930	1,549	34,822
1971	2,043	5,855	29,393	2,026	39,317
1972	3,021	8,137	29,440	2,445	43,043
1973	4,169	9,475	27,145	2,917	43,706
1974	4,882	11,439	24,247	2,907	43,475
1975	5,049	13,837	25,200	3,631	47,717
1976	4,995	11,424	24,133	2,940	43,492
1977	5,462	12,809	24,358	3,338	45,967
1978	5,740	12,861	22,077	3,045	43,723
1979	6,372	13,396	20,268	3,074	43,110
1980	5,667	12,444	21,340	3,161	42,612
1981	5,193	11,561	21,401	2,996	41,151
1982	4,365	11,226	21,427	2,766	39,784
1983	4,380	10,225	22,796	2,951	40,352
1984	4,048	10,390	22,636	3,042	40,116
1985	4,135	10,848	21,988	2,982	39,953
1986	3,438	9,904	21,099	2,827	37,268
1987	3,238	9,648	21,559	2,904	37,349
1988	3,608	10,019	22,329	2,819	38,775
1989	3,356	9,782	20,869	2,784	36,791
1990	3,127	9,699	21,599	3,222	37,647
1991	2,354	8,798	21,454	2,937	35,543
1992	2,186	8,085	21,325	2,992	34,588
1993	2,016	8,094	22,131	3,504	35,745
1994	2,131	7,262	23,943	3,600	36,936
1995	2,412	8,422	24,429	3,851	39,114
1996	2,640	8,172	25,263	3,746	39,821
1997	1,895	5,847	25,596	3,335	36,673
1998	1,641	5,122	24,624	3,461	34,848
1999	1,665	5,196	26,067	3,551	36,479
2000	1,591	3,337	27,564	3,076	35,568

Table 67

**Total College Year Undergraduate Transfers by Institution of Origin, All Terms 2000-2001 College Year*
(By Campus)**

Campus	California Colleges and Universities				California Total	Other States	Foreign and Unknown**	Total
	CSU	Community Colleges	University of California	Private Institutions				
Bakersfield	52	1,024	17	26	1,119	84	17	1,220
Chico	127	2,223	30	37	2,417	157	36	2,610
Dominguez Hills***	111	1,697	20	46	1,874	103	20	1,997
Fresno	133	2,139	38	56	2,366	89	84	2,539
Fullerton	269	4,436	45	78	4,828	147	50	5,025
Hayward	192	1,949	43	43	2,227	148	62	2,437
Humboldt	76	858	17	5	956	221	4	1,181
Long Beach	201	3,438	35	64	3,738	174	120	4,032
Los Angeles	128	2,115	43	61	2,347	110	60	2,517
Maritime Academy	4	38	0	0	42	8	1	51
Monterey Bay	21	477	2	8	508	31	3	542
Northridge	254	4,299	62	81	4,696	255	51	5,002
Pomona	147	1,905	47	53	2,152	87	7	2,246
Sacramento	412	3,970	80	59	4,521	246	27	4,794
San Bernardino	118	1,999	48	69	2,234	164	31	2,429
San Diego	130	4,152	42	52	4,376	399	75	4,850
San Francisco	230	3,213	51	62	3,556	219	161	3,936
San Jose	199	3,243	57	29	3,528	223	85	3,836
San Luis Obispo	64	1,280	10	10	1,364	38	7	1,409
San Marcos	154	1,187	14	28	1,383	98	2	1,483
Sonoma	72	1,025	22	22	1,141	62	20	1,223
Stanislaus	93	1,233	13	39	1,378	67	10	1,455
Campus Total	3,187	47,900	736	928	52,751	3,130	933	56,814

* Figures used in this table include final fall data used in college year reporting.
 ** "Foreign and Unknown" includes U.S. possessions, foreign countries and students with unknown origins.
 *** Beginning 1998-99, Statewide Nursing is included in the enrollment for Dominguez Hills.

(Systemwide, from 1969-1970 College Year)

College Year	California Colleges and Universities				State Total	Other States	Foreign and Unknown	Total*
	CSU	Community Colleges	University of California	Independent Colleges and Universities				
1969-70	4,274	43,963	1,341	1,401	50,979	3,153	561	54,693
1970-71	4,999	49,245	1,616	1,550	57,410	3,075	526	61,011
1971-72	5,398	52,988	1,859	1,918	62,163	3,415	754	66,332
1972-73	6,008	53,820	2,285	2,198	64,311	4,133	710	69,154
1973-74	7,226	51,335	2,853	2,386	63,800	5,114	684	69,598
1974-75	7,120	51,144	3,108	2,558	63,930	5,608	736	70,274
1975-76	7,227	52,917	3,059	2,670	65,873	5,891	861	72,625
1976-77	7,034	51,230	3,206	2,569	64,039	5,752	854	70,645
1977-78	6,741	51,159	3,040	2,615	63,555	6,402	898	70,855
1978-79	6,849	47,430	3,066	2,866	60,211	6,664	894	67,769
1979-80	7,055	46,326	2,929	2,948	59,258	6,960	1,061	67,279
1980-81	6,692	46,649	2,726	2,903	58,970	6,731	1,216	66,917
1981-82	6,184	45,283	2,437	2,658	56,562	5,869	1,121	63,552
1982-83	5,634	45,400	2,350	2,267	55,651	5,209	985	61,845
1983-84	5,741	45,726	2,374	2,226	56,067	5,149	1,034	62,250
1984-85	5,665	45,476	2,221	2,197	55,559	5,240	953	61,752
1985-86	5,750	45,469	2,240	2,219	55,678	5,500	990	62,168
1986-87	5,393	43,666	1,839	2,120	53,018	5,222	1,045	59,285
1987-88	5,303	44,701	1,775	1,949	53,728	5,187	1,043	59,958
1988-89	5,446	45,402	1,588	1,884	54,320	5,137	1,111	60,568
1989-90	4,936	45,724	1,453	1,788	53,901	4,942	1,227	60,070
1990-91	4,762	46,678	1,311	1,654	54,405	4,594	1,228	60,227
1991-92	4,174	44,900	1,013	1,265	51,352	3,706	1,130	56,188
1992-93	3,214	40,981	799	1,031	46,025	3,264	1,004	50,293
1993-94	3,547	44,454	891	1,036	49,928	3,385	876	54,189
1994-95	3,511	46,912	942	1,213	52,587	3,741	1,011	57,339
1995-96	3,850	48,688	1,111	1,438	55,087	4,094	972	60,153
1996-97	3,745	48,349	1,076	1,371	54,541	4,238	1,004	59,783
1997-98	3,382	45,546	1,045	1,238	51,211	3,907	964	56,082
1998-99	3,357	44,989	948	1,089	50,383	3,317	901	54,601
1999-00	3,368	47,706	899	1,045	53,018	3,512	871	57,401
2000-01	3,187	47,900	736	928	52,751	3,130	933	56,814

*Totals include students whose institution of origin is unknown.
 Note: This table does not include Summer Arts, Statewide Nursing, International Programs, or CalStateTEACH.
 Beginning 1998-1999, Statewide Nursing is included in the enrollment for Dominguez Hills.

Table 68

College Year Undergraduate Transfers by Institution of Origin and Term, from 1970-1971

College Year	Summer	Fall*	Winter	Spring	Total
California Community Colleges					
1970-71	2,058	29,059	2,225	15,903	49,245
1971-72	2,748	32,546	1,998	15,697	52,989
1972-73	1,595	34,619	1,930	15,676	53,820
1973-74	1,189	33,089	1,997	15,060	51,335
1974-75	1,098	32,646	2,171	15,229	51,144
1975-76	1,046	35,537	2,269	14,065	52,917
1976-77	1,146	32,653	2,208	15,223	51,230
1977-78	1,243	34,001	2,174	13,741	51,159
1978-79	1,408	31,609	1,929	12,484	47,430
1979-80	1,140	30,483	2,240	12,463	46,326
1980-81	1,122	30,527	2,063	12,937	46,649
1981-82	1,052	30,072	1,967	12,192	45,283
1982-83	643	29,824	2,056	12,877	45,400
1983-84	873	30,297	1,831	12,725	45,726
1984-85	868	30,134	2,097	12,377	45,476
1985-86	879	29,682	2,279	12,629	45,469
1986-87	852	27,761	1,726	13,327	43,666
1987-88	852	28,257	1,921	13,671	44,701
1988-89	835	29,394	1,820	13,353	45,402
1989-90	935	28,331	2,072	14,386	45,724
1990-91	1,017	29,370	1,805	14,486	46,678
1991-92	1,106	28,557	1,996	13,241	44,900
1992-93	877	28,375	1,543	10,186	40,981
1993-94	685	29,564	2,191	12,014	44,454
1994-95	603	30,419	2,592	13,298	46,912
1995-96	579	31,885	2,534	13,690	48,688
1996-97	632	32,383	2,331	13,003	48,349
1997-98	714	29,973	2,421	12,438	45,546
1998-99	837	28,842	2,374	12,936	44,989
1999-00	737	30,469	2,415	14,085	47,706
2000-01	751	30,187	2,569	14,393	47,900
California State University					
1970-71	384	2,370	424	1,821	4,999
1971-72	419	2,713	388	1,877	5,397
1972-73	208	3,287	402	2,111	6,008
1973-74	194	4,326	503	2,203	7,226
1974-75	167	4,096	540	2,317	7,120
1975-76	189	4,568	470	2,000	7,227
1976-77	210	3,893	476	2,455	7,034
1977-78	219	4,148	440	1,934	6,741
1978-79	204	4,200	439	2,006	6,849
1979-80	162	4,262	523	2,108	7,055
1980-81	160	4,023	466	2,043	6,692
1981-82	158	3,809	445	1,772	6,184
1982-83	114	3,386	430	1,704	5,634
1983-84	163	3,460	371	1,747	5,741
1984-85	137	3,508	363	1,657	5,665
1985-86	159	3,552	380	1,659	5,750
1986-87	170	3,155	288	1,780	5,393
1987-88	134	3,138	299	1,732	5,303
1988-89	261	3,300	299	1,586	5,446
1989-90	157	2,827	279	1,673	4,936
1990-91	157	2,905	265	1,435	4,762
1991-92	133	2,557	238	1,246	4,174
1992-93	129	2,109	156	820	3,214
1993-94	96	2,285	131	1,035	3,547
1994-95	72	2,172	189	1,078	3,511
1995-96	70	2,424	210	1,146	3,850
1996-97	74	2,384	176	1,111	3,745
1997-98	57	2,167	173	985	3,382
1998-99	87	2,131	162	977	3,357
1999-00	71	2,076	169	1,052	3,368
2000-01	60	1,934	173	1,020	3,187

*Fall 2000 figures reflect final fall data used in college year reporting.

Table 68 (continued)

College Year Undergraduate Transfers by Institution of Origin and Term, from 1970-1971

College Year	Summer	Fall*	Winter	Spring	Total
University of California					
1970-71	213	693	192	518	1,616
1971-72	179	857	183	640	1,859
1972-73	128	1,133	186	838	2,285
1973-74	156	1,521	223	953	2,853
1974-75	176	1,616	230	1,086	3,108
1975-76	218	1,825	182	834	3,059
1976-77	207	1,700	220	1,079	3,206
1977-78	187	1,782	191	880	3,040
1978-79	225	1,756	195	890	3,066
1979-80	188	1,713	159	869	2,929
1980-81	178	1,535	173	840	2,726
1981-82	162	1,451	153	671	2,437
1982-83	121	1,357	174	698	2,350
1983-84	147	1,395	145	687	2,374
1984-85	104	1,333	139	645	2,221
1985-86	141	1,321	150	628	2,240
1986-87	100	1,094	102	543	1,839
1987-88	82	1,002	106	585	1,775
1988-89	58	977	83	470	1,588
1989-90	86	823	98	446	1,453
1990-91	60	775	64	412	1,311
1991-92	48	640	52	273	1,013
1992-93	32	550	39	178	799
1993-94	28	545	48	270	891
1994-95	27	569	54	292	942
1995-96	30	692	50	339	1,111
1996-97	31	707	52	286	1,076
1997-98	42	651	53	299	1,045
1998-99	35	573	49	291	948
1999-00	27	555	59	258	899
2000-01	31	395	48	262	736
California Independent Colleges and Universities					
1970-71	143	769	152	486	1,550
1971-72	166	1,007	143	602	1,918
1972-73	157	1,265	128	648	2,198
1973-74	164	1,367	156	699	2,386
1974-75	187	1,422	196	753	2,558
1975-76	202	1,652	154	662	2,670
1976-77	242	1,401	145	781	2,569
1977-78	257	1,559	169	630	2,615
1978-79	327	1,568	178	793	2,866
1979-80	245	1,719	190	794	2,948
1980-81	239	1,698	183	783	2,903
1981-82	236	1,549	166	707	2,658
1982-83	156	1,428	115	568	2,267
1983-84	176	1,320	129	601	2,226
1984-85	133	1,335	136	593	2,197
1985-86	107	1,392	142	578	2,219
1986-87	104	1,333	108	575	2,120
1987-88	100	1,193	109	547	1,949
1988-89	70	1,195	112	507	1,884
1989-90	87	1,065	129	507	1,788
1990-91	79	1,009	107	459	1,654
1991-92	66	825	95	279	1,265
1992-93	39	745	65	182	1,031
1993-94	33	624	61	318	1,036
1994-95	27	766	73	356	1,222
1995-96	32	935	74	397	1,438
1996-97	35	929	81	326	1,371
1997-98	30	786	80	342	1,238
1998-99	40	671	54	324	1,089
1999-00	22	660	62	301	1,045
2000-01	26	583	57	262	928

*Fall 2000 figures reflect final fall data used in college year reporting.

Table 68 (continued)

College Year Undergraduate Transfers by Institution of Origin and Term, from 1970-1971

College Year	Summer	Fall*	Winter	Spring	Total
All California Colleges and Universities					
1970-71	2,798	32,891	2,993	18,728	57,410
1971-72	3,512	37,123	2,712	18,816	62,163
1972-73	2,088	40,304	2,646	19,273	64,311
1973-74	1,703	40,303	2,879	18,915	63,800
1974-75	1,628	39,780	3,137	19,385	63,930
1975-76	1,655	43,582	3,075	17,561	65,873
1976-77	1,805	39,647	3,049	19,538	64,039
1977-78	1,906	41,490	2,974	17,185	63,555
1978-79	2,164	39,133	2,741	16,173	60,211
1979-80	1,735	38,177	3,112	16,234	59,258
1980-81	1,699	37,783	2,885	16,603	58,970
1981-82	1,608	36,881	2,731	15,342	56,562
1982-83	1,034	35,995	2,775	15,847	55,651
1983-84	1,359	36,472	2,476	15,760	56,067
1984-85	1,242	36,310	2,735	15,272	55,559
1985-86	1,286	35,947	2,951	15,494	55,678
1986-87	1,226	33,343	2,224	16,225	53,018
1987-88	1,168	33,590	2,435	16,535	53,728
1988-89	1,224	34,866	2,314	15,916	54,320
1989-90	1,265	33,046	2,578	17,012	53,901
1990-91	1,313	34,059	2,241	16,792	54,405
1991-92	1,353	32,579	2,381	15,039	51,352
1992-93	1,077	31,779	1,803	11,366	46,025
1993-94	842	33,018	2,431	13,637	49,928
1994-95	729	33,926	2,908	15,024	52,587
1995-96	711	35,936	2,868	15,572	55,087
1996-97	772	36,403	2,640	14,726	54,541
1997-98	843	33,577	2,727	14,064	51,211
1998-99	999	32,217	2,639	14,528	50,383
1999-00	857	33,760	2,705	15,696	53,018
2000-01	868	33,099	2,847	15,937	52,751

*Fall 2000 figures reflect final fall data used in college year reporting.

Table 69

**Total Lower and Upper Division Undergraduate Transfers from California Community Colleges,
Fall 1989 to Fall 2000**

College	1989			1990			1991		
	Lower Division	Upper Division	Total	Lower Division	Upper Division	Total	Lower Division	Upper Division	Total
Alameda	30	70	100	34	74	108	40	85	125
Allan Hancock	67	89	156	43	99	142	43	115	158
American River	172	510	682	158	626	784	122	648	770
American River - Placerville	5	3	8	1	4	5	1	1	2
Antelope Valley	49	114	163	49	98	147	53	99	152
Bakersfield	190	207	397	190	182	372	157	201	358
Barstow	9	16	25	11	11	22	14	10	24
Butte	147	217	364	128	280	408	170	288	458
Cabrillo	99	154	253	115	166	281	90	148	238
Canada	39	86	125	38	65	103	27	70	97
Canyons	35	95	130	42	109	151	58	133	191
Cerritos	143	247	390	148	287	435	141	282	423
Cerro Coso	17	20	37	19	17	36	21	26	47
Chabot/Las Positas	302	312	614	276	312	588	246	320	566
Chaffey	102	148	250	126	150	276	132	164	296
Citrus	92	112	204	95	125	220	84	128	212
City College of San Francisco	138	642	780	125	670	795	76	594	670
Coastline	5	18	23	7	22	29	8	24	32
Columbia	10	32	42	16	24	40	18	22	40
Compton	19	49	68	38	71	109	25	44	69
Contra Costa	35	69	104	39	77	116	20	76	96
Cosumnes River	46	120	166	46	125	171	33	158	191
Crafton Hills	57	59	116	70	64	134	61	48	109
Cuesta	94	130	224	118	155	273	146	223	369
Cuyamaca	7	20	27	6	41	47	15	39	54
Cypress	130	223	353	115	239	354	107	257	364
De Anza	343	575	918	331	465	796	305	498	803
Desert	53	85	138	57	97	154	47	91	138
Diablo Valley	291	546	837	270	503	773	174	499	673
East Los Angeles	84	198	282	87	239	326	109	205	314
El Camino	181	417	598	203	498	701	185	481	666
Evergreen Valley	82	100	182	89	92	181	96	112	208
Feather River	4	10	14	6	9	15	4	16	20
Foothill	149	210	359	115	179	294	99	183	282
Fresno City	289	439	728	261	474	735	199	513	712
Fullerton	281	354	635	291	359	650	242	377	619
Gavilan	66	58	124	52	58	110	57	50	107
Glendale	93	214	307	103	243	346	112	258	370
Golden West	120	216	336	103	234	337	119	223	342
Grossmont	138	403	541	164	429	593	125	417	542
Hartnell	81	120	201	62	112	174	61	138	199
Imperial Valley	12	113	125	31	126	157	14	94	108
Indian Valley	4	4	8	3	5	8	0	2	2
Irvine Valley	32	32	64	43	37	80	45	59	104
Kings River (now Reedley College)	32	74	106	39	82	121	33	97	130
Lake Tahoe	13	17	30	9	16	25	4	23	27
Laney	61	101	162	42	90	132	34	74	108
Lassen	14	34	48	9	26	35	15	24	39
Long Beach City	117	341	458	116	372	488	111	357	468
Los Angeles City	77	230	307	78	247	325	64	230	294
Los Angeles Harbor	72	156	228	68	164	232	56	128	184
Los Angeles Instr TV	0	0	0	0	2	2	0	1	1
Los Angeles Metro (defunct)	1	0	1	0	2	2	0	0	0
Los Angeles Mission	10	46	56	11	31	42	14	31	45
Los Angeles Pierce	156	348	504	180	422	602	173	390	563
Los Angeles Southwest	19	43	62	28	57	85	27	61	88
Los Angeles Trade-Tech	32	65	97	31	59	90	29	77	106
Los Angeles Valley	137	276	413	132	344	476	110	295	405
Los Medanos	22	45	67	27	65	92	23	42	65
Marin	70	190	260	49	197	246	21	152	173

Table 69 (continued)

Total Lower and Upper Division Undergraduate Transfers from California Community Colleges,
Fall 1989 to Fall 2000

College	1989			1990			1991		
	Lower Division	Upper Division	Total	Lower Division	Upper Division	Total	Lower Division	Upper Division	Total
Mendocino	21	51	72	18	52	70	10	40	50
Merced	67	179	246	82	137	219	67	175	242
Merritt	42	78	120	36	54	90	31	57	88
Mira Costa	30	100	130	36	144	180	46	156	202
Mission	54	90	144	44	89	133	50	67	117
Modesto	150	259	409	192	201	393	127	269	396
Monterey Peninsula	70	89	159	57	123	180	42	116	158
Moorpark	120	239	359	122	247	369	121	265	386
Mt. San Antonio	290	268	558	265	249	514	225	256	481
Mt. San Jacinto	22	26	48	22	39	61	24	31	55
Napa Valley	43	105	148	40	99	139	28	90	118
Northwest Valley	1	0	1	0	0	0	0	0	0
Ohlone	143	141	284	101	128	229	107	137	244
Orange Coast	271	501	772	240	497	737	223	547	770
Oxnard	12	40	52	34	61	95	24	73	97
Palo Verde	2	7	9	0	0	0	1	2	3
Palomar	115	342	457	103	384	487	124	365	489
Pasadena City	229	388	617	233	388	621	211	400	611
Porterville	22	24	46	41	26	67	25	38	63
Rancho Santiago (now Santa Ana)	106	192	298	112	204	316	103	232	335
Redwoods	116	122	238	111	91	202	108	100	208
Rio Hondo	66	102	168	75	106	181	70	136	206
Riverside City	148	200	348	179	261	440	164	287	451
Sacramento City	127	409	536	111	449	560	83	507	590
Saddleback	202	236	438	168	326	494	191	294	485
San Bernardino Valley	125	181	306	122	158	280	102	126	228
San Diego City	44	181	225	48	166	214	67	202	269
San Diego Evening	4	12	16	1	3	4	0	0	0
San Diego Mesa	119	455	574	182	532	714	157	497	654
San Diego Miramar	11	30	41	10	48	58	16	49	65
San Joaquin Delta	148	379	527	158	379	537	114	381	495
San Jose City	92	111	203	99	105	204	79	96	175
San Mateo	160	352	512	139	304	443	101	262	363
Santa Barbara	85	128	213	94	168	262	89	158	247
Santa Monica	143	323	466	135	327	462	128	350	478
Santa Rosa	152	430	582	128	486	614	117	481	598
Sequoias	151	240	391	109	213	322	94	228	322
Shasta	72	195	267	60	240	300	45	202	247
Sierra	85	278	363	74	326	400	77	322	399
Siskiyou	19	40	59	17	44	61	15	36	51
Skyline	27	135	162	38	164	202	41	147	188
Solano	52	132	184	68	155	223	39	151	190
Southwestern	40	269	309	55	266	321	72	298	370
Taft	17	24	41	10	18	28	14	22	36
Ventura	94	195	289	105	229	334	96	249	345
Victor Valley	38	58	96	47	63	110	53	58	111
Vista	2	5	7	6	4	10	13	12	25
West Hills	23	31	54	23	40	63	20	32	52
West Los Angeles	47	84	131	63	105	168	35	99	134
West Valley	195	262	457	193	281	474	193	270	463
Woodland Ctr of Yuba	2	5	7	0	0	0	0	2	2
Yuba	45	150	195	49	165	214	39	150	189
Totals	9,636	18,695	28,331	9,598	19,772	29,370	8,636	19,921	28,557

Note: See the CSU Analytic Studies website at www.calstate.edu/AS/stat_reports/2000-2001/FCCCT00TOC.shtml for additional information on community college transfers.

Table 69 (continued)

**Total Lower and Upper Division Undergraduate Transfers from California Community Colleges,
Fall 1989 to Fall 2000**

College	1992			1993			1994		
	Lower Division	Upper Division	Total	Lower Division	Upper Division	Total	Lower Division	Upper Division	Total
Alameda	45	104	149	47	83	130	20	134	154
Allan Hancock	61	125	186	40	125	165	44	106	150
American River	133	600	733	117	674	791	91	660	751
American River - Placerville	0	2	2	1	4	5	0	2	2
Antelope Valley	54	116	170	67	100	167	39	134	173
Bakersfield	187	250	437	171	246	417	137	270	407
Barstow	3	12	15	7	7	14	7	12	19
Butte	99	238	337	73	282	355	99	270	369
Cabrillo	104	213	317	72	263	335	69	206	275
Canada	32	66	98	29	84	113	26	80	106
Canyons	56	130	186	93	103	196	43	119	162
Cerritos	154	269	423	96	289	385	100	317	417
Cerro Coso	21	27	48	17	34	51	13	22	35
Chabot	212	298	510	228	377	605	122	584	706
Chaffey	146	185	331	129	201	330	149	223	372
Citrus	90	139	229	99	163	262	91	173	264
City College of San Francisco	57	621	678	64	657	721	77	796	873
Coastline	5	38	43	7	33	40	10	44	54
Columbia	15	44	59	15	45	60	21	50	71
Compton	21	36	57	18	45	63	15	61	76
Contra Costa	17	72	89	31	122	153	19	118	137
Cosumnes River	31	173	204	42	167	209	60	246	306
Crafton Hills	53	73	126	43	71	114	35	66	101
Cuesta	148	197	345	100	319	419	92	264	356
Cuyamaca	13	60	73	22	72	94	22	99	121
Cypress	108	222	330	74	268	342	79	275	354
De Anza	338	576	914	334	654	988	270	576	846
Desert	33	81	114	55	112	167	38	97	135
Diablo Valley	179	583	762	185	568	753	162	656	818
East Los Angeles	86	188	274	61	185	246	74	231	305
El Camino	170	449	619	148	428	576	146	454	600
Evergreen Valley	110	100	210	109	169	278	100	156	256
Feather River	3	12	15	1	11	12	6	14	20
Foothill	74	172	246	93	202	295	81	213	294
Fresno City	214	469	683	212	556	768	194	560	754
Fullerton	272	436	708	185	459	644	199	465	664
Gavilan	53	76	129	66	77	143	44	85	129
Glendale	92	219	311	103	213	316	74	263	337
Golden West	98	270	368	105	279	384	121	358	479
Grossmont	114	391	505	131	414	545	133	409	542
Hartnell	64	124	188	68	136	204	58	145	203
Imperial Valley	13	110	123	11	125	136	15	146	161
Indian Valley	0	4	4	0	0	0	0	4	4
Irvine Valley	40	111	151	42	111	153	52	123	175
Kings River (now Reedley College)	38	68	106	49	98	147	43	115	158
Lake Tahoe	3	12	15	3	15	18	1	14	15
Laney	35	94	129	33	89	122	25	137	162
Las Positas	0	0	0	1	5	6	11	57	68
Lassen	12	27	39	4	23	27	6	24	30
Long Beach City	75	366	441	74	332	406	77	347	424
Los Angeles City	58	158	216	70	169	239	63	175	238
Los Angeles Harbor	48	136	184	54	105	159	41	150	191
Los Angeles Instr TV	0	0	0	0	0	0	0	0	0
Los Angeles Metro (defunct)	0	1	1	0	1	1	0	0	0
Los Angeles Mission	13	51	64	25	53	78	13	66	79
Los Angeles Pierce	160	348	508	200	322	522	118	318	436
Los Angeles Southwest	14	47	61	25	57	82	19	55	74
Los Angeles Trade-Tech	26	62	88	22	69	91	27	70	97
Los Angeles Valley	88	301	389	148	257	405	88	304	392
Los Medanos	22	49	71	28	66	94	15	86	101

Table 69 (continued)

Total Lower and Upper Division Undergraduate Transfers from California Community Colleges,
Fall 1989 to Fall 2000

College	1992			1993			1994		
	Lower Division	Upper Division	Total	Lower Division	Upper Division	Total	Lower Division	Upper Division	Total
Marin	25	124	149	29	151	180	18	151	169
Mendocino	7	42	49	8	51	59	7	50	57
Merced	48	182	230	68	197	265	84	186	270
Merritt	30	41	71	16	55	71	14	71	85
Mira Costa	42	139	181	80	132	212	72	145	217
Mission	41	77	118	50	127	177	36	144	180
Modesto	126	331	457	144	266	410	169	282	451
Monterey Peninsula	36	107	143	30	106	136	25	126	151
Moorpark	135	264	399	148	258	406	101	285	386
Mt. San Antonio	252	282	534	242	380	622	245	316	561
Mt. San Jacinto	30	42	72	34	53	87	35	73	108
Napa Valley	23	118	141	29	118	147	28	126	154
Ohlone	101	148	249	121	161	282	71	231	302
Orange Coast	192	546	738	147	604	751	143	654	797
Oxnard	16	61	77	38	70	108	16	67	83
Palo Verde	3	9	12	0	4	4	0	2	2
Palomar	122	416	538	124	415	539	135	489	624
Pasadena City	175	353	528	182	420	602	149	395	544
Porterville	29	45	74	25	37	62	10	53	63
Rancho Santiago (now Santa Ana)	93	257	350	84	283	367	99	335	434
Redwoods	103	132	235	58	178	236	34	212	246
Rio Hondo	63	117	180	75	121	196	64	137	201
Riverside City	166	300	466	177	315	492	128	327	455
Sacramento City	85	444	529	82	458	540	78	525	603
Saddleback	159	336	495	110	336	446	117	359	476
San Bernardino Valley	89	144	233	77	145	222	59	169	228
San Diego City	54	182	236	43	198	241	45	211	256
San Diego Evening	0	1	1	0	1	1	0	0	0
San Diego Mesa	103	409	512	107	391	498	126	457	583
San Diego Miramar	32	63	95	32	55	87	33	113	146
San Joaquin Delta	128	380	508	117	368	485	112	351	463
San Jose City	75	99	174	68	120	188	54	106	160
San Mateo	82	298	380	83	295	378	69	306	375
Santa Barbara	48	181	229	54	187	241	57	196	253
Santa Monica	142	369	511	195	345	540	94	366	460
Santa Rosa	92	476	568	131	504	635	76	524	600
Sequoias	83	196	279	71	202	273	64	222	286
Shasta	46	173	219	29	150	179	32	182	214
Sierra	71	318	389	71	364	435	55	407	462
Siskiyou	12	44	56	15	38	53	8	53	61
Skyline	29	156	185	33	151	184	32	187	219
Solano	35	165	200	44	180	224	48	201	249
Southwestern	74	310	384	50	290	340	88	331	419
Taft	26	24	50	13	17	30	12	27	39
Ventura	92	237	329	83	203	286	73	235	308
Victor Valley	43	72	115	37	72	109	34	98	132
Vista	2	8	10	3	15	18	1	11	12
West Hills	14	33	47	21	37	58	10	30	40
West Los Angeles	42	94	136	41	95	136	34	93	127
West Valley	201	295	496	169	420	589	145	348	493
Woodland Ctr of Yuba	0	2	2	1	1	2	0	4	4
Yuba	38	167	205	28	166	194	32	181	213
Totals	8,165	20,210	28,375	8,064	21,500	29,564	7,065	23,354	30,419

Note: See the CSU Analytic Studies website at www.calstate.edu/AS/stat_reports/2000-2001/FCCCT00TOC.shtml for additional information on community college transfers.

Table 69 (continued)

Total Lower and Upper Division Undergraduate Transfers from California Community Colleges,
Fall 1989 to Fall 2000

College	1995			1996			1997		
	Lower Division	Upper Division	Total	Lower Division	Upper Division	Total	Lower Division	Upper Division	Total
Alameda	21	152	173	32	131	163	26	107	133
Allan Hancock	28	143	171	33	130	163	33	122	155
American River	98	561	659	113	568	681	83	547	630
American River - Placerville	0	1	1	0	3	3	0	4	4
Antelope Valley	67	112	179	54	122	176	26	164	190
Bakersfield	213	279	492	236	280	516	150	299	449
Barstow	4	7	11	5	11	16	3	14	17
Butte	89	294	383	67	364	431	88	330	418
Cabrillo	58	247	305	48	229	277	32	201	233
Canada	16	89	105	35	89	124	16	77	93
Canyons	87	138	225	97	146	243	37	208	245
Cerritos	139	285	424	122	389	511	71	363	434
Cerro Coso	22	49	71	21	23	44	6	26	32
Chabot	108	426	534	162	335	497	127	317	444
Chaffey	152	214	366	130	187	317	89	274	363
Citrus	120	140	260	127	150	277	34	211	245
City College of San Francisco	56	787	843	66	732	798	47	566	613
Coastline	13	38	51	8	40	48	8	46	54
Columbia	18	60	78	25	58	83	23	53	76
Compton	34	44	78	13	89	102	26	81	107
Contra Costa	17	106	123	25	136	161	20	106	126
Copper Mountain	0	2	2	4	9	13	3	8	11
Cosumnes River	44	215	259	58	240	298	52	252	304
Crafton Hills	55	88	143	63	91	154	39	99	138
Cuesta	121	263	384	123	278	401	88	285	373
Cuyamaca	28	82	110	23	88	111	16	77	93
Cypress	125	272	397	88	314	402	52	351	403
De Anza	163	672	835	141	729	870	96	717	813
Desert	33	122	155	45	100	145	35	133	168
Diablo Valley	167	652	819	124	562	686	145	500	645
East Los Angeles	99	230	329	70	237	307	24	333	357
El Camino	169	447	616	148	552	700	82	504	586
Evergreen Valley	31	194	225	32	218	250	22	210	232
Feather River	6	27	33	4	18	22	3	25	28
Foothill	48	235	283	48	251	299	36	235	271
Fresno City	210	572	782	226	572	798	212	553	765
Fullerton	183	416	599	181	480	661	83	547	630
Gavilan	41	101	142	36	91	127	19	117	136
Glendale	107	243	350	120	305	425	40	296	336
Golden West	100	299	399	103	386	489	40	344	384
Grossmont	101	430	531	97	409	506	98	373	471
Hartnell	46	177	223	55	196	251	47	165	212
Imperial Valley	13	128	141	24	159	183	9	178	187
Indian Valley	0	3	3	0	4	4	0	0	0
Irvine Valley	74	130	204	61	158	219	36	169	205
Kings River (now Reedley College)	70	159	229	73	179	252	88	176	264
Lake Tahoe	4	15	19	5	21	26	4	33	37
Laney	23	140	163	26	170	196	26	145	171
Las Positas	15	85	100	42	90	132	33	68	101
Lassen	4	22	26	8	33	41	7	41	48
Long Beach City	93	387	480	56	438	494	50	402	452
Los Angeles City	63	193	256	52	195	247	30	287	317
Los Angeles Harbor	60	147	207	26	183	209	20	171	191
Los Angeles Instr TV	0	0	0	0	0	0	0	0	0
Los Angeles Metro (defunct)	0	1	1	0	1	1	0	0	0
Los Angeles Mission	49	60	109	26	78	104	15	83	98
Los Angeles Pierce	228	352	580	200	328	528	75	396	471
Los Angeles Southwest	34	59	93	26	87	113	12	85	97
Los Angeles Trade-Tech	38	81	119	28	96	124	12	118	130
Los Angeles Valley	146	320	466	170	322	492	46	394	440

Table 69 (continued)

Total Lower and Upper Division Undergraduate Transfers from California Community Colleges,
Fall 1989 to Fall 2000

College	1995			1996			1997		
	Lower Division	Upper Division	Total	Lower Division	Upper Division	Total	Lower Division	Upper Division	Total
Los Medanos	21	78	99	29	94	123	27	85	112
Marin	32	131	163	29	137	166	20	88	108
Mendocino	18	50	68	14	69	83	13	53	66
Merced	93	212	305	84	182	266	66	202	268
Merritt	14	89	103	22	56	78	18	64	82
Mira Costa	70	216	286	87	195	282	76	151	227
Mission	21	161	182	13	167	180	19	181	200
Modesto	159	343	502	150	357	507	130	319	449
Monterey Peninsula	29	141	170	24	107	131	25	102	127
Moorpark	149	314	463	184	295	479	63	381	444
Mt. San Antonio	301	315	616	264	407	671	108	504	612
Mt. San Jacinto	38	71	109	42	66	108	44	80	124
Napa Valley	40	134	174	32	111	143	22	144	166
Ohlone	68	240	308	82	222	304	69	242	311
Orange Coast	143	579	722	131	645	776	90	590	680
Oxnard	46	63	109	22	70	92	15	92	107
Palo Verde	1	4	5	4	6	10	0	3	3
Palomar	162	497	659	176	500	676	146	419	565
Pasadena City	182	467	649	176	482	658	95	534	629
Porterville	29	60	89	28	79	107	32	83	115
Rancho Santiago (now Santa Ana)	128	369	497	86	409	495	41	393	434
Redwoods	40	176	216	55	206	261	51	234	285
Rio Hondo	98	157	255	78	154	232	37	201	238
Riverside City	165	332	497	169	279	448	124	320	444
Sacramento City	94	472	566	69	486	555	76	411	487
Saddleback	172	345	517	130	361	491	75	360	435
San Bernardino Valley	68	209	277	82	199	281	58	190	248
San Diego City	34	211	245	18	102	120	26	162	188
San Diego Evening	0	0	0	0	0	0	0	1	1
San Diego Mesa	114	424	538	97	525	622	70	379	449
San Diego Miramar	30	150	180	39	108	147	39	108	147
San Joaquin Delta	117	411	528	127	437	564	102	440	542
San Jose City	36	139	175	35	180	215	17	183	200
San Mateo	81	299	380	75	308	383	41	286	327
Santa Barbara	62	222	284	61	209	270	46	184	230
Santa Monica	185	357	542	207	418	625	78	432	510
Santa Rosa	154	489	643	121	457	578	107	411	518
Sequoias	96	243	339	95	217	312	86	218	304
Shasta	35	200	235	28	197	225	42	250	292
Sierra	73	421	494	102	401	503	81	415	496
Siskiyou	8	40	48	10	26	36	10	36	46
Skyline	27	186	213	33	214	247	22	162	184
Solano	35	204	239	41	192	233	49	179	228
Southwestern	83	394	477	75	365	440	67	298	365
Taft	14	13	27	14	12	26	8	13	21
Ventura	95	197	292	96	266	362	48	271	319
Victor Valley	47	112	159	50	82	132	27	101	128
Vista	4	23	27	4	24	28	4	20	24
West Hills	11	32	43	16	34	50	19	37	56
West Los Angeles	48	100	148	33	116	149	24	135	159
West Valley	84	394	478	60	322	382	55	381	436
Woodland Ctr of Yuba	0	1	1	0	2	2	0	0	0
Yuba	22	178	200	35	183	218	34	177	211
Totals	8,027	23,858	31,885	7,765	24,618	32,383	5,282	24,691	29,973

Note: See the CSU Analytic Studies website at www.calstate.edu/AS/stat_reports/2000-2001/FCCCT00TOC.shtml for additional information on community college transfers.

Table 69 (continued)

Total Lower and Upper Division Undergraduate Transfers from California Community Colleges,
Fall 1989 to Fall 2000

College	1998			1999			2000		
	Lower Division	Upper Division	Total	Lower Division	Upper Division	Total	Lower Division	Upper Division	Total
Alameda	14	100	114	24	66	90	5	97	102
Allan Hancock	22	108	130	20	152	172	10	176	186
American River	100	540	640	75	534	609	63	614	677
American River - Placerville	0	1	1	0	1	1	0	1	1
Antelope Valley	28	124	152	58	176	234	29	240	269
Bakersfield	122	260	382	146	304	450	77	405	482
Barstow	6	21	27	9	13	22	7	28	35
Butte	74	350	424	60	397	457	92	374	466
Cabrillo	36	222	258	27	209	236	20	202	222
Canada	13	89	102	10	73	83	3	50	53
Canyons	18	198	216	22	202	224	38	235	273
Cerritos	40	321	361	49	365	414	36	387	423
Cerro Coso	14	35	49	15	34	49	5	34	39
Chabot	78	276	354	86	297	383	61	334	395
Chaffey	76	266	342	71	276	347	39	375	414
Citrus	47	207	254	65	255	320	29	253	282
City College of San Francisco	35	637	672	52	655	707	31	661	692
Coastline	5	41	46	3	43	46	3	51	54
Columbia	15	48	63	18	48	66	15	52	67
Compton	6	42	48	9	66	75	7	62	69
Contra Costa	11	109	120	24	120	144	9	124	133
Copper Mountain	3	5	8	1	3	4	0	5	5
Cosumnes River	38	255	293	48	262	310	42	298	340
Crafton Hills	51	90	141	52	106	158	29	96	125
Cuesta	59	300	359	87	355	442	26	369	395
Cuyamaca	17	61	78	13	83	96	4	103	107
Cypress	43	351	394	41	357	398	24	353	377
De Anza	105	676	781	83	677	760	76	675	751
Desert	23	141	164	32	129	161	15	137	152
Diablo Valley	140	541	681	124	564	688	93	605	698
East Los Angeles	55	249	304	44	271	315	12	338	350
El Camino	72	436	508	73	491	564	56	518	574
Evergreen Valley	14	215	229	16	198	214	14	157	171
Feather River	3	19	22	3	24	27	4	34	38
Foothill	43	203	246	40	211	251	17	211	228
Fresno City	183	485	668	154	528	682	113	561	674
Fullerton	60	604	664	58	637	695	47	607	654
Gavilan	16	109	125	10	97	107	2	97	99
Glendale	26	266	292	28	297	325	35	312	347
Golden West	34	373	407	27	319	346	20	316	336
Grossmont	68	392	460	80	426	506	25	466	491
Hartnell	33	145	178	38	187	225	22	220	242
Imperial Valley	7	136	143	3	186	189	7	148	155
Indian Valley	0	1	1	0	0	0	0	0	0
Irvine Valley	24	212	236	23	226	249	14	231	245
Lake Tahoe	4	31	35	18	36	54	4	22	26
Laney	26	134	160	27	147	174	19	167	186
Las Positas	27	77	104	62	87	149	16	121	137
Lassen	9	26	35	5	31	36	3	34	37
Long Beach City	52	345	397	48	366	414	20	398	418
Los Angeles City	23	173	196	24	203	227	14	230	244
Los Angeles Harbor	20	147	167	23	170	193	20	159	179
Los Angeles Metro (defunct)	0	0	0	0	0	0	0	1	1
Los Angeles Mission	4	67	71	5	83	88	6	89	95
Los Angeles Pierce	21	361	382	35	389	424	57	398	455
Los Angeles Southwest	10	69	79	10	94	104	8	82	90
Los Angeles Trade-Tech	23	101	124	19	108	127	11	121	132
Los Angeles Valley	23	400	423	30	378	408	45	353	398
Los Medanos	24	77	101	20	78	98	16	80	96
Marin	22	116	138	24	126	150	13	99	112

Table 69 (continued)

Total Lower and Upper Division Undergraduate Transfers from California Community Colleges,
Fall 1989 to Fall 2000

College	1998			1999			2000		
	Lower Division	Upper Division	Total	Lower Division	Upper Division	Total	Lower Division	Upper Division	Total
Mendocino	7	71	78	9	78	87	5	64	69
Merced	72	176	248	60	177	237	28	227	255
Merritt	10	46	56	18	42	60	3	59	62
Mira Costa	51	162	213	46	176	222	22	192	214
Mission	14	135	149	6	155	161	12	158	170
Modesto	124	279	403	116	419	535	88	417	505
Monterey Peninsula	24	147	171	29	129	158	16	138	154
Moorpark	57	369	426	69	397	466	58	367	425
Mt. San Antonio	112	487	599	143	480	623	59	548	607
Mt. San Jacinto	35	82	117	30	93	123	20	109	129
Napa Valley	31	139	170	21	107	128	15	142	157
North Peralta (defunct)	0	0	0	0	3	3	0	1	1
Ohlone	65	234	299	69	217	286	34	219	253
Orange Coast	98	654	752	79	681	760	34	738	772
Oxnard	9	102	111	12	110	122	16	94	110
Palo Verde	0	5	5	1	1	2	1	6	7
Palomar	133	408	541	104	463	567	57	468	525
Pasadena City	85	479	564	82	487	569	49	533	582
Porterville	18	68	86	22	91	113	9	76	85
Redwoods	61	235	296	38	211	249	24	204	228
Reedley (formerly Kings River)	72	172	244	66	218	284	41	246	287
Rio Hondo	38	204	242	58	204	262	14	241	255
Riverside City	100	336	436	123	358	481	74	428	502
Sacramento City	86	439	525	79	452	531	60	398	458
Saddleback	60	392	452	58	393	451	44	408	452
San Bernardino Valley	47	191	238	64	189	253	29	243	272
San Diego City	22	140	162	22	164	186	8	214	222
San Diego Evening	0	0	0	0	0	0	0	1	1
San Diego Mesa	70	302	372	48	330	378	34	460	494
San Diego Miramar	27	99	126	42	166	208	4	75	79
San Joaquin Delta	122	404	526	105	405	510	86	508	594
San Jose City	15	171	186	20	135	155	6	142	148
San Mateo	47	263	310	36	248	284	30	233	263
Santa Ana (Rancho Santiago)	16	422	438	25	449	474	10	452	462
Santa Barbara	35	229	264	42	232	274	22	245	267
Santa Monica	42	442	484	82	531	613	66	485	551
Santa Rosa	95	435	530	104	547	651	34	569	603
Santiago Canyon	4	72	76	3	57	60	7	35	42
Sequoias	76	248	324	76	297	373	45	283	328
Shasta	45	263	308	29	200	229	27	234	261
Sierra	91	504	595	96	538	634	62	522	584
Siskiyou	9	33	42	7	29	36	4	39	43
Skyline	29	213	242	23	228	251	15	222	237
Solano	48	197	245	41	202	243	38	187	225
Southwestern	45	286	331	43	266	309	18	338	356
Taft	8	21	29	16	20	36	6	23	29
Ventura	35	271	306	37	306	343	46	348	394
Victor Valley	35	102	137	36	116	152	25	133	158
Vista	3	30	33	8	30	38	8	28	36
West Hills	17	39	56	16	47	63	17	59	76
West Los Angeles	15	118	133	14	114	128	18	108	126
West Valley	52	356	408	69	346	415	29	333	362
Woodland Ctr of Yuba	0	0	0	1	0	1	1	1	2
Yuba	29	180	209	23	182	205	23	188	211
Totals	4,606	24,236	28,842	4,737	25,732	30,469	3,029	27,155	30,184

Note: This table does not include Summer Arts, Statewide Nursing, International Programs, or CalStateTEACH. Beginning 1998-1999, Statewide Nursing is included in the enrollment for Dominguez Hills.

See the CSU Analytic Studies website at www.calstate.edu/AS/stat_reports/2000-2001/FCCCT00TOC.shtml for additional information on community college transfers.

Table 70

Total Lower and Upper Division Transfers from California Community Colleges,
by CSU Campus, Fall 1989 to Fall 2000

Campus	1989			1990			1991			1992		
	Lower Division	Upper Division	Total	Lower Division	Upper Division	Total	Lower Division	Upper Division	Total	Lower Division	Upper Division	Total
Bakersfield	217	203	420	246	187	433	209	202	411	223	255	478
Chico	649	957	1,606	537	950	1,487	531	989	1,520	479	1,118	1,597
Dominguez Hills	233	598	831	288	592	880	265	697	962	235	713	948
Fresno	658	1,007	1,665	552	1,067	1,619	445	1,200	1,645	491	1,026	1,517
Fullerton	1,079	976	2,055	1,017	966	1,983	1,029	1,115	2,144	952	1,275	2,227
Hayward	547	500	1,047	593	511	1,104	519	613	1,132	485	721	1,206
Humboldt	373	309	682	373	300	673	324	299	623	294	407	701
Long Beach	514	1,572	2,086	494	1,930	2,424	360	1,814	2,174	268	1,816	2,084
Los Angeles	410	764	1,174	478	834	1,312	429	811	1,240	331	488	819
Maritime Academy	0	0	0	0	0	0	0	0	0	0	0	0
Monterey Bay	0	0	0	0	0	0	0	0	0	0	0	0
Northridge	534	1,415	1,949	608	1,658	2,266	613	1,593	2,206	620	1,638	2,258
Pomona	464	760	1,224	436	651	1,087	346	621	967	521	589	1,110
Sacramento	596	2,101	2,697	543	2,431	2,974	356	2,414	2,770	279	2,020	2,299
San Bernardino	473	686	1,159	532	736	1,268	507	740	1,247	419	806	1,225
San Diego	512	1,976	2,488	633	1,955	2,588	698	1,877	2,575	557	1,788	2,345
San Francisco	333	1,787	2,120	269	1,707	1,976	90	1,509	1,599	68	1,849	1,917
San Jose	1,093	1,505	2,598	1,115	1,459	2,574	1,088	1,473	2,561	1,078	1,542	2,620
San Luis Obispo	596	516	1,112	411	519	930	444	629	1,073	450	524	974
San Marcos	0	0	0	20	282	302	85	261	346	122	430	552
Sonoma	182	632	814	164	752	916	108	648	756	80	655	735
Stanislaus	173	431	604	289	285	574	190	416	606	213	550	763
Totals	9,636	18,695	28,331	9,598	19,772	29,370	8,636	19,921	28,557	8,165	20,210	28,375

Campus	1993			1994			1995			1996		
	Lower Division	Upper Division	Total	Lower Division	Upper Division	Total	Lower Division	Upper Division	Total	Lower Division	Upper Division	Total
Bakersfield	246	254	500	181	274	455	243	293	536	257	318	575
Chico	396	1,142	1,538	410	1,189	1,599	312	1,123	1,435	296	1,142	1,438
Dominguez Hills	174	622	796	179	685	864	378	576	954	146	891	1,037
Fresno	455	1,064	1,519	389	1,115	1,504	415	1,073	1,488	433	1,027	1,460
Fullerton	698	1,301	1,999	712	1,529	2,241	944	1,291	2,235	739	1,726	2,465
Hayward	516	683	1,199	119	1,201	1,320	221	1,098	1,319	419	920	1,339
Humboldt	99	556	655	112	718	830	153	578	731	151	621	772
Long Beach	236	1,861	2,097	359	1,881	2,240	266	2,053	2,319	275	2,318	2,593
Los Angeles	249	638	887	309	702	1,011	319	785	1,104	324	880	1,204
Maritime Academy	0	0	0	0	0	0	0	0	0	31	0	31
Monterey Bay	0	0	0	0	0	0	91	240	331	85	195	280
Northridge	1,065	1,225	2,290	391	1,433	1,824	983	1,576	2,559	1,091	1,714	2,805
Pomona	487	805	1,292	496	627	1,123	538	672	1,210	535	577	1,112
Sacramento	376	2,214	2,590	323	2,348	2,671	330	2,262	2,592	367	2,229	2,596
San Bernardino	440	790	1,230	294	862	1,156	316	917	1,233	400	736	1,136
San Diego	566	1,803	2,369	726	2,136	2,862	788	2,205	2,993	617	2,207	2,824
San Francisco	204	2,088	2,292	252	2,447	2,699	230	2,424	2,654	220	2,342	2,562
San Jose	1,071	2,081	3,152	952	1,750	2,702	442	2,148	2,590	356	2,280	2,636
San Luis Obispo	136	963	1,099	297	873	1,170	354	894	1,248	300	819	1,119
San Marcos	178	379	557	194	438	632	192	595	787	253	534	787
Sonoma	196	617	813	83	735	818	244	576	820	219	626	845
Stanislaus	276	414	690	287	411	698	268	479	747	251	516	767
Totals	8,064	21,500	29,564	7,065	23,354	30,419	8,027	23,858	31,885	7,765	24,618	32,383

Table 70 (continued)

**Total Lower and Upper Division Transfers from California Community Colleges,
by CSU Campus, Fall 1989 to Fall 2000**

Campus	1997			1998			1999			2000		
	Lower Division	Upper Division	Total	Lower Division	Upper Division	Total	Lower Division	Upper Division	Total	Lower Division	Upper Division	Total
Bakersfield	201	305	506	148	283	431	225	360	585	109	510	619
Chico	298	1,182	1,480	282	1,238	1,520	203	1,140	1,343	317	1,218	1,535
Dominguez Hills	139	892	1,031	81	745	826	83	969	1,052	139	958	1,097
Fresno	462	1,030	1,492	389	935	1,324	353	1,112	1,465	227	1,183	1,410
Fullerton	241	2,129	2,370	145	2,450	2,595	167	2,541	2,708	126	2,470	2,596
Hayward	345	851	1,196	245	730	975	301	756	1,057	101	949	1,050
Humboldt	143	557	700	157	513	670	124	586	710	96	484	580
Long Beach	332	1,829	2,161	313	1,968	2,281	365	2,223	2,588	160	2,283	2,443
Los Angeles	113	1,142	1,255	253	751	1,004	216	856	1,072	78	990	1,068
Maritime Academy	26	7	33	29	13	42	27	4	31	29	9	38
Monterey Bay	54	149	203	90	213	303	92	207	299	60	263	323
Northridge	334	2,299	2,633	33	2,134	2,167	181	2,327	2,508	337	2,429	2,766
Pomona	192	980	1,172	196	941	1,137	309	812	1,121	122	959	1,081
Sacramento	325	2,065	2,390	343	2,081	2,424	356	2,219	2,575	331	2,320	2,651
San Bernardino	309	920	1,229	272	855	1,127	264	924	1,188	168	1,100	1,268
San Diego	506	1,958	2,464	643	1,895	2,538	344	2,052	2,396	61	2,255	2,316
San Francisco	175	1,790	1,965	206	2,177	2,383	199	2,205	2,404	172	1,971	2,143
San Jose	287	2,473	2,760	188	2,309	2,497	238	2,086	2,324	157	2,031	2,188
San Luis Obispo	171	637	808	57	566	623	139	644	783	13	685	698
San Marcos	260	394	654	175	495	670	208	582	790	73	702	775
Sonoma	160	547	707	143	512	655	149	566	715	49	681	730
Stanislaus	209	555	764	218	432	650	194	561	755	104	705	809
Totals	5,282	24,691	29,973	4,606	24,236	28,842	4,737	25,732	30,469	3,029	27,155	30,184

Note: See the CSU Analytic Studies website at www.calstate.edu/AS/stat_reports/2000-2001/FCCCT00TOC.shtml for additional information on community college transfers.

Table 71

Total Undergraduate Transfers from California Community Colleges by Ethnicity, Fall 2000 Profile

College	African American	American Indian	Asian American	Filipino	Mexican American	Other Latino	Pacific Islander	White Non-Latino	Unknown	Non-resident Alien	Total
Alameda	20	2	38	3	3	4	1	14	12	5	102
Allan Hancock	5	2	4	5	39	9	0	96	25	1	186
American River	20	6	34	16	45	22	5	409	109	11	677
American River - Placerville	0	0	0	0	0	0	0	1	0	0	1
Antelope Valley	34	1	8	6	28	14	2	129	44	3	269
Bakersfield	22	10	13	10	96	23	2	252	48	6	482
Barstow	2	1	2	0	2	9	1	15	3	0	35
Butte	11	8	16	3	31	9	0	304	70	14	466
Cabrillo	5	2	7	2	29	7	1	120	45	4	222
Canada	3	0	3	0	5	4	0	23	10	5	53
Canyons	8	1	7	8	23	12	0	165	46	3	273
Cerritos	30	4	56	19	142	61	3	64	35	9	423
Cerro Coso	1	2	0	2	2	0	0	27	5	0	39
Chabot	27	3	65	30	31	18	5	106	87	23	395
Chaffey	27	2	13	5	84	25	0	184	51	23	414
Citrus	10	5	16	8	68	16	3	99	37	20	282
City College of San Francisco	28	1	277	38	29	43	4	111	86	75	692
Coastline	4	0	15	2	2	2	0	22	7	0	54
Columbia	0	1	2	1	4	0	0	43	15	1	67
Compton	42	0	0	0	14	7	0	1	5	0	69
Contra Costa	31	0	22	7	13	3	1	21	29	6	133
Copper Mountain	0	0	0	1	1	0	0	3	0	0	5
Cosumnes River	19	9	46	10	20	6	3	167	56	4	340
Crafton Hills	4	1	4	1	12	6	0	75	20	2	125
Cuesta	6	6	4	6	19	12	1	252	83	6	395
Cuyamaca	4	2	2	3	8	3	0	64	19	2	107
Cypress	15	3	81	15	45	21	4	137	50	6	377
De Anza	21	1	219	46	45	31	3	206	125	54	751
Desert	5	2	2	0	37	6	0	74	19	7	152
Diablo Valley	18	3	71	45	40	32	3	301	160	25	698
East Los Angeles	2	2	33	1	219	44	1	6	19	23	350
El Camino	76	3	67	27	91	61	4	167	56	22	574
Evergreen Valley	5	0	72	17	35	7	0	14	19	2	171
Feather River	1	2	0	0	0	0	0	18	17	0	38
Foothill	4	2	34	4	14	6	0	79	41	44	228
Fresno	40	9	59	7	159	27	4	253	95	21	674
Fullerton	16	4	78	16	101	34	2	311	79	13	654
Gavilan	1	0	6	4	33	5	0	38	12	0	99
Glendale	1	2	33	13	40	32	4	120	81	21	347
Golden West	5	1	99	7	24	11	2	150	29	8	336
Grossmont	13	2	19	13	31	15	8	262	93	35	491
Hartnell	5	1	5	12	110	13	2	58	29	7	242
Imperial Valley	3	0	2	0	101	9	0	17	20	3	155
Irvine Valley	7	1	45	13	16	6	1	109	29	18	245
Lake Tahoe	0	0	1	0	0	1	0	19	5	0	26
Laney	34	3	63	4	11	10	1	20	30	10	186
Las Positas	1	2	6	1	7	5	1	73	38	3	137
Lassen	4	2	0	1	2	0	0	23	2	3	37
Long Beach City	47	3	56	17	77	23	2	121	59	13	418
Los Angeles City	30	1	43	6	41	68	1	23	22	9	244
Los Angeles Harbor	20	3	10	6	48	18	0	44	22	8	179
Los Angeles Metro (defunct)	0	0	0	0	0	0	0	1	0	0	1
Los Angeles Mission	5	2	2	2	43	10	0	18	10	3	95
Los Angeles Pierce	13	4	46	28	38	42	2	190	79	13	455
Los Angeles Southwest	72	0	0	0	5	3	0	2	8	0	90
Los Angeles Trade-Tech	32	0	9	2	46	34	0	1	6	2	132
Los Angeles Valley	28	2	26	19	62	47	2	122	82	8	398
Los Medanos	10	0	2	2	13	4	0	46	19	0	96
Marin	5	0	13	1	6	4	0	61	17	5	112
Mendocino	1	1	2	0	4	2	0	45	14	0	69

Table 71 (continued)

Total Undergraduate Transfers from California Community Colleges by Ethnicity, Fall 2000 Profile

College	African American	American Indian	Asian American	Filipino	Mexican American	Other Latino	Pacific Islander	White Non-Latino	Unknown	Non-resident Alien	Total
Merced	6	1	22	7	59	12	1	111	32	4	255
Merritt	20	2	10	0	2	2	0	11	11	4	62
Mira Costa	5	1	2	5	32	11	1	128	23	6	214
Mission	7	1	75	7	17	7	0	22	19	15	170
Modesto	11	5	40	3	73	11	4	268	88	2	505
Monterey Peninsula	6	1	9	2	6	9	1	69	36	15	154
Moorpark	6	5	26	7	28	20	5	237	82	9	425
Mt. San Antonio	24	1	121	37	132	46	3	152	62	29	607
Mt. San Jacinto	2	0	0	2	22	10	2	70	21	0	129
Napa Valley	7	1	4	15	12	7	0	87	24	0	157
North Peralta (defunct)	0	0	0	0	0	0	0	0	1	0	1
Ohlone	7	0	51	13	23	11	3	77	57	11	253
Orange Coast	2	5	196	8	59	25	6	343	98	30	772
Oxnard	2	0	4	13	51	9	0	15	7	9	110
Palo Verde	1	0	0	0	4	1	0	1	0	0	7
Palomar	6	6	20	22	62	16	2	303	69	19	525
Pasadena City	10	1	194	20	82	32	1	97	73	72	582
Porterville	2	1	1	2	26	1	0	37	15	0	85
Redwoods	2	16	6	3	10	7	0	150	32	2	228
Reedley (formerly Kings River)	9	5	10	1	80	4	0	116	59	3	287
Rio Hondo	6	0	23	4	135	22	3	17	20	25	255
Riverside City	30	5	21	10	77	30	3	233	78	15	502
Sacramento City	32	6	106	12	39	18	2	157	63	23	458
Saddleback	2	4	26	9	44	25	1	272	57	12	452
San Bernardino Valley	44	2	21	8	71	15	2	69	39	1	272
San Diego City	31	2	15	13	33	6	1	73	36	12	222
San Diego Evening	0	0	0	0	0	0	0	1	0	0	1
San Diego Mesa	15	5	38	33	34	25	4	234	92	14	494
San Diego Miramar	3	2	9	17	3	4	1	26	11	3	79
San Joaquin Delta	33	5	65	36	82	21	1	255	89	7	594
San Jose City	10	0	46	2	18	7	0	37	22	6	148
San Mateo	4	0	48	19	10	14	6	97	47	18	263
Santa Ana (Rancho Santiago)	9	3	106	6	123	35	0	95	50	35	462
Santa Barbara	7	3	13	0	27	10	0	149	37	21	267
Santa Monica	42	3	56	7	48	49	2	161	85	98	551
Santa Rosa	13	5	17	6	36	15	4	377	123	7	603
Santiago Canyon	1	0	3	0	2	2	0	29	5	0	42
Sequoias	6	3	10	4	72	15	0	160	52	6	328
Shasta	2	9	4	0	7	6	0	202	31	0	261
Sierra	4	7	19	5	28	15	2	396	107	1	584
Siskiyou	3	2	1	0	2	2	0	27	4	2	43
Skyline	6	1	44	49	13	28	1	52	42	1	237
Solano	19	3	13	31	11	13	3	94	38	0	225
Southwestern	16	1	10	57	147	16	1	51	50	7	356
Taft	0	0	0	0	4	0	2	19	1	3	29
Ventura	14	3	14	11	85	22	2	183	53	7	394
Victor Valley	12	5	0	5	19	9	0	88	20	0	158
Vista	10	0	3	1	1	0	0	8	12	1	36
West Hills	6	1	5	3	18	2	0	30	11	0	76
West Los Angeles	60	1	7	1	9	12	1	13	17	5	126
West Valley	5	2	49	5	26	13	1	192	62	7	362
Woodland Ctr of Yuba	0	0	0	0	2	0	0	0	0	0	2
Yuba	7	5	44	1	26	3	0	104	20	1	211
Totals	1,490	270	3,485	1,037	4,326	1,641	151	12,091	4,516	1,177	30,184

Note: This table does not include Summer Arts, International Programs, or CalStateTEACH.

Beginning 1998-1999, Statewide Nursing is included in the enrollment for Dominguez Hills.

See the CSU Analytic Studies website at www.calstate.edu/AS/stat_reports/2000-2001/FCCCT00TOC.shtml for additional information on community college transfers.

Table 72a

**Disposition of Applications for Admission by Ethnic Group
First-Time Freshmen, from 1985-1986**

College Year	African American	American Indian	Asian American	Filipino	Mexican American	Other Latino	Pacific Islanders	White Non-Latino	No Response	Nonresident Aliens	Total
Applications Received (including duplicates)											
1985-86	5,897	740	10,425	2,252	6,176	2,153	265	46,163	5,159	3,906	83,136
1986-87	6,194	649	11,740	2,729	6,463	2,727	338	50,046	4,799	3,415	89,100
1987-88	7,537	771	14,149	3,315	8,643	3,330	472	57,652	5,853	4,856	106,578
1988-89	7,001	751	15,009	3,794	9,530	3,073	446	56,089	7,784	4,877	108,354
1989-90	7,644	855	16,437	4,350	12,308	3,459	402	53,745	6,891	5,403	111,494
1990-91	7,732	811	17,651	4,867	13,421	3,981	439	46,928	7,060	5,380	108,270
1991-92	8,135	893	16,674	4,485	14,543	4,671	411	40,277	6,409	5,245	101,743
1992-93	7,441	840	15,994	4,128	14,099	4,640	468	36,225	6,342	5,008	95,185
1993-94	7,348	848	14,992	3,878	14,285	4,504	453	31,853	6,009	4,455	88,625
1994-95	9,718	1,041	17,842	4,651	19,839	6,298	508	33,472	6,805	5,410	105,584
1995-96	10,715	1,343	16,886	5,419	22,014	7,242	641	36,822	8,629	5,597	115,308
1996-97	12,078	1,189	16,551	5,974	22,620	7,371	649	38,580	10,557	4,879	120,448
1997-98*	12,671	1,207	17,411	6,059	23,478	7,332	681	41,442	13,084	5,403	128,408
1998-99	12,582	1,150	19,692	7,059	25,404	8,016	713	46,449	16,459	5,190	142,714
1999-00	13,954	1,232	22,301	7,730	27,354	8,998	855	52,356	20,850	5,406	161,036
2000-01	14,614	1,210	25,378	8,265	29,771	10,561	998	60,736	19,958	6,246	177,737
Applicants Unaccommodated											
1985-86	58	14	482	56	106	46	6	3,320	379	125	4,592
1986-87	167	21	693	102	145	66	14	4,493	199	110	6,010
1987-88	294	21	891	73	206	94	17	5,146	262	171	7,175
1988-89	245	22	908	75	218	81	39	4,677	430	178	6,873
1989-90	361	14	1,057	182	422	113	14	4,930	555	169	7,817
1990-91	288	26	1,273	210	553	179	18	4,881	665	228	8,321
1991-92	290	25	1,073	273	490	155	17	3,730	595	170	6,818
1992-93	250	27	1,006	247	485	177	18	3,323	546	191	6,270
1993-94	317	27	739	165	582	176	16	2,090	308	65	4,485
1994-95	438	50	847	225	754	221	17	2,297	381	56	5,286
1995-96	440	46	797	219	753	229	21	2,416	395	88	5,404
1996-97	416	52	753	229	650	187	16	2,661	566	98	5,628
1997-98*	594	63	1,304	387	958	284	34	4,984	1,825	232	10,665
1998-99	808	100	1,344	478	1,512	435	60	5,263	3,068	352	13,420
1999-00	707	101	1,548	449	1,385	546	72	4,447	4,364	283	13,902
2000-01	531	78	1,693	453	1,478	590	55	5,088	2,681	349	12,996
Applicants Accommodated											
1985-86	5,839	726	9,943	2,196	6,070	2,107	259	42,843	4,780	3,781	78,544
1986-87	6,027	628	11,047	2,627	6,318	2,661	324	45,553	4,600	3,305	83,090
1987-88	7,243	750	13,258	3,242	8,437	3,236	455	52,506	5,591	4,685	99,403
1988-89	6,756	729	14,101	3,719	9,312	2,992	407	57,412	7,354	4,679	101,481
1989-90	7,283	841	15,380	4,168	11,886	3,346	388	48,815	6,336	5,234	103,677
1990-91	7,444	785	16,378	4,657	12,868	3,802	421	42,047	6,395	5,152	99,949
1991-92	7,845	868	15,601	4,212	14,053	4,516	394	36,547	5,814	5,075	94,925
1992-93	7,191	813	14,988	3,881	13,614	4,463	450	32,902	5,796	4,817	88,915
1993-94	7,031	821	14,253	3,713	13,703	4,328	437	29,763	5,701	4,390	84,140
1994-95	9,280	991	16,995	4,426	19,085	6,077	491	31,175	6,424	5,354	100,298
1995-96	10,275	1,297	16,089	5,200	21,261	7,013	620	34,406	8,234	5,509	109,904
1996-97	11,662	1,137	15,798	5,745	21,970	7,184	633	35,919	9,991	4,781	114,820
1997-98*	12,077	1,144	16,107	5,672	22,520	7,048	647	36,458	11,259	4,811	117,743
1998-99	11,774	1,050	18,348	6,581	23,892	7,581	653	41,186	13,391	4,838	129,294
1999-00	13,247	1,131	20,753	7,281	25,969	8,452	783	47,909	16,486	5,123	147,134
2000-01	14,083	1,132	23,685	7,812	28,293	9,971	943	55,648	17,277	5,897	164,741

*Data for 1997-1998 through 2000-2001 have been updated to reflect current information.

Table 72a (continued)

**Disposition of Applications for Admission by Ethnic Group
First-Time Freshmen, from 1985-1986**

College Year	African American	American Indian	Asian American	Filipino	Mexican American	Other Latino	Pacific Islanders	White Non-Latino	No Response	Nonresident Aliens	Total
Ratio of Applicants Accommodated to Applications Received											
1985-86	.99	.98	.95	.98	.98	.98	.98	.93	.93	.97	.94
1986-87	.97	.97	.94	.96	.98	.98	.96	.91	.96	.97	.93
1987-88	.96	.97	.94	.98	.98	.97	.96	.91	.96	.96	.93
1988-89	.97	.97	.94	.98	.98	.97	.91	.92	.94	.96	.94
1989-90	.95	.98	.94	.96	.97	.97	.97	.91	.92	.97	.93
1990-91	.96	.97	.93	.96	.96	.96	.96	.90	.91	.96	.92
1991-92	.96	.97	.94	.94	.97	.97	.96	.91	.91	.97	.93
1992-93	.97	.97	.94	.94	.97	.96	.96	.91	.91	.96	.93
1993-94	.96	.97	.95	.96	.96	.96	.96	.93	.95	.99	.95
1994-95	.95	.95	.95	.95	.96	.96	.97	.93	.94	.99	.95
1995-96	.96	.97	.95	.96	.97	.97	.97	.93	.95	.98	.95
1996-97	.97	.96	.95	.96	.97	.97	.98	.93	.95	.98	.95
1997-98*	.95	.95	.93	.94	.96	.96	.95	.88	.86	.95	.92
1998-99	.94	.91	.93	.93	.94	.95	.92	.89	.81	.93	.91
1999-00	.95	.92	.93	.94	.95	.94	.92	.92	.79	.95	.91
2000-01	.96	.94	.93	.95	.95	.94	.94	.92	.87	.94	.93
Incomplete Applications											
1985-86	1,654	170	2,388	517	1,482	561	56	8,783	1,104	1,602	18,317
1986-87	1,821	195	2,857	662	1,726	746	100	10,062	1,387	1,375	20,931
1987-88	1,985	183	2,875	609	1,941	794	93	8,590	1,312	1,887	20,269
1988-89	1,692	166	2,797	611	2,054	642	82	7,098	1,337	1,766	18,245
1989-90	2,020	170	2,869	611	2,686	779	91	6,863	1,379	1,941	19,409
1990-91	2,095	137	3,250	788	2,991	917	83	6,133	1,379	2,019	19,792
1991-92	2,316	180	3,391	702	3,384	1,083	66	4,936	1,253	2,092	19,403
1992-93	2,162	189	3,270	671	3,248	1,115	114	5,237	1,267	2,142	19,415
1993-94	2,057	174	2,909	559	2,895	1,091	100	4,926	1,046	1,813	17,570
1994-95	2,876	219	3,635	791	4,697	1,565	113	5,609	1,352	2,233	23,090
1995-96	3,196	282	3,613	929	5,140	1,808	157	5,607	1,636	2,433	24,801
1996-97	3,606	261	3,556	1,029	5,248	1,851	138	6,022	2,095	2,253	26,059
1997-98*	3,875	336	4,364	1,185	5,784	1,893	171	9,840	3,623	2,332	33,403
1998-99	3,872	319	5,035	1,444	6,603	2,086	207	10,879	5,224	2,337	38,006
1999-00	4,707	347	5,860	1,668	7,213	2,521	254	11,549	7,542	2,280	43,941
2000-01	5,045	286	6,028	1,628	8,521	2,828	263	10,328	5,311	2,705	42,943
Ratio of Incomplete Applications to Applicants Accommodated											
1985-86	.28	.23	.24	.24	.24	.27	.22	.21	.23	.42	.23
1986-87	.30	.31	.26	.25	.27	.28	.31	.22	.30	.42	.25
1987-88	.27	.24	.22	.19	.23	.25	.20	.16	.23	.40	.20
1988-89	.25	.23	.20	.16	.22	.21	.20	.14	.18	.38	.18
1989-90	.28	.20	.19	.15	.23	.23	.23	.14	.22	.37	.19
1990-91	.28	.17	.20	.17	.23	.24	.20	.15	.22	.39	.20
1991-92	.30	.21	.22	.17	.24	.24	.17	.14	.22	.41	.20
1992-93	.30	.23	.22	.17	.24	.25	.25	.16	.22	.44	.22
1993-94	.29	.21	.20	.15	.21	.25	.23	.17	.18	.41	.21
1994-95	.31	.22	.21	.18	.25	.26	.23	.18	.21	.42	.23
1995-96	.31	.22	.22	.18	.24	.26	.25	.16	.20	.44	.23
1996-97	.31	.23	.23	.18	.24	.26	.22	.17	.21	.47	.23
1997-98*	.32	.29	.27	.21	.26	.27	.26	.27	.32	.48	.28
1998-99	.33	.30	.27	.22	.28	.28	.32	.26	.39	.48	.29
1999-00	.36	.31	.28	.23	.28	.30	.32	.24	.46	.45	.30
2000-01	.36	.25	.25	.21	.30	.28	.28	.19	.31	.46	.26

*Data for 1997-1998 through 2000-2001 have been updated to reflect current information.

Table 72a (continued)

**Disposition of Applications for Admission by Ethnic Group
First-Time Freshmen, from 1985-1986**

College Year	African American	American Indian	Asian American	Filipino	Mexican American	Other Latino	Pacific Islanders	White Non-Latino	No Response	Nonresident Aliens	Total
Denied Applicants											
1985-86	1,283	118	1,441	292	752	298	43	4,481	603	874	10,185
1986-87	1,351	87	1,551	346	806	356	43	4,845	587	687	10,659
1987-88	1,615	105	1,800	443	1,124	444	74	5,651	675	959	12,890
1988-89	1,128	54	1,219	270	799	266	39	3,041	554	856	8,226
1989-90	898	63	1,192	316	896	280	44	2,615	445	1,007	7,756
1990-91	936	60	1,199	326	1,062	349	40	2,305	419	1,042	7,738
1991-92	1,025	74	1,205	297	1,263	395	48	2,147	345	1,057	7,856
1992-93	878	53	1,110	273	1,348	416	34	1,761	393	886	7,152
1993-94	827	61	1,041	243	1,164	356	45	1,775	403	733	6,648
1994-95	1,237	70	1,372	290	2,039	616	47	1,603	508	866	8,648
1995-96	1,868	141	1,463	386	2,823	882	62	1,738	659	1,030	11,060
1996-97	1,970	117	1,292	449	2,727	920	76	2,068	788	778	11,185
1997-98*	2,298	154	1,445	499	2,863	941	76	2,975	1,140	853	13,244
1998-99	2,179	135	1,715	634	2,874	1,017	72	2,886	1,423	886	13,821
1999-00	2,703	134	2,255	913	3,767	1,280	115	5,113	1,918	935	19,133
2000-01	2,756	207	3,485	1,109	4,216	1,704	161	9,365	2,856	1,099	26,958
Ratio of Denied Applicants to Applicants Accommodated											
1985-86	.22	.16	.14	.13	.12	.14	.17	.10	.13	.23	.13
1986-87	.22	.14	.14	.13	.13	.13	.13	.11	.13	.21	.13
1987-88	.22	.14	.14	.14	.13	.14	.16	.11	.12	.20	.13
1988-89	.17	.07	.09	.07	.09	.09	.10	.06	.08	.18	.08
1989-90	.12	.07	.08	.08	.08	.08	.11	.05	.07	.19	.07
1990-91	.13	.08	.07	.07	.08	.09	.10	.05	.07	.20	.08
1991-92	.13	.09	.08	.07	.09	.09	.12	.06	.06	.21	.08
1992-93	.12	.07	.07	.07	.10	.09	.08	.05	.07	.18	.08
1993-94	.12	.07	.07	.07	.08	.08	.10	.06	.07	.17	.08
1994-95	.13	.07	.08	.07	.11	.10	.10	.05	.08	.16	.09
1995-96	.18	.11	.09	.07	.13	.13	.10	.05	.08	.19	.10
1996-97	.17	.10	.08	.08	.12	.13	.12	.06	.08	.16	.10
1997-98*	.19	.13	.09	.09	.13	.13	.12	.08	.10	.18	.11
1998-99	.19	.13	.09	.10	.12	.13	.11	.07	.11	.18	.11
1999-00	.20	.12	.11	.13	.15	.15	.15	.11	.12	.18	.13
2000-01	.20	.18	.15	.14	.15	.17	.17	.17	.17	.19	.16
Admitted Applicants											
1985-86	2,902	438	6,114	1,387	3,836	1,248	160	29,579	3,073	1,305	50,042
1986-87	2,855	346	6,639	1,619	3,786	1,559	181	30,646	2,626	1,243	51,500
1987-88	3,643	462	8,583	2,190	5,372	1,998	288	38,265	3,604	1,839	66,244
1988-89	3,936	509	10,085	2,838	6,459	2,084	286	41,273	5,463	2,077	75,010
1989-90	4,365	608	11,319	3,241	8,304	2,287	253	39,337	4,512	2,286	76,512
1990-91	4,413	588	11,929	3,543	8,815	2,536	298	33,609	4,597	2,091	72,419
1991-92	4,504	614	11,005	3,213	9,406	3,038	280	29,464	4,216	1,926	67,666
1992-93	4,151	571	10,608	2,937	9,018	2,932	302	25,904	4,136	1,789	62,348
1993-94	4,147	586	10,303	2,911	9,644	2,881	292	23,062	4,252	1,844	59,922
1994-95	5,167	702	11,988	3,345	12,349	3,896	331	23,963	4,564	2,255	68,560
1995-96	5,202	874	11,013	3,885	13,297	4,322	401	27,048	5,938	2,046	74,026
1996-97	6,086	759	10,949	4,267	13,995	4,413	419	27,828	7,107	1,750	77,573
1997-98*	6,310	702	11,425	4,342	14,482	4,373	425	28,372	8,235	1,723	80,389
1998-99	6,203	670	12,608	4,916	15,277	4,701	425	31,969	9,599	1,838	88,206
1999-00	6,304	726	13,898	5,086	15,845	5,009	472	34,924	11,168	2,018	95,450
2000-01	6,671	711	15,701	5,484	16,725	5,912	566	40,851	11,679	2,267	106,567

*Data for 1997-1998 through 2000-2001 have been updated to reflect current information.

Table 72a (continued)

Disposition of Applications for Admission by Ethnic Group
First-Time Freshmen, from 1985-1986

College Year	African American	American Indian	Asian American	Filipino	Mexican American	Other Latino	Pacific Islanders	White Non-Latino	No Response	Nonresident Aliens	Total
Ratio of Admitted Applicants to Applicants Accommodated											
1985-86	.50	.60	.61	.63	.63	.59	.62	.69	.64	.35	.64
1986-87	.47	.55	.60	.62	.60	.59	.56	.67	.57	.38	.62
1987-88	.50	.62	.65	.68	.64	.62	.63	.73	.64	.39	.67
1988-89	.58	.70	.72	.76	.69	.70	.70	.80	.74	.44	.74
1989-90	.60	.72	.74	.78	.70	.68	.65	.81	.71	.44	.74
1990-91	.59	.75	.73	.76	.69	.67	.71	.80	.72	.41	.72
1991-92	.57	.71	.71	.76	.67	.67	.71	.81	.73	.38	.71
1992-93	.58	.70	.71	.76	.66	.66	.67	.79	.71	.37	.70
1993-94	.59	.71	.72	.78	.70	.67	.67	.77	.75	.42	.71
1994-95	.56	.71	.71	.76	.65	.64	.67	.77	.71	.42	.68
1995-96	.51	.67	.68	.75	.63	.62	.65	.79	.72	.37	.67
1996-97	.52	.67	.69	.74	.64	.61	.66	.77	.71	.37	.68
1997-98*	.52	.61	.71	.77	.64	.62	.66	.78	.73	.36	.68
1998-99	.53	.64	.69	.75	.64	.62	.65	.78	.72	.38	.68
1999-00	.48	.64	.67	.70	.61	.59	.60	.73	.68	.39	.65
2000-01	.47	.63	.66	.70	.59	.59	.60	.73	.68	.38	.65
Enrolled Applicants											
1985-86	1,857	269	3,548	850	2,481	801	103	17,176	1,571	789	29,445
1986-87	1,875	226	3,668	1,020	2,384	965	101	17,381	1,368	848	29,836
1987-88	2,037	247	4,110	1,136	2,982	1,070	140	18,480	1,418	921	32,541
1988-89	1,965	241	4,597	1,473	3,342	981	145	18,404	1,827	983	33,958
1989-90	2,138	289	4,949	1,669	3,942	1,005	118	16,531	1,928	1,014	33,583
1990-91	2,267	269	5,018	1,772	4,182	1,155	149	13,755	1,937	959	31,463
1991-92	2,192	255	4,520	1,452	4,252	1,327	115	11,579	1,766	793	28,251
1992-93	1,885	206	3,922	1,189	3,875	1,167	132	8,971	1,459	756	23,562
1993-94	1,814	238	3,816	1,186	4,210	1,208	107	8,157	1,566	811	23,113
1994-95	2,188	265	4,094	1,402	4,842	1,552	115	9,078	1,738	1,013	26,287
1995-96	2,282	349	3,997	1,693	5,318	1,796	156	10,180	2,272	711	28,754
1996-97	2,563	287	4,166	1,904	5,592	1,886	146	11,036	2,913	766	31,259
1997-98*	2,546	304	4,376	1,954	5,658	1,824	171	10,993	3,232	795	31,853
1998-99	2,264	260	4,642	2,096	5,738	1,836	172	12,137	3,579	822	33,546
1999-00	2,384	280	5,083	2,137	6,017	2,013	190	12,968	4,700	916	36,688
2000-01	2,510	275	5,472	2,195	6,289	2,266	214	14,452	4,288	951	38,912
Ratio of Enrolled Applicants to Admitted Applicants											
1985-86	.64	.61	.58	.61	.65	.64	.64	.58	.51	.60	.59
1986-87	.66	.65	.55	.63	.63	.62	.56	.57	.52	.68	.58
1987-88	.56	.53	.48	.52	.56	.54	.49	.48	.39	.50	.49
1988-89	.50	.47	.46	.52	.52	.47	.51	.45	.33	.47	.45
1989-90	.49	.48	.44	.51	.47	.44	.47	.42	.43	.44	.44
1990-91	.51	.46	.42	.50	.47	.46	.50	.41	.42	.46	.43
1991-92	.49	.42	.41	.45	.45	.44	.41	.39	.42	.41	.42
1992-93	.45	.36	.37	.40	.43	.40	.44	.35	.35	.42	.38
1993-94	.44	.41	.37	.41	.44	.42	.37	.35	.37	.44	.39
1994-95	.42	.38	.34	.42	.39	.40	.35	.38	.38	.45	.38
1995-96	.44	.40	.36	.44	.40	.42	.39	.38	.38	.35	.39
1996-97	.42	.38	.38	.45	.40	.43	.35	.40	.41	.44	.40
1997-98*	.40	.43	.38	.45	.39	.42	.40	.39	.39	.46	.40
1998-99	.36	.39	.37	.43	.38	.39	.40	.38	.37	.45	.38
1999-00	.38	.39	.37	.42	.38	.40	.40	.37	.42	.45	.38
2000-01	.38	.39	.35	.40	.38	.38	.38	.35	.37	.42	.37

*Data for 1997-1998 through 2000-2001 have been updated to reflect current information.

Table 72b

**Disposition of Unduplicated¹ Applications for Admission by Ethnic Group
First-Time Freshmen, from 1997-1998**

College Year	African American	American Indian	Asian American	Filipino	Mexican American	Other Latino	Pacific Islanders	White Non-Latino	No Response	Nonresident Aliens	Total
Applications Received (unduplicated)											
1997-98	6,202	755	10,554	3,985	12,699	4,181	430	26,614	8,138	4,267	77,825
1998-99	6,125	690	11,930	4,494	13,722	4,636	459	29,363	10,203	4,365	85,987
1999-00	6,427	719	12,887	4,616	14,223	4,852	503	31,518	11,864	4,514	92,123
2000-01	6,919	717	14,231	4,894	15,202	5,657	580	34,621	11,012	5,310	99,143
Applicants Unaccommodated											
1997-98	158	19	427	112	237	68	11	2,110	767	171	4,080
1998-99	254	39	426	145	434	144	27	2,098	1,590	271	5,428
1999-00	194	40	478	105	354	150	20	1,612	1,804	205	4,962
2000-01	101	23	483	110	304	138	20	1,674	873	260	3,986
Applicants Accommodated											
1997-98	6,044	736	10,127	3,873	12,462	4,113	419	24,504	7,371	4,096	73,745
1998-99	5,871	651	11,504	4,349	13,288	4,492	432	27,265	8,613	4,094	80,559
1999-00	6,233	679	12,409	4,511	13,869	4,702	483	29,906	10,060	4,309	87,161
2000-01	6,818	694	13,748	4,784	14,898	5,519	560	32,947	10,139	5,050	95,157
Ratio of Applicants Accommodated to Applications Received											
1997-98	.97	.97	.96	.97	.98	.98	.97	.92	.91	.96	.95
1998-99	.96	.94	.96	.97	.97	.97	.94	.93	.84	.94	.94
1999-00	.97	.94	.96	.98	.98	.97	.96	.95	.85	.95	.95
2000-01	.99	.97	.97	.98	.98	.98	.97	.95	.92	.95	.96
Incomplete Applications											
1997-98	1,263	149	1,687	456	1,918	671	81	4,500	1,599	1,862	14,186
1998-99	1,192	134	1,906	521	2,110	715	93	4,637	2,384	1,833	15,525
1999-00	1,427	149	2,119	540	2,213	824	100	4,602	3,203	1,779	16,956
2000-01	1,692	148	2,329	651	2,670	993	130	4,393	2,092	2,167	17,265
Ratio of Incomplete Applications to Applicants Accommodated											
1997-98	.21	.20	.17	.12	.15	.16	.19	.18	.22	.45	.19
1998-99	.20	.21	.17	.12	.16	.16	.22	.17	.28	.45	.19
1999-00	.23	.22	.17	.12	.16	.18	.21	.15	.32	.41	.19
2000-01	.25	.21	.17	.14	.18	.18	.23	.13	.21	.43	.18
Denied Applicants											
1997-98	861	85	694	301	1,242	425	44	1,618	598	709	6,577
1998-99	888	67	837	386	1,256	466	47	1,773	850	762	7,332
1999-00	972	51	1,014	443	1,517	550	58	2,338	813	777	8,533
2000-01	943	81	1,277	428	1,554	652	83	3,397	1,057	938	10,410
Ratio of Denied Applicants to Applicants Accommodated											
1997-98	.14	.12	.07	.08	.10	.10	.11	.07	.08	.17	.09
1998-99	.15	.10	.07	.09	.09	.10	.11	.07	.10	.19	.09
1999-00	.16	.08	.08	.10	.11	.12	.12	.08	.08	.18	.10
2000-01	.14	.12	.09	.09	.10	.12	.15	.10	.10	.19	.11

¹Unduplicated application counts are derived by counting multiple applications from individuals to CSU campuses within a given term only once.

Table 72b (continued)

**Disposition of Unduplicated¹ Applications for Admission by Ethnic Group
First-Time Freshmen, from 1997-1998**

College Year	African American	American Indian	Asian American	Filipino	Mexican American	Other Latino	Pacific Islanders	White Non-Latino	No Response	Nonresident Aliens	Total
Denied Eligible Applicants²											
1997-98	—	—	—	—	—	—	—	—	—	—	—
1998-99	—	—	—	—	—	—	—	—	—	—	—
1999-00	—	—	—	—	—	—	—	—	—	—	—
2000-01	10	16	349	71	119	63	10	1,284	320	16	2,258
Ratio of Denied Eligible Applicants to Total Denied Applicants²											
1997-98	—	—	—	—	—	—	—	—	—	—	—
1998-99	—	—	—	—	—	—	—	—	—	—	—
1999-00	—	—	—	—	—	—	—	—	—	—	—
2000-01	.01	.20	.27	.17	.08	.10	.12	.38	.30	.02	.22
Denied Ineligible Applicants²											
1997-98	—	—	—	—	—	—	—	—	—	—	—
1998-99	—	—	—	—	—	—	—	—	—	—	—
1999-00	—	—	—	—	—	—	—	—	—	—	—
2000-01	933	65	928	357	1,435	589	73	2,113	737	922	8,152
Ratio of Denied Ineligible Applicants to Total Denied Applicants²											
1997-98	—	—	—	—	—	—	—	—	—	—	—
1998-99	—	—	—	—	—	—	—	—	—	—	—
1999-00	—	—	—	—	—	—	—	—	—	—	—
2000-01	.99	.80	.73	.83	.92	.90	.88	.62	.70	.98	.78
Admitted Applicants											
1997-98	4,025	514	8,079	3,209	9,399	3,038	303	20,288	5,894	1,584	56,333
1998-99	3,950	474	9,044	3,554	10,093	3,353	312	22,535	6,862	1,662	61,839
1999-00	3,977	509	9,644	3,603	10,311	3,390	339	24,213	7,758	1,818	65,562
2000-01	4,250	488	10,562	3,799	10,869	3,968	364	26,719	7,820	2,055	70,894
Ratio of Admitted Applicants to Applicants Accommodated											
1997-98	.67	.70	.80	.83	.75	.74	.72	.83	.80	.39	.76
1998-99	.67	.73	.79	.82	.76	.75	.72	.83	.80	.41	.77
1999-00	.64	.75	.78	.80	.74	.72	.70	.81	.77	.42	.75
2000-01	.62	.70	.77	.79	.73	.72	.65	.81	.77	.41	.75
Enrolled Applicants											
1997-98	2,546	304	4,376	1,954	5,658	1,824	171	10,993	3,232	795	31,853
1998-99	2,264	260	4,642	2,096	5,738	1,836	172	12,137	3,579	822	33,546
1999-00	2,384	280	5,083	2,137	6,017	2,013	190	12,968	4,700	916	36,688
2000-01	2,510	275	5,472	2,195	6,289	2,266	214	14,452	4,288	951	38,912
Ratio of Enrolled Applicants to Admitted Applicants											
1997-98	.63	.59	.54	.61	.60	.60	.56	.54	.55	.50	.57
1998-99	.57	.55	.51	.59	.57	.55	.55	.54	.52	.49	.54
1999-00	.60	.55	.53	.59	.58	.59	.56	.54	.61	.50	.56
2000-01	.59	.56	.52	.58	.58	.57	.59	.54	.55	.46	.55

¹Unduplicated application counts are derived by counting multiple applications from individuals to CSU campuses within a given term only once.

²Data were not collected for "Denied Eligible Applicants" or "Denied Ineligible Applicants" until the 2000-2001 college year.

In 2000-2001, 95 percent of "Denied Eligible Applicants" data were available at time of publication.

Table 73a

**Disposition of Applications for Admission by Ethnic Group
California Community College Transfers, All Campuses, from 1985-1986**

College Year	African American	American Indian	Asian American	Filipino	Mexican American	Other Latino	Pacific Islanders	White Non-Latino	No Response	Nonresident Aliens	Total
Applications Received (including duplicates)											
1985-86	4,900	1,072	9,075	1,465	4,898	2,223	354	49,630	5,559	2,952	82,128
1986-87	4,741	978	9,417	1,670	4,842	2,376	315	48,437	5,193	2,981	80,950
1987-88	5,008	916	9,165	1,748	5,252	2,595	358	49,723	6,222	3,145	84,132
1988-89	4,692	788	8,540	1,831	5,562	2,365	380	48,083	6,925	3,015	82,181
1989-90	6,280	1,079	10,214	2,556	7,795	2,702	405	55,614	8,496	3,065	98,206
1990-91	5,739	1,058	9,364	2,479	7,707	2,590	362	48,679	8,313	3,120	89,411
1991-92	5,443	1,038	9,094	2,419	7,595	3,296	390	44,861	8,716	3,785	86,637
1992-93	5,340	1,039	9,606	2,568	8,082	3,431	366	40,811	9,222	4,036	84,501
1993-94	5,627	1,175	11,977	2,932	9,101	4,145	485	40,190	10,265	4,623	90,520
1994-95	6,423	1,158	13,518	3,438	10,101	4,131	458	38,725	10,059	4,467	92,478
1995-96	6,373	1,271	14,578	3,693	11,224	4,739	497	37,656	11,015	4,737	95,783
1996-97	6,280	1,161	14,353	3,609	11,600	4,639	443	34,561	11,833	4,256	92,735
1997-98*	6,108	1,257	14,094	3,417	12,501	4,655	556	34,093	12,356	4,341	93,378
1998-99	5,785	1,051	14,219	3,766	12,807	4,797	514	37,197	13,577	4,477	98,190
1999-00	6,357	1,035	13,466	4,049	14,285	5,352	545	39,409	14,834	5,320	104,652
2000-01	6,665	1,036	13,592	4,002	14,943	5,977	579	40,449	15,969	5,410	108,622
Applicants Unaccommodated											
1985-86	30	6	236	15	47	21	7	1,133	111	63	1,669
1986-87	50	16	332	23	57	34	5	1,403	86	41	2,047
1987-88	70	8	286	30	56	38	8	1,470	114	58	2,138
1988-89	74	12	209	31	62	30	8	1,371	169	52	2,018
1989-90	86	8	195	49	94	45	12	1,478	191	49	2,207
1990-91	86	12	290	71	127	45	19	2,056	299	60	3,065
1991-92	28	1	49	8	33	9	1	476	67	22	694
1992-93	15	1	28	1	15	3	0	112	27	12	214
1993-94	13	1	10	7	18	15	2	42	13	4	125
1994-95	32	0	17	5	20	9	1	40	14	2	140
1995-96	30	1	23	7	34	10	4	61	23	6	199
1996-97	46	6	56	13	54	18	1	107	36	16	353
1997-98*	134	21	197	68	183	52	7	539	215	46	1,462
1998-99	110	39	497	120	369	137	18	2,010	570	136	4,006
1999-00	90	38	385	95	303	135	13	1,605	573	161	3,398
2000-01	98	36	394	109	368	121	13	1,729	618	143	3,629
Applicants Accommodated											
1985-86	4,870	1,066	8,839	1,450	4,851	2,202	347	48,497	5,448	2,889	80,459
1986-87	4,691	962	9,085	1,647	4,785	2,342	310	47,034	5,107	2,940	78,903
1987-88	4,938	908	8,879	1,718	5,196	2,557	350	48,253	6,108	3,087	81,994
1988-89	4,618	776	8,331	1,800	5,500	2,335	372	46,712	6,756	2,963	80,163
1989-90	6,194	1,071	10,019	2,507	7,701	2,657	393	54,136	8,305	3,016	95,999
1990-91	5,653	1,046	9,074	2,408	7,580	2,545	343	46,623	8,014	3,060	86,346
1991-92	5,415	1,037	9,045	2,411	7,562	3,287	389	44,385	8,649	3,763	85,943
1992-93	5,325	1,038	9,578	2,567	8,067	3,428	366	40,699	9,195	4,024	84,287
1993-94	5,614	1,174	11,967	2,925	9,083	4,130	483	40,148	10,252	4,619	90,395
1994-95	6,391	1,158	13,501	3,433	10,081	4,122	457	38,685	10,045	4,465	92,338
1995-96	6,343	1,270	14,555	3,686	11,190	4,729	493	37,595	10,992	4,731	95,584
1996-97	6,234	1,155	14,297	3,596	11,546	4,621	442	34,454	11,797	4,240	92,382
1997-98*	5,974	1,236	13,897	3,349	12,318	4,603	549	33,554	12,141	4,295	91,916
1998-99	5,675	1,012	13,722	3,646	12,438	4,660	496	35,187	13,007	4,341	94,184
1999-00	6,267	997	13,081	3,954	13,982	5,217	532	37,804	14,261	5,159	101,254
2000-01	6,567	1,000	13,198	3,893	14,575	5,856	566	38,720	15,351	5,267	104,993

*Data for 1997-1998 through 2000-2001 have been updated to reflect current information.

Table 73a (continued)

**Disposition of Applications for Admission by Ethnic Group
California Community College Transfers, All Campuses, from 1985-1986**

College Year	African American	American Indian	Asian American	Filipino	Mexican American	Other Latino	Pacific Islanders	White Non-Latino	No Response	Nonresident Aliens	Total
Ratio of Applicants Accommodated to Applications Received											
1985-86	.99	.99	.97	.99	.99	.99	.98	.98	.98	.98	.98
1986-87	.99	.98	.96	.99	.99	.99	.98	.97	.98	.99	.97
1987-88	.99	.99	.97	.98	.99	.99	.98	.97	.98	.98	.97
1988-89	.98	.98	.98	.98	.99	.99	.98	.97	.98	.98	.98
1989-90	.99	.99	.98	.98	.99	.98	.97	.97	.98	.98	.98
1990-91	.99	.99	.97	.97	.98	.98	.95	.96	.96	.98	.97
1991-92	.99	1.00	.99	1.00	1.00	1.00	1.00	.99	.99	.99	.99
1992-93	1.00	1.00	1.00	1.00	1.00	1.00	1.00	1.00	1.00	1.00	1.00
1993-94	1.00	1.00	1.00	1.00	1.00	1.00	1.00	1.00	1.00	1.00	1.00
1994-95	1.00	1.00	1.00	1.00	1.00	1.00	1.00	1.00	1.00	1.00	1.00
1995-96	1.00	1.00	1.00	1.00	1.00	1.00	.99	1.00	1.00	1.00	1.00
1996-97	.99	.99	1.00	1.00	1.00	1.00	1.00	1.00	1.00	1.00	1.00
1997-98*	.98	.98	.99	.98	.99	.99	.99	.98	.98	.99	.98
1998-99	.98	.96	.97	.97	.97	.97	.96	.95	.96	.97	.96
1999-00	.99	.96	.97	.98	.98	.97	.98	.96	.96	.97	.97
2000-01	.99	.97	.97	.97	.98	.98	.98	.96	.96	.97	.97
Incomplete Applications											
1985-86	1,294	216	2,294	291	921	418	55	8,238	1,107	1,183	16,017
1986-87	1,355	232	2,534	350	945	478	68	8,562	1,159	1,128	16,811
1987-88	1,414	183	2,190	374	1,014	523	70	8,403	1,256	1,137	16,564
1988-89	1,147	165	1,867	293	992	428	72	7,850	1,206	997	15,017
1989-90	1,442	202	2,290	471	1,354	518	64	8,962	1,494	1,014	17,811
1990-91	1,596	221	2,145	468	1,466	552	64	7,940	1,536	1,069	17,057
1991-92	1,653	219	2,214	545	1,574	760	93	8,044	1,877	1,471	18,450
1992-93	1,696	284	2,412	580	1,938	815	90	7,833	1,992	1,724	19,364
1993-94	1,624	262	2,691	554	1,796	843	103	6,568	1,879	1,764	18,084
1994-95	1,859	236	3,057	588	1,989	832	89	5,943	1,789	1,559	17,941
1995-96	1,719	284	3,392	687	2,225	911	85	5,713	1,914	1,703	18,633
1996-97	1,684	254	3,290	646	2,326	875	97	5,280	2,005	1,489	17,946
1997-98*	1,868	352	3,616	709	2,656	951	124	5,989	2,541	1,503	20,309
1998-99	1,913	265	4,364	958	3,136	1,150	138	8,525	3,362	1,635	25,446
1999-00	2,244	277	3,864	1,014	3,424	1,333	128	8,763	3,630	1,809	26,486
2000-01	2,430	293	3,940	1,016	3,908	1,615	147	9,339	3,942	1,881	28,511
Ratio of Incomplete Applications to Applicants Accommodated											
1985-86	.27	.20	.26	.20	.19	.19	.16	.17	.20	.41	.20
1986-87	.29	.24	.28	.21	.20	.20	.22	.18	.23	.38	.21
1987-88	.29	.20	.25	.22	.20	.20	.20	.17	.21	.37	.20
1988-89	.25	.21	.22	.16	.18	.18	.19	.17	.18	.34	.19
1989-90	.23	.19	.23	.19	.18	.19	.16	.17	.18	.34	.19
1990-91	.28	.21	.24	.19	.19	.22	.19	.17	.19	.35	.20
1991-92	.31	.21	.24	.23	.21	.23	.24	.18	.22	.39	.21
1992-93	.32	.27	.25	.23	.24	.24	.25	.19	.22	.43	.23
1993-94	.29	.22	.22	.19	.20	.20	.21	.16	.18	.38	.20
1994-95	.29	.20	.23	.17	.20	.20	.19	.15	.18	.35	.19
1995-96	.27	.22	.23	.19	.20	.19	.17	.15	.17	.36	.19
1996-97	.27	.22	.23	.18	.20	.19	.22	.15	.17	.35	.19
1997-98*	.31	.28	.26	.21	.22	.21	.23	.18	.21	.35	.22
1998-99	.34	.26	.32	.26	.25	.25	.28	.24	.26	.38	.27
1999-00	.36	.28	.30	.26	.24	.26	.24	.23	.25	.35	.26
2000-01	.37	.29	.30	.26	.27	.28	.26	.24	.26	.36	.27

*Data for 1997-1998 through 2000-2001 have been updated to reflect current information.

Table 73a (continued)

**Disposition of Applications for Admission by Ethnic Group
California Community College Transfers, All Campuses, from 1985-1986**

College Year	African American	American Indian	Asian American	Filipino	Mexican American	Other Latino	Pacific Islanders	White Non-Latino	No Response	Nonresident Aliens	Total
Denied Applicants											
1985-86	486	76	505	109	295	148	23	2,324	290	397	4,653
1986-87	495	64	597	129	286	139	17	2,459	264	408	4,858
1987-88	510	55	465	129	275	150	23	2,524	286	394	4,811
1988-89	374	37	377	123	243	118	21	1,660	276	315	3,544
1989-90	492	66	566	199	421	140	12	2,386	374	318	4,974
1990-91	493	59	522	138	379	154	21	2,189	336	335	4,626
1991-92	463	53	524	170	434	204	20	2,272	449	464	5,053
1992-93	441	48	551	163	444	186	20	1,911	417	414	4,595
1993-94	399	67	676	182	475	191	30	1,875	442	396	4,733
1994-95	437	59	584	172	487	187	24	1,510	411	420	4,291
1995-96	553	72	575	197	586	251	24	1,710	472	413	4,853
1996-97	531	61	566	206	565	247	30	1,518	512	355	4,591
1997-98*	730	122	923	310	971	421	40	2,621	919	443	7,500
1998-99	795	100	1,142	371	1,172	454	43	2,982	1,208	504	8,771
1999-00	771	108	1,053	460	1,235	494	73	3,559	1,308	517	9,578
2000-01	843	119	1,402	470	1,331	592	72	4,409	1,668	568	11,474
Ratio of Denied Applicants to Applicants Accommodated											
1985-86	.10	.07	.06	.08	.06	.07	.07	.05	.05	.14	.06
1986-87	.11	.07	.07	.08	.06	.06	.05	.05	.05	.14	.06
1987-88	.10	.06	.05	.08	.05	.06	.07	.05	.05	.13	.06
1988-89	.08	.05	.05	.07	.04	.05	.06	.04	.04	.11	.04
1989-90	.08	.06	.06	.08	.05	.05	.03	.04	.05	.11	.05
1990-91	.09	.06	.06	.06	.05	.06	.06	.05	.04	.11	.05
1991-92	.09	.05	.06	.07	.06	.06	.05	.05	.05	.12	.06
1992-93	.08	.05	.06	.06	.06	.05	.05	.05	.05	.10	.05
1993-94	.07	.06	.06	.06	.05	.05	.06	.05	.04	.09	.05
1994-95	.07	.05	.04	.05	.05	.05	.05	.04	.04	.09	.05
1995-96	.09	.06	.04	.05	.05	.05	.05	.05	.04	.09	.05
1996-97	.09	.05	.04	.06	.05	.05	.07	.04	.04	.08	.05
1997-98*	.12	.10	.07	.09	.08	.09	.07	.08	.08	.10	.08
1998-99	.14	.10	.08	.10	.09	.10	.09	.08	.09	.12	.09
1999-00	.12	.11	.08	.12	.09	.09	.14	.09	.09	.10	.09
2000-01	.13	.12	.11	.12	.09	.10	.13	.11	.11	.11	.11
Admitted Applicants											
1985-86	3,090	774	6,040	1,050	3,635	1,636	269	37,935	4,051	1,309	59,789
1986-87	2,841	666	5,954	1,168	3,554	1,725	225	36,013	3,684	1,404	57,234
1987-88	3,014	670	6,224	1,215	3,907	1,884	257	37,326	4,566	1,556	60,619
1988-89	3,097	574	6,087	1,384	4,265	1,789	279	37,202	5,274	1,651	61,602
1989-90	4,260	803	7,163	1,837	5,926	1,999	317	42,778	6,437	1,684	73,214
1990-91	3,564	766	6,407	1,802	5,735	1,839	258	36,494	6,142	1,656	64,663
1991-92	3,299	765	6,307	1,696	5,554	2,323	276	34,069	6,323	1,828	62,440
1992-93	3,188	706	6,615	1,824	5,685	2,427	256	30,955	6,786	1,886	60,328
1993-94	3,591	845	8,600	2,189	6,812	3,096	350	31,705	7,931	2,459	67,578
1994-95	4,095	863	9,860	2,673	7,605	3,103	344	31,232	7,845	2,486	70,106
1995-96	4,071	914	10,586	2,801	8,377	3,567	382	30,144	8,597	2,613	72,052
1996-97	4,019	840	10,440	2,744	8,655	3,499	315	27,656	9,279	2,396	69,843
1997-98*	3,337	754	9,216	2,293	8,505	3,150	373	24,663	8,566	2,253	63,110
1998-99	2,862	650	8,313	2,330	8,097	3,053	322	24,571	8,569	2,168	60,935
1999-00	3,172	618	8,258	2,472	9,266	3,360	328	26,053	9,508	2,826	65,861
2000-01	3,331	613	8,162	2,481	9,556	3,711	360	26,440	10,245	2,845	67,744

*Data for 1997-1998 through 2000-2001 have been updated to reflect current information.

Table 73a (continued)

**Disposition of Applications for Admission by Ethnic Group
California Community College Transfers, All Campuses, from 1985-1986**

College Year	African American	American Indian	Asian American	Filipino	Mexican American	Other Latino	Pacific Islanders	White Non-Latino	No Response	Nonresident Aliens	Total
Ratio of Admitted Applicants to Applicants Accommodated											
1985-86	.63	.73	.68	.72	.75	.74	.78	.78	.74	.45	.74
1986-87	.61	.69	.66	.71	.74	.74	.73	.77	.72	.48	.73
1987-88	.61	.74	.70	.71	.75	.74	.73	.77	.75	.60	.74
1988-89	.67	.74	.73	.77	.78	.77	.75	.80	.78	.56	.77
1989-90	.69	.75	.71	.73	.77	.75	.81	.79	.78	.56	.76
1990-91	.63	.73	.71	.75	.76	.72	.75	.78	.77	.54	.75
1991-92	.61	.74	.70	.70	.73	.71	.71	.77	.73	.49	.73
1992-93	.60	.68	.69	.71	.70	.71	.70	.76	.74	.47	.72
1993-94	.64	.72	.72	.75	.75	.75	.72	.79	.77	.53	.75
1994-95	.64	.75	.73	.78	.75	.75	.75	.81	.78	.56	.76
1995-96	.64	.72	.73	.76	.75	.75	.77	.80	.78	.55	.75
1996-97	.64	.73	.73	.76	.75	.76	.71	.80	.79	.57	.76
1997-98*	.56	.61	.66	.68	.69	.68	.68	.74	.71	.52	.69
1998-99	.50	.64	.61	.64	.65	.66	.65	.70	.66	.50	.65
1999-00	.51	.62	.63	.63	.66	.64	.62	.69	.67	.55	.65
2000-01	.51	.61	.62	.64	.66	.63	.64	.68	.67	.54	.65
Enrolled Applicants											
1985-86	2,427	586	4,213	827	2,848	1,283	215	29,090	3,066	914	45,469
1986-87	2,176	507	4,184	893	2,858	1,352	171	27,712	2,793	1,020	43,666
1987-88	2,297	510	4,222	931	3,090	1,422	198	27,680	3,245	1,106	44,701
1988-89	2,345	440	4,054	1,067	3,269	1,392	214	27,832	3,628	1,161	45,402
1989-90	2,500	500	4,139	1,155	3,787	1,196	188	27,019	4,149	1,091	45,724
1990-91	2,657	566	4,363	1,297	4,329	1,365	189	26,446	4,321	1,145	46,678
1991-92	2,480	541	4,264	1,245	4,219	1,715	206	24,480	4,512	1,238	44,900
1992-93	2,241	500	4,234	1,204	4,157	1,623	182	21,061	4,546	1,233	40,981
1993-94	2,444	554	5,205	1,432	4,728	2,056	225	21,087	5,248	1,475	44,454
1994-95	2,654	539	5,986	1,739	5,344	2,093	226	21,402	5,328	1,601	46,912
1995-96	2,836	641	6,312	1,840	5,883	2,451	250	20,931	5,973	1,571	48,688
1996-97	2,799	604	6,516	1,867	6,231	2,430	225	19,623	6,551	1,503	48,349
1997-98*	2,442	565	6,085	1,626	6,201	2,263	261	18,341	6,287	1,475	45,546
1998-99	2,105	475	5,989	1,711	5,962	2,239	241	18,375	6,349	1,543	44,989
1999-00	2,257	442	5,820	1,776	6,840	2,446	236	19,048	6,872	1,969	47,706
2000-01	2,343	439	5,580	1,687	6,972	2,634	254	18,650	7,304	2,037	47,900
Ratio of Enrolled Applicants to Admitted Applicants											
1985-86	.79	.76	.70	.79	.78	.78	.80	.77	.76	.70	.76
1986-87	.77	.76	.70	.76	.80	.78	.76	.77	.76	.73	.76
1987-88	.76	.76	.68	.77	.79	.75	.77	.74	.71	.71	.74
1988-89	.76	.77	.67	.77	.77	.78	.77	.75	.69	.70	.74
1989-90	.59	.62	.58	.63	.64	.60	.59	.63	.64	.65	.62
1990-91	.75	.74	.68	.72	.75	.74	.73	.72	.70	.69	.72
1991-92	.75	.71	.68	.73	.76	.74	.75	.72	.71	.68	.72
1992-93	.70	.71	.64	.66	.73	.67	.71	.68	.67	.65	.68
1993-94	.68	.66	.61	.65	.69	.66	.64	.67	.66	.60	.66
1994-95	.65	.62	.61	.65	.70	.67	.66	.69	.68	.64	.67
1995-96	.70	.70	.60	.66	.70	.69	.65	.69	.69	.60	.68
1996-97	.70	.72	.62	.68	.72	.69	.71	.71	.71	.63	.69
1997-98*	.73	.75	.66	.71	.73	.72	.70	.74	.73	.65	.72
1998-99	.74	.73	.72	.73	.74	.73	.75	.75	.74	.71	.74
1999-00	.71	.72	.70	.72	.74	.73	.72	.73	.72	.70	.72
2000-01	.70	.72	.68	.68	.73	.71	.71	.71	.71	.72	.71

*Data for 1997-1998 through 2000-2001 have been updated to reflect current information.

Table 73b

**Disposition of Unduplicated¹ Applications for Admission by Ethnic Group
California Community College Transfers, All Campuses, from 1997-1998**

College Year	African American	American Indian	Asian American	Filipino	Mexican American	Other Latino	Pacific Islanders	White Non-Latino	No Response	Nonresident Aliens	Total
Applications Received (unduplicated)											
1997-98	5,196	1,120	10,835	2,864	10,400	3,962	454	29,453	10,610	3,234	78,128
1998-99	4,908	902	10,916	3,112	10,751	4,085	444	31,366	11,424	3,393	81,301
1999-00	5,251	859	10,354	3,246	11,669	4,380	453	32,387	12,196	3,978	84,773
2000-01	5,483	857	10,366	3,205	12,309	4,946	483	33,177	13,181	4,106	88,113
Applicants Unaccommodated											
1997-98	96	15	114	50	116	35	7	404	143	26	1,006
1998-99	73	20	214	55	213	80	10	1,230	348	79	2,322
1999-00	49	23	151	48	148	67	5	914	299	81	1,785
2000-01	57	25	177	61	211	65	7	1,047	331	81	2,062
Applicants Accommodated											
1997-98	5,100	1,105	10,721	2,814	10,284	3,927	447	29,049	10,467	3,208	77,122
1998-99	4,835	882	10,702	3,057	10,538	4,005	434	30,136	11,076	3,314	78,979
1999-00	5,202	836	10,203	3,198	11,521	4,313	448	31,473	11,897	3,897	82,988
2000-01	5,426	832	10,189	3,144	12,098	4,881	476	32,130	12,850	4,025	86,051
Ratio of Applicants Accommodated to Applications Received											
1997-98	.98	.99	.99	.98	.99	.99	.98	.99	.99	.99	.99
1998-99	.99	.98	.98	.98	.98	.98	.98	.96	.97	.98	.97
1999-00	.99	.97	.99	.99	.99	.98	.99	.97	.98	.98	.98
2000-01	.99	.97	.98	.98	.98	.99	.99	.97	.97	.98	.98
Incomplete Applications											
1997-98	1,351	276	1,901	461	1,645	649	77	4,135	1,713	849	13,057
1998-99	1,398	194	2,314	605	2,022	777	97	5,633	2,218	1,020	16,278
1999-00	1,547	181	2,125	621	2,067	843	86	5,556	2,318	1,065	16,409
2000-01	1,686	206	2,216	659	2,504	1,101	97	6,119	2,621	1,152	18,361
Ratio of Incomplete Applications to Applicants Accommodated											
1997-98	.26	.25	.18	.16	.16	.17	.17	.14	.16	.26	.17
1998-99	.29	.22	.22	.20	.19	.19	.22	.19	.20	.31	.21
1999-00	.30	.22	.21	.19	.18	.20	.19	.18	.19	.27	.20
2000-01	.31	.25	.22	.21	.21	.23	.20	.19	.20	.29	.21
Denied Applicants											
1997-98	604	101	699	264	789	343	32	2,134	767	314	6,047
1998-99	646	78	861	292	931	350	38	2,313	959	350	6,818
1999-00	618	77	749	325	927	366	56	2,526	956	359	6,959
2000-01	653	87	899	345	975	414	54	2,996	1,180	359	7,962
Ratio of Denied Applicants to Applicants Accommodated											
1997-98	.12	.09	.07	.09	.08	.09	.07	.07	.07	.10	.08
1998-99	.13	.09	.08	.10	.09	.09	.09	.08	.09	.11	.09
1999-00	.12	.09	.07	.10	.08	.08	.13	.08	.08	.09	.08
2000-01	.12	.10	.09	.11	.08	.08	.11	.09	.09	.09	.09

Note: Above figures include both upper division and lower division community college transfers.

¹Unduplicated application counts are derived by counting multiple applications from individuals to CSU campuses within a given term only once.

Table 73b (continued)

**Disposition of Unduplicated¹ Applications for Admission by Ethnic Group
California Community College Transfers, All Campuses, from 1997-1998**

College Year	African American	American Indian	Asian American	Filipino	Mexican American	Other Latino	Pacific Islanders	White Non-Latino	No Response	Nonresident Aliens	Total
Denied Eligible Applicants²											
1997-98	—	—	—	—	—	—	—	—	—	—	—
1998-99	—	—	—	—	—	—	—	—	—	—	—
1999-00	—	—	—	—	—	—	—	—	—	—	—
2000-01	3	11	64	27	62	22	2	438	123	17	769
Ratio of Denied Eligible Applicants to Total Denied Applicants²											
1997-98	—	—	—	—	—	—	—	—	—	—	—
1998-99	—	—	—	—	—	—	—	—	—	—	—
1999-00	—	—	—	—	—	—	—	—	—	—	—
2000-01	.00	.13	.07	.08	.06	.05	.04	.15	.10	.05	.10
Denied Ineligible Applicants²											
1997-98	—	—	—	—	—	—	—	—	—	—	—
1998-99	—	—	—	—	—	—	—	—	—	—	—
1999-00	—	—	—	—	—	—	—	—	—	—	—
2000-01	650	76	835	318	913	392	52	2,558	1,057	342	7,193
Ratio of Denied Ineligible Applicants to Total Denied Applicants²											
1997-98	—	—	—	—	—	—	—	—	—	—	—
1998-99	—	—	—	—	—	—	—	—	—	—	—
1999-00	—	—	—	—	—	—	—	—	—	—	—
2000-01	1.00	.87	.93	.92	.94	.95	.96	.85	.90	.95	.90
Admitted Applicants											
1997-98	3,116	720	8,028	2,059	7,740	2,869	337	22,670	7,913	1,988	57,440
1998-99	2,703	603	7,486	2,146	7,505	2,856	298	22,685	7,936	1,930	56,148
1999-00	2,956	579	7,316	2,241	8,437	3,065	300	23,685	8,686	2,474	59,739
2000-01	3,098	555	7,191	2,176	8,712	3,391	332	23,862	9,283	2,532	61,132
Ratio of Admitted Applicants to Applicants Accommodated											
1997-98	.61	.65	.75	.73	.75	.73	.75	.78	.76	.62	.74
1998-99	.56	.68	.70	.70	.71	.71	.69	.75	.72	.58	.71
1999-00	.57	.69	.72	.70	.73	.71	.67	.75	.73	.63	.72
2000-01	.57	.67	.71	.69	.72	.69	.70	.74	.72	.63	.71
Enrolled Applicants											
1997-98	2,442	565	6,085	1,626	6,201	2,263	261	18,341	6,287	1,475	45,546
1998-99	2,105	475	5,989	1,711	5,962	2,239	241	18,375	6,349	1,543	44,989
1999-00	2,257	442	5,820	1,776	6,840	2,446	236	19,048	6,872	1,969	47,706
2000-01	2,343	439	5,580	1,687	6,972	2,634	254	18,650	7,304	2,037	47,900
Ratio of Enrolled Applicants to Admitted Applicants											
1997-98	.78	.78	.76	.79	.80	.79	.77	.81	.79	.74	.79
1998-99	.78	.79	.80	.80	.79	.78	.81	.81	.80	.80	.80
1999-00	.76	.76	.80	.79	.81	.80	.79	.80	.79	.80	.80
2000-01	.76	.79	.78	.78	.80	.78	.77	.78	.79	.80	.78

Note: Above figures include both upper division and lower division community college transfers.

¹Unduplicated application counts are derived by counting multiple applications from individuals to CSU campuses within a given term only once.

²Data were not collected for "Denied Eligible Applicants" or "Denied Ineligible Applicants" until the 2000-2001 college year.

In 2000-2001, 95 percent of "Denied Eligible Applicants" data were available at time of publication.

Table 74

Disposition of Unduplicated¹ Applications for Admission by Ethnic Group
Upper Division California Community College Transfers, All Campuses, from 1997-1998

College Year	African American	American Indian	Asian American	Filipino	Mexican American	Other Latino	Pacific Islanders	White Non-Latino	No Response	Nonresident Aliens	Total
Applications Received (unduplicated)											
1997-98	3,767	824	9,413	2,275	8,548	3,240	367	23,474	8,603	2,721	63,232
1998-99	3,745	725	9,603	2,526	8,976	3,417	352	25,466	9,412	2,970	67,192
1999-00	3,995	670	9,110	2,643	9,766	3,697	395	26,412	10,201	3,514	70,403
2000-01	4,096	652	8,688	2,458	10,108	3,967	376	25,545	10,536	3,560	69,986
Applicants Unaccommodated											
1997-98	70	11	93	39	94	29	5	348	115	17	821
1998-99	48	19	187	48	175	56	10	981	281	71	1,876
1999-00	37	19	135	37	121	56	5	750	246	70	1,476
2000-01	50	23	157	54	173	58	5	850	282	71	1,723
Applicants Accommodated											
1997-98	3,697	813	9,320	2,236	8,454	3,211	362	23,126	8,488	2,704	62,411
1998-99	3,697	706	9,416	2,478	8,801	3,361	342	24,485	9,131	2,899	65,316
1999-00	3,958	651	8,975	2,606	9,645	3,641	390	25,662	9,955	3,444	68,927
2000-01	4,046	629	8,531	2,404	9,935	3,909	371	24,695	10,254	3,489	68,263
Ratio of Applicants Accommodated to Applications Received											
1997-98	.98	.99	.99	.98	.99	.99	.99	.99	.99	.99	.99
1998-99	.99	.97	.98	.98	.98	.98	.97	.96	.97	.98	.97
1999-00	.99	.97	.99	.99	.99	.98	.99	.97	.98	.98	.98
2000-01	.99	.96	.98	.98	.98	.99	.99	.97	.97	.98	.98
Incomplete Applications											
1997-98	823	170	1,411	295	1,136	438	48	2,768	1,133	650	8,872
1998-99	953	136	1,880	443	1,584	585	63	4,171	1,650	831	12,296
1999-00	1,022	122	1,699	437	1,543	640	73	4,109	1,763	891	12,299
2000-01	1,182	147	1,745	471	1,916	827	70	4,361	1,970	982	13,671
Ratio of Incomplete Applications to Applicants Accommodated											
1997-98	.22	.21	.15	.13	.13	.14	.13	.12	.13	.24	.14
1998-99	.26	.19	.20	.18	.18	.17	.18	.17	.18	.29	.19
1999-00	.26	.19	.19	.17	.16	.18	.19	.16	.18	.26	.18
2000-01	.29	.23	.20	.20	.19	.21	.19	.18	.19	.28	.20
Denied Applicants											
1997-98	317	67	487	147	498	222	23	1,375	531	219	3,886
1998-99	403	53	620	170	558	214	26	1,442	607	258	4,351
1999-00	376	45	529	194	573	230	39	1,447	627	283	4,343
2000-01	442	59	661	233	701	295	35	2,057	874	279	5,636
Ratio of Denied Applicants to Applicants Accommodated											
1997-98	.09	.08	.05	.07	.06	.07	.06	.06	.06	.08	.06
1998-99	.11	.08	.07	.07	.06	.06	.08	.06	.07	.09	.07
1999-00	.09	.07	.06	.07	.06	.06	.10	.06	.06	.08	.06
2000-01	.11	.09	.08	.10	.07	.08	.09	.08	.09	.08	.08

¹Unduplicated application counts are derived by counting multiple applications from individuals to CSU campuses within a given term only once.

Table 74 (continued)

Disposition of Unduplicated¹ Applications for Admission by Ethnic Group
Upper Division California Community College Transfers, All Campuses, from 1997-1998

College Year	African American	American Indian	Asian American	Filipino	Mexican American	Other Latino	Pacific Islanders	White Non-Latino	No Response	Nonresident Aliens	Total
Denied Eligible Applicants²											
1997-98	—	—	—	—	—	—	—	—	—	—	—
1998-99	—	—	—	—	—	—	—	—	—	—	—
1999-00	—	—	—	—	—	—	—	—	—	—	—
2000-01	3	11	62	25	61	22	2	429	122	17	754
Ratio of Denied Eligible Applicants to Total Denied Applicants²											
1997-98	—	—	—	—	—	—	—	—	—	—	—
1998-99	—	—	—	—	—	—	—	—	—	—	—
1999-00	—	—	—	—	—	—	—	—	—	—	—
2000-01	.01	.19	.09	.11	.09	.07	.06	.21	.14	.06	.13
Denied Ineligible Applicants²											
1997-98	—	—	—	—	—	—	—	—	—	—	—
1998-99	—	—	—	—	—	—	—	—	—	—	—
1999-00	—	—	—	—	—	—	—	—	—	—	—
2000-01	439	48	599	208	640	273	33	1,628	752	262	4,882
Ratio of Denied Ineligible Applicants to Total Denied Applicants²											
1997-98	—	—	—	—	—	—	—	—	—	—	—
1998-99	—	—	—	—	—	—	—	—	—	—	—
1999-00	—	—	—	—	—	—	—	—	—	—	—
2000-01	.99	.81	.91	.89	.91	.93	.94	.79	.86	.94	.87
Admitted Applicants											
1997-98	2,526	568	7,338	1,760	6,739	2,499	288	18,866	6,747	1,784	49,115
1998-99	2,252	514	6,875	1,848	6,583	2,525	252	19,173	6,873	1,800	48,695
1999-00	2,494	482	6,739	1,958	7,454	2,735	273	20,296	7,595	2,265	52,291
2000-01	2,444	442	6,233	1,735	7,409	2,815	271	18,959	7,614	2,246	50,168
Ratio of Admitted Applicants to Applicants Accommodated											
1997-98	.68	.70	.79	.79	.80	.78	.80	.82	.79	.66	.79
1998-99	.61	.73	.73	.75	.75	.75	.74	.78	.75	.62	.75
1999-00	.63	.74	.75	.75	.77	.75	.70	.79	.76	.66	.76
2000-01	.60	.70	.73	.72	.75	.72	.73	.77	.74	.64	.73
Enrolled Applicants											
1997-98	1,883	435	5,347	1,343	5,151	1,902	204	14,551	5,179	1,274	37,269
1998-99	1,675	395	5,307	1,440	4,985	1,881	195	14,924	5,352	1,365	37,519
1999-00	1,842	365	5,171	1,489	5,710	2,082	208	15,617	5,758	1,731	39,973
2000-01	2,004	389	5,185	1,504	6,399	2,382	229	16,502	6,629	1,937	43,160
Ratio of Enrolled Applicants to Admitted Applicants											
1997-98	.75	.77	.73	.76	.76	.76	.71	.77	.77	.71	.76
1998-99	.74	.77	.77	.78	.76	.74	.77	.78	.78	.76	.77
1999-00	.74	.76	.77	.76	.77	.76	.76	.77	.76	.76	.76
2000-01	.82	.88	.83	.87	.86	.85	.85	.87	.87	.86	.86

¹Unduplicated application counts are derived by counting multiple applications from individuals to CSU campuses within a given term only once.

²Data were not collected for "Denied Eligible Applicants" or "Denied Ineligible Applicants" until the 2000-2001 college year.

In 2000-2001, 95 percent of "Denied Eligible Applicants" data were available at time of publication.

Table 75a

**Disposition of Applications for Admission by Ethnic Group
New Postbaccalaureates/Graduates, from 1990-1991**

College Year	African American	American Indian	Asian American	Filipino	Mexican American	Other Latino	Pacific Islanders	White Non-Latino	No Response	Nonresident Aliens	Total
Applications Received (including duplicates)											
1990-91	2,788	483	5,569	882	3,093	1,453	102	37,428	7,254	10,002	69,054
1991-92	2,793	481	6,034	978	3,111	1,627	152	35,062	8,338	10,817	69,393
1992-93	2,973	471	6,237	920	3,436	1,737	162	32,180	8,216	9,333	65,665
1993-94	2,769	449	6,135	999	3,629	1,865	168	29,112	8,243	7,906	61,275
1994-95	3,083	473	6,320	1,015	3,918	2,003	152	27,413	7,808	7,608	59,793
1995-96	3,226	494	6,269	1,168	4,485	2,038	208	27,858	7,243	9,033	62,022
1996-97	3,667	552	6,929	1,357	5,543	2,486	186	29,797	7,848	10,997	69,362
1997-98*	4,002	713	7,508	1,428	6,330	2,753	249	30,973	8,807	12,422	75,185
1998-99	4,210	590	7,857	1,614	6,985	2,685	269	31,618	9,529	13,039	78,396
1999-00	4,566	586	8,151	1,732	7,424	2,864	299	31,994	9,589	14,349	81,554
2000-01	4,470	563	7,614	1,748	7,447	2,934	241	30,539	9,791	16,173	81,520
Applicants Unaccommodated											
1990-91	11	0	18	2	10	3	0	113	29	114	300
1991-92	15	3	28	1	11	6	0	106	32	40	242
1992-93	21	1	16	0	5	5	1	64	21	35	169
1993-94	14	0	18	3	9	2	0	73	28	28	175
1994-95	20	4	22	2	17	7	1	64	16	11	164
1995-96	28	3	19	3	15	4	2	46	38	64	222
1996-97	18	2	12	6	19	8	0	91	33	78	267
1997-98*	64	16	101	15	91	41	4	425	300	366	1,423
1998-99	56	13	118	18	76	38	2	362	300	477	1,460
1999-00	59	12	184	12	83	30	2	301	297	588	1,568
2000-01	34	5	115	18	69	34	5	357	237	565	1,439
Applicants Accommodated											
1990-91	2,777	483	5,551	880	3,083	1,450	102	37,315	7,225	9,888	68,754
1991-92	2,778	478	6,006	977	3,100	1,621	152	34,956	8,306	10,777	69,151
1992-93	2,952	470	6,221	920	3,431	1,732	161	32,116	8,195	9,298	65,496
1993-94	2,755	449	6,117	996	3,620	1,863	168	29,039	8,215	7,878	61,100
1994-95	3,063	469	6,298	1,013	3,901	1,996	151	27,349	7,792	7,597	59,629
1995-96	3,198	491	6,250	1,165	4,470	2,034	206	27,812	7,205	8,969	61,800
1996-97	3,649	550	6,917	1,351	5,524	2,478	186	29,706	7,815	10,919	69,095
1997-98*	3,938	697	7,407	1,413	6,239	2,712	245	30,548	8,507	12,056	73,762
1998-99	4,154	577	7,739	1,596	6,909	2,647	267	31,256	9,229	12,562	76,936
1999-00	4,507	574	7,967	1,720	7,341	2,834	297	31,693	9,292	13,761	79,986
2000-01	4,436	558	7,499	1,730	7,378	2,900	236	30,182	9,554	15,608	80,081
Ratio of Applicants Accommodated to Applications Received											
1990-91	1.00	1.00	1.00	1.00	1.00	1.00	1.00	1.00	1.00	.99	1.00
1991-92	.99	.99	1.00	1.00	1.00	1.00	1.00	1.00	1.00	1.00	1.00
1992-93	.99	1.00	1.00	1.00	1.00	1.00	.99	1.00	1.00	1.00	1.00
1993-94	.99	1.00	1.00	1.00	1.00	1.00	1.00	1.00	1.00	1.00	1.00
1994-95	.99	.99	1.00	1.00	1.00	1.00	.99	1.00	1.00	1.00	1.00
1995-96	.99	.99	1.00	1.00	1.00	1.00	.99	1.00	.99	.99	1.00
1996-97	1.00	1.00	1.00	1.00	1.00	1.00	1.00	1.00	1.00	.99	1.00
1997-98*	.98	.98	.99	.99	.99	.99	.98	.99	.97	.97	.98
1998-99	.99	.98	.98	.99	.99	.99	.99	.99	.97	.96	.98
1999-00	.99	.98	.98	.99	.99	.99	.99	.99	.97	.96	.98
2000-01	.99	.99	.98	.99	.99	.99	.98	.99	.98	.97	.98

*Data for 1997-1998 through 2000-2001 have been updated to reflect current information.

Table 75a (continued)

Disposition of Applications for Admission by Ethnic Group
New Postbaccalaureates/Graduates, from 1990-1991

College Year	African American	American Indian	Asian American	Filipino	Mexican American	Other Latino	Pacific Islanders	White Non-Latino	No Response	Nonresident Aliens	Total
Incomplete Applications											
1990-91	408	47	855	157	329	175	5	3,684	1,162	3,273	10,095
1991-92	449	61	1,006	187	331	223	19	3,988	1,568	3,815	11,647
1992-93	491	63	1,082	169	474	241	22	3,881	1,735	3,402	11,560
1993-94	481	74	1,052	172	417	253	19	3,520	1,832	2,841	10,661
1994-95	526	70	1,013	174	446	297	24	3,071	1,559	2,602	9,782
1995-96	622	79	1,114	222	538	291	46	3,485	1,147	3,517	11,061
1996-97	659	79	1,136	234	677	349	29	3,674	1,188	4,118	12,143
1997-98*	711	137	1,161	217	707	369	47	3,544	1,387	4,352	12,632
1998-99	773	90	1,312	264	875	390	71	3,805	1,506	4,688	13,774
1999-00	878	106	1,443	321	955	401	64	4,216	1,688	4,904	14,976
2000-01	888	95	1,506	322	901	463	49	4,296	1,640	5,743	15,903
Ratio of Incomplete Applications to Applicants Accommodated											
1990-91	.15	.10	.15	.18	.11	.12	.05	.10	.16	.33	.15
1991-92	.16	.13	.17	.19	.11	.14	.13	.11	.19	.35	.17
1992-93	.17	.13	.17	.18	.14	.14	.14	.12	.21	.37	.18
1993-94	.17	.16	.17	.17	.12	.14	.11	.12	.22	.36	.17
1994-95	.17	.15	.16	.17	.11	.15	.16	.11	.20	.34	.16
1995-96	.19	.16	.18	.19	.12	.14	.22	.13	.16	.39	.18
1996-97	.18	.14	.16	.17	.12	.14	.16	.12	.15	.38	.18
1997-98*	.18	.20	.16	.15	.11	.14	.19	.12	.16	.36	.17
1998-99	.19	.16	.17	.17	.13	.15	.27	.12	.16	.37	.18
1999-00	.19	.18	.18	.19	.13	.14	.22	.13	.18	.36	.19
2000-01	.20	.17	.20	.19	.12	.16	.21	.14	.17	.37	.20
Denied Applicants											
1990-91	257	19	521	85	169	107	9	1,544	334	2,349	5,394
1991-92	277	29	667	101	214	121	16	2,051	541	2,591	6,608
1992-93	406	24	798	107	307	176	17	2,596	728	2,238	7,397
1993-94	428	45	787	130	347	186	26	2,340	704	1,701	6,694
1994-95	477	48	797	136	388	235	19	2,633	804	1,743	7,280
1995-96	566	59	939	188	558	293	36	3,169	831	1,999	8,638
1996-97	519	47	946	218	575	322	19	3,135	866	2,502	9,149
1997-98*	596	85	1,062	245	636	313	29	3,600	1,085	2,736	10,387
1998-99	659	65	1,151	278	752	352	29	3,548	1,180	2,634	10,648
1999-00	686	59	1,135	256	758	357	31	3,396	1,040	3,153	10,871
2000-01	563	59	976	207	649	291	29	2,629	806	3,217	9,426
Ratio of Denied Applicants to Applicants Accommodated											
1990-91	.09	.04	.09	.10	.05	.07	.09	.04	.05	.24	.08
1991-92	.10	.06	.11	.10	.07	.07	.11	.06	.07	.24	.10
1992-93	.14	.05	.13	.12	.09	.10	.11	.08	.09	.24	.11
1993-94	.16	.10	.13	.13	.10	.10	.15	.08	.09	.22	.11
1994-95	.16	.10	.13	.13	.10	.12	.13	.10	.10	.23	.12
1995-96	.18	.12	.15	.16	.12	.14	.17	.11	.12	.22	.14
1996-97	.14	.09	.14	.16	.10	.13	.10	.11	.11	.23	.13
1997-98*	.15	.12	.14	.17	.10	.12	.12	.12	.13	.23	.14
1998-99	.16	.11	.15	.17	.11	.13	.11	.11	.13	.21	.14
1999-00	.15	.10	.14	.15	.10	.13	.10	.11	.11	.23	.14
2000-01	.13	.11	.13	.12	.09	.10	.12	.09	.08	.21	.12

*Data for 1997-1998 through 2000-2001 have been updated to reflect current information.

Table 75a (continued)

Disposition of Applications for Admission by Ethnic Group
New Postbaccalaureates/Graduates, from 1990-1991

College Year	African American	American Indian	Asian American	Filipino	Mexican American	Other Latino	Pacific Islanders	White Non-Latino	No Response	Nonresident Aliens	Total
Admitted Applicants											
1990-91	2,112	417	4,175	638	2,585	1,168	88	32,087	5,729	4,266	53,265
1991-92	2,052	388	4,333	689	2,555	1,277	117	28,917	6,197	4,371	50,896
1992-93	2,055	383	4,341	644	2,650	1,315	122	25,639	5,732	3,658	46,539
1993-94	1,846	330	4,278	694	2,856	1,424	123	23,179	5,679	3,336	43,745
1994-95	2,060	351	4,488	703	3,067	1,464	108	21,645	5,429	3,252	42,567
1995-96	2,009	353	4,197	753	3,374	1,450	124	21,155	5,221	3,453	42,089
1996-97	2,466	424	4,831	899	4,270	1,805	138	22,889	5,759	4,299	47,780
1997-98*	2,595	481	5,124	941	4,864	2,004	170	23,304	6,165	4,820	50,468
1998-99	2,689	426	5,224	1,045	5,225	1,885	161	23,783	6,692	5,202	52,332
1999-00	2,899	410	5,295	1,120	5,558	2,043	199	23,878	6,681	5,675	53,758
2000-01	2,945	402	4,974	1,184	5,821	2,148	160	23,290	7,219	6,515	54,658
Ratio of Admitted Applicants to Applicants Accommodated											
1990-91	.76	.86	.75	.73	.84	.81	.86	.86	.79	.43	.77
1991-92	.74	.81	.72	.71	.82	.79	.77	.83	.75	.41	.74
1992-93	.70	.81	.70	.70	.77	.76	.76	.80	.70	.39	.71
1993-94	.67	.73	.70	.70	.79	.76	.73	.80	.69	.42	.72
1994-95	.67	.75	.71	.69	.79	.73	.72	.79	.70	.43	.71
1995-96	.63	.72	.67	.65	.75	.71	.60	.76	.72	.38	.68
1996-97	.68	.77	.70	.67	.77	.73	.74	.77	.74	.39	.69
1997-98*	.66	.69	.69	.67	.78	.74	.69	.76	.72	.40	.68
1998-99	.65	.74	.68	.65	.76	.71	.60	.76	.73	.41	.68
1999-00	.64	.71	.66	.65	.76	.72	.67	.75	.72	.41	.67
2000-01	.66	.72	.66	.68	.79	.74	.68	.77	.76	.42	.68
Enrolled Applicants											
1990-91	1,383	292	2,582	447	1,976	796	54	22,167	3,796	1,875	35,368
1991-92	1,351	243	2,600	435	1,813	838	69	19,286	3,916	1,829	32,380
1992-93	1,273	245	2,465	422	1,853	822	64	16,257	3,531	1,419	28,351
1993-94	1,163	232	2,376	391	2,016	906	76	14,724	3,544	1,286	26,714
1994-95	1,245	209	2,559	451	2,203	966	77	13,986	3,329	1,368	26,393
1995-96	1,369	254	2,558	505	2,600	1,021	77	14,499	3,475	1,603	27,961
1996-97	1,620	292	2,980	571	3,215	1,239	82	15,599	3,911	2,043	31,552
1997-98*	1,680	299	3,142	609	3,534	1,343	101	15,749	4,026	2,288	32,771
1998-99	1,758	302	3,253	691	3,720	1,274	122	16,184	4,343	2,526	34,173
1999-00	1,939	289	3,417	781	4,226	1,453	127	16,893	4,588	2,811	36,524
2000-01	2,006	273	3,182	810	4,373	1,547	98	16,295	4,779	3,143	36,506
Ratio of Enrolled Applicants to Applicants Admitted											
1990-91	.65	.70	.62	.70	.76	.68	.61	.69	.66	.44	.66
1991-92	.66	.63	.60	.63	.71	.66	.59	.67	.63	.42	.64
1992-93	.62	.64	.57	.66	.70	.63	.52	.63	.62	.39	.61
1993-94	.63	.70	.56	.56	.71	.64	.62	.64	.62	.39	.61
1994-95	.60	.60	.57	.64	.72	.66	.71	.65	.61	.42	.62
1995-96	.68	.72	.61	.67	.77	.70	.62	.69	.67	.46	.66
1996-97	.66	.69	.62	.64	.75	.69	.59	.68	.68	.48	.66
1997-98*	.65	.62	.61	.65	.73	.67	.59	.68	.65	.47	.65
1998-99	.65	.71	.62	.66	.71	.68	.76	.68	.65	.49	.65
1999-00	.67	.70	.65	.70	.76	.71	.64	.71	.69	.50	.68
2000-01	.68	.68	.64	.68	.75	.72	.61	.70	.66	.48	.67

*Data for 1997-1998 through 2000-2001 have been updated to reflect current information.

Table 75b

**Disposition of Unduplicated¹ Applications for Admission by Ethnic Group
New Postbaccalaureates/Graduates, from 1997-1998**

College Year	African American	American Indian	Asian American	Filipino	Mexican American	Other Latino	Pacific Islanders	White Non-Latino	No Response	Nonresident Aliens	Total
Applications Received (unduplicated)											
1997-98	3,664	649	6,531	1,275	5,890	2,525	232	28,527	8,004	11,166	68,463
1998-99	3,916	553	6,898	1,473	6,512	2,498	254	29,371	8,718	11,882	72,075
1999-00	4,224	540	7,049	1,565	6,976	2,664	271	29,678	8,728	13,069	74,764
2000-01	4,118	532	6,706	1,594	7,014	2,726	212	28,435	9,035	15,039	75,411
Applicants Unaccommodated											
1997-98	49	12	65	12	74	34	3	355	226	335	1,165
1998-99	46	11	81	13	64	33	2	290	244	432	1,216
1999-00	49	12	122	8	63	24	1	248	226	518	1,271
2000-01	29	5	80	13	60	26	4	278	181	517	1,193
Applicants Accommodated											
1997-98	3,615	637	6,466	1,263	5,816	2,491	229	28,172	7,778	10,831	67,298
1998-99	3,870	542	6,817	1,460	6,448	2,465	252	29,081	8,474	11,450	70,859
1999-00	4,175	528	6,927	1,557	6,913	2,640	270	29,430	8,502	12,551	73,493
2000-01	4,089	527	6,626	1,581	6,954	2,700	208	28,157	8,854	14,522	74,218
Ratio of Applicants Accommodated to Applications Received											
1997-98	.99	.98	.99	.99	.99	.99	.99	.99	.97	.97	.98
1998-99	.99	.98	.99	.99	.99	.99	.99	.99	.97	.96	.98
1999-00	.99	.98	.98	.99	.99	.99	1.00	.99	.97	.96	.98
2000-01	.99	.99	.99	.99	.99	.99	.98	.99	.98	.97	.98
Incomplete Applications											
1997-98	583	117	857	180	579	306	41	2,930	1,134	3,838	10,565
1998-99	658	81	991	230	735	338	65	3,169	1,257	4,197	11,721
1999-00	755	93	1,060	272	792	339	55	3,557	1,371	4,345	12,639
2000-01	725	86	1,162	264	740	379	39	3,569	1,326	5,232	13,522
Ratio of Incomplete Applications to Applicants Accommodated											
1997-98	.16	.18	.13	.14	.10	.12	.18	.10	.15	.35	.16
1998-99	.17	.15	.15	.16	.11	.14	.26	.11	.15	.37	.17
1999-00	.18	.18	.15	.17	.11	.13	.20	.12	.16	.35	.17
2000-01	.18	.16	.18	.17	.11	.14	.19	.13	.15	.36	.18

¹Unduplicated application counts are derived by counting multiple applications from individuals to CSU campuses within a given term only once.

Table 75b (continued)

**Disposition of Unduplicated¹ Applications for Admission by Ethnic Group
New Postbaccalaureates/Graduates, from 1997-1998**

College Year	African American	American Indian	Asian American	Filipino	Mexican American	Other Latino	Pacific Islanders	White Non-Latino	No Response	Nonresident Aliens	Total
Denied Applicants											
1997-98	493	66	778	185	532	248	26	2,798	844	2,277	8,247
1998-99	554	53	884	217	617	290	27	2,855	917	2,264	8,678
1999-00	580	47	845	204	657	290	23	2,715	831	2,749	8,941
2000-01	484	50	722	172	561	240	18	2,064	647	2,880	7,838
Ratio of Denied Applicants to Applicants Accommodated											
1997-98	.14	.10	.12	.15	.09	.10	.11	.10	.11	.21	.12
1998-99	.14	.10	.13	.15	.10	.12	.11	.10	.11	.20	.12
1999-00	.14	.09	.12	.13	.10	.11	.09	.09	.10	.22	.12
2000-01	.12	.09	.11	.11	.08	.09	.09	.07	.07	.20	.11
Admitted Applicants											
1997-98	2,506	456	4,778	890	4,684	1,914	163	22,385	5,890	4,606	48,272
1998-99	2,627	413	4,892	1,004	5,053	1,820	156	22,947	6,419	4,981	50,312
1999-00	2,807	390	4,941	1,061	5,391	1,981	191	22,990	6,385	5,465	51,602
2000-01	2,847	393	4,699	1,125	5,652	2,076	153	22,545	6,958	6,310	52,758
Ratio of Admitted Applicants to Applicants Accommodated											
1997-98	.69	.72	.74	.70	.81	.77	.71	.79	.76	.43	.72
1998-99	.68	.76	.72	.69	.78	.74	.62	.79	.76	.44	.71
1999-00	.67	.74	.71	.68	.78	.75	.71	.78	.75	.44	.70
2000-01	.70	.75	.71	.71	.81	.77	.74	.80	.79	.43	.71
Enrolled Applicants											
1997-98	1,680	299	3,142	609	3,534	1,343	101	15,749	4,026	2,288	32,771
1998-99	1,758	302	3,253	691	3,720	1,274	122	16,184	4,343	2,526	34,173
1999-00	1,939	289	3,417	781	4,226	1,453	127	16,893	4,588	2,811	36,524
2000-01	2,006	273	3,182	810	4,373	1,547	98	16,295	4,779	3,143	36,506
Ratio of Enrolled Applicants to Admitted Applicants											
1997-98	.67	.66	.66	.68	.75	.70	.62	.70	.68	.50	.68
1998-99	.67	.73	.66	.69	.74	.70	.78	.71	.68	.51	.68
1999-00	.69	.74	.69	.74	.78	.73	.66	.73	.72	.51	.71
2000-01	.70	.69	.68	.72	.77	.75	.64	.72	.69	.50	.69

¹Unduplicated application counts are derived by counting multiple applications from individuals to CSU campuses within a given term only once.

Table 76

Average Number of CSU Campuses to which an Individual Applied,
from 1997-1998

College Year	African American	American Indian	Asian American	Filipino	Mexican American	Other Latino	Pacific Islanders	White Non-Latino	No Response	Nonresident Aliens	Total
First-Time Freshmen											
1997-98	2.0	1.6	1.6	1.5	1.8	1.8	1.6	1.6	1.6	1.2	1.6
1998-99	2.1	1.7	1.7	1.6	1.9	1.7	1.6	1.6	1.6	1.2	1.7
1999-00	2.2	1.7	1.7	1.7	1.9	1.9	1.7	1.7	1.8	1.2	1.7
2000-01	2.1	1.7	1.8	1.7	2.0	1.9	1.7	1.8	1.8	1.2	1.8
California Community College Transfers											
1997-98	1.2	1.1	1.3	1.2	1.2	1.2	1.2	1.2	1.2	1.3	1.2
1998-99	1.2	1.2	1.3	1.2	1.2	1.2	1.2	1.2	1.2	1.3	1.2
1999-00	1.2	1.2	1.3	1.2	1.2	1.2	1.2	1.2	1.2	1.3	1.2
2000-01	1.2	1.2	1.3	1.2	1.2	1.2	1.2	1.2	1.2	1.3	1.2
New Postbaccalaureates/Graduates											
1997-98	1.1	1.1	1.1	1.1	1.1	1.1	1.1	1.1	1.1	1.1	1.1
1998-99	1.1	1.1	1.1	1.1	1.1	1.1	1.1	1.1	1.1	1.1	1.1
1999-00	1.1	1.1	1.2	1.1	1.1	1.1	1.1	1.1	1.1	1.1	1.1
2000-01	1.1	1.1	1.1	1.1	1.1	1.1	1.1	1.1	1.1	1.1	1.1

Table 77

Applications for Admission by Term from 1981-1982

College Year	Number					Total
	Summer	Fall	Winter	Spring		
1981-82	8,865	202,693	14,981	67,621		294,160
1982-83	7,527	201,987	14,294	68,696		292,504
1983-84	7,915	201,352	12,740	66,132		288,139
1984-85	6,906	202,060	14,731	71,055		294,752
1985-86	8,762	216,070	15,240	69,027		309,099
1986-87	8,991	223,085	13,818	73,951		319,845
1987-88	9,259	240,170	13,980	75,712		339,121
1988-89	8,927	243,555	11,994	71,114		335,590
1989-90	9,139	246,497	14,270	75,499		345,405
1990-91	9,353	248,105	14,742	73,593		345,793
1991-92	8,910	238,865	13,811	66,271		327,857
1992-93	7,300	235,287	11,212	51,935		305,734
1993-94	5,611	232,806	11,367	60,458		310,242
1994-95	5,674	245,201	12,187	62,987		326,049
1995-96	5,057	261,053	11,626	63,029		340,765
1996-97	5,556	268,965	12,440	64,556		351,517
1997-98	6,444	277,977	12,906	67,749		365,076
1998-99	6,918	289,969	13,003	75,415		385,305
1999-00	6,657	317,234	13,047	76,123		413,061
2000-01	9,244	335,375	14,514	79,316		438,449

College Year	Ratio					Total
	Summer	Fall	Winter	Spring		
1981-82	0.030	0.690	0.051	0.229		1.000
1982-83	0.026	0.691	0.049	0.235		1.000
1983-84	0.027	0.699	0.044	0.230		1.000
1984-85	0.023	0.686	0.050	0.241		1.000
1985-86	0.028	0.699	0.047	0.223		1.000
1986-87	0.028	0.697	0.043	0.231		1.000
1987-88	0.027	0.708	0.041	0.223		1.000
1988-89	0.027	0.726	0.036	0.212		1.000
1989-90	0.026	0.714	0.041	0.219		1.000
1990-91	0.027	0.717	0.043	0.213		1.000
1991-92	0.027	0.729	0.042	0.202		1.000
1992-93	0.024	0.770	0.037	0.170		1.000
1993-94	0.018	0.750	0.037	0.195		1.000
1994-95	0.017	0.752	0.037	0.193		1.000
1995-96	0.015	0.766	0.034	0.185		1.000
1996-97	0.016	0.765	0.035	0.184		1.000
1997-98	0.018	0.761	0.035	0.186		1.000
1998-99	0.018	0.753	0.034	0.196		1.000
1999-00	0.016	0.768	0.032	0.184		1.000
2000-01	0.021	0.765	0.033	0.181		1.000

Note: The above fall figures include returning applicants as well as applications from individuals to more than one CSU campus.

Table 78

Applications and Admissions Report by Campus and Student Level, Fall 2000

Student Level	Applications Received	Unaccommodated Applicants			Accommodated	Incomplete	Total Denied	Total Admitted	Total Enrolled
		Unaccommodated Redirected	Not Redirected	Total Unaccommodated					
Bakersfield									
First-Time Freshmen	1,689	0	0	0	1,689	392	186	1,111	563
Undergraduate Transfers	1,288	0	0	0	1,288	298	68	922	743
Postbacc./Graduates	704	0	0	0	704	71	10	623	463
Transitory	92	0	0	0	92	0	4	88	82
Unknown	1	0	0	0	1	0	1	0	0
Totals	3,774	0	0	0	3,774	761	269	2,744	1,851
Chico									
First-Time Freshmen	7,419	16	117	133	7,286	985	371	6,062	1,981
Undergraduate Transfers	3,586	1	33	34	3,552	834	184	2,568	1,792
Postbacc./Graduates	1,366	0	0	0	1,366	201	96	1,045	815
Transitory	202	0	0	0	202	3	0	199	167
Unknown	0	0	0	0	0	0	0	0	0
Totals	12,573	17	150	167	12,406	2,023	651	9,874	4,755
Dominguez Hills									
First-Time Freshmen	3,452	0	2	2	3,450	2,230	502	715	528
Undergraduate Transfers	2,847	0	0	0	2,847	899	258	1,690	1,270
Postbacc./Graduates	2,403	0	0	0	2,403	278	244	1,881	1,290
Transitory	359	0	0	0	359	0	0	359	241
Unknown	4	0	0	0	4	3	0	1	0
Totals	9,065	0	2	2	9,063	3,410	1,004	4,646	3,329
Fresno									
First-Time Freshmen	6,275	0	487	487	5,788	1,414	643	4,218	1,941
Undergraduate Transfers	3,280	0	139	139	3,141	884	279	2,117	1,660
Postbacc./Graduates	1,904	0	129	129	1,775	267	134	1,503	1,122
Transitory	1,323	0	1	1	1,322	118	2	1,203	1,126
Unknown	0	0	0	0	0	0	0	0	0
Totals	12,782	0	756	756	12,026	2,683	1,058	9,041	5,849
Fullerton									
First-Time Freshmen	11,818	0	21	21	11,797	2,361	1,284	8,173	2,772
Undergraduate Transfers	7,617	0	14	14	7,603	2,272	1,160	4,185	2,932
Postbacc./Graduates	3,650	0	5	5	3,645	724	534	2,392	1,622
Transitory	1,228	0	0	0	1,228	1	3	1,224	1,206
Unknown	0	0	0	0	0	0	0	0	0
Totals	24,313	0	40	40	24,273	5,358	2,981	15,974	8,532
Hayward									
First-Time Freshmen	3,259	0	0	0	3,259	851	387	2,006	710
Undergraduate Transfers	3,012	0	0	0	3,012	968	277	1,731	1,281
Postbacc./Graduates	2,181	0	0	0	2,181	382	298	1,407	851
Transitory	265	0	0	0	265	3	0	261	196
Unknown	0	0	0	0	0	0	0	0	0
Totals	8,717	0	0	0	8,717	2,204	962	5,405	3,038
Humboldt									
First-Time Freshmen	3,711	0	0	0	3,711	833	165	2,713	779
Undergraduate Transfers	1,915	0	0	0	1,915	584	156	1,175	805
Postbacc./Graduates	700	0	0	0	700	97	130	464	346
Transitory	238	0	0	0	238	0	0	238	186
Unknown	0	0	0	0	0	0	0	0	0
Totals	6,564	0	0	0	6,564	1,514	451	4,590	2,116
Long Beach									
First-Time Freshmen	19,948	0	1,077	1,077	18,871	6,574	1,930	11,430	3,368
Undergraduate Transfers	9,119	0	390	390	8,729	3,220	1,302	4,565	2,899
Postbacc./Graduates	4,627	0	169	169	4,458	924	774	2,761	1,838
Transitory	170	0	0	0	170	0	0	170	96
Unknown	0	0	0	0	0	0	0	0	0
Totals	33,864	0	1,636	1,636	32,228	10,718	4,006	18,926	8,201

Note: The above figures include applications from individuals to more than one CSU campus, but do not include returning applicants. Only applicants classified as transitory both at time of application and at time of enrollment are included in the transitory enrollment totals.

Table 78 (continued)

Applications and Admissions Report by Campus and Student Level, Fall 2000

Student Level	Applications Received	Unaccommodated Applicants			Accommodated	Incomplete	Total Denied	Total Admitted	Total Enrolled
		Unaccommodated Redirected	Not Redirected	Total Unaccommodated					
Los Angeles									
First-Time Freshmen	7,803	0	0	0	7,803	1,904	1,117	3,924	1,237
Undergraduate Transfers	4,288	0	0	0	4,288	1,402	650	1,872	1,263
Postbacc./Graduates	2,930	0	0	0	2,930	474	290	1,830	1,132
Transitory	290	0	0	0	290	0	1	289	199
Unknown	0	0	0	0	0	0	0	0	0
Totals	15,311	0	0	0	15,311	3,780	2,058	7,915	3,831
Maritime Academy									
First-Time Freshmen	263	0	0	0	263	93	35	135	99
Undergraduate Transfers	82	0	0	0	82	13	9	60	51
Postbacc./Graduates	7	0	0	0	7	1	0	6	6
Transitory	0	0	0	0	0	0	0	0	0
Unknown	0	0	0	0	0	0	0	0	0
Totals	352	0	0	0	352	107	44	201	156
Monterey Bay									
First-Time Freshmen	2,319	0	0	0	2,319	364	215	1,740	445
Undergraduate Transfers	1,032	0	0	0	1,032	350	103	579	376
Postbacc./Graduates	217	0	0	0	217	25	36	144	124
Transitory	71	0	0	0	71	3	0	68	52
Unknown	3	0	0	0	3	2	1	0	0
Totals	3,642	0	0	0	3,642	744	355	2,531	997
Northridge									
First-Time Freshmen	9,906	0	0	0	9,906	1,218	944	7,744	2,842
Undergraduate Transfers	7,812	0	0	0	7,812	2,764	701	4,347	3,214
Postbacc./Graduates	3,838	0	0	0	3,838	536	218	3,084	1,793
Transitory	230	0	0	0	230	2	2	226	172
Unknown	0	0	0	0	0	0	0	0	0
Totals	21,786	0	0	0	21,786	4,520	1,865	15,401	8,021
Pomona									
First-Time Freshmen	10,107	0	0	0	10,107	2,082	909	7,115	2,769
Undergraduate Transfers	3,626	0	0	0	3,626	1,492	388	1,745	1,264
Postbacc./Graduates	1,240	0	0	0	1,240	368	197	672	458
Transitory	263	0	0	0	263	1	0	262	162
Unknown	1	0	0	0	1	1	0	0	0
Totals	15,237	0	0	0	15,237	3,944	1,494	9,794	4,653
Sacramento									
First-Time Freshmen	7,991	0	0	0	7,991	4,127	0	3,864	2,159
Undergraduate Transfers	6,269	0	0	0	6,269	2,145	0	4,124	3,189
Postbacc./Graduates	3,558	0	0	0	3,558	1,069	0	2,489	1,587
Transitory	172	0	0	0	172	36	0	136	122
Unknown	0	0	0	0	0	0	0	0	0
Totals	17,990	0	0	0	17,990	7,377	0	10,613	7,057
San Bernardino									
First-Time Freshmen	4,118	0	0	0	4,118	1,030	111	2,862	1,198
Undergraduate Transfers	2,949	1	0	1	2,948	714	230	2,005	1,516
Postbacc./Graduates	2,246	0	0	0	2,246	321	56	1,713	1,226
Transitory	186	0	0	0	186	0	0	186	154
Unknown	0	0	0	0	0	0	0	0	0
Totals	9,499	1	0	1	9,498	2,065	397	6,766	4,094
San Diego									
First-Time Freshmen	21,824	112	1,271	1,383	20,441	1,470	7,105	13,249	3,650
Undergraduate Transfers	8,583	102	543	645	7,938	828	2,815	4,940	2,653
Postbacc./Graduates	5,839	0	220	220	5,619	1,324	1,496	3,019	1,904
Transitory	204	0	0	0	204	1	0	203	129
Unknown	0	0	0	0	0	0	0	0	0
Totals	36,450	214	2,034	2,248	34,202	3,623	11,416	21,411	8,336

Note: The above figures include applications from individuals to more than one CSU campus, but do not include returning applicants. Only applicants classified as transitory both at time of application and at time of enrollment are included in the transitory enrollment totals.

Table 78 (continued)

Applications and Admissions Report by Campus and Student Level, Fall 2000

Student Level	Applications Received	Unaccommodated Applicants			Accommodated	Incomplete	Total Denied	Total Admitted	Total Enrolled
		Unaccommodated Redirected	Not Redirected	Total Unaccommodated					
San Francisco									
First-Time Freshmen	11,065	0	91	91	10,974	3,091	585	7,389	2,042
Undergraduate Transfers	8,023	0	49	49	7,974	2,023	693	5,307	2,615
Postbacc./Graduates	5,791	0	112	112	5,679	1,190	1,449	3,152	2,007
Transitory	483	0	1	1	482	5	0	478	457
Unknown	0	0	0	0	0	0	0	0	0
Totals	25,362	0	253	253	25,109	6,309	2,727	16,326	7,121
San Jose									
First-Time Freshmen	11,445	0	0	0	11,445	2,152	1,077	8,215	2,583
Undergraduate Transfers	7,388	0	0	0	7,388	2,897	694	3,796	2,556
Postbacc./Graduates	4,882	0	1	1	4,881	1,340	662	2,880	1,811
Transitory	175	0	0	0	175	0	0	175	118
Unknown	0	0	0	0	0	0	0	0	0
Totals	23,890	0	1	1	23,889	6,389	2,433	15,066	7,068
San Luis Obispo									
First-Time Freshmen	16,729	0	7	7	16,722	5,777	7,403	3,542	3,111
Undergraduate Transfers	3,998	1	22	23	3,975	1,477	1,632	866	755
Postbacc./Graduates	865	0	3	3	862	230	143	489	329
Transitory	139	0	4	4	135	1	0	134	118
Unknown	0	0	0	0	0	0	0	0	0
Totals	21,731	1	36	37	21,694	7,485	9,178	5,031	4,313
San Marcos									
First-Time Freshmen	2,999	0	0	0	2,999	748	354	1,897	576
Undergraduate Transfers	2,340	0	0	0	2,340	608	396	1,336	934
Postbacc./Graduates	831	0	0	0	831	58	34	739	572
Transitory	3	0	0	0	3	0	0	3	3
Unknown	0	0	0	0	0	0	0	0	0
Totals	6,173	0	0	0	6,173	1,414	784	3,975	2,085
Sonoma									
First-Time Freshmen	4,700	0	0	0	4,700	205	327	4,168	1,093
Undergraduate Transfers	2,240	0	0	0	2,240	497	285	1,433	865
Postbacc./Graduates	755	0	0	0	755	137	11	551	357
Transitory	99	0	0	0	99	2	0	97	84
Unknown	0	0	0	0	0	0	0	0	0
Totals	7,794	0	0	0	7,794	841	623	6,249	2,399
Stanislaus									
First-Time Freshmen	1,740	0	0	0	1,740	433	43	1,264	625
Undergraduate Transfers	1,551	0	0	0	1,551	302	14	1,235	935
Postbacc./Graduates	912	0	0	0	912	66	26	820	628
Transitory	28	0	0	0	28	1	0	27	23
Unknown	21	0	0	0	21	20	1	0	0
Totals	4,252	0	0	0	4,252	822	84	3,346	2,211
CalStateTEACH									
Postbacc./Graduates	624	0	0	0	624	114	22	488	346
Unknown	0	0	0	0	0	0	0	0	0
Totals	624	0	0	0	624	114	22	488	346
Systemwide Totals									
First-Time Freshmen	170,580	128	3,073	3,201	167,379	40,334	25,693	103,536	37,071
Undergraduate Transfers	92,845	105	1,190	1,295	91,550	27,471	12,294	52,598	35,568
Postbacc./Graduates	52,070	0	639	639	51,431	10,197	6,860	34,152	22,627
Transitory	6,220	0	6	6	6,214	177	12	6,026	5,093
Unknown	30	0	0	0	30	26	3	1	0
Totals	321,745	233	4,908	5,141	316,604	78,205	44,862	196,313	100,359
Percent of Applicants	100.0%	0.1%	1.5%	1.6%	98.4%	24.3%	13.9%	61.0%	31.2%

Note: The above figures include applications from individuals to more than one CSU campus, but do not include returning applicants. Only applicants classified as transitory both at time of application and at time of enrollment are included in the transitory enrollment totals. San Luis Obispo's unaccommodated totals were adjusted to reflect the reported total applications received minus accommodated outcomes.

This page intentionally left blank.