

# Student Profile

**Section II**



## Introduction

The Student Profile section provides a historical synopsis of the California State University student population regarding the following dimensions: total and full-time enrollments in the public segments of California higher education (the California State University, the University of California, and the California Community Colleges); student enrollments by enrollment status (e.g., first-time, transfers, continuing) and student level; and descriptive statistics on the individual characteristics of CSU students, starting with historical data on enrollment and average units attempted by gender. Age and gender distributions are also presented for postbaccalaureate and graduate students, undergraduate students, and total fall enrollments. Enrollments by ethnic group and campus, ethnic group by student level, and a history of ethnic group enrollments by level are also displayed.

Included with individual characteristics are historical summaries of enrollments by residence status and place of residence, as well as by citizenship status and country of citizenship.

Unless otherwise noted, CSU Summer Arts, CalStateTEACH, and International Programs are not included in enrollment data. Likewise, prior to fall 1998, the CSU Statewide Nursing Program figures are not included in enrollment data. After fall 1998, however, the Statewide Nursing Program is included in the figures for CSU Dominguez Hills.

### Summary

#### California Public Institutions

Since 1960, the CSU has accounted for as little as 16.9 percent (fall 1981) and as much as 24.1 percent (fall 1968, 1969, and 1970) of students enrolled in California's publicly financed institutions of higher education. Since 1990, the CSU has enrolled an average of roughly 19 percent of all students attending public institutions of higher learning in the state. In fall 2000, CSU enrollment accounted for 17.4 percent of all students in California public colleges and universities. However, this decline in percentage was not a result of falling enrollments. On the contrary, enrollments were up at all three public segments of California higher education.

Like total enrollments, fall 2000 full-time higher education enrollment for the state continued its recovery from a downward trend that began after fall 1990. Although community college full-time enrollment fluctuated during this period, it grew considerably in fall 2000. Continuing the trend, full-time enrollment at the University of California was also up in fall 2000. Even more significantly, the number of full-timers at the CSU began a rebound in fall 1995 that propelled Fall 2000 full-time enrollment to the highest level in over 25 years!

#### Student Level

The distribution of CSU students by level has changed substantially since 1960. Part of the change is attributable to a shift in the mix of new students (e.g., first-time freshmen vs. undergraduate transfers), and part of the change is attributable to a shift in the mix of new and continuing students. Until 1992, the most significant change was the disproportionate growth of the senior class. From 1960 to 1970, the percentage of CSU students who were seniors rose from 18.6 percent to 25.1 percent. During this period, the freshman population declined from 21.2 percent to 14.4 percent, and the sophomore population declined from 14.1 percent to 10.5 percent. From 1970 to 1980, the proportion of seniors remained stable, while the percentage of lower division students (freshmen and sophomores) grew, and the proportion of juniors declined. In 1980, the proportion of seniors began to grow again. Between 1960 and 1993, seniors grew from 18.6 percent of CSU fall enrollment to 35 percent. Since fall 1994, the percentage of seniors has steadily declined to 29.9 percent. Freshman enrollment that was 21.2 percent in fall 1960 declined to 13.1 percent in fall 1993 and has since climbed to 18.2 percent of fall 2000 enrollment (the highest percentage since 1965). Since fall 1960, sophomores have declined from 14.1 percent to 9.6 percent. Juniors rose to 28.7 percent in 1971 and have fluctuated in recent years as the proportion of continuing and returning students increased. In fall 2000, juniors accounted for nearly 22 percent of CSU enrollment. From 1960 to 1983, graduates made up 22 to 24 percent of fall CSU enrollment. Currently, 20.7 percent of CSU students have postbaccalaureate or graduate status, up from 18.9 percent in fall 1994.

#### Part-Time and Full-Time Status

The percentage of CSU students enrolled with a full-time unit load (defined as 12 or more student credit units per term at the undergraduate level and 9 or more student credit units per term at the graduate level) remained relatively stable from the early 1970s to the mid-1990s. From fall 1987 to fall 1991 the percentages of full-time and part-time students were fixed at 64 vs. 36 percent. Recently, the percentage of full-timers has been increasing, and in fall 2000 it stood at 70 percent.

#### Gender

By 1978, the proportion of CSU students who were women reached 50 percent, having increased gradually from 40 percent in 1960. Over the last 20 years, the proportion of women gradually increased to 59 percent of the CSU student body in fall 2000, an all-time high.

### Age

The average age of CSU undergraduates was 22.9 years in 1967. The average age of undergraduates reached 24.1 in 1975 and has remained around 24 since then. In fall 2000, the average age of undergraduates was 24 years.

Graduate students, on average, are considerably older than their undergraduate counterparts. In fall 1967, for instance, the mean age for graduate students was 31.3, an 8-year difference. The average age of graduate students fell to a low of 29.9 in 1971, increasing steadily to 33.7 in fall 1990. The average age of graduate students has not changed much since then and stands at 33.8 in fall 2000.

Currently, the mean and median ages of all CSU students are 26 and 23, respectively. The mean age of all students has varied only slightly over the past 10 years; for example, in fall 1989 it was 26 years. During that same time (since fall 1989), the median age of all students has been 23-24 years. All these data suggest there has been some increase in the number of older students entering the CSU at both the undergraduate and graduate levels.

### Nonwhite Undergraduate Enrollment Trends

Historical data on the racial/ethnic composition of the CSU's undergraduate enrollment reveal one dominant trend: a substantial increase in the percentage of nonwhite undergraduates across all enrollment categories. For instance, among those who self-identified their racial/ethnic status, students from nonwhite groups grew from 31.4 to 55.3 percent between fall 1985 and fall 2000, a growth of over 75 percent.

In general, both the number and proportion of undergraduate students from minority groups increased since 1985. African American students grew from 14,414 in fall 1985 (6 percent of undergraduate enrollment identified by racial/ethnic status) to 17,130 in fall 2000 (7 percent). American Indians, a group whose enrollment has fluctuated in recent years, declined slightly from 2,957 to 2,531. Asian American students grew from 26,713 (11.2 percent) in fall 1985 to 39,815 (16.3 percent) in fall 2000. The number of Filipino students more than doubled, rising from 5,521 in fall 1985 to 14,135 in fall 2000. Nearly one-quarter of undergraduate enrollment identified by racial/ethnic status in fall 2000 consisted of Mexican American and Other Latino students; their numbers revealed a striking increase from 24,210 in fall 1985 to 60,164. Even Pacific Islanders have exhibited 30 percent growth since 1985, increasing from 1,121 to 1,452 undergraduate students.

In summary, African American, Asian American, Filipino, Mexican American, Other Latino, and Pacific Islander students have increased their numbers in the CSU during the past 15 years. Conversely, the number and proportion of White, non-Latinos has declined 33 percent in this period (down to 109,287 from 163,826).

### Origin of Students

In this section, residence is defined by fee status. California residents pay resident fees. Out-of-state students pay nonresident fees. Students who pay nonresident fees fall into three categories: those from other U.S. states, U.S. possessions, or from foreign countries. Resident and nonresident students are listed differently in the accompanying tables.

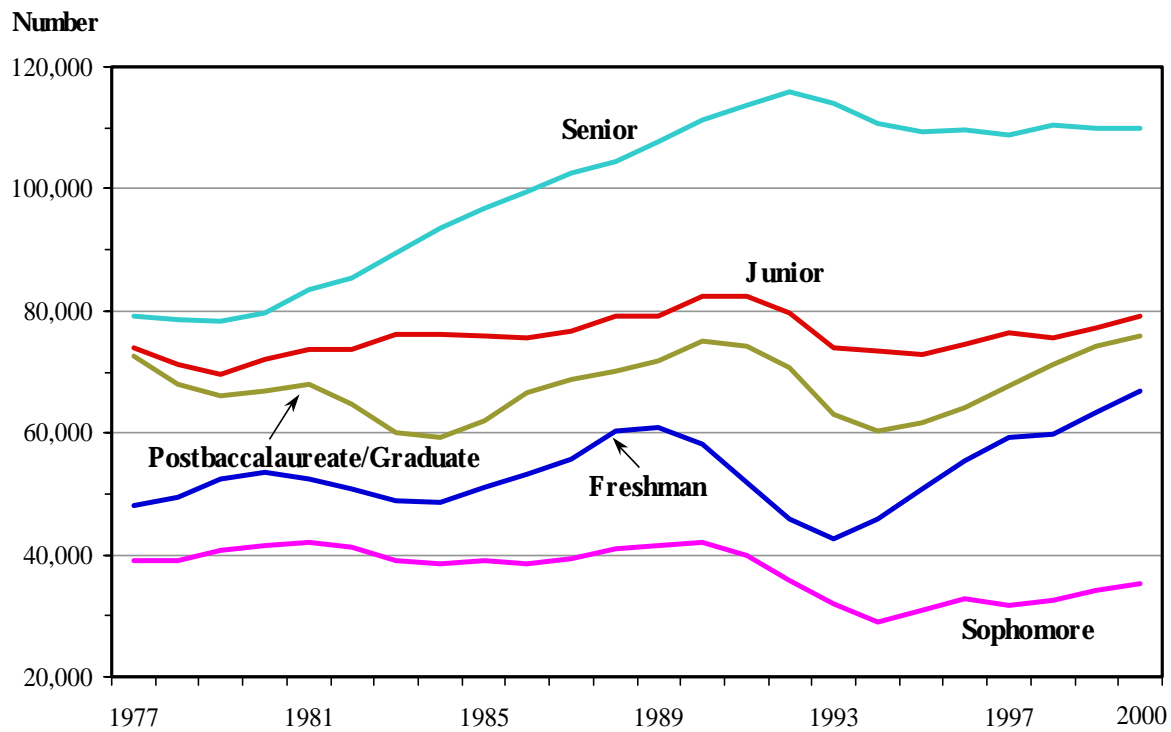
- Students who paid resident fees are listed by the California counties in which they resided at the time of their application to the CSU.
- Students who paid nonresident fees are listed by the U.S. state, U.S. possession, or foreign country in which they resided at the time of application.

The overwhelming majority of CSU students are California residents. In fall 2000, 356,802 (97.1 percent of the 367,363 students enrolled) were defined as residents for fee-paying purposes. Of the remainder, 2,660 were from other states, 31 were from U.S. possessions, and 7,870 were from a foreign country.

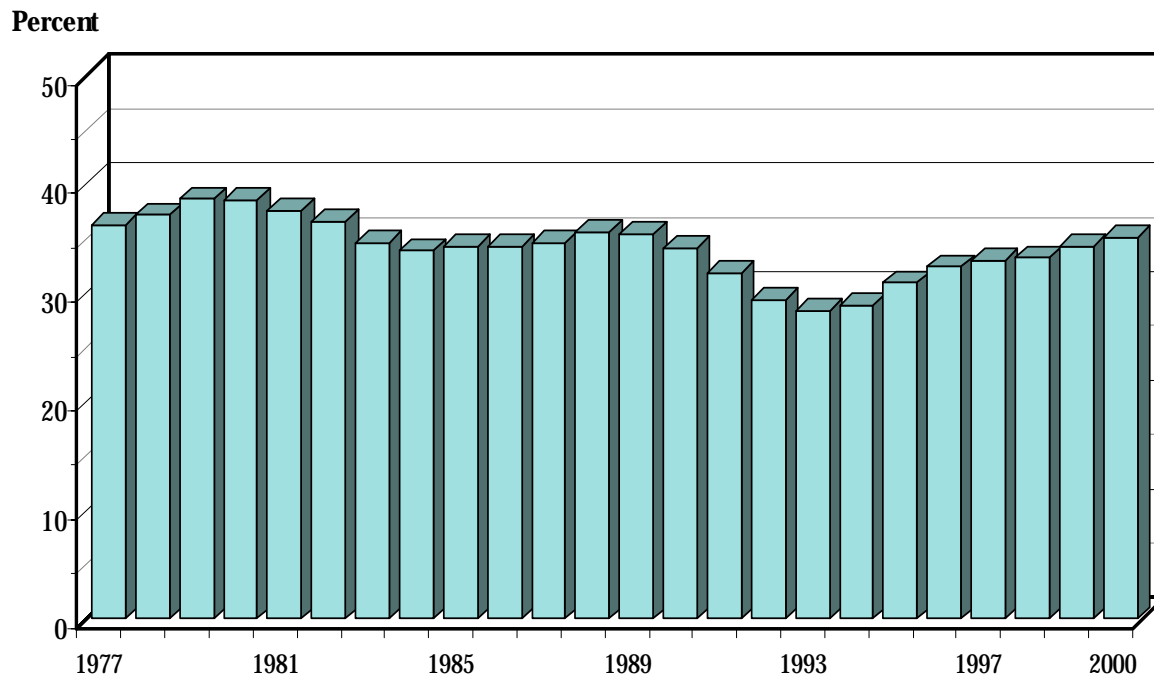
Students are also defined by citizenship status. In some cases, noncitizens are listed by their country of origin. Here it is important to remember that citizenship alone does not determine fee status.

Foreign immigration to California has been a stimulus to growth in the number of noncitizens enrolling in the CSU. In fall 1985, 38,004 students were noncitizens (e.g., visa students, resident aliens, and refugees). By fall 2000, 54,461, or about 15 percent of total CSU enrollment, were noncitizens. Visa students were the noncitizen group evidencing the most substantial growth since fall 1985 (70 percent). Representing slightly more than two-thirds of the noncitizen enrollment, resident alien enrollment grew from 27,687 students in fall 1985 to 37,403 in fall 2000 (an increase of 35 percent).

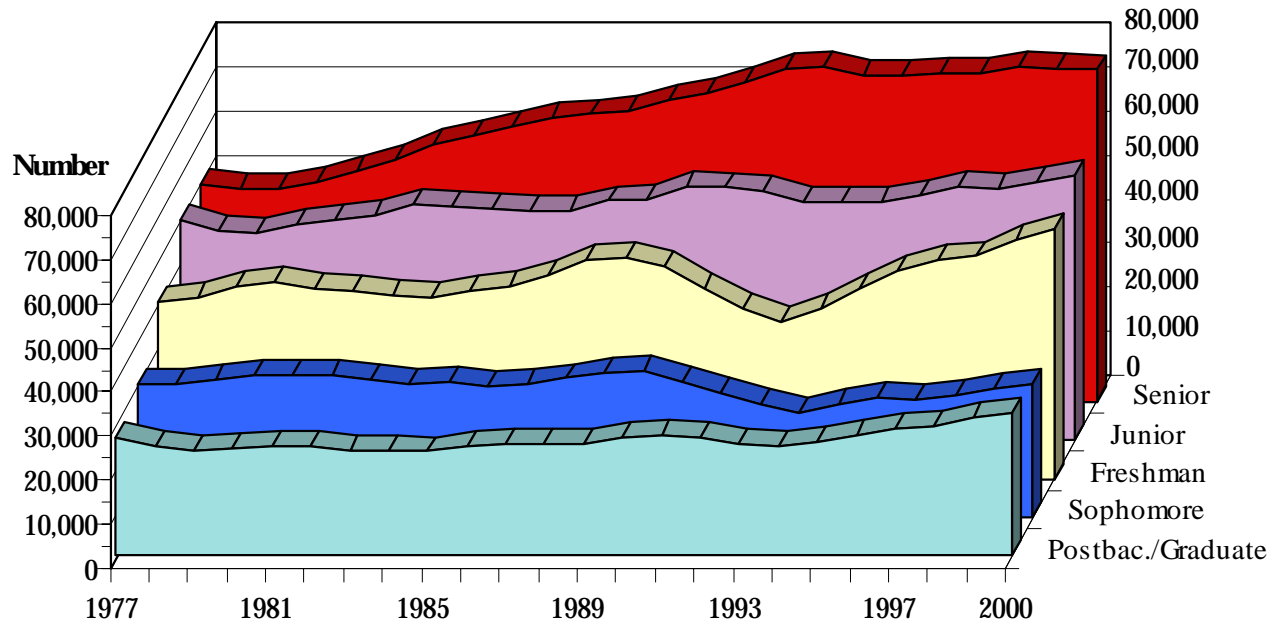
**Figure 3**  
**CSU Enrollment by Student Level, Fall 1977 to Fall 2000**



**Figure 4**  
**CSU Lower Division Enrollment as a Percent of Total Undergraduate Enrollment, Fall 1977 to Fall 2000**



**Figure 5**  
**CSU Full-Time Enrollment by Student Level, Fall 1977 to Fall 2000**



**Figure 6**  
**CSU Nonwhite Undergraduate Enrollment by Ethnicity, Fall 1977 to Fall 2000**

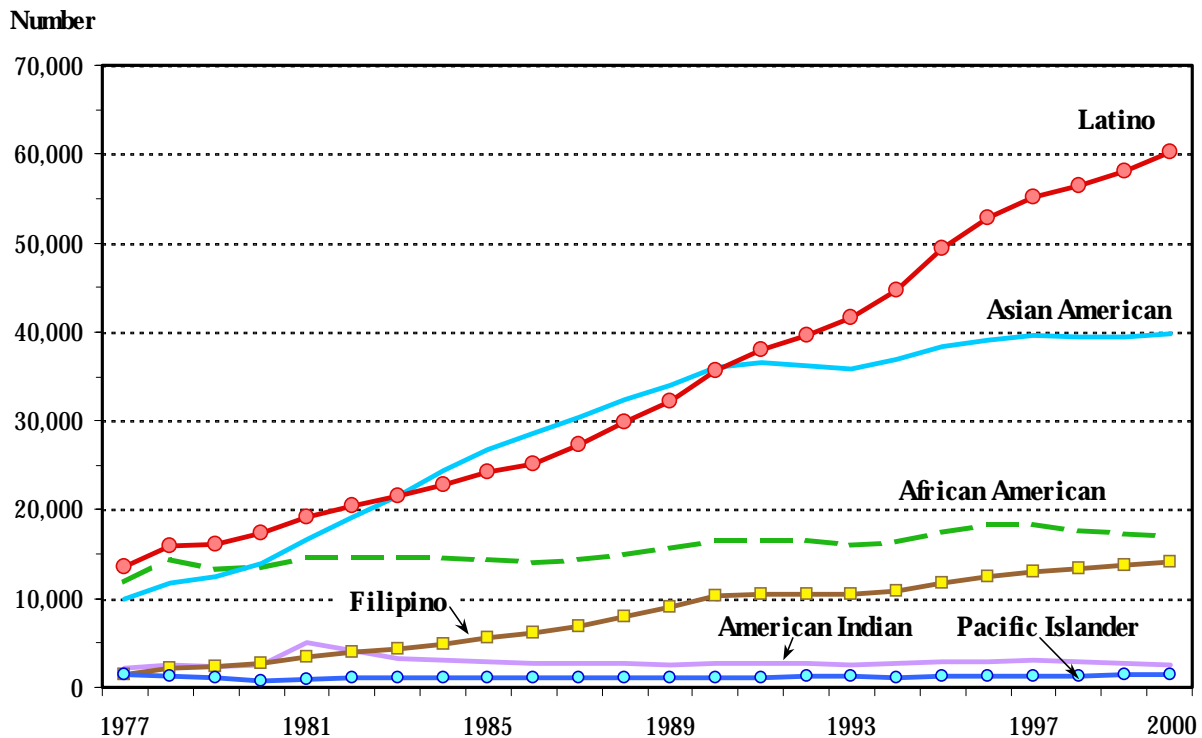


Table 29

Enrollment in California Public Colleges and Universities, from Fall 1960

Fall	California State University		California Community Colleges		University of California		Total Enrollment
	Enrollment	Percent	Enrollment	Percent	Enrollment	Percent	
1960	95,081	21.9	289,898	66.8	49,169	11.3	434,148
1961	105,987	22.8	305,201	65.6	54,265	11.7	465,453
1962	118,057	23.0	336,704	65.6	58,616	11.4	513,377
1963	133,108	23.5	368,008	65.1	64,682	11.4	565,620
1964	148,956	23.6	411,338	65.1	71,267	11.3	631,561
1965	154,927	22.3	459,445	66.2	79,997	11.4	693,809
1966	169,520	22.8	487,458	65.5	87,087	11.7	744,065
1967	185,601	23.1	521,695	65.0	95,292	11.9	802,588
1968	211,568	24.1	568,146	64.7	98,780	11.2	878,494
1969	224,837	24.1	602,938	64.6	106,035	11.4	933,810
1970	241,559	24.1	652,133	65.0	109,033	10.9	1,002,725
1971	262,081	21.1	873,353	70.2	109,129	8.7	1,243,467
1972	276,737	21.1	921,900	70.3	113,270	8.6	1,311,907
1973	286,633	20.2	1,010,900	71.4	118,854	8.4	1,416,387
1974	291,542	18.8	1,137,700	73.3	122,456	7.9	1,551,698
1975	310,891	18.0	1,287,400	74.6	128,486	7.4	1,726,777
1976	303,734	18.0	1,257,800	74.5	127,403	7.5	1,688,937
1977	312,380	17.7	1,321,800	75.1	125,902	7.2	1,760,082
1978	306,175	19.2	1,159,800	72.8	127,664	8.0	1,593,639
1979	306,801	18.2	1,248,500	74.0	131,836	7.8	1,687,137
1980	313,850	17.1	1,383,300	75.5	135,821	7.4	1,832,971
1981	319,565	16.9	1,430,800	75.7	138,726	7.3	1,889,091
1982	315,814	17.4	1,354,900	74.9	139,138	7.7	1,809,852
1983	313,900	18.5	1,239,381	73.1	141,289	8.3	1,694,570
1984	316,005	19.7	1,144,300	71.3	144,589	9.0	1,604,894
1985	324,626	19.7	1,175,500	71.3	147,957	9.0	1,648,083
1986	333,424	19.5	1,225,400	71.6	152,065	8.9	1,710,889
1987	342,776	19.4	1,264,409	71.7	157,331	8.9	1,764,516
1988	355,106	19.2	1,336,275	72.1	161,522	8.7	1,852,903
1989	360,838	18.7	1,407,430	72.8	164,605	8.5	1,932,873
1990	369,053	19.1	1,394,563	72.3	166,547	8.6	1,930,163
1991	361,904	19.0	1,374,049	72.2	166,247	8.7	1,902,200
1992	347,693	18.5	1,366,706	72.7	165,804	8.8	1,880,203
1993	325,639	18.8	1,243,508	71.8	163,102	9.4	1,732,249
1994	319,368	18.8	1,219,036	71.7	162,304	9.5	1,700,708
1995	325,604	19.6	1,174,904	70.6	163,704	9.8	1,644,212
1996	336,803	18.6	1,303,700	72.1	166,718	9.2	1,807,221
1997	343,779	19.3	1,267,434	71.2	169,862	9.5	1,781,075
1998	349,804	18.9	1,331,762	71.8	173,643	9.3	1,855,209
1999	358,947	19.7	1,281,395	70.5	178,410	9.8	1,818,752
2000	367,363	17.4	1,558,450	73.9	183,355	8.7	2,109,168

Note: Above statistics do not include enrollment in Summer Arts, International Programs, or CalStateTEACH.

Sources: California Postsecondary Education Commission Student Profile  
 California Postsecondary Education Commission online data access Higher Education Enrollments report by segment–fall  
 CSU Analytic Studies, Enrollment Reporting System, Student

**Table 30**  
**Full-Time Enrollment in California Public Colleges and Universities, from Fall 1973**

Fall	California State University		California Community Colleges		University of California		Total Enrollment
	Enrollment	Percent	Enrollment	Percent	Enrollment	Percent	
1973	188,544	31.2	303,100	50.2	112,416	18.6	604,060
1974	187,522	29.9	324,300	51.7	115,843	18.5	627,665
1975	197,287	28.6	371,500	53.8	121,750	17.6	690,537
1976	193,082	30.1	328,100	51.2	119,646	18.7	640,828
1977	196,935	31.2	316,200	50.1	118,112	18.7	631,247
1978	192,545	32.3	285,100	47.8	119,315	20.0	596,960
1979	194,361	32.5	282,800	47.2	121,512	20.3	598,673
1980	201,014	32.3	295,900	47.5	126,300	20.3	623,214
1981	203,487	31.8	307,900	48.1	128,613	20.1	640,000
1982	205,927	31.8	311,600	48.1	129,667	20.0	647,194
1983	209,628	33.2	290,154	46.0	130,913	20.8	630,695
1984	209,632	34.4	265,900	43.6	133,762	22.0	609,294
1985	212,538	34.8	261,500	42.8	136,479	22.4	610,517
1986	215,465	34.7	265,500	42.7	140,745	22.6	621,710
1987	219,707	34.4	275,347	43.1	144,337	22.6	639,391
1988	227,609	34.5	282,934	42.9	149,109	22.6	659,652
1989	231,947	33.7	305,350	44.3	151,639	22.0	688,936
1990	237,083	31.5	360,860	47.9	154,747	20.6	752,690
1991	231,455	31.6	345,461	47.2	155,580	21.2	732,496
1992	226,074	30.7	354,797	48.1	156,029	21.2	736,900
1993	217,660	30.3	347,689	48.4	152,819	21.3	718,168
1994	216,405	31.6	315,933	46.1	152,617	22.3	684,955
1995	223,302	32.8	304,304	44.8	152,320	22.4	679,926
1996	232,794	33.3	310,680	44.4	155,740	22.3	699,214
1997	238,364	33.5	313,707	44.2	158,380	22.3	710,451
1998	241,841	34.0	308,845	43.3	161,393	22.7	712,079
1999	249,851	34.8	301,608	42.0	166,968	23.2	718,427
2000	255,405	33.9	326,506	43.3	171,387	22.8	753,298

Note: Above statistics do not include enrollment in Summer Arts, International Programs, or CalStateTEACH.

Sources: CSU, Analytic Studies, Enrollment Reporting System, Student  
 California Postsecondary Education Commission Student Profile  
 California Postsecondary Education Commission on-line data access Higher Education Enrollments report by  
 full/part-time status-fall  
 University of California IPEDS reports

Table 31

**California State University Enrollment, Fall 2000 Profile,  
by County of Origin and Institution of Origin**

<b>Fall 2000 Enrollment</b>	<b>Number</b>	<b>Percent of Total Enrollment</b>
All California counties	357,903	97.1
<b>Top 10 California Counties</b>		
Los Angeles	96,545	27.0
Orange	32,117	9.0
San Diego	29,376	8.2
Santa Clara	20,988	5.9
Alameda	16,777	4.7
Sacramento	16,008	4.5
San Bernardino	15,851	4.4
Fresno	13,455	3.8
San Francisco	12,682	3.5
Riverside	9,591	2.7
All Other Counties	94,513	26.4
Total	357,903	100.0
<b>First-Time Freshmen by Institution of Origin</b>		
	<b>Number</b>	<b>Percent of First-Time Freshmen</b>
California Public High Schools	30,936	83.5
California Private High Schools	4,584	12.4
Other U.S. States	1,044	2.8
Foreign and Unknown	507	1.4
Total	37,071	100.0
<b>Undergraduate Transfers by Institution of Origin</b>		
	<b>Number</b>	<b>Percent of Undergraduate Transfers</b>
California State University	1,934	5.4
California Community Colleges	30,184	84.9
University of California	395	1.1
California Private Institutions	583	1.6
Other U.S. States	1,891	5.3
Foreign and Unknown	581	1.6
Total	35,568	100.0
<b>New Postbaccalaureate/ Graduate Students by Institution of Origin</b>		
	<b>Number</b>	<b>Percent of New Postbaccalaureates/ Graduates</b>
California State University	12,378	54.7
University of California	2,901	12.8
California Private Institutions	1,839	8.1
Other U.S. States	3,488	15.4
Foreign and Unknown	2,021	8.9
Total	22,627	100.0

Note: Residence is based on fee status.

Summer Arts, International Programs, and CalStateTEACH are not included in First-Time Freshmen or Undergraduate Transfers.

"Foreign and Unknown" includes U.S. possessions, foreign countries, and unknown.

**Table 32**  
**Total Enrollment by Class Level, Fall 2000 Profile**  
**(By Campus)**

Campus	Freshman	Sophomore	Junior	Senior	Postbaccalaureate/ Graduate	Total
Bakersfield	1,065	698	1,213	1,833	1,588	6,397
Chico	3,402	1,966	3,975	4,564	2,005	15,912
Dominguez Hills	1,204	674	2,573	3,282	5,115	12,848
Fresno	4,193	2,013	4,008	5,199	3,643	19,056
Fullerton	5,807	2,316	7,278	7,984	4,996	28,381
Hayward	1,565	983	2,673	4,116	3,368	12,705
Humboldt	1,323	857	1,655	2,634	964	7,433
Long Beach	5,872	3,241	6,180	9,860	5,765	30,918
Los Angeles	2,863	1,617	2,891	6,105	6,117	19,593
Maritime Academy	222	128	100	187	16	653
Monterey Bay	737	304	566	760	257	2,624
Northridge	4,492	2,706	6,969	8,386	6,513	29,066
Pomona	4,776	2,167	3,272	6,221	1,988	18,424
Sacramento	4,127	1,826	6,360	8,029	5,372	25,714
San Bernardino	2,341	1,392	2,911	3,629	4,636	14,909
San Diego	6,209	3,479	6,856	9,114	5,951	31,609
San Francisco	4,212	2,211	5,911	8,031	6,461	26,826
San Jose	4,504	2,061	5,782	8,364	5,987	26,698
San Luis Obispo	4,338	2,568	3,178	5,783	1,010	16,877
San Marcos	962	535	1,569	1,939	1,251	6,256
Sonoma	1,630	875	1,640	2,066	1,191	7,402
Stanislaus	1,070	754	1,605	1,924	1,709	7,062
All Campuses	66,914	35,371	79,165	110,010	75,903	367,363
CalStateTEACH	—	—	—	—	588	588
Systemwide	66,914	35,371	79,165	110,010	76,491	367,951

**(Systemwide, from Fall 1973)**

Fall	Freshman	Sophomore	Junior	Senior	Postbaccalaureate/ Graduate	Total
1973	42,113	31,616	75,513	73,888	63,503	286,633
1974	43,479	35,890	72,239	74,130	65,804	291,542
1975	45,127	39,297	75,774	78,853	71,840	310,891
1976	45,814	36,941	73,856	77,251	69,872	303,734
1977	47,988	39,038	73,815	79,051	72,488	312,380
1978	49,329	39,208	71,207	78,516	67,915	306,175
1979	52,464	40,643	69,579	78,198	65,917	306,801
1980	53,641	41,615	71,970	79,622	67,002	313,850
1981	52,369	42,066	73,618	83,499	68,013	319,565
1982	50,728	41,191	73,785	85,433	64,677	315,814
1983	48,958	39,033	76,178	89,554	60,177	313,900
1984	48,595	38,461	76,191	93,592	59,166	316,005
1985	51,150	38,940	75,880	96,789	61,867	324,626
1986	53,132	38,419	75,566	99,612	66,695	333,424
1987	55,727	39,275	76,543	102,442	68,789	342,776
1988	60,362	40,931	79,220	104,416	70,177	355,106
1989	60,804	41,653	79,086	107,630	71,665	360,838
1990	58,201	42,152	82,489	111,241	74,970	369,053
1991	51,979	39,763	82,475	113,598	74,089	361,904
1992	45,805	35,726	79,638	115,953	70,571	347,693
1993	42,575	31,997	73,821	114,099	63,147	325,639
1994	45,794	29,053	73,356	110,757	60,408	319,368
1995	50,779	30,886	72,904	109,454	61,581	325,604
1996	55,505	32,844	74,616	109,677	64,161	336,803
1997	59,104	31,759	76,423	108,768	67,725	343,779
1998	59,899	32,637	75,679	110,382	71,207	349,804
1999	63,324	34,134	77,191	109,943	74,355	358,947
2000	66,914	35,371	79,165	110,010	75,903	367,363

Note: Systemwide comparisons do not include enrollment in Summer Arts, International Programs, or CalStateTEACH. The CSU Statewide Nursing Program is included in Dominguez Hills beginning 1998-1999.

Table 33

**Enrollment, Full-Time Equivalent Students, and Units per Student  
for the Academic Year by Student Level, from 1970-1971,  
Systemwide**

Academic Year	Lower Division	Upper Division	Postbaccalaureate/ Graduate	Total
<b>Academic Year Enrollment</b>				
1970-71	55,791	132,454	54,229	242,474
1971-72	57,196	143,739	58,250	259,185
1972-73	62,875	149,769	60,821	273,465
1973-74	67,362	150,194	64,122	281,678
1974-75	71,855	149,729	67,488	289,072
1975-76	75,584	156,380	71,465	303,429
1976-77	75,434	152,841	70,329	298,604
1977-78	78,581	153,554	71,811	303,946
1978-79	79,444	150,819	66,612	296,875
1979-80	83,861	150,642	65,484	299,987
1980-81	86,009	155,093	66,354	307,456
1981-82	85,339	157,637	65,569	308,545
1982-83	81,940	162,916	63,047	307,903
1983-84	78,558	168,722	58,814	306,094
1984-85	78,313	172,399	58,478	309,190
1985-86	81,222	175,633	61,982	318,837
1986-87	83,071	178,681	66,568	328,320
1987-88	86,786	181,757	68,256	336,799
1988-89	91,148	187,084	69,835	348,067
1989-90	92,087	191,692	71,294	355,073
1990-91	89,438	198,003	74,780	362,221
1991-92	80,817	199,661	73,173	353,651
1992-93	70,198	195,234	68,212	333,643
1993-94	65,846	188,886	61,744	316,475
1994-95	68,179	184,800	59,989	312,968
1995-96	73,874	184,697	61,096	319,666
1996-97	79,926	186,299	64,298	330,523
1997-98	82,358	186,479	67,832	336,668
1998-99	84,277	188,622	71,490	344,389
1999-00	88,797	190,390	74,203	353,390
2000-01	92,979	193,377	75,927	362,283
<b>Full-Time Equivalent Students</b>				
1970-71	51,821	115,696	29,937	197,454
1971-72	51,800	121,278	31,146	204,224
1972-73	56,654	125,179	32,141	213,974
1973-74	60,345	123,836	33,894	218,285
1974-75	64,243	122,509	34,533	221,285
1975-76	66,606	126,760	36,276	229,642
1976-77	66,397	123,408	35,553	225,358
1977-78	68,494	122,943	36,242	227,679
1978-79	69,091	120,359	33,550	223,000
1979-80	73,049	120,646	33,095	226,790
1980-81	74,719	124,514	33,507	232,740
1981-82	73,851	126,486	33,551	233,888
1982-83	71,371	131,301	32,483	235,155
1983-84	68,854	136,348	30,590	235,792
1984-85	67,883	138,601	30,349	236,833
1985-86	69,919	140,404	31,929	242,252
1986-87	70,942	141,711	33,909	246,562
1987-88	73,940	143,332	34,660	251,932
1988-89	77,672	147,397	35,191	260,260
1989-90	78,186	151,087	35,764	265,037
1990-91	76,197	156,341	37,890	270,428
1991-92	68,230	157,410	37,419	263,059
1992-93	59,849	155,554	35,860	251,263
1993-94	56,205	151,515	33,243	240,963
1994-95	58,431	149,428	32,783	240,642
1995-96	63,606	149,985	33,817	247,408
1996-97	68,775	152,015	35,864	256,654
1997-98	70,959	153,010	38,047	262,016
1998-99	73,263	155,156	39,901	268,320
1999-00	77,286	156,462	41,635	275,383
2000-01	80,944	159,175	42,633	282,752

Note: These statistics do not include enrollment and FTE for Summer Arts, the CSU Statewide Nursing Program, International Programs, or CalStateTEACH. Beginning 1998-1999, figures for the CSU Statewide Nursing Program are included in Dominguez Hills.

Table 33 (continued)

**Enrollment, Full-Time Equivalent Students, and Units per Student  
for the Academic Year by Student Level, from 1970-1971,  
Systemwide**

Academic Year	Lower Division	Upper Division	Postbaccalaureate/ Graduate	Total
	<b>Units* Per Student</b>			
1970-71	27.87	26.20	16.56	24.43
1971-72	27.17	25.31	16.04	23.64
1972-73	27.03	25.07	15.85	23.47
1973-74	26.87	24.74	15.86	23.23
1974-75	26.83	24.55	15.35	22.96
1975-76	26.44	24.32	15.23	22.70
1976-77	26.41	24.22	15.17	22.64
1977-78	26.15	24.02	15.14	22.47
1978-79	26.09	23.94	15.11	22.53
1979-80	26.13	24.03	15.16	22.68
1980-81	26.06	24.09	15.15	22.71
1981-82	25.96	24.07	15.35	22.74
1982-83	26.13	24.18	15.46	22.91
1983-84	26.29	24.24	15.60	23.11
1984-85	26.00	24.12	15.57	22.98
1985-86	25.83	23.98	15.45	22.79
1986-87	25.62	23.79	15.28	22.53
1987-88	25.56	23.66	15.23	22.44
1988-89	25.56	23.64	15.12	22.43
1989-90	25.47	23.65	15.05	22.39
1990-91	25.56	23.69	15.20	22.40
1991-92	25.33	23.65	15.33	22.32
1992-93	25.58	23.90	15.77	22.59
1993-94	25.61	24.06	16.15	22.84
1994-95	25.71	24.26	16.39	23.07
1995-96	25.83	24.36	16.61	23.22
1996-97	25.81	24.48	16.73	23.30
1997-98	25.85	24.62	16.83	23.35
1998-99	26.08	24.68	16.74	23.37
1999-00	26.11	24.65	16.83	23.38
2000-01	26.12	24.69	16.84	23.41

\*All quarter units converted to semester units

Note: These statistics do not include enrollment and FTE for Summer Arts, the CSU Statewide Nursing Program, International Programs, or CalStateTEACH. Beginning 1998-1999, figures for the CSU Statewide Nursing Program included in Dominguez Hills.

**Table 34**  
**Full-Time Enrollment by Class Level, Fall 2000 Profile**  
**(By Campus)**

Campus	Freshman	Sophomore	Junior	Senior	Postbaccalaureate/	
					Graduate	Total
Bakersfield	933	589	967	1,311	770	4,570
Chico	3,134	1,853	3,652	3,921	1,299	13,859
Dominguez Hills	927	515	1,435	1,753	1,472	6,102
Fresno	3,051	1,819	3,387	4,058	1,805	14,120
Fullerton	4,306	1,991	5,103	5,037	2,032	18,469
Hayward	1,309	837	2,054	2,689	1,399	8,288
Humboldt	1,201	799	1,523	2,233	639	6,395
Long Beach	5,461	2,817	4,682	6,296	2,309	21,565
Los Angeles	2,321	1,336	2,115	3,762	1,909	11,443
Maritime Academy	144	127	100	179	15	565
Monterey Bay	678	275	497	655	125	2,230
Northridge	4,194	2,323	5,025	5,408	2,453	19,403
Pomona	4,152	1,861	2,594	4,382	670	13,659
Sacramento	3,377	1,472	4,752	5,571	2,551	17,723
San Bernardino	2,085	1,226	2,355	2,796	1,698	10,160
San Diego	4,957	2,871	5,137	6,292	2,880	22,137
San Francisco	3,278	1,844	4,421	5,140	3,228	17,911
San Jose	4,008	1,657	3,961	5,057	2,475	17,158
San Luis Obispo	4,185	2,504	3,002	5,118	601	15,410
San Marcos	697	401	1,035	1,233	619	3,985
Sonoma	1,523	804	1,343	1,519	647	5,836
Stanislaus	941	563	1,074	1,130	709	4,417
All Campuses	56,862	30,484	60,214	75,540	32,305	255,405
CalStateTEACH	—	—	—	—	588	588
Systemwide	56,862	30,484	60,214	75,540	32,893	255,993

**(Systemwide, from Fall 1973)**

Fall	Freshman	Sophomore	Junior	Senior	Postbaccalaureate/	
					Graduate	Total
1973	36,136	24,426	51,943	49,547	26,492	188,544
1974	37,084	28,008	49,339	47,690	25,401	187,522
1975	38,144	30,224	51,553	50,260	27,106	197,287
1976	38,893	28,925	50,514	48,917	25,833	193,082
1977	40,208	30,326	49,961	49,434	27,006	196,935
1978	41,181	30,129	47,825	48,617	24,793	192,545
1979	43,687	31,298	46,967	48,369	24,040	194,361
1980	44,719	32,394	49,274	50,134	24,493	201,014
1981	43,368	32,501	50,199	52,539	24,880	203,487
1982	42,787	32,114	51,121	54,872	25,033	205,927
1983	41,951	31,140	53,702	58,748	24,087	209,628
1984	41,129	30,489	53,420	60,790	23,804	209,632
1985	42,945	30,664	52,673	62,565	23,691	212,538
1986	44,018	29,864	51,964	64,504	25,115	215,465
1987	46,317	30,350	52,045	65,410	25,585	219,707
1988	49,804	31,578	54,480	66,061	25,686	227,609
1989	50,171	32,631	54,849	68,685	25,611	231,947
1990	48,471	33,315	57,769	70,381	27,147	237,083
1991	43,329	30,675	57,511	72,685	27,255	231,455
1992	38,531	28,190	56,650	75,714	26,989	226,074
1993	35,857	25,946	54,098	76,328	25,431	217,660
1994	38,675	23,861	54,344	74,439	25,086	216,405
1995	43,179	25,560	54,264	74,171	26,128	223,302
1996	47,331	27,445	55,803	74,898	27,317	232,794
1997	49,966	26,832	57,709	74,820	29,037	238,364
1998	50,616	27,922	57,422	76,167	29,714	241,841
1999	54,312	29,336	58,633	75,975	31,595	249,851
2000	56,862	30,484	60,214	75,540	32,305	255,405

Note: Systemwide comparisons do not include enrollment in Summer Arts, International Programs, or CalStateTEACH. The CSU Statewide Nursing Program is included in Dominguez Hills beginning 1998-1999.

**Table 35**  
**Average Student Units Enrolled**  
**by Term for the College Year, Quarter Schedule**

College Year	Summer	Fall	Winter	Spring
1965-66	9.6	13.6	13.7	13.4
1970-71	10.5	12.9	12.8	12.5
1975-76	9.5	11.9	11.7	11.7
1980-81	9.1	11.7	11.5	11.6
1985-86	9.0	11.8	11.5	11.6
1986-87	8.8	11.6	11.2	11.3
1987-88	8.6	11.5	11.5	11.3
1988-89	8.7	11.5	11.5	11.4
1989-90	8.8	11.4	11.4	11.3
1990-91	8.9	11.4	11.4	11.3
1991-92	8.7	11.4	11.4	11.3
1992-93	8.6	11.6	11.7	11.6
1993-94	8.6	11.8	11.8	11.7
1994-95	8.6	11.8	11.9	11.8
1995-96	8.8	11.9	12.0	11.9
1996-97	8.9	12.0	12.0	11.9
1997-98	9.0	12.0	12.0	11.9
1998-99	9.0	12.0	12.1	12.0
1999-00	9.2	12.1	12.0	11.9
2000-01	9.2	12.0	12.1	12.0

**Table 36**  
**Average Student Units Enrolled**  
**by Term for the College Year, Semester Schedule**

College Year	Summer	Fall	Winter*	Spring
1965-66	—	11.0	—	11.1
1970-71	—	11.9	—	12.2
1975-76	—	11.2	3.9	11.1
1980-81	—	11.2	3.9	11.2
1985-86	—	11.3	3.6	11.2
1986-87	—	11.2	3.7	11.1
1987-88	—	11.2	3.7	11.1
1988-89	—	11.1	3.7	11.1
1989-90	—	11.1	3.7	11.1
1990-91	—	11.1	3.6	11.1
1991-92	—	11.0	3.6	11.1
1992-93	—	11.1	3.4	11.2
1993-94	—	11.3	3.4	11.3
1994-95	—	11.4	3.4	11.4
1995-96	—	11.5	3.5	11.4
1996-97	—	11.5	3.5	11.5
1997-98	—	11.6	3.5	11.5
1998-99	—	11.6	3.5	11.5
1999-00**	8.1	11.6	3.6	11.5
2000-01	5.2	11.6	3.5	11.6

\* Units taken at Stanislaus during 4-week winter session.

\*\* No semester campus had a summer term prior to 1999-2000.

Note: These statistics do not include enrollment for Summer Arts, the CSU Statewide Nursing Program, International Programs, or CalStateTEACH. Beginning 1998-1999, figures for the CSU Statewide Nursing Program included in Dominguez Hills. Fall 2000 figures reflect final fall data used in college year reporting.

Table 37

**Average Number of Units for Which Students Enrolled  
by Student Level, from Fall 1965**

Fall	Freshman	Sophomore	Junior	Senior	Postbaccalaureate/ Graduate	Total
1965	13.8	13.5	12.6	12.0	6.4	11.4
1970	14.0	14.0	13.3	13.3	8.4	12.4
1975	13.4	13.0	12.2	12.0	7.6	11.4
1980	13.2	12.9	12.1	11.9	7.6	11.4
1985	13.0	12.8	12.0	11.9	7.7	11.4
1986	12.9	12.7	12.0	11.9	7.7	11.3
1987	12.9	12.6	11.9	11.8	7.6	11.2
1988	12.8	12.6	11.9	11.7	7.6	11.2
1989	12.7	12.6	11.9	11.7	7.8	11.2
1990	12.8	12.7	12.0	11.6	7.6	11.2
1991	12.7	12.5	11.9	11.6	7.6	11.1
1992	12.8	12.6	12.0	11.8	7.8	11.2
1993	12.8	12.7	12.2	11.9	8.0	11.4
1994	12.8	12.9	12.3	11.9	8.1	11.5
1995	12.9	12.9	12.3	12.0	8.3	11.6
1996	12.8	13.0	12.3	12.1	8.3	11.6
1997	12.8	13.1	12.4	12.1	8.4	11.6
1998	12.9	13.2	12.4	12.2	8.3	11.7
1999	13.0	13.2	12.4	12.2	8.4	11.7
2000	12.9	13.3	12.4	12.1	8.4	11.7

Table 38

**Average Number of Units for Which Undergraduate Students Enrolled  
by Enrollment Status, from Fall 1994**

Fall	Continuing Students*	Undergraduate Transfers	First-Time Freshmen
1994	12.2	11.9	13.6
1995	12.3	11.9	13.7
1996	12.3	12.0	13.6
1997	12.3	12.0	13.6
1998	12.4	12.1	13.8
1999	12.4	12.1	13.8
2000	12.4	12.1	13.8

\* "Continuing Students" includes continuing, returning, returning transfer, and transitory students (transitory students are those admitted under special procedures who have continuing status with another institution).

Note: These statistics do not include enrollment for Summer Arts, the CSU Statewide Nursing Program, International Programs, or CalStateTEACH. Beginning 1998-1999, figures for the CSU Statewide Nursing Program included in Dominguez Hills.

Table 39

**Full-Time and Part-Time Enrollment,  
Percent Distribution from Fall 1973**

Fall	Total	Number		Percent Distribution	
		Full-Time	Part-Time	Full-Time	Part-Time
1973	286,633	188,544	98,089	66	34
1974	291,542	187,522	104,020	64	36
1975	310,891	197,287	113,604	63	37
1976	303,734	193,082	110,652	64	36
1977	312,380	196,935	115,445	63	37
1978	306,175	192,545	113,630	63	37
1979	306,801	194,361	112,440	63	37
1980	313,850	201,014	112,836	64	36
1981	319,565	203,487	116,078	64	36
1982	315,814	205,927	109,887	65	35
1983	313,900	209,628	104,272	67	33
1984	316,005	209,632	106,373	66	34
1985	324,626	212,538	112,088	65	35
1986	333,424	215,465	117,959	65	35
1987	342,776	219,707	123,069	64	36
1988	355,106	227,609	127,497	64	36
1989	360,838	231,947	128,891	64	36
1990	369,053	237,083	131,970	64	36
1991	361,904	231,455	130,449	64	36
1992	347,693	226,074	121,619	65	35
1993	325,639	217,660	107,979	67	33
1994	319,368	216,405	102,963	68	32
1995	325,604	223,302	102,302	69	31
1996	336,803	232,794	104,009	69	31
1997	343,779	238,364	105,415	69	31
1998	349,804	241,841	107,963	69	31
1999	358,947	249,851	109,096	70	30
2000	367,363	255,405	111,958	70	30

Note: These statistics do not include enrollment for Summer Arts, the CSU Statewide Nursing Program, International Programs, or CalStateTEACH. Beginning 1998-1999, figures for the CSU Statewide Nursing Program included in Dominguez Hills.

Table 40

## Enrollment by Gender and Percent Female, from Fall 1960

Fall	Enrollment			Percent Women
	Total	Men	Women	
1960	95,081	56,741	38,340	40
1965	154,927	89,829	65,098	42
1970	241,559	140,650	100,909	42
1971	262,081	152,323	109,758	42
1972	276,737	159,734	117,003	42
1973	286,633	161,210	125,423	44
1974	291,542	159,748	131,794	45
1975	310,891	168,699	142,192	46
1976	303,734	159,359	144,375	48
1977	312,380	159,598	152,782	49
1978	306,175	152,568	153,607	50
1979	306,801	149,206	157,595	51
1980	313,850	150,697	163,153	52
1981	319,565	152,263	167,302	52
1982	315,814	150,593	165,221	52
1983	313,900	150,060	163,840	52
1984	316,005	150,857	165,148	52
1985	324,626	153,432	171,194	53
1986	333,424	156,105	177,319	53
1987	342,776	158,143	184,633	54
1988	355,106	162,622	192,484	54
1989	360,838	164,560	196,278	54
1990	369,053	167,505	201,548	55
1991	361,904	163,894	198,010	55
1992	347,693	157,368	190,325	55
1993	325,639	147,163	178,476	55
1994	319,368	143,425	175,943	55
1995	325,604	144,548	181,056	56
1996	336,803	147,443	189,360	56
1997	343,779	147,695	196,084	57
1998	349,804	147,769	202,035	58
1999	358,947	150,100	208,847	58
2000	367,363	152,224	215,139	59

Table 41

Average Number of Units Enrolled by Gender,  
All Students, from Fall 1965

Fall	Male	Female
1965	11.5	11.2
1970	12.5	12.2
1975	11.4	11.3
1980	11.5	11.2
1985	11.6	11.3
1986	11.5	11.2
1987	11.4	11.1
1988	11.4	11.1
1989	11.4	11.1
1990	11.3	11.1
1991	11.2	11.0
1992	11.4	11.1
1993	11.5	11.3
1994	11.6	11.4
1995	11.7	11.5
1996	11.7	11.6
1997	11.7	11.6
1998	11.7	11.6
1999	11.7	11.7
2000	11.7	11.7

Note: These statistics do not include enrollment for Summer Arts, the CSU Statewide Nursing Program, International Programs, or CalStateTEACH. Beginning 1998-1999, figures for the CSU Statewide Nursing Program included in Dominguez Hills.

**Table 42**  
**Mean Age of Full-Time and Part-Time Students by Gender,**  
**from Fall 1967**

Fall	Full-Time			Part-Time			Total		Mean Total
	Male	Female	Total	Male	Female	Total	Male	Female	
<b>Undergraduate Students</b>									
1967	21.9	21.3	21.6	27.9	27.4	27.7	23.0	22.9	22.9
1968	22.0	21.4	21.8	27.7	27.2	27.5	23.1	22.9	22.9
1969	22.2	21.7	22.0	27.5	27.3	27.4	23.2	23.1	23.1
1970	22.6	22.0	22.4	26.8	27.4	27.1	23.4	23.2	23.3
1971	22.9	22.0	22.6	26.6	27.0	26.8	23.8	23.3	23.5
1972	23.1	22.0	22.6	26.4	26.8	26.6	23.9	23.3	23.6
1973	23.1	22.0	22.7	26.5	27.1	26.7	24.1	23.4	23.8
1974	23.0	22.0	22.6	26.8	27.2	27.0	24.1	23.4	23.8
1975	23.3	22.1	22.8	27.0	27.4	27.2	24.4	23.6	24.1
1976	22.9	22.2	22.6	27.1	27.5	27.3	24.1	23.7	23.9
1977	22.8	22.3	22.6	26.9	27.8	27.3	24.0	23.9	23.9
1978	22.7	22.3	22.5	26.7	27.8	27.2	23.8	23.9	23.9
1979	22.5	22.4	22.4	26.5	27.9	27.2	23.6	24.0	23.8
1980	22.4	22.4	22.4	26.5	28.2	27.4	23.6	24.0	23.8
1981	22.5	22.5	22.5	26.5	28.3	27.4	23.6	24.2	23.9
1982	22.5	22.5	22.5	26.4	28.2	27.3	23.6	24.1	23.9
1983	22.6	22.6	22.6	26.4	28.3	27.3	23.6	24.1	23.9
1984	22.6	22.6	22.6	26.4	28.2	27.3	23.7	24.2	23.9
1985	22.7	22.7	22.7	26.5	28.3	27.4	23.7	24.3	24.0
1986	22.7	22.7	22.7	26.5	28.3	27.4	23.8	24.3	24.1
1987	22.7	22.8	22.7	26.6	28.4	27.5	23.8	24.4	24.1
1988	22.7	22.8	22.8	26.6	28.3	27.5	23.8	24.5	24.2
1989	22.7	22.9	22.8	26.7	28.4	27.6	23.8	24.5	24.2
1990	22.8	23.0	22.9	26.9	28.7	27.9	23.9	24.6	24.3
1991	22.9	23.1	23.0	26.9	28.6	27.8	24.0	24.7	24.4
1992	23.1	23.2	23.2	27.1	28.8	28.0	24.2	24.8	24.6
1993	23.3	23.4	23.3	27.3	28.9	28.2	24.4	24.9	24.6
1994	23.3	23.3	23.3	27.4	28.9	28.3	24.4	24.8	24.5
1995	23.4	23.3	23.3	27.5	28.9	28.3	24.4	24.7	24.6
1996	23.4	23.3	23.3	27.5	28.8	28.2	24.3	24.6	24.5
1997	23.3	23.2	23.3	27.4	28.6	28.1	24.3	24.5	24.4
1998	23.1	23.1	23.1	27.4	28.8	28.2	24.2	24.5	24.3
1999	22.9	23.0	23.0	27.2	28.7	28.0	23.9	24.3	24.1
2000	22.7	22.8	22.8	27.0	28.5	27.9	23.8	24.1	24.0
<b>Postbaccalaureate/Graduate Students</b>									
1967	26.4	26.7	26.6	31.3	33.4	32.9	30.1	31.7	31.3
1968	27.0	26.6	26.8	31.4	33.0	32.1	30.3	31.3	31.2
1969	26.9	26.5	26.8	31.1	32.6	31.8	30.0	30.8	30.4
1970	27.0	26.6	26.8	30.8	31.7	31.4	29.7	30.4	30.0
1971	27.2	26.7	26.9	30.5	31.4	31.0	29.6	30.2	29.9
1972	27.4	27.0	27.2	30.4	31.5	30.9	29.6	30.2	29.9
1973*	28.1	27.9	28.0	30.8	32.0	31.4	29.7	30.2	30.0
1974	28.2	28.2	28.2	30.9	31.9	31.4	29.8	30.5	30.1
1975	28.8	28.6	28.7	31.1	32.1	31.6	30.2	30.8	30.5
1976	28.6	28.7	28.6	31.0	32.2	31.7	30.1	30.9	30.5
1977	28.8	29.1	28.9	31.3	32.4	31.9	30.4	31.2	30.8
1978	29.0	29.2	29.1	31.4	32.7	32.1	30.6	31.4	31.0
1979	29.3	29.7	29.5	31.5	32.9	32.3	30.7	31.7	31.3
1980	29.5	30.1	29.9	31.8	33.2	32.6	31.0	32.0	31.6
1981	29.7	30.4	30.1	32.0	33.6	32.9	31.2	32.4	31.9
1982	30.1	30.7	30.4	32.1	33.9	33.1	31.3	32.6	32.1
1983	30.1	30.7	30.5	32.2	34.1	33.3	31.4	32.7	32.2
1984	30.3	30.9	30.7	32.4	34.2	33.4	31.6	32.8	32.3
1985	30.7	31.1	30.9	32.5	34.5	33.6	31.9	33.1	32.6
1986	30.9	31.5	31.2	32.9	34.6	33.9	32.2	33.4	32.9
1987	31.1	31.7	31.4	33.1	34.8	34.1	32.4	33.6	33.1
1988	31.3	31.6	31.5	33.5	35.3	34.5	32.7	33.9	33.4
1989	31.4	31.7	31.6	33.7	35.3	34.7	33.0	34.0	33.6
1990	31.6	31.8	31.7	33.9	35.4	34.8	33.1	34.0	33.7
1991	31.4	31.6	31.5	34.1	35.4	34.8	33.1	33.9	33.6
1992	31.3	31.4	31.4	34.0	35.4	34.8	33.0	33.8	33.5
1993	31.2	31.3	31.3	34.2	35.3	34.9	33.1	33.6	33.4
1994	31.2	31.0	31.1	34.4	35.4	35.1	33.2	33.5	33.4
1995	31.5	31.1	31.2	34.5	35.6	35.2	33.3	33.6	33.5
1996	31.6	31.2	31.4	34.8	35.6	35.3	33.5	33.7	33.6
1997	31.8	31.2	31.4	34.8	35.6	35.3	33.6	33.6	33.6
1998	31.8	31.2	31.4	35.1	35.7	35.4	33.8	33.7	33.7
1999	32.0	31.2	31.4	35.3	35.7	35.5	34.0	33.6	33.7
2000	32.0	32.2	31.4	35.7	35.7	35.7	34.2	33.6	33.8

\*Beginning with 1973-1974, full-time definition changed from 12 units to 9 units for Postbaccalaureate/Graduate Students.

Table 43

## Total Enrollment by Age Group and Gender, from Fall 1987

Age Group	1987	1988	1989	1990	1991	1992	1993	1994	1995	1996	1997	1998	1999	2000
<b>Men</b>														
17 & Under	703	837	973	1,032	927	989	1,049	1,155	1,209	1,232	1,555	1,643	1,564	1,933
18	10,339	10,974	10,828	9,737	8,690	7,411	7,097	7,824	8,627	9,582	9,859	10,493	11,462	11,990
19	11,442	12,345	13,061	12,460	11,074	9,508	8,644	8,849	9,539	10,495	11,097	11,534	12,588	13,277
20	12,086	12,569	13,127	13,632	12,550	10,844	9,551	9,200	9,359	9,930	10,643	10,982	11,605	12,216
21	14,632	15,298	15,574	16,360	16,256	14,964	13,000	12,052	11,962	12,052	12,124	12,717	13,120	13,862
22	17,052	16,619	17,093	17,774	18,182	18,270	16,574	14,944	14,102	14,240	13,912	13,690	14,441	14,765
23	15,748	15,491	14,816	15,360	15,962	16,446	16,279	14,959	14,065	13,541	13,384	12,810	12,839	13,119
24	12,546	12,684	12,142	12,173	12,164	12,629	12,851	12,991	12,258	11,805	10,935	10,818	10,493	10,550
25-29	32,797	33,821	34,231	34,869	34,276	33,474	31,690	31,838	33,269	33,823	33,343	32,082	31,077	29,575
30-34	15,553	15,655	15,532	15,763	15,399	15,039	14,070	13,616	13,624	13,691	13,386	13,313	13,092	13,083
35 & Over	15,245	16,329	17,183	18,345	18,414	17,794	16,358	15,997	16,518	17,044	17,448	17,687	17,819	17,854
All Ages	158,143	162,622	164,560	167,505	163,894	157,368	147,163	143,425	144,548	147,443	147,695	147,769	150,100	152,224
Range	12-89	12-84	13-88	11-89	11-90	01-91	04-92	01-98	10-94	06-95	07-96	11-90	10-88	11-95
Mean	25.3	25.3	25.4	25.5	25.7	25.8	25.8	25.8	25.9	25.9	25.9	25.8	25.7	25.6
Median	23	23	23	23	23	24	24	24	24	24	24	24	23	23
<b>Women</b>														
17 & Under	1,016	1,205	1,514	1,427	1,202	1,412	1,637	1,822	1,946	2,063	2,502	2,414	2,215	2,495
18	14,067	14,475	13,995	13,033	12,170	10,404	9,954	11,374	12,695	13,879	14,655	15,366	16,430	17,508
19	13,880	15,425	15,822	15,091	13,696	12,418	11,325	11,479	12,871	14,198	15,277	15,848	16,923	17,914
20	14,964	15,459	16,561	16,884	15,751	13,984	12,682	12,379	12,655	13,917	14,878	15,961	16,754	17,549
21	17,442	18,330	18,604	20,120	20,293	18,946	16,679	15,896	16,045	16,352	17,171	18,123	19,411	20,293
22	18,248	18,666	19,048	20,014	21,270	21,546	19,971	18,032	17,604	18,201	18,154	18,714	19,836	20,709
23	15,266	14,711	15,183	15,733	16,207	17,260	17,356	16,405	15,596	15,620	16,062	15,959	16,360	17,122
24	11,414	11,693	10,931	11,602	11,673	12,047	12,598	13,042	12,950	12,802	12,821	12,927	13,163	13,296
25-29	30,047	31,843	32,597	33,290	32,735	31,872	30,358	31,158	33,791	36,125	37,171	37,474	37,667	37,373
30-34	17,197	17,606	17,613	17,942	17,450	16,671	15,288	14,983	15,100	15,406	15,600	15,963	16,724	17,353
35 & Over	31,092	33,071	34,410	36,412	35,563	33,765	30,628	29,373	29,759	30,783	31,779	33,286	33,364	33,527
All Ages	184,633	192,484	196,278	201,548	198,010	190,325	178,476	175,943	181,056	189,360	196,084	202,035	208,847	215,139
Range	13-86	10-86	12-88	13-89	01-91	13-91	03-92	01-98	10-94	06-96	09-96	11-92	10-93	10-89
Mean	26.5	26.5	26.6	26.8	26.8	26.8	26.8	26.7	26.6	26.6	26.5	26.6	26.5	26.3
Median	23	23	23	23	23	23	23	24	24	24	23	23	23	23
<b>Total</b>														
17 & Under	1,719	2,042	2,487	2,459	2,129	2,401	2,686	2,977	3,155	3,295	4,057	4,057	3,779	4,428
18	24,406	25,449	24,823	22,770	20,860	17,815	17,051	19,198	21,322	23,461	24,514	25,859	27,892	29,498
19	25,322	27,770	28,883	27,551	24,770	21,926	19,969	20,328	22,410	24,693	26,374	27,382	29,511	31,191
20	27,050	28,028	29,688	30,516	28,301	24,828	22,233	21,579	22,014	23,847	25,521	26,943	28,359	29,765
21	32,074	33,628	34,178	36,480	36,549	33,910	29,679	27,948	28,007	28,404	29,295	30,840	32,531	34,155
22	35,300	35,285	36,141	37,788	39,452	39,816	36,545	32,976	31,706	32,441	32,066	32,404	34,277	35,474
23	31,014	30,202	29,999	31,093	32,169	33,706	33,635	31,364	29,661	29,161	29,446	28,769	29,199	30,241
24	23,960	24,377	23,073	23,775	23,837	24,676	25,449	26,033	25,208	24,607	23,756	23,745	23,656	23,846
25-29	62,844	65,664	66,828	68,159	67,011	65,346	62,048	62,996	67,060	69,948	70,514	69,556	68,744	66,948
30-34	32,750	33,261	33,145	33,705	32,849	31,710	29,358	28,599	28,724	29,097	28,986	29,276	29,816	30,436
35 & Over	46,337	49,400	51,593	54,757	53,977	51,559	46,986	45,370	46,277	47,827	49,227	50,973	51,183	51,381
All Ages	342,776	355,106	360,838	369,053	361,904	347,693	325,639	319,368	325,604	336,803	343,779	349,804	358,947	367,363
Range	12-89	10-86	12-88	11-89	01-91	01-91	03-92	01-98	10-94	06-96	07-96	11-92	10-93	10-95
Mean	25.9	26.0	26.0	26.2	26.3	26.4	26.3	26.3	26.3	26.2	26.2	26.3	26.1	26.0
Median	23	23	23	23	23	23	24	24	24	24	24	23	23	23

Note: These statistics do not include enrollment for Summer Arts, the CSU Statewide Nursing Program, International Programs, or CalStateTEACH. Beginning 1998-1999, figures for the CSU Statewide Nursing Program included in Dominguez Hills.

Table 44

CSU Fall Systemwide Enrollment by Ethnic Group, Number and Ratio to Total, from Fall 1985

	Undergraduate Enrollment											
	Lower Division		Upper Division		Total		Postbaccalaureate		Graduate		All Levels	
	N	R	N	R	N	R	N	R	N	R	N	R
<b>African American</b>												
1985	5,695	0.069	8,719	0.056	14,414	0.060	1,420	0.052	1,066	0.041	16,900	0.058
1986	5,622	0.067	8,547	0.054	14,169	0.058	1,457	0.048	1,155	0.042	16,781	0.056
1987	5,768	0.066	8,731	0.054	14,499	0.058	1,474	0.049	1,188	0.041	17,161	0.056
1988	6,119	0.066	8,946	0.054	15,065	0.058	1,439	0.048	1,235	0.041	17,739	0.056
1989	6,534	0.070	9,135	0.054	15,669	0.060	1,444	0.050	1,394	0.043	18,507	0.057
1990	6,898	0.076	9,767	0.056	16,665	0.063	1,593	0.052	1,390	0.042	19,648	0.060
1991	6,659	0.080	10,001	0.057	16,660	0.065	1,458	0.052	1,601	0.046	19,719	0.062
1992	6,252	0.085	10,330	0.060	16,582	0.067	1,289	0.052	1,776	0.052	19,647	0.064
1993	5,990	0.090	10,052	0.061	16,042	0.069	1,040	0.050	1,779	0.056	18,861	0.066
1994	5,938	0.089	10,526	0.066	16,464	0.073	987	0.053	1,856	0.059	19,307	0.070
1995	6,576	0.090	10,963	0.069	17,539	0.076	1,097	0.056	2,025	0.064	20,661	0.073
1996	7,191	0.092	11,259	0.071	18,450	0.078	1,276	0.060	2,098	0.066	21,824	0.075
1997	7,197	0.091	11,194	0.071	18,391	0.077	1,342	0.057	2,272	0.071	22,005	0.075
1998	6,906	0.086	10,757	0.068	17,663	0.074	1,459	0.057	2,402	0.074	21,524	0.073
1999	6,687	0.081	10,757	0.068	17,444	0.073	1,680	0.061	2,440	0.074	21,564	0.072
2000	6,592	0.076	10,538	0.067	17,130	0.070	1,789	0.065	2,584	0.078	21,503	0.070
<b>American Indian</b>												
1985	898	0.011	2,059	0.013	2,957	0.012	346	0.013	314	0.012	3,617	0.012
1986	817	0.010	1,930	0.012	2,747	0.011	354	0.012	277	0.010	3,378	0.011
1987	837	0.010	1,876	0.012	2,713	0.011	316	0.011	322	0.011	3,351	0.011
1988	825	0.009	1,827	0.011	2,652	0.010	302	0.010	326	0.011	3,280	0.010
1989	880	0.009	1,721	0.010	2,601	0.010	275	0.010	326	0.010	3,202	0.010
1990	915	0.010	1,801	0.010	2,716	0.010	283	0.009	313	0.009	3,312	0.010
1991	840	0.010	1,837	0.011	2,677	0.010	251	0.009	322	0.009	3,250	0.010
1992	750	0.010	1,969	0.011	2,719	0.011	238	0.010	306	0.009	3,263	0.011
1993	714	0.011	1,871	0.011	2,585	0.011	223	0.011	283	0.009	3,091	0.011
1994	739	0.011	1,886	0.012	2,625	0.012	167	0.009	290	0.009	3,082	0.011
1995	872	0.012	1,971	0.012	2,843	0.012	209	0.011	301	0.010	3,353	0.012
1996	906	0.012	2,062	0.013	2,968	0.013	234	0.011	318	0.010	3,520	0.012
1997	906	0.011	2,085	0.013	2,991	0.013	259	0.011	333	0.010	3,583	0.012
1998	822	0.010	2,057	0.013	2,879	0.012	279	0.011	343	0.011	3,501	0.012
1999	774	0.009	1,930	0.012	2,704	0.011	286	0.010	342	0.010	3,332	0.011
2000	744	0.009	1,787	0.011	2,531	0.010	279	0.010	332	0.010	3,142	0.010
<b>Asian American</b>												
1985	9,813	0.119	16,900	0.108	26,713	0.112	2,074	0.076	2,307	0.089	31,094	0.106
1986	10,564	0.126	18,077	0.114	28,641	0.118	2,235	0.074	2,489	0.091	33,365	0.111
1987	11,387	0.131	19,027	0.117	30,414	0.122	2,104	0.070	2,680	0.092	35,198	0.114
1988	12,494	0.135	19,914	0.120	32,408	0.126	2,034	0.068	2,735	0.090	37,177	0.117
1989	13,612	0.146	20,343	0.121	33,955	0.130	1,784	0.062	2,990	0.092	38,729	0.120
1990	14,213	0.156	21,737	0.125	35,950	0.136	2,090	0.068	3,044	0.092	41,084	0.125
1991	13,768	0.166	22,687	0.130	36,455	0.142	2,089	0.075	3,483	0.101	42,027	0.131
1992	12,825	0.175	23,391	0.135	36,216	0.147	1,987	0.080	3,724	0.109	41,927	0.137
1993	11,994	0.180	23,871	0.145	35,865	0.155	1,695	0.081	3,792	0.119	41,352	0.146
1994	11,836	0.178	25,003	0.156	36,839	0.162	1,468	0.079	4,072	0.129	42,379	0.153
1995	12,197	0.168	26,168	0.165	38,365	0.166	1,641	0.083	4,093	0.130	44,099	0.156
1996	12,448	0.160	26,645	0.168	39,093	0.165	1,800	0.084	4,090	0.129	44,983	0.155
1997	12,509	0.158	27,020	0.171	39,529	0.167	2,091	0.089	4,170	0.130	45,790	0.156
1998	12,644	0.158	26,715	0.170	39,359	0.166	2,464	0.096	4,247	0.131	46,070	0.156
1999	13,387	0.161	26,117	0.166	39,504	0.164	2,640	0.096	4,289	0.131	46,433	0.154
2000	14,195	0.163	25,620	0.163	39,815	0.163	2,677	0.097	4,176	0.126	46,668	0.153
<b>Filipino</b>												
1985	2,411	0.029	3,110	0.020	5,521	0.023	283	0.010	198	0.008	6,002	0.021
1986	2,693	0.032	3,502	0.022	6,195	0.026	307	0.010	211	0.008	6,713	0.022
1987	3,045	0.035	3,914	0.024	6,959	0.028	316	0.011	267	0.009	7,542	0.024
1988	3,620	0.039	4,401	0.027	8,021	0.031	332	0.011	268	0.009	8,621	0.027
1989	4,208	0.045	4,889	0.029	9,097	0.035	344	0.012	307	0.009	9,748	0.030
1990	4,790	0.053	5,436	0.031	10,226	0.039	410	0.013	338	0.010	10,974	0.033
1991	4,527	0.055	5,927	0.034	10,454	0.041	408	0.015	407	0.012	11,269	0.035
1992	3,941	0.054	6,556	0.038	10,497	0.043	375	0.015	472	0.014	11,344	0.037
1993	3,624	0.055	6,792	0.041	10,416	0.045	326	0.016	521	0.016	11,263	0.040
1994	3,674	0.055	7,201	0.045	10,875	0.048	333	0.018	555	0.018	11,763	0.042
1995	4,269	0.059	7,472	0.047	11,741	0.051	399	0.020	603	0.019	12,743	0.047
1996	4,838	0.062	7,704	0.049	12,542	0.053	445	0.021	668	0.021	13,655	0.047
1997	5,185	0.065	7,834	0.050	13,019	0.055	472	0.020	704	0.022	14,195	0.048
1998	5,399	0.067	8,061	0.051	13,460	0.057	575	0.022	769	0.024	14,804	0.050
1999	5,629	0.068	8,136	0.052	13,765	0.057	626	0.023	850	0.026	15,241	0.051
2000	5,842	0.067	8,293	0.053	14,135	0.058	675	0.024	858	0.026	15,668	0.051

Note: These statistics do not include enrollment for Summer Arts, the CSU Statewide Nursing Program, International Programs, or CalStateTEACH. Beginning 1998-1999, the CSU Statewide Nursing Program included in Dominguez Hills.

Table 44 (continued)

CSU Fall Systemwide Enrollment by Ethnic Group, Number and Ratio to Total, from Fall 1985

	Undergraduate Enrollment											
	Lower Division		Upper Division		Total		Postbaccalaureate		Graduate		All Levels	
	N	R	N	R	N	R	N	R	N	R	N	R
<b>Mexican American</b>												
1985	6,770	0.082	10,077	0.065	16,847	0.071	1,552	0.057	1,040	0.040	19,439	0.067
1986	6,872	0.082	10,606	0.067	17,478	0.072	1,596	0.053	1,152	0.042	20,226	0.067
1987	7,725	0.089	11,380	0.070	19,105	0.077	1,733	0.058	1,299	0.044	22,137	0.072
1988	8,766	0.095	12,367	0.075	21,133	0.082	1,826	0.061	1,410	0.046	24,369	0.077
1989	10,193	0.110	13,276	0.079	23,469	0.090	1,905	0.066	1,625	0.050	26,999	0.084
1990	11,594	0.127	15,030	0.087	26,624	0.101	2,432	0.080	1,623	0.049	30,679	0.093
1991	11,974	0.145	16,412	0.094	28,386	0.110	2,336	0.084	1,827	0.053	32,549	0.102
1992	11,730	0.160	17,717	0.102	29,447	0.120	2,423	0.098	1,973	0.058	33,843	0.111
1993	11,888	0.179	18,955	0.115	30,843	0.133	2,328	0.112	2,010	0.063	35,181	0.124
1994	12,714	0.192	20,373	0.127	33,087	0.146	2,385	0.128	2,350	0.074	37,822	0.136
1995	14,491	0.199	21,825	0.138	36,316	0.157	2,712	0.138	2,635	0.084	41,663	0.147
1996	15,483	0.199	23,331	0.147	38,814	0.164	3,240	0.151	2,922	0.092	44,976	0.155
1997	15,982	0.201	24,617	0.156	40,599	0.171	3,906	0.166	3,241	0.101	47,746	0.163
1998	16,037	0.200	25,757	0.163	41,794	0.176	4,516	0.176	3,503	0.108	49,813	0.168
1999	16,448	0.198	26,633	0.169	43,081	0.179	5,045	0.184	3,799	0.116	51,925	0.173
2000	16,672	0.192	27,820	0.177	44,492	0.182	5,195	0.188	4,230	0.127	53,917	0.177
<b>Other Latino</b>												
1985	2,495	0.030	4,868	0.031	7,363	0.031	704	0.026	624	0.024	8,691	0.030
1986	2,648	0.032	5,021	0.032	7,669	0.032	824	0.027	606	0.022	9,099	0.030
1987	2,939	0.034	5,265	0.032	8,204	0.033	777	0.026	719	0.025	9,700	0.031
1988	3,229	0.035	5,453	0.033	8,682	0.034	751	0.025	785	0.026	10,218	0.032
1989	3,164	0.034	5,516	0.033	8,680	0.033	734	0.026	855	0.026	10,269	0.032
1990	3,300	0.036	5,734	0.033	9,034	0.034	852	0.028	807	0.024	10,693	0.033
1991	3,622	0.044	6,063	0.035	9,685	0.038	849	0.031	913	0.026	11,447	0.036
1992	3,687	0.050	6,545	0.038	10,232	0.042	885	0.036	971	0.028	12,088	0.040
1993	3,789	0.057	6,973	0.042	10,762	0.046	798	0.038	1,102	0.035	12,662	0.045
1994	4,048	0.061	7,483	0.047	11,531	0.051	850	0.045	1,218	0.039	13,599	0.049
1995	4,852	0.067	8,219	0.052	13,071	0.057	950	0.048	1,314	0.042	15,335	0.054
1996	5,178	0.067	8,892	0.056	14,070	0.060	1,059	0.049	1,446	0.046	16,575	0.057
1997	5,275	0.066	9,281	0.059	14,556	0.061	1,248	0.053	1,529	0.048	17,333	0.059
1998	5,187	0.065	9,449	0.060	14,636	0.062	1,407	0.055	1,531	0.047	17,574	0.059
1999	5,405	0.065	9,666	0.061	15,071	0.063	1,510	0.055	1,567	0.048	18,148	0.060
2000	5,716	0.066	9,956	0.063	15,672	0.064	1,570	0.057	1,743	0.052	18,985	0.062
<b>Pacific Islander</b>												
1985	384	0.005	737	0.005	1,121	0.005	59	0.002	69	0.003	1,249	0.004
1986	350	0.004	748	0.005	1,098	0.005	86	0.003	82	0.003	1,266	0.004
1987	367	0.004	744	0.005	1,111	0.005	81	0.003	85	0.003	1,277	0.004
1988	426	0.005	731	0.004	1,157	0.005	82	0.003	83	0.003	1,322	0.004
1989	437	0.005	724	0.004	1,161	0.004	67	0.002	92	0.003	1,320	0.004
1990	427	0.005	744	0.004	1,171	0.004	60	0.002	79	0.002	1,310	0.004
1991	382	0.005	767	0.004	1,149	0.004	53	0.002	74	0.002	1,276	0.004
1992	371	0.005	814	0.005	1,185	0.005	48	0.002	97	0.003	1,330	0.004
1993	364	0.005	827	0.005	1,191	0.005	55	0.003	100	0.003	1,346	0.005
1994	348	0.005	824	0.005	1,172	0.005	43	0.002	109	0.003	1,324	0.005
1995	388	0.005	872	0.005	1,260	0.005	52	0.003	107	0.003	1,419	0.005
1996	420	0.005	921	0.006	1,341	0.006	64	0.003	107	0.003	1,512	0.005
1997	473	0.006	874	0.006	1,347	0.006	72	0.003	100	0.003	1,519	0.005
1998	487	0.006	869	0.006	1,356	0.006	90	0.004	108	0.003	1,554	0.005
1999	500	0.006	899	0.006	1,399	0.006	86	0.003	124	0.004	1,609	0.005
2000	533	0.006	919	0.006	1,452	0.006	92	0.003	117	0.004	1,661	0.005
<b>White</b>												
1985	54,347	0.656	109,479	0.702	163,826	0.686	20,958	0.765	20,391	0.784	205,175	0.702
1986	54,400	0.648	110,381	0.695	164,781	0.679	23,425	0.774	21,477	0.782	209,683	0.698
1987	55,077	0.632	111,484	0.686	166,561	0.667	23,353	0.775	22,665	0.776	212,579	0.688
1988	56,862	0.616	112,177	0.677	169,039	0.655	22,981	0.773	23,584	0.775	215,604	0.677
1989	54,096	0.581	112,192	0.669	166,288	0.637	22,282	0.773	24,993	0.767	213,563	0.663
1990	48,850	0.537	113,254	0.654	162,104	0.613	22,864	0.748	25,565	0.771	210,533	0.641
1991	40,955	0.495	110,899	0.635	151,854	0.590	20,361	0.732	25,978	0.751	198,193	0.620
1992	33,640	0.460	105,541	0.611	139,181	0.566	17,492	0.707	24,965	0.728	181,638	0.595
1993	28,094	0.423	95,725	0.580	123,819	0.535	14,409	0.690	22,172	0.698	160,400	0.564
1994	27,073	0.408	87,318	0.544	114,391	0.504	12,467	0.667	21,097	0.669	147,955	0.534
1995	29,024	0.399	81,165	0.512	110,189	0.476	12,596	0.641	20,425	0.648	143,210	0.507
1996	31,344	0.403	77,666	0.490	109,010	0.461	13,290	0.621	20,069	0.633	142,369	0.492
1997	31,797	0.401	75,088	0.475	106,885	0.450	14,209	0.602	19,721	0.615	140,815	0.481
1998	32,549	0.407	73,893	0.469	106,442	0.448	14,861	0.579	19,531	0.602	140,834	0.476
1999	34,238	0.412	73,164	0.465	107,402	0.447	15,582	0.568	19,367	0.591	142,351	0.474
2000	36,724	0.422	72,563	0.461	109,287	0.447	15,396	0.556	19,226	0.578	143,909	0.471

Note: These statistics do not include enrollment for Summer Arts, the CSU Statewide Nursing Program, International Programs, or CalStateTEACH. Beginning 1998-1999, the CSU Statewide Nursing Program included in Dominguez Hills.

Table 44 (continued)

CSU Fall Systemwide Enrollment by Ethnic Group, Number and Ratio to Total, from Fall 1985

	Undergraduate Enrollment											
	Lower Division		Upper Division		Total		Postbaccalaureate		Graduate		All Levels	
	N	R	N	R	N	R	N	R	N	R	N	R
<b>Total Identified</b>												
1985	82,813	0.919	155,949	0.903	238,762	0.909	27,396	0.879	26,009	0.847	292,167	0.900
1986	83,966	0.917	158,812	0.907	242,778	0.910	30,284	0.886	27,449	0.844	300,511	0.901
1987	87,145	0.917	162,421	0.907	249,566	0.911	30,154	0.883	29,225	0.843	308,945	0.901
1988	92,341	0.912	165,816	0.903	258,157	0.906	29,747	0.876	30,426	0.841	318,330	0.896
1989	93,124	0.909	167,796	0.899	260,920	0.902	28,835	0.876	32,582	0.841	322,337	0.893
1990	90,987	0.907	173,503	0.896	264,490	0.899	30,584	0.868	33,159	0.835	328,233	0.889
1991	82,727	0.902	174,593	0.890	257,320	0.894	27,805	0.864	34,605	0.826	319,730	0.883
1992	73,196	0.898	172,863	0.884	246,059	0.888	24,737	0.860	34,284	0.820	305,080	0.877
1993	66,457	0.891	165,066	0.878	231,523	0.882	20,874	0.859	31,759	0.818	284,156	0.873
1994	66,370	0.887	160,614	0.872	226,984	0.877	18,700	0.860	31,547	0.816	277,231	0.868
1995	72,669	0.890	158,655	0.870	231,324	0.876	19,656	0.861	31,503	0.813	282,483	0.868
1996	77,808	0.881	158,480	0.860	236,288	0.867	21,408	0.859	31,718	0.809	289,414	0.859
1997	79,324	0.873	157,993	0.853	237,317	0.860	23,599	0.862	32,070	0.795	292,986	0.852
1998	80,031	0.865	157,558	0.847	237,589	0.853	25,651	0.855	32,434	0.787	295,674	0.845
1999	83,068	0.852	157,302	0.841	240,370	0.845	27,455	0.850	32,778	0.780	300,603	0.837
2000	87,018	0.851	157,496	0.833	244,514	0.839	27,673	0.847	33,266	0.770	305,453	0.831
<b>Unknown</b>												
1985	5,053	0.056	12,723	0.074	17,776	0.068	3,185	0.102	2,796	0.091	23,757	0.073
1986	5,107	0.056	12,234	0.070	17,341	0.065	3,369	0.099	2,875	0.088	23,585	0.071
1987	5,182	0.055	12,172	0.068	17,354	0.063	3,410	0.100	3,049	0.088	23,813	0.070
1988	5,969	0.059	12,981	0.071	18,950	0.067	3,658	0.108	3,356	0.093	25,964	0.073
1989	6,387	0.062	13,626	0.073	20,013	0.069	3,520	0.107	3,604	0.093	27,137	0.075
1990	6,531	0.065	14,639	0.076	21,170	0.072	4,015	0.114	3,954	0.100	29,139	0.079
1991	6,307	0.069	15,861	0.081	22,168	0.077	3,733	0.116	4,481	0.107	30,382	0.084
1992	5,938	0.073	17,141	0.088	23,079	0.083	3,525	0.123	4,764	0.114	31,368	0.090
1993	5,895	0.079	17,545	0.093	23,440	0.089	3,055	0.126	4,764	0.123	31,259	0.096
1994	5,919	0.079	18,084	0.098	24,003	0.093	2,687	0.124	4,880	0.126	31,570	0.099
1995	6,939	0.085	18,693	0.103	25,632	0.097	2,780	0.122	4,922	0.127	33,334	0.102
1996	8,256	0.093	20,240	0.110	28,496	0.105	3,124	0.125	4,869	0.124	36,489	0.108
1997	9,284	0.102	21,273	0.115	30,557	0.111	3,286	0.120	4,914	0.122	38,757	0.113
1998	10,290	0.111	22,371	0.120	32,661	0.117	3,755	0.125	5,023	0.122	41,439	0.118
1999	11,921	0.122	23,262	0.124	35,183	0.124	4,084	0.126	5,155	0.123	44,422	0.124
2000	12,688	0.124	24,417	0.129	37,105	0.127	4,175	0.128	5,262	0.122	46,542	0.127
<b>Nonresident Alien</b>												
1985	2,224	0.025	3,997	0.023	6,221	0.024	569	0.018	1,912	0.062	8,702	0.027
1986	2,478	0.027	4,132	0.024	6,610	0.025	529	0.016	2,189	0.067	9,328	0.028
1987	2,675	0.028	4,392	0.025	7,067	0.026	573	0.017	2,378	0.069	10,018	0.029
1988	2,983	0.029	4,839	0.026	7,822	0.028	570	0.017	2,420	0.067	10,812	0.030
1989	2,946	0.029	5,294	0.028	8,240	0.029	573	0.017	2,551	0.066	11,364	0.032
1990	2,835	0.028	5,588	0.029	8,423	0.029	639	0.018	2,619	0.066	11,681	0.032
1991	2,708	0.030	5,619	0.029	8,327	0.029	643	0.020	2,822	0.067	11,792	0.033
1992	2,397	0.029	5,587	0.029	7,984	0.029	506	0.018	2,755	0.066	11,245	0.032
1993	2,220	0.030	5,309	0.028	7,529	0.029	382	0.016	2,313	0.060	10,224	0.031
1994	2,558	0.034	5,415	0.029	7,973	0.031	364	0.017	2,230	0.058	10,567	0.033
1995	2,057	0.025	5,010	0.027	7,067	0.027	401	0.018	2,319	0.060	9,787	0.030
1996	2,285	0.026	5,573	0.030	7,858	0.029	400	0.016	2,642	0.067	10,900	0.032
1997	2,255	0.025	5,925	0.032	8,180	0.030	506	0.018	3,350	0.083	12,036	0.035
1998	2,215	0.024	6,132	0.033	8,347	0.030	611	0.020	3,733	0.091	12,691	0.036
1999	2,469	0.025	6,570	0.035	9,039	0.032	780	0.024	4,103	0.098	13,922	0.039
2000	2,579	0.025	7,262	0.038	9,841	0.034	831	0.025	4,696	0.109	15,368	0.042
<b>Total, All Students</b>												
1985	90,090	1.000	172,669	1.000	262,759	1.000	31,150	1.000	30,717	1.000	324,626	1.000
1986	91,551	1.000	175,178	1.000	266,729	1.000	34,182	1.000	32,513	1.000	333,424	1.000
1987	95,002	1.000	178,985	1.000	273,987	1.000	34,137	1.000	34,652	1.000	342,776	1.000
1988	101,293	1.000	183,636	1.000	284,929	1.000	33,975	1.000	36,202	1.000	355,106	1.000
1989	102,457	1.000	186,716	1.000	289,173	1.000	32,928	1.000	38,737	1.000	360,838	1.000
1990	100,353	1.000	193,730	1.000	294,083	1.000	35,238	1.000	39,732	1.000	369,053	1.000
1991	91,742	1.000	196,073	1.000	287,815	1.000	32,181	1.000	41,908	1.000	361,904	1.000
1992	81,531	1.000	195,591	1.000	277,122	1.000	28,768	1.000	41,803	1.000	347,693	1.000
1993	74,572	1.000	187,920	1.000	262,492	1.000	24,311	1.000	38,836	1.000	325,639	1.000
1994	74,847	1.000	184,113	1.000	258,960	1.000	21,751	1.000	38,657	1.000	319,368	1.000
1995	81,665	1.000	182,358	1.000	264,023	1.000	22,837	1.000	38,744	1.000	325,604	1.000
1996	88,349	1.000	184,293	1.000	272,642	1.000	24,932	1.000	39,229	1.000	336,803	1.000
1997	90,863	1.000	185,191	1.000	276,054	1.000	27,391	1.000	40,334	1.000	343,779	1.000
1998	92,536	1.000	186,061	1.000	278,597	1.000	30,017	1.000	41,190	1.000	349,804	1.000
1999	97,458	1.000	187,134	1.000	284,592	1.000	32,319	1.000	42,036	1.000	358,947	1.000
2000	102,285	1.000	189,175	1.000	291,460	1.000	32,679	1.000	43,224	1.000	367,363	1.000

Note: These statistics do not include enrollment for Summer Arts, the CSU Statewide Nursing Program, International Programs, or CalStateTEACH. Beginning 1998-1999, the CSU Statewide Nursing Program included in Dominguez Hills.

Table 45

CSU Fall 2000 Enrollment\* by Campus with Percent by Ethnic Group, Number and Ratio to Total

Campus	African American	American Indian	Asian American	Filipino	Mexican American	Other Latino	Pacific Islander	White Non-Latino	Total Identified	Unknown	Non-resident Alien	Total All Groups
<b>Number</b>												
Bakersfield	398	110	200	133	1,498	260	21	3,148	5,768	527	102	6,397
Chico	289	231	524	92	1,032	405	50	10,720	13,343	2,061	508	15,912
Dominguez Hills	3,444	86	769	421	2,723	1,039	72	2,857	11,411	1,207	230	12,848
Fresno	926	215	1,784	272	4,539	579	45	7,557	15,917	2,347	792	19,056
Fullerton	772	164	5,263	1,062	4,676	1,533	107	10,503	24,080	3,036	1,265	28,381
Hayward	1,417	97	2,038	860	889	512	103	3,600	9,516	2,096	1,093	12,705
Humboldt	165	197	147	46	347	226	33	4,954	6,115	1,277	41	7,433
Long Beach	2,026	223	4,554	1,614	4,685	1,743	154	10,707	25,706	3,452	1,760	30,918
Los Angeles	1,513	86	3,114	556	6,661	2,307	31	2,795	17,063	1,565	965	19,593
Maritime Academy	17	8	31	15	21	18	5	365	480	143	30	653
Monterey Bay	103	29	87	51	552	119	13	1,165	2,119	474	31	2,624
Northridge	2,122	180	2,600	1,146	4,307	2,530	98	10,503	23,486	4,654	926	29,066
Pomona	589	98	4,800	1,198	3,048	1,036	60	4,858	15,687	1,720	1,017	18,424
Sacramento	1,595	291	3,226	995	2,413	778	161	12,148	21,607	3,405	702	25,714
San Bernardino	1,443	151	616	318	3,042	840	40	6,246	12,696	1,627	586	14,909
San Diego	1,353	249	2,084	1,927	5,112	1,232	170	14,491	26,618	3,859	1,132	31,609
San Francisco	1,530	158	5,319	2,249	1,605	1,619	162	8,199	20,841	4,050	1,935	26,826
San Jose	1,075	176	7,321	1,881	2,772	946	159	7,403	21,733	3,253	1,712	26,698
San Luis Obispo	168	179	1,268	385	1,275	528	77	10,045	13,925	2,722	230	16,877
San Marcos	180	64	258	254	878	242	31	3,433	5,340	792	124	6,256
Sonoma	158	69	221	105	465	232	39	4,747	6,036	1,246	120	7,402
Stanislaus	220	81	444	88	1,377	261	30	3,465	5,966	1,029	67	7,062
All Campuses	21,503	3,142	46,668	15,668	53,917	18,985	1,661	143,909	305,453	46,542	15,368	367,363
CalStateTEACH	35	6	27	9	76	18	1	309	481	106	1	588
Systemwide	21,538	3,148	46,695	15,677	53,993	19,003	1,662	144,218	305,934	46,648	15,369	367,951
<b>Percent</b>												
Bakersfield	6.9	1.9	3.5	2.3	26.0	4.5	0.4	54.6	90.2	8.2	1.6	100.0
Chico	2.2	1.7	3.9	0.7	7.7	3.0	0.4	80.3	83.9	13.0	3.2	100.0
Dominguez Hills	30.2	0.8	6.7	3.7	23.9	9.1	0.6	25.0	88.8	9.4	1.8	100.0
Fresno	5.8	1.4	11.2	1.7	28.5	3.6	0.3	47.5	83.5	12.3	4.2	100.0
Fullerton	3.2	0.7	21.9	4.4	19.4	6.4	0.4	43.6	84.8	10.7	4.5	100.0
Hayward	14.9	1.0	21.4	9.0	9.3	5.4	1.1	37.8	74.9	16.5	8.6	100.0
Humboldt	2.7	3.2	2.4	0.8	5.7	3.7	0.5	81.0	82.3	17.2	0.6	100.0
Long Beach	7.9	0.9	17.7	6.3	18.2	6.8	0.6	41.7	83.1	11.2	5.7	100.0
Los Angeles	8.9	0.5	18.3	3.3	39.0	13.5	0.2	16.4	87.1	8.0	4.9	100.0
Maritime Academy	3.5	1.7	6.5	3.1	4.4	3.8	1.0	76.0	73.5	21.9	4.6	100.0
Monterey Bay	4.9	1.4	4.1	2.4	26.1	5.6	0.6	55.0	80.8	18.1	1.2	100.0
Northridge	9.0	0.8	11.1	4.9	18.3	10.8	0.4	44.7	80.8	16.0	3.2	100.0
Pomona	3.8	0.6	30.6	7.6	19.4	6.6	0.4	31.0	85.1	9.3	5.5	100.0
Sacramento	7.4	1.3	14.9	4.6	11.2	3.6	0.7	56.2	84.0	13.2	2.7	100.0
San Bernardino	11.4	1.2	4.9	2.5	24.0	6.6	0.3	49.2	85.2	10.9	3.9	100.0
San Diego	5.1	0.9	7.8	7.2	19.2	4.6	0.6	54.4	84.2	12.2	3.6	100.0
San Francisco	7.3	0.8	25.5	10.8	7.7	7.8	0.8	39.3	77.7	15.1	7.2	100.0
San Jose	4.9	0.8	33.7	8.7	12.8	4.4	0.7	34.1	81.4	12.2	6.4	100.0
San Luis Obispo	1.2	1.3	9.1	2.8	9.2	3.8	0.6	72.1	82.5	16.1	1.4	100.0
San Marcos	3.4	1.2	4.8	4.8	16.4	4.5	0.6	64.3	85.4	12.7	2.0	100.0
Sonoma	2.6	1.1	3.7	1.7	7.7	3.8	0.6	78.6	81.5	16.8	1.6	100.0
Stanislaus	3.7	1.4	7.4	1.5	23.1	4.4	0.5	58.1	84.5	14.6	0.9	100.0
All Campuses	7.0	1.0	15.3	5.1	17.7	6.2	0.5	47.1	83.1	12.7	4.2	100.0
CalStateTEACH	7.3	1.2	5.6	1.9	15.8	3.7	0.2	64.2	81.8	18.0	0.2	100.0
Systemwide	7.0	1.0	15.3	5.1	17.6	6.2	0.5	47.2	83.1	12.7	4.2	100.0

\* Fall 2000 Profile, all levels, freshman through graduate.

**Table 46**  
**Fall 2000 CSU Enrollment by Ethnic Group and Student Level**  
**Number and Ratio\* to Total**  
**Systemwide**

Ethnic Group	Freshman	Sophomore	Junior	Senior	Postbaccalaureate	Graduate	Total
<b>Number</b>							
African American	4,391	2,201	4,424	6,114	1,789	2,584	21,503
American Indian	487	257	697	1,090	279	332	3,142
Asian American	9,708	4,487	9,544	16,076	2,677	4,176	46,668
Filipino	3,846	1,996	3,405	4,888	675	858	15,668
Mexican American	10,900	5,772	12,190	15,630	5,195	4,230	53,917
Other Latino	3,816	1,900	4,310	5,646	1,570	1,743	18,985
Pacific Islander	371	162	392	527	92	117	1,661
White, Non-Latino	23,693	13,031	30,640	41,923	15,396	19,226	143,909
Total Identified	57,212	29,806	65,602	91,894	27,673	33,266	305,453
Unknown	8,182	4,506	10,496	13,921	4,175	5,262	46,542
Nonresident Alien	1,520	1,059	3,067	4,195	831	4,696	15,368
All Groups	66,914	35,371	79,165	110,010	32,679	43,224	367,363
<b>Identified and Total Student Percentages</b>							
African American	7.7	7.4	6.7	6.7	6.5	7.8	7.0
American Indian	0.9	0.9	1.1	1.2	1.0	1.0	1.0
Asian American	17.0	15.1	14.5	17.5	9.7	12.6	15.3
Filipino	6.7	6.7	5.2	5.3	2.4	2.6	5.1
Mexican American	19.1	19.4	18.6	17.0	18.8	12.7	17.7
Other Latino	6.7	6.4	6.6	6.1	5.7	5.2	6.2
Pacific Islander	0.6	0.5	0.6	0.6	0.3	0.4	0.5
White, Non-Latino	41.4	43.7	46.7	45.6	55.6	57.8	47.1
Total Identified	85.5	84.3	82.9	83.5	84.7	77.0	83.1
<b>Summary of Percentages</b>							
Total Identified	85.5	84.3	82.9	83.5	84.7	77.0	83.1
Unknown	12.2	12.7	13.3	12.7	12.8	12.2	12.7
Nonresident Alien	2.3	3.0	3.9	3.8	2.5	10.9	4.2
All Groups	100.0	100.0	100.0	100.0	100.0	100.0	100.0

\*Ratio is to total identified students.

Note: Figures do not include enrollment in Summer Arts, International Programs, or CalStateTEACH.

Table 47

Residence\* of Total Enrollment at the Time of Application, from Fall 1975

Fall	California	Other States and U.S. Possessions	Foreign Countries	Total
1975	308,802	1,698	391	310,891
1976	300,149	1,761	1,824	303,734
1977	305,872	2,160	4,348	312,380
1978	297,150	2,284	6,741	306,175
1979	295,669	2,414	8,718	306,801
1980	301,571	2,363	9,916	313,850
1981	307,117	2,217	10,231	319,565
1982	304,454	1,914	9,446	315,814
1983	303,350	1,813	8,737	313,900
1984	305,856	1,982	8,167	316,005
1985	315,302	2,062	7,262	324,626
1986	323,251	1,912	8,261	333,424
1987	332,224	2,040	8,512	342,776
1988	344,256	2,000	8,850	355,106
1989	350,488	1,826	8,524	360,838
1990	358,479	1,618	8,956	369,053
1991	351,418	1,375	9,111	361,904
1992	337,862	1,286	8,545	347,693
1993	317,034	1,139	7,466	325,639
1994	310,632	1,354	7,382	319,368
1995	316,929	1,575	7,100	325,604
1996	328,499	1,827	6,477	336,803
1997	335,531	2,015	6,233	343,779
1998	341,314	2,264	6,226	349,804
1999	349,870	2,331	6,746	358,947
2000	356,802	2,691	7,870	367,363

\*Residence is determined by fee status.

Table 48

California Resident\* Enrollment by County, Fall 2000

County	Postbaccalaureate/		Total	County	Postbaccalaureate/		Total
	Undergraduate	Graduate			Undergraduate	Graduate	
Alameda	13,283	3,416	16,699	Placer	2,358	404	2,762
Alpine	21	2	23	Plumas	166	32	198
Amador	214	22	236	Riverside	7,503	2,056	9,559
Butte	3,726	1,104	4,830	Sacramento	12,694	3,278	15,972
Calaveras	238	44	282	San Benito	422	58	480
Colusa	188	12	200	San Bernardino	12,384	3,415	15,799
Contra Costa	7,411	1,177	8,588	San Diego	23,360	5,967	29,327
Del Norte	147	20	167	San Francisco	9,309	3,352	12,661
El Dorado	1,395	217	1,612	San Joaquin	4,119	735	4,854
Fresno	10,824	2,606	13,430	San Luis Obispo	3,335	722	4,057
Glenn	318	57	375	San Mateo	6,173	1,134	7,307
Humboldt	2,534	765	3,299	Santa Barbara	1,950	406	2,356
Imperial	1,055	397	1,452	Santa Clara	16,915	4,029	20,944
Inyo	86	9	95	Santa Cruz	1,795	600	2,395
Kern	5,528	1,443	6,971	Shasta	1,074	138	1,212
Kings	795	135	930	Sierra	53	4	57
Lake	284	30	314	Siskiyou	296	37	333
Lassen	168	42	210	Solano	3,186	351	3,537
Los Angeles	74,778	21,487	96,265	Sonoma	3,987	1,013	5,000
Madera	996	186	1,182	Stanislaus	4,050	987	5,037
Marin	1,607	404	2,011	Sutter	710	155	865
Mariposa	77	21	98	Tehama	433	84	517
Mendocino	579	113	692	Trinity	108	16	124
Merced	1,864	381	2,245	Tulare	2,698	470	3,168
Modoc	46	15	61	Tuolumne	358	72	430
Mono	49	5	54	Ventura	4,865	1,119	5,984
Monterey	2,813	471	3,284	Yolo	1,293	561	1,854
Napa	895	136	1,031	Yuba	386	61	447
Nevada	783	122	905				
Orange	25,919	6,106	32,025	California Total	284,601	72,201	356,802

\*Residence is determined by fee status.

Table 49

Out-of-State Enrollment by State of Residence, Fall 2000\*

State	Postbaccalaureate/			State	Postbaccalaureate/		
	Undergraduate	Graduate	Total		Undergraduate	Graduate	Total
Alabama	13	4	17	Nebraska	13	7	20
Alaska	71	3	74	Nevada	97	16	113
Arizona	105	29	134	New Hampshire	20	4	24
Arkansas	7	2	9	New Jersey	43	13	56
Colorado	80	20	100	New Mexico	37	13	50
Connecticut	23	5	28	New York	73	45	118
Delaware	5	0	5	North Carolina	12	16	28
District of Columbia	3	3	6	North Dakota	4	1	5
Florida	34	23	57	Ohio	33	16	49
Georgia	27	6	33	Oklahoma	16	1	17
Hawaii	108	23	131	Oregon	174	42	216
Idaho	55	5	60	Pennsylvania	46	22	68
Illinois	75	35	110	Rhode Island	14	2	16
Indiana	26	6	32	South Carolina	8	6	14
Iowa	10	5	15	South Dakota	6	1	7
Kansas	14	8	22	Tennessee	10	10	20
Kentucky	6	5	11	Texas	105	33	138
Louisiana	16	6	22	Utah	44	17	61
Maine	20	3	23	Vermont	6	3	9
Maryland	53	12	65	Virginia	25	17	42
Massachusetts	63	28	91	Washington	248	46	294
Michigan	34	27	61	West Virginia	1	0	1
Minnesota	41	8	49	Wisconsin	30	13	43
Mississippi	1	0	1	Wyoming	9	2	11
Missouri	37	10	47				
Montana	26	11	37	Other States Total	2,027	633	2,660

\*Residence is determined by fee status.

Table 50

Out-of-State Enrollment by United States Possession, Fall 2000\*

U.S. Possession	Undergraduate	Postbaccalaureate/ Graduate	Total
American Samoa	2	0	2
Guam	16	1	17
Northern Mariana Islands	0	1	1
Panama Canal Zone (obsolete)	1	0	1
Puerto Rico	6	3	9
Trust Territory of the Pacific Islands (obsolete)	1	0	1
Total U.S. Possessions	26	5	31

\*Residence is determined by fee status.

**Table 51**  
**Out-of-State Enrollment by Foreign Country of Residence, Fall 2000\***

Foreign Country	Postbaccalaureate/			Foreign Country	Postbaccalaureate/		
	Undergraduate	Graduate	Total		Undergraduate	Graduate	Total
Algeria	2	0	2	Luxembourg	1	0	1
Angola	3	0	3	Macao	7	0	7
Argentina	12	2	14	Macedonia (Yugoslavia)	2	0	2
Armenia	0	3	3	Malaysia	112	28	140
Australia	25	7	32	Mali	2	0	2
Austria	7	3	10	Malta	1	0	1
Azerbaijan	1	0	1	Marshall Islands	2	0	2
Bahamas	13	2	15	Mauritania	2	0	2
Bahrain	7	0	7	Mauritius	3	1	4
Bangladesh	27	14	41	Mexico	48	13	61
Barbados	1	0	1	Moldova	2	0	2
Belgium	6	0	6	Monaco	1	1	2
Belize (British Honduras)	2	1	3	Mongolia	1	0	1
Benin (Dahomey)	0	1	1	Morocco	17	1	18
Bolivia	3	0	3	Mozambique	0	1	1
Bosnia and Herzegovina	1	0	1	Myanmar (Burma)	13	5	18
Botswana	1	0	1	Namibia	2	1	3
Brazil	34	24	58	Nepal	12	8	20
Bulgaria	10	4	14	Netherlands	8	3	11
Cambodia	3	2	5	New Zealand	8	5	13
Canada	115	60	175	Nigeria	31	4	35
Chad	0	1	1	Norway	51	5	56
Chile	3	1	4	Oman	13	1	14
Colombia	5	10	15	Pakistan	41	58	99
Congo	1	0	1	Palau	1	0	1
Cook Islands	0	1	1	Panama	5	4	9
Costa Rica	3	3	6	Paraguay	2	1	3
Croatia	1	2	3	Peoples Dem. Rep. of Yemen**	1	0	1
Cyprus	52	10	62	Peoples Rep. of China	141	370	511
Czech Republic	5	3	8	Peru	13	7	20
Dem. & Fed. Rep. of Germany	125	33	158	Philippines	26	21	47
Denmark	18	4	22	Poland	8	5	13
Dominica (Leeward Islands)	1	1	2	Portugal (Azores)	9	0	9
Dominican Republic	5	0	5	Qatar	20	0	20
Ecuador	6	2	8	Romania	6	2	8
Egypt	13	6	19	Russian Federation	6	15	21
El Salvador	2	3	5	Rwanda	0	1	1
Estonia	2	1	3	Saudi Arabia	79	18	97
Ethiopia	3	5	8	Senegal	5	0	5
Fiji	5	3	8	Serbia	0	2	2
Finland	9	2	11	Singapore	53	13	66
France	53	21	74	Slovakia	1	0	1
French Antilles (Guadeloupe)	1	0	1	South Africa	7	3	10
French Polynesia	1	0	1	Spain	16	12	28
Gambia	2	0	2	Sri Lanka (Ceylon)	31	8	39
Georgia	0	2	2	Sudan	0	1	1
Ghana	5	0	5	Suriname	1	0	1
Greece	11	8	19	Sweden	155	23	178
Guatemala	4	0	4	Switzerland	34	6	40
Guinea	1	0	1	Syria	3	4	7
Haiti	0	1	1	Taiwan	525	403	928
Honduras	3	1	4	Tajikistan	0	2	2
Hong Kong	240	58	298	Tanzania	9	3	12
Hungary	5	3	8	Thailand	64	177	241
Iceland	11	8	19	Togo	1	0	1
India	149	402	551	Tonga	2	0	2
Indonesia (West Irian)	176	84	260	Trinidad and Tobago	6	1	7
Iran	10	18	28	Tunisia	2	1	3
Iraq	1	0	1	Turkey	27	113	140
Ireland	10	3	13	Uganda	1	1	2
Israel	23	7	30	Ukraine	2	7	9
Italy	14	15	29	United Arab Emirates	50	4	54
Ivory Coast (Côte d'Ivoire)	2	1	3	United Kingdom	57	21	78
Jamaica	4	2	6	United States	1	0	1
Japan	1,059	362	1,421	Uruguay	1	0	1
Jordan	10	10	20	USSR (formerly)	24	18	42
Kazakhstan	0	2	2	Uzbekistan	3	0	3
Kenya	32	21	53	Venezuela	13	5	18
Korea, North	3	11	14	Vietnam	34	15	49
Korea, South	242	206	448	Western Samoa	2	0	2
Kuwait	102	6	108	Yemen Arab Rep.**	4	0	4
Latvia	0	1	1	Yugoslavia	15	3	18
Lebanon	15	9	24	Zambia	3	0	3
Lithuania	1	2	3	Zimbabwe (Rhodesia)	10	1	11
				Unknown	225	160	385
				Total Foreign and Unknown	4,806	3,064	7,870

\*Residence is determined by fee status.

\*\*Unified as Republic of Yemen, May 1990.

**Table 52**  
**Total CSU Enrollment by Citizenship Status, from Fall 1980\***

Fall	Gender	Noncitizens			Total Noncitizens	U.S. Citizens	Total Enrollment
		Visa Students and Other Nonresident Aliens	Resident Aliens	Refugees			
1980	Men	7,163	7,977	468	15,608	135,089	150,697
	Women	3,104	6,599	216	9,919	153,234	163,153
	Total	10,267	14,576	684	25,527	288,323	313,850
1981	Men	7,258	9,193	619	17,070	135,193	152,263
	Women	3,329	7,781	251	11,361	155,941	167,302
	Total	10,587	16,974	870	28,431	291,134	319,565
1982	Men	6,468	10,823	788	18,079	132,514	150,593
	Women	3,270	9,092	337	12,699	152,522	165,221
	Total	9,738	19,915	1,125	30,778	285,036	315,814
1983	Men	5,973	12,707	807	19,487	130,573	150,060
	Women	3,097	10,372	359	13,828	150,012	163,840
	Total	9,070	23,079	1,166	33,315	280,585	313,900
1984	Men	5,583	14,252	913	20,748	130,109	150,857
	Women	3,062	11,547	455	15,064	150,084	165,148
	Total	8,645	25,799	1,368	35,812	280,193	316,005
1985	Men	5,481	15,183	1,032	21,696	131,736	153,432
	Women	3,221	12,504	583	16,308	154,886	171,194
	Total	8,702	27,687	1,615	38,004	286,622	324,626
1986	Men	5,739	16,017	1,050	22,806	133,299	156,105
	Women	3,589	13,319	607	17,515	159,804	177,319
	Total	9,328	29,336	1,657	40,321	293,103	333,424
1987	Men	5,951	16,266	1,001	23,218	134,925	158,143
	Women	4,067	14,276	616	18,959	165,674	184,633
	Total	10,018	30,542	1,617	42,177	300,599	342,776
1988	Men	6,295	16,954	985	24,234	138,388	162,622
	Women	4,517	15,357	626	20,500	171,984	192,484
	Total	10,812	32,311	1,611	44,734	310,372	355,106
1989	Men	6,437	17,636	964	25,037	139,523	164,560
	Women	4,927	16,451	644	22,022	174,256	196,278
	Total	11,364	34,087	1,608	47,059	313,779	360,838
1990	Men	6,580	18,676	968	26,224	141,281	167,505
	Women	5,101	17,880	691	23,672	177,876	201,548
	Total	11,681	36,556	1,659	49,896	319,157	369,053
1991	Men	6,522	19,156	977	26,655	137,239	163,894
	Women	5,270	18,897	708	24,875	173,135	198,010
	Total	11,792	38,053	1,685	51,530	310,374	361,904
1992	Men	6,030	19,233	917	26,180	131,188	157,368
	Women	5,215	19,489	712	25,416	164,909	190,325
	Total	11,245	38,722	1,629	51,596	296,097	347,693
1993	Men	5,386	19,217	865	25,468	121,695	147,163
	Women	4,838	20,200	674	25,712	152,764	178,476
	Total	10,224	39,417	1,539	51,180	274,459	325,639
1994	Men	5,327	19,735	860	25,922	117,503	143,425
	Women	5,240	21,518	677	27,435	148,508	175,943
	Total	10,567	41,253	1,537	53,357	266,011	319,368
1995	Men	4,889	20,228	943	26,060	118,488	144,548
	Women	4,898	22,997	767	28,662	152,394	181,056
	Total	9,787	43,225	1,710	54,722	270,882	325,604
1996	Men	5,324	20,137	1,014	26,475	120,968	147,443
	Women	5,576	23,590	860	30,026	159,334	189,360
	Total	10,900	43,727	1,874	56,501	280,302	336,803
1997	Men	5,829	19,318	986	26,133	121,562	147,695
	Women	6,207	23,275	915	30,397	165,687	196,084
	Total	12,036	42,593	1,901	56,530	287,249	343,779
1998	Men	6,081	18,290	965	25,336	122,433	147,769
	Women	6,610	22,632	946	30,188	171,847	202,035
	Total	12,691	40,922	1,911	55,524	294,280	349,804
1999	Men	6,723	17,443	937	25,103	124,997	150,100
	Women	7,199	22,235	900	30,334	178,513	208,847
	Total	13,922	39,678	1,837	55,437	303,510	358,947
2000	Men	7,389	16,236	829	24,454	127,770	152,224
	Women	7,979	21,167	861	30,007	185,132	215,139
	Total	15,368	37,403	1,690	54,461	312,902	367,363

\*Citizenship alone does not determine fee status. Dominguez Hills includes the CSU Statewide Nursing Program as of 1998-1999.

Table 53

**Noncitizen\* Student Enrollment from Top Fifteen Source Countries,  
Number and Percent of Total Noncitizens, Systemwide from Fall 1990**

Country		1990	1991	1992	1993	1994	1995	1996	1997	1998	1999	2000
Mexico	Number	5,772	6,419	7,054	7,590	8,481	8,100	8,761	8,852	8,353	8,111	7,834
	Percent	11.6	12.5	13.7	14.8	15.9	14.8	15.5	15.7	15.0	14.6	14.4
Vietnam	Number	7,777	7,864	8,092	7,946	8,496	8,603	9,222	9,104	8,616	7,846	6,703
	Percent	15.6	15.3	15.7	15.5	15.9	15.7	16.3	16.1	15.5	14.2	12.3
Taiwan	Number	3,822	3,982	3,860	3,561	3,482	3,307	3,408	3,406	3,296	3,423	3,401
	Percent	7.7	7.7	7.5	7.0	6.5	6.0	6.0	6.0	5.9	6.2	6.2
People's Rep. of China	Number	1,734	1,956	1,978	1,993	2,100	2,267	2,351	2,526	2,783	2,982	3,166
	Percent	3.5	3.8	3.8	3.9	3.9	4.1	4.2	4.5	5.0	5.4	5.8
Philippines	Number	2,630	2,676	2,619	2,570	2,707	2,733	3,007	3,031	3,076	3,169	3,100
	Percent	5.3	5.2	5.1	5.0	5.1	5.0	5.3	5.4	5.5	5.7	5.7
Japan	Number	1,156	1,227	1,306	1,267	1,421	1,587	1,855	2,076	2,287	2,400	2,592
	Percent	2.3	2.4	2.5	2.5	2.7	2.9	3.3	3.7	4.1	4.3	4.8
India	Number	1,531	1,573	1,557	1,536	1,557	1,572	1,670	1,776	1,901	2,080	2,469
	Percent	3.1	3.1	3.0	3.0	2.9	2.9	3.0	3.1	3.4	3.8	4.5
Korea, South	Number	2,574	2,601	2,559	2,505	2,521	2,508	2,468	2,334	2,181	2,187	2,031
	Percent	5.2	5.0	5.0	4.9	4.7	4.6	4.4	4.1	3.9	3.9	3.7
Hong Kong	Number	2,379	2,367	2,333	2,153	2,058	1,996	2,029	1,929	1,855	1,781	1,669
	Percent	4.8	4.6	4.5	4.2	3.9	3.6	3.6	3.4	3.3	3.2	3.1
El Salvador	Number	904	1,056	1,110	1,234	1,435	1,498	1,653	1,683	1,695	1,636	1,484
	Percent	1.8	2.0	2.2	2.4	2.7	2.7	2.9	3.0	3.1	3.0	2.7
Iran	Number	2,980	2,766	2,566	2,375	2,198	2,010	1,978	1,768	1,574	1,449	1,345
	Percent	6.0	5.4	5.0	4.6	4.1	3.7	3.5	3.1	2.8	2.6	2.5
Thailand	Number	483	533	552	507	586	691	838	1,129	1,229	1,301	1,325
	Percent	1.0	1.0	1.1	1.0	1.1	1.3	1.5	2.0	2.2	2.3	2.4
Indonesia (West Irian)	Number	1,075	1,040	1,028	1,010	1,044	955	1,004	970	918	1,005	1,026
	Percent	2.2	2.0	2.0	2.0	2.0	1.7	1.8	1.7	1.7	1.8	1.9
Canada	Number	1,191	1,130	1,056	954	895	841	915	945	941	913	939
	Percent	2.4	2.2	2.0	1.9	1.7	1.5	1.6	1.7	1.7	1.6	1.7
USSR	Number	284	334	473	619	785	787	892	966	988	1,003	939
	Percent	0.6	0.6	0.9	1.2	1.5	1.4	1.6	1.7	1.8	1.8	1.7
Subtotal	Number	36,292	37,524	38,143	37,820	39,766	39,455	42,051	42,495	41,693	41,286	40,023
	Percent	72.7	72.8	73.9	73.9	74.5	72.1	74.4	75.2	75.1	74.5	73.5
Other	Number	13,604	14,006	13,453	13,360	13,591	15,267	14,450	14,035	13,831	14,151	14,438
	Percent	27.3	27.2	26.1	26.1	25.5	27.9	25.6	24.8	24.9	25.5	26.5
All Countries	Number	49,896	51,530	51,596	51,180	53,357	54,722	56,501	56,530	55,524	55,437	54,461
	Percent	100.0	100.0	100.0	100.0	100.0	100.0	100.0	100.0	100.0	100.0	100.0

\*Citizenship alone does not determine fee status.

Note: Enrollment figures do not include Summer Arts, International Programs, or CalStateTeach.

**Table 54**  
**Total CSU Enrollment by Citizenship Status<sup>1</sup> and Campus, Fall 2000**

Campus	Gender	Noncitizens				Total Noncitizens	U.S. Citizens	Total Enrollment
		Visa Students and Other Nonresident Aliens	Resident Aliens	Refugees				
Bakersfield	M	53	141	5	199	1,995	2,194	
	W	49	256	7	312	3,891	4,203	
	T	102	397	12	511	5,886	6,397	
Chico	M	315	205	15	535	6,818	7,353	
	W	193	207	10	410	8,149	8,559	
	T	508	412	25	945	14,967	15,912	
Dominguez Hills <sup>2</sup>	M	110	434	16	560	3,258	3,818	
	W	120	804	25	949	8,081	9,030	
	T	230	1,238	41	1,509	11,339	12,848	
Fresno	M	419	644	3	1,066	6,934	8,000	
	W	373	762	5	1,140	9,916	11,056	
	T	792	1,406	8	2,206	16,850	19,056	
Fullerton	M	605	1,362	53	2,020	9,350	11,370	
	W	660	1,982	73	2,715	14,296	17,011	
	T	1,265	3,344	126	4,735	23,646	28,381	
Hayward	M	389	557	32	978	3,593	4,571	
	W	704	991	48	1,743	6,391	8,134	
	T	1,093	1,548	80	2,721	9,984	12,705	
Humboldt	M	13	53	2	68	3,292	3,360	
	W	28	56	0	84	3,989	4,073	
	T	41	109	2	152	7,281	7,433	
Long Beach	M	934	1,261	80	2,275	10,279	12,554	
	W	826	1,632	49	2,507	15,857	18,364	
	T	1,760	2,893	129	4,782	26,136	30,918	
Los Angeles	M	406	1,426	89	1,921	5,543	7,464	
	W	559	2,114	100	2,773	9,356	12,129	
	T	965	3,540	189	4,694	14,899	19,593	
Maritime Academy	M	29	21	0	50	473	523	
	W	1	1	0	2	128	130	
	T	30	22	0	52	601	653	
Monterey Bay	M	17	63	2	82	972	1,054	
	W	14	93	2	109	1,461	1,570	
	T	31	156	4	191	2,433	2,624	
Northridge	M	450	1,738	118	2,306	9,089	11,395	
	W	476	2,577	138	3,191	14,480	17,671	
	T	926	4,315	256	5,497	23,569	29,066	
Pomona	M	559	1,927	65	2,551	7,517	10,068	
	W	458	1,233	31	1,722	6,634	8,356	
	T	1,017	3,160	96	4,273	14,151	18,424	
Sacramento	M	386	887	28	1,301	9,290	10,591	
	W	316	1,107	34	1,457	13,666	15,123	
	T	702	1,994	62	2,758	22,956	25,714	
San Bernardino	M	361	340	10	711	4,667	5,378	
	W	225	586	21	832	8,699	9,531	
	T	586	926	31	1,543	13,366	14,909	
San Diego	M	522	864	47	1,433	11,887	13,320	
	W	610	1,260	46	1,916	16,373	18,289	
	T	1,132	2,124	93	3,349	28,260	31,609	
San Francisco	M	791	1,217	72	2,080	8,395	10,475	
	W	1,144	2,093	104	3,341	13,010	16,351	
	T	1,935	3,310	176	5,421	21,405	26,826	
San Jose	M	753	2,273	159	3,185	9,117	12,302	
	W	959	2,463	150	3,572	10,824	14,396	
	T	1,712	4,736	309	6,757	19,941	26,698	
San Luis Obispo	M	132	435	15	582	8,703	9,285	
	W	98	261	2	361	7,231	7,592	
	T	230	696	17	943	15,934	16,877	
San Marcos	M	51	116	5	172	2,083	2,255	
	W	73	239	4	316	3,685	4,001	
	T	124	355	9	488	5,768	6,256	
Sonoma	M	55	82	4	141	2,366	2,507	
	W	65	139	5	209	4,686	4,895	
	T	120	221	9	350	7,052	7,402	
Stanislaus	M	39	190	9	238	2,149	2,387	
	W	28	311	7	346	4,329	4,675	
	T	67	501	16	584	6,478	7,062	
All Campuses	M	7,389	16,236	829	24,454	127,770	152,224	
	W	7,979	21,167	861	30,007	185,132	215,139	
	T	15,368	37,403	1,690	54,461	312,902	367,363	

<sup>1</sup>Citizenship alone does not determine fee status.

<sup>2</sup>Dominguez Hills includes students enrolled in the CSU Statewide Nursing Program.