



In Brief

Fall 2009

December 2009

CSU Enrollments

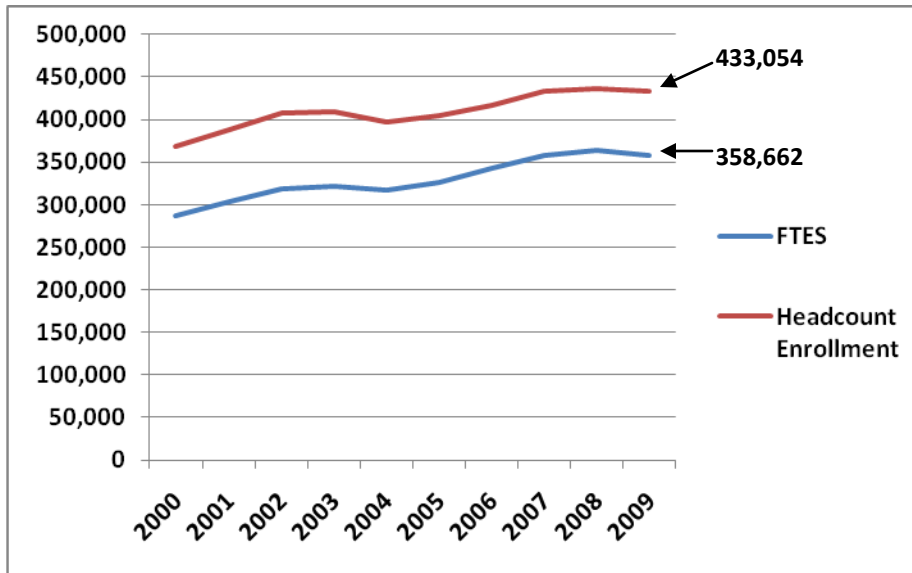


Chart A. Fall Term Enrollment and Full-Time Equivalent Students (FTES) from Fall 2000 to Fall 2009
FTES represent the number of students that would be served if they all attempted a full-time course load.

Year	2000	2001	2002	2003	2004	2005	2006	2007	2008	2009
FTES	287,021	302,904	318,631	321,607	317,234	325,561	343,199	357,746	363,223	358,662
Enrollment	368,469	388,605	407,896	408,946	397,048	405,282	417,112	433,017	437,008	433,054

The state revenues that support higher education enrollments at public universities in California have declined dramatically over the past two years. In particular, the California State University budget has been cut by \$625 million, or 21 percent of its state allocation. To address the substantial loss in funds, the CSU has implemented a response plan that includes employee furloughs, student fee increases, and planned enrollment reductions across the 23 campuses. As a result, CSU enrollment declined in fall 2009: the current enrollment figure of 433,054 students is -3,954 lower than the 437,008 students recorded in fall 2008. Total enrollment is expected to drop by an additional 6,000 by spring 2010. Overall, the CSU expects to reduce enrollment by 40,000 students over the next two years.

Lower fall 2009 enrollments occurred at 12 of the 23 CSU campuses. The largest annual losses were at Long Beach (down 2,334 students), San Diego (down 2,042 students), and San Jose (down 1,466 students). Higher fall enrollments occurred at eleven (11) CSU campuses. The largest annual gains were at Dominguez Hills (up 1,626 students), Pomona (up 1,083 students), and San Marcos (up 619 students).

Another way to gauge enrollments is to convert student headcounts into full-time equivalent students (FTES). In the past this was accomplished by dividing total student credit units attempted by 15,

the normative workload for students pursuing a degree in 4 years. In spring 2006 the state approved a new formula for determining the FTE of graduate students (i.e., students seeking a master's or doctorate degree). Now 12 units attempted by graduate students equal one FTE. However, for students seeking a baccalaureate or credential, the formula remained the same: 15 units attempted equal one FTE.

The current number of FTES is 358,662. Last year's figure was 363,223. The decrease in FTES from the prior year is -4,561 or a -1.3% percent decrease.

The two graph lines in the chart displayed above illustrate the relationship between enrollment numbers and FTES, and they chart the enrollment trend from fall 2000 to fall 2009. Tables 1 and 2, shown on the following pages, list the exact systemwide numbers used to plot the lines and they list campus-specific numbers.

Fullerton recorded the highest campus enrollment (36,262) for the system. San Diego was the leader in FTES enrollment (29,113).

Table 1. Selected Fall Term Enrollment in the California State University, from Fall 2000 ⁽¹⁾

Campus	2000	2001	2002	2003	2004	2005	2006	2007	2008	2009
Fullerton	28,381	30,357	32,143	32,592	32,744	35,040	35,921	37,130	36,996	36,262
Long Beach	30,918	33,259	34,566	34,715	33,479	34,547	35,574	36,868	37,891	35,557
Northridge	29,066	31,448	32,070	33,426	31,341	33,243	34,560	35,446	36,208	35,198
San Diego	31,609	34,171	34,304	33,676	32,936	32,693	34,305	36,559	35,832	33,790
San Jose	26,698	28,007	30,350	28,932	29,044	29,975	29,604	31,906	32,746	31,280
San Francisco	26,826	26,866	28,378	29,686	28,804	28,950	29,628	30,125	30,014	30,469
Sacramento	25,714	26,923	28,558	28,375	27,972	27,932	28,529	28,829	29,011	29,241
Pomona	18,424	19,041	19,821	19,804	19,003	19,885	20,510	21,477	21,190	22,273
Fresno	19,056	20,007	21,272	22,342	19,781	20,371	22,098	22,383	22,613	21,500
Los Angeles	19,593	20,675	21,099	20,637	20,307	20,034	20,565	21,051	20,743	20,619
San Luis Obispo	16,877	18,079	18,453	18,303	17,582	18,475	18,722	19,777	19,471	19,325
San Bernardino	14,909	15,985	16,341	16,927	16,194	16,431	16,479	17,066	17,646	17,852
Chico	15,912	16,704	16,246	15,516	15,734	15,919	16,250	17,034	17,132	16,934
East Bay	12,705	13,240	13,876	13,455	13,061	12,535	12,706	13,124	14,167	14,749
Dominguez Hills	12,848	12,871	13,504	13,248	12,613	12,357	12,068	12,082	12,851	14,477
San Marcos	6,256	6,496	7,678	7,777	7,365	7,502	8,734	9,159	9,148	9,767
Stanislaus	7,062	7,534	7,850	8,072	7,858	8,137	8,374	8,836	8,601	8,586
Sonoma	7,402	7,590	8,219	8,371	7,977	7,749	8,274	8,770	8,921	8,546
Bakersfield	6,397	7,050	7,765	7,933	7,755	7,549	7,711	7,700	7,684	8,003
Humboldt	7,433	7,382	7,611	7,725	7,550	7,462	7,435	7,773	7,800	7,954
Monterey Bay	2,624	3,020	3,551	3,760	3,945	3,773	3,818	4,080	4,340	4,688
Channel Islands ⁽²⁾	-	-	2,139	1,560	2,021	2,575	3,123	3,599	3,783	3,862
Maritime Academy	653	606	721	698	759	860	828	858	875	823
Campus Total	367,363	387,311	406,515	407,530	395,825	403,994	415,816	431,632	435,663	431,755
CalState TEACH	588	733	808	798	640	712	713	774	738	714
International Programs	518	561	573	618	583	576	583	611	607	585
Summer Arts	-	-	-	-	-	-	-	-	-	-
Grand Total	368,469	388,605	407,896	408,946	397,048	405,282	417,112	433,017	437,008	433,054

Notes:

1) Beginning fall 2000, fall enrollment represents profile data and may differ from final data posted in other reports.

2) Channel Islands serve 1,560 native students and 780 continuing students that originally matriculated at Northridge.

Table 2. Selected Fall Term Full-Time Equivalents in the California State University, from Fall 2000 ⁽¹⁾

Campus	2000	2001	2002	2003	2004	2005	2006	2007	2008	2009
San Diego	24,701	27,022	27,622	27,004	26,769	26,948	28,920	31,178	30,821	29,113
Long Beach	23,725	25,592	26,480	26,606	26,009	27,060	28,577	29,797	30,895	28,880
Fullerton	20,701	22,016	23,351	23,428	24,142	25,975	27,025	28,132	28,362	27,965
Northridge	21,440	23,170	24,023	24,853	23,237	25,139	26,651	27,418	28,461	27,442
San Francisco	19,993	19,962	21,244	22,483	22,187	22,537	23,950	24,603	24,692	24,611
Sacramento	19,971	20,985	22,189	22,294	22,091	22,241	23,153	23,265	23,613	24,280
San Jose	19,622	20,525	22,186	21,167	21,554	22,317	23,304	25,276	26,291	23,886
San Luis Obispo	15,606	16,745	17,275	17,196	16,643	17,286	17,620	18,566	18,498	18,699
Pomona	14,903	15,668	16,309	16,603	15,964	16,717	17,527	18,177	17,805	18,687
Fresno	15,838	16,461	17,255	18,166	17,133	17,669	18,845	19,150	19,339	18,679
Los Angeles	13,809	14,711	15,166	15,223	15,457	15,294	16,251	16,687	16,297	15,967
Chico	14,216	14,840	14,409	13,883	14,215	14,550	15,025	15,822	15,963	15,797
San Bernardino	11,556	12,374	12,687	13,224	13,100	13,208	13,776	14,173	14,866	15,014
East Bay	9,971	10,388	10,952	10,778	10,660	10,251	10,979	11,412	12,510	12,977
Dominguez Hills	8,146	8,093	8,709	8,749	8,523	8,266	8,640	8,764	8,846	10,221
Sonoma	6,353	6,580	7,102	7,333	6,958	6,866	7,466	7,985	8,258	7,640
San Marcos	4,710	4,841	5,826	5,979	5,837	5,969	7,089	7,479	7,449	7,594
Humboldt	6,902	6,842	7,007	7,092	7,030	6,905	6,876	7,189	7,223	7,490
Bakersfield	5,449	5,956	6,601	6,707	6,615	6,623	6,937	6,906	6,982	7,301
Stanislaus	5,184	5,442	5,678	5,870	5,778	6,020	6,314	6,686	6,634	6,608
Monterey Bay	2,533	2,888	3,376	3,646	3,851	3,618	3,612	3,923	4,129	4,534
Channel Islands ⁽²⁾	-	-	1,258	1,296	1,656	2,137	2,640	3,038	3,271	3,314
Maritime Academy	713	684	742	771	756	834	886	922	884	901
Campus Total ⁽⁴⁾	286,042	301,785	317,447	320,349	316,165	324,432	342,061	356,547	362,089	357,601
International Programs	570	617	620	680	641	634	647	672	631	587
CalState TEACH	412	501	565	578	427	495	491	527	503	474
Summer Arts	-	-	-	-	-	-	-	-	-	-
Grand Total ⁽³⁾	287,021	302,904	318,631	321,607	317,234	325,561	343,199	357,746	363,223	358,662

Notes:

1) Beginning fall 2000, fall enrollment represents profile data and may differ from final data posted in other reports.

2) Channel Islands serve 1,560 native students and 780 continuing students that originally matriculated at Northridge.

3) Due to rounding, the figures presented on this page may not sum to totals.