

# In Brief

## CSU Enrollments Are Still On the Rise

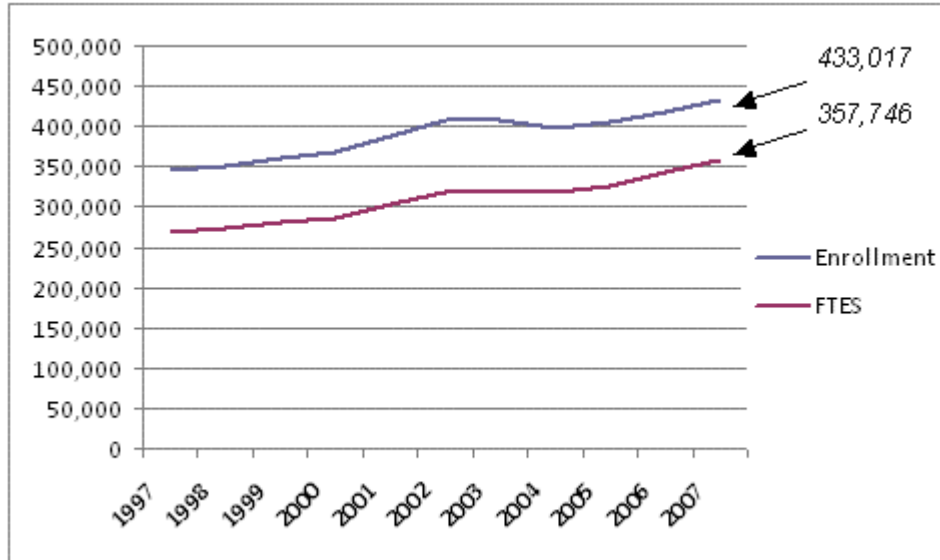


Chart A. Fall Term Enrollment and Full-Time Equivalent Students (FTES) from Fall 1997 to Fall 2007  
FTES represent the number of students that would be served if they all attempted a full-time course load.

The California State University enrollment in fall 2007 surpassed last year's student headcount. The current enrollment figure of 433,017 students is 15,905 higher than the 417,112 students recorded in fall 2006. This represents an annual increase of 3.8 percent.

Higher fall enrollments occurred at all but one CSU campuses. The largest annual gains were at San Jose (up 2,302 students), San Diego (up 2,254 students), Long Beach (up 1,294 students), Fullerton (up 1,209 students), and San Luis Obispo (up 1,055 students). Other campuses with large annual gains were Pomona (up 967 students) and Northridge (up 886 students). The System's newest campus, Channel Islands, grew by 476 students.

Another way to gauge enrollments is to convert student headcounts into full-time equivalent students (FTES). In the past this was accomplished by dividing total student credit units attempted by 15, the normative workload for students pursuing a degree in 4 years. In spring 2006 the state approved a new formula for determining the FTE of graduate students (i.e., students seeking a master's or doctorate degree). Now 12 units attempted by graduate students equal one FTE.

However, for students seeking a baccalaureate or credential, the formula remained the same: 15 units attempted equal one FTE.

The current number of FTES is 357,746. Last year's figure was 343,199; so the annual gain in FTES from the prior year is 14,547 or a 4.2 percent increase. Half of that gain is due to real growth and half is due to the new calculation for FTE.

The two graph lines in the chart displayed above illustrate the relationship between enrollment numbers and FTES, and they chart the enrollment trend from fall 1997 to fall 2007. Tables 1 and 2, shown on the following pages, list the exact systemwide numbers used to plot the lines and they list campus-specific numbers.

For the third year in a row, Fullerton recorded the highest campus enrollment for the system (37,130). However, San Diego leads in FTES (31,178). Long Beach and Northridge also continue to be two of the System's larger campuses, with headcount enrollment numbers quite similar to Fullerton.

Table 1. Selected Fall Term Enrollment in the California State University, from Fall 1997<sup>(1)</sup>

Campus	1997	1998	1999	2000	2001	2002	2003	2004	2005	2006	2007
Fullerton	24,906	25,675	27,167	28,381	30,357	32,143	32,592	32,744	35,040	35,921	37,130
Long Beach	27,809	28,637	30,011	30,918	33,259	34,566	34,715	33,479	34,547	35,574	36,868
San Diego	30,593	31,453	31,413	31,609	34,171	34,304	33,676	32,936	32,693	34,305	36,559
Northridge	27,653	27,203	27,947	29,066	31,448	32,070	33,426	31,341	33,243	34,560	35,446
San Jose	26,897	26,628	26,937	26,698	28,007	30,350	28,932	29,044	29,975	29,604	31,906
San Francisco	26,982	27,446	27,701	26,826	26,866	28,378	29,686	28,804	28,950	29,628	30,125
Sacramento	23,478	23,676	24,530	25,714	26,923	28,558	28,375	27,972	27,932	28,529	28,829
Fresno	18,113	18,101	18,321	19,056	20,007	21,272	22,342	19,781	20,371	22,098	22,383
Pomona	17,246	17,577	18,021	18,424	19,041	19,821	19,804	19,003	19,885	20,510	21,477
Los Angeles	19,160	19,732	19,783	19,593	20,675	21,099	20,637	20,307	20,034	20,565	21,051
San Luis Obispo	16,735	16,296	16,470	16,877	18,079	18,453	18,303	17,582	18,475	18,722	19,777
San Bernardino	13,280	13,600	14,280	14,909	15,985	16,341	16,927	16,194	16,431	16,479	17,066
Chico	14,247	14,983	15,261	15,912	16,704	16,246	15,516	15,734	15,919	16,250	17,034
East Bay	12,855	12,888	12,667	12,705	13,240	13,876	13,455	13,061	12,535	12,706	13,124
Dominguez Hills	10,704	12,054	12,524	12,848	12,871	13,504	13,248	12,613	12,357	12,068	12,082
San Marcos	4,678	5,025	5,739	6,256	6,496	7,678	7,777	7,365	7,502	8,734	9,159
Stanislaus	6,213	6,351	6,489	7,062	7,534	7,850	8,072	7,858	8,137	8,374	8,836
Sonoma	7,047	7,003	7,083	7,402	7,590	8,219	8,371	7,977	7,749	8,274	8,770
Humboldt	7,492	7,475	7,545	7,433	7,382	7,611	7,725	7,550	7,462	7,435	7,773
Bakersfield	5,717	5,594	6,210	6,397	7,050	7,765	7,933	7,755	7,549	7,711	7,700
Monterey Bay	1,586	1,958	2,265	2,624	3,020	3,551	3,760	3,945	3,773	3,818	4,080
Channel Islands <sup>(2)</sup>	-	-	-	-	-	2,139	1,560	2021	2,575	3,123	3,599
Maritime Academy	388	449	583	653	606	721	698	759	860	828	858
Campus Total	343,779	349,804	358,947	367,363	387,311	406,515	407,530	395,825	403,994	415,816	431,632
Statewide Nursing <sup>(3)</sup>	1,712	-	-	-	-	-	-	0			
International Programs	-	449	463	518	561	573	618	583	576	583	611
CalState TEACH	-	-	309	588	733	808	798	640	712	713	774
Grand Total	345,491	350,253	359,719	368,469	388,605	407,896	408,946	397,048	405,282	417,112	433,017

Notes:

- 1) Beginning fall 2000, fall enrollment represents profile data and may differ from final data posted in other reports.
- 2) Channel Islands serve 1,560 native students and 780 continuing students that originally matriculated at Northridge.
- 3) Beginning fall 1998, Statewide Nursing enrollment is included in Dominguez Hills.

Table 2. Selected Fall Term Full-Time Equivalents in the California State University, from Fall 1997<sup>(1)</sup>

Campus	1997	1998	1999	2000	2001	2002	2003	2004	2005	2006	2007
San Diego	23,830	24,617	24,670	24,701	27,022	27,622	27,004	26,769	26,948	28,920	31,178
Long Beach	20,745	21,456	22,836	23,725	25,592	26,480	26,606	26,009	27,060	28,577	29,797
Fullerton	18,051	18,545	19,885	20,701	22,016	23,351	23,428	24,142	25,975	27,025	28,132
Northridge	20,022	19,841	20,475	21,440	23,170	24,023	24,853	23,237	25,139	26,651	27,418
San Jose	19,984	19,532	19,696	19,622	20,525	22,186	21,167	21,554	22,317	23,304	25,276
San Francisco	19,935	20,360	20,576	19,993	19,962	21,244	22,483	22,187	22,537	23,950	24,603
Sacramento	18,254	18,536	19,159	19,971	20,985	22,189	22,294	22,091	22,241	23,153	23,265
Fresno	15,178	15,289	15,577	15,838	16,461	17,255	18,166	17,133	17,669	18,845	19,150
San Luis Obispo	15,463	15,121	15,301	15,606	16,745	17,275	17,196	16,643	17,286	17,620	18,566
Pomona	13,881	14,378	14,619	14,903	15,668	16,309	16,603	15,964	16,717	17,527	18,177
Los Angeles	13,331	13,881	14,002	13,809	14,711	15,166	15,223	15,457	15,294	16,251	16,687
Chico	12,810	13,472	13,692	14,216	14,840	14,409	13,883	14,215	14,550	15,025	15,822
San Bernardino	10,293	10,680	11,124	11,556	12,374	12,687	13,224	13,100	13,208	13,776	14,173
East Bay	10,036	10,039	10,049	9,971	10,388	10,952	10,778	10,660	10,251	10,979	11,412
Dominguez Hills	7,180	7,790	7,923	8,146	8,093	8,709	8,749	8,523	8,266	8,640	8,764
Sonoma	5,979	5,961	6,059	6,353	6,580	7,102	7,333	6,958	6,866	7,466	7,985
San Marcos	3,481	3,703	4,313	4,710	4,841	5,826	5,979	5,837	5,969	7,089	7,479
Humboldt	7,072	7,118	7,060	6,902	6,842	7,007	7,092	7,030	6,905	6,876	7,189
Bakersfield	4,844	4,720	5,296	5,449	5,956	6,601	6,707	6,615	6,623	6,937	6,906
Stanislaus	4,503	4,687	4,855	5,184	5,442	5,678	5,870	5,778	6,020	6,314	6,686
Monterey Bay	1,544	1,830	2,142	2,533	2,888	3,376	3,646	3,851	3,618	3,612	3,923
Channel Islands <sup>(2)</sup>	-	-	-	-	-	1,258	1,296	1,656	2,137	2,640	3,038
Maritime Academy	464	553	661	713	684	742	771	756	834	886	922
<b>Campus Total <sup>(4)</sup></b>	<b>266,880</b>	<b>272,109</b>	<b>279,970</b>	<b>286,042</b>	<b>301,785</b>	<b>317,447</b>	<b>320,349</b>	<b>316,165</b>	<b>324,432</b>	<b>342,061</b>	<b>356,547</b>
Statewide Nursing <sup>(3)</sup>	735	-	-	-	-	-	-	-	-	-	-
International Programs	-	495	463	570	617	620	680	641	634	647	672
CalState TEACH	-	-	185	412	501	565	578	427	495	491	527
<b>Grand Total <sup>(4)</sup></b>	<b>267,612</b>	<b>272,605</b>	<b>280,619</b>	<b>287,021</b>	<b>302,904</b>	<b>318,631</b>	<b>321,607</b>	<b>317,234</b>	<b>325,561</b>	<b>343,199</b>	<b>357,746</b>

Notes:

- 1) Beginning fall 2000, fall enrollment represents profile data and may differ from final data posted in other reports.
- 2) Channel Islands serve 1,560 native students and 780 continuing students that originally matriculated at Northridge.
- 3) Beginning fall 1998, Statewide Nursing enrollment is included in Dominguez Hills.
- 4) Due to rounding, the figures presented on this page may not sum to totals.